



Project: Weld County, CO
Site: Sec 30-T10N-R57W
Well: Horsetail #30E-3138
Wellbore: Hz
Design: APD

PROJECT DETAILS: Weld County, CO
Geodetic System: US State Plane 1983
Datum: North American Datum 1983
Ellipsoid: GRS 1980
Zone: Colorado Northern Zone
System Datum: Mean Sea Level



Azimuths to True North
Magnetic North: 7.81°
Magnetic Field
Strength: 53006.3snT
Dip Angle: 67.38°
Date: 7/28/2015
Model: IGRF2010

WELL DETAILS: Horsetail #30E-3138

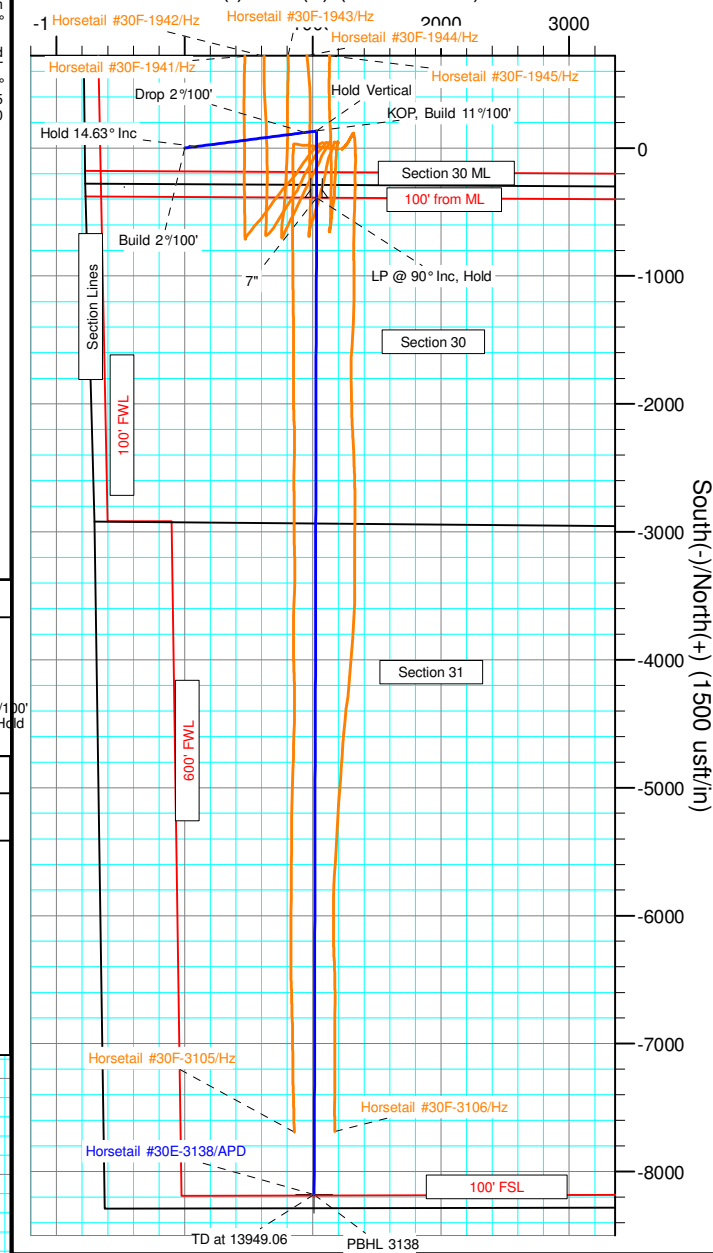
+N/-S	+E/-W	Northing	Ground Level:	4806.40	Longitude	Slot
0.00	0.00	1542644.28	Easting	3470409.78	40° 48' 38.040 N	103° 48' 2.100 W

SECTION DETAILS

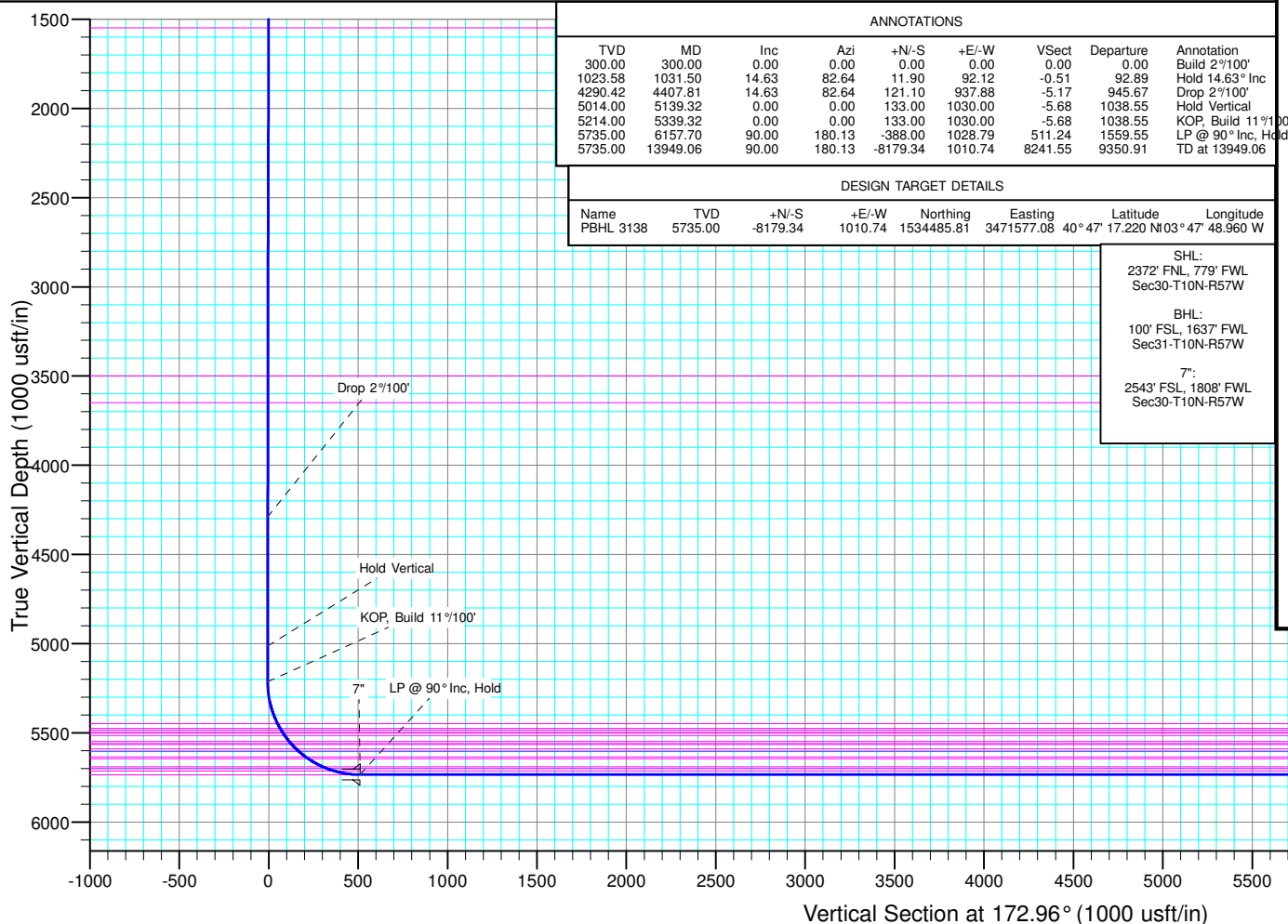
Sec	MD	Inc	Azi	TVD	+N/-S	+E/-W	Dleg	TFace	VSec	Target
1	0.00	0.00	0.00	0.00	0.00	0.00	0.00	0.00	0.00	
2	300.00	0.00	0.00	300.00	0.00	0.00	0.00	0.00	0.00	
3	1031.50	14.63	82.64	1023.58	11.90	92.12	2.00	82.64	-0.51	
4	4407.81	14.63	82.64	4290.42	121.10	937.88	0.00	0.00	-5.17	
5	5139.32	0.00	0.00	5014.00	133.00	1030.00	2.00	180.00	-5.68	
6	5339.32	0.00	0.00	5214.00	133.00	1030.00	0.00	0.00	-5.68	
7	6157.70	90.00	180.13	5735.00	-388.00	1028.79	11.00	180.13	511.24	
8	13949.06	90.00	180.13	5735.00	-8179.34	1010.74	0.00	0.00	8241.55	PBHL 3138

TVDPath	MDPath	Formation
1550.00	1575.56	Upper Pierre
3500.00	3590.91	Hygiene
3650.00	3745.93	Lower Pierre
5448.00	5582.00	P200 Marker
5475.00	5612.69	P300 Marker
5486.00	5625.49	P350 Marker
5498.00	5639.68	Sharon Springs
5500.00	5642.07	Niobrara
5516.00	5661.45	Top A Chalk
5548.00	5701.88	Top A Marl
5560.00	5717.72	A Marl
5566.00	5725.80	Top Upper B
5590.00	5759.37	Base Upper B
5606.00	5783.05	Top Lower B
5636.00	5831.20	Base Lower B
5646.00	5848.66	Top B Marl
5690.00	5939.57	Top C Chalk
5700.00	5965.65	Middle C Chalk
5714.00	6009.28	Middle C Marl
5735.00	6157.70	Lower C Chalk

West(-)/East(+) (1500 usft/in)



South(-)/North(+) (1500 usft/in)



ANNOTATIONS

TVD	MD	Inc	Azi	+N/-S	+E/-W	VSec	Departure	Annotation
300.00	300.00	0.00	0.00	0.00	0.00	0.00	0.00	Build 2°/100'
1023.58	1031.50	14.63	82.64	11.90	92.12	-0.51	92.89	Hold 14.63° Inc
4290.42	4407.81	14.63	82.64	121.10	937.88	-5.17	945.67	Drop 2°/100'
5014.00	5139.32	0.00	0.00	133.00	1030.00	-5.68	1038.55	Hold Vertical
5214.00	5339.32	0.00	0.00	133.00	1030.00	-5.68	1038.55	KOP, Build 11°/100'
5735.00	6157.70	90.00	180.13	-388.00	1028.79	511.24	1559.55	LP @ 90° Inc, Hold
5735.00	13949.06	90.00	180.13	-8179.34	1010.74	8241.55	9350.91	TD at 13949.06

DESIGN TARGET DETAILS

Name	TVD	+N/-S	+E/-W	Northing	Easting	Latitude	Longitude
PBHL 3138	5735.00	-8179.34	1010.74	1534485.81	3471577.08	40° 47' 17.220 N	103° 47' 48.960 W

SHL:
2372' FNL, 779' FWL
Sec30-T10N-R57W

BHL:
100' FSL, 1637' FWL
Sec31-T10N-R57W

7°:
2543' FSL, 1808' FWL
Sec30-T10N-R57W



Whiting Petroleum Corp.

**Weld County, CO
Sec 30-T10N-R57W
Horsetail #30E-3138**

Hz

Plan: APD

Standard Planning Report

22 October, 2015



WOG

Planning Report

Database:	LandmarkEDM	Local Co-ordinate Reference:	Well Horsetail #30E-3138
Company:	Whiting Petroleum Corp.	TVD Reference:	KBE @ 4827.40usft (Original Well Elev)
Project:	Weld County, CO	MD Reference:	KBE @ 4827.40usft (Original Well Elev)
Site:	Sec 30-T10N-R57W	North Reference:	True
Well:	Horsetail #30E-3138	Survey Calculation Method:	Minimum Curvature
Wellbore:	Hz		
Design:	APD		

Project	Weld County, CO		
Map System:	US State Plane 1983	System Datum:	Mean Sea Level
Geo Datum:	North American Datum 1983		
Map Zone:	Colorado Northern Zone		

Site	Sec 30-T10N-R57W			
Site Position:		Northing:	1,545,003.67 usft	Latitude: 40° 49' 1.510 N
From:	Lat/Long	Easting:	3,469,557.91 usft	Longitude: 103° 48' 12.589 W
Position Uncertainty:	0.00 usft	Slot Radius:	13.200 in	Grid Convergence: 1.10 °

Well	Horsetail #30E-3138			
Well Position	+N/-S	-2,375.26 usft	Northing:	1,542,644.28 usft
	+E/-W	806.57 usft	Easting:	3,470,409.78 usft
Position Uncertainty	0.00 usft	Wellhead Elevation:	0.00 usft	Ground Level: 4,806.40 usft

Wellbore	Hz				
Magnetics	Model Name	Sample Date	Declination (°)	Dip Angle (°)	Field Strength (nT)
	IGRF2010	7/28/2015	7.81	67.38	53,006

Design	APD			
Audit Notes:				
Version:	Phase:	PROTOTYPE	Tie On Depth:	0.00
Vertical Section:	Depth From (TVD) (usft)	+N/-S (usft)	+E/-W (usft)	Direction (°)
	0.00	0.00	0.00	172.96

Plan Sections										
Measured Depth (usft)	Inclination (°)	Azimuth (°)	Vertical Depth (usft)	+N/-S (usft)	+E/-W (usft)	Dogleg Rate (°/100ft)	Build Rate (°/100ft)	Turn Rate (°/100ft)	TFO (°)	Target
0.00	0.00	0.00	0.00	0.00	0.00	0.00	0.00	0.00	0.00	
300.00	0.00	0.00	300.00	0.00	0.00	0.00	0.00	0.00	0.00	
1,031.50	14.63	82.64	1,023.58	11.90	92.12	2.00	2.00	0.00	82.64	
4,407.82	14.63	82.64	4,290.42	121.10	937.88	0.00	0.00	0.00	0.00	
5,139.32	0.00	0.00	5,014.00	133.00	1,030.00	2.00	-2.00	0.00	180.00	
5,339.32	0.00	0.00	5,214.00	133.00	1,030.00	0.00	0.00	0.00	0.00	
6,157.70	90.00	180.13	5,735.00	-388.00	1,028.79	11.00	11.00	0.00	180.13	
13,949.06	90.00	180.13	5,735.00	-8,179.34	1,010.74	0.00	0.00	0.00	0.00	PBHL 3138



WOG

Planning Report

Database:	LandmarkEDM	Local Co-ordinate Reference:	Well Horsetail #30E-3138
Company:	Whiting Petroleum Corp.	TVD Reference:	KBE @ 4827.40usft (Original Well Elev)
Project:	Weld County, CO	MD Reference:	KBE @ 4827.40usft (Original Well Elev)
Site:	Sec 30-T10N-R57W	North Reference:	True
Well:	Horsetail #30E-3138	Survey Calculation Method:	Minimum Curvature
Wellbore:	Hz		
Design:	APD		

Planned Survey									
Measured Depth (usft)	Inclination (°)	Azimuth (°)	Vertical Depth (usft)	+N/-S (usft)	+E/-W (usft)	Vertical Section (usft)	Dogleg Rate (°/100ft)	Build Rate (°/100ft)	Turn Rate (°/100ft)
0.00	0.00	0.00	0.00	0.00	0.00	0.00	0.00	0.00	0.00
100.00	0.00	0.00	100.00	0.00	0.00	0.00	0.00	0.00	0.00
200.00	0.00	0.00	200.00	0.00	0.00	0.00	0.00	0.00	0.00
300.00	0.00	0.00	300.00	0.00	0.00	0.00	0.00	0.00	0.00
Build 2°/100'									
400.00	2.00	82.64	399.98	0.22	1.73	-0.01	2.00	2.00	0.00
500.00	4.00	82.64	499.84	0.89	6.92	-0.04	2.00	2.00	0.00
600.00	6.00	82.64	599.45	2.01	15.56	-0.09	2.00	2.00	0.00
700.00	8.00	82.64	698.70	3.57	27.65	-0.15	2.00	2.00	0.00
800.00	10.00	82.64	797.47	5.57	43.16	-0.24	2.00	2.00	0.00
900.00	12.00	82.64	895.62	8.02	62.09	-0.34	2.00	2.00	0.00
1,000.00	14.00	82.64	993.06	10.90	84.40	-0.47	2.00	2.00	0.00
1,031.50	14.63	82.64	1,023.58	11.90	92.12	-0.51	2.00	2.00	0.00
Hold 14.63° Inc									
1,100.00	14.63	82.64	1,089.86	14.11	109.28	-0.60	0.00	0.00	0.00
1,200.00	14.63	82.64	1,186.61	17.35	134.33	-0.74	0.00	0.00	0.00
1,300.00	14.63	82.64	1,283.37	20.58	159.38	-0.88	0.00	0.00	0.00
1,400.00	14.63	82.64	1,380.13	23.81	184.43	-1.02	0.00	0.00	0.00
1,500.00	14.63	82.64	1,476.89	27.05	209.48	-1.15	0.00	0.00	0.00
1,575.56	14.63	82.64	1,550.00	29.49	228.41	-1.26	0.00	0.00	0.00
Upper Pierre									
1,600.00	14.63	82.64	1,573.64	30.28	234.53	-1.29	0.00	0.00	0.00
1,700.00	14.63	82.64	1,670.40	33.52	259.58	-1.43	0.00	0.00	0.00
1,800.00	14.63	82.64	1,767.16	36.75	284.63	-1.57	0.00	0.00	0.00
1,900.00	14.63	82.64	1,863.92	39.99	309.68	-1.71	0.00	0.00	0.00
2,000.00	14.63	82.64	1,960.68	43.22	334.73	-1.84	0.00	0.00	0.00
2,100.00	14.63	82.64	2,057.43	46.46	359.78	-1.98	0.00	0.00	0.00
2,200.00	14.63	82.64	2,154.19	49.69	384.83	-2.12	0.00	0.00	0.00
2,300.00	14.63	82.64	2,250.95	52.93	409.88	-2.26	0.00	0.00	0.00
2,400.00	14.63	82.64	2,347.71	56.16	434.93	-2.40	0.00	0.00	0.00
2,500.00	14.63	82.64	2,444.46	59.39	459.98	-2.54	0.00	0.00	0.00
2,600.00	14.63	82.64	2,541.22	62.63	485.03	-2.67	0.00	0.00	0.00
2,700.00	14.63	82.64	2,637.98	65.86	510.08	-2.81	0.00	0.00	0.00
2,800.00	14.63	82.64	2,734.74	69.10	535.13	-2.95	0.00	0.00	0.00
2,900.00	14.63	82.64	2,831.49	72.33	560.18	-3.09	0.00	0.00	0.00
3,000.00	14.63	82.64	2,928.25	75.57	585.22	-3.23	0.00	0.00	0.00
3,100.00	14.63	82.64	3,025.01	78.80	610.27	-3.36	0.00	0.00	0.00
3,200.00	14.63	82.64	3,121.77	82.04	635.32	-3.50	0.00	0.00	0.00
3,300.00	14.63	82.64	3,218.52	85.27	660.37	-3.64	0.00	0.00	0.00
3,400.00	14.63	82.64	3,315.28	88.51	685.42	-3.78	0.00	0.00	0.00
3,500.00	14.63	82.64	3,412.04	91.74	710.47	-3.92	0.00	0.00	0.00
3,590.91	14.63	82.64	3,500.00	94.68	733.25	-4.04	0.00	0.00	0.00
Hygiene									
3,600.00	14.63	82.64	3,508.80	94.98	735.52	-4.05	0.00	0.00	0.00
3,700.00	14.63	82.64	3,605.56	98.21	760.57	-4.19	0.00	0.00	0.00
3,745.93	14.63	82.64	3,650.00	99.70	772.08	-4.26	0.00	0.00	0.00
Lower Pierre									
3,800.00	14.63	82.64	3,702.31	101.44	785.62	-4.33	0.00	0.00	0.00
3,900.00	14.63	82.64	3,799.07	104.68	810.67	-4.47	0.00	0.00	0.00
4,000.00	14.63	82.64	3,895.83	107.91	835.72	-4.61	0.00	0.00	0.00
4,100.00	14.63	82.64	3,992.59	111.15	860.77	-4.74	0.00	0.00	0.00
4,200.00	14.63	82.64	4,089.34	114.38	885.82	-4.88	0.00	0.00	0.00
4,300.00	14.63	82.64	4,186.10	117.62	910.87	-5.02	0.00	0.00	0.00
4,407.82	14.63	82.64	4,290.42	121.10	937.88	-5.17	0.00	0.00	0.00



WOG Planning Report

Database:	LandmarkEDM	Local Co-ordinate Reference:	Well Horsetail #30E-3138
Company:	Whiting Petroleum Corp.	TVD Reference:	KBE @ 4827.40usft (Original Well Elev)
Project:	Weld County, CO	MD Reference:	KBE @ 4827.40usft (Original Well Elev)
Site:	Sec 30-T10N-R57W	North Reference:	True
Well:	Horsetail #30E-3138	Survey Calculation Method:	Minimum Curvature
Wellbore:	Hz		
Design:	APD		

Planned Survey									
Measured Depth (usft)	Inclination (°)	Azimuth (°)	Vertical Depth (usft)	+N/-S (usft)	+E/-W (usft)	Vertical Section (usft)	Dogleg Rate (°/100ft)	Build Rate (°/100ft)	Turn Rate (°/100ft)
Drop 2°/100'									
4,500.00	12.79	82.64	4,379.98	123.90	959.54	-5.29	2.00	-2.00	0.00
4,600.00	10.79	82.64	4,477.86	126.52	979.80	-5.40	2.00	-2.00	0.00
4,700.00	8.79	82.64	4,576.40	128.69	996.66	-5.49	2.00	-2.00	0.00
4,800.00	6.79	82.64	4,675.48	130.43	1,010.09	-5.57	2.00	-2.00	0.00
4,900.00	4.79	82.64	4,774.96	131.72	1,020.09	-5.62	2.00	-2.00	0.00
5,000.00	2.79	82.64	4,874.74	132.57	1,026.64	-5.66	2.00	-2.00	0.00
5,100.00	0.79	82.64	4,974.68	132.97	1,029.73	-5.68	2.00	-2.00	0.00
5,139.32	0.00	0.00	5,014.00	133.00	1,030.00	-5.68	2.00	-2.00	0.00
Hold Vertical									
5,200.00	0.00	0.00	5,074.68	133.00	1,030.00	-5.68	0.00	0.00	0.00
5,300.00	0.00	0.00	5,174.68	133.00	1,030.00	-5.68	0.00	0.00	0.00
5,339.32	0.00	0.00	5,214.00	133.00	1,030.00	-5.68	0.00	0.00	0.00
KOP, Build 11°/100'									
5,350.00	1.17	180.13	5,224.68	132.89	1,030.00	-5.57	11.00	11.00	0.00
5,400.00	6.67	180.13	5,274.55	129.47	1,029.99	-2.17	11.00	11.00	0.00
5,450.00	12.17	180.13	5,323.85	121.29	1,029.97	5.94	11.00	11.00	0.00
5,500.00	17.67	180.13	5,372.15	108.42	1,029.94	18.71	11.00	11.00	0.00
5,550.00	23.17	180.13	5,418.99	90.98	1,029.90	36.01	11.00	11.00	0.00
5,582.00	26.69	180.13	5,448.00	77.49	1,029.87	49.39	11.00	11.00	0.00
P200 Marker									
5,600.00	28.67	180.13	5,463.94	69.13	1,029.85	57.69	11.00	11.00	0.00
5,612.69	30.06	180.13	5,475.00	62.91	1,029.84	63.86	11.00	11.00	0.00
P300 Marker									
5,625.49	31.47	180.13	5,486.00	56.36	1,029.82	70.36	11.00	11.00	0.00
P350 Marker									
5,639.68	33.03	180.13	5,498.00	48.79	1,029.80	77.87	11.00	11.00	0.00
Sharon Springs									
5,642.07	33.29	180.13	5,500.00	47.48	1,029.80	79.17	11.00	11.00	0.00
Niobrara									
5,650.00	34.17	180.13	5,506.59	43.08	1,029.79	83.54	11.00	11.00	0.00
5,661.45	35.43	180.13	5,516.00	36.54	1,029.78	90.02	11.00	11.00	0.00
Top A Chalk									
5,700.00	39.67	180.13	5,546.55	13.06	1,029.72	113.32	11.00	11.00	0.00
5,701.88	39.87	180.13	5,548.00	11.86	1,029.72	114.52	11.00	11.00	0.00
Top A Marl									
5,717.72	41.61	180.13	5,560.00	1.52	1,029.70	124.77	11.00	11.00	0.00
A Marl									
5,725.80	42.50	180.13	5,566.00	-3.89	1,029.68	130.14	11.00	11.00	0.00
Top Upper B									
5,750.00	45.16	180.13	5,583.45	-20.65	1,029.64	146.77	11.00	11.00	0.00
5,759.37	46.19	180.13	5,590.00	-27.35	1,029.63	153.42	11.00	11.00	0.00
Base Upper B									
5,783.05	48.80	180.13	5,606.00	-44.81	1,029.59	170.74	11.00	11.00	0.00
Top Lower B									
5,800.00	50.66	180.13	5,616.95	-57.74	1,029.56	183.57	11.00	11.00	0.00
5,831.20	54.09	180.13	5,636.00	-82.46	1,029.50	208.09	11.00	11.00	0.00
Base Lower B									
5,848.66	56.01	180.13	5,646.00	-96.77	1,029.47	222.29	11.00	11.00	0.00
Top B Marl									
5,850.00	56.16	180.13	5,646.75	-97.88	1,029.47	223.39	11.00	11.00	0.00
5,900.00	61.66	180.13	5,672.56	-140.68	1,029.37	265.86	11.00	11.00	0.00



WOG

Planning Report

Database:	LandmarkEDM	Local Co-ordinate Reference:	Well Horsetail #30E-3138
Company:	Whiting Petroleum Corp.	TVD Reference:	KBE @ 4827.40usft (Original Well Elev)
Project:	Weld County, CO	MD Reference:	KBE @ 4827.40usft (Original Well Elev)
Site:	Sec 30-T10N-R57W	North Reference:	True
Well:	Horsetail #30E-3138	Survey Calculation Method:	Minimum Curvature
Wellbore:	HZ		
Design:	APD		

Planned Survey										
Measured Depth (usft)	Inclination (°)	Azimuth (°)	Vertical Depth (usft)	+N/-S (usft)	+E/-W (usft)	Vertical Section (usft)	Dogleg Rate (°/100ft)	Build Rate (°/100ft)	Turn Rate (°/100ft)	
5,939.57	66.01	180.13	5,690.00	-176.19	1,029.28	301.09	11.00	11.00	0.00	
Top C Chalk										
5,950.00	67.16	180.13	5,694.14	-185.76	1,029.26	310.58	11.00	11.00	0.00	
5,965.65	68.88	180.13	5,700.00	-200.26	1,029.23	324.98	11.00	11.00	0.00	
Middle C Chalk										
6,000.00	72.66	180.13	5,711.31	-232.69	1,029.15	357.15	11.00	11.00	0.00	
6,009.28	73.68	180.13	5,714.00	-241.57	1,029.13	365.96	11.00	11.00	0.00	
Middle C Marl										
6,050.00	78.16	180.13	5,723.91	-281.06	1,029.04	405.14	11.00	11.00	0.00	
6,100.00	83.65	180.13	5,731.81	-330.41	1,028.93	454.11	11.00	11.00	0.00	
6,150.00	89.15	180.13	5,734.94	-380.30	1,028.81	503.60	11.00	11.00	0.00	
6,157.70	90.00	180.13	5,735.00	-388.00	1,028.79	511.24	11.00	11.00	0.00	
LP @ 90° Inc, Hold - Lower C Chalk - 7"										
6,200.00	90.00	180.13	5,735.00	-430.30	1,028.70	553.21	0.00	0.00	0.00	
6,300.00	90.00	180.13	5,735.00	-530.30	1,028.46	652.42	0.00	0.00	0.00	
6,400.00	90.00	180.13	5,735.00	-630.30	1,028.23	751.64	0.00	0.00	0.00	
6,500.00	90.00	180.13	5,735.00	-730.30	1,028.00	850.86	0.00	0.00	0.00	
6,600.00	90.00	180.13	5,735.00	-830.30	1,027.77	950.07	0.00	0.00	0.00	
6,700.00	90.00	180.13	5,735.00	-930.29	1,027.54	1,049.29	0.00	0.00	0.00	
6,800.00	90.00	180.13	5,735.00	-1,030.29	1,027.31	1,148.51	0.00	0.00	0.00	
6,900.00	90.00	180.13	5,735.00	-1,130.29	1,027.07	1,247.72	0.00	0.00	0.00	
7,000.00	90.00	180.13	5,735.00	-1,230.29	1,026.84	1,346.94	0.00	0.00	0.00	
7,100.00	90.00	180.13	5,735.00	-1,330.29	1,026.61	1,446.16	0.00	0.00	0.00	
7,200.00	90.00	180.13	5,735.00	-1,430.29	1,026.38	1,545.37	0.00	0.00	0.00	
7,300.00	90.00	180.13	5,735.00	-1,530.29	1,026.15	1,644.59	0.00	0.00	0.00	
7,400.00	90.00	180.13	5,735.00	-1,630.29	1,025.91	1,743.80	0.00	0.00	0.00	
7,500.00	90.00	180.13	5,735.00	-1,730.29	1,025.68	1,843.02	0.00	0.00	0.00	
7,600.00	90.00	180.13	5,735.00	-1,830.29	1,025.45	1,942.24	0.00	0.00	0.00	
7,700.00	90.00	180.13	5,735.00	-1,930.29	1,025.22	2,041.45	0.00	0.00	0.00	
7,800.00	90.00	180.13	5,735.00	-2,030.29	1,024.99	2,140.67	0.00	0.00	0.00	
7,900.00	90.00	180.13	5,735.00	-2,130.29	1,024.76	2,239.89	0.00	0.00	0.00	
8,000.00	90.00	180.13	5,735.00	-2,230.29	1,024.52	2,339.10	0.00	0.00	0.00	
8,100.00	90.00	180.13	5,735.00	-2,330.29	1,024.29	2,438.32	0.00	0.00	0.00	
8,200.00	90.00	180.13	5,735.00	-2,430.29	1,024.06	2,537.54	0.00	0.00	0.00	
8,300.00	90.00	180.13	5,735.00	-2,530.29	1,023.83	2,636.75	0.00	0.00	0.00	
8,400.00	90.00	180.13	5,735.00	-2,630.29	1,023.60	2,735.97	0.00	0.00	0.00	
8,500.00	90.00	180.13	5,735.00	-2,730.29	1,023.37	2,835.19	0.00	0.00	0.00	
8,600.00	90.00	180.13	5,735.00	-2,830.29	1,023.13	2,934.40	0.00	0.00	0.00	
8,700.00	90.00	180.13	5,735.00	-2,930.29	1,022.90	3,033.62	0.00	0.00	0.00	
8,800.00	90.00	180.13	5,735.00	-3,030.29	1,022.67	3,132.83	0.00	0.00	0.00	
8,900.00	90.00	180.13	5,735.00	-3,130.29	1,022.44	3,232.05	0.00	0.00	0.00	
9,000.00	90.00	180.13	5,735.00	-3,230.29	1,022.21	3,331.27	0.00	0.00	0.00	
9,100.00	90.00	180.13	5,735.00	-3,330.29	1,021.98	3,430.48	0.00	0.00	0.00	
9,200.00	90.00	180.13	5,735.00	-3,430.29	1,021.74	3,529.70	0.00	0.00	0.00	
9,300.00	90.00	180.13	5,735.00	-3,530.29	1,021.51	3,628.92	0.00	0.00	0.00	
9,400.00	90.00	180.13	5,735.00	-3,630.29	1,021.28	3,728.13	0.00	0.00	0.00	
9,500.00	90.00	180.13	5,735.00	-3,730.29	1,021.05	3,827.35	0.00	0.00	0.00	
9,600.00	90.00	180.13	5,735.00	-3,830.29	1,020.82	3,926.57	0.00	0.00	0.00	
9,700.00	90.00	180.13	5,735.00	-3,930.29	1,020.59	4,025.78	0.00	0.00	0.00	
9,800.00	90.00	180.13	5,735.00	-4,030.29	1,020.35	4,125.00	0.00	0.00	0.00	
9,900.00	90.00	180.13	5,735.00	-4,130.29	1,020.12	4,224.22	0.00	0.00	0.00	
10,000.00	90.00	180.13	5,735.00	-4,230.29	1,019.89	4,323.43	0.00	0.00	0.00	
10,100.00	90.00	180.13	5,735.00	-4,330.29	1,019.66	4,422.65	0.00	0.00	0.00	
10,200.00	90.00	180.13	5,735.00	-4,430.29	1,019.43	4,521.86	0.00	0.00	0.00	



WOG

Planning Report

Database:	LandmarkEDM	Local Co-ordinate Reference:	Well Horsetail #30E-3138
Company:	Whiting Petroleum Corp.	TVD Reference:	KBE @ 4827.40usft (Original Well Elev)
Project:	Weld County, CO	MD Reference:	KBE @ 4827.40usft (Original Well Elev)
Site:	Sec 30-T10N-R57W	North Reference:	True
Well:	Horsetail #30E-3138	Survey Calculation Method:	Minimum Curvature
Wellbore:	HZ		
Design:	APD		

Planned Survey									
Measured Depth (usft)	Inclination (°)	Azimuth (°)	Vertical Depth (usft)	+N/-S (usft)	+E/-W (usft)	Vertical Section (usft)	Dogleg Rate (°/100ft)	Build Rate (°/100ft)	Turn Rate (°/100ft)
10,300.00	90.00	180.13	5,735.00	-4,530.29	1,019.20	4,621.08	0.00	0.00	0.00
10,400.00	90.00	180.13	5,735.00	-4,630.29	1,018.96	4,720.30	0.00	0.00	0.00
10,500.00	90.00	180.13	5,735.00	-4,730.28	1,018.73	4,819.51	0.00	0.00	0.00
10,600.00	90.00	180.13	5,735.00	-4,830.28	1,018.50	4,918.73	0.00	0.00	0.00
10,700.00	90.00	180.13	5,735.00	-4,930.28	1,018.27	5,017.95	0.00	0.00	0.00
10,800.00	90.00	180.13	5,735.00	-5,030.28	1,018.04	5,117.16	0.00	0.00	0.00
10,900.00	90.00	180.13	5,735.00	-5,130.28	1,017.81	5,216.38	0.00	0.00	0.00
11,000.00	90.00	180.13	5,735.00	-5,230.28	1,017.57	5,315.60	0.00	0.00	0.00
11,100.00	90.00	180.13	5,735.00	-5,330.28	1,017.34	5,414.81	0.00	0.00	0.00
11,200.00	90.00	180.13	5,735.00	-5,430.28	1,017.11	5,514.03	0.00	0.00	0.00
11,300.00	90.00	180.13	5,735.00	-5,530.28	1,016.88	5,613.25	0.00	0.00	0.00
11,400.00	90.00	180.13	5,735.00	-5,630.28	1,016.65	5,712.46	0.00	0.00	0.00
11,500.00	90.00	180.13	5,735.00	-5,730.28	1,016.42	5,811.68	0.00	0.00	0.00
11,600.00	90.00	180.13	5,735.00	-5,830.28	1,016.18	5,910.90	0.00	0.00	0.00
11,700.00	90.00	180.13	5,735.00	-5,930.28	1,015.95	6,010.11	0.00	0.00	0.00
11,800.00	90.00	180.13	5,735.00	-6,030.28	1,015.72	6,109.33	0.00	0.00	0.00
11,900.00	90.00	180.13	5,735.00	-6,130.28	1,015.49	6,208.54	0.00	0.00	0.00
12,000.00	90.00	180.13	5,735.00	-6,230.28	1,015.26	6,307.76	0.00	0.00	0.00
12,100.00	90.00	180.13	5,735.00	-6,330.28	1,015.03	6,406.98	0.00	0.00	0.00
12,200.00	90.00	180.13	5,735.00	-6,430.28	1,014.79	6,506.19	0.00	0.00	0.00
12,300.00	90.00	180.13	5,735.00	-6,530.28	1,014.56	6,605.41	0.00	0.00	0.00
12,400.00	90.00	180.13	5,735.00	-6,630.28	1,014.33	6,704.63	0.00	0.00	0.00
12,500.00	90.00	180.13	5,735.00	-6,730.28	1,014.10	6,803.84	0.00	0.00	0.00
12,600.00	90.00	180.13	5,735.00	-6,830.28	1,013.87	6,903.06	0.00	0.00	0.00
12,700.00	90.00	180.13	5,735.00	-6,930.28	1,013.64	7,002.28	0.00	0.00	0.00
12,800.00	90.00	180.13	5,735.00	-7,030.28	1,013.40	7,101.49	0.00	0.00	0.00
12,900.00	90.00	180.13	5,735.00	-7,130.28	1,013.17	7,200.71	0.00	0.00	0.00
13,000.00	90.00	180.13	5,735.00	-7,230.28	1,012.94	7,299.93	0.00	0.00	0.00
13,100.00	90.00	180.13	5,735.00	-7,330.28	1,012.71	7,399.14	0.00	0.00	0.00
13,200.00	90.00	180.13	5,735.00	-7,430.28	1,012.48	7,498.36	0.00	0.00	0.00
13,300.00	90.00	180.13	5,735.00	-7,530.28	1,012.25	7,597.57	0.00	0.00	0.00
13,400.00	90.00	180.13	5,735.00	-7,630.28	1,012.01	7,696.79	0.00	0.00	0.00
13,500.00	90.00	180.13	5,735.00	-7,730.28	1,011.78	7,796.01	0.00	0.00	0.00
13,600.00	90.00	180.13	5,735.00	-7,830.28	1,011.55	7,895.22	0.00	0.00	0.00
13,700.00	90.00	180.13	5,735.00	-7,930.28	1,011.32	7,994.44	0.00	0.00	0.00
13,800.00	90.00	180.13	5,735.00	-8,030.28	1,011.09	8,093.66	0.00	0.00	0.00
13,900.00	90.00	180.13	5,735.00	-8,130.28	1,010.86	8,192.87	0.00	0.00	0.00
13,949.06	90.00	180.13	5,735.00	-8,179.34	1,010.74	8,241.55	0.00	0.00	0.00
TD at 13949.06									

Design Targets									
Target Name	Dip Angle (°)	Dip Dir. (°)	TVD (usft)	+N/-S (usft)	+E/-W (usft)	Northing (usft)	Easting (usft)	Latitude	Longitude
- hit/miss target									
- Shape									
PBHL 3138	0.00	0.00	5,735.00	-8,179.34	1,010.74	1,534,485.81	3,471,577.08	40° 47' 17.220 N	103° 47' 48.960 W
- plan hits target center									
- Point									



WOG Planning Report

Database:	LandmarkEDM	Local Co-ordinate Reference:	Well Horsetail #30E-3138
Company:	Whiting Petroleum Corp.	TVD Reference:	KBE @ 4827.40usft (Original Well Elev)
Project:	Weld County, CO	MD Reference:	KBE @ 4827.40usft (Original Well Elev)
Site:	Sec 30-T10N-R57W	North Reference:	True
Well:	Horsetail #30E-3138	Survey Calculation Method:	Minimum Curvature
Wellbore:	Hz		
Design:	APD		

Casing Points					
Measured Depth (usft)	Vertical Depth (usft)	Name	Casing Diameter (in)	Hole Diameter (in)	
6,157.70	5,735.00	7"	7.000	8.750	

Formations						
Measured Depth (usft)	Vertical Depth (usft)	Name	Lithology	Dip (°)	Dip Direction (°)	
1,575.56	1,550.00	Upper Pierre				
3,590.91	3,500.00	Hygiene				
3,745.93	3,650.00	Lower Pierre				
5,582.00	5,448.00	P200 Marker				
5,612.69	5,475.00	P300 Marker				
5,625.49	5,486.00	P350 Marker				
5,639.68	5,498.00	Sharon Springs				
5,642.07	5,500.00	Niobrara				
5,661.45	5,516.00	Top A Chalk				
5,701.88	5,548.00	Top A Marl				
5,717.72	5,560.00	A Marl				
5,725.80	5,566.00	Top Upper B				
5,759.37	5,590.00	Base Upper B				
5,783.05	5,606.00	Top Lower B				
5,831.20	5,636.00	Base Lower B				
5,848.66	5,646.00	Top B Marl				
5,939.57	5,690.00	Top C Chalk				
5,965.65	5,700.00	Middle C Chalk				
6,009.28	5,714.00	Middle C Marl				
6,157.70	5,735.00	Lower C Chalk				

Plan Annotations					
Measured Depth (usft)	Vertical Depth (usft)	Local Coordinates			
		+N/-S (usft)	+E/-W (usft)	Comment	
300.00	300.00	0.00	0.00	Build 2°/100'	
1,031.50	1,023.58	11.90	92.12	Hold 14.63° Inc	
4,407.82	4,290.42	121.10	937.88	Drop 2°/100'	
5,139.32	5,014.00	133.00	1,030.00	Hold Vertical	
5,339.32	5,214.00	133.00	1,030.00	KOP, Build 11°/100'	
6,157.70	5,735.00	-388.00	1,028.79	LP @ 90° Inc, Hold	
13,949.06	5,735.00	-8,179.34	1,010.74	TD at 13949.06	