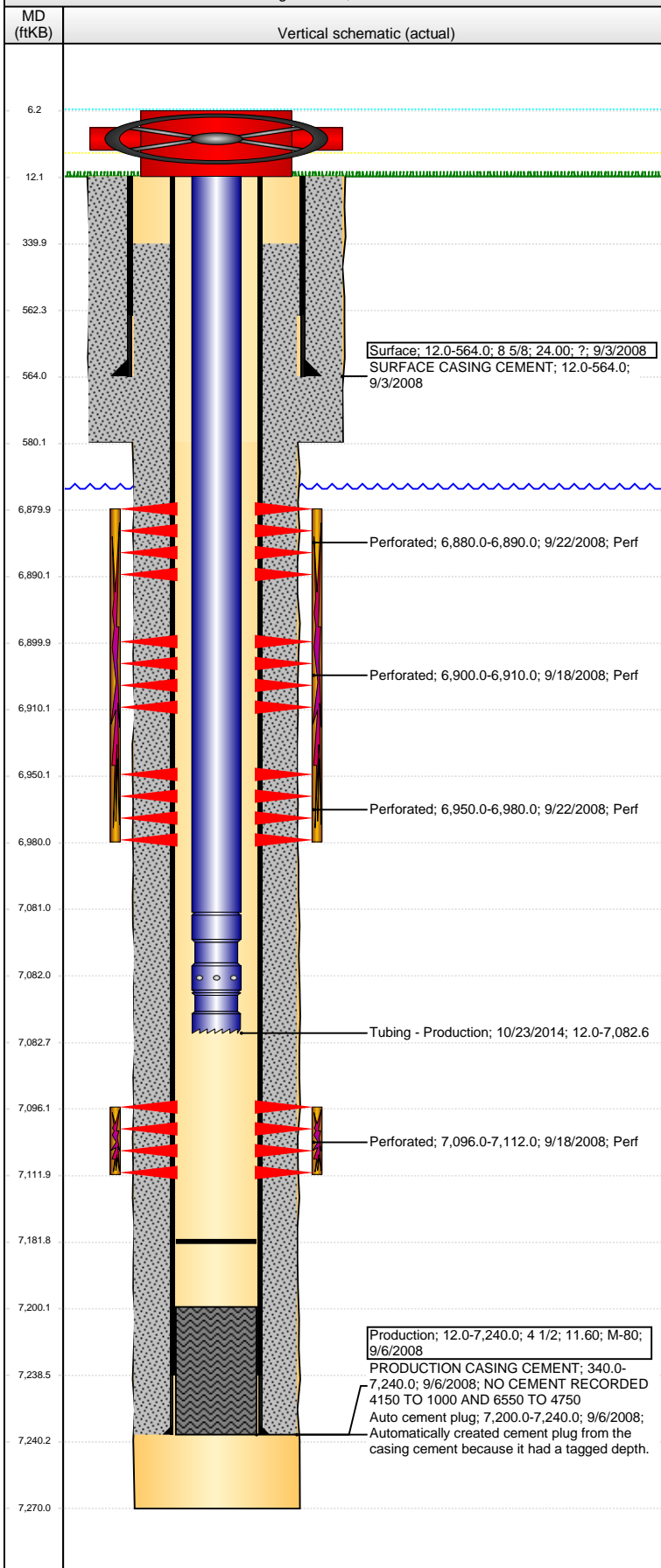


# Wellbore Schematic Input Report

**Well Name: BROOMFIELD 24-45**

VERTICAL - Original Hole, 12/1/2015 8:31:45 AM



Well Header								
API 05-123-25652		Business Unit DJ BASIN		District 15		Well Config VERTICAL		
Original KB Elevation (ft) 4,826.00		KB - GL / MSL (ftKB) 12.00		Spud Date 9/2/2008		P & A Date		
Comment DISCREPANCY: DR RPT TD DATE 9/5/2008; ST RPT TD DATE 9/4/2008								
Directions To Well RD 44 & 49, S 6/10, W 1/10, S 1/10, W INTO.								
Congressional Location								
Quarter 1	Quarter 2	Quarter 3 SE	Quarter 4 SE	Section 24	Township 4 N	Twnshp N...	Range 65	Rng E/W Dir W
Bottom Hole Location								
North-South Distance (ft)		From N or S Line		East-West Distance (ft)			From E or W Line	
Plug Back Total Depths								
Date	Depth (ftKB)	Method			Com			
9/16/2008	7,200.0	CASED HOLE LOG			DEPTH LOGGER ON CBL			
11/23/2008	7,200.0	TAG			CLEAN OUT TO LAND TUBING			
1/7/2013	7,189.0	TAG						
2/28/2013	7,190.0	TAG						
10/21/2014	7,181.7	TAG			TAG 13' IN ON 4TH JT			
Wellbore Sections								
Section Des			Size (in)		Act Top, MD (ftKB)		Act Btm, MD (ftKB)	
SURFACE			12 1/4		12.0		580.0	
PRODUCTION			7 7/8		580.0		7,270.0	
Zone Statuses								
Zone Name	Status Date	Status	Fluid Type		Job	Prod Method		
CODELL	9/18/2008	PR			DRILLING/CO...			
NIOBRARA	9/22/2008	PR			DRILLING/CO...			
Casing Strings								
Surface, 564.0ftKB								
Casing Description Surface		Run Date 9/3/2008	OD (in) 8 5/8	Wt/Len (l... 24.00	Grade ?	Top, MD (ft... 12.0	MD (ftKB) 564.0	
Production, 7,240.0ftKB								
Casing Description Production		Run Date 9/6/2008	OD (in) 4 1/2	Wt/Len (l... 11.60	Grade M-80	Top, MD (ft... 12.0	MD (ftKB) 7,240.0	
Cement								
Description SURFACE CASING CEMENT					Top Depth (ftKB) 12.0		Bottom Depth (ftKB) 564.0	
Description PRODUCTION CASING CEMENT					Top Depth (ftKB) 340.0		Bottom Depth (ftKB) 7,240.0	
Tubing Strings								
Tubing Description Tubing		Run Date 11/25/2008	String... 2 3/8	ID (in) 1.867	Wt (lb/ft)	Grade	Len (ft) 6,808.00	Set De... 00
Tubing Description Tubing - Production		Run Date 1/8/2013	String... 2 3/8	ID (in) 1.995	Wt (lb/ft) 4.70	Grade J-55	Len (ft) 6,099.54	Set De... 54
Tubing Description Tubing - Production		Run Date 2/28/2013	String... 2 3/8	ID (in) 1.995	Wt (lb/ft) 4.70	Grade J-55	Len (ft) 7,082.05	Set De... 05
Tubing Description Tubing - Production		Run Date 10/23/2014	String... 2 3/8	ID (in) 1.995	Wt (lb/ft) 4.70	Grade J-55	Len (ft) 7,070.58	Set De... 58
Tubing Components								
Item Des		OD (in)	Wt (lb/ft)	Grade	Jts	Len (ft)	Btm (ftKB)	Btm (TVD) (ftKB)
EUE 8rd Tubing		2 3/8	4.70	J-55	218	7,069.08	7,081.1	
Pump Seating Nipple		2 3/8			1	1.10	7,082.2	
Notched collar		2 3/8			1	0.40	7,082.6	
Perforation Data								
Zone		Bnch/St g	Entered Shot Total	Top (ftKB)		Btm (ftKB)		Date
NIOBRARA, Original Hole		A	20	6,880.00		6,890.00		9/22/2008
NIOBRARA, Original Hole		A	20	6,900.00		6,910.00		9/18/2008
NIOBRARA, Original Hole		C	120	6,950.00		6,980.00		9/22/2008
CODELL, Original Hole			64	7,096.00		7,112.00		9/18/2008

**Well Name: BROOMFIELD 24-45**

VERTICAL - Original Hole, 12/1/2015 8:31:47 AM

## Stimulations & Treatments

Date	Zone	Primary Job Type
9/18/2008	CODELL, Original Hole	DRILLING/COMPLETION - ORIGINAL

Technical Result	Tech Result Details	Tech Result Note

Comment

Date	Zone	Primary Job Type
9/18/2008	NIOBRARA, Original Hole	DRILLING/COMPLETION - ORIGINAL

Technical Result	Tech Result Details	Tech Result Note

Comment

## Other In Hole

Run Date	Des	OD (in)	Top (ftKB)	Btm (ftKB)

## Logs

Date	Type	Top, MD (ftKB)	Btm, MD (ftKB)
9/5/2008	COMPENSATED DENSITY	3,650.0	7,250.0
9/5/2008	INDUCTION	564.0	7,270.0
9/16/2008	CEMENT BOND	200.0	6,550.0
9/16/2008	CEMENT BOND	1,000.0	7,198.0

