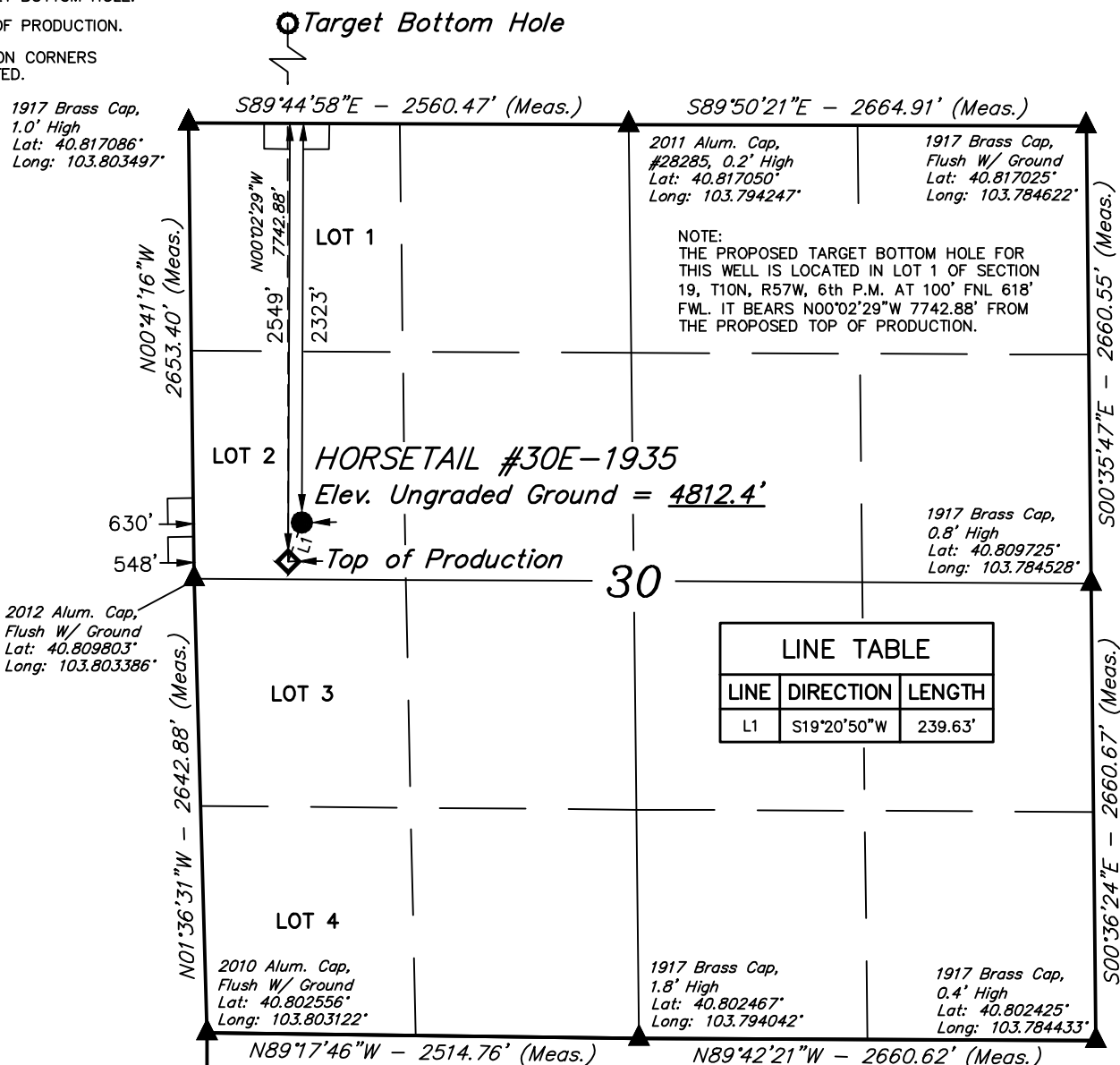


LEGEND:

- = 90° SYMBOL
 ● = PROPOSED WELLHEAD.
 ○ = TARGET BOTTOM HOLE.
 ◆ = TOP OF PRODUCTION.
 ▲ = SECTION CORNERS LOCATED.

T10N, R57W, 6th P.M.



R 58 W
R 57 W

PDOP = 1.2

NAD 83 (TOP OF PRODUCTION)	NAD 83 (SURFACE LOCATION)
LATITUDE = 40°48'36.30" (40.810083)	LATITUDE = 40°48'38.53" (40.810703)
LONGITUDE = 103°48'05.08" (103.801411)	LONGITUDE = 103°48'04.04" (103.801122)
NAD 27 (TOP OF PRODUCTION)	NAD 27 (SURFACE LOCATION)
LATITUDE = 40°48'36.35" (40.810097)	LATITUDE = 40°48'38.58" (40.810717)
LONGITUDE = 103°48'03.27" (103.800908)	LONGITUDE = 103°48'02.24" (103.800622)

BASIS OF BEARINGS
BASIS OF BEARINGS IS A G.P.S. OBSERVATION

BASIS OF ELEVATION

SPOT ELEVATION LOCATED AT THE NORTHEAST CORNER OF SECTION 15, T9N, R58W, 6th P.M. TAKEN FROM THE GATEHOOK SPRING, QUADRANGLE, COLORADO, WELD COUNTY, 7.5 MINUTE QUAD (TOPOGRAPHIC MAP) PUBLISHED BY THE UNITED STATES DEPARTMENT OF THE INTERIOR, GEOLOGICAL SURVEY. SAID ELEVATION IS MARKED AS BEING 4679 FEET.



UELS, LLC
Corporate Office * 85 South 200 East
Vernal, UT 84078 * (435) 789-1017

**CERTIFICATE**

THIS IS TO CERTIFY THAT THE ABOVE PLAT WAS PREPARED FROM FIELD NOTES OF ACTUAL SURVEYS MADE BY ME OR UNDER MY SUPERVISION AND THAT THE SAME ARE TRUE AND CORRECT TO THE BEST OF MY KNOWLEDGE AND BELIEF.

REGISTERED LAND SURVEYOR
REGISTRATION NO. 28285
STATE OF COLORADO

WHITING OIL & GAS CORP.

HORSETAIL #30E-1935 (SURFACE LOCATION)
LOT 2, SECTION 30, T10N, R57W, 6th P.M.
WELD COUNTY, COLORADO

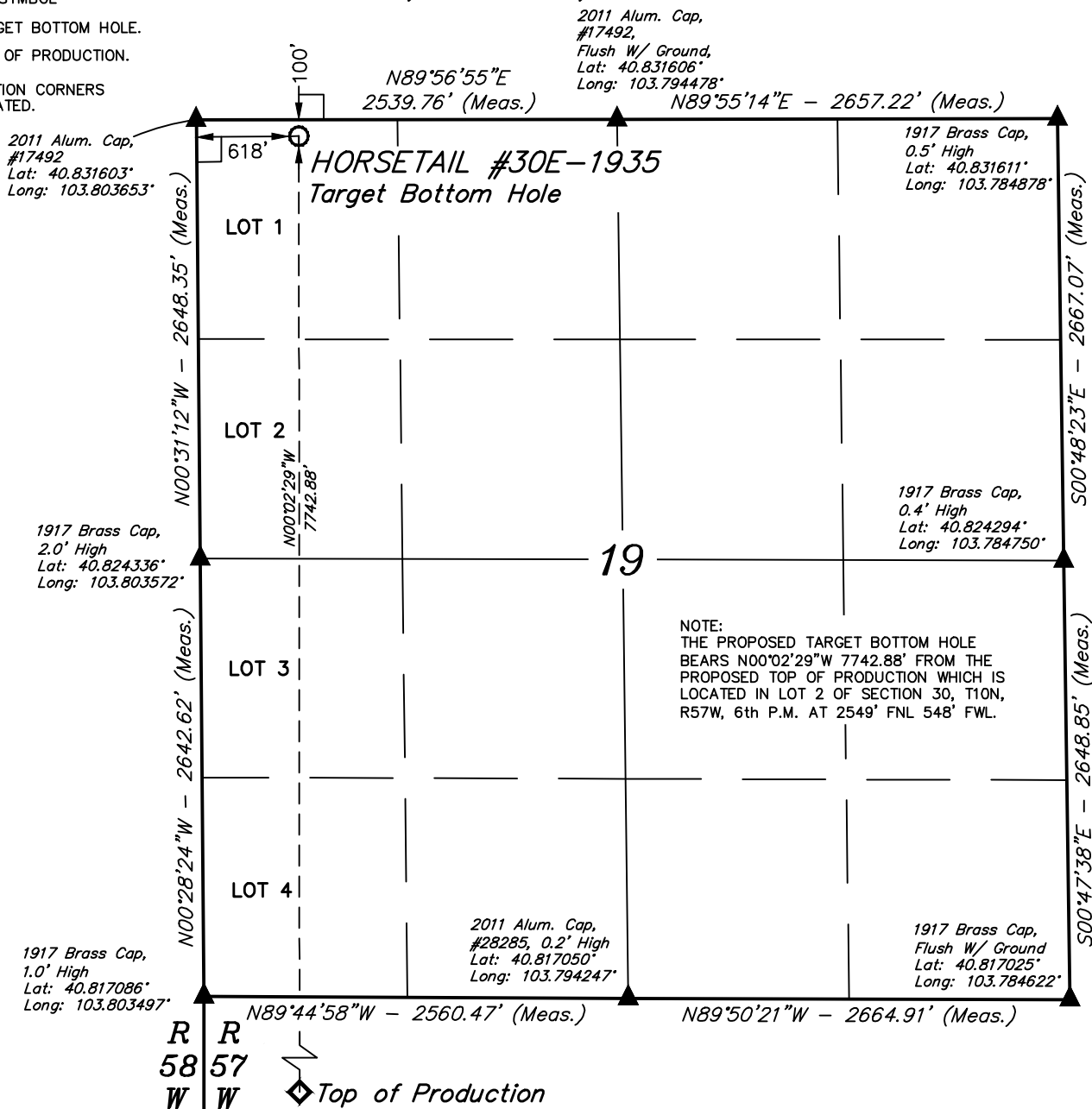
SURVEYED BY: JARED CHRISTOPHER, B.C.	DATE: 04-24-15
DRAWN BY: H.K.W.	DATE DRAWN: 02-18-14
SCALE: 1" = 1000'	REVISED: 11-23-15 J.M.C.

WELL LOCATION PLAT

LEGEND:

- = 90° SYMBOL
 ○ = TARGET BOTTOM HOLE.
 ◇ = TOP OF PRODUCTION.
 ▲ = SECTION CORNERS LOCATED.

T10N, R57W, 6th P.M.



NOTE:
THE PROPOSED TARGET BOTTOM HOLE
BEARS N00°02'29\"W 7742.88' FROM THE
PROPOSED TOP OF PRODUCTION WHICH IS
LOCATED IN LOT 2 OF SECTION 30, T10N,
R57W, 6th P.M. AT 2549' FNL 548' FWL.

NAD 83 (TARGET BOTTOM HOLE)
LATITUDE = 40°49'52.79\" (40.831331)
LONGITUDE = 103°48'05.11\" (103.801419)
NAD 27 (TARGET BOTTOM HOLE)
LATITUDE = 40°49'52.84\" (40.831344)
LONGITUDE = 103°48'03.30\" (103.800917)

**CERTIFICATE**

THIS IS TO CERTIFY THAT THE ABOVE PLAT WAS PREPARED FROM FIELD NOTES OF ACTUAL SURVEYS MADE BY ME OR UNDER MY SUPERVISION AND THAT THE SAME ARE TRUE AND CORRECT TO THE BEST OF MY KNOWLEDGE AND BELIEF.

REGISTERED LAND SURVEYOR
REGISTRATION NO. 28285
STATE OF COLORADO

BASIS OF BEARINGS
BASIS OF BEARINGS IS A G.P.S. OBSERVATION

BASIS OF ELEVATION

SPOT ELEVATION LOCATED AT THE NORTHEAST CORNER OF SECTION 15, T9N, R58W, 6th P.M. TAKEN FROM THE GATEHOOK SPRING, QUADRANGLE, COLORADO, WELD COUNTY, 7.5 MINUTE QUAD (TOPOGRAPHIC MAP) PUBLISHED BY THE UNITED STATES DEPARTMENT OF THE INTERIOR, GEOLOGICAL SURVEY. SAID ELEVATION IS MARKED AS BEING 4679 FEET.

**WHITING OIL & GAS CORP.**

**HORSETAIL #30E-1935 (TARGET BOTTOM HOLE)
LOT 1, SECTION 19, T10N, R57W, 6th P.M.
WELD COUNTY, COLORADO**

SURVEYED BY: JARED CHRISTOPHER, B.C.	DATE: 04-24-15
DRAWN BY: H.K.W.	DATE DRAWN: 02-18-14
SCALE: 1" = 1000'	REVISED: 11-23-15 J.M.C.

WELL LOCATION PLAT

UELS, LLC
Corporate Office * 85 South 200 East
Vernal, UT 84078 * (435) 789-1017