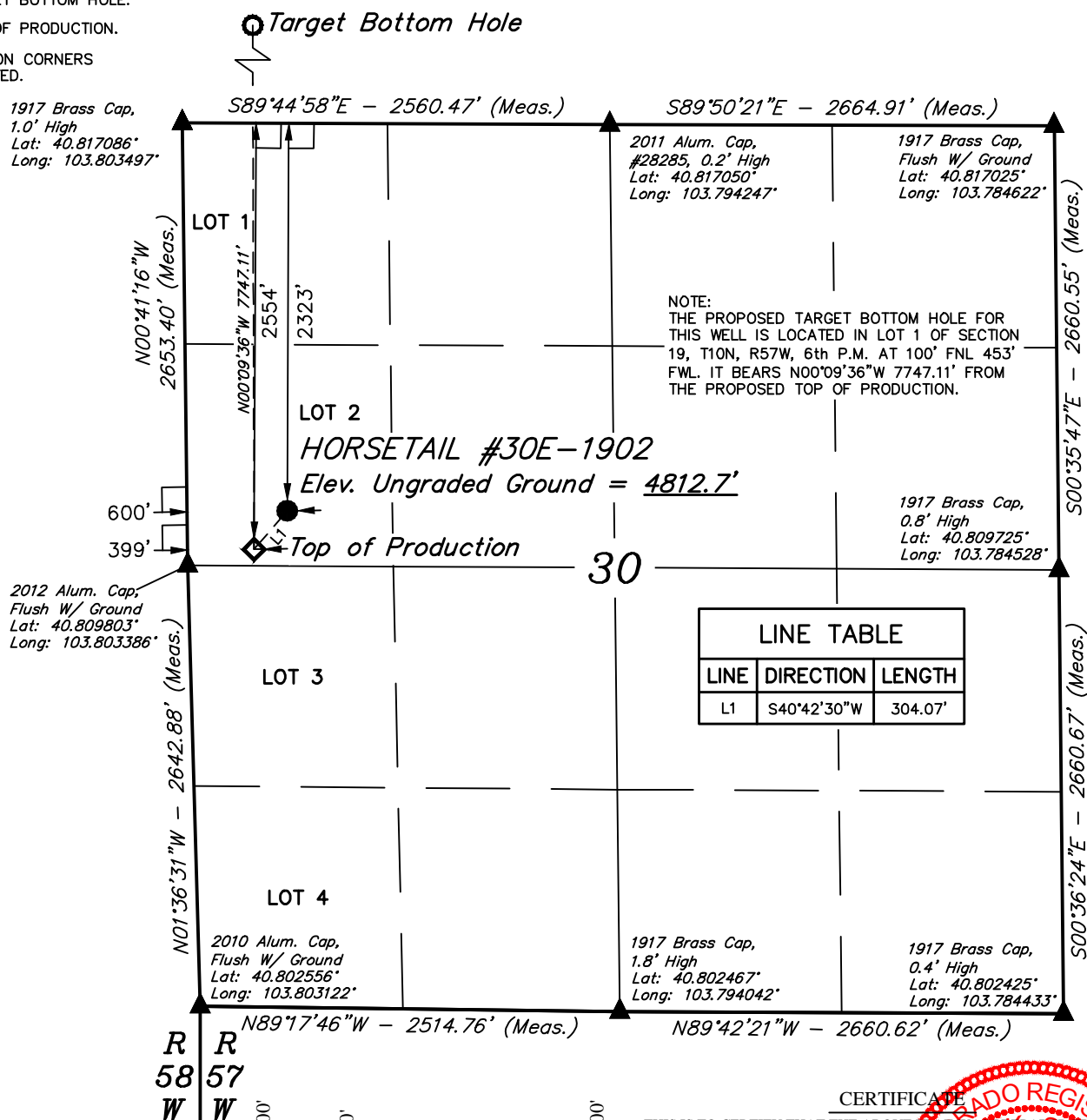


LEGEND:

- = 90° SYMBOL
- = PROPOSED WELLHEAD.
- = TARGET BOTTOM HOLE.
- ◇ = TOP OF PRODUCTION.
- ▲ = SECTION CORNERS LOCATED.

T10N, R57W, 6th P.M.



LINE TABLE		
LINE	DIRECTION	LENGTH
L1	S40°42'30\"W	304.07'

PDOP = 1.2

NAD 83 (TOP OF PRODUCTION)	NAD 83 (SURFACE LOCATION)
LATITUDE = 40°48'36.25\" (40.810069)	LATITUDE = 40°48'38.53\" (40.810703)
LONGITUDE = 103°48'07.01\" (103.801947)	LONGITUDE = 103°48'04.43\" (103.801231)
NAD 27 (TOP OF PRODUCTION)	NAD 27 (SURFACE LOCATION)
LATITUDE = 40°48'36.31\" (40.810086)	LATITUDE = 40°48'38.58\" (40.810717)
LONGITUDE = 103°48'05.21\" (103.801447)	LONGITUDE = 103°48'02.63\" (103.800731)

BASIS OF BEARINGS
BASIS OF BEARINGS IS A G.P.S. OBSERVATION

BASIS OF ELEVATION

SPOT ELEVATION LOCATED AT THE NORTHEAST CORNER OF SECTION 15, T9N, R58W, 6th P.M. TAKEN FROM THE GATEHOOK SPRING, QUADRANGLE, COLORADO, WELD COUNTY, 7.5 MINUTE QUAD (TOPOGRAPHIC MAP) PUBLISHED BY THE UNITED STATES DEPARTMENT OF THE INTERIOR, GEOLOGICAL SURVEY. SAID ELEVATION IS MARKED AS BEING 4679 FEET.

CERTIFICATE
THIS IS TO CERTIFY THAT THE ABOVE PLAT WAS PREPARED FROM FIELD NOTES OF ACTUAL SURVEYS MADE BY ME OR UNDER MY SUPERVISION AND THAT THE SAME ARE TRUE AND CORRECT TO THE BEST OF MY KNOWLEDGE AND BELIEF.

REGISTERED LAND SURVEYOR
REGISTRATION NO. 28285
STATE OF COLORADO

WHITING OIL & GAS CORP.

HORSETAIL #30E-1902 (SURFACE LOCATION)
LOT 2, SECTION 30, T10N, R57W, 6th P.M.
WELD COUNTY, COLORADO

SURVEYED BY: JARED CHRISTOPHER, B.C.	DATE: 04-24-15
DRAWN BY: H.K.W.	DATE DRAWN: 02-18-14
SCALE: 1" = 1000'	REVISED: 11-23-15 J.M.C.

WELL LOCATION PLAT



UELS, LLC
Corporate Office * 85 South 200 East
Vernal, UT 84078 * (435) 789-1017



LEGEND:

- = 90° SYMBOL
 ○ = TARGET BOTTOM HOLE.
 ◇ = TOP OF PRODUCTION.
 ▲ = SECTION CORNERS LOCATED.

T10N, R57W, 6th P.M.

2011 Alum. Cap,
 #17492,
 Flush W/ Ground,
 Lat: 40.831606°
 Long: 103.794478°

2011 Alum. Cap,
 #17492
 Lat: 40.831603°
 Long: 103.803653°

HORSETAIL #30E-1902
 Target Bottom Hole

1917 Brass Cap,
 0.5' High
 Lat: 40.831611°
 Long: 103.784878°

1917 Brass Cap,
 2.0' High
 Lat: 40.824336°
 Long: 103.803572°

1917 Brass Cap,
 0.4' High
 Lat: 40.824294°
 Long: 103.784750°

1917 Brass Cap,
 1.0' High
 Lat: 40.817086°
 Long: 103.803497°

2011 Alum. Cap,
 #28285, 0.2' High
 Lat: 40.817050°
 Long: 103.794247°

1917 Brass Cap,
 Flush W/ Ground
 Lat: 40.817025°
 Long: 103.784622°

NOTE:
 THE PROPOSED TARGET BOTTOM HOLE
 BEARS N00°09'36"W 7747.11' FROM THE
 PROPOSED TOP OF PRODUCTION WHICH IS
 LOCATED IN LOT 2 OF SECTION 30, T10N,
 R57W, 6th P.M. AT 2554' FNL 399' FWL.

R 58 W
 R 57 W
 Top of Production

NAD 83 (TARGET BOTTOM HOLE)
LATITUDE = 40°49'52.79" (40.831331)
LONGITUDE = 103°48'07.25" (103.802014)
NAD 27 (TARGET BOTTOM HOLE)
LATITUDE = 40°49'52.84" (40.831344)
LONGITUDE = 103°48'05.44" (103.801511)

**CERTIFICATE**

THIS IS TO CERTIFY THAT THE ABOVE PLAT WAS PREPARED FROM FIELD
 NOTES OF ACTUAL SURVEYS MADE BY ME OR UNDER MY SUPERVISION
 AND THAT THE SAME ARE TRUE AND CORRECT TO THE BEST OF MY
 KNOWLEDGE AND BELIEF.

REGISTERED LAND SURVEYOR
 REGISTRATION NO. 28285
 STATE OF COLORADO

BASIS OF BEARINGS
 BASIS OF BEARINGS IS A G.P.S. OBSERVATION

BASIS OF ELEVATION

SPOT ELEVATION LOCATED AT THE NORTHEAST CORNER OF SECTION 15, T9N, R58W,
 6th P.M. TAKEN FROM THE GATEHOOK SPRING, QUADRANGLE, COLORADO, WELD
 COUNTY, 7.5 MINUTE QUAD (TOPOGRAPHIC MAP) PUBLISHED BY THE UNITED STATES
 DEPARTMENT OF THE INTERIOR, GEOLOGICAL SURVEY. SAID ELEVATION IS MARKED
 AS BEING 4679 FEET.

**WHITING OIL & GAS CORP.**

HORSETAIL #30E-1902 (TARGET BOTTOM HOLE)
LOT 1, SECTION 19, T10N, R57W, 6th P.M.
WELD COUNTY, COLORADO

SURVEYED BY: JARED CHRISTOPHER, B.C.	DATE: 04-24-15
DRAWN BY: H.K.W.	DATE DRAWN: 02-18-14
SCALE: 1" = 1000'	REVISED: 11-23-15 J.M.C.

WELL LOCATION PLAT

UELS, LLC
 Corporate Office * 85 South 200 East
 Vernal, UT 84078 * (435) 789-1017