

Well: Fee 86X (4724)
Field: Rangley, Co.

Survey Data

05-103-07569-01

Remarks

Run No.29

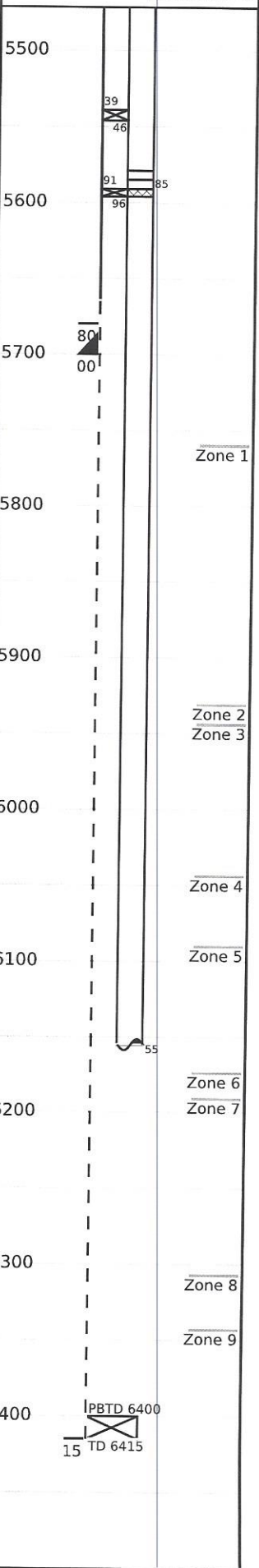
Survey Type: T-S-T
Date: 12/02/2015
Metered Rate: 4500 B/D
Measured Rate: 844 B/D
Desired Rate: N/A
Service Co: PLS
Surface Temp: 76.6 °F
BHT: 121.8 °F
TBG Pressure: 1400 PSI
CSG Pressure: 0 PSI
Pick Up: 5823' TDL
Inj. Fluid: CO₂

R/A Tracer indicates casing shoe and packer O.K.

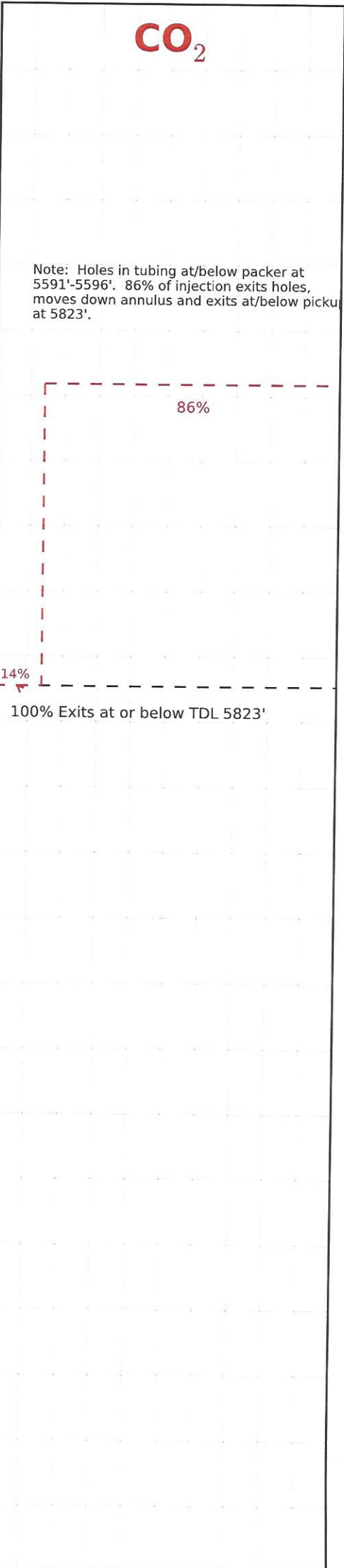
Recorded By: Matt Stratton

Mechanical Information

7" 23# Casing 0'-5700'
Open Hole 5665'-5680'
Open Hole 5665'-6415'
Tubing Hole 5591'-5596'
P.B.T.D 6400'-6415'
2-7/8" F.L. Tubing 0'-5539'
Top Packer 5539'-5546'
2-7/8" F.G.W & PC INT 5546'-5579'
On/Off Tool 1.875" "F" 5579'-5585'
Packer 5591'-5596'
2-3/8" F.G. Tubing 5596'-6155'
API No. L-23 "C"

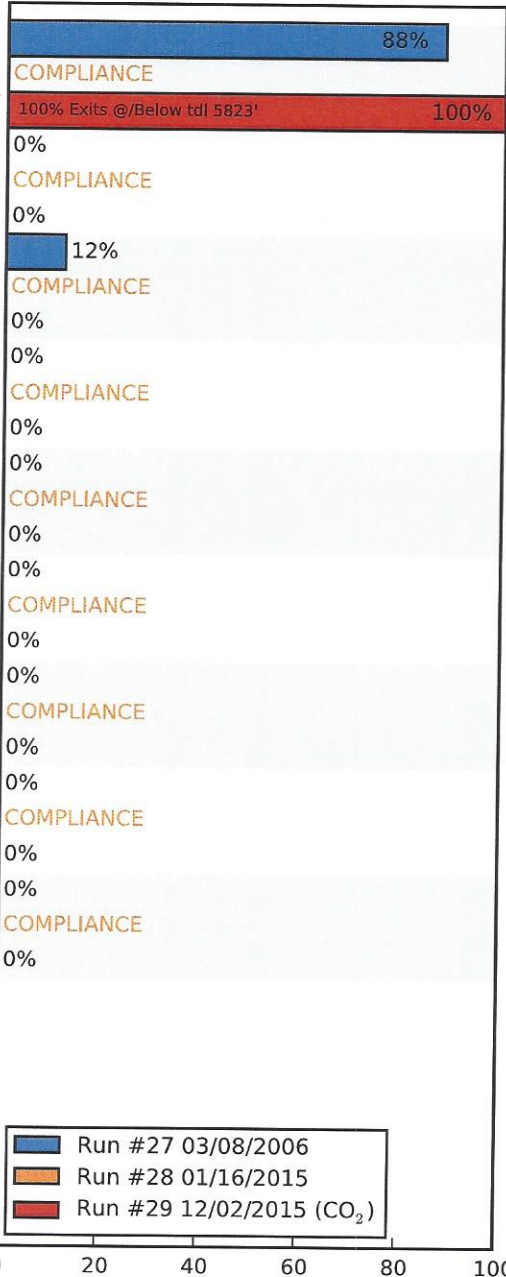


0% 50% 100%



(%) Injected Into Zone

Zone 1
5760-5931



Zone 2
5931-5944

Zone 3
5944-6044

Zone 4
6044-6090

Zone 5
6090-6183

Zone 6
6183-6191

Zone 7
6191-6307

Zone 8
6307-6343

Zone 9
6343-6415

Average Temperature (°F)

	Run #27 03/08/2006	Run #28 01/16/2015	Run #29 12/02/2015
Surface	96.0	79.1	76.6
5760-5931	--	--	--
TDL (5823)	109.0	121.6	121.8
5931-5944	--	--	--
5944-6044	--	--	--
6044-6090	--	--	--
6090-6183	--	--	--
6183-6191	--	--	--
6191-6307	--	--	--
6307-6343	--	--	--
6343-6415	--	--	--
Rate (B/D)	835	110	844
Press (PSI)	1525	1500	1400