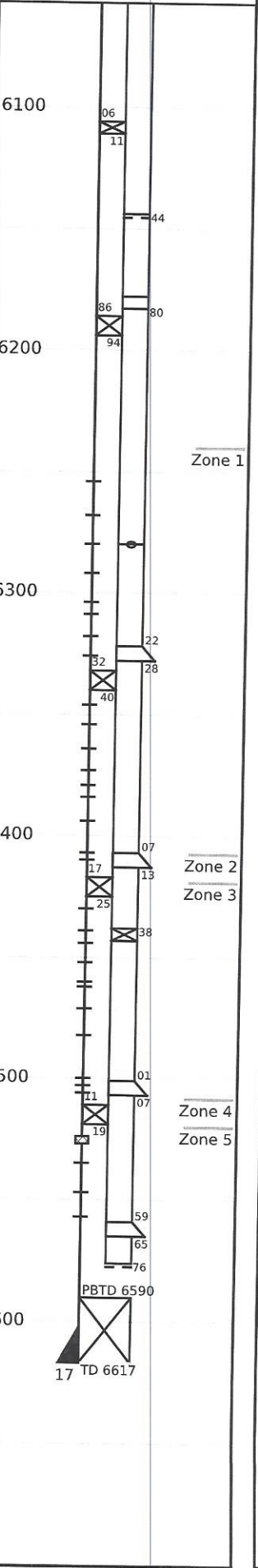


Well: Fee 67A (A3811)
Field: RWSU

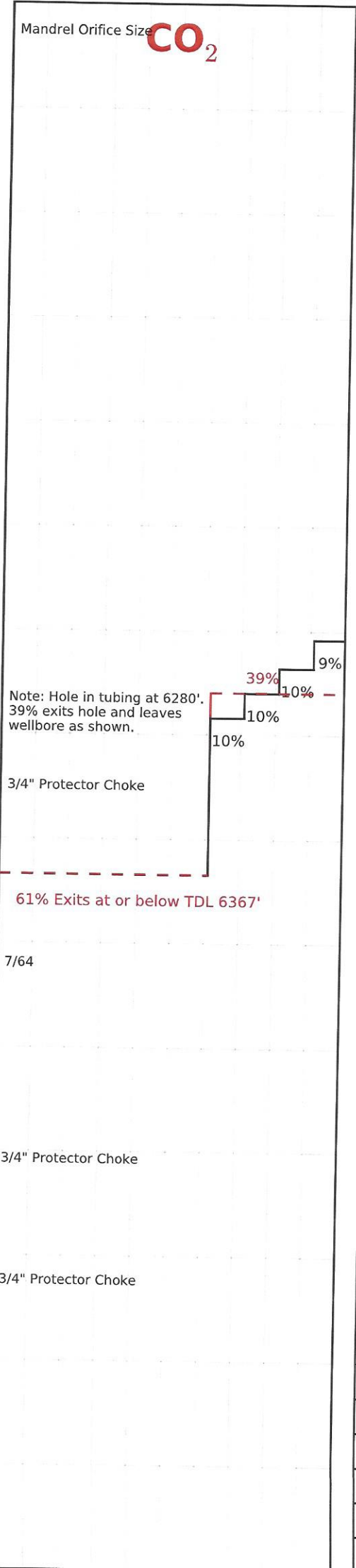
Run No.35		
Survey Type: T-S-T	Surface Temp: 61.5 °F	R/A Tracer indicates top perf and packer O.K. Recorded By: J.R. Hacking
Date: 12/07/2015	BHT: 121.4 °F	
Metered Rate: N/A	TBG Pressure: 2000 PSI	
Measured Rate: 1003 B/D	CSG Pressure: 0 PSI	
Desired Rate: N/A	Pick Up: 6367' TDL	
Service Co: PLS	Inj. Fluid: CO ₂	

Mechanical Information

7" 23# Casing	0'-6617'
P.B.T.D	6590'-6617'
2-7/8" F.L. Tubing	0'-6106'
Top Packer	6106'-6111'
2-7/8" F.G.W. Tubing	6111'-6143'
1.875 "F" Nipple	6143'-6144'
2-7/8" F.G.W. Tubing	6144'-6178'
On/Off Tool 1.875" "X"	6178'-6180'
2-3/8" I&E Chrome 1 Moly	6180'-6575'
"R" Nipple	6575'-6576'
	F-19 "A"
API No. 051030929300	



0% 50% 100%



(%) Injected Into Zone

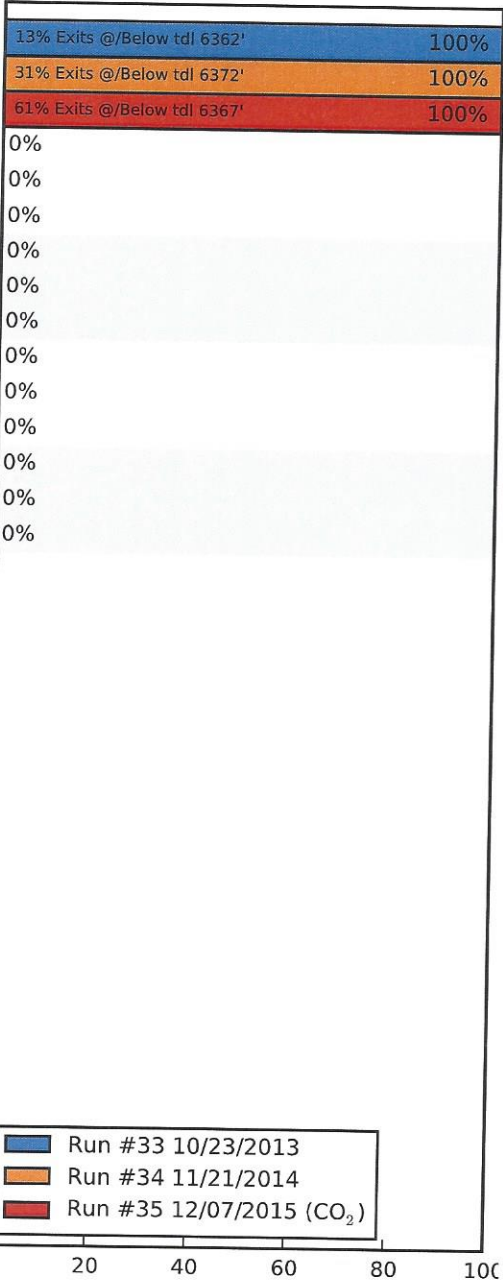
Zone 1
6240-6413

Zone 2
6413-6419

Zone 3
6419-6514

Zone 4
6514-6520

Zone 5
6520-6617



	Run #33 10/23/2013	Run #34 11/21/2014	Run #35 12/07/2015
Surface	89.0	89.1	61.5
6240-6413	--	--	--
TDL (6367)	105.6	--	121.4
6413-6419	--	--	--
6419-6514	--	--	--
6514-6520	--	--	--
6520-6617	--	--	--
Rate (B/D)	1520	927	1003
Press (PSI)	1600	1600	2000