

Run No.21

Survey Type: T-S-T  
Date: 11/24/2015  
Metered Rate: N/A  
Measured Rate: 633 B/D  
Desired Rate: N/A  
Service Co: PLS

Surface Temp: 80.6 °F  
BHT: 133.1 °F  
TBG Pressure: 1900 PSI  
CSG Pressure: 0 PSI  
Pick Up: 5841' TDL  
Inj. Fluid: CO<sub>2</sub>

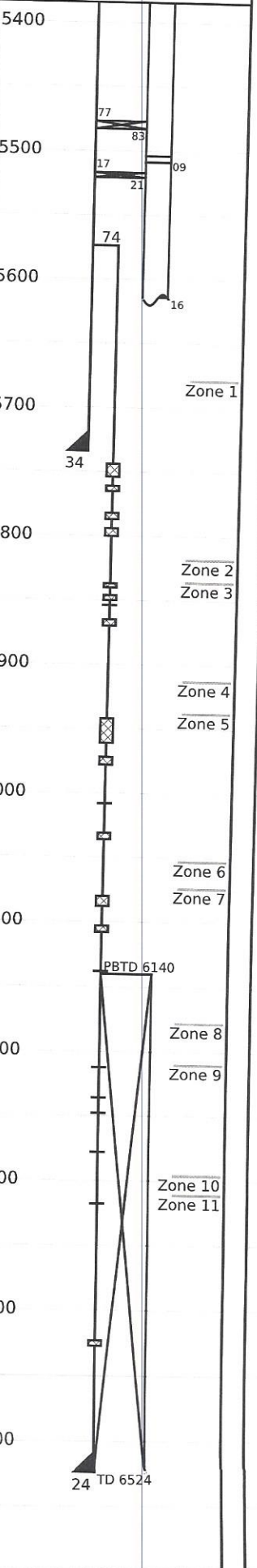
R/A Tracer indicates top perf and packers O.K.

Recorded By: Matt Stratton

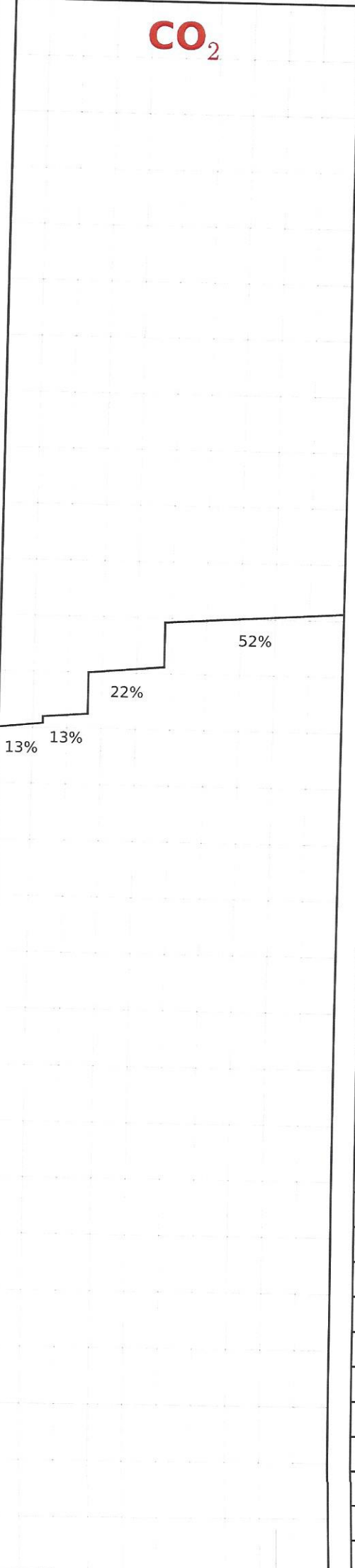
Well: Fee 48  
(3233)  
Field: Rangley, Co.

Mechanical Information

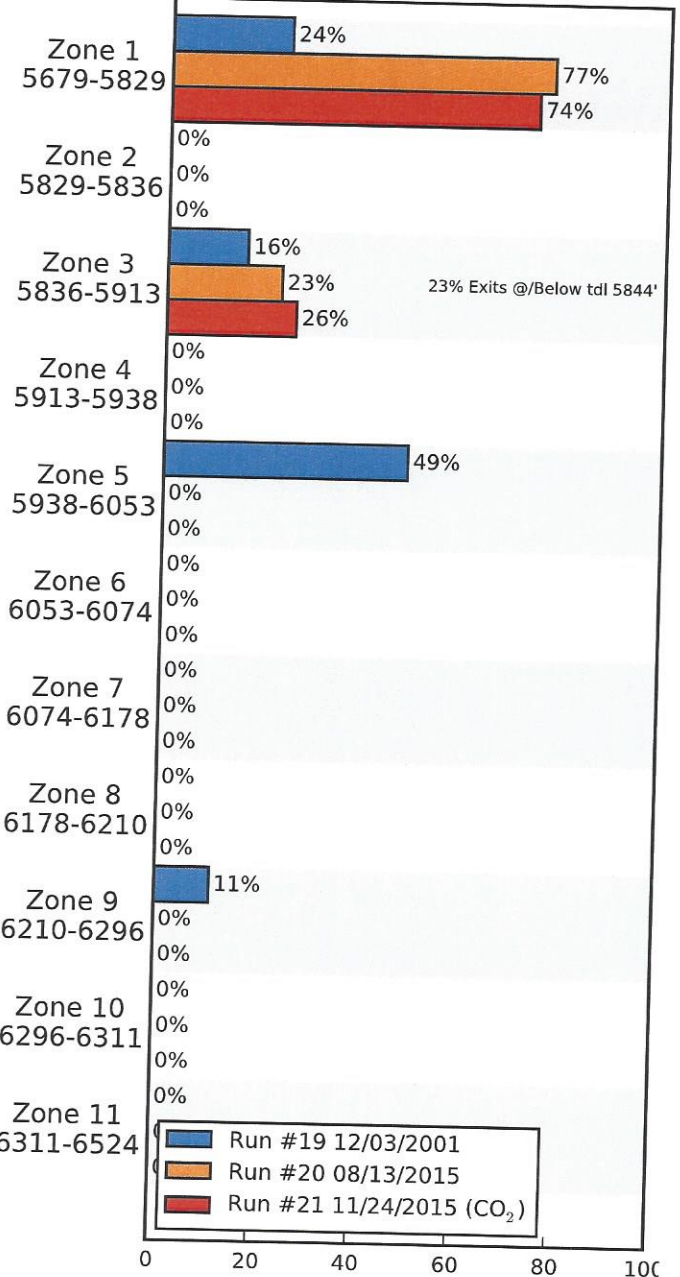
7" 26# Casing	0'-5734'
5" 18# Liner	5574'-6524'
P.B.T.D	6140'-6524'
2-7/8" F.L. Tubing	0'-5477'
Top Packer	5477'-5483'
2-7/8" F.G.W. TK-15	5483'-5504'
1.875" On/Off Tool	5504'-5509'
2-7/8" F.G.W. TK-15	5509'-5517'
Packer	5517'-5521'
2-3/8" F.G.W. TK-15	5521'-5616'
	Q-16 "B"



0% 50% 100%



(%) Injected Into Zone



Average Temperature (°F)

	Run #19 12/03/2001	Run #20 08/13/2015	Run #21 11/24/2015
Surface	92.6	97.5	80.6
5679-5829	--	--	--
5829-5836	--	--	--
5836-5913	--	--	--
TDL (5841)	126.0	140.8	133.1
5913-5938	--	--	--
5938-6053	--	--	--
6053-6074	--	--	--
6074-6178	--	--	--
6178-6210	--	--	--
6210-6296	--	--	--
6296-6311	--	--	--
6311-6524	--	--	--
Rate (B/D)	750	64	633
Press (PSI)	1800	1800	1900