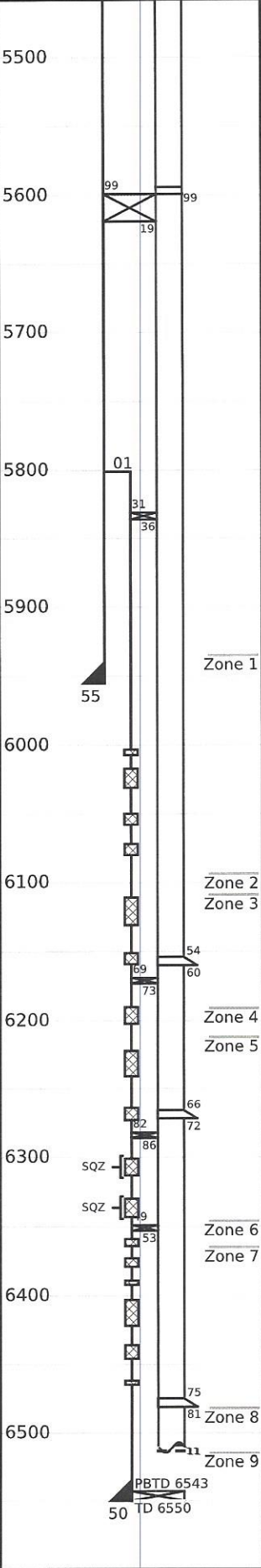




Well: Fee 43 (3015)
Field: Rangley, Co.

Mechanical Information

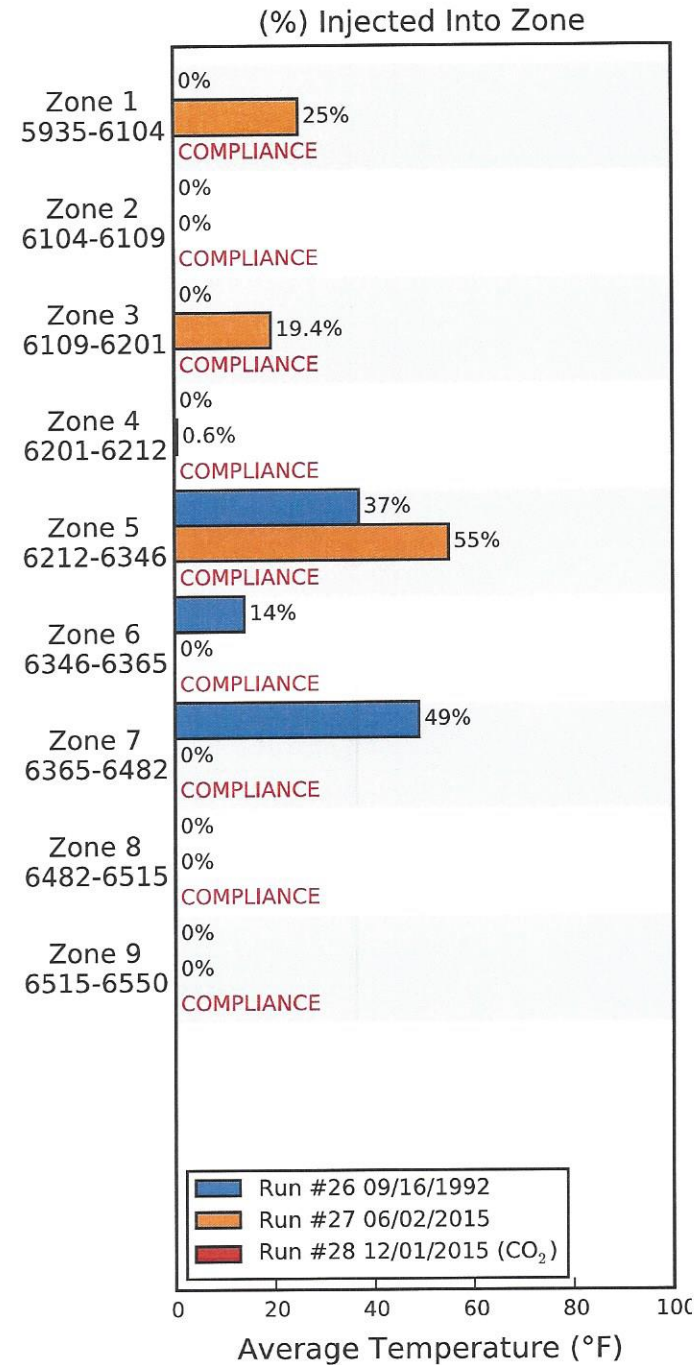
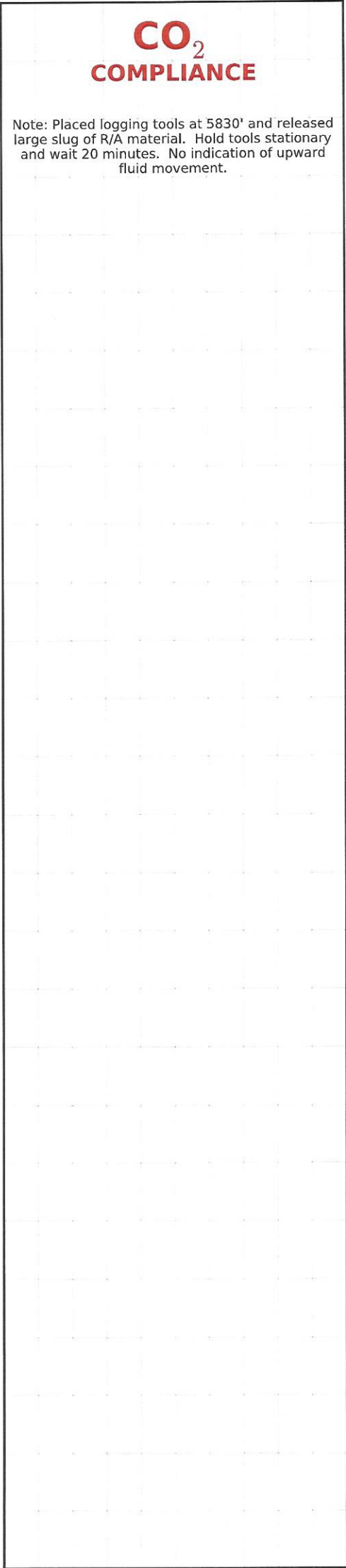
| | |
|------------------------|-------------|
| 7" 23# Casing | 0'-5955' |
| 5" 18# Liner | 5801'-6550' |
| P.B.T.D | 6543'-6550' |
| 2-7/8" F.L. Tubing | 0'-5594' |
| On/Off Tool | 5594'-5599' |
| Top Packer | 5599'-5619' |
| 2-7/8" F.G.W. F.L. Tbg | 5619'-6677' |
| 2-3/8" FGW TK-15 | 5677'-5831' |
| Packer | 5831'-5836' |
| 2-3/8" FGW TK-15 | 5836'-5889' |
| Bowen Tubing Patch | 5889'-5891' |
| "R" Nipple | 6511' |
| | H-15 "2" |



Survey Data 05-103-06141

Remarks

| Run No.28 | | R/A Tracer indicates top packers O.K. Recorded By: Matt Stratton |
|--------------------------|-----------------------------|---|
| Survey Type: T-S-T | Surface Temp: 86.5 °F | |
| Date: 12/01/2015 | BHT: 124.7 °F | |
| Metered Rate: 2900 mcf/d | TBG Pressure: 1900 PSI | |
| Measured Rate: 1598 B/D | CSG Pressure: 0 PSI | |
| Desired Rate: N/A | Pick Up: 5831' TDL | |
| Service Co: PLS | Inj. Fluid: CO ₂ | |



| | Run #26 09/16/1992 | Run #27 06/02/2015 | Run #28 12/01/2015 |
|-------------|-----------------------|-----------------------|-----------------------|
| Surface | 129.2 | 101.4 | 86.5 |
| TDL (5831) | 155.0 | 138.3 | 124.7 |
| 5935-6104 | -- | -- | -- |
| 6104-6109 | -- | -- | -- |
| 6109-6201 | -- | -- | -- |
| 6201-6212 | -- | -- | -- |
| 6212-6346 | -- | -- | -- |
| 6346-6365 | -- | -- | -- |
| 6365-6482 | -- | -- | -- |
| 6482-6515 | -- | -- | -- |
| 6515-6550 | -- | -- | -- |
| | | | |
| | | | |
| | | | |
| Rate (B/D) | 1600 | 1558 | 1598 |
| Press (PSI) | 1750 | 1180 | 1900 |