

Survey Data

05-103-09187

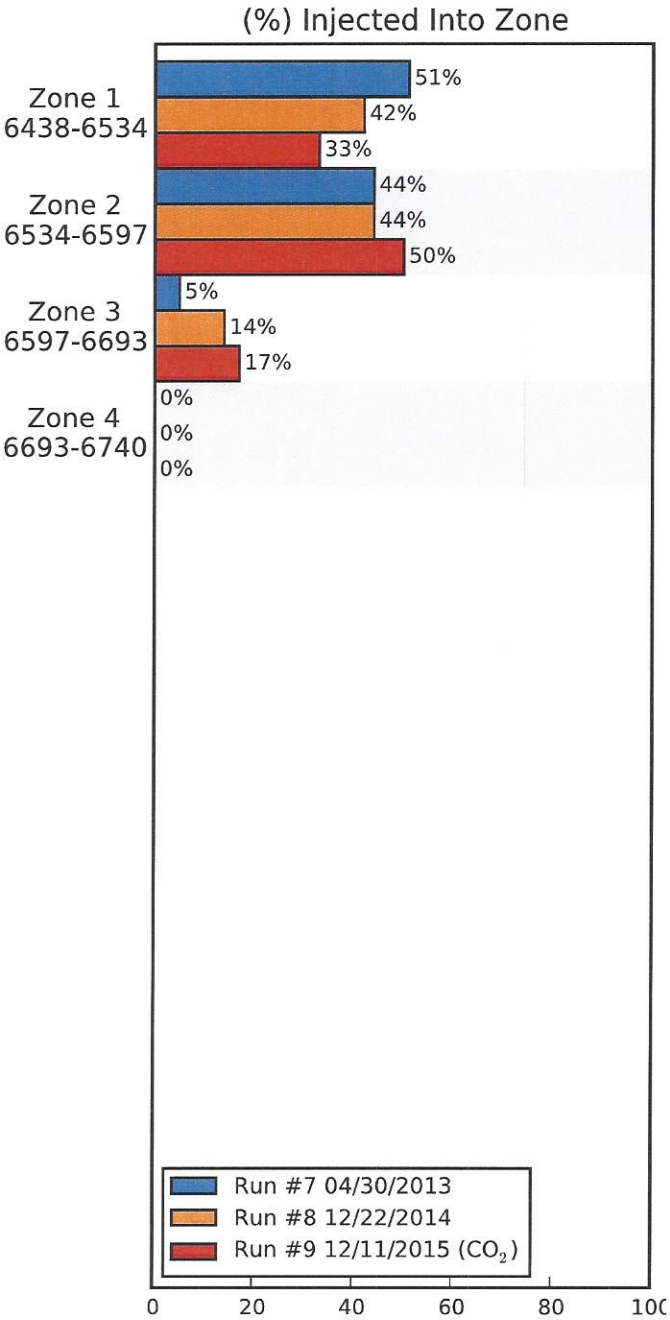
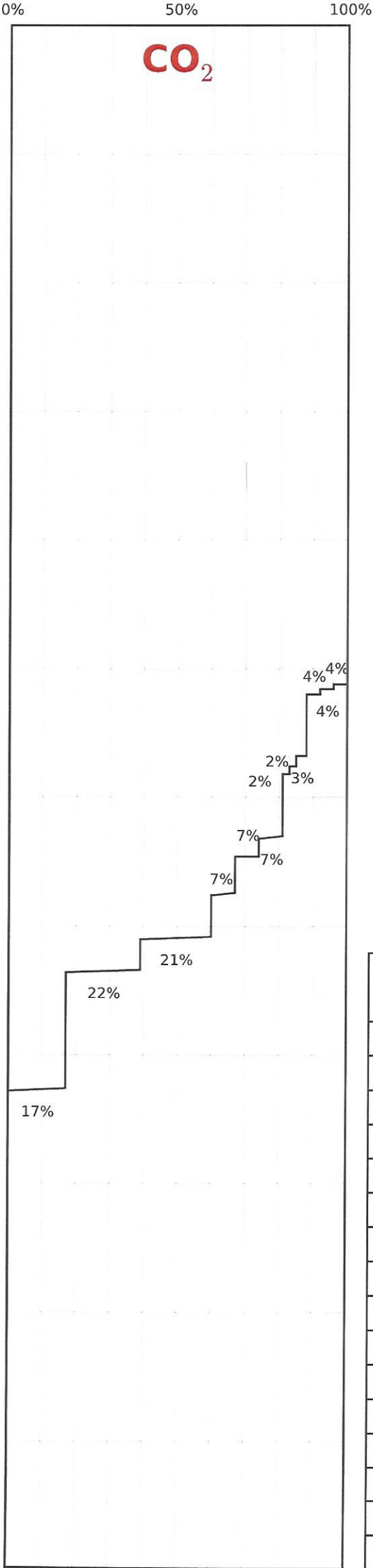
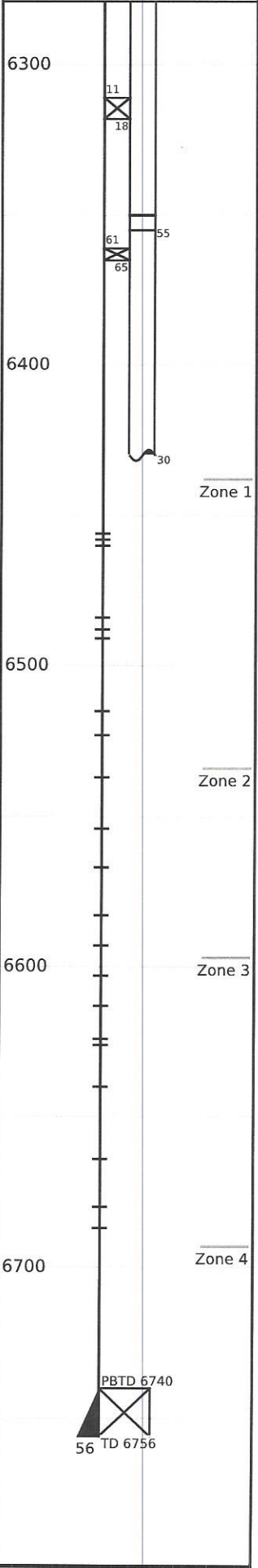
Remarks

Well: Emerald 44AX
(A2031)
Field: Rangley, Co.

Run No.9		
Survey Type: T-S-T	Surface Temp: 55.1 °F	R/A Tracer indicates top perf and packer O.K.
Date: 12/11/2015	BHT: 167.2 °F	
Metered Rate: 755 mcf/d	TBG Pressure: 2100 PSI	
Measured Rate: 176 B/D	CSG Pressure: 0 PSI	
Desired Rate: N/A	Pick Up: 6733' TDL	
Service Co: PLS	Inj. Fluid: CO ₂	
		Recorded By: J.R. Hacking

Mechanical Information

7" 23# Casing	0'-6756'
P.B.T.D	6740'
2-7/8" F.L. Tubing	0'-6311'
Top Packer	6311'-6318'
2-3/8" F.G.W. Tubing	6318'-6350'
On/Off Tool	6350'-6355'
2-7/8" Tubing	6355'-6361'
Packer	6361'-6365'
2-7/8" Tubing	6365'-6430'
W.E.G.	6430'-6430'
	P-10 "C"



	Run #7 04/30/2013	Run #8 12/22/2014	Run #9 12/11/2015
Surface	79.1	100.3	55.1
6438-6534	--	--	--
6534-6597	--	--	--
6597-6693	--	--	--
6693-6740	--	--	--
TDL (6733)	165.4	166.6	167.2
Rate (B/D)	333	679	176
Press (PSI)	1607	1720	2100