

PROJECT DETAILS: North Park Basin

Geodetic System: US State Plane 1983
Datum: North American Datum 1983
Ellipsoid: GRS 1980
Zone: Colorado Northern Zone

System Datum: Mean Sea Level

G
↑
T
M

Azimuths to Grid North
True North: 0.59°
Magnetic North: 10.49°

Magnetic Field
Strength: 53187.5nT
Dip Angle: 66.97°
Date: 12/31/2009
Model: IGRF200510

FORMATION TOP DETAILS

No formation data is available

CASING DETAILS

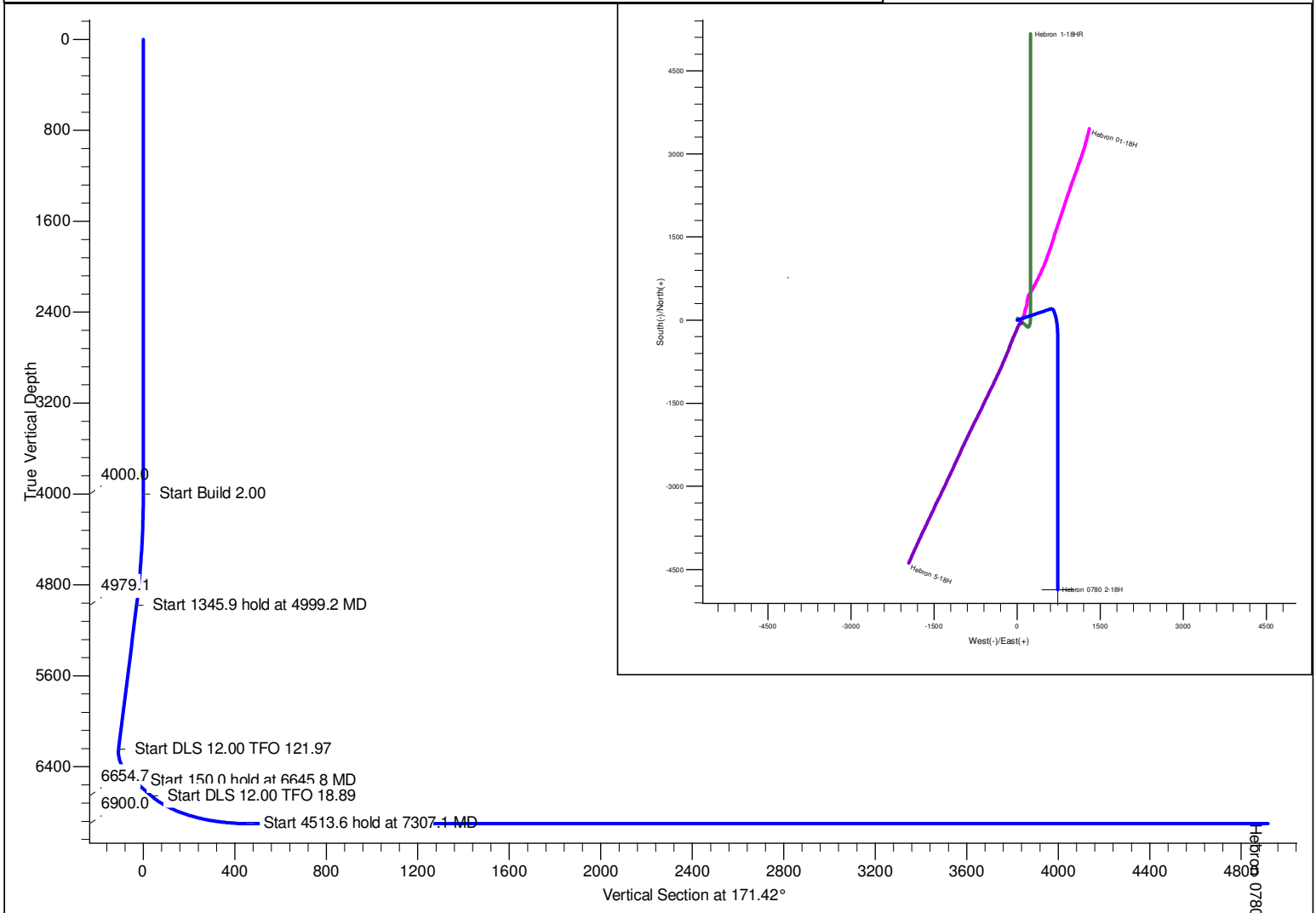
No casing data is available

DESIGN DETAILS: Design #1

0' Vertical Section coordinates

Type	Target	Azimuth	Origin	Type	N/S	E/W	From	TVD
TD		171.42	Slot		0.0	0.0		0.0

Project: North Park Basin
Site: T7N-R80W-S7
Wellbore: Hebron 0780 2-18H
Design: Design #1



SECTION DETAILS											
Sec	MD	Inc	Azi	TVD	+N/-S	+E/-W	Dleg	TFace	VSect	Target	
1	0.0	0.00	0.00	0.0	0.0	0.0	0.00	0.00	0.0		
2	4000.0	0.00	0.00	4000.0	0.0	0.0	0.00	0.00	0.0		
3	4999.2	19.98	71.57	4979.1	54.5	163.6	2.00	71.57	-29.5		
4	6345.1	19.98	71.57	6243.9	200.0	600.0	0.00	0.00	-108.2		
5	6645.8	30.00	163.50	6524.8	142.2	672.5	12.00	121.97	-40.3		
6	6795.8	30.00	163.50	6654.7	70.3	693.8	0.00	0.00	34.0		
7	7307.1	90.00	180.00	6900.0	-348.7	734.0	12.00	18.89	454.3	Hebron 2-18H Target	
8	11820.7	90.00	180.00	6900.0	-4862.3	733.8	0.00	0.00	4917.3	Hebron 2-18H Target	

SandRidge Energy

North Park Basin

T7N-R80W-S7

Hebron 0780 2-18H

Wellbore #1

Plan: Design #1

Standard Survey Report

09 December, 2015

SandRidge Energy

Survey Report

Company:	SandRidge Energy	Local Co-ordinate Reference:	Well Hebron 0780 2-18H
Project:	North Park Basin	TVD Reference:	WELL @ 8175.0usft (Original Well Elev)
Site:	T7N-R80W-S7	MD Reference:	WELL @ 8175.0usft (Original Well Elev)
Well:	Hebron 0780 2-18H	North Reference:	Grid
Wellbore:	Wellbore #1	Survey Calculation Method:	Minimum Curvature
Design:	Design #1	Database:	EDMProd

Project	North Park Basin		
Map System:	US State Plane 1983	System Datum:	Mean Sea Level
Geo Datum:	North American Datum 1983		
Map Zone:	Colorado Northern Zone		

Site	T7N-R80W-S7		
Site Position:		Northing:	1,456,963.79 usft
From:	Lat/Long	Easting:	2,745,723.26 usft
Position Uncertainty:	0.0 usft	Slot Radius:	13-3/16 "
		Latitude:	40° 35' 2.980 N
		Longitude:	106° 24' 55.770 W
		Grid Convergence:	-0.59 °

Well	Hebron 0780 2-18H		
Well Position	+N/-S	0.0 usft	Northing:
	+E/-W	0.0 usft	Easting:
Position Uncertainty	0.0 usft	Wellhead Elevation:	0.0 usft
		Latitude:	40° 35' 3.368 N
		Longitude:	106° 24' 56.981 W
		Ground Level:	8,156.0 usft

Wellbore	Wellbore #1				
Magnetics	Model Name	Sample Date	Declination (°)	Dip Angle (°)	Field Strength (nT)
	IGRF200510	12/31/2009	9.90	66.97	53,188

Design	Design #1				
Audit Notes:					
Version:	Phase:	PROTOTYPE	Tie On Depth:	0.0	
Vertical Section:	Depth From (TVD) (usft)	+N/-S (usft)	+E/-W (usft)	Direction (°)	
	0.0	0.0	0.0	171.42	

Survey Tool Program	Date	12/9/2015			
From (usft)	To (usft)	Survey (Wellbore)	Tool Name	Description	
0.0	11,819.9	Design #1 (Wellbore #1)	Sperry MWD	Fixed:v2:standard declination	

Planned Survey									
Measured Depth (usft)	Inclination (°)	Azimuth (°)	Vertical Depth (usft)	+N/-S (usft)	+E/-W (usft)	Vertical Section (usft)	Dogleg Rate (°/100usft)	Build Rate (°/100usft)	Turn Rate (°/100usft)
0.0	0.00	0.00	0.0	0.0	0.0	0.0	0.00	0.00	0.00
100.0	0.00	0.00	100.0	0.0	0.0	0.0	0.00	0.00	0.00
200.0	0.00	0.00	200.0	0.0	0.0	0.0	0.00	0.00	0.00
300.0	0.00	0.00	300.0	0.0	0.0	0.0	0.00	0.00	0.00
400.0	0.00	0.00	400.0	0.0	0.0	0.0	0.00	0.00	0.00
500.0	0.00	0.00	500.0	0.0	0.0	0.0	0.00	0.00	0.00
600.0	0.00	0.00	600.0	0.0	0.0	0.0	0.00	0.00	0.00
700.0	0.00	0.00	700.0	0.0	0.0	0.0	0.00	0.00	0.00
800.0	0.00	0.00	800.0	0.0	0.0	0.0	0.00	0.00	0.00
900.0	0.00	0.00	900.0	0.0	0.0	0.0	0.00	0.00	0.00

SandRidge Energy

Survey Report

Company:	SandRidge Energy	Local Co-ordinate Reference:	Well Hebron 0780 2-18H
Project:	North Park Basin	TVD Reference:	WELL @ 8175.0usft (Original Well Elev)
Site:	T7N-R80W-S7	MD Reference:	WELL @ 8175.0usft (Original Well Elev)
Well:	Hebron 0780 2-18H	North Reference:	Grid
Wellbore:	Wellbore #1	Survey Calculation Method:	Minimum Curvature
Design:	Design #1	Database:	EDMProd

Planned Survey

Measured Depth (usft)	Inclination (°)	Azimuth (°)	Vertical Depth (usft)	+N/-S (usft)	+E/-W (usft)	Vertical Section (usft)	Dogleg Rate (°/100usft)	Build Rate (°/100usft)	Turn Rate (°/100usft)
1,000.0	0.00	0.00	1,000.0	0.0	0.0	0.0	0.00	0.00	0.00
1,100.0	0.00	0.00	1,100.0	0.0	0.0	0.0	0.00	0.00	0.00
1,200.0	0.00	0.00	1,200.0	0.0	0.0	0.0	0.00	0.00	0.00
1,300.0	0.00	0.00	1,300.0	0.0	0.0	0.0	0.00	0.00	0.00
1,400.0	0.00	0.00	1,400.0	0.0	0.0	0.0	0.00	0.00	0.00
1,500.0	0.00	0.00	1,500.0	0.0	0.0	0.0	0.00	0.00	0.00
1,600.0	0.00	0.00	1,600.0	0.0	0.0	0.0	0.00	0.00	0.00
1,700.0	0.00	0.00	1,700.0	0.0	0.0	0.0	0.00	0.00	0.00
1,800.0	0.00	0.00	1,800.0	0.0	0.0	0.0	0.00	0.00	0.00
1,900.0	0.00	0.00	1,900.0	0.0	0.0	0.0	0.00	0.00	0.00
2,000.0	0.00	0.00	2,000.0	0.0	0.0	0.0	0.00	0.00	0.00
2,100.0	0.00	0.00	2,100.0	0.0	0.0	0.0	0.00	0.00	0.00
2,200.0	0.00	0.00	2,200.0	0.0	0.0	0.0	0.00	0.00	0.00
2,300.0	0.00	0.00	2,300.0	0.0	0.0	0.0	0.00	0.00	0.00
2,400.0	0.00	0.00	2,400.0	0.0	0.0	0.0	0.00	0.00	0.00
2,500.0	0.00	0.00	2,500.0	0.0	0.0	0.0	0.00	0.00	0.00
2,600.0	0.00	0.00	2,600.0	0.0	0.0	0.0	0.00	0.00	0.00
2,700.0	0.00	0.00	2,700.0	0.0	0.0	0.0	0.00	0.00	0.00
2,800.0	0.00	0.00	2,800.0	0.0	0.0	0.0	0.00	0.00	0.00
2,900.0	0.00	0.00	2,900.0	0.0	0.0	0.0	0.00	0.00	0.00
3,000.0	0.00	0.00	3,000.0	0.0	0.0	0.0	0.00	0.00	0.00
3,100.0	0.00	0.00	3,100.0	0.0	0.0	0.0	0.00	0.00	0.00
3,200.0	0.00	0.00	3,200.0	0.0	0.0	0.0	0.00	0.00	0.00
3,300.0	0.00	0.00	3,300.0	0.0	0.0	0.0	0.00	0.00	0.00
3,400.0	0.00	0.00	3,400.0	0.0	0.0	0.0	0.00	0.00	0.00
3,500.0	0.00	0.00	3,500.0	0.0	0.0	0.0	0.00	0.00	0.00
3,600.0	0.00	0.00	3,600.0	0.0	0.0	0.0	0.00	0.00	0.00
3,700.0	0.00	0.00	3,700.0	0.0	0.0	0.0	0.00	0.00	0.00
3,800.0	0.00	0.00	3,800.0	0.0	0.0	0.0	0.00	0.00	0.00
3,900.0	0.00	0.00	3,900.0	0.0	0.0	0.0	0.00	0.00	0.00
4,000.0	0.00	0.00	4,000.0	0.0	0.0	0.0	0.00	0.00	0.00
Start Build 2.00									
4,100.0	2.00	71.57	4,100.0	0.6	1.7	-0.3	2.00	2.00	0.00
4,200.0	4.00	71.57	4,199.8	2.2	6.6	-1.2	2.00	2.00	0.00
4,300.0	6.00	71.57	4,299.5	5.0	14.9	-2.7	2.00	2.00	0.00
4,400.0	8.00	71.57	4,398.7	8.8	26.4	-4.8	2.00	2.00	0.00
4,500.0	10.00	71.57	4,497.5	13.8	41.3	-7.4	2.00	2.00	0.00
4,600.0	12.00	71.57	4,595.6	19.8	59.4	-10.7	2.00	2.00	0.00
4,700.0	14.00	71.57	4,693.1	26.9	80.7	-14.6	2.00	2.00	0.00
4,800.0	16.00	71.57	4,789.6	35.1	105.3	-19.0	2.00	2.00	0.00
4,900.0	18.00	71.57	4,885.3	44.3	133.0	-24.0	2.00	2.00	0.00
4,999.2	19.98	71.57	4,979.1	54.5	163.6	-29.5	2.00	2.00	0.00
Start 1345.9 hold at 4999.2 MD									
5,100.0	19.98	71.57	5,073.8	65.4	196.3	-35.4	0.00	0.00	0.00

SandRidge Energy

Survey Report

Company:	SandRidge Energy	Local Co-ordinate Reference:	Well Hebron 0780 2-18H
Project:	North Park Basin	TVD Reference:	WELL @ 8175.0usft (Original Well Elev)
Site:	T7N-R80W-S7	MD Reference:	WELL @ 8175.0usft (Original Well Elev)
Well:	Hebron 0780 2-18H	North Reference:	Grid
Wellbore:	Wellbore #1	Survey Calculation Method:	Minimum Curvature
Design:	Design #1	Database:	EDMProd

Planned Survey

Measured Depth (usft)	Inclination (°)	Azimuth (°)	Vertical Depth (usft)	+N/-S (usft)	+E/-W (usft)	Vertical Section (usft)	Dogleg Rate (°/100usft)	Build Rate (°/100usft)	Turn Rate (°/100usft)
5,200.0	19.98	71.57	5,167.8	76.2	228.7	-41.3	0.00	0.00	0.00
5,300.0	19.98	71.57	5,261.8	87.1	261.2	-47.1	0.00	0.00	0.00
5,400.0	19.98	71.57	5,355.7	97.9	293.6	-53.0	0.00	0.00	0.00
5,500.0	19.98	71.57	5,449.7	108.7	326.0	-58.8	0.00	0.00	0.00
5,600.0	19.98	71.57	5,543.7	119.5	358.4	-64.7	0.00	0.00	0.00
5,700.0	19.98	71.57	5,637.7	130.3	390.9	-70.5	0.00	0.00	0.00
5,800.0	19.98	71.57	5,731.6	141.1	423.3	-76.3	0.00	0.00	0.00
5,900.0	19.98	71.57	5,825.6	151.9	455.7	-82.2	0.00	0.00	0.00
6,000.0	19.98	71.57	5,919.6	162.7	488.1	-88.0	0.00	0.00	0.00
6,100.0	19.98	71.57	6,013.6	173.5	520.5	-93.9	0.00	0.00	0.00
6,200.0	19.98	71.57	6,107.6	184.3	553.0	-99.7	0.00	0.00	0.00
6,300.0	19.98	71.57	6,201.5	195.1	585.4	-105.6	0.00	0.00	0.00
6,345.1	19.98	71.57	6,243.9	200.0	600.0	-108.2	0.00	0.00	0.00
Start DLS 12.00 TFO 121.97									
6,350.0	19.68	73.05	6,248.5	200.5	601.6	-108.5	12.00	-6.23	30.24
6,375.0	18.33	81.29	6,272.2	202.3	609.5	-109.1	12.00	-5.40	32.96
6,400.0	17.38	90.59	6,296.0	202.9	617.1	-108.5	12.00	-3.79	37.19
6,425.0	16.90	100.65	6,319.9	202.2	624.4	-106.7	12.00	-1.91	40.25
6,450.0	16.94	110.97	6,343.8	200.2	631.4	-103.7	12.00	0.13	41.28
6,475.0	17.48	120.96	6,367.7	197.0	638.0	-99.5	12.00	2.16	39.95
6,500.0	18.48	130.13	6,391.5	192.5	644.3	-94.2	12.00	4.01	36.69
6,525.0	19.88	138.23	6,415.1	186.8	650.1	-87.6	12.00	5.59	32.37
6,550.0	21.59	145.19	6,438.5	179.8	655.6	-80.0	12.00	6.85	27.87
6,575.0	23.55	151.12	6,461.6	171.7	660.6	-71.1	12.00	7.84	23.70
6,600.0	25.70	156.14	6,484.3	162.3	665.2	-61.2	12.00	8.61	20.10
6,625.0	28.00	160.42	6,506.6	151.8	669.4	-50.2	12.00	9.19	17.10
6,645.8	30.00	163.50	6,524.8	142.2	672.5	-40.3	12.00	9.61	14.82
Start 150.0 hold at 6645.8 MD									
6,700.0	30.00	163.50	6,571.7	116.3	680.2	-13.5	0.00	0.00	0.00
6,795.8	30.00	163.50	6,654.7	70.3	693.8	34.0	0.00	0.00	0.00
Start DLS 12.00 TFO 18.89									
6,800.0	30.48	163.82	6,658.3	68.3	694.4	36.1	12.00	11.36	7.66
6,825.0	33.33	165.56	6,679.5	55.6	697.9	49.2	12.00	11.42	6.97
6,850.0	36.21	167.06	6,700.1	41.7	701.3	63.4	12.00	11.51	5.98
6,875.0	39.10	168.36	6,719.9	26.8	704.5	78.6	12.00	11.57	5.21
6,900.0	42.01	169.51	6,738.8	10.8	707.6	94.9	12.00	11.62	4.60
6,925.0	44.92	170.54	6,757.0	-6.1	710.6	112.1	12.00	11.66	4.11
6,950.0	47.85	171.46	6,774.2	-24.0	713.4	130.2	12.00	11.70	3.71
6,975.0	50.78	172.31	6,790.5	-42.7	716.1	149.1	12.00	11.72	3.38
7,000.0	53.71	173.09	6,805.8	-62.3	718.6	168.9	12.00	11.75	3.11
7,025.0	56.65	173.81	6,820.1	-82.7	720.9	189.4	12.00	11.76	2.88
7,050.0	59.60	174.48	6,833.3	-103.8	723.1	210.6	12.00	11.78	2.69
7,075.0	62.55	175.12	6,845.4	-125.6	725.1	232.4	12.00	11.79	2.54
7,100.0	65.50	175.72	6,856.4	-148.0	726.9	254.8	12.00	11.80	2.40

SandRidge Energy

Survey Report

Company:	SandRidge Energy	Local Co-ordinate Reference:	Well Hebron 0780 2-18H
Project:	North Park Basin	TVD Reference:	WELL @ 8175.0usft (Original Well Elev)
Site:	T7N-R80W-S7	MD Reference:	WELL @ 8175.0usft (Original Well Elev)
Well:	Hebron 0780 2-18H	North Reference:	Grid
Wellbore:	Wellbore #1	Survey Calculation Method:	Minimum Curvature
Design:	Design #1	Database:	EDMProd

Planned Survey

Measured Depth (usft)	Inclination (°)	Azimuth (°)	Vertical Depth (usft)	+N/-S (usft)	+E/-W (usft)	Vertical Section (usft)	Dogleg Rate (°/100usft)	Build Rate (°/100usft)	Turn Rate (°/100usft)
7,125.0	68.45	176.29	6,866.1	-171.0	728.5	277.8	12.00	11.81	2.29
7,150.0	71.41	176.84	6,874.7	-194.4	729.9	301.2	12.00	11.82	2.20
7,175.0	74.36	177.37	6,882.1	-218.3	731.1	324.9	12.00	11.83	2.13
7,200.0	77.32	177.89	6,888.2	-242.5	732.1	349.0	12.00	11.83	2.07
7,225.0	80.28	178.39	6,893.0	-267.0	732.9	373.4	12.00	11.84	2.02
7,250.0	83.24	178.89	6,896.6	-291.7	733.5	397.9	12.00	11.84	1.98
7,275.0	86.20	179.38	6,898.9	-316.6	733.9	422.6	12.00	11.84	1.96
7,300.0	89.16	179.87	6,899.9	-341.6	734.0	447.3	12.00	11.84	1.95
7,307.1	90.00	180.00	6,900.0	-348.7	734.0	454.3	12.00	11.84	1.94
Start 4513.6 hold at 7307.1 MD									
7,400.0	90.00	180.00	6,900.0	-441.6	734.0	546.2	0.00	0.00	0.00
7,500.0	90.00	180.00	6,900.0	-541.6	734.0	645.1	0.00	0.00	0.00
7,600.0	90.00	180.00	6,900.0	-641.6	734.0	744.0	0.00	0.00	0.00
7,700.0	90.00	180.00	6,900.0	-741.6	734.0	842.8	0.00	0.00	0.00
7,800.0	90.00	180.00	6,900.0	-841.6	734.0	941.7	0.00	0.00	0.00
7,900.0	90.00	180.00	6,900.0	-941.6	734.0	1,040.6	0.00	0.00	0.00
8,000.0	90.00	180.00	6,900.0	-1,041.6	734.0	1,139.5	0.00	0.00	0.00
8,100.0	90.00	180.00	6,900.0	-1,141.6	734.0	1,238.4	0.00	0.00	0.00
8,200.0	90.00	180.00	6,900.0	-1,241.6	734.0	1,337.2	0.00	0.00	0.00
8,300.0	90.00	180.00	6,900.0	-1,341.6	734.0	1,436.1	0.00	0.00	0.00
8,400.0	90.00	180.00	6,900.0	-1,441.6	734.0	1,535.0	0.00	0.00	0.00
8,500.0	90.00	180.00	6,900.0	-1,541.6	734.0	1,633.9	0.00	0.00	0.00
8,600.0	90.00	180.00	6,900.0	-1,641.6	734.0	1,732.8	0.00	0.00	0.00
8,700.0	90.00	180.00	6,900.0	-1,741.6	734.0	1,831.6	0.00	0.00	0.00
8,800.0	90.00	180.00	6,900.0	-1,841.6	734.0	1,930.5	0.00	0.00	0.00
8,900.0	90.00	180.00	6,900.0	-1,941.6	733.9	2,029.4	0.00	0.00	0.00
9,000.0	90.00	180.00	6,900.0	-2,041.6	733.9	2,128.3	0.00	0.00	0.00
9,100.0	90.00	180.00	6,900.0	-2,141.6	733.9	2,227.1	0.00	0.00	0.00
9,200.0	90.00	180.00	6,900.0	-2,241.6	733.9	2,326.0	0.00	0.00	0.00
9,300.0	90.00	180.00	6,900.0	-2,341.6	733.9	2,424.9	0.00	0.00	0.00
9,400.0	90.00	180.00	6,900.0	-2,441.6	733.9	2,523.8	0.00	0.00	0.00
9,500.0	90.00	180.00	6,900.0	-2,541.6	733.9	2,622.7	0.00	0.00	0.00
9,600.0	90.00	180.00	6,900.0	-2,641.6	733.9	2,721.5	0.00	0.00	0.00
9,700.0	90.00	180.00	6,900.0	-2,741.6	733.9	2,820.4	0.00	0.00	0.00
9,800.0	90.00	180.00	6,900.0	-2,841.6	733.9	2,919.3	0.00	0.00	0.00
9,900.0	90.00	180.00	6,900.0	-2,941.6	733.9	3,018.2	0.00	0.00	0.00
10,000.0	90.00	180.00	6,900.0	-3,041.6	733.9	3,117.1	0.00	0.00	0.00
10,100.0	90.00	180.00	6,900.0	-3,141.6	733.9	3,215.9	0.00	0.00	0.00
10,200.0	90.00	180.00	6,900.0	-3,241.6	733.9	3,314.8	0.00	0.00	0.00
10,300.0	90.00	180.00	6,900.0	-3,341.6	733.9	3,413.7	0.00	0.00	0.00
10,400.0	90.00	180.00	6,900.0	-3,441.6	733.9	3,512.6	0.00	0.00	0.00
10,500.0	90.00	180.00	6,900.0	-3,541.6	733.9	3,611.5	0.00	0.00	0.00
10,600.0	90.00	180.00	6,900.0	-3,641.6	733.9	3,710.3	0.00	0.00	0.00

SandRidge Energy

Survey Report

Company:	SandRidge Energy	Local Co-ordinate Reference:	Well Hebron 0780 2-18H
Project:	North Park Basin	TVD Reference:	WELL @ 8175.0usft (Original Well Elev)
Site:	T7N-R80W-S7	MD Reference:	WELL @ 8175.0usft (Original Well Elev)
Well:	Hebron 0780 2-18H	North Reference:	Grid
Wellbore:	Wellbore #1	Survey Calculation Method:	Minimum Curvature
Design:	Design #1	Database:	EDMProd

Planned Survey

Measured Depth (usft)	Inclination (°)	Azimuth (°)	Vertical Depth (usft)	+N/-S (usft)	+E/-W (usft)	Vertical Section (usft)	Dogleg Rate (°/100usft)	Build Rate (°/100usft)	Turn Rate (°/100usft)
10,700.0	90.00	180.00	6,900.0	-3,741.6	733.9	3,809.2	0.00	0.00	0.00
10,800.0	90.00	180.00	6,900.0	-3,841.6	733.8	3,908.1	0.00	0.00	0.00
10,900.0	90.00	180.00	6,900.0	-3,941.6	733.8	4,007.0	0.00	0.00	0.00
11,000.0	90.00	180.00	6,900.0	-4,041.6	733.8	4,105.9	0.00	0.00	0.00
11,100.0	90.00	180.00	6,900.0	-4,141.6	733.8	4,204.7	0.00	0.00	0.00
11,200.0	90.00	180.00	6,900.0	-4,241.6	733.8	4,303.6	0.00	0.00	0.00
11,300.0	90.00	180.00	6,900.0	-4,341.6	733.8	4,402.5	0.00	0.00	0.00
11,400.0	90.00	180.00	6,900.0	-4,441.6	733.8	4,501.4	0.00	0.00	0.00
11,500.0	90.00	180.00	6,900.0	-4,541.6	733.8	4,600.3	0.00	0.00	0.00
11,600.0	90.00	180.00	6,900.0	-4,641.6	733.8	4,699.1	0.00	0.00	0.00
11,700.0	90.00	180.00	6,900.0	-4,741.6	733.8	4,798.0	0.00	0.00	0.00
11,800.0	90.00	180.00	6,900.0	-4,841.6	733.8	4,896.9	0.00	0.00	0.00
11,820.7	90.00	180.00	6,900.0	-4,862.3	733.8	4,917.3	0.00	0.00	0.00
TD at 11820.7									

Design Targets

Target Name

- hit/miss target	Dip Angle (°)	Dip Dir. (°)	TVD (usft)	+N/-S (usft)	+E/-W (usft)	Northing (usft)	Easting (usft)	Latitude	Longitude
- Shape									
Hebron 2-18H Target	0.00	0.00	6,900.0	-4,862.3	733.8	1,452,141.76	2,746,364.05	40° 34' 15.398 N	106° 24' 46.822 W
- plan hits target center									
- Point									

Plan Annotations

Measured Depth (usft)	Vertical Depth (usft)	Local Coordinates		Comment
		+N/-S (usft)	+E/-W (usft)	
4000	4000	0	0	Start Build 2.00
4999	4979	55	164	Start 1345.9 hold at 4999.2 MD
6345	6244	200	600	Start DLS 12.00 TFO 121.97
6646	6525	142	673	Start 150.0 hold at 6645.8 MD
6796	6655	70	694	Start DLS 12.00 TFO 18.89
7307	6900	-349	734	Start 4513.6 hold at 7307.1 MD
11,821	6900	-4862	734	TD at 11820.7

Checked By: _____ Approved By: _____ Date: _____