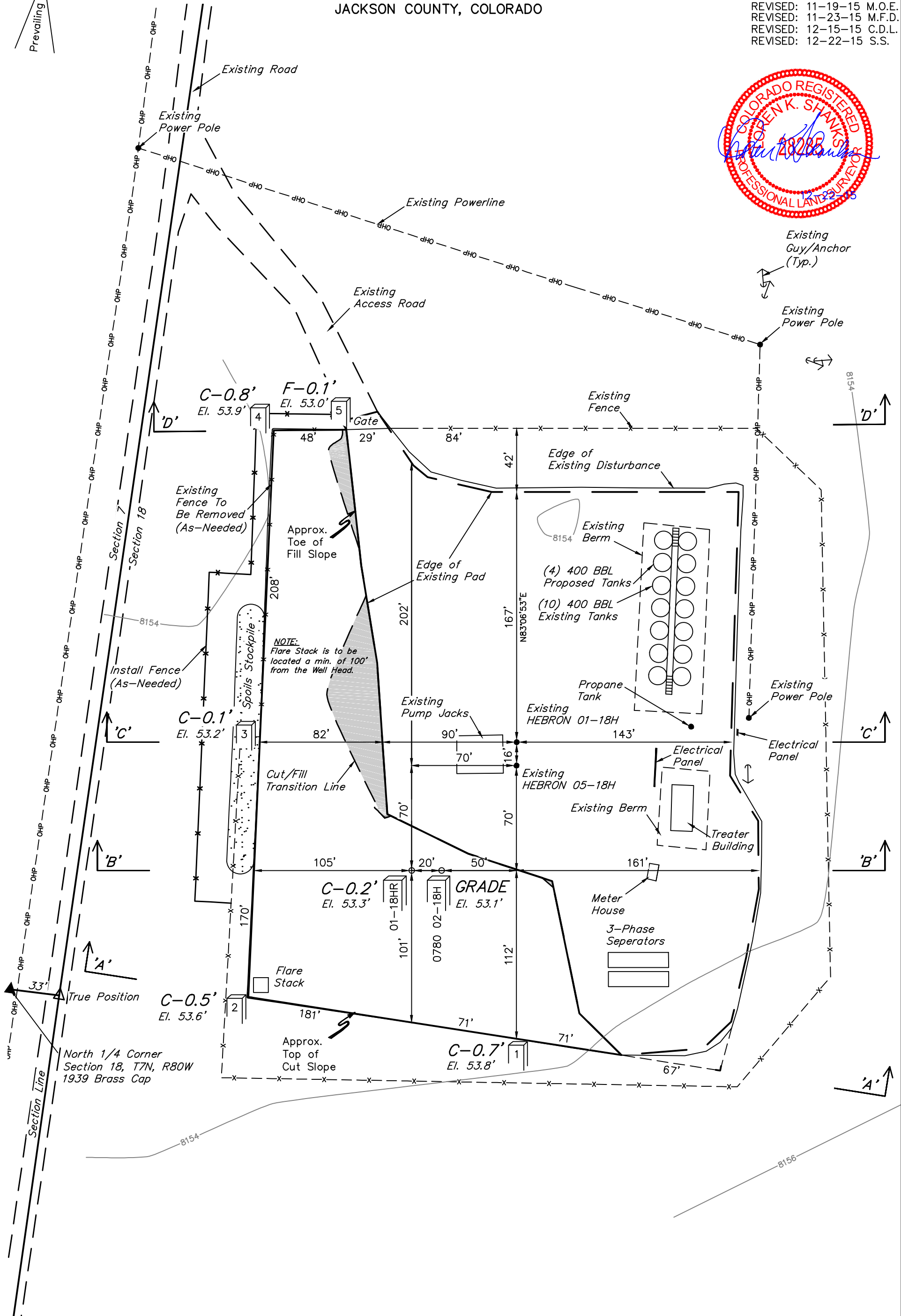
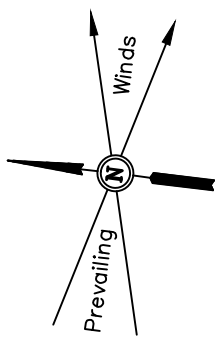


SandRidge Exploration & Production
CONSTRUCTION LAYOUT FOR
HEBRON 01-18HR & 0780 02-18H ON EXISTING
HEBRON 01-18H & 05-18H WELL PAD
NW 1/4 NE 1/4, SECTION 18, T7N, R80W, 6th P.M.
JACKSON COUNTY, COLORADO

FIGURE #1

SCALE: 1" = 60'
DATE: 02-11-14
DRAWN BY: M.D.
REVISED: 02-28-14
REVISED: 11-16-15 M.O.E.
REVISED: 11-19-15 M.O.E.
REVISED: 11-23-15 M.F.D.
REVISED: 12-15-15 C.D.L.
REVISED: 12-22-15 S.S.



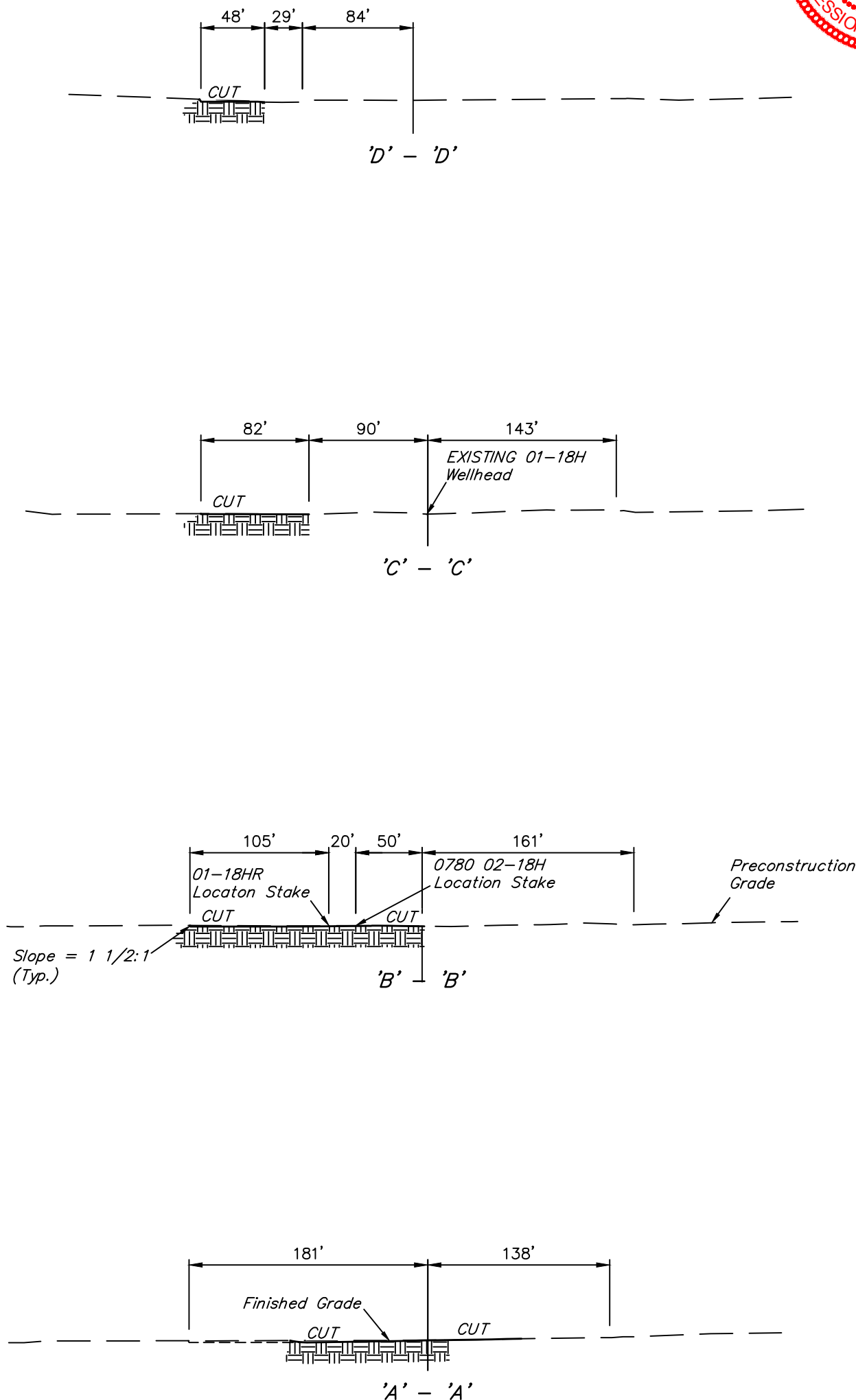
Elev. Ungraded Ground At The 01-18HR Loc. Stake = 8153.3'
FINISHED GRADE ELEV. AT THE 01-18HR LOC. STAKE = 8153.1'

UINTAH ENGINEERING & LAND SURVEYING
85 So. 200 East * Vernal, Utah 84078 * (435) 789-1017

SandRidge Exploration & Production
CONSTRUCTION LAYOUT CROSS SECTIONS FOR
HEBRON 01-18HR & 0780 02-18H ON EXISTING
HEBRON 01-18H & 05-18H WELL PAD
NW 1/4 NE 1/4, SECTION 18, T7N, R80W, 6th P.M.
JACKSON COUNTY, COLORADO

FIGURE #2

1" = 40'
X-Section
Scale
1" = 100'
DATE: 02-11-14
DRAWN BY: M.D.
REVISED: 02-28-14
REVISED: 11-23-15 M.F.D.
REVISED: 12-15-15 C.D.L.
REVISED: 12-22-15 S.S.



NOTE:
Topsoil should not be
Stripped Below Finished
Grade on Substructure Area.

* NOTE:
FILL QUANTITY INCLUDES
5% FOR COMPACTION

APPROXIMATE ACREAGE
EXISTING WELL SITE (FENCED AREA) DISTURBANCE = ± 3.790 ACRES
NEW WELL SITE (FENCED AREA) DISTURBANCE = ± 0.199 ACRES
TOTAL = ± 3.989 ACRES

APPROXIMATE YARDAGES

(6") Topsoil Stripping = 0 Cu. Yds.
Remaining Location = 340 Cu. Yds.
TOTAL CUT = 340 CU. YDS.
FILL = 0 CU. YDS.

EXCESS MATERIAL = 340 Cu. Yds.
Topsoil = 0 Cu. Yds.
EXCESS UNBALANCE = 340 Cu. Yds.
(After Interim Rehabilitation)

UINTAH ENGINEERING & LAND SURVEYING
85 So. 200 East * Vernal, Utah 84078 * (435) 789-1017

FIGURE #3

SCALE: 1" = 60'
DATE: 02-11-14
DRAWN BY: M.D.
REVISED: 02-28-14
REVISED: 11-23-15 M.F.D
REVISED: 12-15-15 C.D.L.
REVISED: 12-22-15 S.S.

