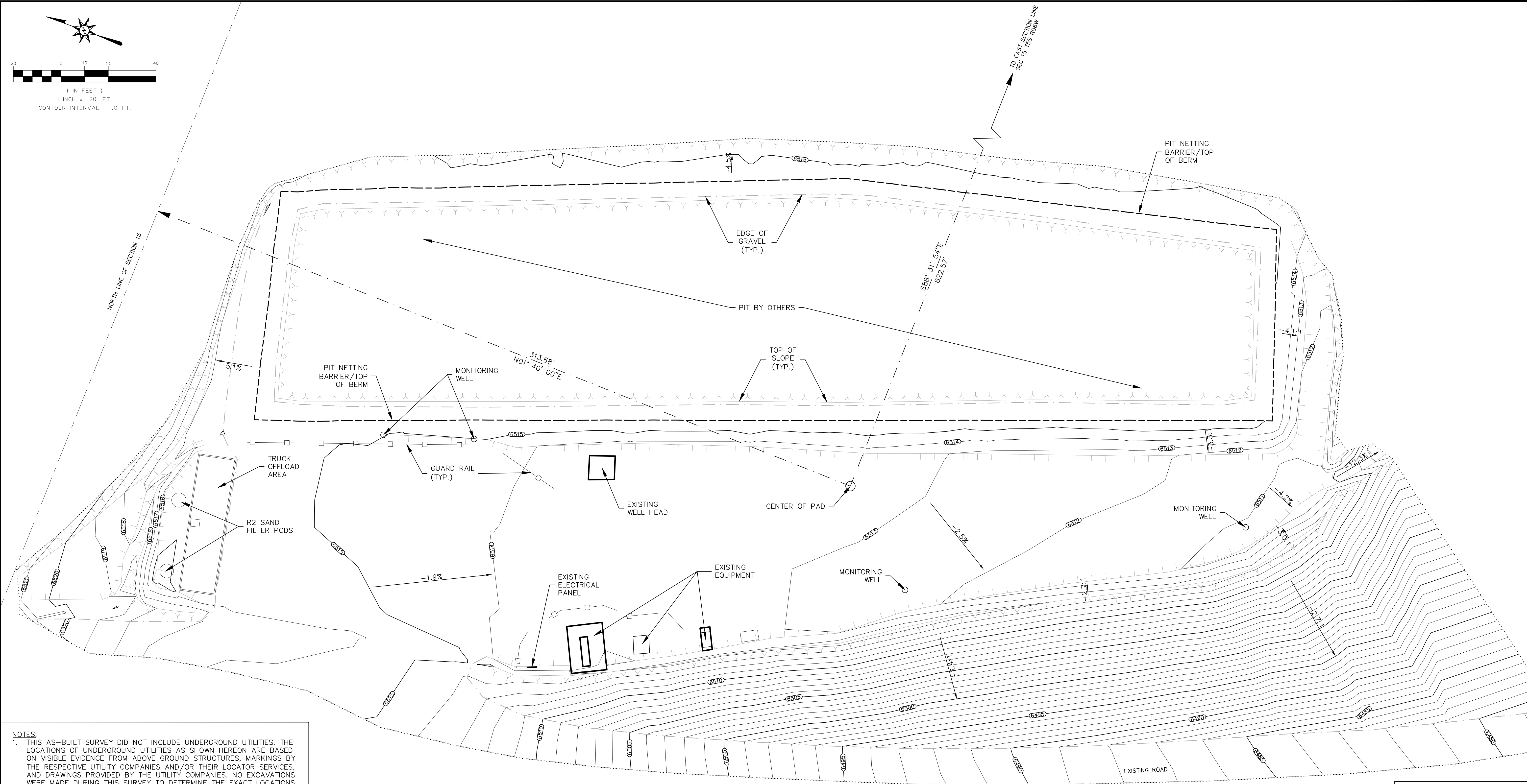
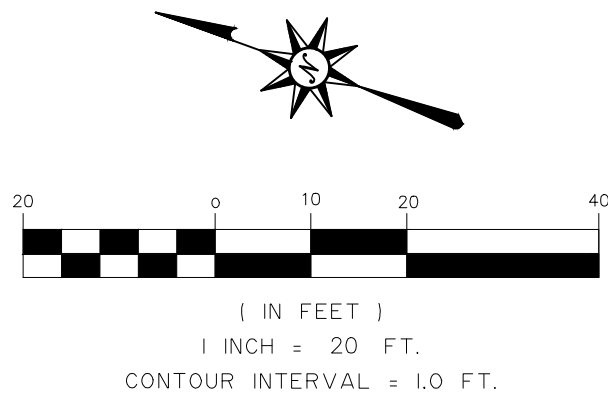




Date _____ Time _____

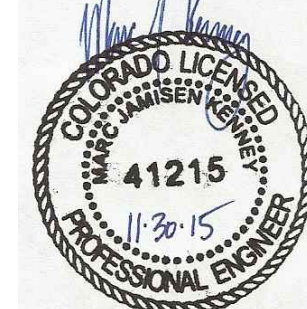


- NOTES:
1. THIS AS-BUILT SURVEY DID NOT INCLUDE UNDERGROUND UTILITIES. THE LOCATIONS OF UNDERGROUND UTILITIES AS SHOWN HEREON ARE BASED ON VISIBLE EVIDENCE FROM ABOVE GROUND STRUCTURES, MARKINGS BY THE RESPECTIVE UTILITY COMPANIES AND/OR THEIR LOCATOR SERVICES, AND DRAWINGS PROVIDED BY THE UTILITY COMPANIES. NO EXCAVATIONS WERE MADE DURING THIS SURVEY TO DETERMINE THE EXACT LOCATIONS AND DEPTHS OF THE UNDERGROUND UTILITIES AND STRUCTURES. ACTUAL LOCATION MAY VARY SLIGHTLY FROM THOSE SHOWN HEREON AND ADDITIONAL UNDERGROUND UTILITIES LIKELY EXIST. EXISTENCE AND LOCATIONS OF ALL UNDERGROUND UTILITIES AND STRUCTURES SHOULD BE VERIFIED PRIOR TO ANY DISTURBANCE ON THIS PROPERTY.
 2. AS BUILT SURVEY DATA PROVIDED BY RIVER CITY CONSULTANTS, INC.
 3. THE ORIGINAL DRAWING SIZE IS 22" x 34".




UNCC
UNIVERSITY OF NEBRASKA
CENTER OF EXCELLENCE
KNOW WHAT'S BELOW.
Call before you dig.

CALL 2 BUSINESS DAYS IN ADVANCE BEFORE YOU DIG, GRADE, OR EXCAVATE FOR THE MARKING OF UNDERGROUND MEMBER UTILITIES.

REFERENCE DRAWINGS		DWG. NO.	NO.	DATE	PROJECT DESCRIPTION	PROJ.	AFE	EPCM Co.	EPCM No.	APPD.	ISSUE STAGE	DATE	BY	CHKD.	APPD.	PERMIT STAMP	ENGINEER'S STAMP	
.	.	.	1	-	I REV. NUMBER	Prelim. (A)	-	.	.	.		PERMIT STAMP AND PROFESSIONAL STAMP AFFIXED ABOVE SHALL APPLY ONLY TO REV(s)
.	.	.	.	-		Bid (B)	-	.	.	.		
.	.	.	.	-		Constr. (C)	-	.	.	.		
.	.	.	.	-		As-built (D)	2015-11-23	DSP	mjk	.		
.	.	.	.	-	-	.	.	.		
.	.	.	.	-	-	.	.	.		
.	.	.	.	-	-	.	.	.		
.	.	.	.	-	-	.	.	.		
.	.	.	.	-	-	.	.	.		
.	.	.	.	-	-	.	.	.		
CAUTION : READ BEFORE EXCAVATION ALL EXCAVATIONS MUST BE CARRIED OUT AS PER "ENCANA'S GROUND DISTURBANCE PRACTICE"			.	-	-	.	.	.			

CAUTION : READ BEFORE EXCAVATION
ALL EXCAVATIONS MUST BE CARRIED OUT AS PER
"ENCANA'S GROUND DISTURBANCE PRACTICE"



MAIN FAC. A15 596 Pad

MAIN LSP. NE 1/4 Sec15 T5S R96W

FAC. TYPE WATER STORAGE FACILITY

SITE LSP. NE 1/4 Sec15 T5S R96W

SCALE 1" = 20' (D Size)

SHEET No. 1086-101

EPCM Co. RIVER CITY CONSULTANTS, INC.

TITLE A15 596 PAD
As-Built Topography

AREA NORTH PARACHUTE

CLASS -

FILE NO. 1

T:\PROJECTS\A15 596 Pad\A15 596 Pad.dwg 11/30/15

Drawings Must Comply with EnCana Drafting Standards (ECA-A-1)

FILE: