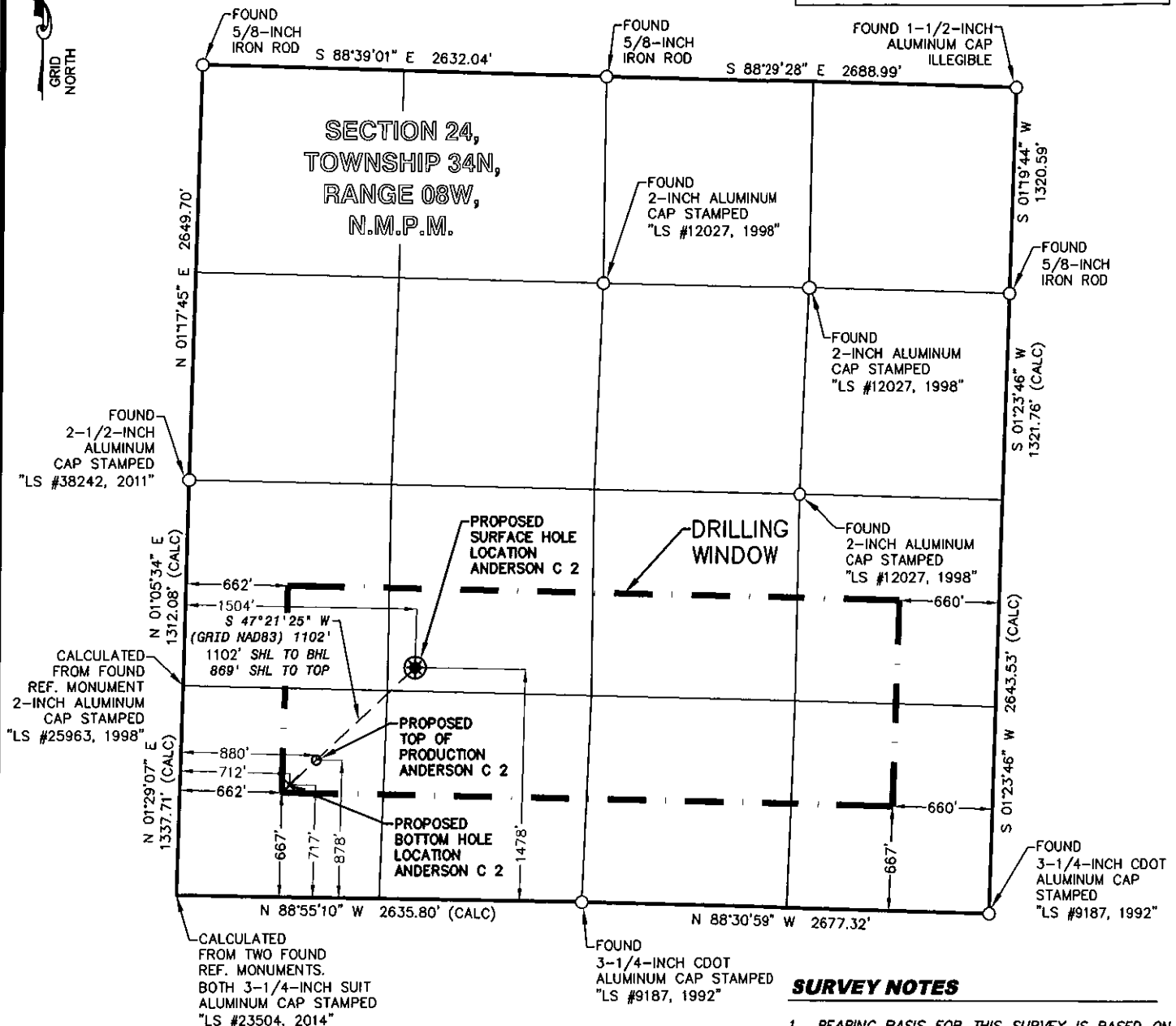


# LEGEND

FOUND MONUMENT ○  
 PROPOSED SURFACE HOLE LOCATION ●  
 PROPOSED BOTTOM HOLE LOCATION ×



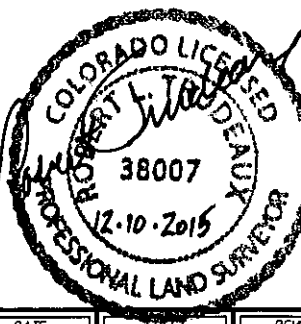
## SURVEY NOTES

1. BEARING BASIS FOR THIS SURVEY IS BASED ON THE NORTH AMERICAN DATUM OF 1983, COLORADO STATE PLANE COORDINATE SYSTEM, COLORADO SOUTH, ZONE 0503.
2. ELEVATION BASIS FOR THIS SURVEY IS BASED ON THE NORTH AMERICAN VERTICAL DATUM OF 1988 (GEOID12A).
3. SURVEYED IN THE FIELD ON 08/20/2015.
4. BEARINGS AND DISTANCE SHOWN ARE MEASURED IN THE FIELD UNLESS OTHERWISE NOTED.
5. ALL MEASURED DISTANCES SHOWN ARE GRID USING A COMBINED SCALE FACTOR 0.99969361.
6. GPS INSTRUMENT OPERATOR: BRIAN BONIFACE
7. GPS PDOP VALUE: 2.2

ANDERSON C 2	CSZ NAD'83	NAD'83	TIES	ELEVATION
PROPOSED SURFACE HOLE LOCATION (SHL)	N (Y) = 1,191,885.01' E (X) = 2,367,108.87'	LAT. = 37.17343587°N LON. = 107.67230895°W	FSL = 1478' FWL = 1504'	EXISTING GROUND 6708.81'
PROPOSED TOP OF PRODUCTION (TOP)	N (Y) = 1,191,296.62' E (X) = 2,366,469.96'	LAT. = 37.17177953°N LON. = 107.67445412°W	FSL = 878' FWL = 880'	PROPOSED GRADE 6707.58'
PROPOSED BOTTOM HOLE LOCATION (BHL)	N (Y) = 1,191,138.55' E (X) = 2,366,298.32'	LAT. = 37.17133456°N LON. = 107.67503040°W	FSL = 717' FWL = 712'	

## SURVEYOR'S CERTIFICATE

I, ROBERT L. TRUDEAUX, A PROFESSIONAL LAND SURVEYOR IN THE STATE OF COLORADO, DO HEREBY CERTIFY THAT THIS PLAT WAS PREPARED FROM AN ACTUAL SURVEY PERFORMED BY ME OR UNDER MY DIRECT RESPONSIBILITY, SUPERVISION AND CHECKING, AND IS TRUE AND CORRECT TO THE BEST OF MY KNOWLEDGE AND BELIEF BASED ON THE STANDARDS OF CARE OF PROFESSIONAL LAND SURVEYORS PRACTICING IN THE STATE OF COLORADO. THIS DOES NOT REPRESENT A LAND SURVEY PLAT, IMPROVEMENT SURVEY PLAT, OR MONUMENTED LAND SURVEY AS DEFINED BY COLORADO REVISED STATUTES 38-51-102 AND CANNOT BE RELIED UPON TO DETERMINE OWNERSHIP. THIS SURVEY IS NOT A GUARANTEE OR WARRANTY, EITHER EXPRESSED OR IMPLIED.



DRAWN BY	CHECKED BY	SCALE	DATE	SHEET	REVISION
CFW/RLM	RLT	1"=1000'	12/10/2015	1 OF 1	

	BP AMERICA PRODUCTION COMPANY US LOWER 48 ONSHORE
	WELL LOCATION PLAT
ANDERSON C 2 PART OF SECTION 24, TOWNSHIP 34N, RANGE 08W, N.M.P.M. LA PLATA COUNTY, COLORADO	