

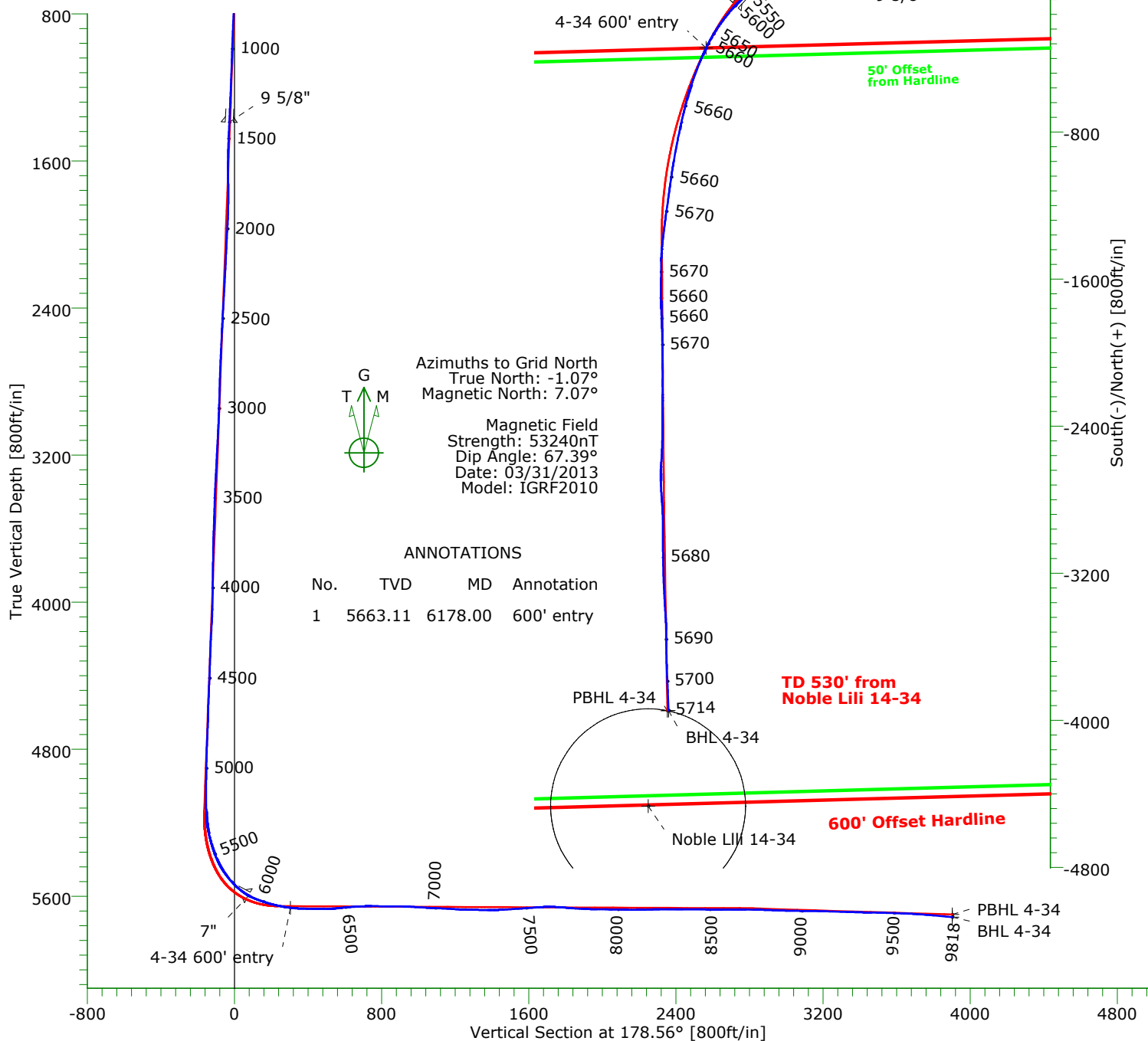


## CASING DETAILS

No.	TVD	MD	Name	Size
1	1389.42	1408.00	9 5/8"	9.625
2	5597.56	5887.00	7"	7.000

## LEGEND

— 4-34-9-58, Original Hole, Plan #5  
— Original Hole



## TARGET DETAILS

Name	TVD	+N/-S	+E/-W	Northing	Easting	Latitude	Longitude	Shape
Noble Lili 14-34	-100.00	-4467.00	-1787.99	1502826.12	3456979.18	40°42'07.140N	103°51'06.445W	Circle (Radius: 530)
Surface 4-34	0.00	0.00	0.00	1507293.12	3458767.17	40°42'50.942N	103°50'42.152W	Point
4-34 600' entry	5663.11	-342.41	-1472.39	1506950.71	3457294.78	40°42'47.831N	103°51'01.352W	Point
PBHL 4-34	5699.92	-3947.51	-1683.02	1503345.61	3457084.15	40°42'12.253N	103°51'04.957W	Point
BHL 4-34	5713.82	-3946.27	-1676.09	1503346.85	3457091.08	40°42'12.264N	103°51'04.867W	Point

Wellpath: (4-34-9-58/Original Hole)

Date: 04/10/2013

***PRECISION DIRECTIONAL SERVICES, INC.***

**713.435.6250**

# Precision Directional Services, Inc.

## Survey Report

<b>Company:</b> CARRIZO OIL & GAS, INC.		<b>Date:</b> 04/10/2013	<b>Time:</b> 09:53:56	<b>Page:</b> 1
<b>Field:</b> Niobrara CONZ'83		<b>Co-ordinate(NE) Reference:</b> Well: 4-34-9-58, Grid North		
<b>Site:</b> Bringelson Ranch 34-41-9-58 Pad		<b>Vertical (TVD) Reference:</b> 4736'GL+17'KB 4753.0		
<b>Well:</b> 4-34-9-58		<b>Section (VS) Reference:</b> Well (0.00N,0.00E,178.56Azi)		
<b>Wellpath:</b> Original Hole		<b>Survey Calculation Method:</b> Minimum Curvature	<b>Db:</b> Adapti	

<b>Field:</b> Niobrara CONZ'83	
<b>Map System:</b> US State Plane Coordinate System 1983	<b>Map Zone:</b> Colorado, Northern Zone
<b>Geo Datum:</b> GRS 1980	<b>Coordinate System:</b> Well Centre
<b>Sys Datum:</b> Mean Sea Level	<b>Geomagnetic Model:</b> IGRF2010

<b>Site:</b> Bringelson Ranch 34-41-9-58 Pad	
<b>Site Position:</b>	<b>Northing:</b> 1507293.93 ft
<b>From:</b> Map	<b>Easting:</b> 3458811.93 ft
<b>Position Uncertainty:</b> 0.00 ft	<b>Latitude:</b> 40 42 50.942 N
<b>Ground Level:</b> 4736.00 ft	<b>Longitude:</b> 103 50 41.571 W
	<b>North Reference:</b> Grid
	<b>Grid Convergence:</b> 1.07 deg

<b>Well:</b> 4-34-9-58		<b>Slot Name:</b>	
Centered on 1-23-9-58			
<b>Well Position:</b> +N/-S -0.81 ft	<b>Northing:</b> 1507293.12 ft	<b>Latitude:</b> 40 42 50.942 N	
+E/-W -44.76 ft	<b>Easting :</b> 3458767.17 ft	<b>Longitude:</b> 103 50 42.152 W	
<b>Position Uncertainty:</b> 0.00 ft			

<b>Wellpath:</b> Original Hole		<b>Drilled From:</b> Surface
<b>Current Datum:</b> 4736'GL+17'KB	<b>Height</b> 4753.00 ft	<b>Tie-on Depth:</b> 0.00 ft
<b>Magnetic Data:</b> 03/31/2013		<b>Above System Datum:</b> Mean Sea Level
<b>Field Strength:</b> 53240 nT		<b>Declination:</b> 8.14 deg
<b>Vertical Section:</b> Depth From (TVD)	+N/-S	<b>Mag Dip Angle:</b> 67.39 deg
ft	ft	<b>Direction</b>
		deg
0.00	0.00	178.56

<b>Survey Program for Definitive Wellpath</b>			
<b>Date:</b> 04/10/2013	<b>Validated:</b> No	<b>Version:</b> 1	
<b>Actual From</b>	<b>To</b>	<b>Survey</b>	<b>Toolcode</b>
ft	ft		<b>Tool Name</b>
94.00	9720.00	Survey #1 (94.00-9720.00)	MWD
9818.00	9818.00	Survey #2 (9818.00-9818.00)	Project
			Std MWD Projection

<b>Survey</b>										
MD	Incl	Azim	TVD	+N/-S	+E/-W	VS	DLS	Build	Turn	Tool/Comment
ft	deg	deg	ft	ft	ft	ft	deg/100ft	deg/100ft	deg/100ft	
0.00	0.00	0.00	0.00	0.00	0.00	0.00	0.00	0.00	0.00	TIE LINE
94.00	0.20	214.10	94.00	-0.14	-0.09	0.13	0.21	0.21	0.00	MWD
173.00	1.90	244.70	172.98	-0.81	-1.35	0.78	2.19	2.15	38.73	MWD
235.00	2.30	248.40	234.94	-1.71	-3.44	1.62	0.68	0.65	5.97	MWD
328.00	2.60	246.30	327.86	-3.24	-7.11	3.06	0.34	0.32	-2.26	MWD
424.00	4.00	260.70	423.70	-4.66	-12.40	4.35	1.68	1.46	15.00	MWD
518.00	5.80	270.40	517.35	-5.15	-20.39	4.64	2.10	1.91	10.32	MWD
611.00	8.30	279.90	609.64	-3.97	-31.70	3.17	2.96	2.69	10.22	MWD
705.00	10.60	280.90	702.36	-1.17	-46.88	-0.01	2.45	2.45	1.06	MWD
798.00	12.10	281.10	793.54	2.33	-64.84	-3.96	1.61	1.61	0.22	MWD
892.00	12.00	279.70	885.47	5.87	-84.14	-7.98	0.33	-0.11	-1.49	MWD
985.00	11.60	276.70	976.50	8.59	-102.96	-11.18	0.79	-0.43	-3.23	MWD
1079.00	12.80	277.60	1068.38	11.07	-122.67	-14.15	1.29	1.28	0.96	MWD
1173.00	13.10	277.60	1159.99	13.86	-143.55	-17.46	0.32	0.32	0.00	MWD
1266.00	13.20	279.70	1250.55	17.04	-164.46	-21.17	0.52	0.11	2.26	MWD
1360.00	11.50	280.40	1342.37	20.54	-184.26	-25.16	1.82	-1.81	0.74	MWD
1446.00	11.20	282.50	1426.69	23.90	-200.85	-28.94	0.59	-0.35	2.44	MWD
1540.00	12.00	278.30	1518.77	27.28	-219.43	-32.79	1.24	0.85	-4.47	MWD
1634.00	11.10	270.40	1610.87	28.76	-238.15	-34.73	1.93	-0.96	-8.40	MWD
1727.00	10.10	260.00	1702.29	27.40	-255.13	-33.81	2.32	-1.08	-11.18	MWD
1813.00	10.40	269.50	1786.93	26.03	-270.32	-32.81	1.99	0.35	11.05	MWD
1898.00	12.10	275.70	1870.29	26.84	-286.86	-34.04	2.45	2.00	7.29	MWD

# Precision Directional Services, Inc.

## Survey Report

**Company:** CARRIZO OIL & GAS, INC.  
**Field:** Niobrara CONZ'83  
**Site:** Bringelson Ranch 34-41-9-58 Pad  
**Well:** 4-34-9-58  
**Wellpath:** Original Hole

**Date:** 04/10/2013 **Time:** 09:53:56 **Page:** 2  
**Co-ordinate(NE) Reference:** Well: 4-34-9-58, Grid North  
**Vertical (TVD) Reference:** 4736'GL+17"KB 4753.0  
**Section (VS) Reference:** Well (0.00N,0.00E,178.56Azi)  
**Survey Calculation Method:** Minimum Curvature **Db:** Adapti

### Survey

MD ft	Incl deg	Azim deg	TVD ft	+N/-S ft	+E/-W ft	VS ft	DLS deg/100ft	Build deg/100ft	Turn deg/100ft	Tool/Comment
1983.00	12.40	283.60	1953.36	29.87	-304.60	-37.52	2.00	0.35	9.29	MWD
2068.00	12.60	281.60	2036.35	33.88	-322.55	-41.98	0.56	0.24	-2.35	MWD
2154.00	11.70	279.90	2120.42	37.27	-340.33	-45.81	1.13	-1.05	-1.98	MWD
2239.00	12.50	283.70	2203.54	40.93	-357.76	-49.91	1.33	0.94	4.47	MWD
2324.00	12.60	282.70	2286.50	45.15	-375.74	-54.57	0.28	0.12	-1.18	MWD
2409.00	13.20	282.00	2369.36	49.20	-394.27	-59.10	0.73	0.71	-0.82	MWD
2495.00	14.00	281.60	2452.95	53.34	-414.07	-63.73	0.94	0.93	-0.47	MWD
2580.00	11.60	281.80	2535.83	57.15	-432.51	-68.00	2.82	-2.82	0.24	MWD
2665.00	11.30	282.00	2619.14	60.63	-449.02	-71.90	0.36	-0.35	0.24	MWD
2751.00	12.80	279.20	2703.24	63.91	-466.67	-75.61	1.87	1.74	-3.26	MWD
2836.00	12.00	277.20	2786.26	66.52	-484.73	-78.68	1.07	-0.94	-2.35	MWD
2921.00	11.10	275.70	2869.54	68.44	-501.64	-81.02	1.12	-1.06	-1.76	MWD
3006.00	11.00	278.80	2952.96	70.49	-517.79	-83.48	0.71	-0.12	3.65	MWD
3091.00	12.00	281.30	3036.25	73.46	-534.47	-86.87	1.31	1.18	2.94	MWD
3177.00	12.80	281.80	3120.25	77.16	-552.56	-91.03	0.94	0.93	0.58	MWD
3262.00	13.50	279.90	3203.02	80.80	-571.56	-95.13	0.97	0.82	-2.24	MWD
3348.00	14.50	281.10	3286.46	84.59	-592.01	-99.45	1.21	1.16	1.40	MWD
3433.00	13.60	279.50	3368.92	88.29	-612.31	-103.65	1.15	-1.06	-1.88	MWD
3518.00	12.80	276.50	3451.67	91.01	-631.52	-106.85	1.24	-0.94	-3.53	MWD
3604.00	13.30	275.70	3535.45	93.07	-650.83	-109.40	0.62	0.58	-0.93	MWD
3689.00	11.90	279.70	3618.40	95.52	-669.20	-112.30	1.94	-1.65	4.71	MWD
3774.00	10.60	274.80	3701.77	97.65	-685.63	-114.85	1.90	-1.53	-5.76	MWD
3860.00	10.10	270.90	3786.37	98.43	-701.05	-116.01	1.00	-0.58	-4.53	MWD
3945.00	11.40	273.40	3869.88	99.04	-716.89	-117.03	1.62	1.53	2.94	MWD
4030.00	11.70	270.70	3953.16	99.65	-733.89	-118.06	0.73	0.35	-3.18	MWD
4116.00	11.70	276.90	4037.38	100.80	-751.27	-119.65	1.46	0.00	7.21	MWD
4201.00	11.90	283.90	4120.58	103.94	-768.33	-123.22	1.70	0.24	8.24	MWD
4286.00	11.60	282.50	4203.80	107.90	-785.18	-127.59	0.49	-0.35	-1.65	MWD
4372.00	11.20	279.90	4288.11	111.20	-801.85	-131.32	0.76	-0.47	-3.02	MWD
4457.00	10.60	277.60	4371.57	113.66	-817.73	-134.17	0.87	-0.71	-2.71	MWD
4543.00	10.70	282.50	4456.09	116.43	-833.37	-137.34	1.06	0.12	5.70	MWD
4628.00	9.70	280.40	4539.75	119.43	-848.12	-140.71	1.25	-1.18	-2.47	MWD
4713.00	10.60	276.00	4623.42	121.54	-862.94	-143.19	1.40	1.06	-5.18	MWD
4799.00	12.00	281.10	4707.75	124.09	-879.58	-146.16	2.00	1.63	5.93	MWD
4884.00	11.30	279.00	4791.00	127.09	-896.47	-149.58	0.96	-0.82	-2.47	MWD
4969.00	12.20	274.40	4874.22	129.09	-913.65	-152.01	1.53	1.06	-5.41	MWD
5055.00	12.80	270.60	4958.18	129.88	-932.24	-153.27	1.18	0.70	-4.42	MWD
5140.00	11.30	268.80	5041.31	129.81	-949.98	-153.64	1.82	-1.76	-2.12	MWD
5196.00	10.00	267.90	5096.34	129.51	-960.33	-153.61	2.34	-2.32	-1.61	MWD
5239.00	12.00	262.70	5138.55	128.81	-968.49	-153.11	5.19	4.65	-12.09	MWD
5282.00	16.90	254.60	5180.18	126.58	-978.96	-151.14	12.30	11.40	-18.84	MWD
5324.00	23.00	246.50	5219.65	121.68	-992.39	-146.58	15.91	14.52	-19.29	MWD
5367.00	27.40	243.80	5258.55	113.96	-1008.98	-139.28	10.57	10.23	-6.28	MWD
5410.00	30.20	241.70	5296.23	104.46	-1027.38	-130.25	6.92	6.51	-4.88	MWD
5452.00	33.40	240.50	5331.92	93.76	-1046.75	-120.03	7.77	7.62	-2.86	MWD
5495.00	37.10	238.70	5367.03	81.19	-1068.14	-108.00	8.94	8.60	-4.19	MWD
5538.00	40.00	237.30	5400.66	66.98	-1090.85	-94.37	7.04	6.74	-3.26	MWD
5580.00	44.70	235.90	5431.69	51.40	-1114.46	-79.39	11.41	11.19	-3.33	MWD
5623.00	49.90	234.90	5460.84	33.45	-1140.46	-62.10	12.21	12.09	-2.33	MWD
5666.00	53.20	233.50	5487.57	13.75	-1167.76	-43.09	8.09	7.67	-3.26	MWD
5708.00	55.20	231.50	5512.14	-6.99	-1194.77	-23.03	6.13	4.76	-4.76	MWD
5751.00	58.50	231.50	5535.65	-29.40	-1222.95	-1.34	7.67	7.67	0.00	MWD
5794.00	61.10	229.30	5557.28	-53.09	-1251.57	21.62	7.49	6.05	-5.12	MWD

# Precision Directional Services, Inc.

## Survey Report

**Company:** CARRIZO OIL & GAS, INC.  
**Field:** Niobrara CONZ'83  
**Site:** Bringelson Ranch 34-41-9-58 Pad  
**Well:** 4-34-9-58  
**Wellpath:** Original Hole

**Date:** 04/10/2013 **Time:** 09:53:56 **Page:** 3  
**Co-ordinate(NE) Reference:** Well: 4-34-9-58, Grid North  
**Vertical (TVD) Reference:** 4736'GL+17"KB 4753.0  
**Section (VS) Reference:** Well (0.00N,0.00E,178.56Azi)  
**Survey Calculation Method:** Minimum Curvature **Db:** Adapti

### Survey

MD ft	Incl deg	Azim deg	TVD ft	+N/-S ft	+E/-W ft	VS ft	DLS deg/100ft	Build deg/100ft	Turn deg/100ft	Tool/Comment
5836.00	63.50	227.50	5576.81	-77.78	-1279.37	45.61	6.86	5.71	-4.29	MWD
5860.00	65.50	226.10	5587.14	-92.61	-1295.16	60.04	9.86	8.33	-5.83	MWD
5902.00	71.10	222.10	5602.67	-120.64	-1322.28	87.37	16.00	13.33	-9.52	MWD
5948.00	73.80	220.10	5616.54	-153.69	-1351.10	119.68	7.19	5.87	-4.35	MWD
5994.00	74.90	217.10	5628.95	-188.30	-1378.73	153.59	6.72	2.39	-6.52	MWD
6042.00	77.40	214.00	5640.44	-226.21	-1405.81	190.81	8.15	5.21	-6.46	MWD
6088.00	79.30	211.20	5649.73	-264.16	-1430.08	228.14	7.25	4.13	-6.09	MWD
6136.00	81.60	208.00	5657.70	-305.32	-1453.45	268.69	8.13	4.79	-6.67	MWD
6178.00	83.60	206.10	5663.11	-342.41	-1472.39	305.30	6.54	4.76	-4.52	600' entry
6221.00	87.10	203.40	5666.59	-381.32	-1490.33	343.75	10.27	8.14	-6.28	MWD
6264.00	89.20	202.00	5667.98	-420.96	-1506.91	382.96	5.87	4.88	-3.26	MWD
6306.00	90.00	201.50	5668.27	-459.97	-1522.47	421.57	2.25	1.90	-1.19	MWD
6349.00	89.30	199.90	5668.54	-500.20	-1537.67	461.40	4.06	-1.63	-3.72	MWD
6392.00	90.10	198.80	5668.76	-540.76	-1551.92	501.59	3.16	1.86	-2.56	MWD
6434.00	93.60	196.70	5667.41	-580.74	-1564.71	541.23	9.72	8.33	-5.00	MWD
6477.00	96.60	194.80	5663.58	-621.95	-1576.34	582.14	8.25	6.98	-4.42	MWD
6519.00	94.40	193.70	5659.56	-662.47	-1586.63	622.39	5.85	-5.24	-2.62	MWD
6562.00	92.60	193.40	5656.93	-704.19	-1596.68	663.84	4.24	-4.19	-0.70	MWD
6605.00	92.90	192.70	5654.87	-746.03	-1606.38	705.43	1.77	0.70	-1.63	MWD
6647.00	89.30	192.00	5654.06	-787.05	-1615.36	746.20	8.73	-8.57	-1.67	MWD
6690.00	89.00	191.50	5654.70	-829.14	-1624.12	788.06	1.36	-0.70	-1.16	MWD
6733.00	89.30	190.90	5655.34	-871.32	-1632.47	830.02	1.56	0.70	-1.40	MWD
6775.00	89.80	190.10	5655.67	-912.61	-1640.12	871.11	2.25	1.19	-1.90	MWD
6818.00	89.40	190.10	5655.97	-954.94	-1647.66	913.24	0.93	-0.93	0.00	MWD
6861.00	87.10	189.20	5657.28	-997.31	-1654.87	955.41	5.74	-5.35	-2.09	MWD
6903.00	86.50	188.10	5659.63	-1038.77	-1661.17	996.70	2.98	-1.43	-2.62	MWD
6946.00	86.10	187.90	5662.40	-1081.26	-1667.15	1039.02	1.04	-0.93	-0.47	MWD
6989.00	87.80	187.60	5664.69	-1123.81	-1672.94	1081.41	4.01	3.95	-0.70	MWD
7031.00	87.30	188.30	5666.49	-1165.36	-1678.74	1122.81	2.05	-1.19	1.67	MWD
7074.00	87.00	187.90	5668.62	-1207.88	-1684.79	1165.16	1.16	-0.70	-0.93	MWD
7117.00	86.30	187.90	5671.14	-1250.40	-1690.69	1207.52	1.63	-1.63	0.00	MWD
7159.00	88.30	187.60	5673.12	-1291.97	-1696.35	1248.93	4.82	4.76	-0.71	MWD
7202.00	89.30	186.90	5674.02	-1334.62	-1701.77	1291.43	2.84	2.33	-1.63	MWD
7245.00	88.40	186.50	5674.88	-1377.31	-1706.79	1333.99	2.29	-2.09	-0.93	MWD
7287.00	89.30	186.00	5675.72	-1419.05	-1711.36	1375.60	2.45	2.14	-1.19	MWD
7330.00	91.70	183.60	5675.35	-1461.90	-1714.96	1418.34	7.89	5.58	-5.58	MWD
7373.00	93.30	180.60	5673.47	-1504.82	-1716.53	1461.21	7.90	3.72	-6.98	MWD
7415.00	93.60	180.40	5670.94	-1546.74	-1716.90	1503.11	0.86	0.71	-0.48	MWD
7458.00	94.00	180.70	5668.09	-1589.65	-1717.31	1545.99	1.16	0.93	0.70	MWD
7501.00	94.20	179.70	5665.02	-1632.53	-1717.46	1588.86	2.37	0.47	-2.33	MWD
7543.00	94.30	180.40	5661.91	-1674.42	-1717.50	1630.73	1.68	0.24	1.67	MWD
7586.00	93.30	179.00	5659.06	-1717.32	-1717.27	1673.62	4.00	-2.33	-3.26	MWD
7629.00	89.60	177.90	5657.97	-1760.28	-1716.11	1716.60	8.98	-8.60	-2.56	MWD
7672.00	86.80	177.60	5659.32	-1803.23	-1714.42	1759.57	6.55	-6.51	-0.70	MWD
7714.00	84.40	177.80	5662.54	-1845.06	-1712.74	1801.44	5.73	-5.71	0.48	MWD
7757.00	86.30	179.20	5666.03	-1887.91	-1711.62	1844.30	5.48	4.42	3.26	MWD
7800.00	86.60	179.00	5668.69	-1930.82	-1710.95	1887.21	0.84	0.70	-0.47	MWD
7842.00	88.50	179.00	5670.48	-1972.77	-1710.21	1929.17	4.52	4.52	0.00	MWD
7885.00	89.30	179.70	5671.31	-2015.76	-1709.73	1972.16	2.47	1.86	1.63	MWD
7928.00	89.40	179.90	5671.80	-2058.76	-1709.58	2015.14	0.52	0.23	0.47	MWD
7970.00	89.20	178.80	5672.31	-2100.75	-1709.10	2057.14	2.66	-0.48	-2.62	MWD
8013.00	89.10	179.20	5672.95	-2143.74	-1708.35	2100.13	0.96	-0.23	0.93	MWD
8056.00	89.20	181.40	5673.59	-2186.73	-1708.57	2143.10	5.12	0.23	5.12	MWD
8098.00	89.00	181.60	5674.25	-2228.71	-1709.67	2185.04	0.67	-0.48	0.48	MWD

# Precision Directional Services, Inc.

## Survey Report

**Company:** CARRIZO OIL & GAS, INC.  
**Field:** Niobrara CONZ'83  
**Site:** Bringelson Ranch 34-41-9-58 Pad  
**Well:** 4-34-9-58  
**Wellpath:** Original Hole

**Date:** 04/10/2013 **Time:** 09:53:56 **Page:** 4  
**Co-ordinate(NE) Reference:** Well: 4-34-9-58, Grid North  
**Vertical (TVD) Reference:** 4736'GL+17'KB 4753.0  
**Section (VS) Reference:** Well (0.00N,0.00E,178.56Azi)  
**Survey Calculation Method:** Minimum Curvature **Db:** Adapti

### Survey

MD ft	Incl deg	Azim deg	TVD ft	+N/-S ft	+E/-W ft	VS ft	DLS deg/100ft	Build deg/100ft	Turn deg/100ft	Tool/Comment
8141.00	92.20	180.40	5673.80	-2271.70	-1710.42	2228.00	7.95	7.44	-2.79	MWD
8184.00	92.40	179.50	5672.07	-2314.66	-1710.39	2270.95	2.14	0.47	-2.09	MWD
8226.00	89.60	180.00	5671.34	-2356.65	-1710.20	2312.93	6.77	-6.67	1.19	MWD
8269.00	90.20	180.70	5671.41	-2399.65	-1710.47	2355.91	2.14	1.40	1.63	MWD
8312.00	89.80	179.50	5671.41	-2442.65	-1710.54	2398.89	2.94	-0.93	-2.79	MWD
8354.00	90.00	181.30	5671.49	-2484.64	-1710.83	2440.87	4.31	0.48	4.29	MWD
8397.00	89.70	182.30	5671.60	-2527.62	-1712.19	2483.80	2.43	-0.70	2.33	MWD
8440.00	89.80	183.40	5671.79	-2570.57	-1714.32	2526.68	2.57	0.23	2.56	MWD
8482.00	89.40	184.80	5672.08	-2612.46	-1717.33	2568.48	3.47	-0.95	3.33	MWD
8525.00	90.00	181.30	5672.30	-2655.39	-1719.61	2611.34	8.26	1.40	-8.14	MWD
8568.00	89.40	176.90	5672.53	-2698.37	-1718.94	2654.32	10.33	-1.40	-10.23	MWD
8610.00	90.00	177.60	5672.75	-2740.32	-1716.92	2696.31	2.20	1.43	1.67	MWD
8653.00	89.80	176.20	5672.83	-2783.26	-1714.60	2739.29	3.29	-0.47	-3.26	MWD
8696.00	89.40	174.80	5673.13	-2826.13	-1711.22	2782.23	3.39	-0.93	-3.26	MWD
8738.00	89.40	177.60	5673.57	-2868.03	-1708.44	2824.19	6.67	0.00	6.67	MWD
8781.00	88.50	179.70	5674.35	-2911.00	-1707.43	2867.18	5.31	-2.09	4.88	MWD
8824.00	88.20	180.60	5675.59	-2953.99	-1707.54	2910.14	2.21	-0.70	2.09	MWD
8866.00	87.50	179.70	5677.17	-2995.96	-1707.65	2952.10	2.71	-1.67	-2.14	MWD
8909.00	88.50	179.50	5678.67	-3038.93	-1707.35	2995.06	2.37	2.33	-0.47	MWD
8952.00	89.10	178.80	5679.57	-3081.91	-1706.71	3038.05	2.14	1.40	-1.63	MWD
8995.00	89.50	179.30	5680.09	-3124.90	-1706.00	3081.05	1.49	0.93	1.16	MWD
9037.00	89.20	178.80	5680.57	-3166.90	-1705.30	3123.04	1.39	-0.71	-1.19	MWD
9080.00	89.00	178.30	5681.25	-3209.88	-1704.22	3166.04	1.25	-0.47	-1.16	MWD
9122.00	88.50	177.60	5682.16	-3251.84	-1702.71	3208.02	2.05	-1.19	-1.67	MWD
9165.00	88.40	177.40	5683.32	-3294.78	-1700.84	3251.00	0.52	-0.23	-0.47	MWD
9208.00	88.40	177.10	5684.53	-3337.72	-1698.78	3293.97	0.70	0.00	-0.70	MWD
9251.00	88.50	176.30	5685.69	-3380.63	-1696.30	3336.93	1.87	0.23	-1.86	MWD
9293.00	88.10	175.80	5686.93	-3422.51	-1693.41	3378.87	1.52	-0.95	-1.19	MWD
9336.00	88.70	177.40	5688.14	-3465.42	-1690.86	3421.83	3.97	1.40	3.72	MWD
9379.00	89.10	179.90	5688.96	-3508.39	-1689.85	3464.82	5.89	0.93	5.81	MWD
9421.00	88.70	179.50	5689.77	-3550.38	-1689.63	3506.80	1.35	-0.95	-0.95	MWD
9464.00	88.40	178.80	5690.86	-3593.37	-1688.99	3549.79	1.77	-0.70	-1.63	MWD
9507.00	88.10	178.80	5692.17	-3636.34	-1688.09	3592.77	0.70	-0.70	0.00	MWD
9549.00	87.80	178.50	5693.67	-3678.30	-1687.10	3634.74	1.01	-0.71	-0.71	MWD
9592.00	87.20	177.80	5695.55	-3721.23	-1685.72	3677.70	2.14	-1.40	-1.63	MWD
9635.00	85.70	177.80	5698.21	-3764.12	-1684.07	3720.61	3.49	-3.49	0.00	MWD
9677.00	85.40	177.60	5701.47	-3805.96	-1682.39	3762.48	0.86	-0.71	-0.48	MWD
9720.00	84.90	177.40	5705.10	-3848.76	-1680.52	3805.32	1.25	-1.16	-0.47	MWD
9818.00	84.90	177.40	5713.82	-3946.27	-1676.09	3902.91	0.00	0.00	0.00	PROJECTED to TD

### Annotation

MD ft	TVD ft	
6178.00	5663.11	600' entry