



PDSI

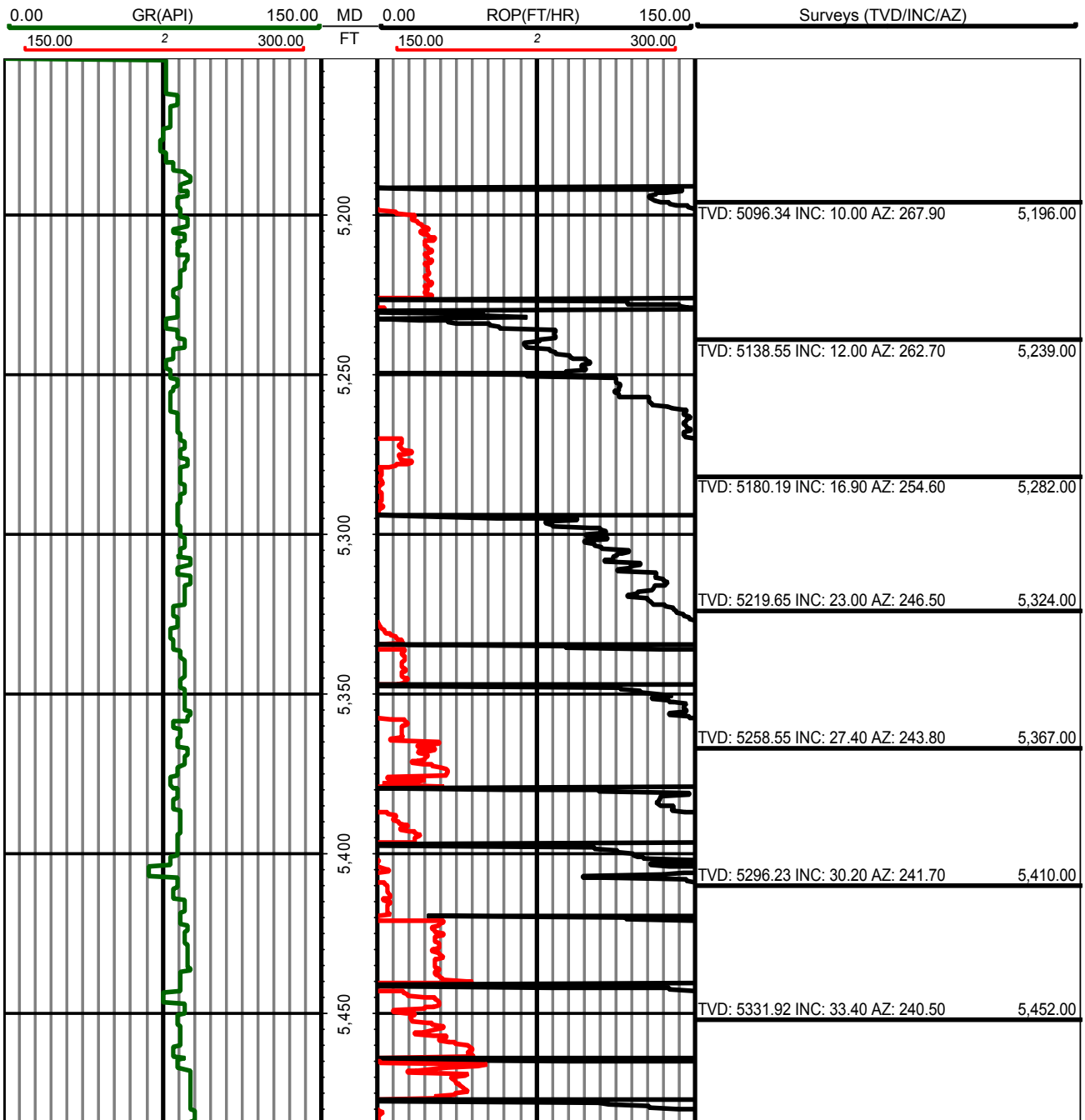
DL1635

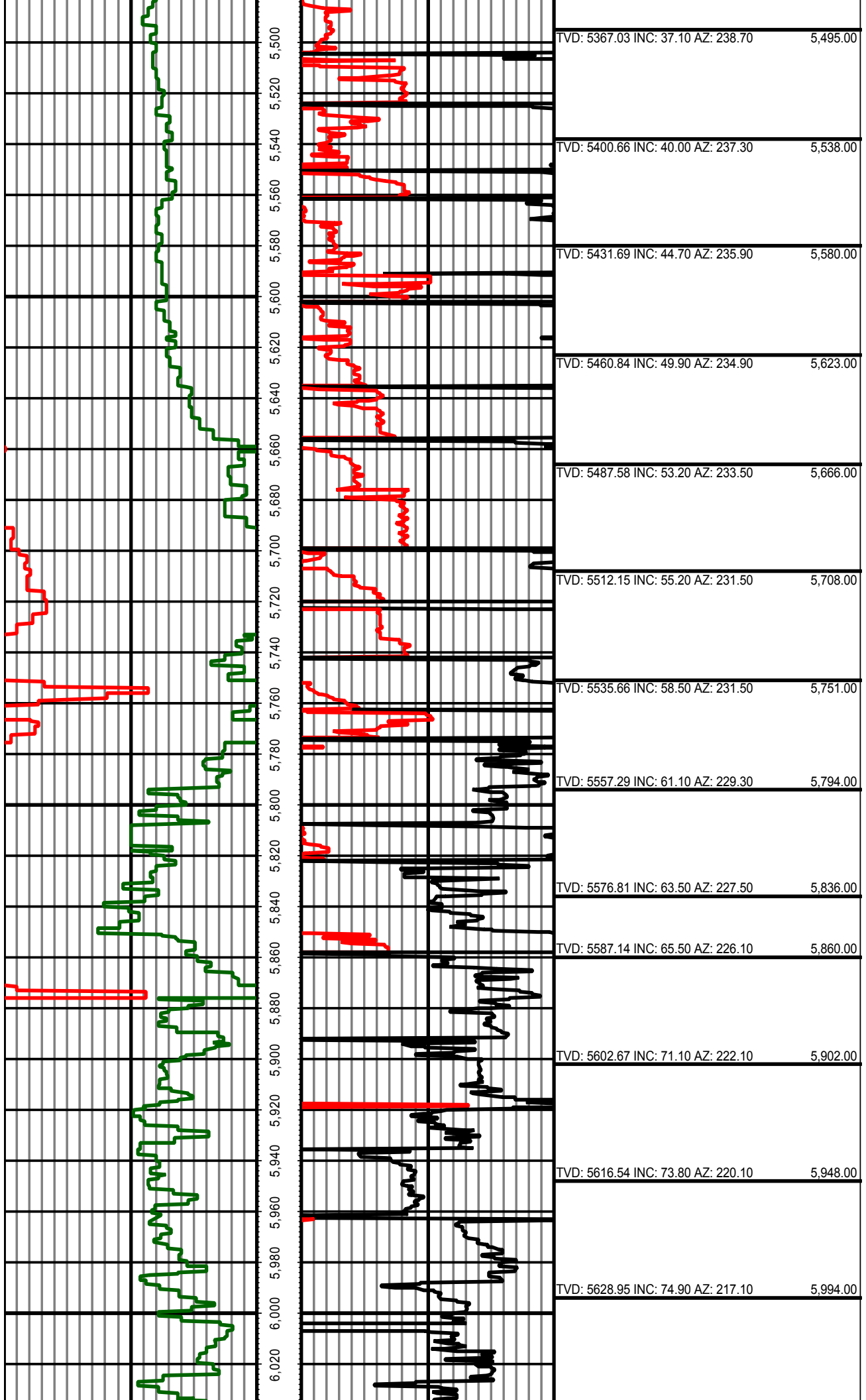
2":100' - MD

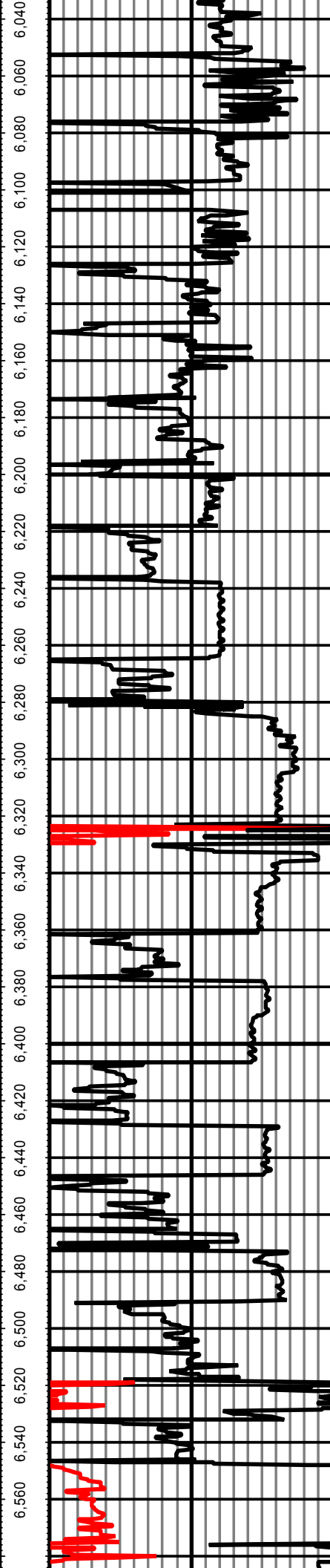
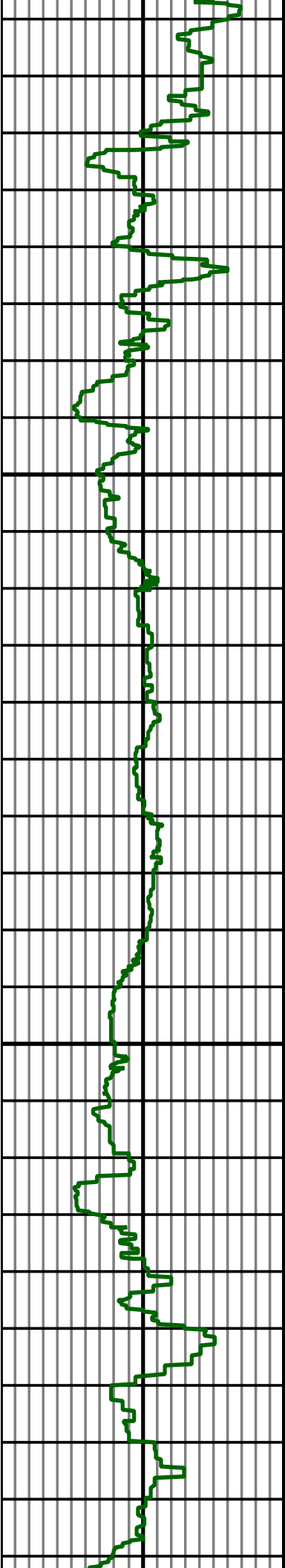
4/8/2013 9:23:33 AM

Oper. Company: Carrizo Oil & Gas, Inc.**Country:** USA**State / Province:** CO**County / Parish:** Weld**Started:** 04/03/2013 07:00 PM**API/UWI:** 05-123-36389-00**Field:** Niobrara CONZ'83**Well:** Bringelson Ranch 4-34-9-58**Rig:** Xtreme 17**Ended:** 04/08/2013 09:30 AM

All interpretations are opinions based on inferences from electrical or other measurements and we cannot and do not guarantee the accuracy or correctness of any interpretation, and we shall not except in the case of gross or willful negligence on our part, be liable or responsible for any loss, cost damages or expenses incurred or sustained by anyone resulting from an interpretation made by any of our officers, agents, or employees.







TVD: 5640.45 INC: 77.40 AZ: 214.00	6,042.00
TVD: 5649.74 INC: 79.30 AZ: 211.20	6,088.00
TVD: 5657.70 INC: 81.60 AZ: 208.00	6,136.00
TVD: 5663.11 INC: 83.60 AZ: 206.10	6,178.00
TVD: 5666.60 INC: 87.10 AZ: 203.40	6,221.00
TVD: 5667.98 INC: 89.20 AZ: 202.00	6,264.00
TVD: 5668.28 INC: 90.00 AZ: 201.50	6,306.00
TVD: 5668.54 INC: 89.30 AZ: 199.90	6,349.00
TVD: 5668.77 INC: 90.10 AZ: 198.80	6,392.00
TVD: 5667.41 INC: 93.60 AZ: 196.70	6,434.00
TVD: 5663.59 INC: 96.60 AZ: 194.80	6,477.00
TVD: 5659.56 INC: 94.40 AZ: 193.70	6,519.00
TVD: 5656.94 INC: 92.60 AZ: 193.40	6,562.00

