



CARRIZO

CARRIZO OIL & GAS, INC.

Field: Niobrara CONZ'83

Site: Bringelson Ranch 34-41-9-58 Pad

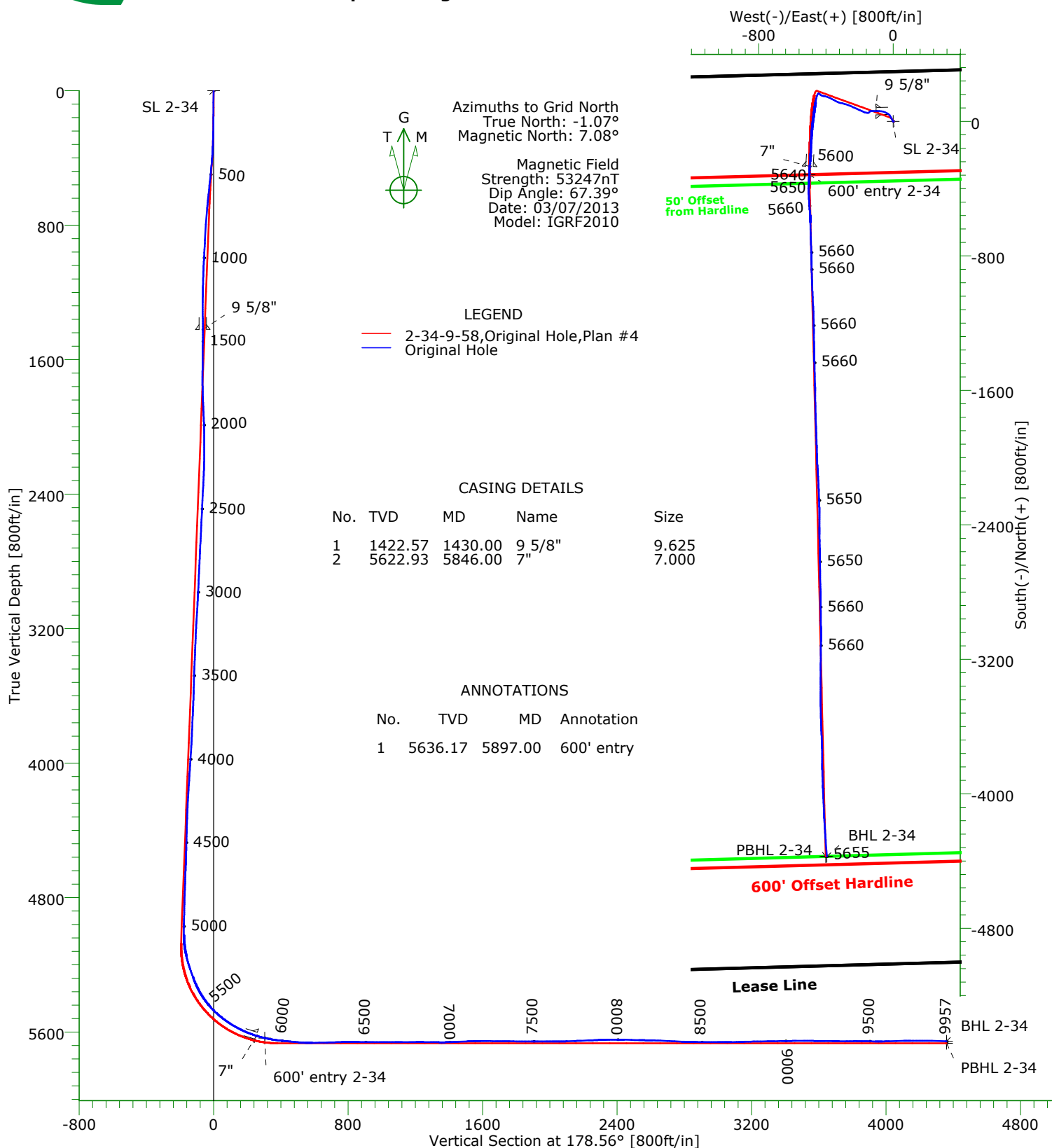
Well: 2-34-9-58

Wellpath: Original Hole



Precision

Directional Services



TARGET DETAILS

Name	TVD	+N/-S	+E/-W	Northing	Easting	Latitude	Longitude	Shape
Surface 2-34	0.00	0.00	0.00	1507293.93	3458797.16	40°42'50.945N103°50'41.763W		Point
600' entry 2-34	5636.17	-316.92	-499.73	1506977.01	3458297.43	40°42'47.906N103°50'48.328W		Point
BHL 2-34	5654.82	-4371.73	-394.57	1502922.20	3458402.59	40°42'07.827N103°50'47.944W		Point
PBHL 2-34	5667.00	-4372.12	-401.95	1502921.81	3458395.21	40°42'07.825N103°50'48.040W		Point

Wellpath: (2-34-9-58/Original Hole)

Created By: Shane Nelson

Date: 03/20/2013

PRECISION DIRECTIONAL SERVICES, INC.

713.435.6250

Precision Directional Services, Inc.

Survey Report

Company: CARRIZO OIL & GAS, INC. Field: Niobrara CONZ'83 Site: Bringelson Ranch 34-41-9-58 Pad Well: 2-34-9-58 Wellpath: Original Hole	Date: 03/20/2013 Co-ordinate(NE) Reference: Well: 2-34-9-58, Grid North Vertical (TVD) Reference: 4736'GL+17'KB 4753.0 Section (VS) Reference: Well (0.00N,0.00E,178.56Azi) Survey Calculation Method: Minimum Curvature	Time: 08:10:22 Page: 1 Db: Adapti
---	---	--

Field: Niobrara CONZ'83 Map System: US State Plane Coordinate System 1983 Geo Datum: GRS 1980 Sys Datum: Mean Sea Level	Map Zone: Colorado, Northern Zone Coordinate System: Well Centre Geomagnetic Model: IGRF2010
--	---

Site: Bringelson Ranch 34-41-9-58 Pad			
Site Position: From: Map Position Uncertainty: 0.00 ft Ground Level: 4736.00 ft	Northing: 1507293.93 ft Easting: 3458811.93 ft	Latitude: 40 42 50.942 N Longitude: 103 50 41.571 W North Reference: Grid Grid Convergence: 1.07 deg	

Well: 2-34-9-58 Centered on 1-23-41-9-58 (Surface Revised 11/01) Well Position: +N/-S 0.00 ft Northing: 1507293.93 ft +E/-W -14.77 ft Easting : 3458797.16 ft Position Uncertainty: 0.00 ft	Slot Name: Latitude: 40 42 50.945 N Longitude: 103 50 41.763 W
--	---

Wellpath: Original Hole Current Datum: 4736'GL+17'KB Magnetic Data: 03/07/2013 Field Strength: 53247 nT Vertical Section: Depth From (TVD) ft	Height 4753.00 ft	Drilled From: Surface Tie-on Depth: 0.00 ft Above System Datum: Mean Sea Level Declination: 8.15 deg Mag Dip Angle: 67.39 deg +E/-W ft Direction deg
0.00	0.00	0.00 178.56

Survey Program for Definitive Wellpath					
Date: 03/18/2013 Actual From ft To ft	Validated: No Survey	Version: 2 Toolcode			Tool Name
144.00	9872.00	Survey #1 (144.00-9872.00)	MWD		Std MWD
9957.00	9957.00	Survey #2 (9957.00-9957.00)	Project		Projection

Survey										
MD ft	Incl deg	Azim deg	TVD ft	+N/-S ft	+E/-W ft	VS ft	DLS deg/100ft	Build deg/100ft	Turn deg/100ft	Tool/Comment
0.00	0.00	0.00	0.00	0.00	0.00	0.00	0.00	0.00	0.00	TIE LINE
144.00	0.20	346.90	144.00	0.24	-0.06	-0.25	0.14	0.14	0.00	MWD
237.00	1.30	325.90	236.99	1.28	-0.69	-1.29	1.20	1.18	-22.58	MWD
330.00	2.50	329.60	329.94	3.90	-2.30	-3.96	1.30	1.29	3.98	MWD
426.00	5.90	332.50	425.67	10.08	-5.64	-10.22	3.55	3.54	3.02	MWD
520.00	6.60	330.30	519.11	19.06	-10.55	-19.32	0.79	0.74	-2.34	MWD
613.00	6.80	332.80	611.47	28.60	-15.71	-28.99	0.38	0.22	2.69	MWD
707.00	6.70	322.40	704.82	37.90	-21.60	-38.43	1.30	-0.11	-11.06	MWD
800.00	6.70	300.30	797.20	44.93	-29.60	-45.66	2.76	0.00	-23.76	MWD
894.00	6.70	294.30	890.56	49.96	-39.33	-50.93	0.74	0.00	-6.38	MWD
988.00	6.50	297.80	983.94	54.69	-49.04	-55.91	0.48	-0.21	3.72	MWD
1081.00	7.40	285.00	1076.26	58.70	-59.48	-60.18	1.92	0.97	-13.76	MWD
1175.00	8.10	278.30	1169.40	61.22	-71.88	-63.01	1.21	0.74	-7.13	MWD
1269.00	6.90	269.00	1262.60	62.08	-84.08	-64.17	1.81	-1.28	-9.89	MWD
1362.00	6.40	265.70	1354.98	61.59	-94.83	-63.96	0.68	-0.54	-3.55	MWD
1444.00	6.10	269.00	1436.49	61.17	-103.75	-63.76	0.57	-0.37	4.02	MWD
1540.00	5.70	273.20	1531.98	61.35	-113.61	-64.19	0.61	-0.42	4.37	MWD
1625.00	5.40	274.30	1616.58	61.89	-121.81	-64.93	0.37	-0.35	1.29	MWD
1711.00	4.70	271.80	1702.25	62.30	-129.37	-65.53	0.85	-0.81	-2.91	MWD
1796.00	3.80	250.50	1787.02	61.47	-135.50	-64.86	2.12	-1.06	-25.06	MWD
1881.00	3.90	217.00	1871.84	58.22	-139.90	-61.72	2.61	0.12	-39.41	MWD
1967.00	3.60	231.70	1957.66	54.21	-143.78	-57.81	1.17	-0.35	17.09	MWD

Precision Directional Services, Inc.

Survey Report

Company: CARRIZO OIL & GAS, INC.
Field: Niobrara CONZ'83
Site: Bringelson Ranch 34-41-9-58 Pad
Well: 2-34-9-58
Wellpath: Original Hole

Date: 03/20/2013 **Time:** 08:10:22 **Page:** 2
Co-ordinate(NE) Reference: Well: 2-34-9-58, Grid North
Vertical (TVD) Reference: 4736'GL+17"KB 4753.0
Section (VS) Reference: Well (0.00N,0.00E,178.56Azi)
Survey Calculation Method: Minimum Curvature **Db:** Adapti

Survey

MD ft	Incl deg	Azim deg	TVD ft	+N/-S ft	+E/-W ft	VS ft	DLS deg/100ft	Build deg/100ft	Turn deg/100ft	Tool/Comment
2052.00	3.70	256.90	2042.49	51.94	-148.54	-55.65	1.88	0.12	29.65	MWD
2137.00	4.40	270.80	2127.28	51.36	-154.47	-55.23	1.41	0.82	16.35	MWD
2223.00	4.90	280.90	2213.00	52.10	-161.38	-56.14	1.11	0.58	11.74	MWD
2308.00	6.10	293.40	2297.61	54.58	-169.09	-58.81	1.99	1.41	14.71	MWD
2393.00	6.50	294.70	2382.09	58.38	-177.60	-62.83	0.50	0.47	1.53	MWD
2478.00	6.70	294.00	2466.53	62.41	-186.51	-67.08	0.25	0.24	-0.82	MWD
2564.00	6.80	292.90	2551.93	66.43	-195.78	-71.33	0.19	0.12	-1.28	MWD
2649.00	6.40	292.00	2636.37	70.17	-204.81	-75.29	0.49	-0.47	-1.06	MWD
2735.00	6.90	294.50	2721.79	74.10	-213.95	-79.46	0.67	0.58	2.91	MWD
2820.00	6.30	291.00	2806.23	77.89	-222.95	-83.47	0.85	-0.71	-4.12	MWD
2905.00	5.70	296.20	2890.76	81.43	-231.09	-87.21	0.95	-0.71	6.12	MWD
2991.00	6.10	296.10	2976.31	85.32	-239.03	-91.30	0.47	0.47	-0.12	MWD
3076.00	7.70	293.40	3060.69	89.57	-248.31	-95.78	1.92	1.88	-3.18	MWD
3161.00	7.90	295.50	3144.90	94.35	-258.81	-100.82	0.41	0.24	2.47	MWD
3247.00	7.30	288.90	3230.15	98.66	-269.31	-105.40	1.23	-0.70	-7.67	MWD
3332.00	7.60	285.70	3314.43	101.93	-279.83	-108.93	0.60	0.35	-3.76	MWD
3417.00	8.10	286.40	3398.63	105.15	-290.99	-112.42	0.60	0.59	0.82	MWD
3503.00	7.40	282.90	3483.85	108.09	-302.20	-115.65	0.98	-0.81	-4.07	MWD
3588.00	7.20	279.50	3568.16	110.19	-312.79	-118.02	0.56	-0.24	-4.00	MWD
3673.00	6.60	291.00	3652.55	112.82	-322.60	-120.89	1.77	-0.71	13.53	MWD
3759.00	5.50	296.90	3738.07	116.46	-330.89	-124.74	1.47	-1.28	6.86	MWD
3844.00	5.40	293.40	3822.68	119.89	-338.20	-128.35	0.41	-0.12	-4.12	MWD
3929.00	6.80	300.30	3907.20	124.02	-346.21	-132.68	1.86	1.65	8.12	MWD
4015.00	7.10	300.30	3992.57	129.27	-355.20	-138.15	0.35	0.35	0.00	MWD
4100.00	7.60	296.60	4076.87	134.44	-364.76	-143.56	0.81	0.59	-4.35	MWD
4185.00	7.40	295.20	4161.14	139.28	-374.74	-148.66	0.32	-0.24	-1.65	MWD
4271.00	7.50	292.70	4246.42	143.81	-384.93	-153.44	0.39	0.12	-2.91	MWD
4356.00	7.10	286.40	4330.73	147.43	-395.09	-157.31	1.05	-0.47	-7.41	MWD
4441.00	7.20	280.10	4415.07	149.85	-405.37	-159.99	0.93	0.12	-7.41	MWD
4527.00	6.90	279.70	4500.42	151.66	-415.77	-162.06	0.35	-0.35	-0.47	MWD
4612.00	5.30	290.80	4584.94	153.92	-424.47	-164.54	2.33	-1.88	13.06	MWD
4697.00	3.30	307.80	4669.70	156.81	-430.07	-167.57	2.77	-2.35	20.00	MWD
4782.00	2.80	315.60	4754.58	159.80	-433.46	-170.64	0.76	-0.59	9.18	MWD
4868.00	2.10	306.80	4840.50	162.24	-436.19	-173.15	0.92	-0.81	-10.23	MWD
4953.00	2.70	302.70	4925.43	164.25	-439.12	-175.24	0.73	0.71	-4.82	MWD
5008.00	4.00	287.50	4980.33	165.53	-442.04	-176.59	2.84	2.36	-27.64	MWD
5051.00	4.00	273.70	5023.23	166.08	-444.97	-177.21	2.23	0.00	-32.09	MWD
5094.00	6.10	225.20	5066.08	164.57	-448.09	-175.77	10.62	4.88	-112.79	MWD
5136.00	10.60	203.60	5107.63	159.45	-451.22	-170.74	12.88	10.71	-51.43	MWD
5179.00	14.90	195.70	5149.56	150.50	-454.30	-161.87	10.77	10.00	-18.37	MWD
5222.00	17.40	193.90	5190.86	138.93	-457.34	-150.38	5.93	5.81	-4.19	MWD
5264.00	19.90	193.20	5230.65	125.88	-460.48	-137.41	5.98	5.95	-1.67	MWD
5307.00	19.30	192.00	5271.16	111.80	-463.63	-123.42	1.68	-1.40	-2.79	MWD
5350.00	22.90	189.20	5311.27	96.59	-466.45	-108.28	8.69	8.37	-6.51	MWD
5393.00	28.00	187.40	5350.09	78.30	-469.09	-90.07	11.99	11.86	-4.19	MWD
5436.00	32.80	187.10	5387.17	56.73	-471.83	-68.56	11.17	11.16	-0.70	MWD
5478.00	38.20	188.00	5421.35	32.56	-475.05	-44.49	12.92	12.86	2.14	MWD
5521.00	42.90	187.30	5454.01	4.86	-478.76	-16.89	10.98	10.93	-1.63	MWD
5563.00	47.00	185.80	5483.73	-24.61	-482.13	12.49	10.08	9.76	-3.57	MWD
5606.00	51.30	185.00	5511.85	-56.99	-485.18	44.78	10.10	10.00	-1.86	MWD
5649.00	55.40	183.60	5537.51	-91.38	-487.76	79.10	9.89	9.53	-3.26	MWD
5691.00	59.10	182.70	5560.23	-126.65	-489.69	114.30	8.99	8.81	-2.14	MWD
5734.00	62.70	182.50	5581.14	-164.17	-491.39	151.77	8.38	8.37	-0.47	MWD

Precision Directional Services, Inc.

Survey Report

Company: CARRIZO OIL & GAS, INC.
Field: Niobrara CONZ'83
Site: Bringelson Ranch 34-41-9-58 Pad
Well: 2-34-9-58
Wellpath: Original Hole

Date: 03/20/2013 **Time:** 08:10:22 **Page:** 3
Co-ordinate(NE) Reference: Well: 2-34-9-58, Grid North
Vertical (TVD) Reference: 4736'GL+17"KB 4753.0
Section (VS) Reference: Well (0.00N,0.00E,178.56Azi)
Survey Calculation Method: Minimum Curvature **Db:** Adapti

Survey

MD ft	Incl deg	Azim deg	TVD ft	+N/-S ft	+E/-W ft	VS ft	DLS deg/100ft	Build deg/100ft	Turn deg/100ft	Tool/Comment
5777.00	66.80	183.20	5599.48	-203.01	-493.33	190.55	9.65	9.53	1.63	MWD
5819.00	71.00	183.70	5614.59	-242.11	-495.69	229.58	10.06	10.00	1.19	MWD
5883.00	75.80	182.70	5632.87	-303.33	-499.11	290.69	7.65	7.50	-1.56	MWD
5897.00	76.94	182.57	5636.17	-316.92	-499.73	304.26	8.19	8.14	-0.94	600' entry
5926.00	79.30	182.30	5642.14	-345.27	-500.94	332.57	8.19	8.14	-0.93	MWD
5969.00	82.90	181.10	5648.79	-387.73	-502.19	374.99	8.81	8.37	-2.79	MWD
6012.00	84.70	178.60	5653.44	-430.47	-502.08	417.72	7.14	4.19	-5.81	MWD
6054.00	84.80	176.70	5657.28	-472.26	-500.37	459.53	4.51	0.24	-4.52	MWD
6096.00	84.60	175.80	5661.16	-513.99	-497.63	501.32	2.19	-0.48	-2.14	MWD
6139.00	86.80	176.50	5664.39	-556.77	-494.75	544.16	5.37	5.12	1.63	MWD
6182.00	91.40	178.60	5665.06	-599.71	-492.92	587.13	11.76	10.70	4.88	MWD
6224.00	91.50	178.50	5664.00	-641.68	-491.85	629.12	0.34	0.24	-0.24	MWD
6267.00	91.50	178.30	5662.87	-684.65	-490.65	672.10	0.46	0.00	-0.47	MWD
6310.00	91.70	177.60	5661.67	-727.61	-489.12	715.08	1.69	0.47	-1.63	MWD
6352.00	92.20	177.90	5660.24	-769.55	-487.47	757.06	1.39	1.19	0.71	MWD
6395.00	90.70	178.80	5659.15	-812.52	-486.23	800.04	4.07	-3.49	2.09	MWD
6437.00	88.60	179.20	5659.41	-854.51	-485.50	842.04	5.09	-5.00	0.95	MWD
6503.00	89.20	178.30	5660.68	-920.48	-484.06	908.02	1.64	0.91	-1.36	MWD
6546.00	89.60	177.60	5661.13	-963.45	-482.52	951.02	1.87	0.93	-1.63	MWD
6589.00	90.00	177.80	5661.28	-1006.41	-480.79	994.01	1.04	0.93	0.47	MWD
6631.00	90.40	177.20	5661.13	-1048.37	-478.96	1036.00	1.72	0.95	-1.43	MWD
6674.00	91.00	177.20	5660.61	-1091.32	-476.86	1078.99	1.40	1.40	0.00	MWD
6717.00	90.00	178.10	5660.23	-1134.28	-475.10	1121.98	3.13	-2.33	2.09	MWD
6759.00	90.00	178.80	5660.23	-1176.26	-473.96	1163.98	1.67	0.00	1.67	MWD
6802.00	90.70	178.50	5659.97	-1219.25	-472.95	1206.98	1.77	1.63	-0.70	MWD
6845.00	89.20	179.00	5660.01	-1262.24	-472.01	1249.98	3.68	-3.49	1.16	MWD
6887.00	89.20	179.20	5660.59	-1304.23	-471.35	1291.97	0.48	0.00	0.48	MWD
6930.00	89.10	178.60	5661.23	-1347.22	-470.53	1334.97	1.41	-0.23	-1.40	MWD
6973.00	90.60	178.50	5661.34	-1390.20	-469.44	1377.96	3.50	3.49	-0.23	MWD
7015.00	92.60	179.30	5660.17	-1432.17	-468.63	1419.94	5.13	4.76	1.90	MWD
7058.00	92.70	178.50	5658.18	-1475.12	-467.81	1462.90	1.87	0.23	-1.86	MWD
7101.00	92.70	178.10	5656.16	-1518.05	-466.53	1505.85	0.93	0.00	-0.93	MWD
7143.00	91.40	178.10	5654.65	-1560.00	-465.14	1547.82	3.10	-3.10	0.00	MWD
7186.00	89.80	179.50	5654.20	-1602.99	-464.24	1590.82	4.94	-3.72	3.26	MWD
7229.00	89.40	179.20	5654.50	-1645.98	-463.75	1633.81	1.16	-0.93	-0.70	MWD
7271.00	89.50	179.00	5654.91	-1687.98	-463.09	1675.81	0.53	0.24	-0.48	MWD
7314.00	89.30	178.50	5655.36	-1730.96	-462.16	1718.80	1.25	-0.47	-1.16	MWD
7357.00	89.50	177.90	5655.81	-1773.94	-460.81	1761.80	1.47	0.47	-1.40	MWD
7399.00	89.70	177.90	5656.10	-1815.91	-459.27	1803.80	0.48	0.48	0.00	MWD
7442.00	89.20	177.80	5656.51	-1858.88	-457.65	1846.79	1.19	-1.16	-0.23	MWD
7485.00	89.60	177.90	5656.96	-1901.85	-456.04	1889.78	0.96	0.93	0.23	MWD
7527.00	90.70	178.60	5656.85	-1943.83	-454.76	1931.78	3.10	2.62	1.67	MWD
7570.00	90.00	178.30	5656.59	-1986.81	-453.59	1974.78	1.77	-1.63	-0.70	MWD
7613.00	89.10	177.20	5656.93	-2029.77	-451.91	2017.78	3.31	-2.09	-2.56	MWD
7655.00	90.80	176.40	5656.97	-2071.71	-449.56	2059.75	4.47	4.05	-1.90	MWD
7698.00	92.50	176.90	5655.73	-2114.61	-447.05	2102.71	4.12	3.95	1.16	MWD
7741.00	92.50	176.70	5653.85	-2157.50	-444.65	2145.65	0.46	0.00	-0.47	MWD
7783.00	92.20	177.80	5652.13	-2199.42	-442.64	2187.60	2.71	-0.71	2.62	MWD
7826.00	92.20	177.80	5650.48	-2242.36	-440.99	2230.57	0.00	0.00	0.00	MWD
7869.00	92.70	178.30	5648.64	-2285.29	-439.53	2273.53	1.64	1.16	1.16	MWD
7912.00	91.50	179.70	5647.07	-2328.26	-438.78	2316.49	4.29	-2.79	3.26	MWD
7954.00	90.40	180.40	5646.37	-2370.25	-438.81	2358.47	3.10	-2.62	1.67	MWD
7997.00	90.30	179.90	5646.11	-2413.25	-438.93	2401.45	1.19	-0.23	-1.16	MWD
8040.00	88.50	179.00	5646.56	-2456.24	-438.51	2444.45	4.68	-4.19	-2.09	MWD

Precision Directional Services, Inc.

Survey Report

Company: CARRIZO OIL & GAS, INC.
Field: Niobrara CONZ'83
Site: Bringelson Ranch 34-41-9-58 Pad
Well: 2-34-9-58
Wellpath: Original Hole

Date: 03/20/2013 **Time:** 08:10:22 **Page:** 4
Co-ordinate(NE) Reference: Well: 2-34-9-58, Grid North
Vertical (TVD) Reference: 4736'GL+17"KB 4753.0
Section (VS) Reference: Well (0.00N,0.00E,178.56Azi)
Survey Calculation Method: Minimum Curvature **Db:** Adapti

Survey

MD ft	Incl deg	Azim deg	TVD ft	+N/-S ft	+E/-W ft	VS ft	DLS deg/100ft	Build deg/100ft	Turn deg/100ft	Tool/Comment
8082.00	88.50	178.50	5647.66	-2498.22	-437.60	2486.43	1.19	0.00	-1.19	MWD
8125.00	88.60	178.60	5648.74	-2541.19	-436.51	2529.42	0.33	0.23	0.23	MWD
8168.00	89.70	180.00	5649.38	-2584.18	-435.99	2572.41	4.14	2.56	3.26	MWD
8210.00	88.00	179.30	5650.22	-2626.17	-435.73	2614.39	4.38	-4.05	-1.67	MWD
8253.00	87.50	179.30	5651.91	-2669.13	-435.20	2657.35	1.16	-1.16	0.00	MWD
8295.00	87.50	178.60	5653.74	-2711.08	-434.44	2699.31	1.67	0.00	-1.67	MWD
8337.00	87.20	178.60	5655.69	-2753.03	-433.41	2741.27	0.71	-0.71	0.00	MWD
8380.00	87.20	178.30	5657.79	-2795.96	-432.25	2784.21	0.70	0.00	-0.70	MWD
8423.00	88.50	179.70	5659.40	-2838.92	-431.50	2827.18	4.44	3.02	3.26	MWD
8465.00	89.90	180.00	5659.99	-2880.92	-431.39	2869.16	3.41	3.33	0.71	MWD
8508.00	90.00	179.50	5660.02	-2923.91	-431.20	2912.16	1.19	0.23	-1.16	MWD
8550.00	89.40	179.00	5660.24	-2965.91	-430.65	2954.15	1.86	-1.43	-1.19	MWD
8593.00	89.00	178.50	5660.84	-3008.90	-429.71	2997.15	1.49	-0.93	-1.16	MWD
8636.00	90.00	179.90	5661.22	-3051.89	-429.11	3040.14	4.00	2.33	3.26	MWD
8678.00	91.50	181.30	5660.67	-3093.88	-429.55	3082.11	4.89	3.57	3.33	MWD
8721.00	91.60	181.10	5659.51	-3136.85	-430.45	3125.05	0.52	0.23	-0.47	MWD
8764.00	91.50	180.40	5658.34	-3179.84	-431.02	3168.00	1.64	-0.23	-1.63	MWD
8806.00	91.40	180.60	5657.28	-3221.82	-431.38	3209.96	0.53	-0.24	0.48	MWD
8849.00	91.00	180.40	5656.38	-3264.81	-431.76	3252.93	1.04	-0.93	-0.47	MWD
8891.00	91.00	180.40	5655.65	-3306.80	-432.05	3294.90	0.00	0.00	0.00	MWD
8934.00	90.90	179.90	5654.93	-3349.80	-432.16	3337.88	1.19	-0.23	-1.16	MWD
8977.00	91.10	180.00	5654.18	-3392.79	-432.13	3380.86	0.52	0.47	0.23	MWD
9019.00	90.70	179.50	5653.52	-3434.78	-431.94	3422.84	1.52	-0.95	-1.19	MWD
9062.00	90.10	179.00	5653.22	-3477.78	-431.38	3465.84	1.82	-1.40	-1.16	MWD
9105.00	90.00	179.00	5653.19	-3520.77	-430.63	3508.84	0.23	-0.23	0.00	MWD
9147.00	89.80	178.50	5653.26	-3562.76	-429.71	3550.84	1.28	-0.48	-1.19	MWD
9190.00	89.60	177.60	5653.49	-3605.74	-428.25	3593.83	2.14	-0.47	-2.09	MWD
9233.00	89.10	176.90	5653.97	-3648.68	-426.19	3636.82	2.00	-1.16	-1.63	MWD
9275.00	89.40	177.40	5654.52	-3690.63	-424.10	3678.80	1.39	0.71	1.19	MWD
9318.00	90.00	180.20	5654.75	-3733.61	-423.20	3721.80	6.66	1.40	6.51	MWD
9361.00	90.00	179.70	5654.75	-3776.61	-423.16	3764.79	1.16	0.00	-1.16	MWD
9403.00	90.20	179.30	5654.67	-3818.61	-422.79	3806.78	1.06	0.48	-0.95	MWD
9446.00	89.40	178.30	5654.82	-3861.60	-421.89	3849.78	2.98	-1.86	-2.33	MWD
9488.00	88.70	177.60	5655.52	-3903.57	-420.39	3891.77	2.36	-1.67	-1.67	MWD
9531.00	88.90	177.90	5656.42	-3946.52	-418.70	3934.76	0.84	0.47	0.70	MWD
9574.00	91.30	177.80	5656.35	-3989.49	-417.09	3977.75	5.59	5.58	-0.23	MWD
9616.00	91.50	177.20	5655.32	-4031.44	-415.26	4019.73	1.51	0.48	-1.43	MWD
9659.00	91.50	177.60	5654.19	-4074.38	-413.31	4062.71	0.93	0.00	0.93	MWD
9702.00	91.50	177.40	5653.07	-4117.32	-411.43	4105.68	0.46	0.00	-0.47	MWD
9744.00	90.20	176.70	5652.45	-4159.26	-409.27	4147.66	3.52	-3.10	-1.67	MWD
9787.00	89.90	176.40	5652.41	-4202.18	-406.69	4190.64	0.99	-0.70	-0.70	MWD
9830.00	89.30	176.20	5652.71	-4245.09	-403.91	4233.60	1.47	-1.40	-0.47	MWD
9872.00	89.00	175.70	5653.33	-4286.98	-400.95	4275.55	1.39	-0.71	-1.19	MWD
9957.00	89.00	175.70	5654.82	-4371.73	-394.57	4360.43	0.00	0.00	0.00	Project

Annotation

MD ft	TVD ft	
5897.00	5636.17	600' entry