

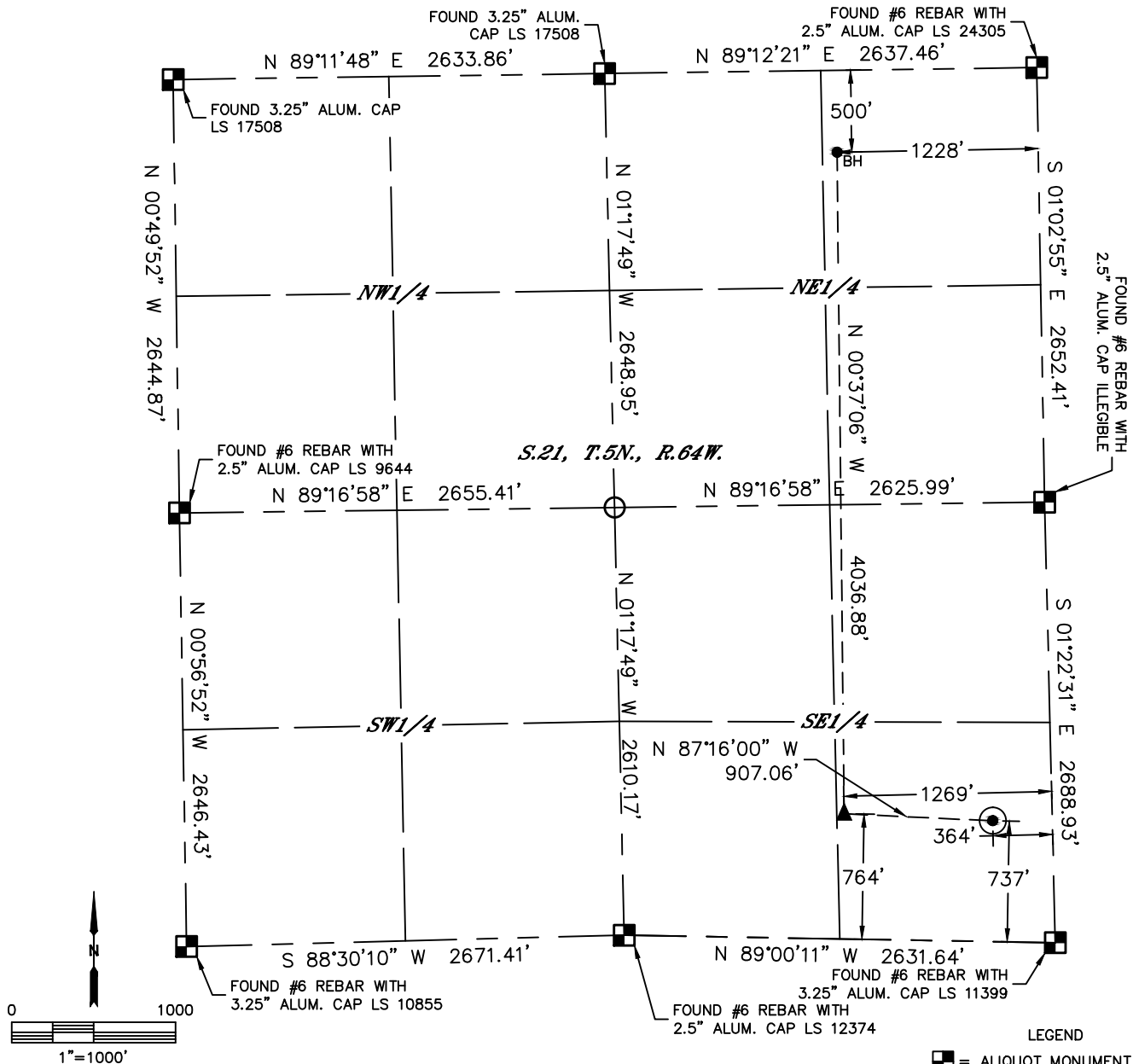


Lat40°, Inc. 6250 W. 10th Street, Unit 2, Greeley, CO 970-515-5294

WELL LOCATION CERTIFICATE

CHESNUT 21X-414

SECTION: 21
TOWNSHIP: 5N
RANGE: 64W
6TH. P.M.
WELD COUNTY, CO



CLIENT: PDC ENERGY				LANDMAN: JEFF DILLINGHAM			
INSTRUMENT OPERATOR: ADAM KELLY				SURVEY DATE: 11/6/2014		SURFACE USE: CROPLAND	
SHL FOOTAGE		SHL LAT°	SHL LONG°	SHL PDOP	SHL ELEV (FT.)	SHL 1/4/1/4	SHL S-T-R
737	FSL 364	FEL	40.37950	-104.54661	2.1	4640	SESE 21-5-64

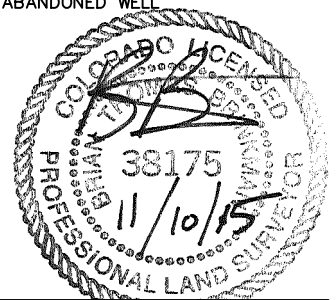
BHL FOOTAGE				BHL LAT °	BHL LONG °	BHL S-T-R	EP LAT °	EP LONG °	EP S-T-R
500	FNL	1228	FEL	40.39072	-104.54986	21-5-64	40.37964	-104.54986	21-5-64

NEAREST CULTURAL ITEMS	
BUILDING	±468' SE
BUILDING UNIT	±468' SE
HIGH OCCUPANCY BUILDING UNIT	±3090' NW
DESIGNATED OUTSIDE ACTIVITY AREA	5280'+
PUBLIC ROAD (COUNTY ROAD 55)	±348' E
ABOVE GROUND UTILITY	±375' E
RAILROAD	±2012' N
PROPERTY LINE	±364' E

NOTE:

- 1) Bearings shown are Grid Bearings of the Colorado State Plane Coordinate System, North Zone, North American Datum 1983. The lineal dimensions as contained herein are based upon the "U.S. Survey Foot."
- 2) Distances to section lines measured at 90 degrees from said section lines.
- 3) Ground elevations are based on an observed GPS elevation (NAVD 1988 DATUM).
- 4) Latitude and Longitude shown are (NAD 83 DATUM).
- 5) IMPROVEMENTS: See LOCATION DRAWING for all visible improvements within 500' of oil and gas location.
- 6) This map does not represent a boundary survey.

- LEGEND
- = ALIQUOT MONUMENT AS DESCRIBED
 - = CALCULATED POSITION
 - = SURFACE HOLE LOCATION (SHL)
 - ▲ = ENTRY POINT LOCATION (EP)
 - BH = BOTTOM HOLE LOCATION (BHL)
 - ⊙ = EXISTING WELL
 - ⊙ = ABANDONED WELL



Brian T. Brinkman—On behalf of Lat40°, Inc.
Colorado Licensed Professional Land Surveyor No. 38175
DATE: 11/10/2015
PROJECT#: 2014040

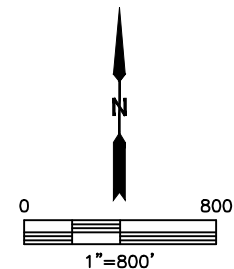
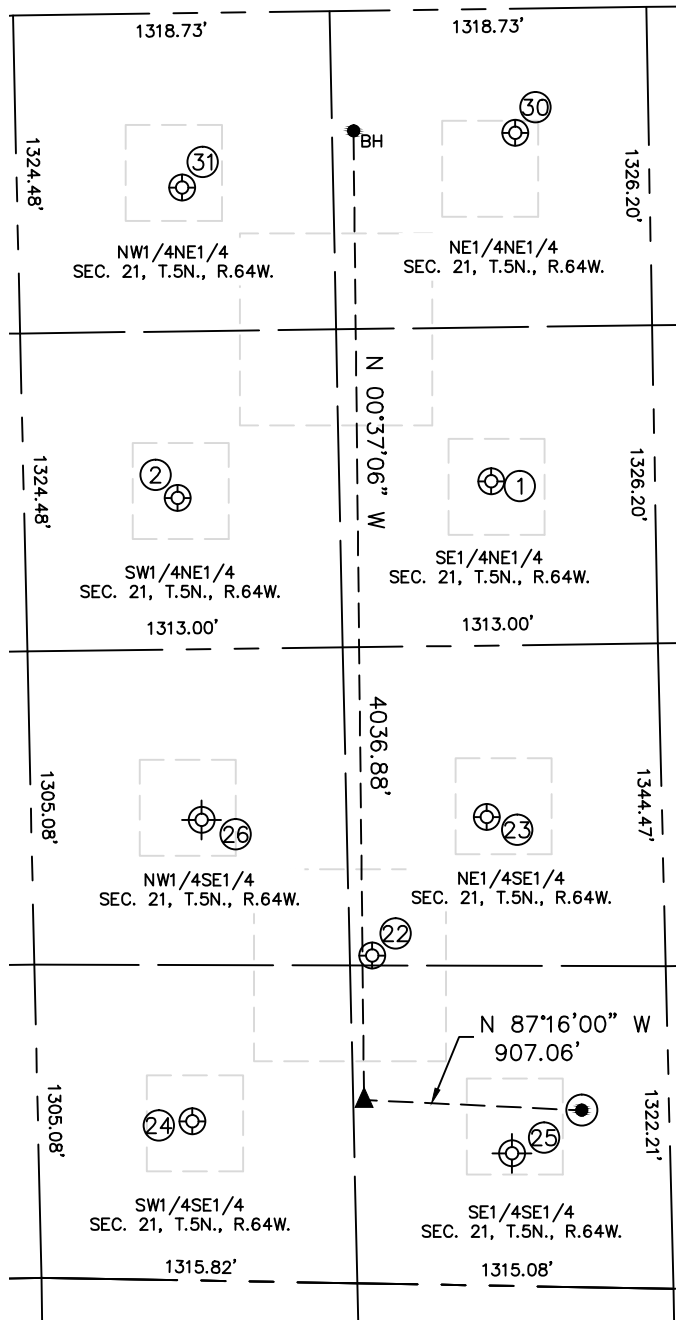


Lat40°, Inc. 6250 W. 10th Street, Unit 2, Greeley, CO 970-515-5294

SITE SKETCH

CHESNUT 21X-414

SECTION: 21
TOWNSHIP: 5N
RANGE: 64W
6TH. P.M.
WELD COUNTY, CO



WELL NO.	WELL NAME	SHL FOOTAGE				SHL LAT°	SHL LONG°	PDOP	ELEV (FT.)	1/4/1/4
1	KOHLER 8-21	1969	FNL	683	FEL	40.38670	-104.54786	2.4	4609	SENE
2	KOHLER 7-21	2018	FNL	1993	FEL	40.38655	-104.55255	2.0	4611	SWNE
22	CHESNUT 5	1366	FSL	1221	FEL	40.38129	-104.54971	1.9	4634	NESE
23	CHESNUT 1	1956	FSL	730	FEL	40.38286	-104.54798	1.7	4621	NESE
24	CHESNUT 3	662	FSL	1985	FEL	40.37942	-104.55243	1.9	4629	SWSE
25	CHESNUT 2	550	FSL	660	FEL	40.37899	-104.54772	N/A	4636	SESE
26	CHESNUT 4	1915	FSL	1915	FEL	40.38278	-104.55222	N/A	4624	NWSE
30	KOHLER 1-21	518	FNL	555	FEL	40.39068	-104.54744	1.6	4604	NENE
31	PLATTE VALLEY 2-21	727	FNL	1947	FEL	40.39009	-104.55243	1.6	4608	NWNE

NOTE: THE ABANDONED WELL DATA SHOWN IN RED ABOVE WAS OBTAINED FROM COGCC SCOUT CARDS.

DATE: 11/10/2015
PROJECT#: 2014040