

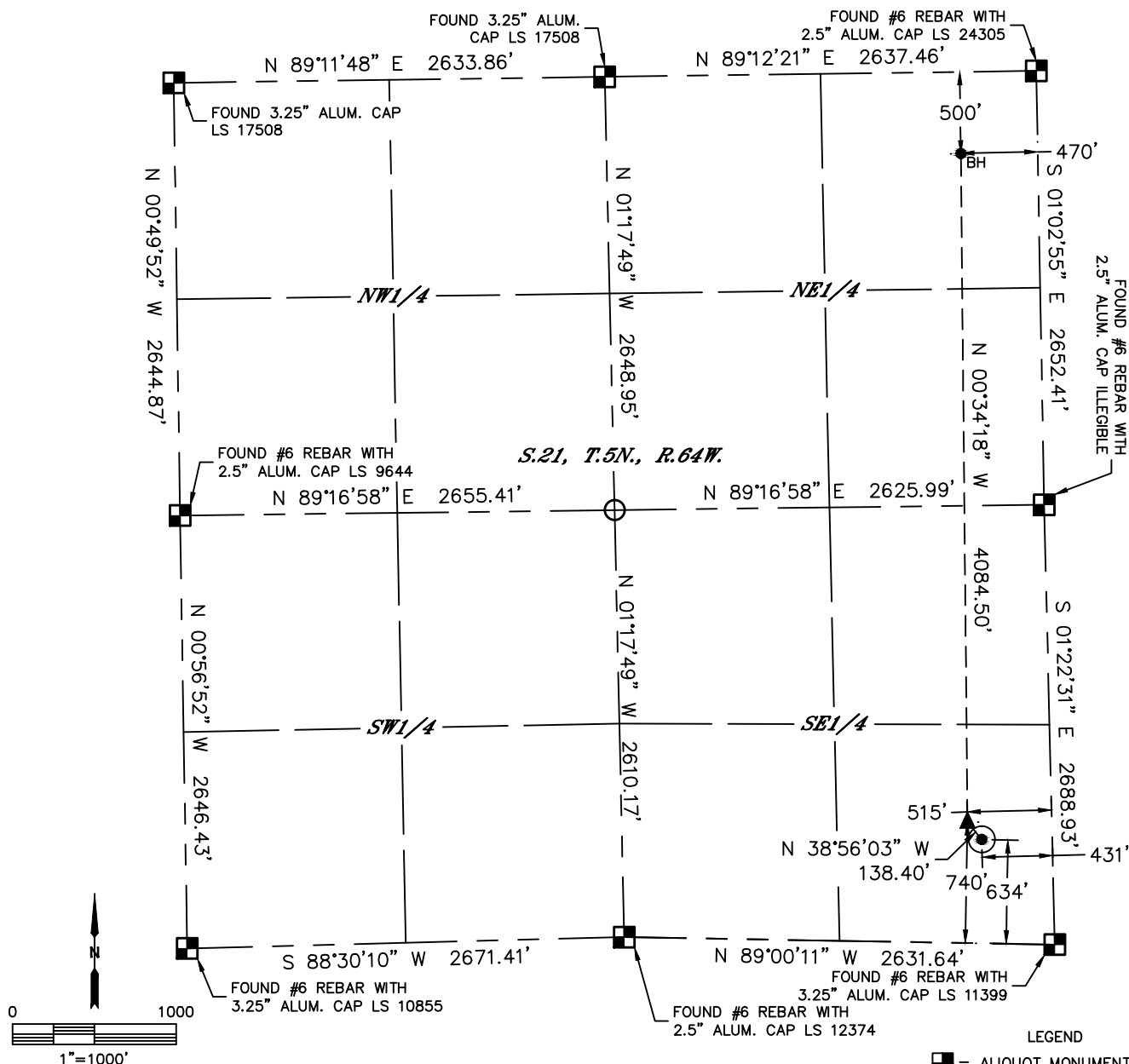


Lat40°, Inc. 6250 W. 10th Street, Unit 2, Greeley, CO 970-515-5294

WELL LOCATION CERTIFICATE

CHESNUT 21W-434

SECTION: 21
TOWNSHIP: 5N
RANGE: 64W
6TH. P.M.
WELD COUNTY, CO



CLIENT: PDC ENERGY			LANDMAN: JEFF DILLINGHAM			
INSTRUMENT OPERATOR: ADAM KELLY			SURVEY DATE: 11/6/2014		SURFACE USE: CROPLAND	
SHL FOOTAGE	SHL LAT °	SHL LONG °	SHL PDOP	SHL ELEV (FT.)	SHL 1/4/1/4	SHL S-T-R
634 FSL 431 FEL	40.37922	-104.54684	1.8	4644	SESE	21-5-64

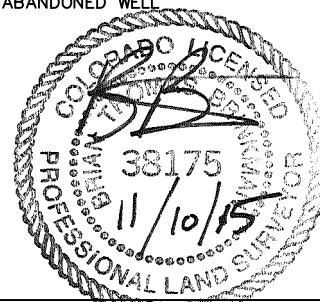
BHL FOOTAGE	BHL LAT °	BHL LONG °	BHL S-T-R	EP LAT °	EP LONG °	EP S-T-R
500 FNL 470 FEL	40.39073	-104.54714	21-5-64	40.37952	-104.54715	21-5-64

NOTE:

- 1) Bearings shown are Grid Bearings of the Colorado State Plane Coordinate System, North Zone, North American Datum 1983. The lineal dimensions as contained herein are based upon the "U.S. Survey Foot."
- 2) Distances to section lines measured at 90 degrees from said section lines.
- 3) Ground elevations are based on an observed GPS elevation (NAVD 1988 DATUM).
- 4) Latitude and Longitude shown are (NAD 83 DATUM).
- 5) IMPROVEMENTS: See LOCATION DRAWING for all visible improvements within 500' of oil and gas location.
- 6) This map does not represent a boundary survey.

NEAREST CULTURAL ITEMS	
BUILDING	±416' SE
BUILDING UNIT	±437' SE
HIGH OCCUPANCY BUILDING UNIT	±3070' NW
DESIGNATED OUTSIDE ACTIVITY AREA	5280'+
PUBLIC ROAD (COUNTY ROAD 55)	±415' E
ABOVE GROUND UTILITY	±443' E
RAILROAD	±2112' N
PROPERTY LINE	±431' E

- LEGEND
- = ALIQUOT MONUMENT AS DESCRIBED
 - = CALCULATED POSITION
 - = SURFACE HOLE LOCATION (SHL)
 - ▲ = ENTRY POINT LOCATION (EP)
 - BH = BOTTOM HOLE LOCATION (BHL)
 - ⊕ = EXISTING WELL
 - ⊙ = ABANDONED WELL



Brian T. Brinkman—On behalf of Lat40°, Inc.
Colorado Licensed Professional Land Surveyor No. 38175
DATE: 11/10/2015
PROJECT#: 2014040

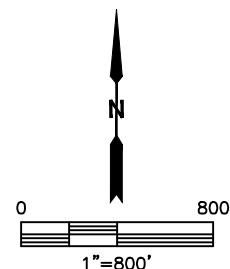
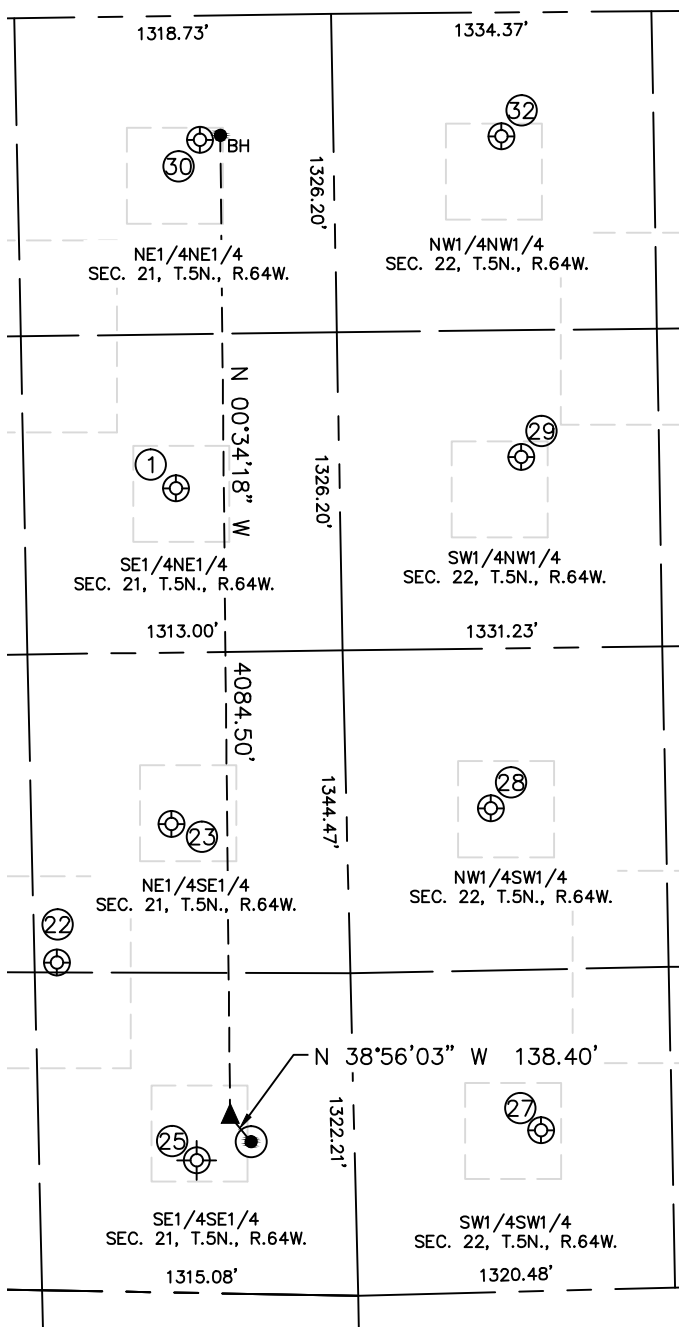


Lat40°, Inc. 6250 W. 10th Street, Unit 2, Greeley, CO 970-515-5294

SITE SKETCH

CHESNUT 21W-434

SECTION: 21
TOWNSHIP: 5N
RANGE: 64W
6TH. P.M.
WELD COUNTY, CO



WELL NO.	WELL NAME	SHL FOOTAGE				SHL LAT°	SHL LONG°	PDOP	ELEV (FT.)	1/4/1/4
1	KOHLER 8-21	1969	FNL	683	FEL	40.38670	-104.54786	2.4	4609	SENE
22	CHESNUT 5	1366	FSL	1221	FEL	40.38129	-104.54971	1.9	4634	NESE
23	CHESNUT 1	1956	FSL	730	FEL	40.38286	-104.54798	1.7	4621	NESE
25	CHESNUT 2	550	FSL	660	FEL	40.37899	-104.54772	N/A	4636	SESE
27	THOUTT 22-2	670	FSL	778	FWL	40.37932	-104.54251	2.4	4614	SWSW
28	THOUTT 22-1	2016	FSL	601	FWL	40.38300	-104.54321	2.3	4605	NWSW
29	RICE 22-2	1853	FNL	758	FWL	40.38702	-104.54270	1.6	4607	SWNW
30	KOHLER 1-21	518	FNL	555	FEL	40.39068	-104.54744	1.6	4604	NENE
32	KALEB 1	516	FNL	699	FWL	40.39068	-104.54294	1.7	4577	NWNW

NOTE: THE ABANDONED WELL DATA SHOWN IN RED ABOVE WAS OBTAINED FROM COGCC SCOUT CARDS.

DATE: 11/10/2015
PROJECT#: 2014040