



**Premier Directional Drilling**  
12941 North Freeway Suite 400  
Houston, Texas 77060  
PH: #281-673-4000

**Meguire 3N-16HZ**  
**Scale 5":100' - MD**  
**10/13/2015 11:41 PM**

**Oper. Company:** Anadarko

**Well:** Meguire 3N-16HZ

**Field:** Wattenberg

**Rig:** Precision 462

**Well ID:** 05123419780000

**Job Number:** R15401

**Notes:** LWD Recorded Mode Data  
Gamma Correction Determined by Pipe ID & OD, Mud Weight & Bit Size

**State:** Co

**County:** Weld

**Country:** US

**Location:** 2N-65W-21

**Start Date:** 10/10/2015 20:15:00

**End Date:** 10/13/2015 11:18:24

**Latitude:** 40.124762

**Longitude:** -104.670536

**Elev KB:** 20'

**Elev DF:** 4908'

**Elev GL:** 4888'

**Notes:** Datum: NAD1983 Map Zone: 13N (108 W to 102 W) Total Correction: 8.00° Grid Convergence: 0.21° (True North)

**Operator 1:** David Clancy

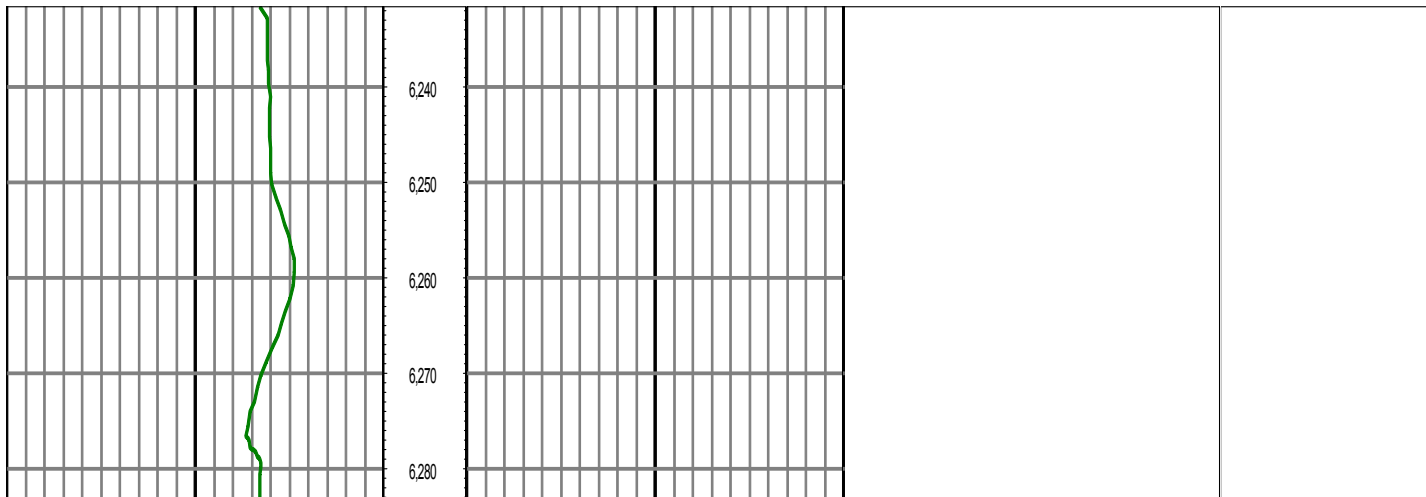
**Operator 2:** Justin Wallace

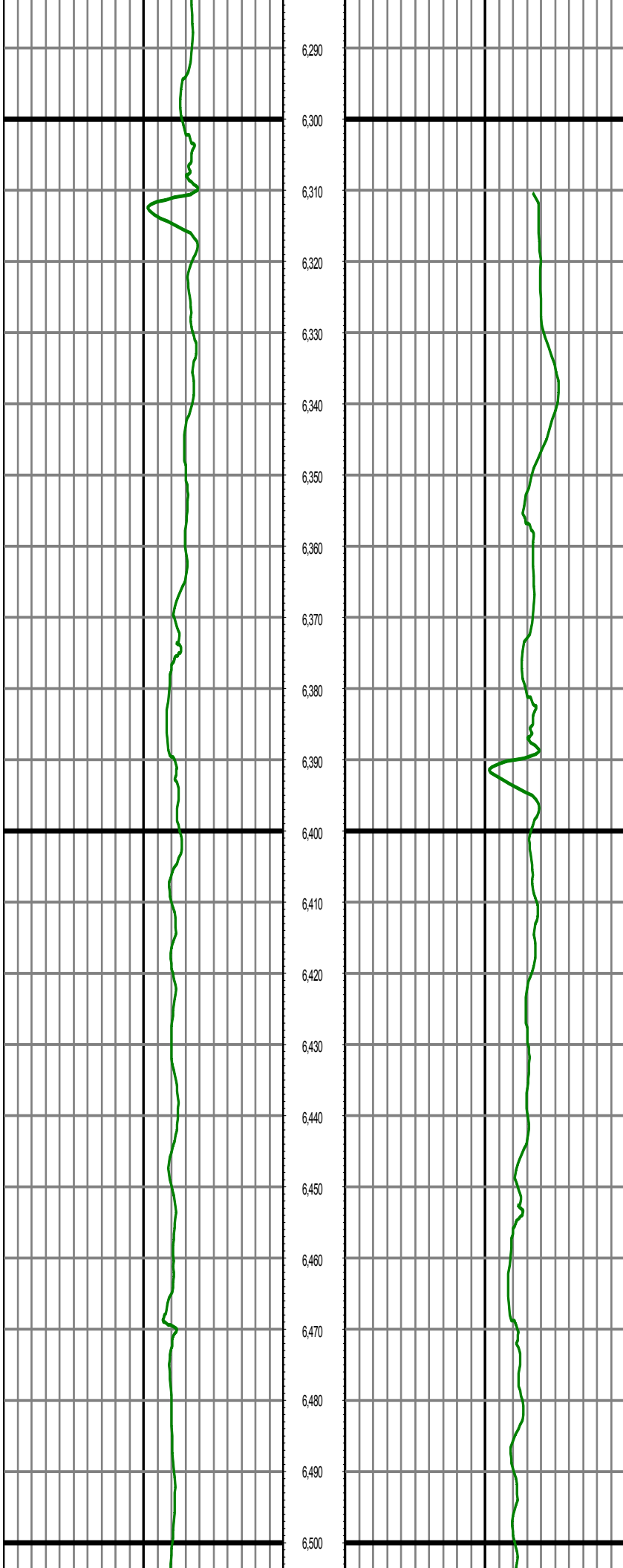
**Notes:** Smoothing: 7 Gap Fill: 10 Tool Type: Mud Pulse Calculation Method: Minimum Curvature

Tool Run Data	Run #1	Run #2	Run #3	Run #4	Run #5
Tool S/N	189				
Bit Size	8.5				
Cal Factor	1.06				
Survey Offset:	65.90				
Gamma Offset	63.90				
Resistivity Offset	0.00				
Start Depth	6310.00				
StartDate	10/10/2015				
StartTime	20:15				
EndDepth	15132.00				
EndDate	10/13/2015				
EndTime	11:18				
Hole Data			Casing Data		
Size	From	To	Size	From	To
8.5	1859.00	15132.00	9 5/8	0.00	1859.00

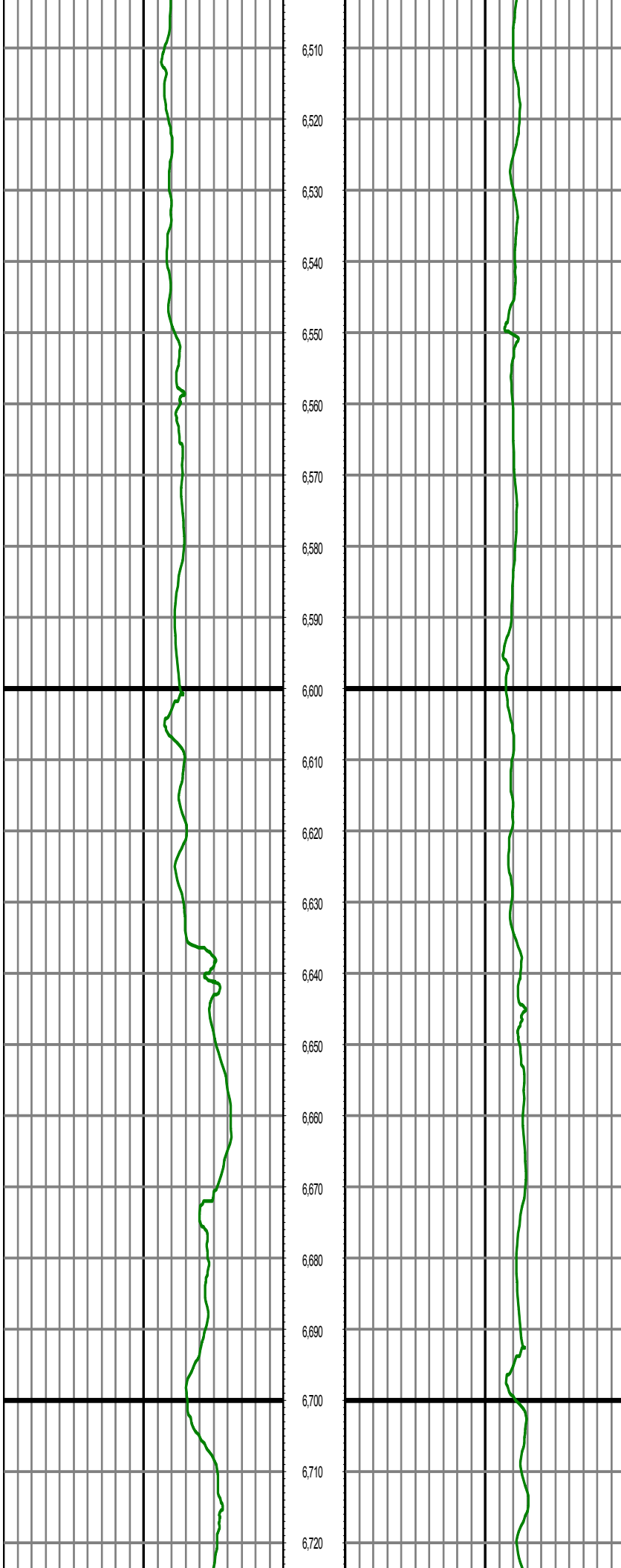
*All interpretations are opinions based on inferences from electrical or other measurements and we cannot and do not guarantee the accuracy or correctness of any interpretation, and we shall not except in the case of gross or willful negligence on our part, be liable or responsible for any loss, cost damages or expenses incurred or sustained by anyone resulting from an interpretation made by any of our officers, agents, or employees.*

0.00 GR RM(API) on TVD 200.00 MD 0.00 GR RM(API) on MD 200.00 Surveys (MD/INC/AZ/TVD/VS)  
200.00 2 400.00 FT 200.00 2 400.00



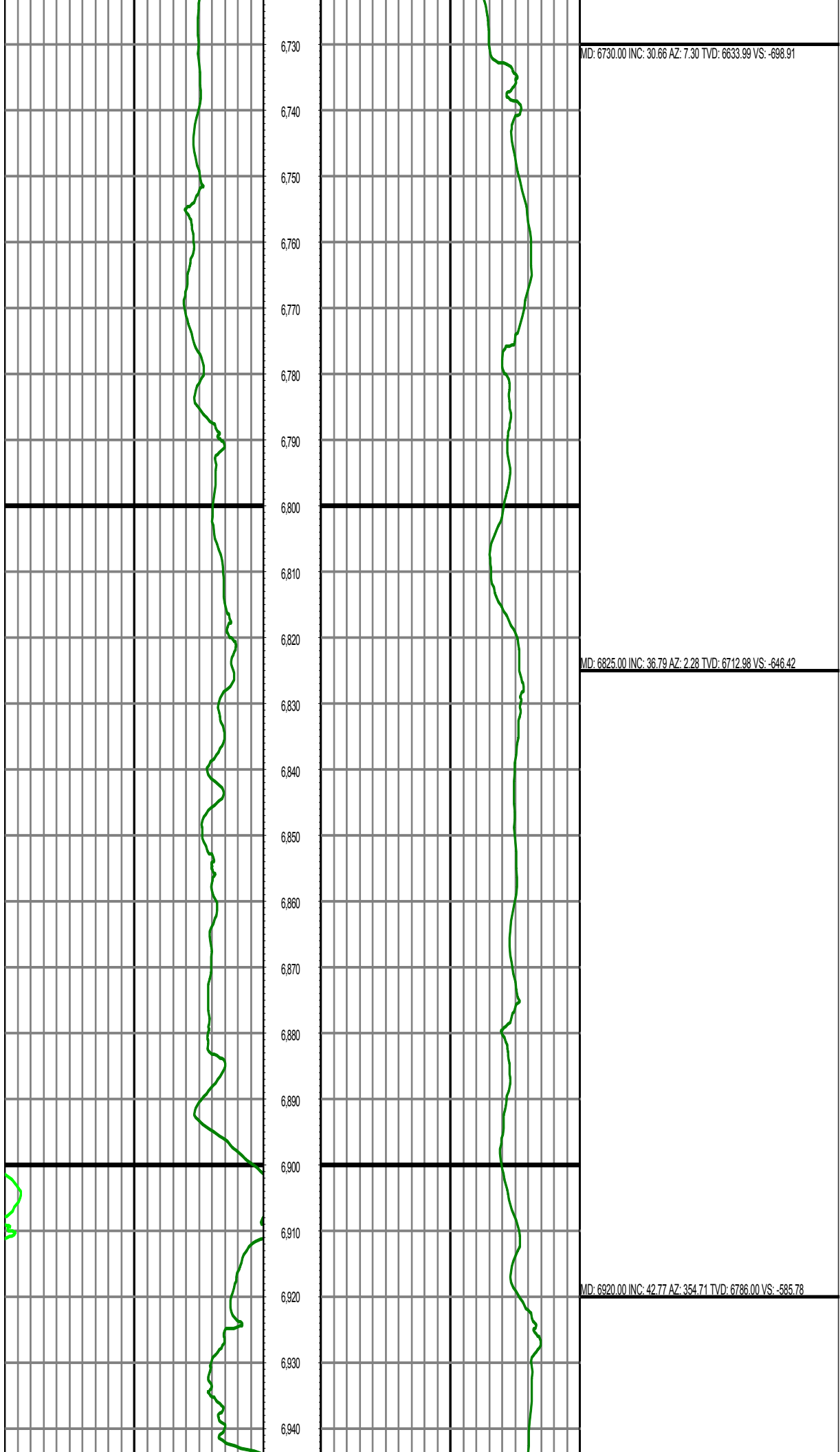


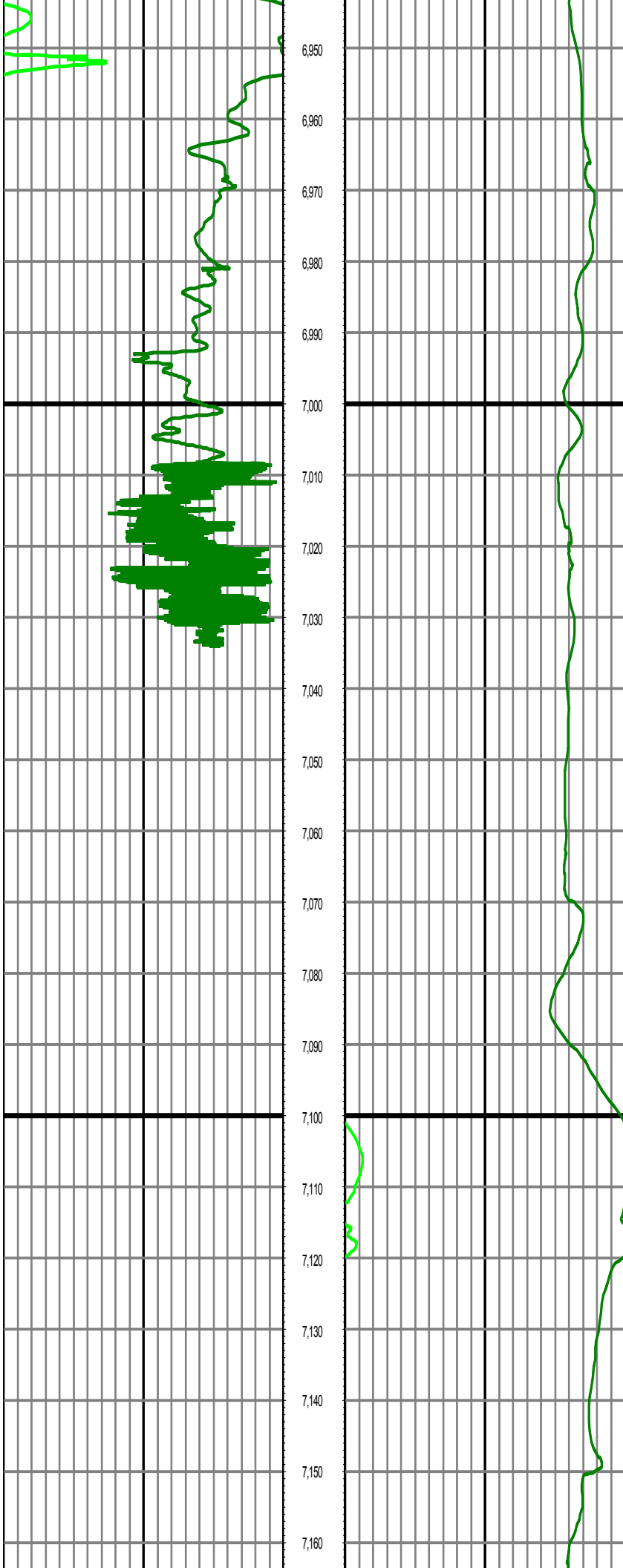
MD: 6446.00 INC: 3.11 AZ: 328.83 TVD: 6366.98 VS: -786.44



MD: 6541.00 INC: 14.40 AZ: 351.64 TVD: 6460.74 VS: -772.48

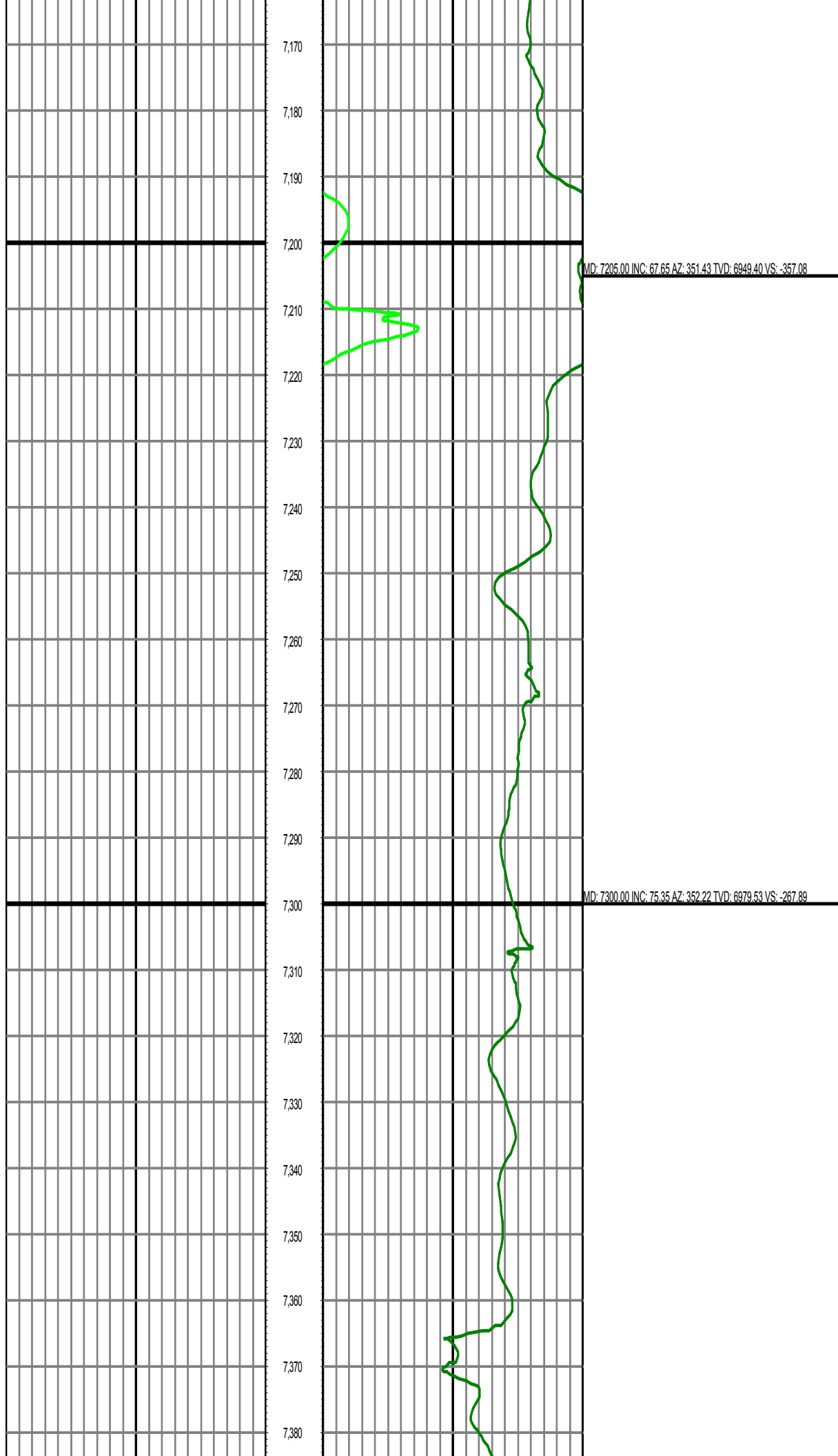
MD: 6636.00 INC: 23.78 AZ: 3.99 TVD: 6550.45 VS: -741.61

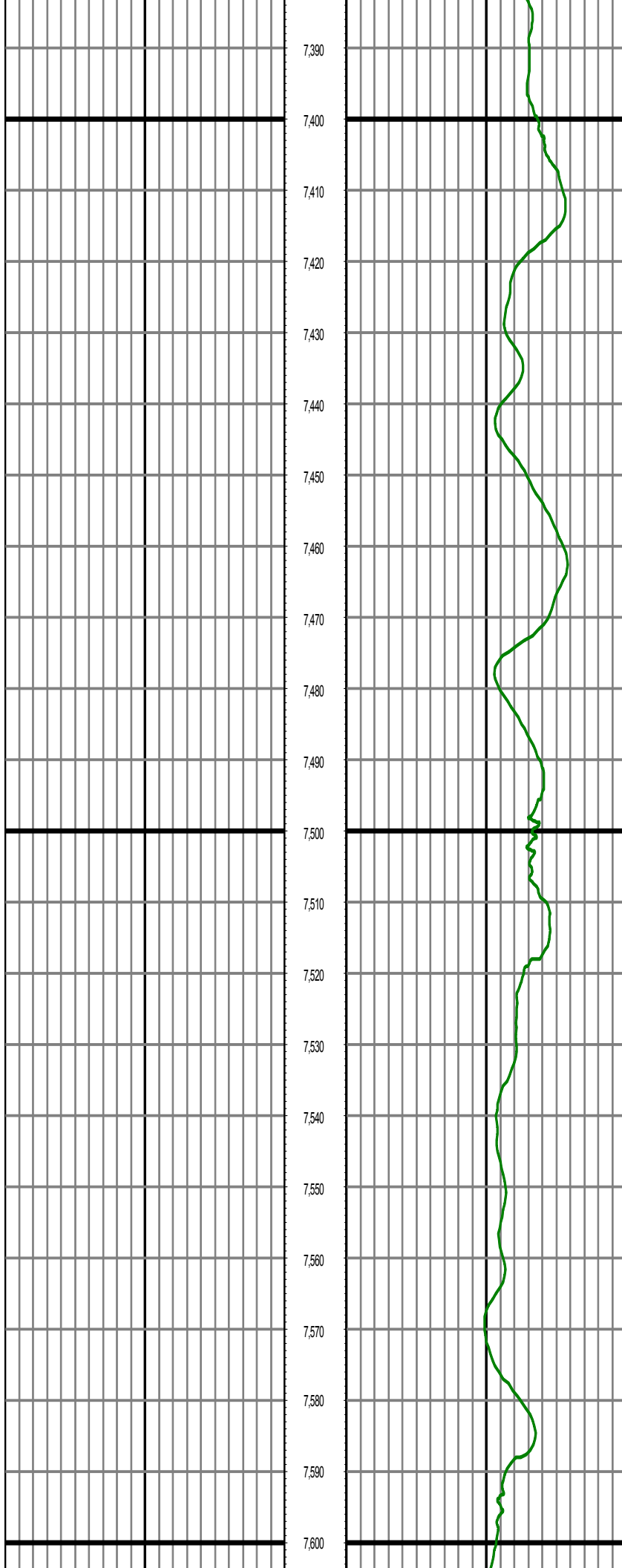




MD: 7015.00 INC: 50.11 AZ: 352.77 TVD: 6851.43 VS: -517.36

MD: 7111.00 INC: 58.86 AZ: 350.85 TVD: 6907.14 VS: -440.03

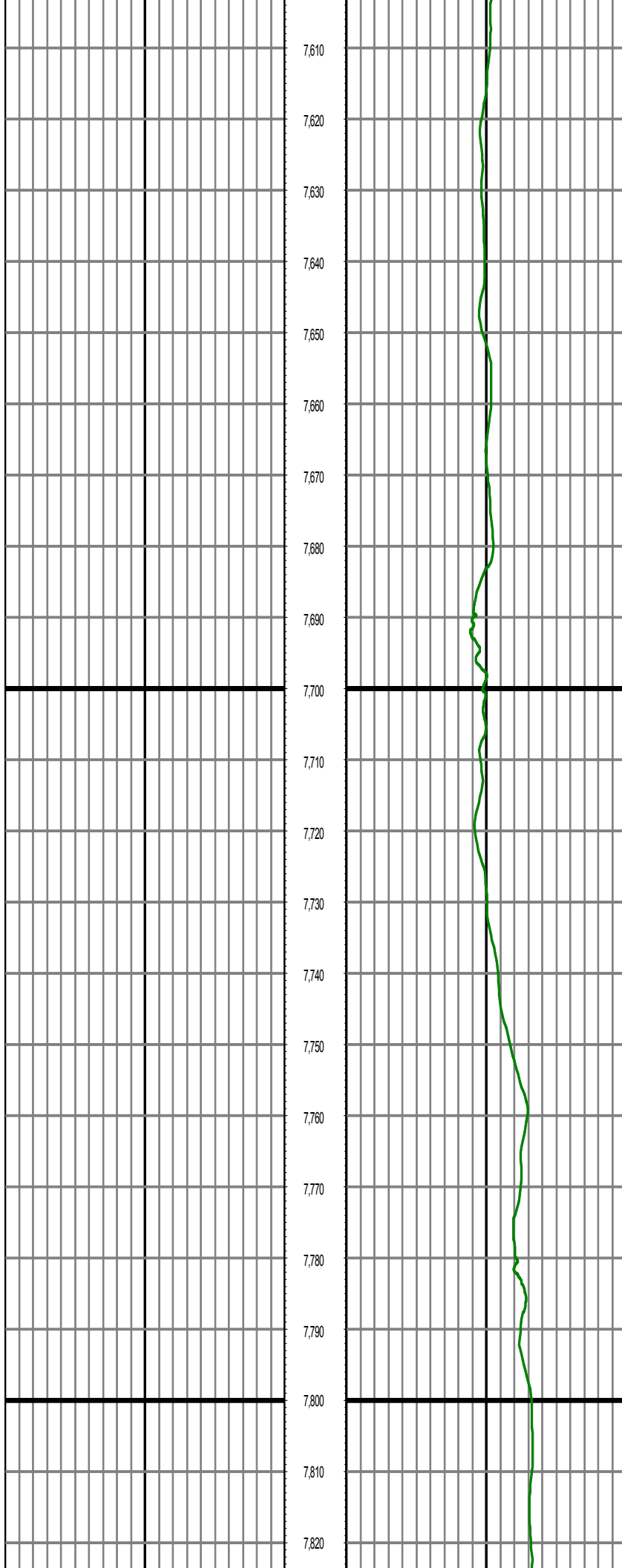




MD: 7396.00 INC: 81.18 AZ: 355.56 TVD: 6999.05 VS: -174.42

MD: 7491.00 INC: 85.02 AZ: 359.97 TVD: 7010.46 VS: -80.19

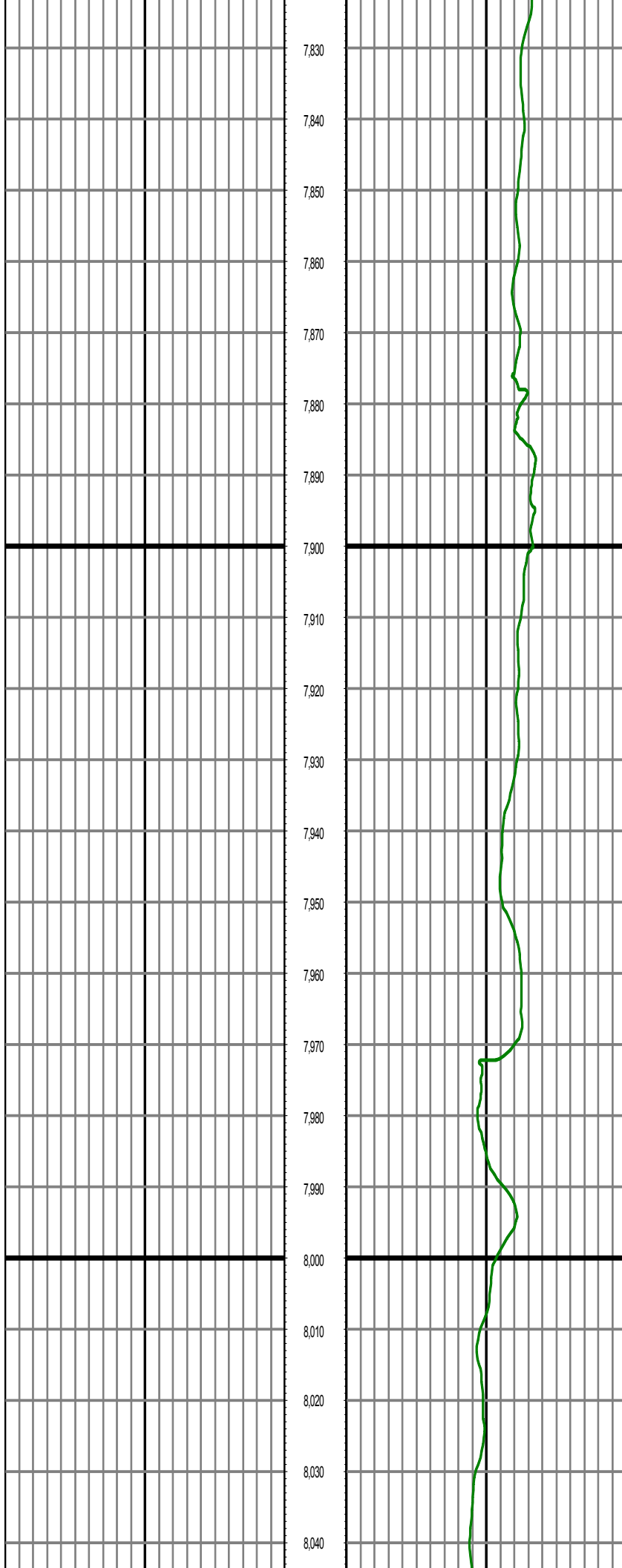
MD: 7586.00 INC: 88.49 AZ: 0.17 TVD: 7015.84 VS: 14.64



MD: 7682.00 INC: 90.24 AZ: 0.13 TVD: 7016.91 VS: 110.62

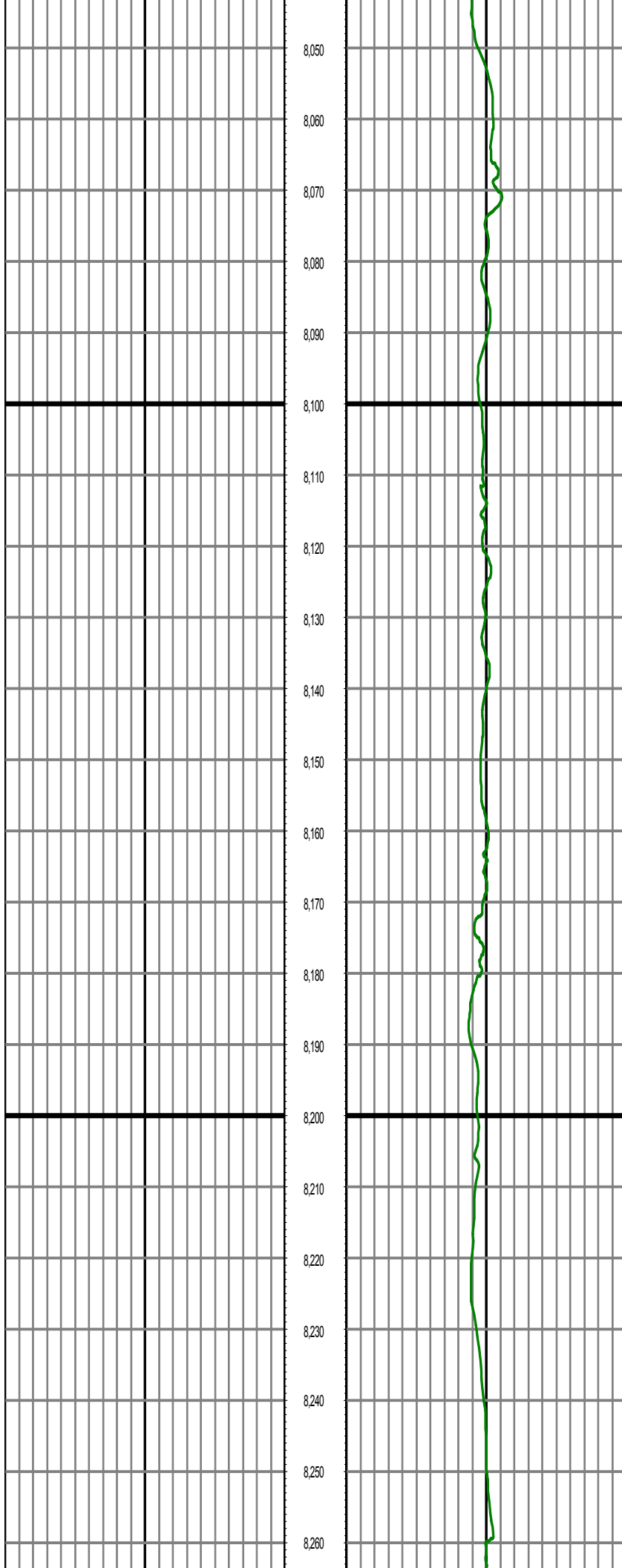
MD: 7777.00 INC: 89.58 AZ: 359.33 TVD: 7017.06 VS: 205.62





MD: 7872.00 INC: 90.83 AZ: 358.53 TVD: 7016.72 VS: 300.61

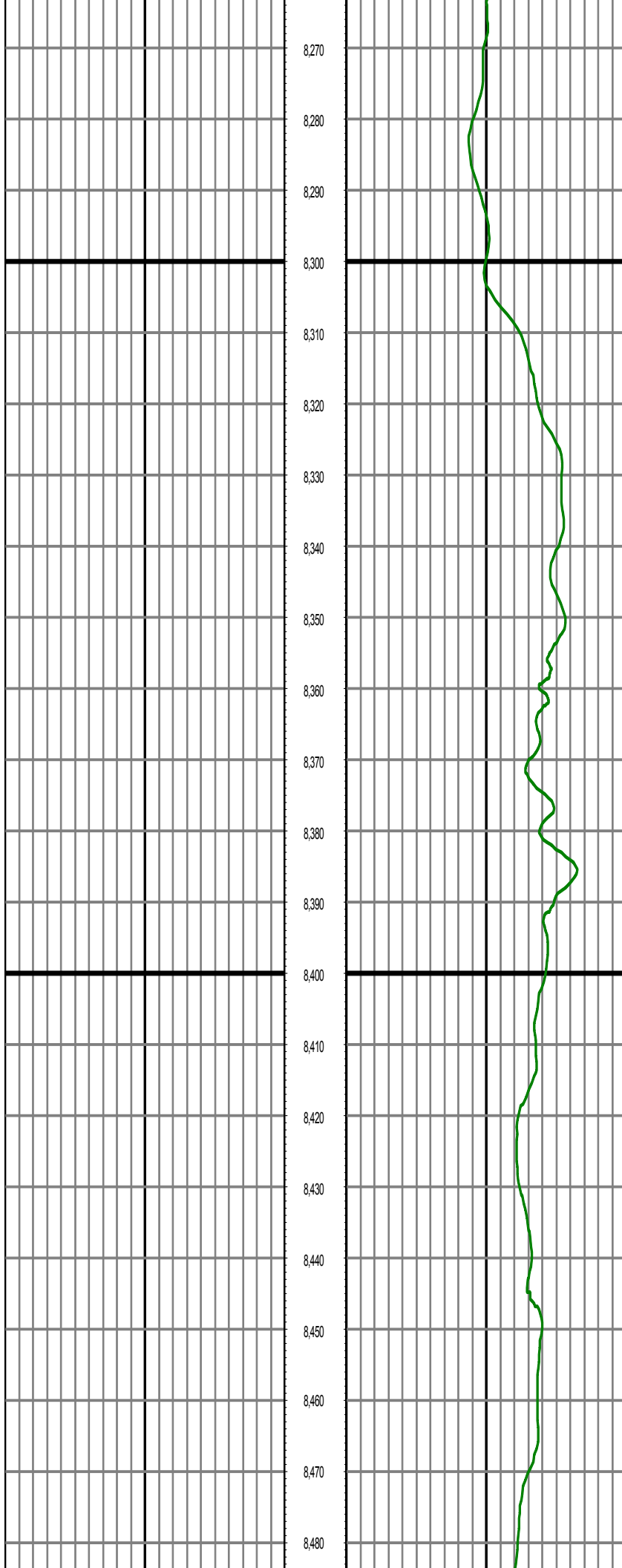
MD: 7968.00 INC: 88.55 AZ: 358.65 TVD: 7017.23 VS: 396.59



MD: 8063.00 INC: 89.48 AZ: 358.23 TVD: 7018.87 VS: 491.55

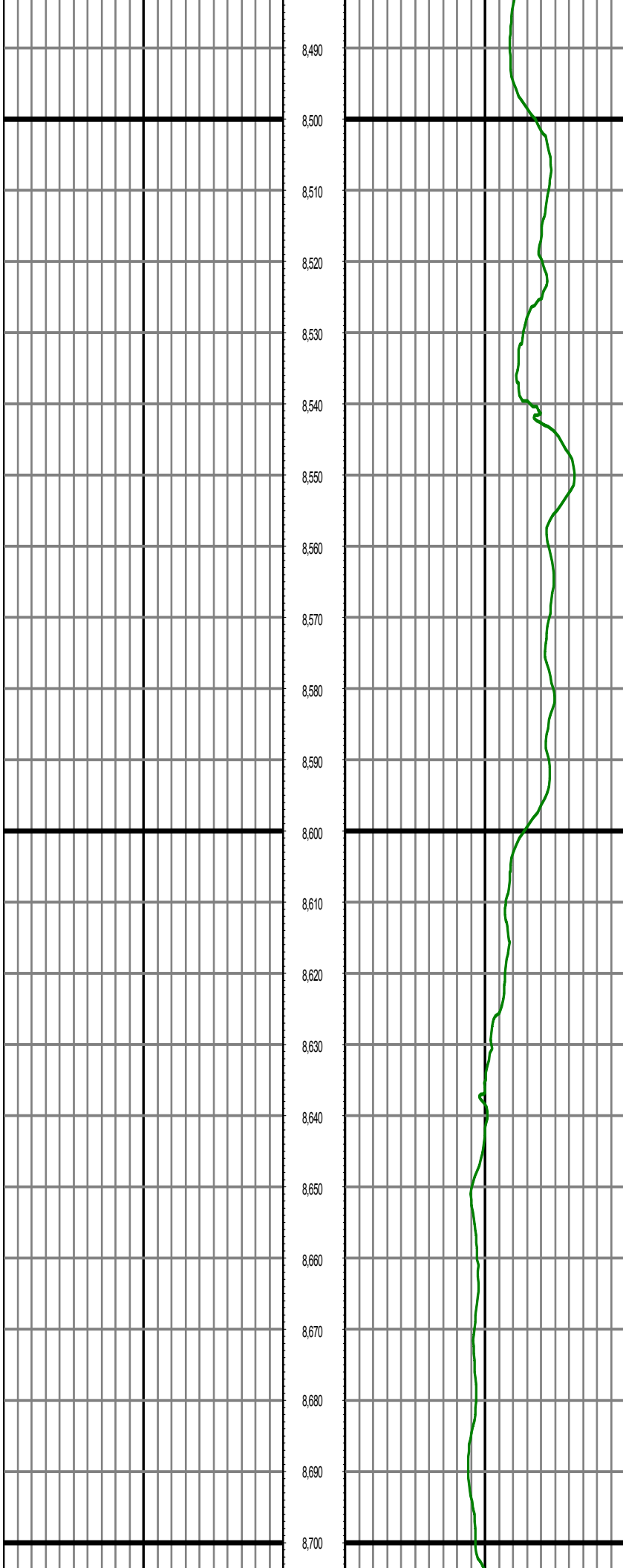
MD: 8158.00 INC: 90.29 AZ: 358.07 TVD: 7019.06 VS: 586.52

MD: 8253.00 INC: 90.63 AZ: 358.52 TVD: 7018.30 VS: 681.49



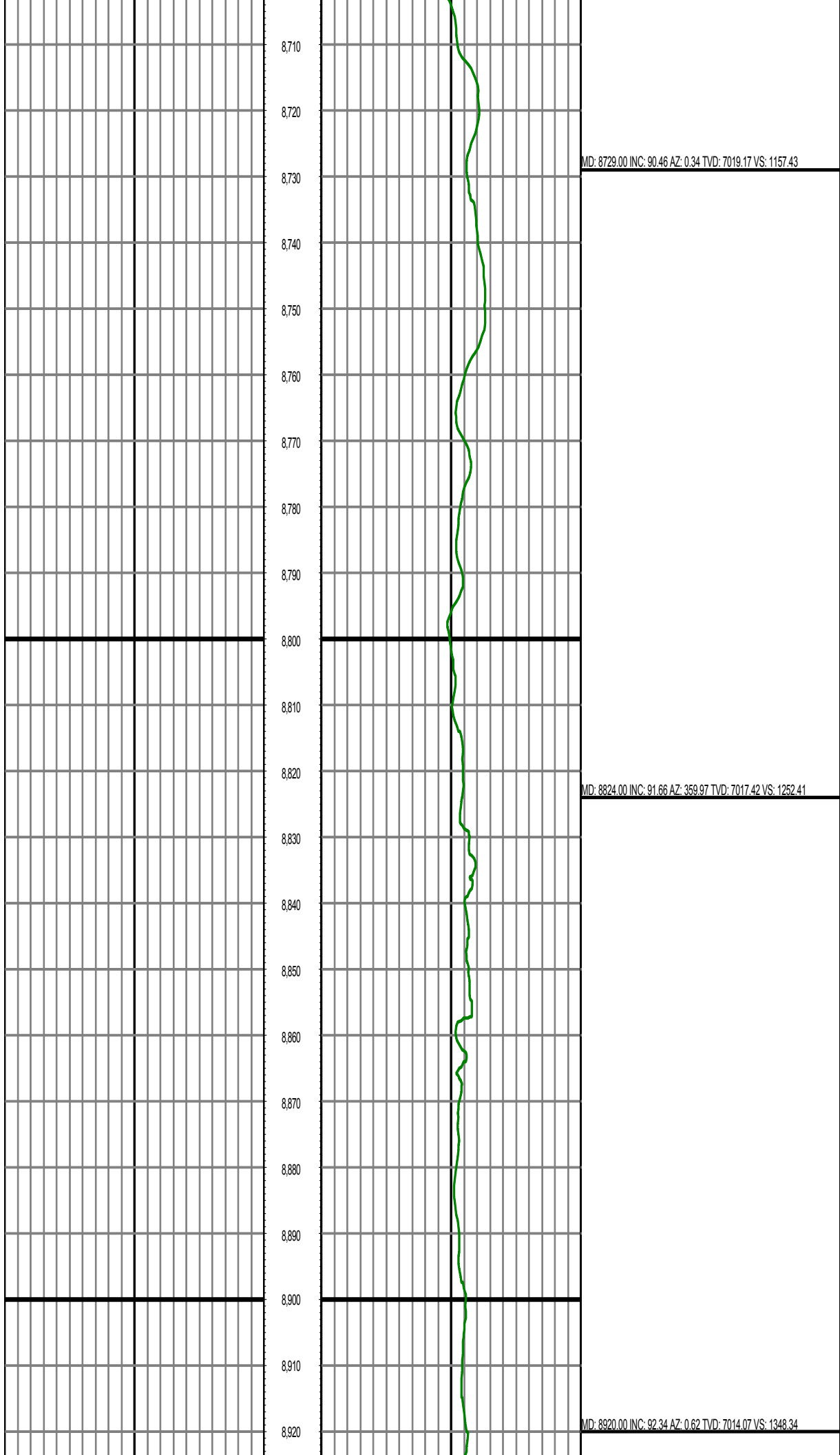
MD: 8348.00 INC: 90.93 AZ: 359.32 TVD: 7017.00 VS: 776.48

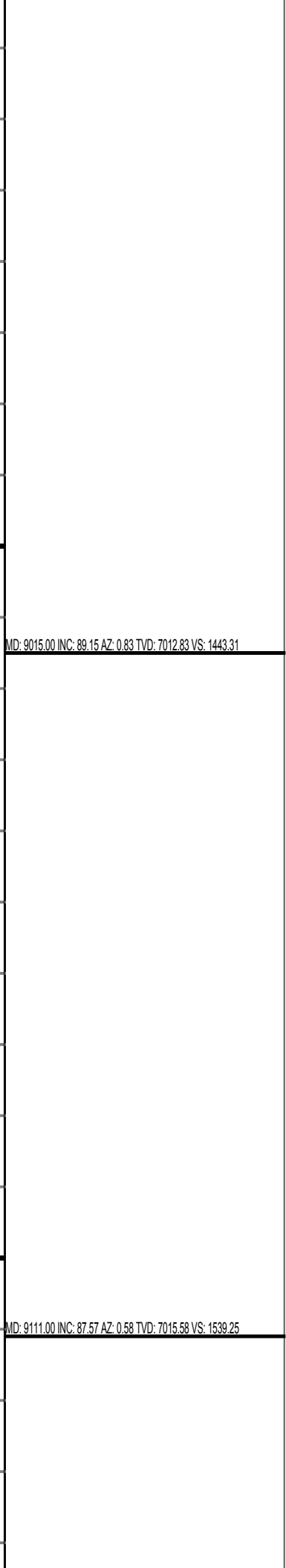
MD: 8444.00 INC: 90.00 AZ: 359.86 TVD: 7016.22 VS: 872.47

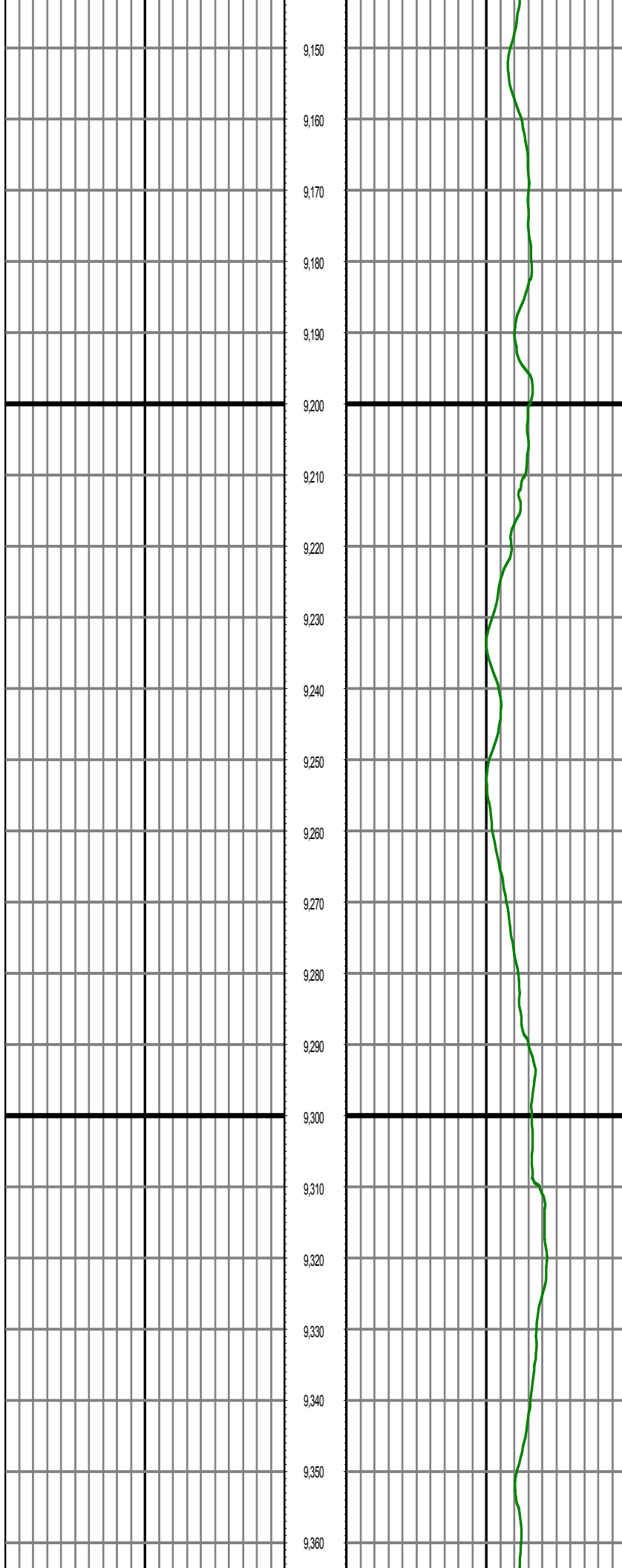


MD: 8539.00 INC: 88.75 AZ: 0.03 TVD: 7017.26 VS: 967.46

MD: 8634.00 INC: 89.24 AZ: 0.25 TVD: 7018.93 VS: 1062.44







MD: 9206.00 INC: 88.02 AZ: 0.30 TVD: 7019.23 VS: 1634.17

MD: 9301.00 INC: 88.53 AZ: 0.11 TVD: 7022.09 VS: 1729.12





MD: 9585.00 INC: 90.03 AZ: 359.30 TVD: 7025.38 VS: 2013.09

9,590

9,600

9,610

9,620

9,630

9,640

9,650

9,660

9,670

9,680

9,690

9,700

9,710

9,720

9,730

9,740

9,750

9,760

9,770

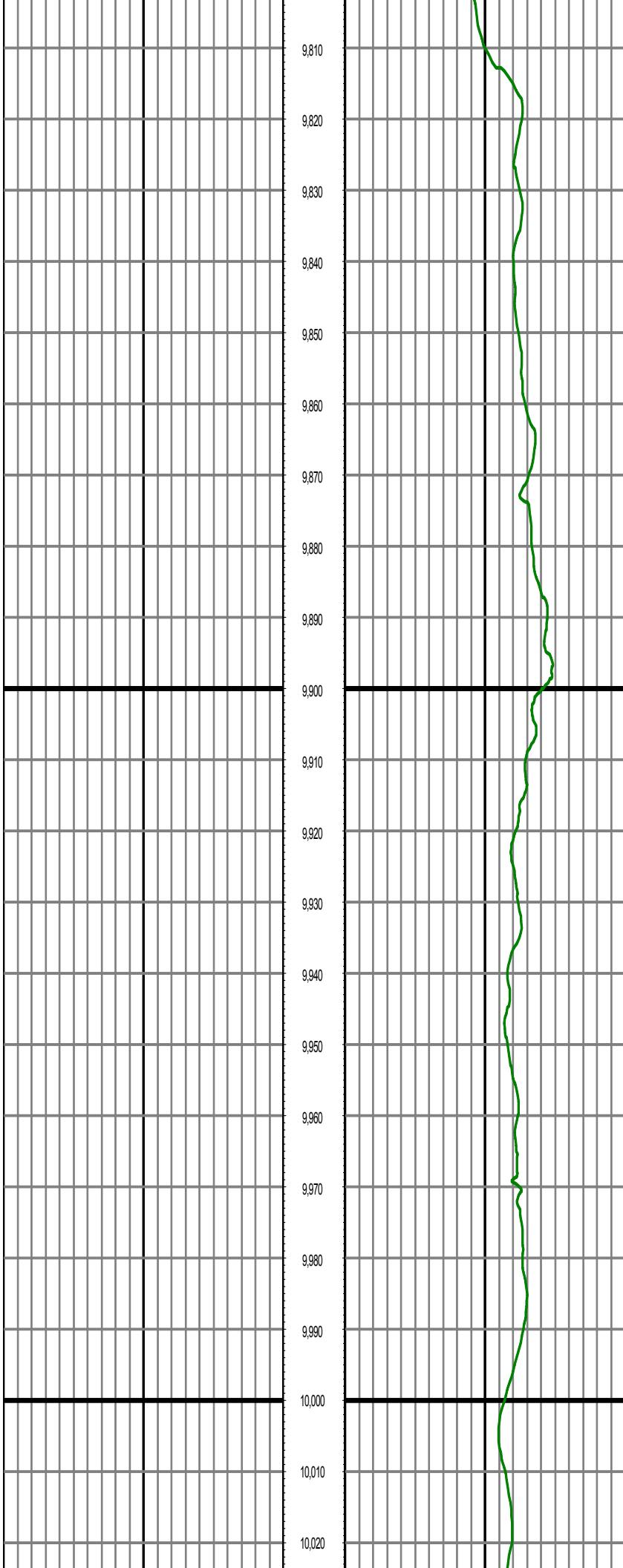
9,780

9,790

9,800

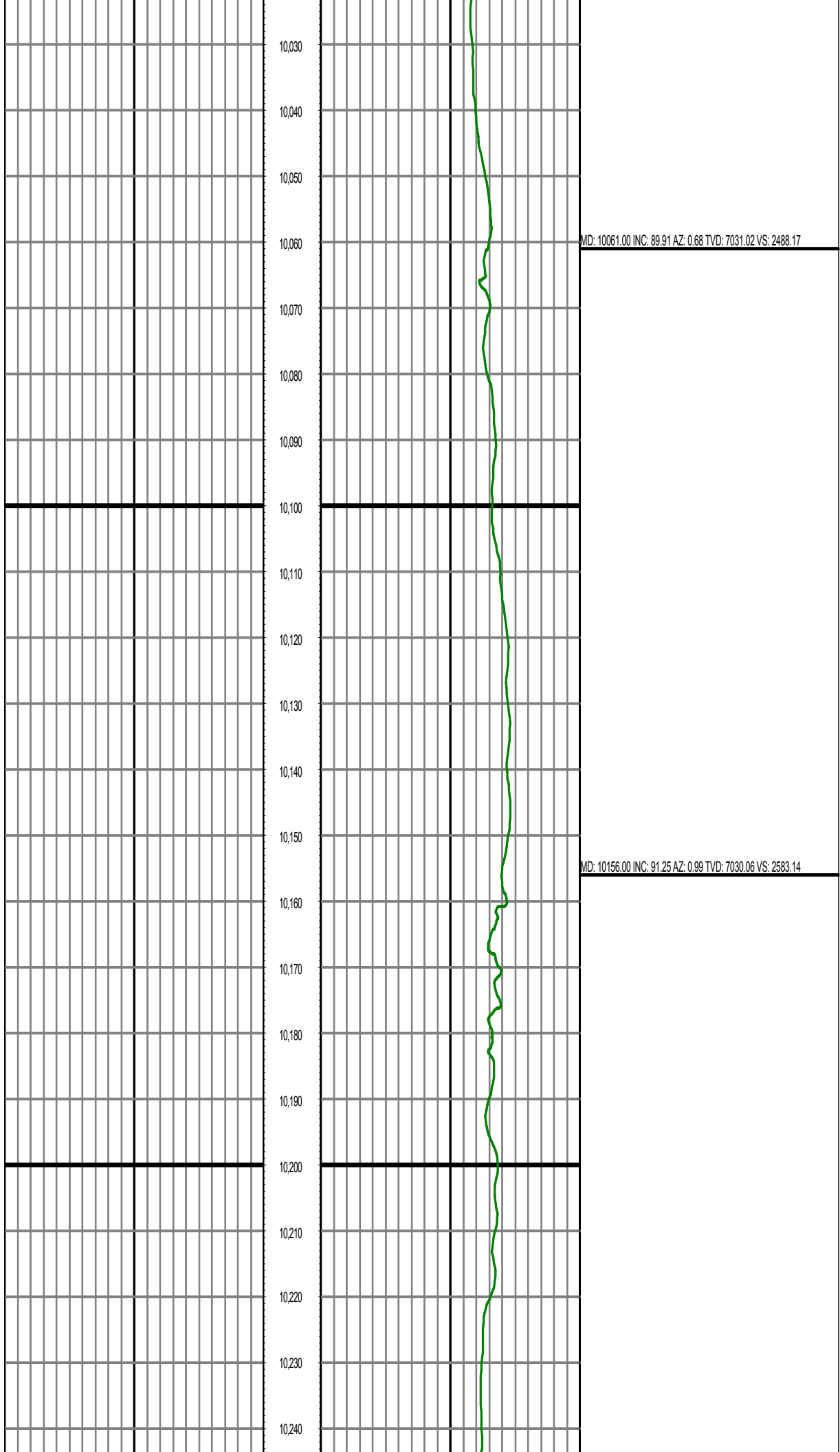
MD: 9680.00 INC: 91.62 AZ: 359.17 TVD: 7024.02 VS: 2108.07

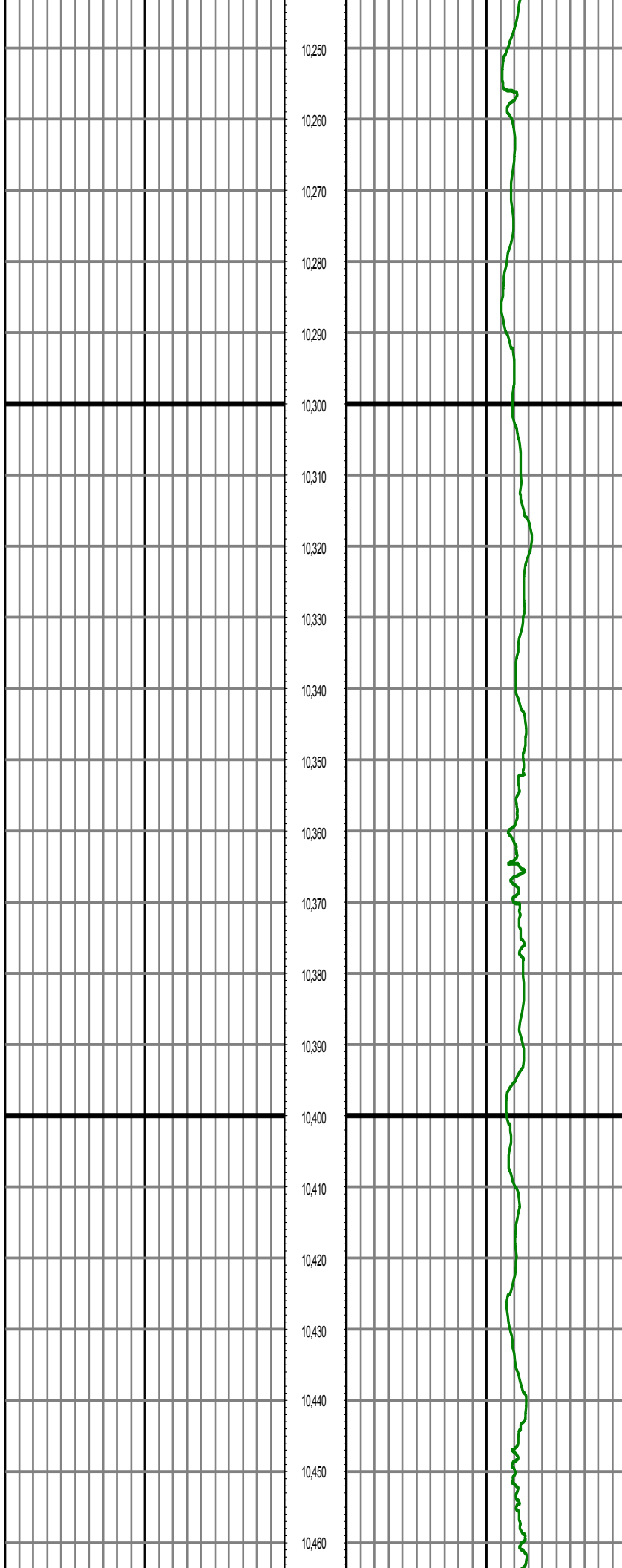
MD: 9775.00 INC: 89.80 AZ: 3.41 TVD: 7022.84 VS: 2203.00



MD: 9871.00 INC: 87.33 AZ: 4.56 TVD: 7025.24 VS: 2298.68

MD: 9965.00 INC: 87.88 AZ: 3.78 TVD: 7029.17 VS: 2392.30

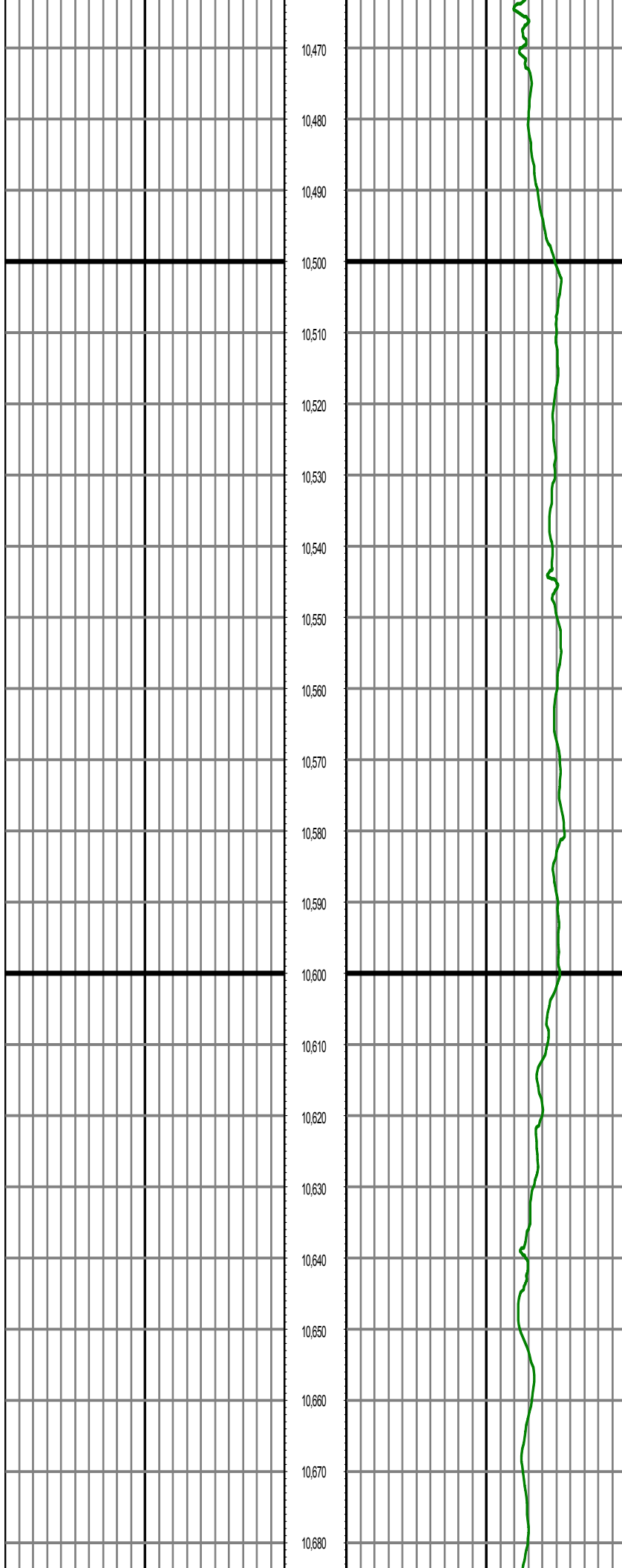




MD: 10251.00 INC: 90.82 AZ: 359.53 TVD: 7028.34 VS: 2678.11

MD: 10346.00 INC: 91.38 AZ: 359.47 TVD: 7026.52 VS: 2773.09

MD: 10441.00 INC: 91.87 AZ: 356.80 TVD: 7023.83 VS: 2868.02



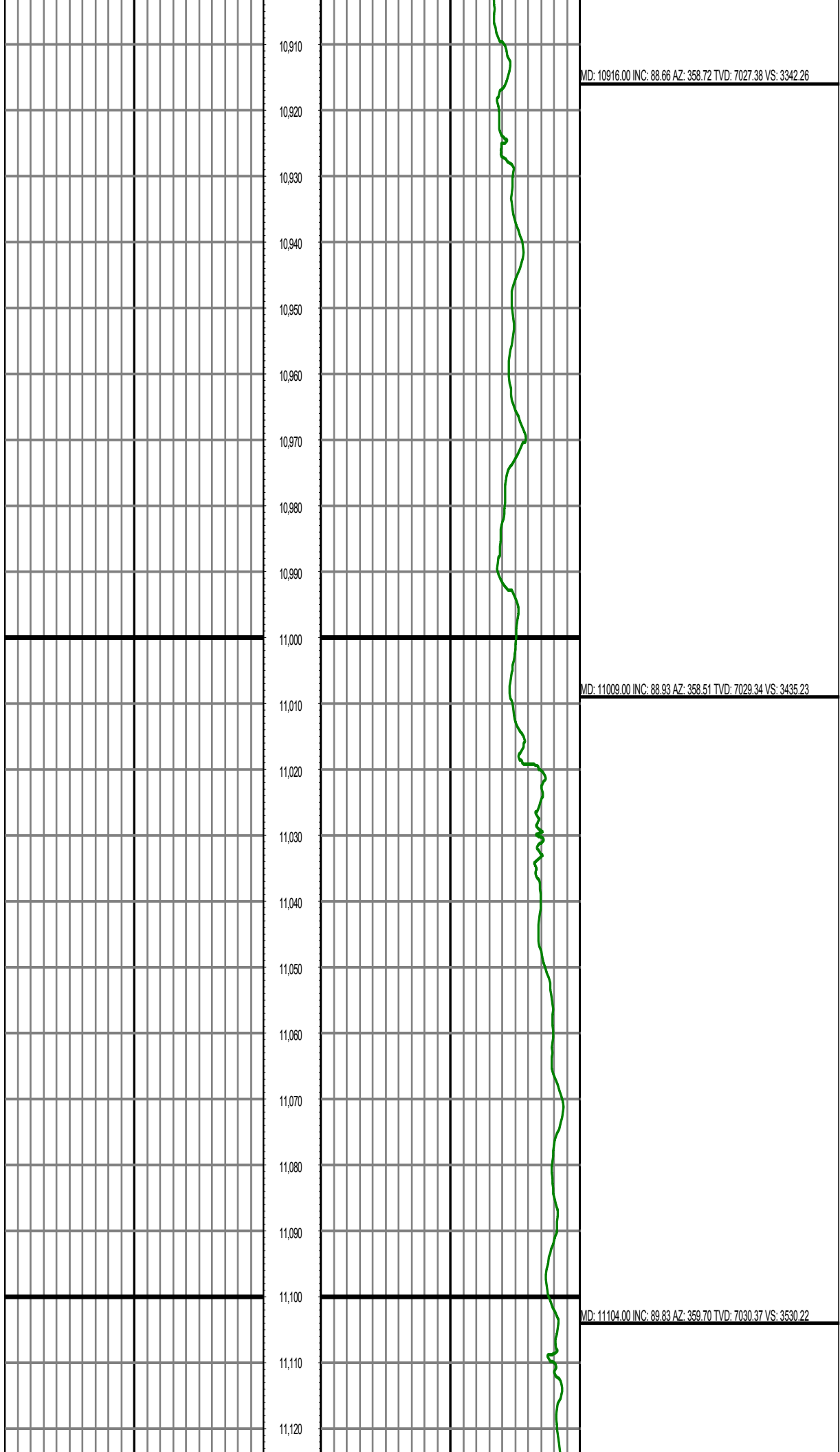
MD: 10536.00 INC: 89.43 AZ: 356.39 TVD: 7022.75 VS: 2962.87

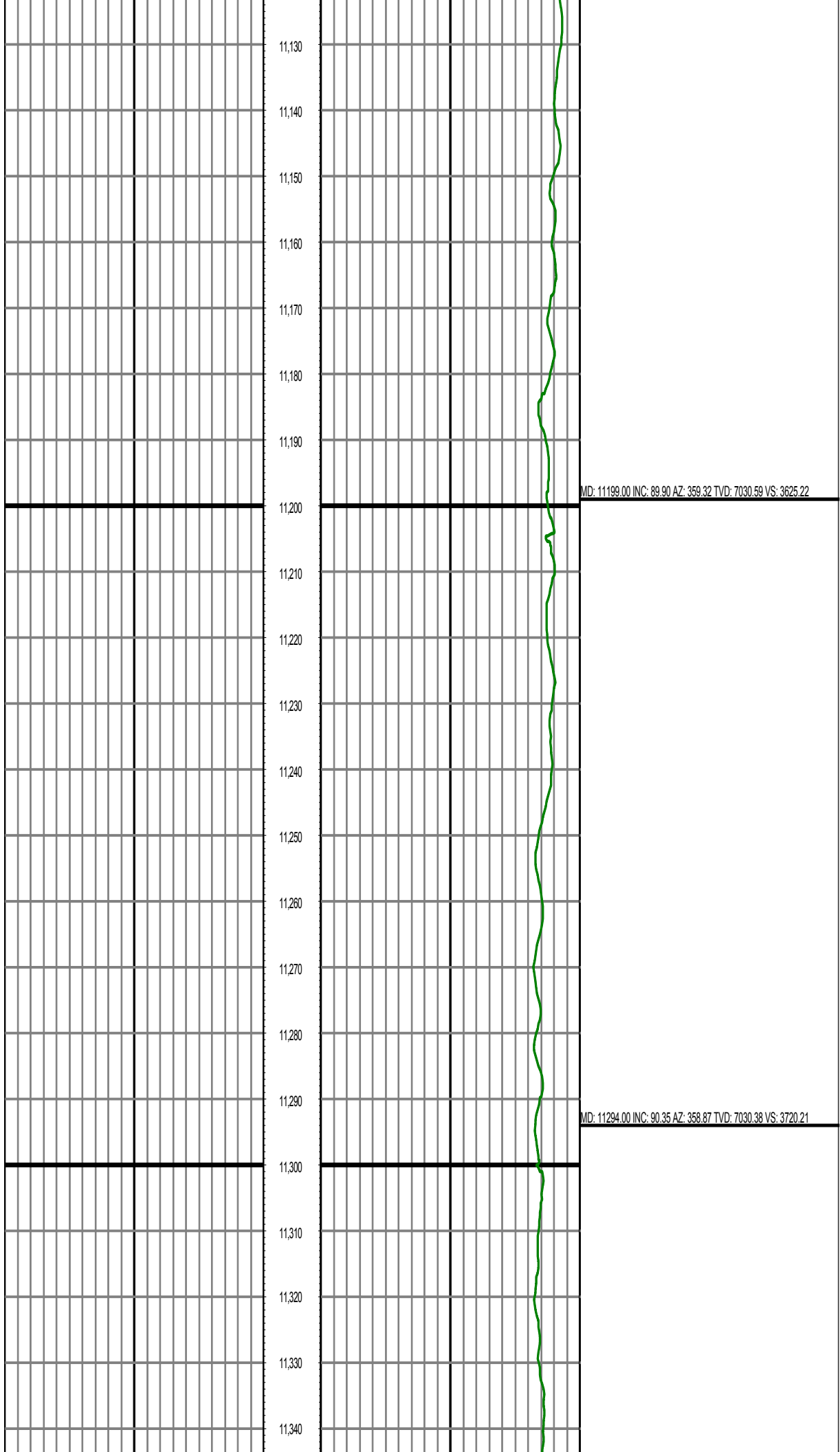
MD: 10631.00 INC: 89.82 AZ: 355.71 TVD: 7023.37 VS: 3057.68



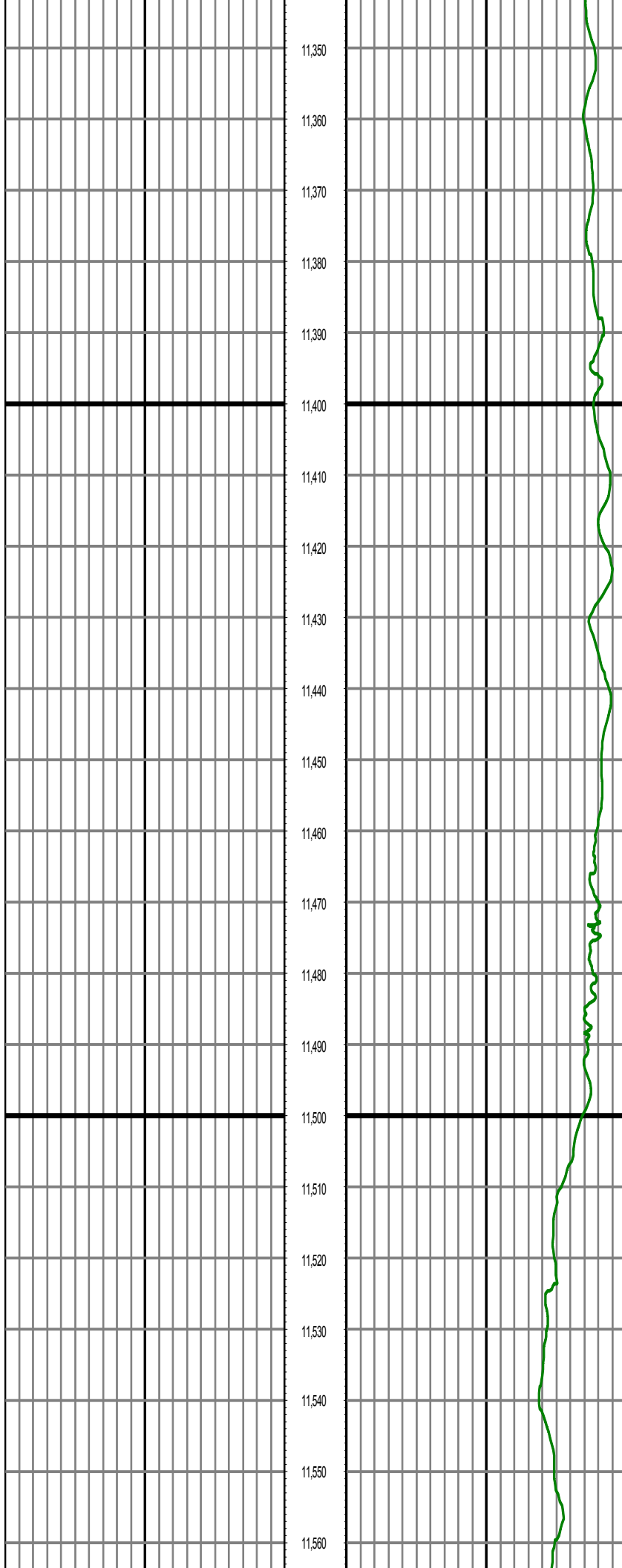
MD: 10726.00 INC: 89.89 AZ: 355.23 TVD: 7023.61 VS: 3152.44

MD: 10821.00 INC: 88.45 AZ: 358.67 TVD: 7024.99 VS: 3247.31



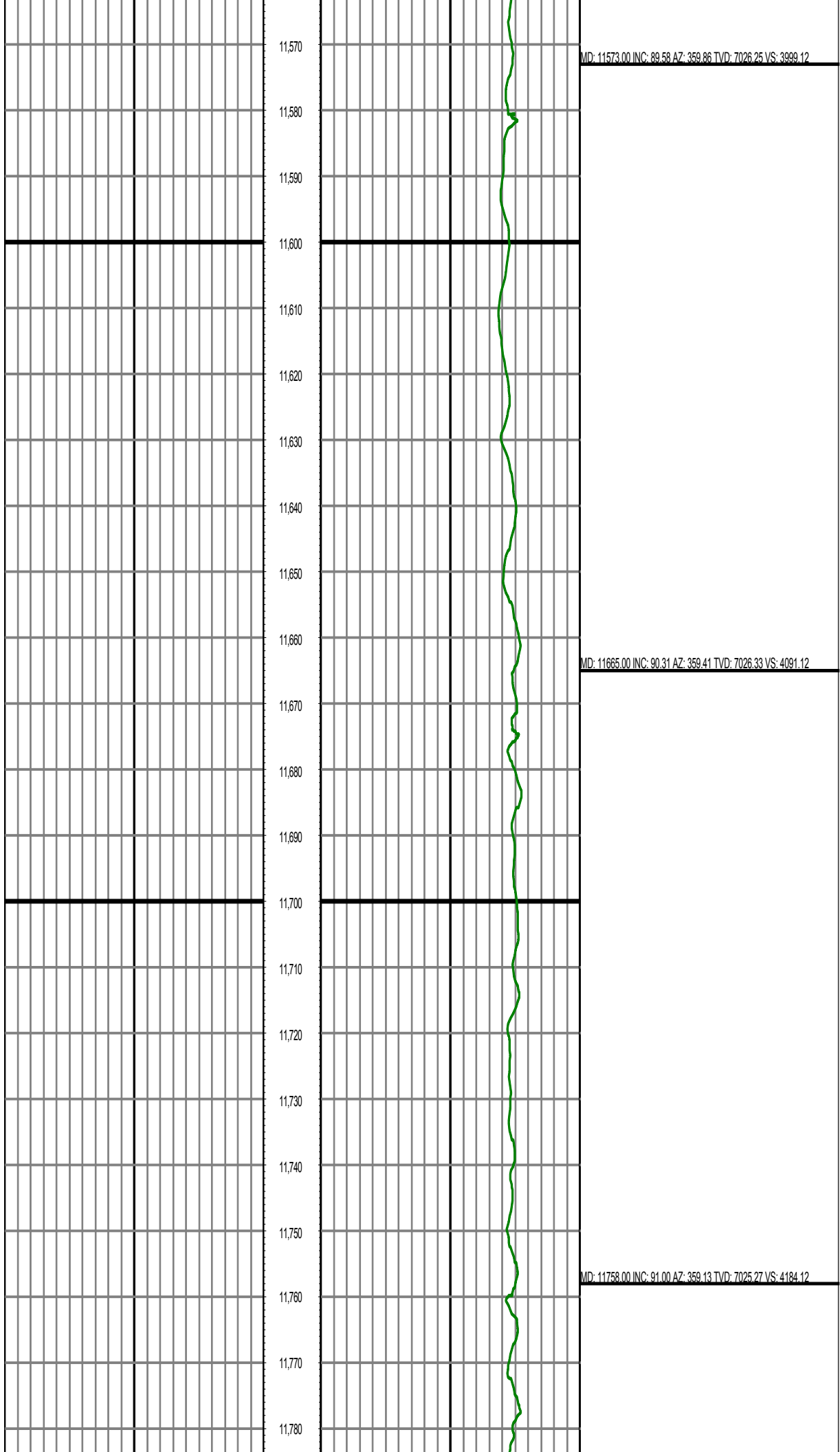


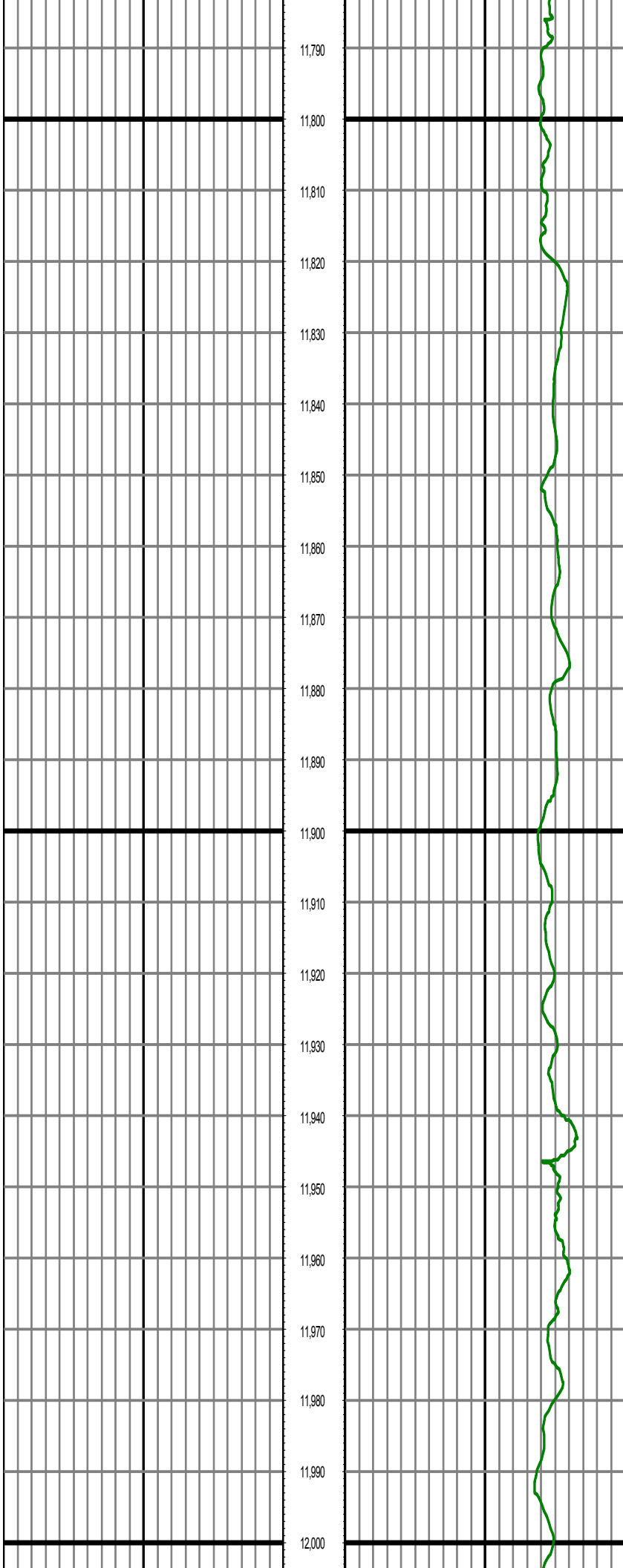




MD: 11388.00 INC: 90.95 AZ: 358.47 TVD: 7029.32 VS: 3814.19

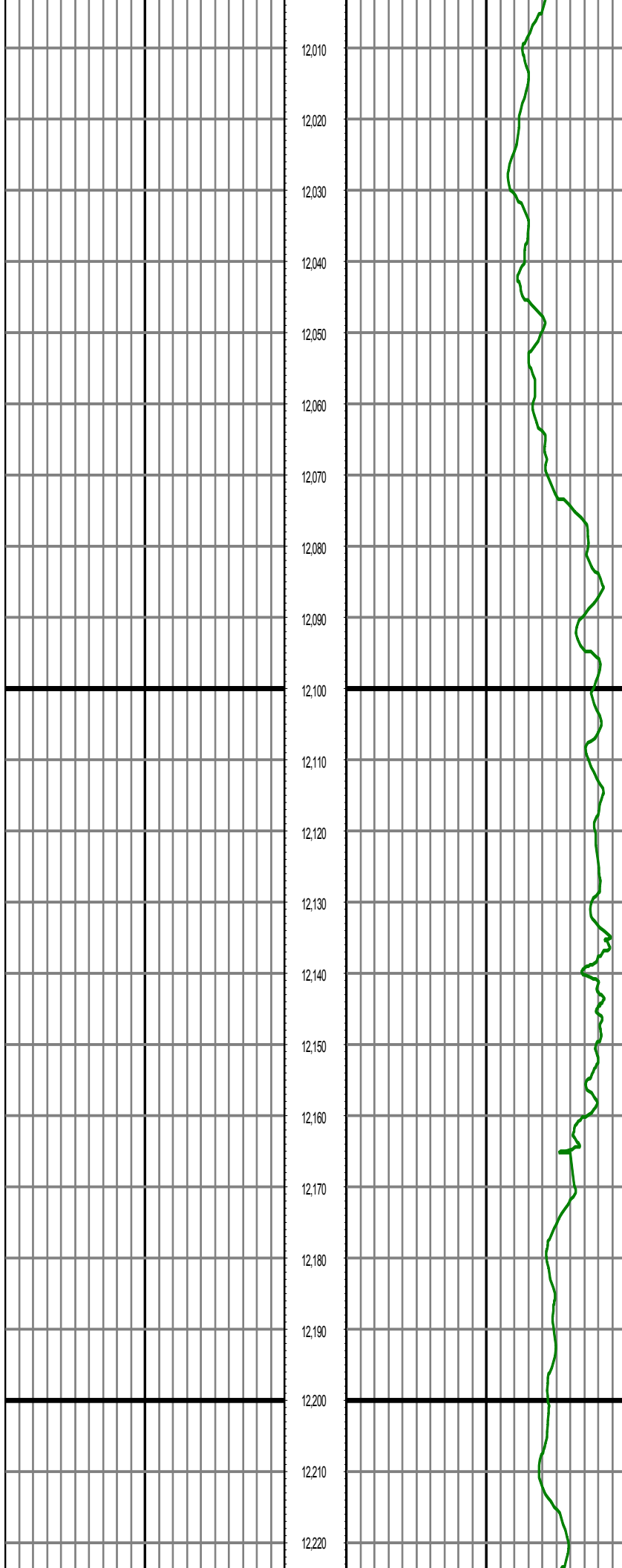
MD: 11480.00 INC: 91.64 AZ: 358.08 TVD: 7027.24 VS: 3906.14





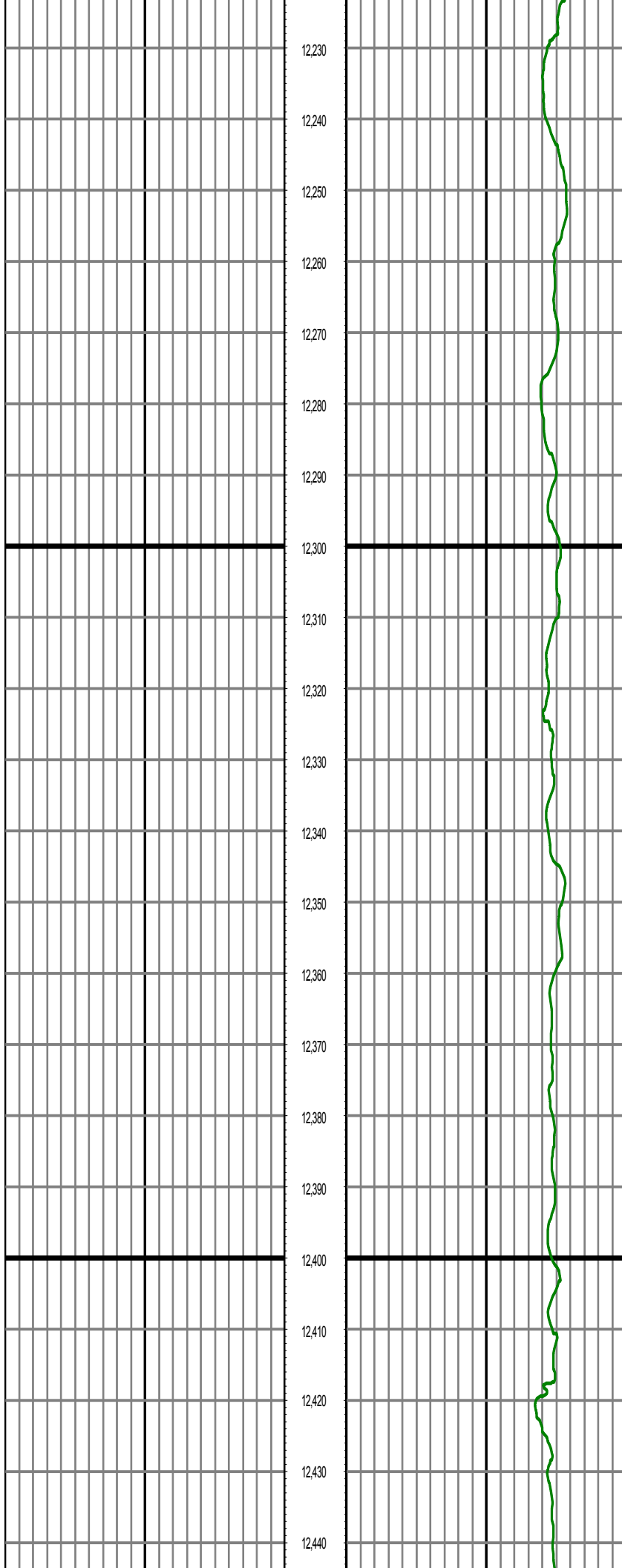
MD: 11851.00 INC: 91.55 AZ: 359.34 TVD: 7023.20 VS: 4277.09

MD: 11945.00 INC: 89.85 AZ: 359.87 TVD: 7022.05 VS: 4371.08



MD: 12038.00/INC: 90.56 AZ: 359.83 TVD: 7021.72 VS: 4464.08

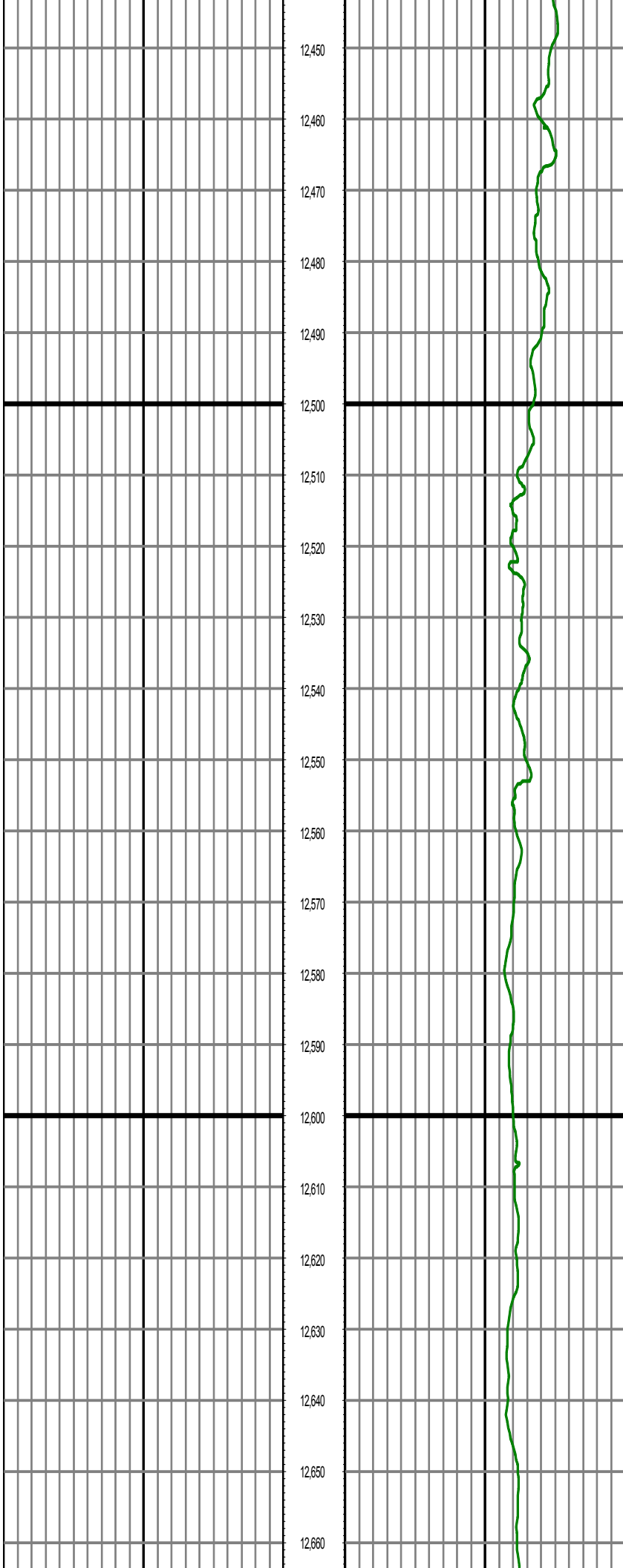
MD: 12133.00/INC: 90.98 AZ: 359.22 TVD: 7020.44 VS: 4559.07



MD: 12227.00 INC: 89.70 AZ: 0.84 TVD: 7019.89 VS: 4653.06

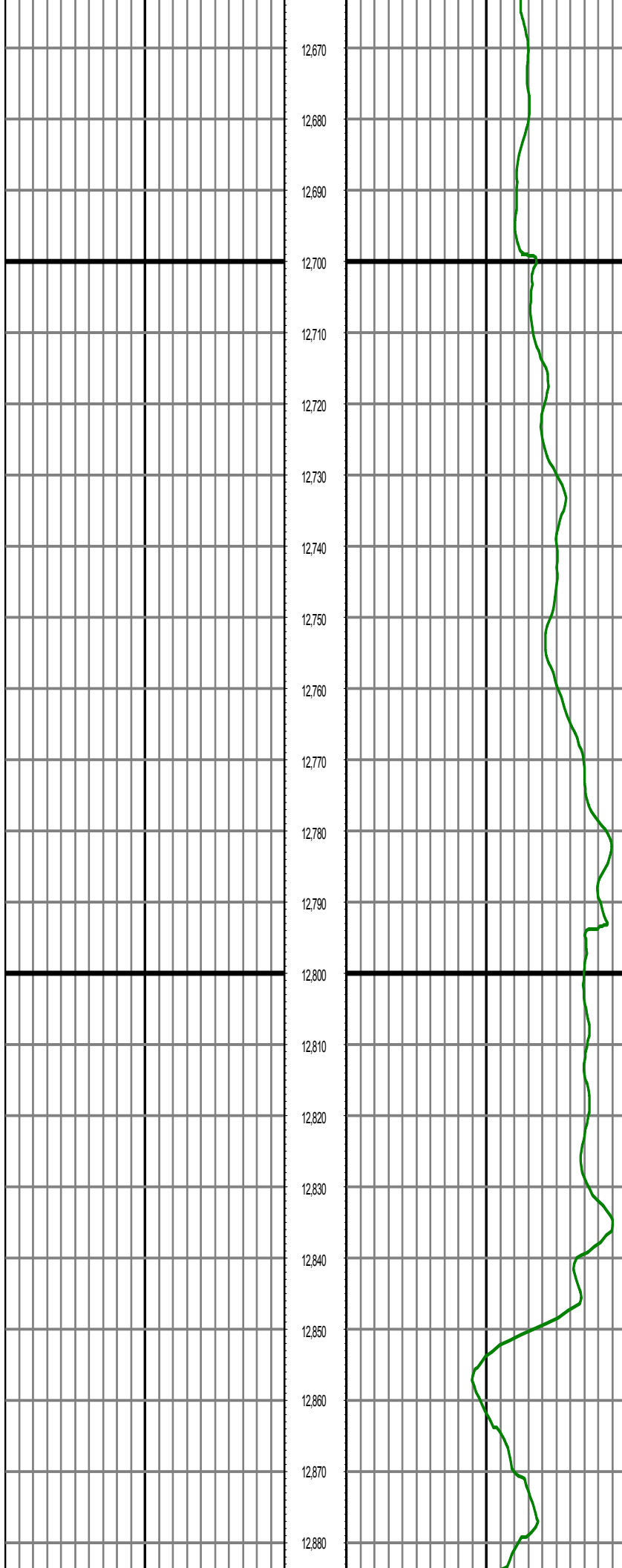
MD: 12320.00 INC: 89.73 AZ: 1.05 TVD: 7020.35 VS: 4746.03

MD: 12416.00 INC: 90.47 AZ: 0.96 TVD: 7020.18 VS: 4842.00



MD: 12510.00 INC: 91.48 AZ: 0.70 TVD: 7018.58 VS: 4935.97

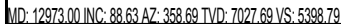
MD: 12603.00 INC: 89.34 AZ: 0.41 TVD: 7017.92 VS: 5028.95



MD: 12696.00 INC: 88.07 AZ: 359.21 TVD: 7020.02 VS: 5121.92

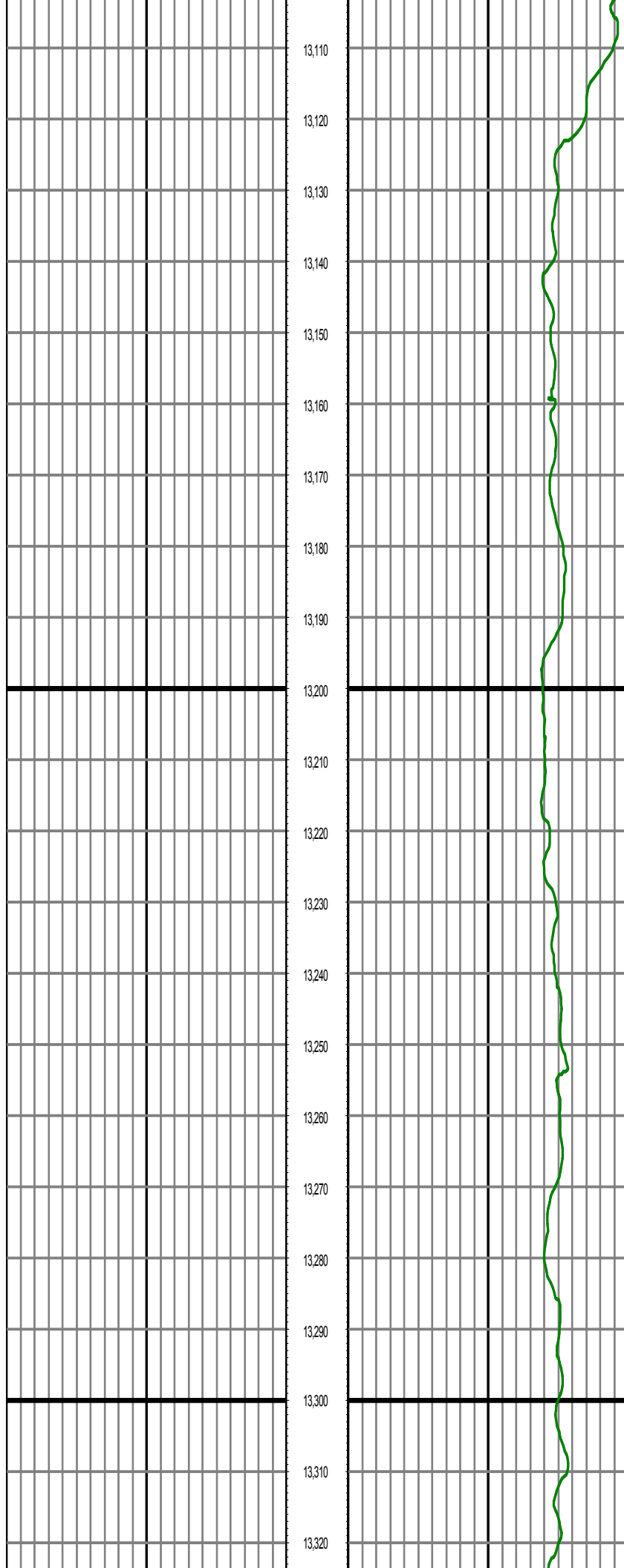
MD: 12788.00 INC: 88.33 AZ: 358.92 TVD: 7022.91 VS: 5213.87

MD: 12881.00 INC: 88.56 AZ: 358.88 TVD: 7025.43 VS: 5306.83



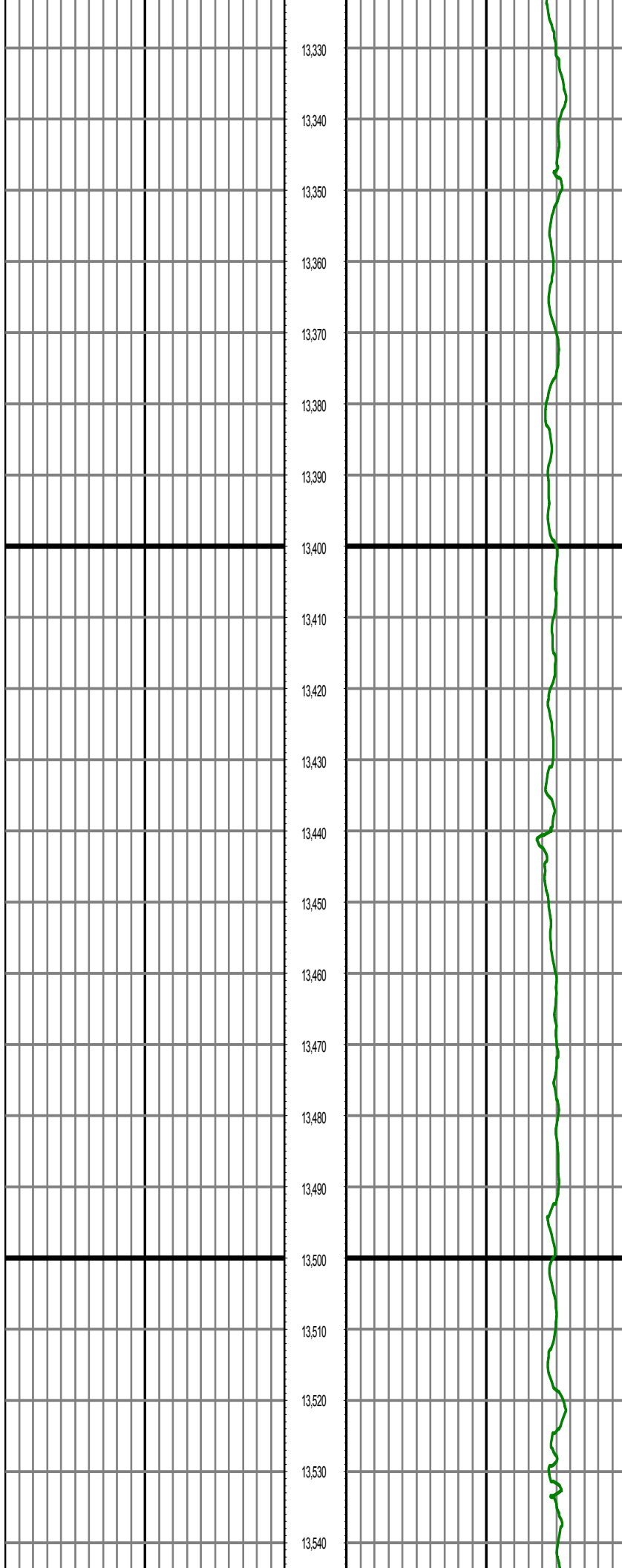
MD: 13066.00 INC: 88.96 AZ: 358.21 TVD: 7029.64 VS: 5491.75





MD: 13158.00 INC: 88.93 AZ: 0.06 TVD: 7031.34 VS: 5583.73

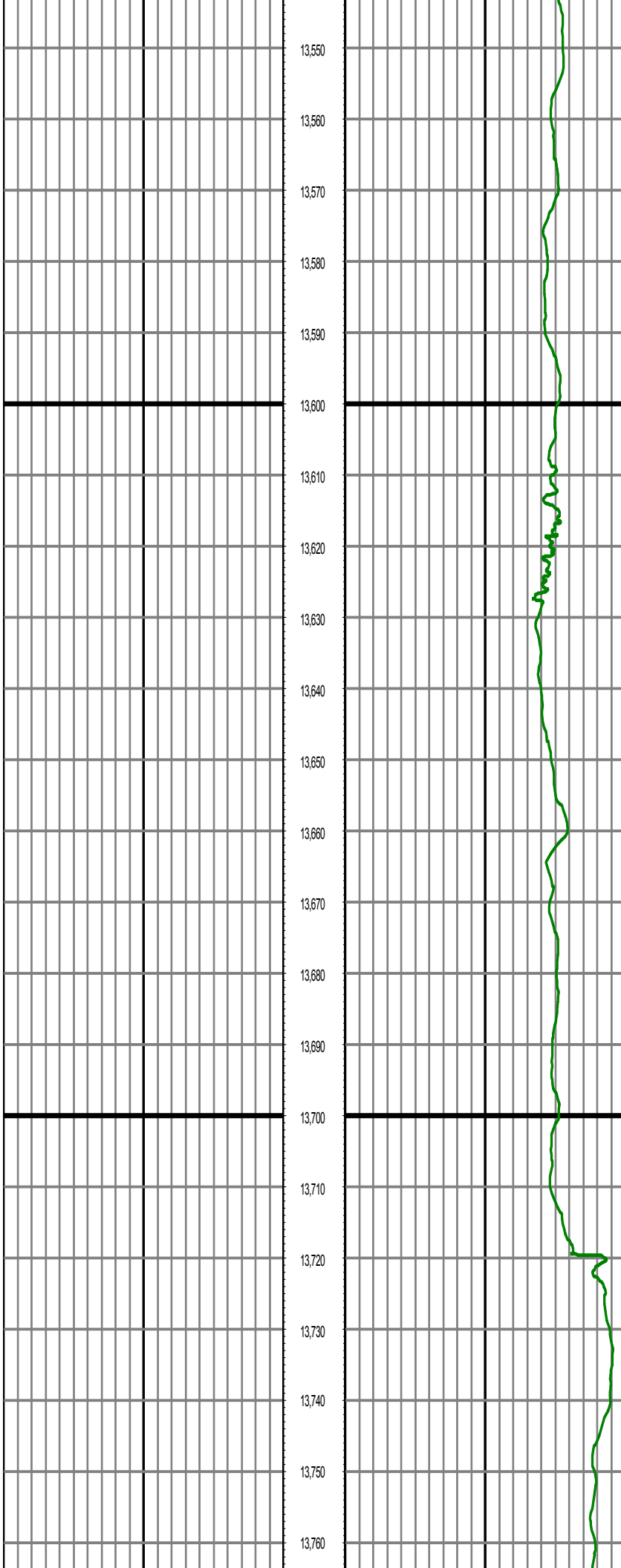
MD: 13251.00 INC: 89.13 AZ: 0.78 TVD: 7032.91 VS: 5676.70



MD: 13343.00 INC: 89.68 AZ: 0.31 TVD: 7033.87 VS: 5768.69

MD: 13436.00 INC: 90.80 AZ: 0.70 TVD: 7033.48 VS: 5861.67

MD: 13529.00 INC: 91.55 AZ: 0.80 TVD: 7031.57 VS: 5954.63



13,550

13,560

13,570

13,580

13,590

13,600

13,610

13,620

13,630

13,640

13,650

13,660

13,670

13,680

13,690

13,700

13,710

13,720

13,730

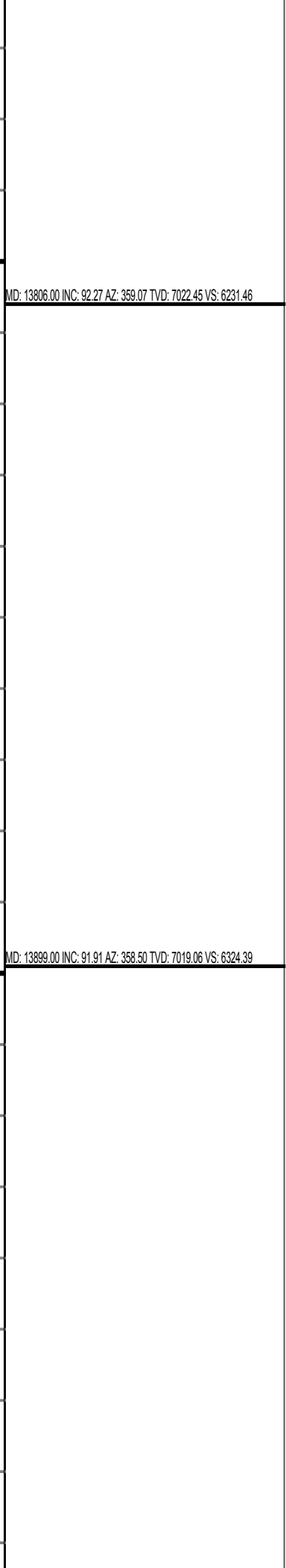
13,740

13,750

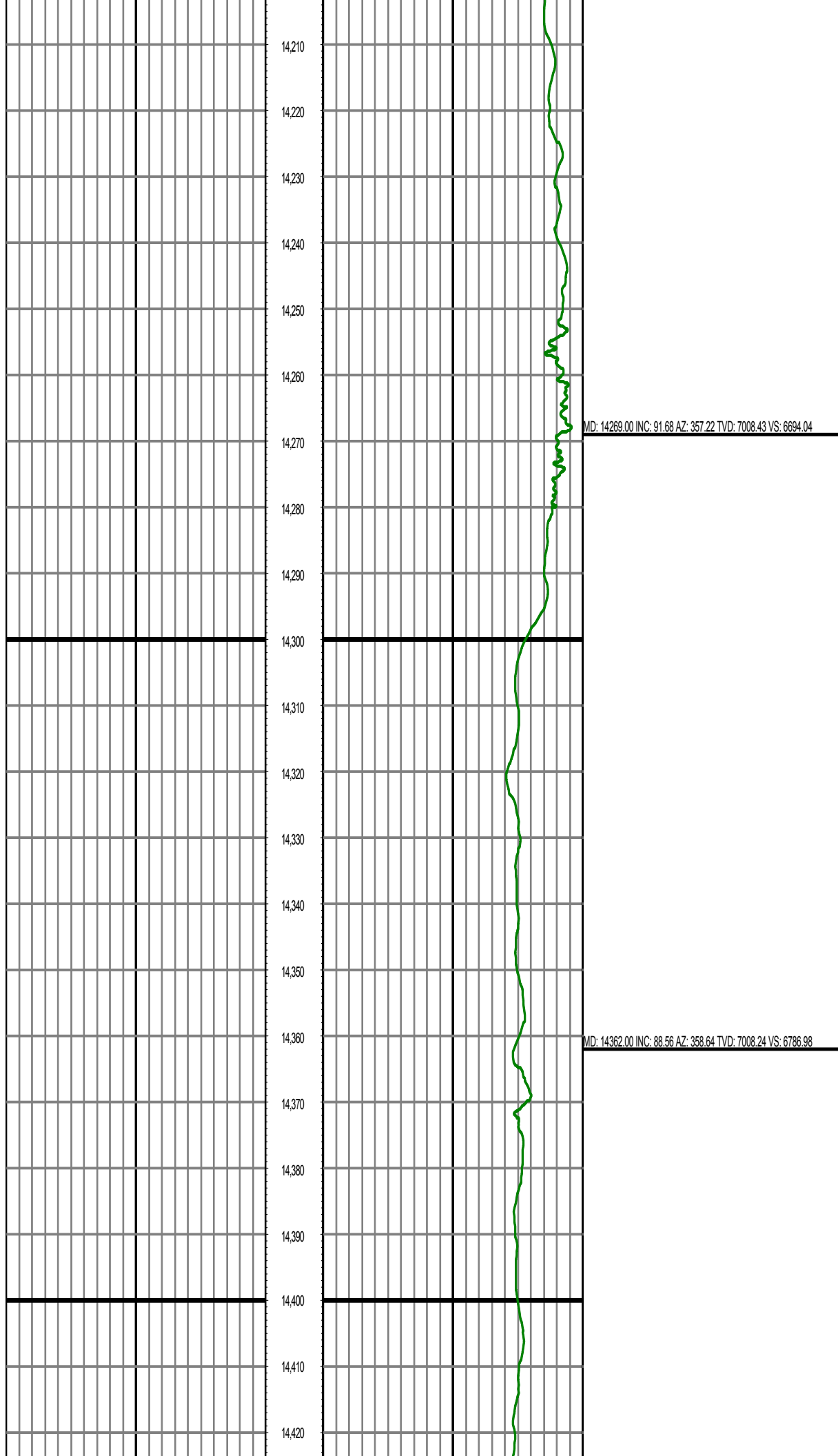
13,760

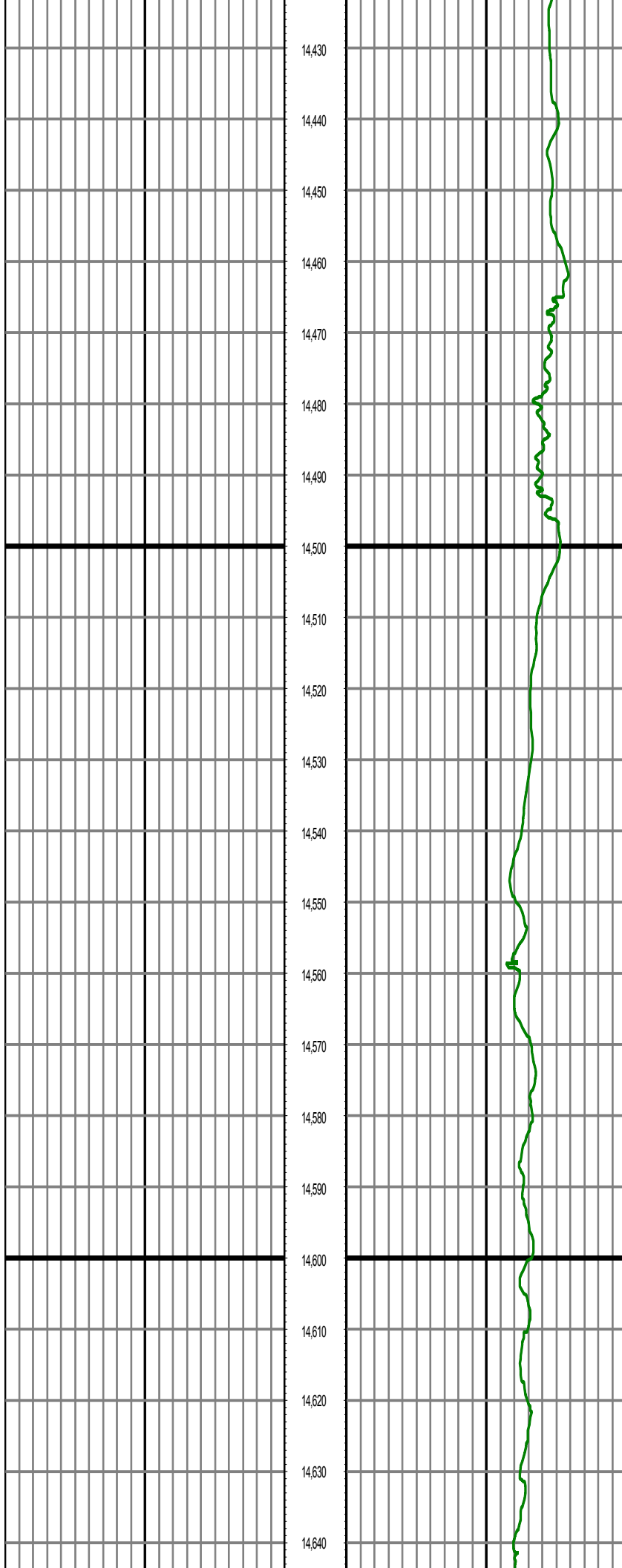
MD: 13621.00 INC: 92.23 AZ: 0.36 TVD: 7028.54 VS: 6046.57

MD: 13714.00 INC: 91.52 AZ: 359.14 TVD: 7025.49 VS: 6139.52





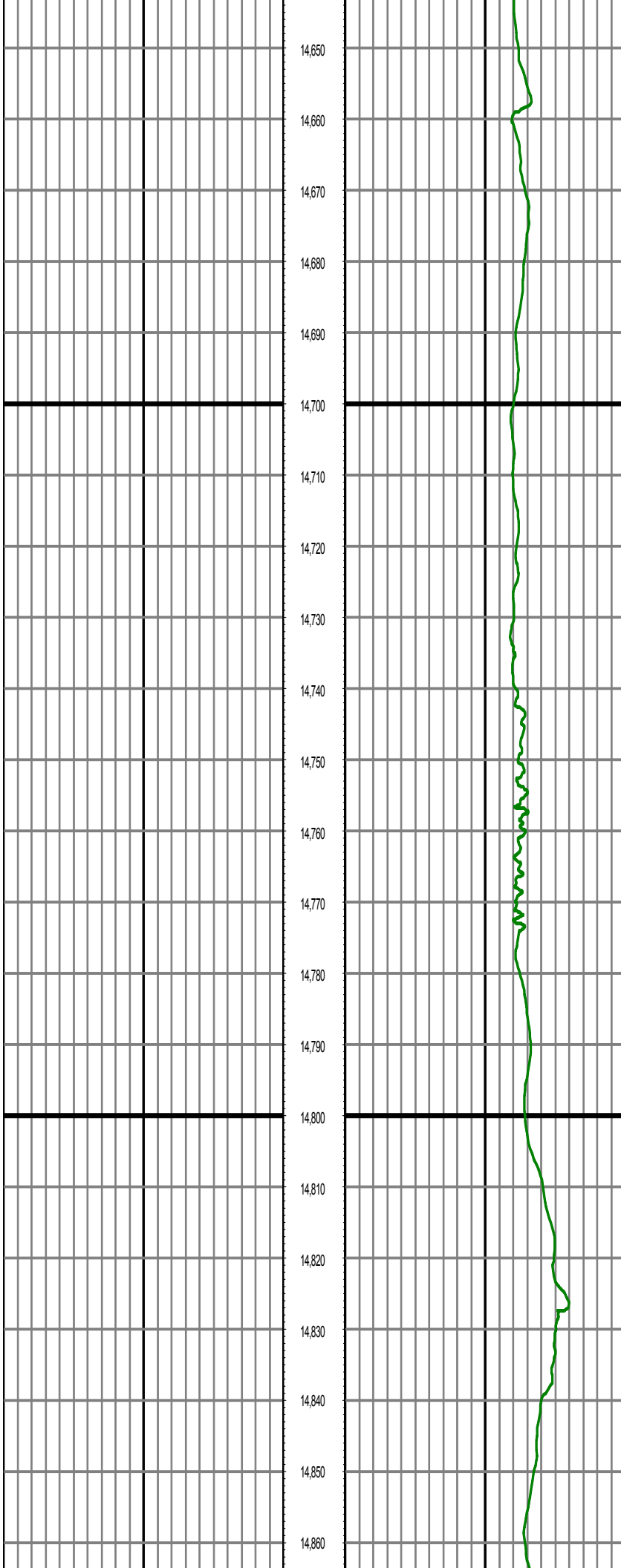




MD: 14454.00 INC: 89.27 AZ: 358.12 TVD: 7009.98 VS: 6878.94

MD: 14547.00 INC: 90.04 AZ: 1.28 TVD: 7010.54 VS: 6971.93

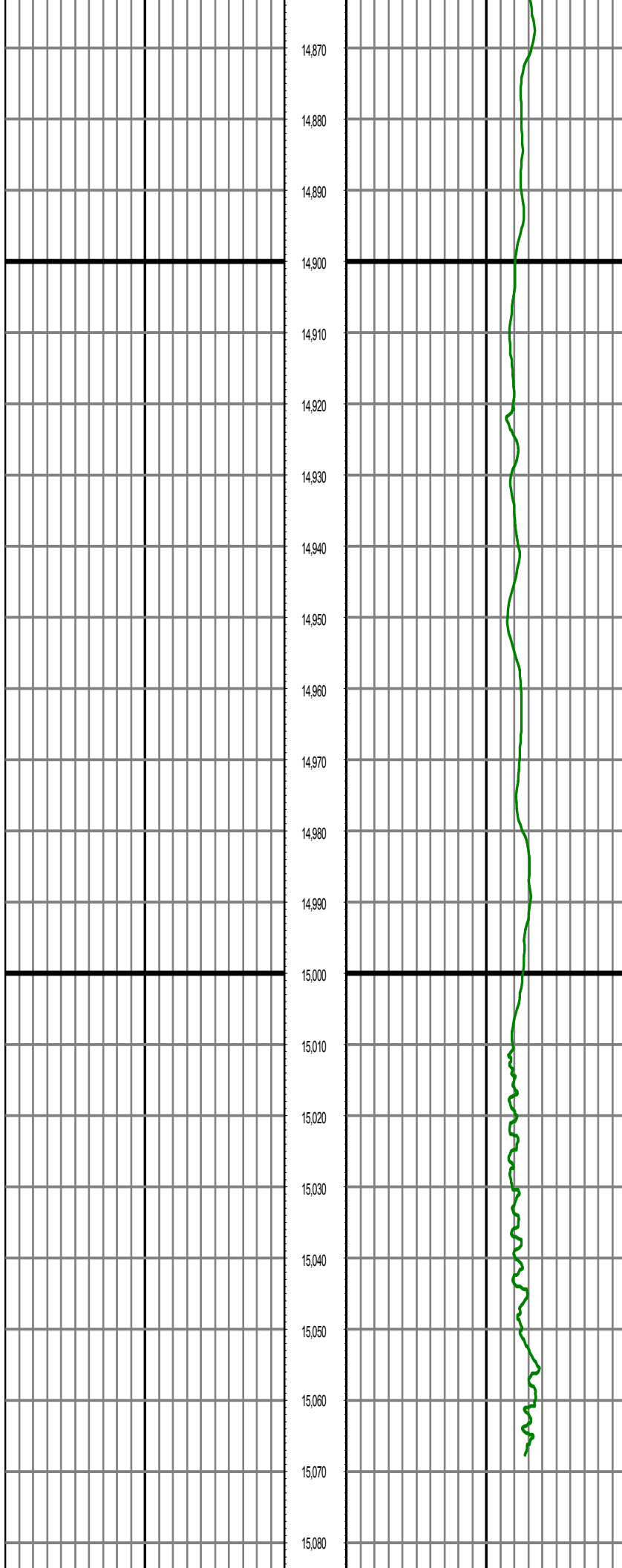
MD: 14639.00 INC: 90.22 AZ: 1.54 TVD: 7010.33 VS: 7063.88



MD: 14732.00 INC: 91.38 AZ: 1.57 TVD: 7009.03 VS: 7156.82

MD: 14824.00 INC: 89.53 AZ: 1.00 TVD: 7008.30 VS: 7248.77





MD: 14917.00 INC: 88.74 AZ: 0.13 TVD: 7009.71 VS: 7341.75

MD: 15009.00 INC: 89.03 AZ: 359.68 TVD: 7011.50 VS: 7433.73

MD: 15063.00 INC: 89.23 AZ: 359.21 TVD: 7012.32 VS: 7487.72

