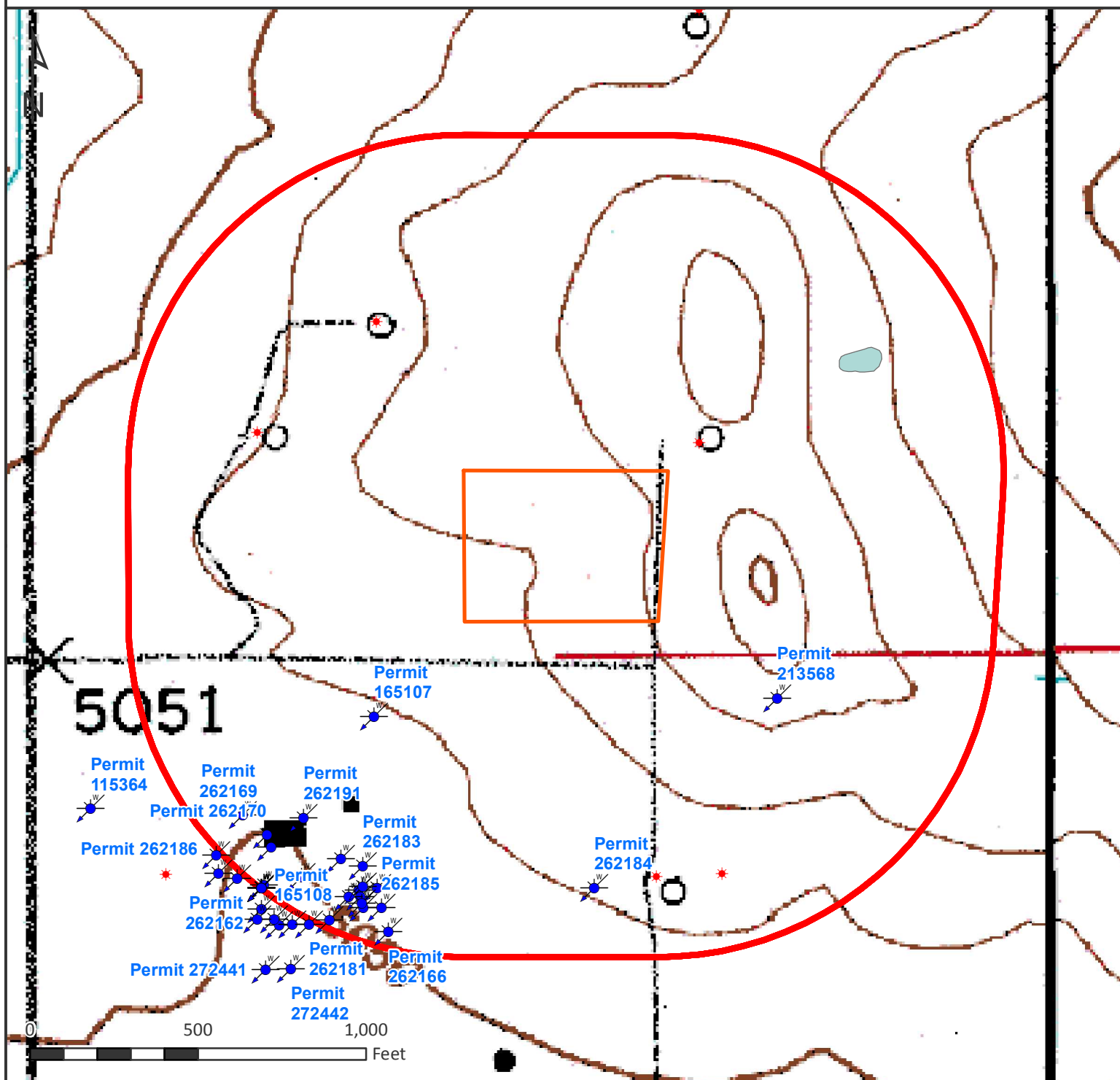


# HYDROLOGY MAP JZM 3N-W3HZ








## Nearest Surface Water Feature

Pond: 602' ENE Elev: 5078'  
Loc Elev: 5082'

All measurements are made from  
edge of disturbed area.

## Legend

-  Water Well
-  1000' buffer
-  Well pad (proposed)
-  Existing oil/gas well (COGCC)
-  Man-made pond



Date created: 11/9/2015  
Created by: APC Regulatory GIS  
Scale: 1:5,000  
Projection: NAD83 UTM 13N