

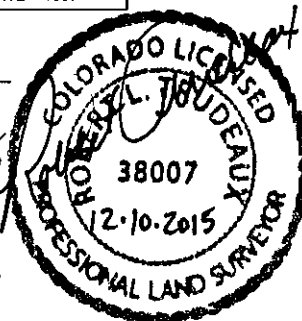
SURVEY NOTES

SOUTHERN UTE TRIBAL BK 2	CSZ NAD'83	NAD'83	TIES	ELEVATION
PROPOSED SURFACE HOLE LOCATION (SHL)	N (Y) = 1,154,165.30' E (X) = 2,379,483.07'	LAT. = 37.07065237°N LON. = 107.62690371°W	FSL = 1013' FEL = 1078'	EXISTING GROUND 6398.57'
PROPOSED TOP OF PRODUCTION (TOP)	N (Y) = 1,154,115.01' E (X) = 2,381,270.17'	LAT. = 37.07062587°N LON. = 107.62077639°W	FSL = 1022' FWL = 710'	PROPOSED GRADE 6397.35'
PROPOSED BOTTOM HOLE LOCATION (BHL)	N (Y) = 1,154,104.12' E (X) = 2,381,656.88'	LAT. = 37.07062008°N LON. = 107.61945050°W	FSL = 1023' FWL = 1097'	

1. BEARING BASIS FOR THIS SURVEY IS BASED ON THE NORTH AMERICAN DATUM OF 1983, COLORADO STATE PLANE COORDINATE SYSTEM, COLORADO SOUTH, ZONE 0503.
2. ELEVATION BASIS FOR THIS SURVEY IS BASED ON THE NORTH AMERICAN VERTICAL DATUM OF 1988 (GEOID12A).
3. SURVEYED IN THE FIELD ON 10/06/2015.
4. BEARINGS AND DISTANCE SHOWN ARE MEASURED IN THE FIELD UNLESS OTHERWISE NOTED.
5. ALL MEASURED DISTANCES SHOWN ARE GRID USING A COMBINED SCALE FACTOR 0.99972477.
6. GPS INSTRUMENT OPERATOR: BRIAN BONIFACE
7. GPS PDOP VALUE: 2.1

SURVEYOR'S CERTIFICATE

I, ROBERT L. TRUDEAUX, A PROFESSIONAL LAND SURVEYOR IN THE STATE OF COLORADO, DO HEREBY CERTIFY THAT THIS PLAT WAS PREPARED FROM AN ACTUAL SURVEY PERFORMED BY ME OR UNDER MY DIRECT RESPONSIBILITY, SUPERVISION AND CHECKING, AND IS TRUE AND CORRECT TO THE BEST OF MY KNOWLEDGE AND BELIEF BASED ON THE STANDARDS OF CARE OF PROFESSIONAL LAND SURVEYORS PRACTICING IN THE STATE OF COLORADO. THIS DOES NOT REPRESENT A LAND SURVEY PLAT, IMPROVEMENT SURVEY PLAT, OR MONUMENTED LAND SURVEY AS DEFINED BY COLORADO REVISED STATUTES 38-51-102 AND CANNOT BE RELIED UPON TO DETERMINE OWNERSHIP. THIS SURVEY IS NOT A GUARANTY OR WARRANTY, EITHER EXPRESSED OR IMPLIED.

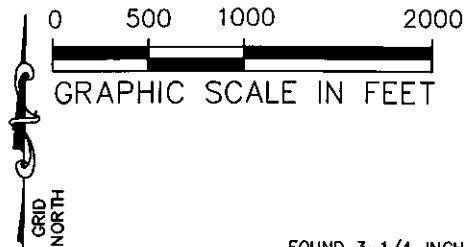


BP AMERICA
PRODUCTION COMPANY
US LOWER 48 ONSHORE

WELL LOCATION PLAT

SOUTHERN UTE TRIBAL BK 2
PART OF
SECTION 28 AND 29, TOWNSHIP 33N,
RANGE 07W, N.M.P.M.
LA PLATA COUNTY, COLORADO

DRAWN BY CFW/RLM	CHECKED BY RLT	SCALE 1"=1000'	DATE 12/10/2015	SHEET 1 OF 2	REVISION
---------------------	-------------------	-------------------	--------------------	-----------------	----------

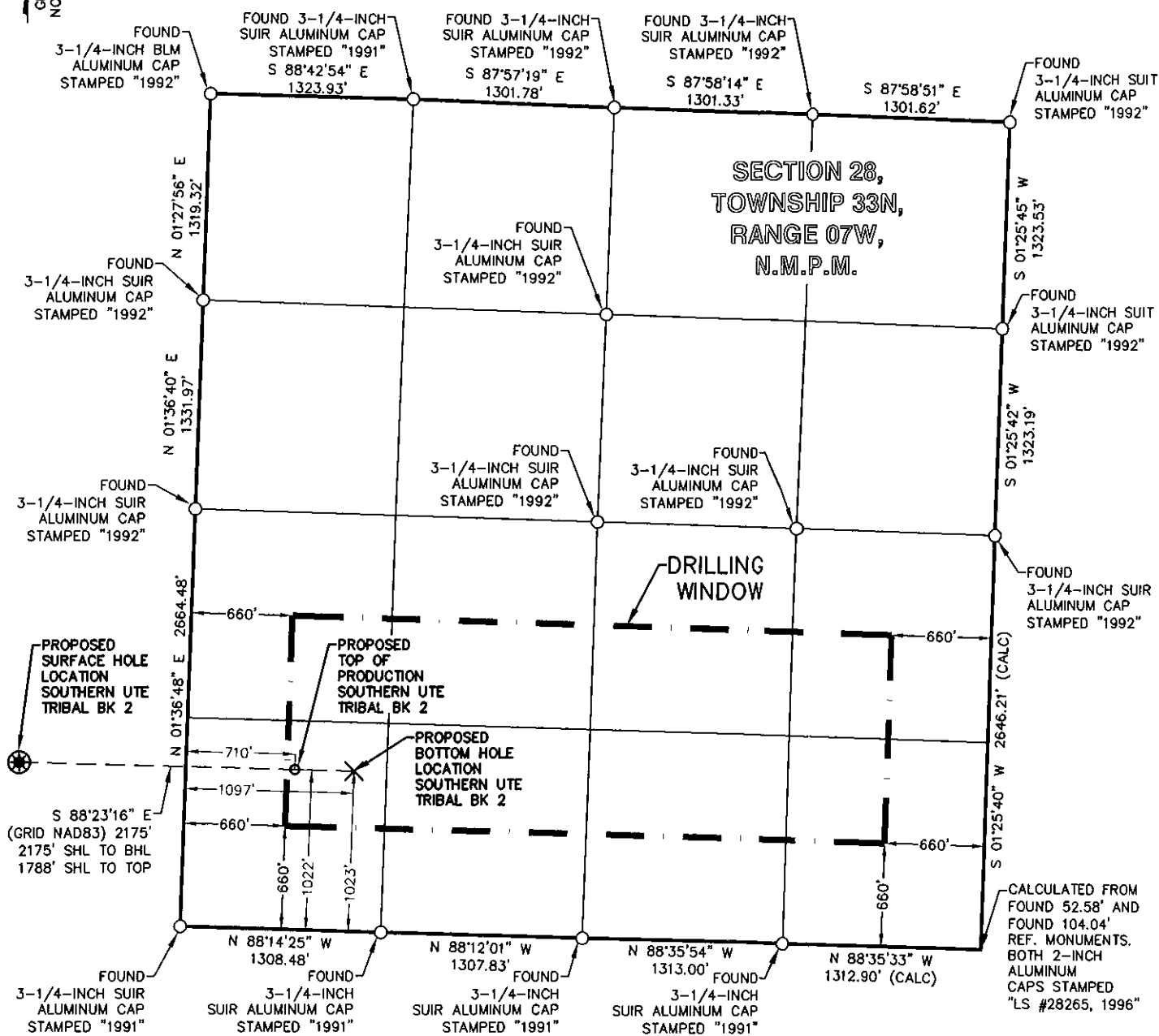


LEGEND

FOUND MONUMENT O

PROPOSED SURFACE HOLE LOCATION *

PROPOSED BOTTOM HOLE LOCATION X



SOUTHERN UTE TRIBAL BK 2	CSZ NAD'83	NAD'83	TIES	ELEVATION
PROPOSED SURFACE HOLE LOCATION (SHL)	N (Y) = 1,154,165.30' E (X) = 2,379,483.07'	LAT. = 37.07065237°N LON. = 107.62690371°W	FSL = 1013' FEL = 1078'	EXISTING GROUND 6398.57'
PROPOSED TOP OF PRODUCTION (TOP)	N (Y) = 1,154,115.01' E (X) = 2,381,270.17'	LAT. = 37.07062587°N LON. = 107.62077639°W	FSL = 1022' FWL = 710'	PROPOSED GRADE 6397.35'
PROPOSED BOTTOM HOLE LOCATION (BHL)	N (Y) = 1,154,104.12' E (X) = 2,381,656.88'	LAT. = 37.07062008°N LON. = 107.61945050°W	FSL = 1023' FWL = 1097'	



BP AMERICA
PRODUCTION COMPANY
US LOWER 48 ONSHORE

WELL LOCATION PLAT

SOUTHERN UTE TRIBAL BK 2

PART OF
SECTION 28 AND 29, TOWNSHIP 33N,
RANGE 07W, N.M.P.M.
LA PLATA COUNTY, COLORADO

DRAWN BY
CFW/RLM

CHECKED BY
RLT

SCALE
1"=1000'

DATE
12/10/2015

SHEET
2 OF 2

REVISION