

Measured Depth Log

5"=100ft
Feet

Oil Co: Well Name: LSD: State/Prov: Country: Job #:				Bonanza Creek Energy State Pronghorn X-D-29HNC Colorado USA 2015-007-25			
Oil Company: Well Name: LSD: State/Prov: Country: Job #: Drilling Co: Rig #: Co Rep 1: Co Rep 2: Geologist 1: Geologist 2: DD 1: DD 2: MWD 1: MWD 2: MWD Kit:				Bonanza Creek Energy State Pronghorn X-D-29HNC Colorado USA 2015-007-25 Cade 25 Gary Joe Tanner Chris Tim Sinning Tyson Speer			
Well Lic: API/UWI: AFE #:				05-123-40062-00 15021			
Casing Depths		MD		Depth		Date	
Surface:		790		Start: 5003.00		2/11/15	
Intermediate:		End: 10553.96				KB: 4619.00 GL: 4602.00 DF: 17.00	
Run #	Hole Size (in)	Gamma Offset	Survey Offset	Depth Start	Depth End	Date Start	Date End
01	8.75	47.56	52.00	0.00	6513.00	Feb 12, 15	Feb 15, 15
02	6 1/8	58.00	63.00	6513.00	10612.00	Feb 15, 15	Feb 16, 15

Total Directional Services uses its best efforts to provide its customers with accurate information and interpretations in conjunction with services performed but will not be held liable or responsible for the accuracy of such information or interpretation.

Comments:

Printed: Feb 16, 2015 22:19

Client: **Bonanza Creek Energy**

Well Name: **State Pronghorn X-D-29HNC**

API/UWI: **05-123-40062-00**

Well Lic:

Surface LSD:

State/Prov: **Colorado**

Country: **USA**

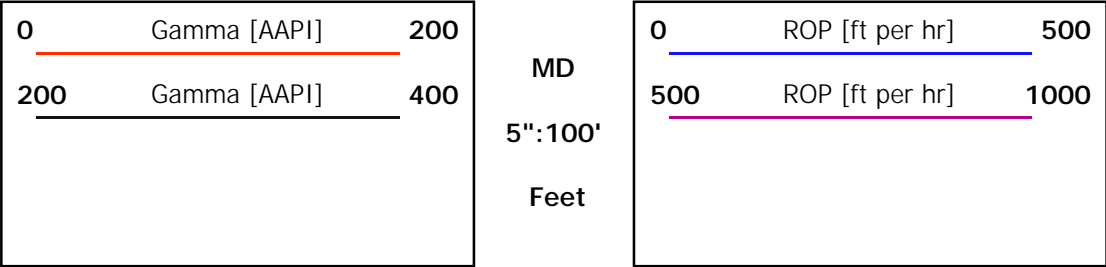
Job #: **2015-007-25**

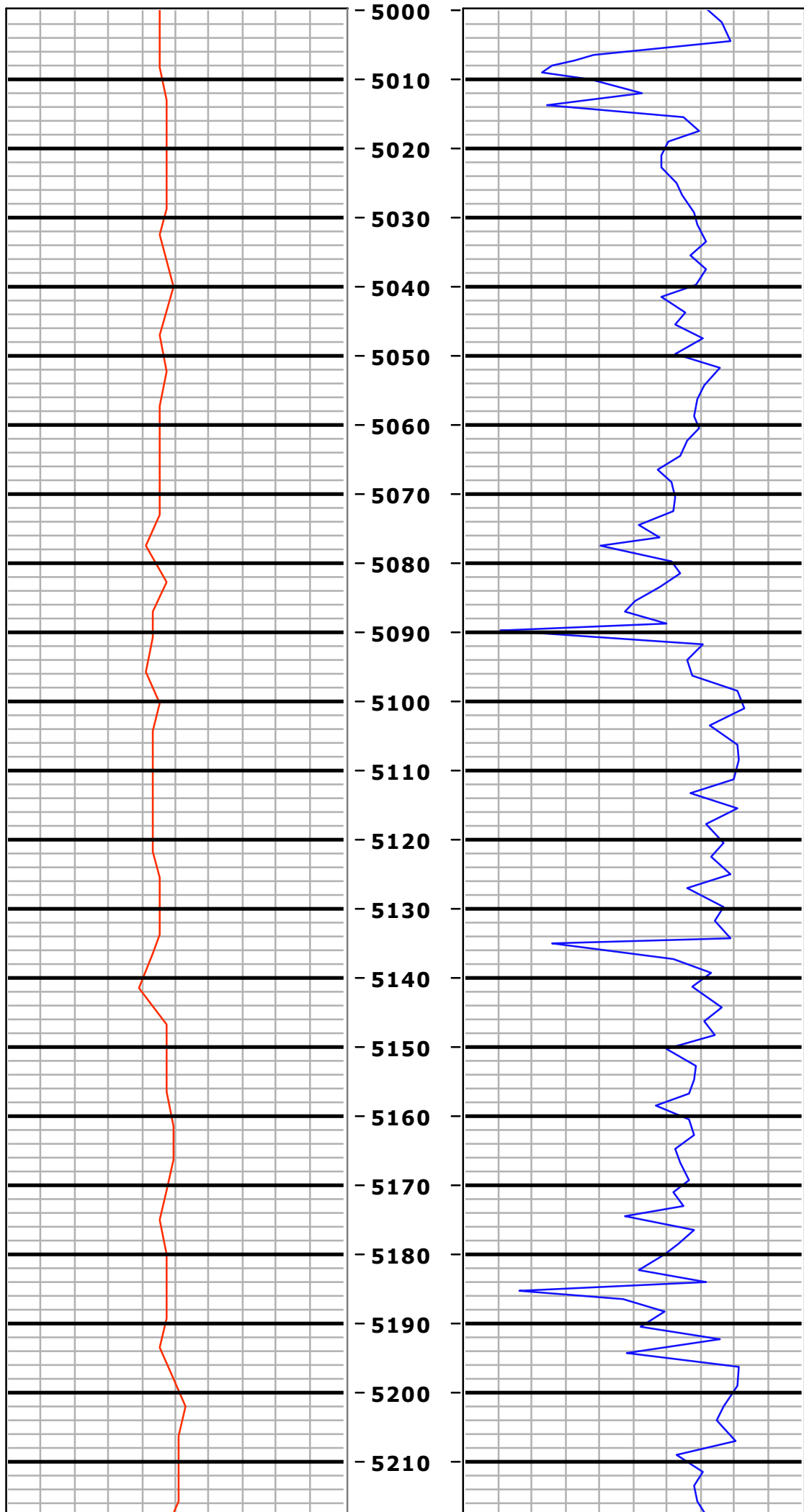
MWD Kit:

KB: **4619.00**

GL: **4602.00**

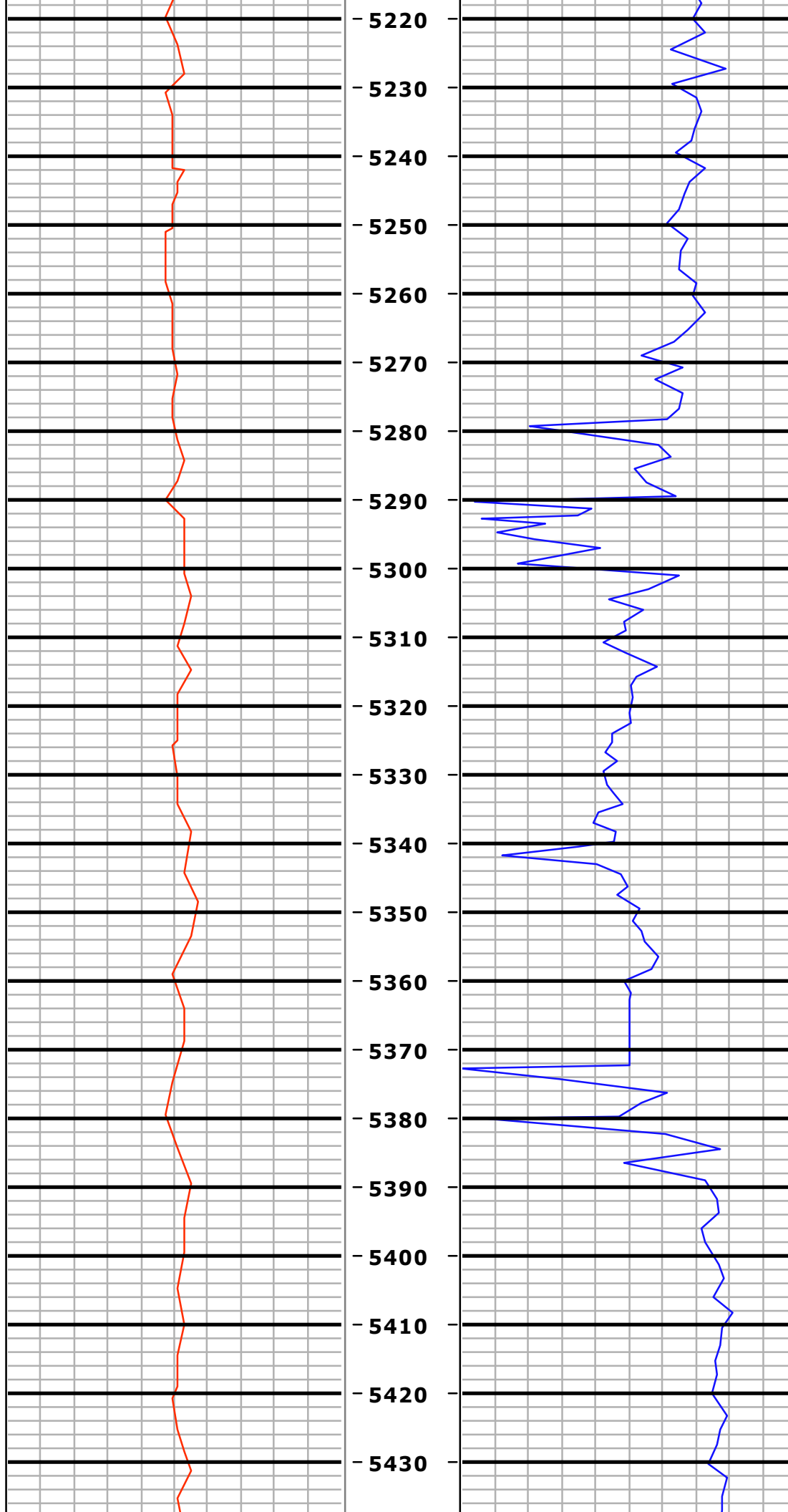
DF: **17.00**





MD=5038.0 INC=1.5
AZM=234.5 TVD=5025.3

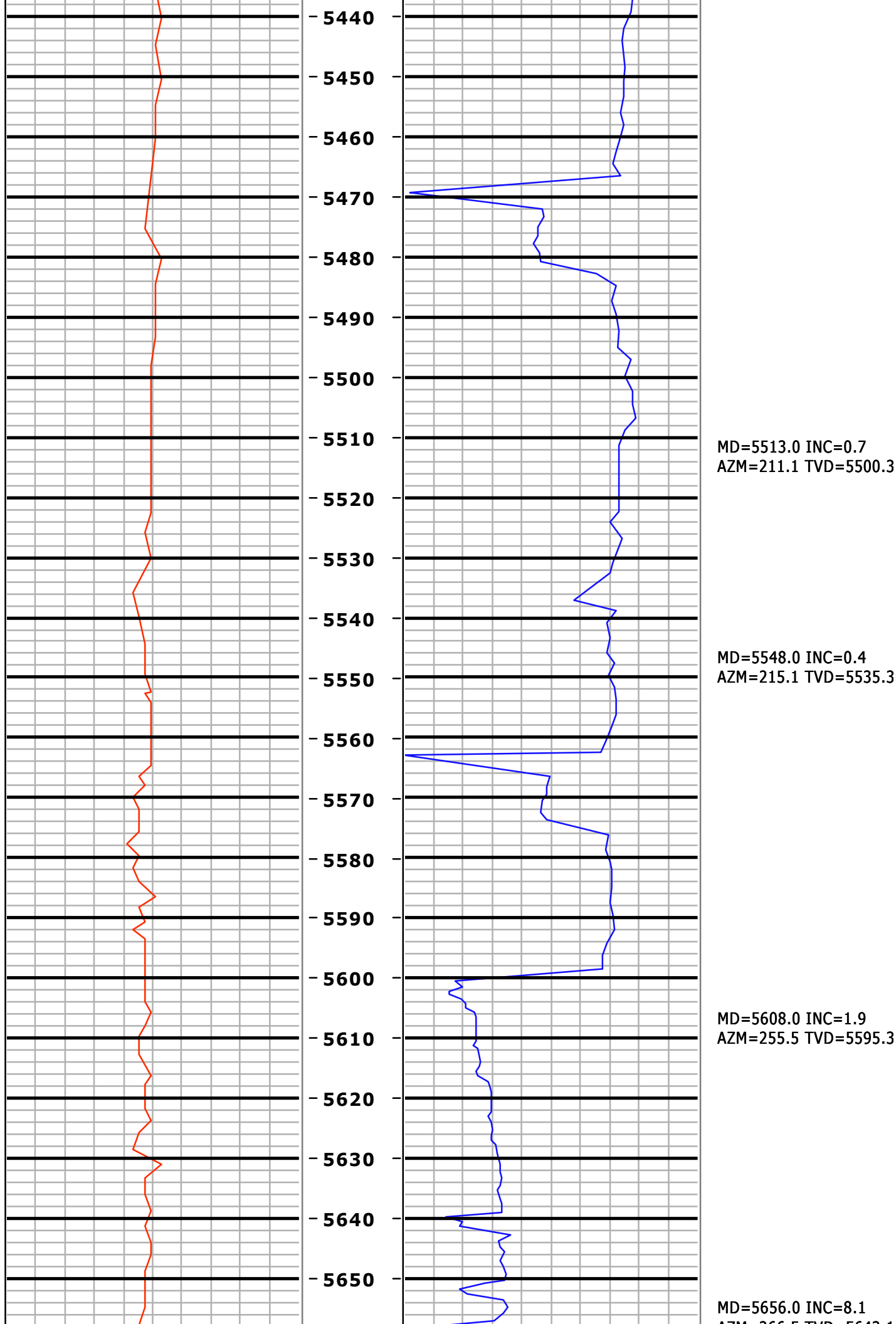
MD=5133.0 INC=0.8
AZM=237.0 TVD=5120.3

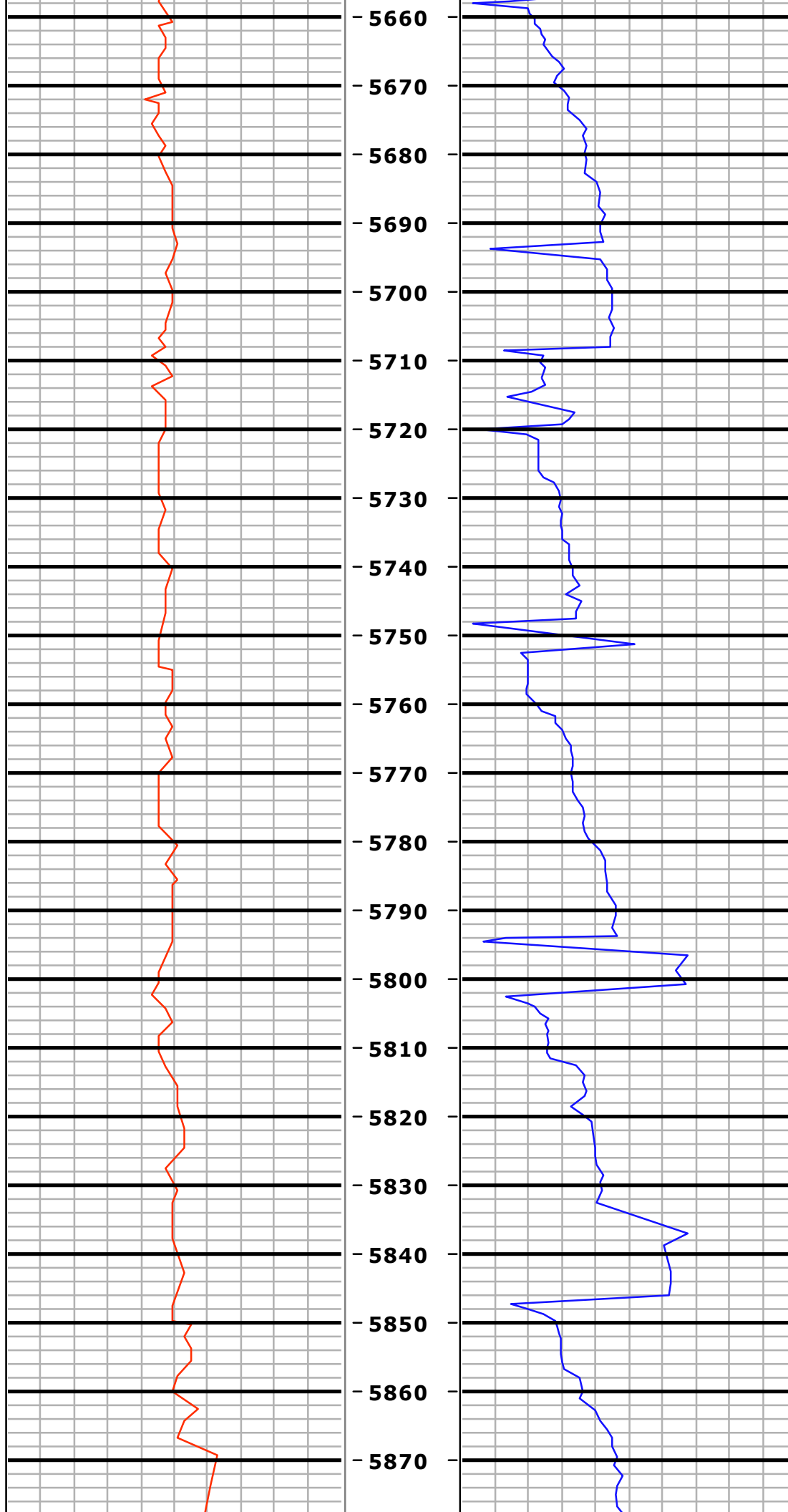


MD=5227.0 INC=0.9
AZM=246.9 TVD=5214.3

MD=5323.0 INC=1.3
AZM=210.7 TVD=5310.3

MD=5418.0 INC=0.8
AZM=209.4 TVD=5405.3





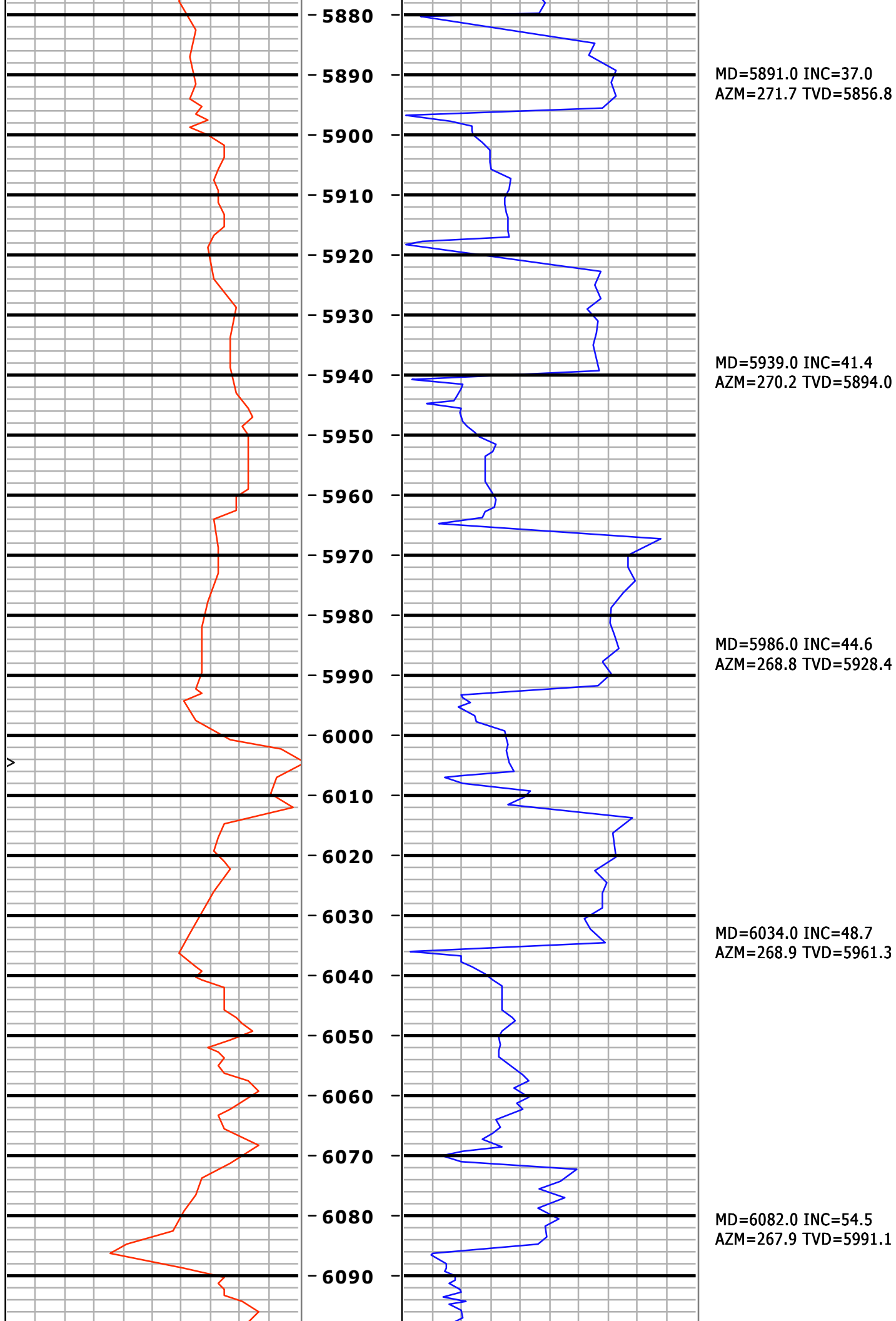
AZM=266.5 TVD=5643.1

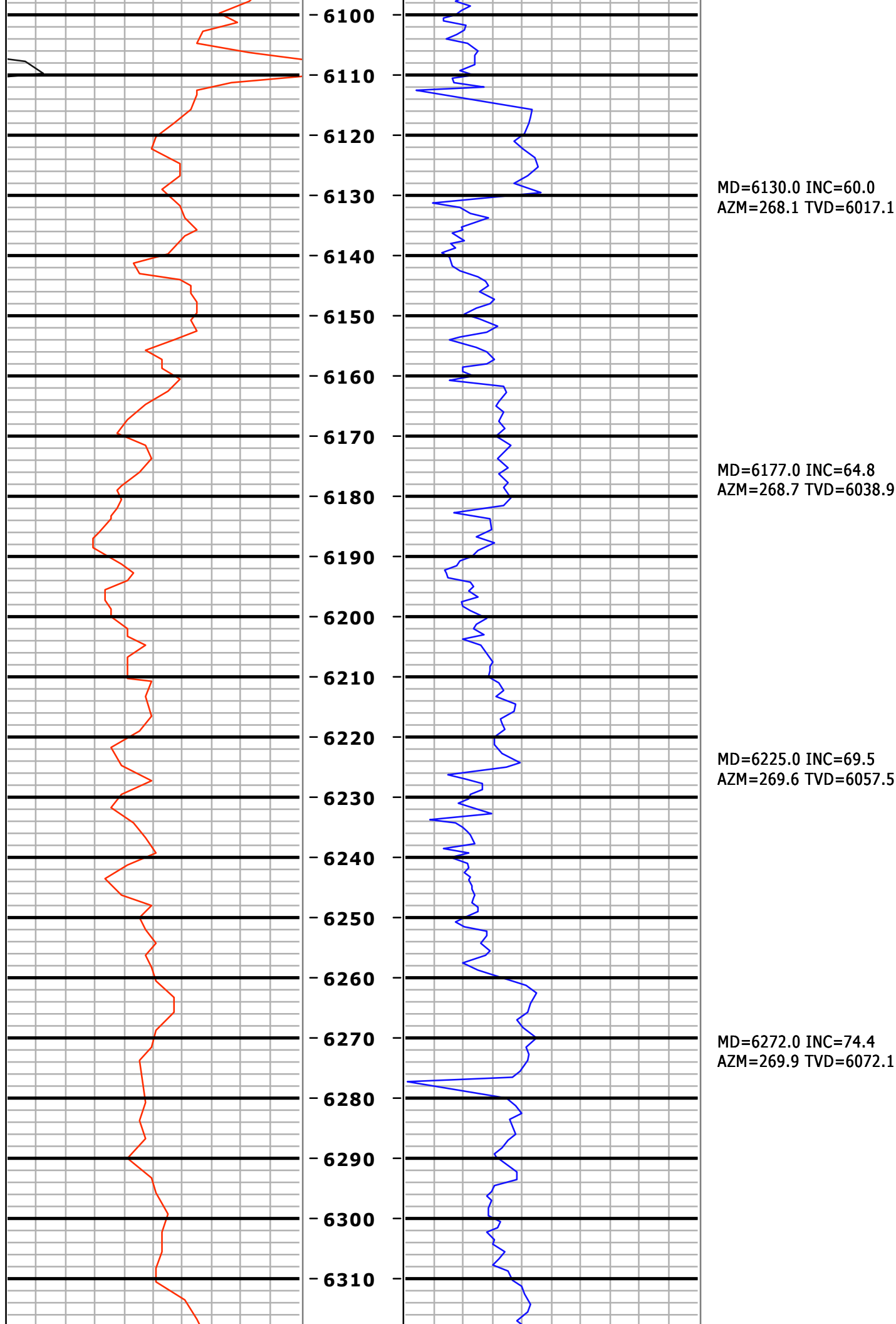
MD=5702.0 INC=14.0
AZM=268.9 TVD=5688.2

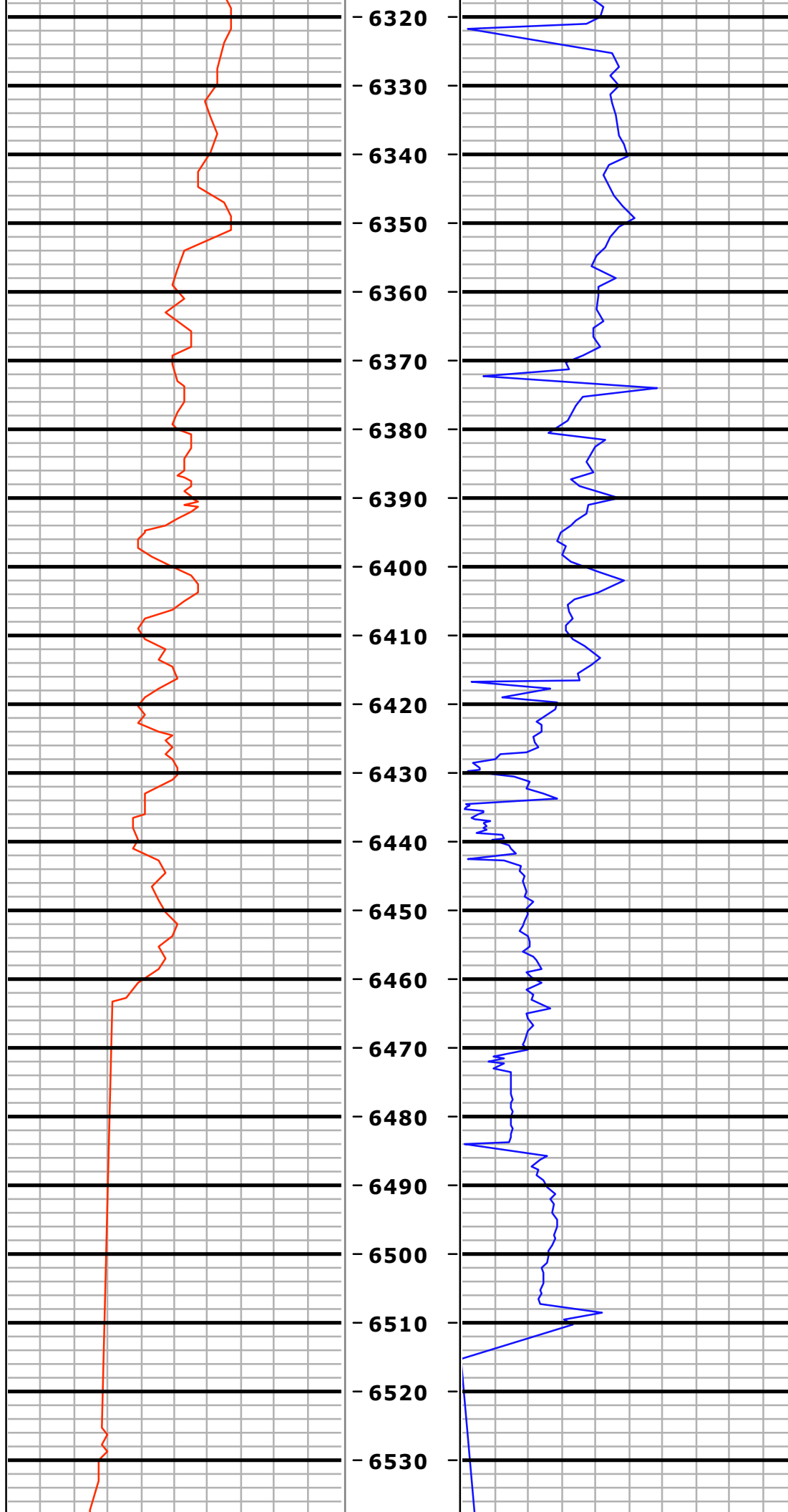
MD=5750.0 INC=20.5
AZM=269.1 TVD=5734.0

MD=5797.0 INC=26.4
AZM=269.3 TVD=5777.1

MD=5845.0 INC=32.1
AZM=269.5 TVD=5819.0





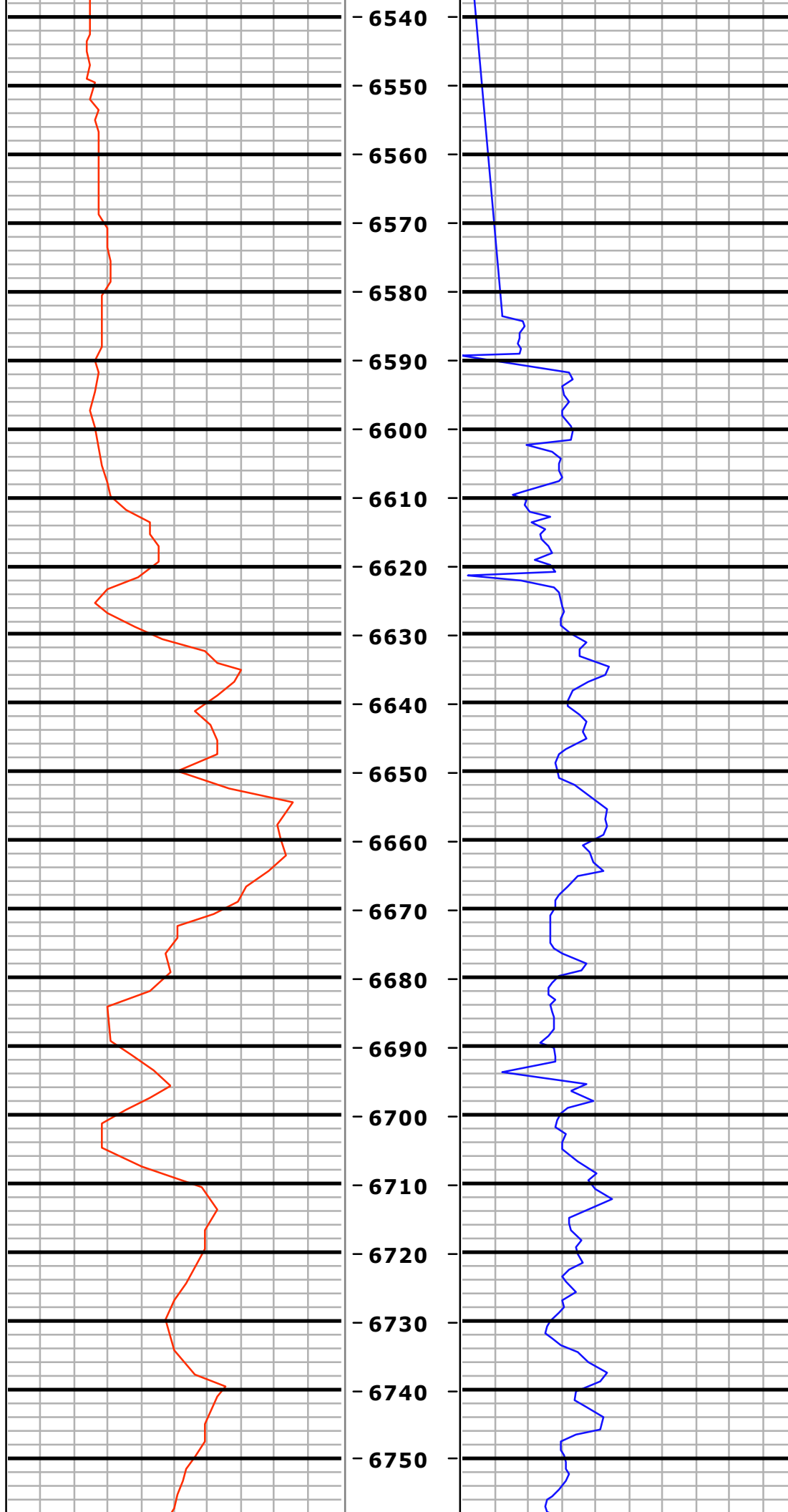


MD=6320.0 INC=75.2
AZM=269.6 TVD=6084.6

MD=6368.0 INC=75.2
AZM=269.4 TVD=6096.9

MD=6416.0 INC=76.3
AZM=269.3 TVD=6108.7

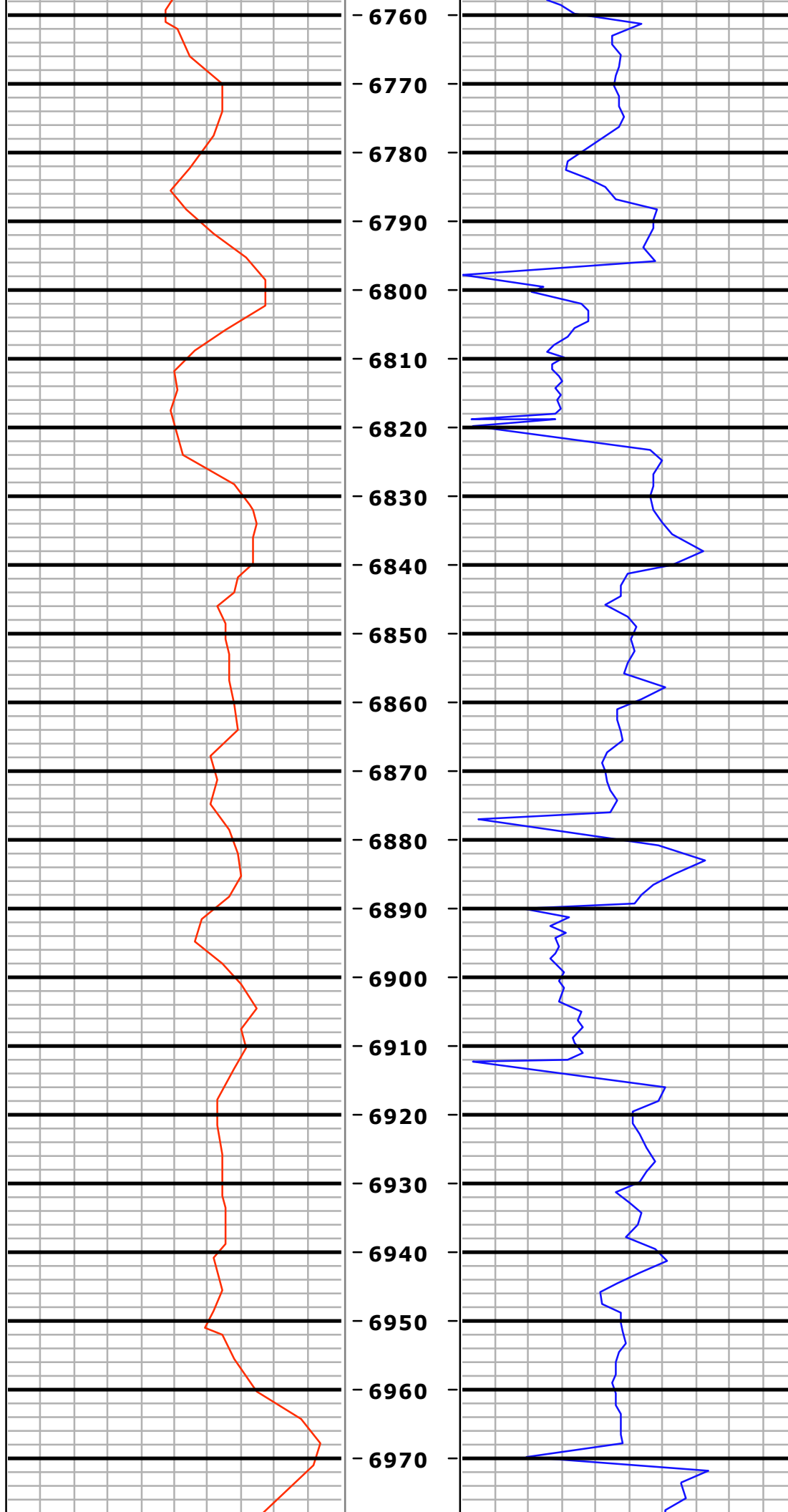
MD=6461.0 INC=82.4
AZM=269.5 TVD=6117.0



MD=6540.0 INC=87.2
AZM=270.7 TVD=6124.2

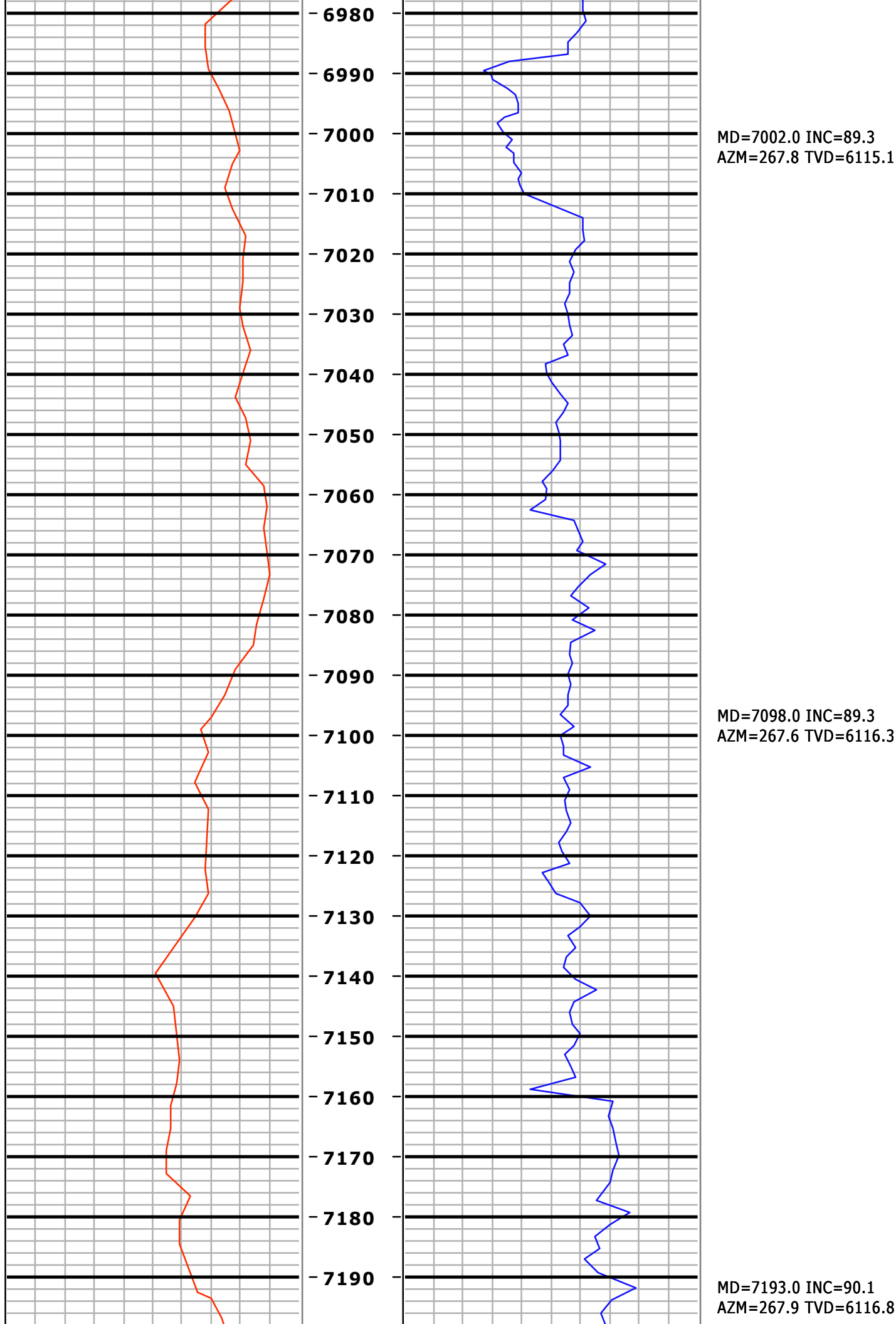
MD=6633.0 INC=91.7
AZM=269.7 TVD=6125.1

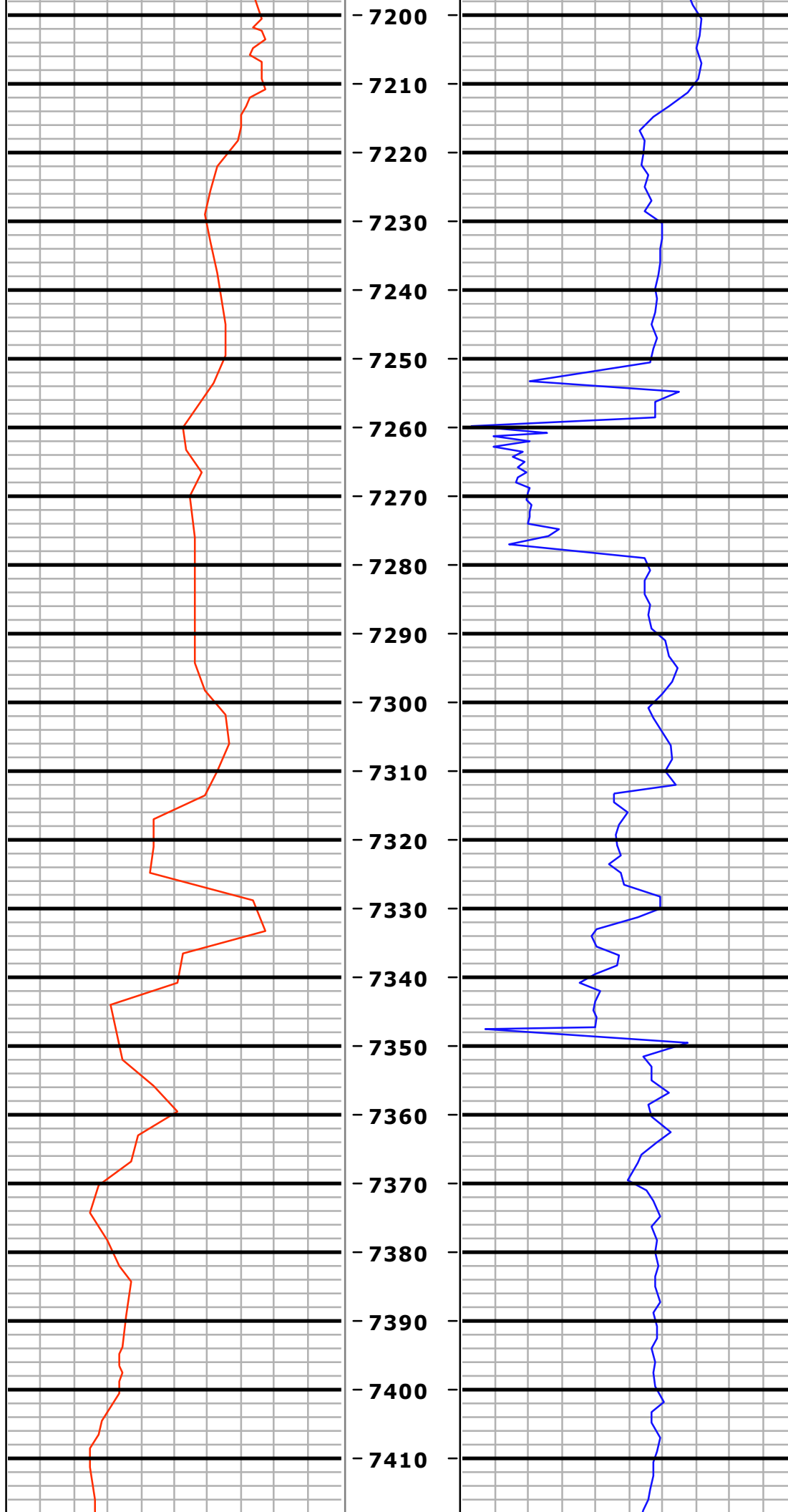
MD=6725.0 INC=92.8
AZM=269.7 TVD=6121.5

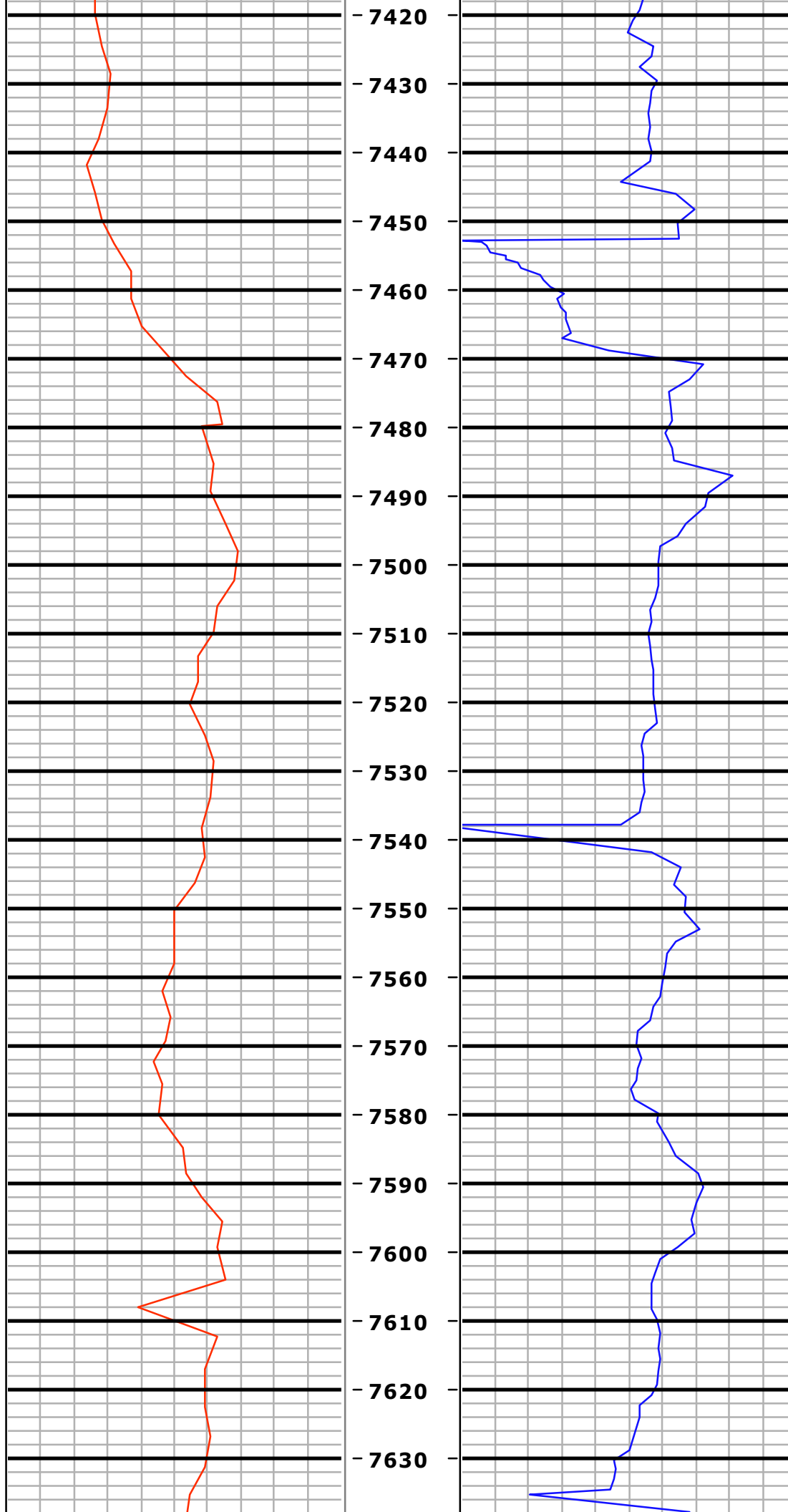


MD=6817.0 INC=92.2
AZM=267.8 TVD=6117.5

MD=6909.0 INC=90.7
AZM=268.3 TVD=6115.1

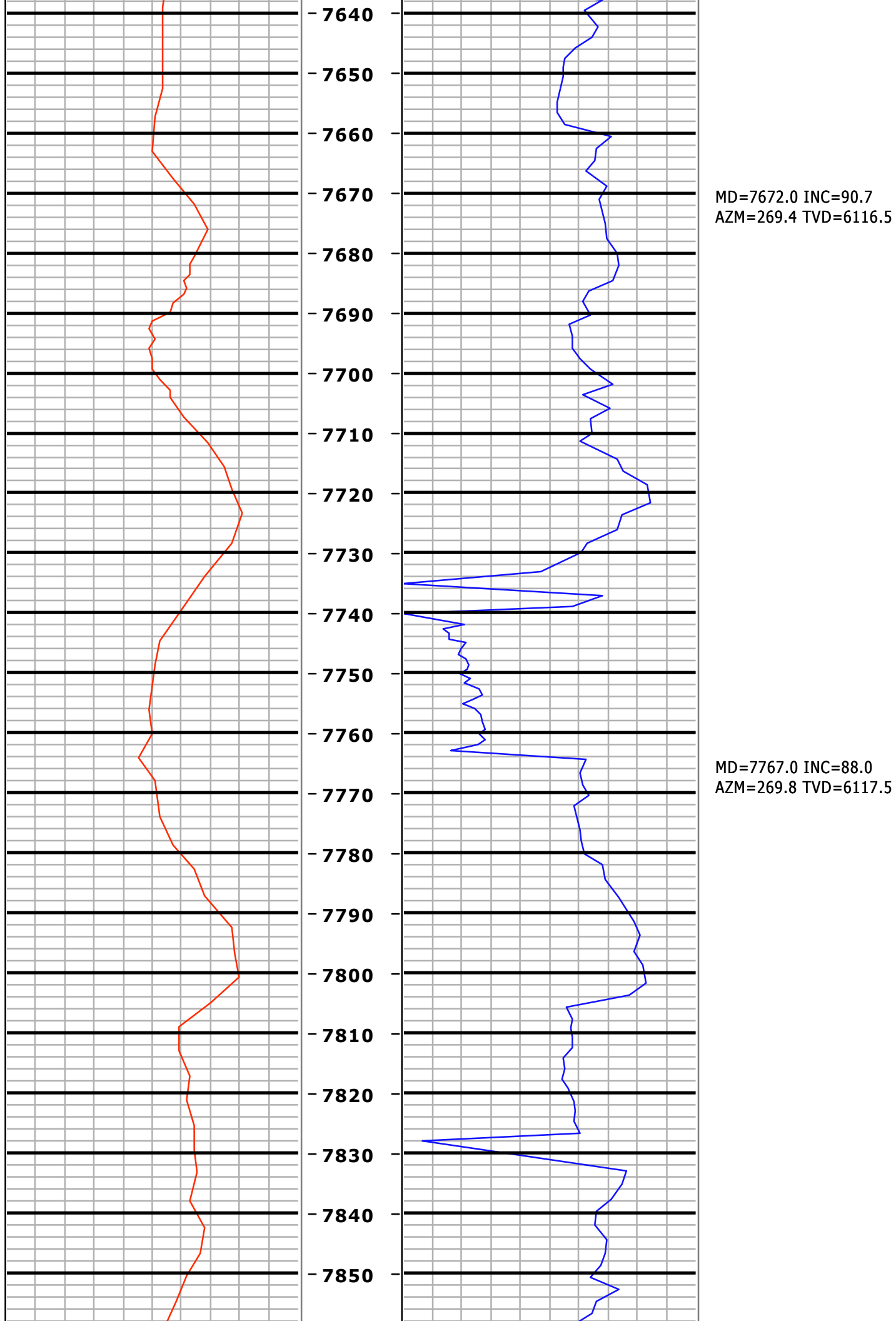


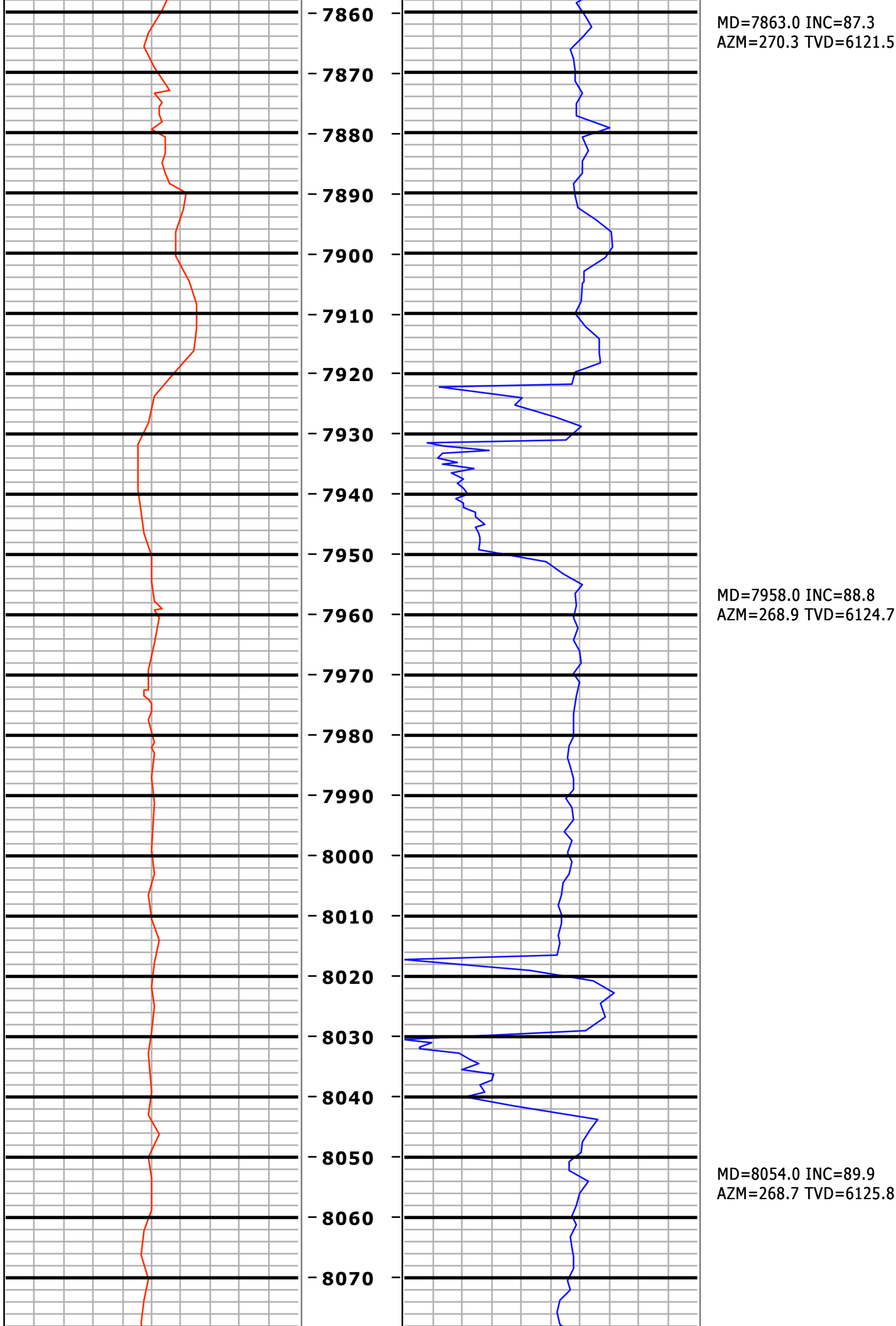


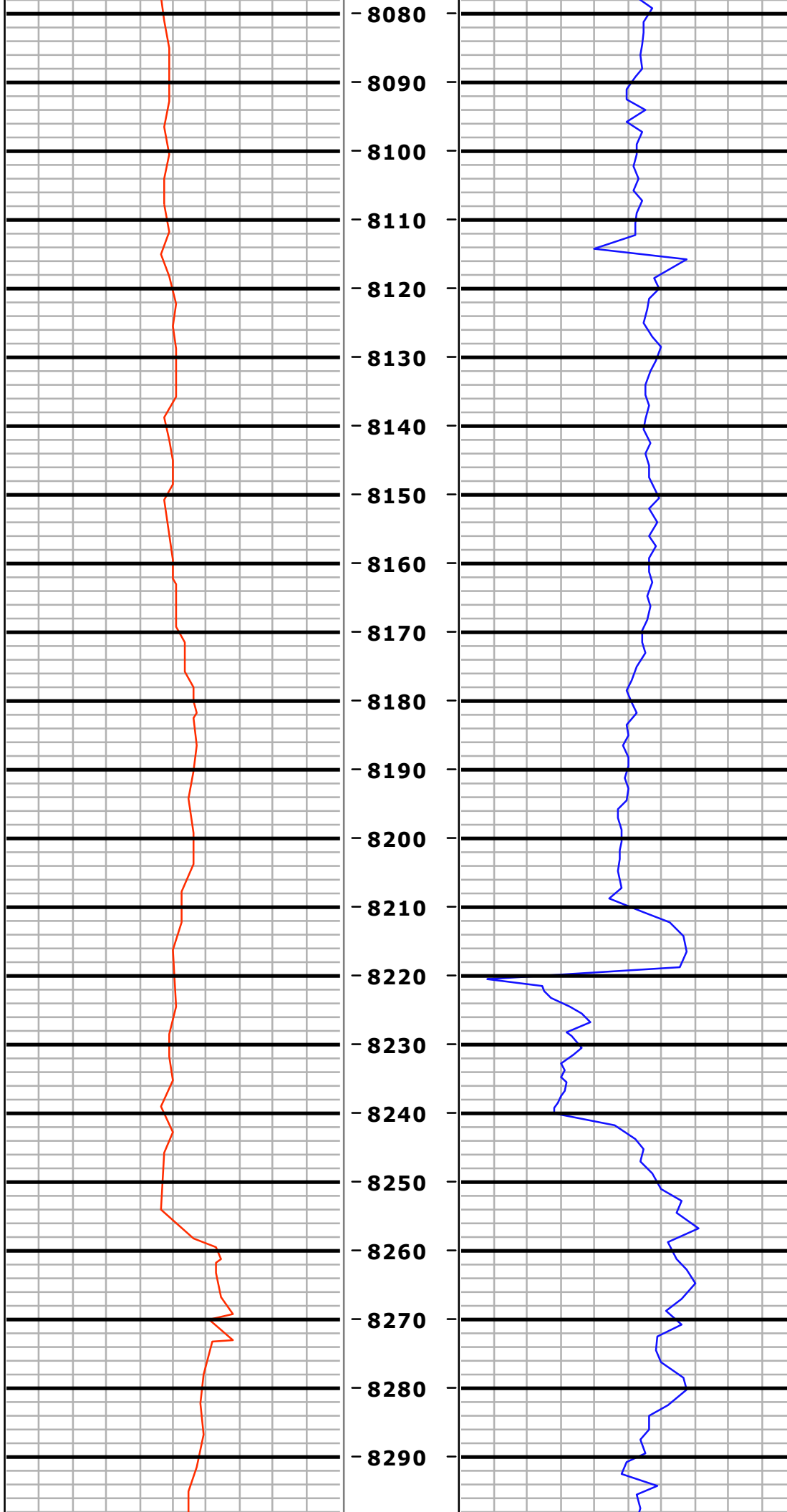


MD=7480.0 INC=90.2
AZM=270.1 TVD=6116.9

MD=7576.0 INC=89.8
AZM=268.7 TVD=6116.9

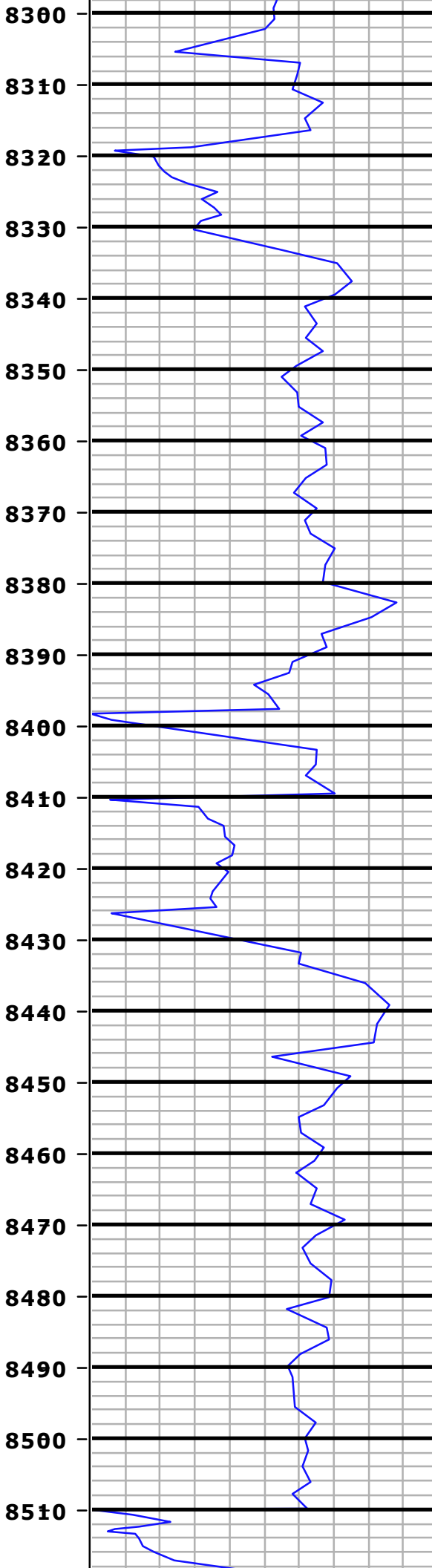
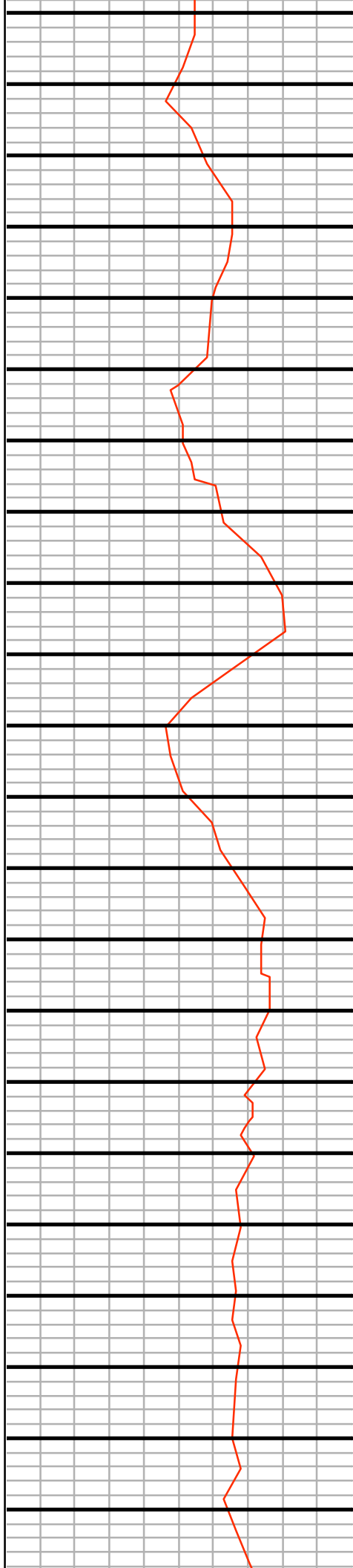






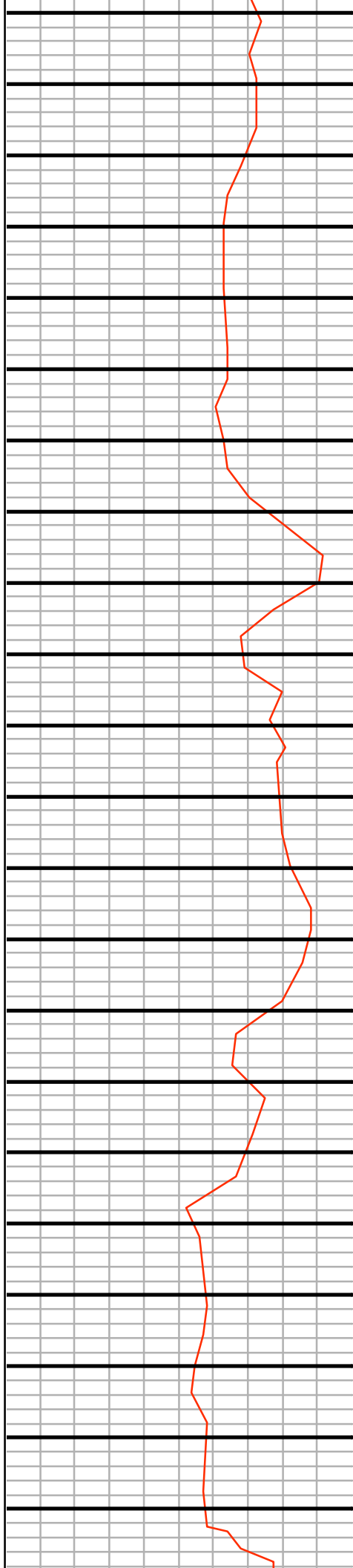
MD=8150.0 INC=88.7
AZM=267.3 TVD=6127.0

MD=8245.0 INC=92.0
AZM=269.3 TVD=6126.4

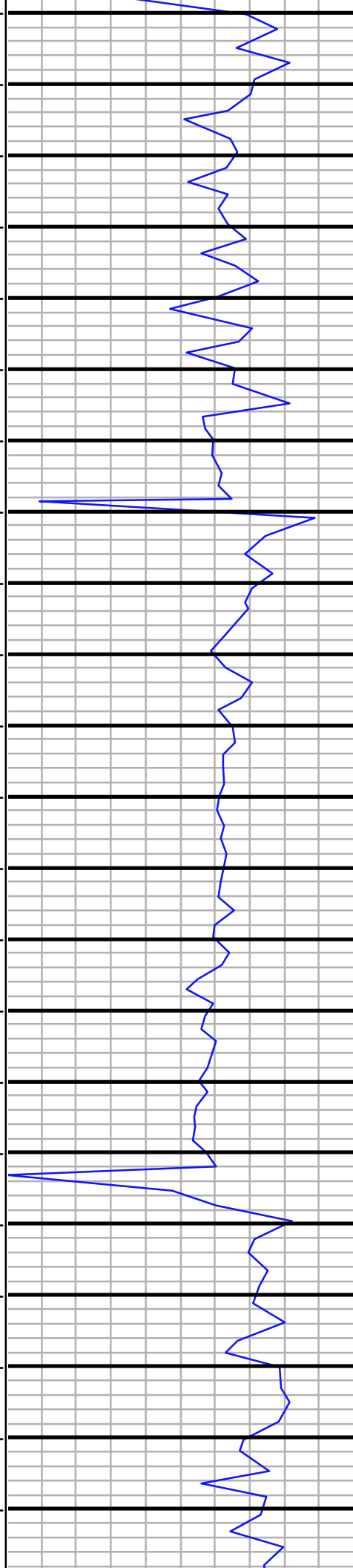


MD=8340.0 INC=91.6
AZM=271.0 TVD=6123.4

MD=8436.0 INC=90.8
AZM=270.9 TVD=6121.4



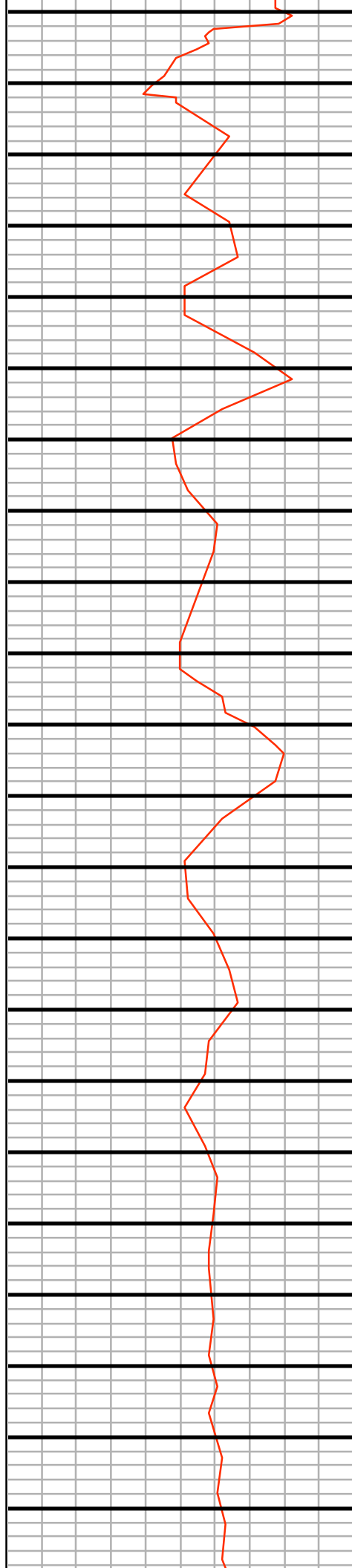
8520
8530
8540
8550
8560
8570
8580
8590
8600
8610
8620
8630
8640
8650
8660
8670
8680
8690
8700
8710
8720
8730



MD=8531.0 INC=90.1
AZM=271.1 TVD=6120.7

MD=8626.0 INC=90.3
AZM=270.8 TVD=6120.3

MD=8722.0 INC=91.3
AZM=270.7 TVD=6119.0



8740

8750

8760

8770

8780

8790

8800

8810

8820

8830

8840

8850

8860

8870

8880

8890

8900

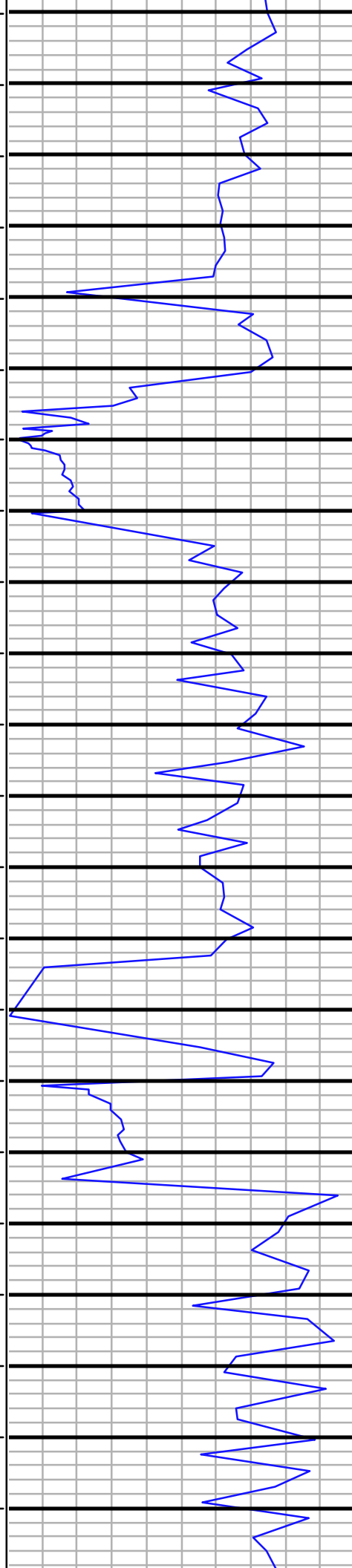
8910

8920

8930

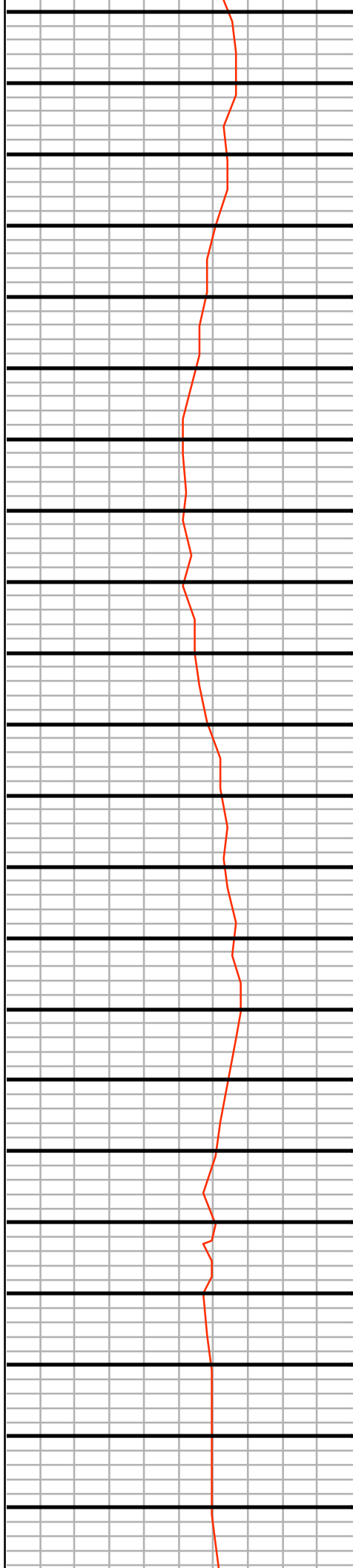
8940

8950



MD=8817.0 INC=90.5
AZM=269.9 TVD=6117.5

MD=8913.0 INC=89.0
AZM=267.7 TVD=6117.9



8960

8970

8980

8990

9000

9010

9020

9030

9040

9050

9060

9070

9080

9090

9100

9110

9120

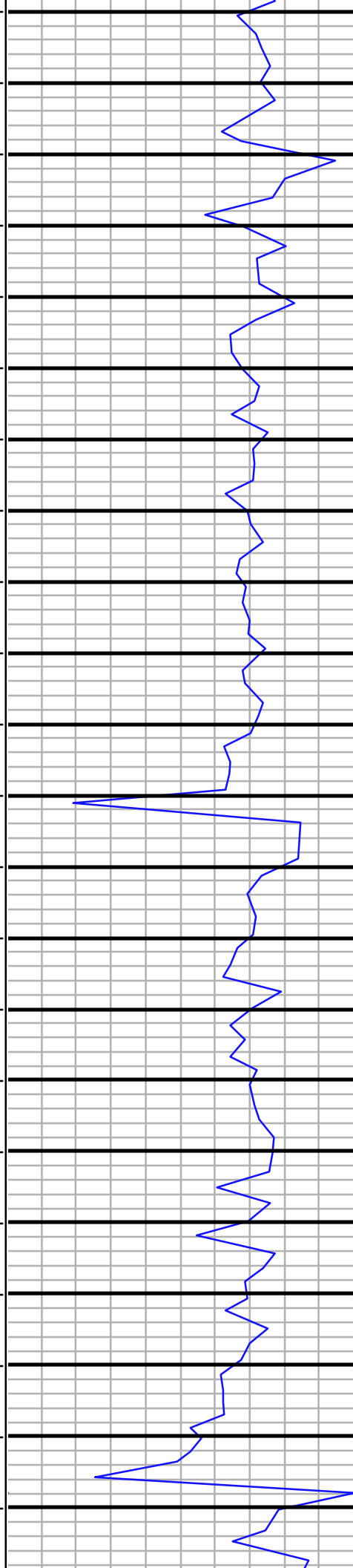
9130

9140

9150

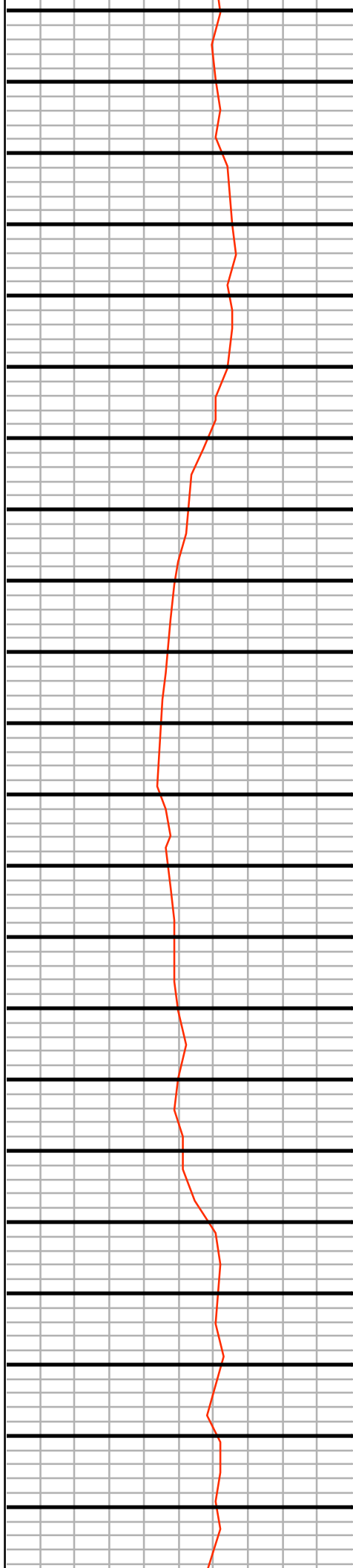
9160

9170



MD=9009.0 INC=88.9
AZM=267.2 TVD=6119.7

MD=9104.0 INC=89.6
AZM=267.5 TVD=6120.9



9180

9190

9200

9210

9220

9230

9240

9250

9260

9270

9280

9290

9300

9310

9320

9330

9340

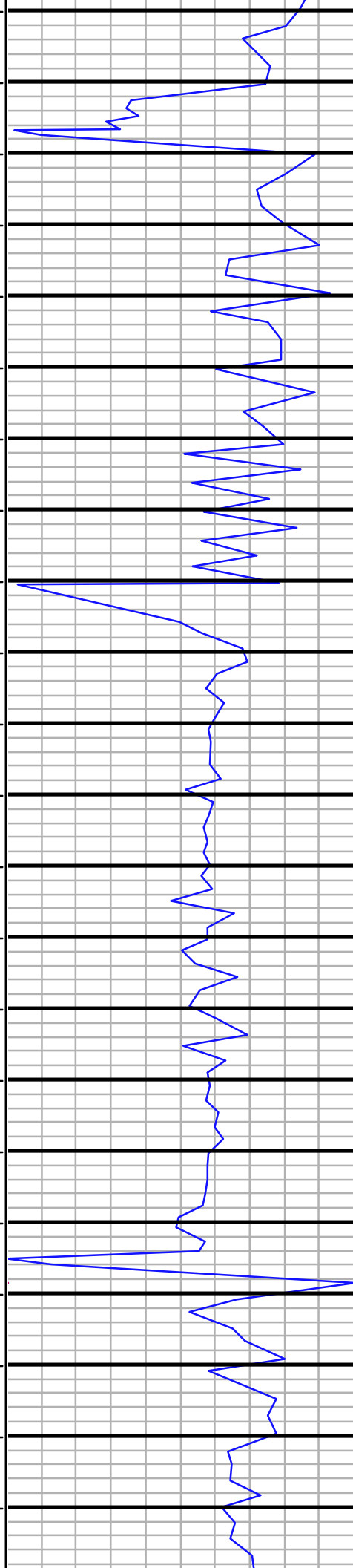
9350

9360

9370

9380

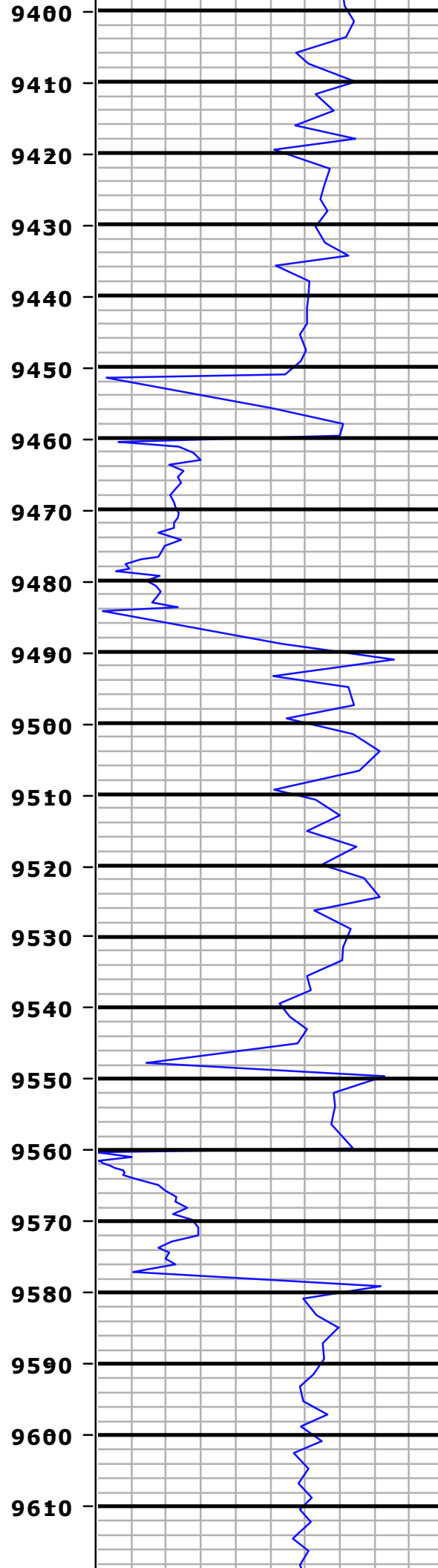
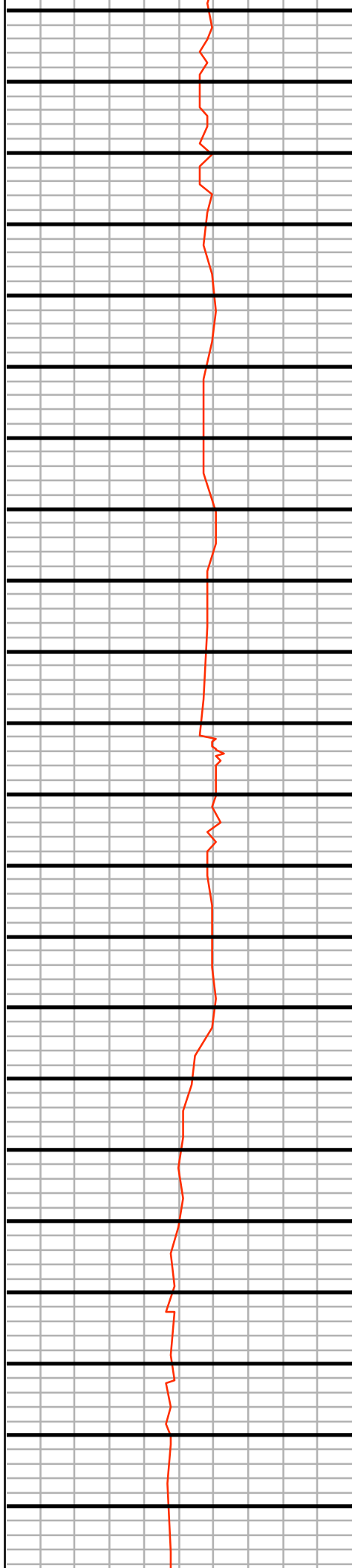
9390



MD=9200.0 INC=88.8
AZM=266.9 TVD=6122.2

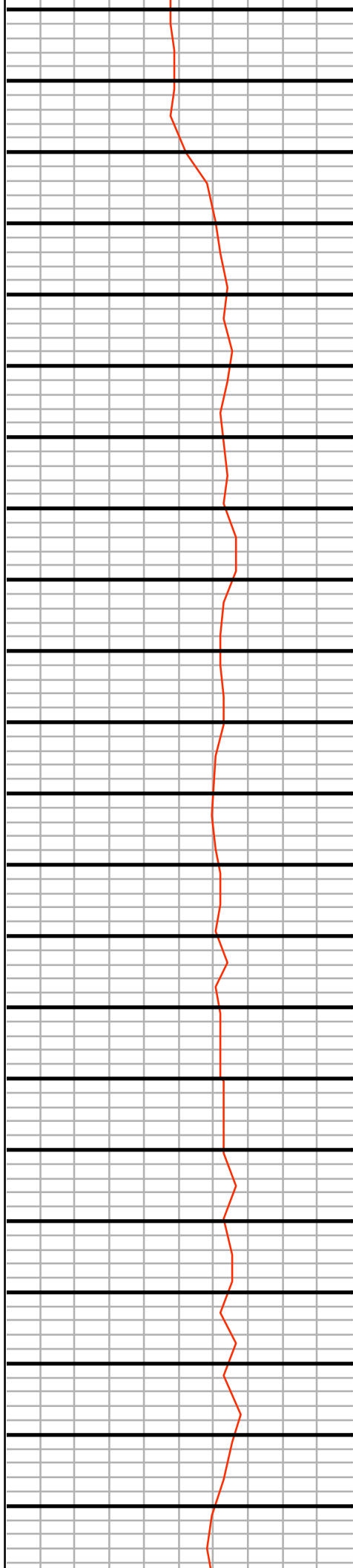
MD=9295.0 INC=89.2
AZM=267.5 TVD=6123.9

MD=9390.0 INC=88.6
AZM=266.1 TVD=6125.7

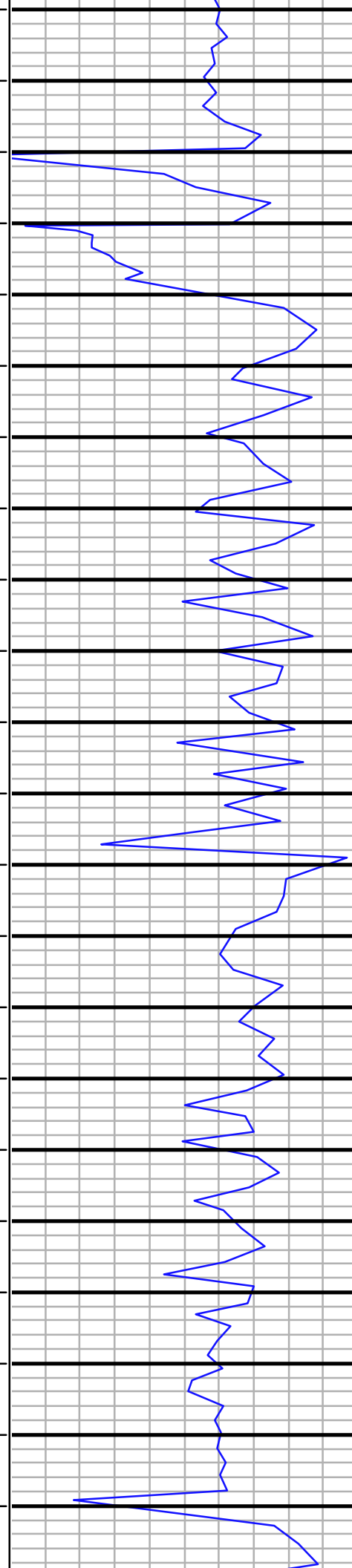


MD=9486.0 INC=90.3
AZM=268.9 TVD=6126.7

MD=9581.0 INC=90.2
AZM=270.1 TVD=6126.2

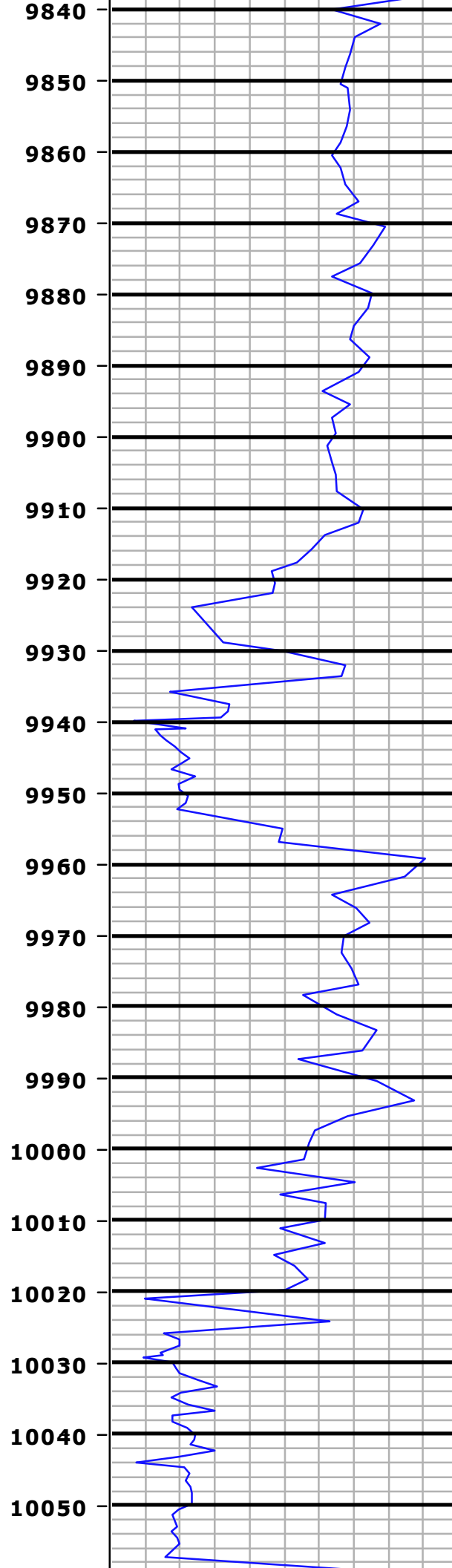
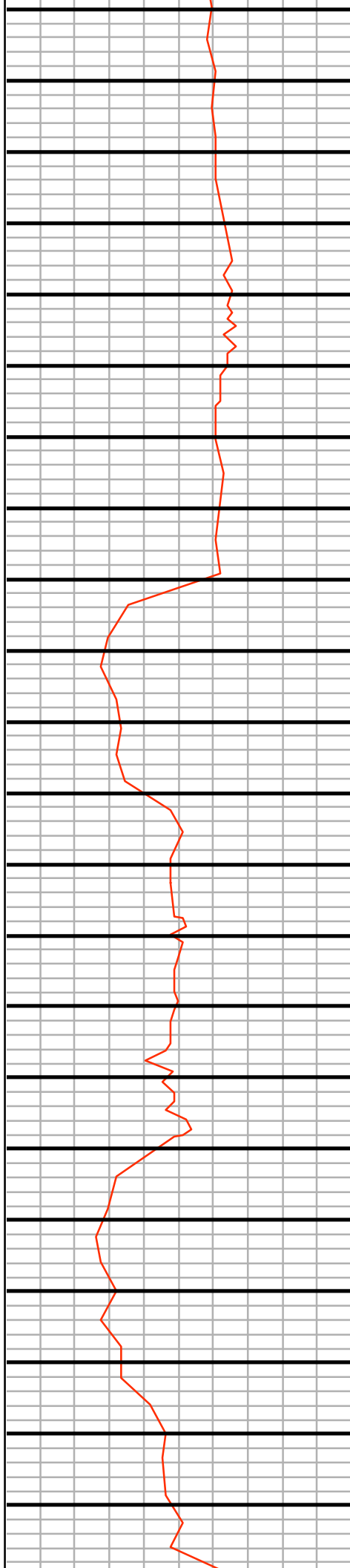


9620
9630
9640
9650
9660
9670
9680
9690
9700
9710
9720
9730
9740
9750
9760
9770
9780
9790
9800
9810
9820
9830



MD=9676.0 INC=89.9
AZM=270.3 TVD=6126.2

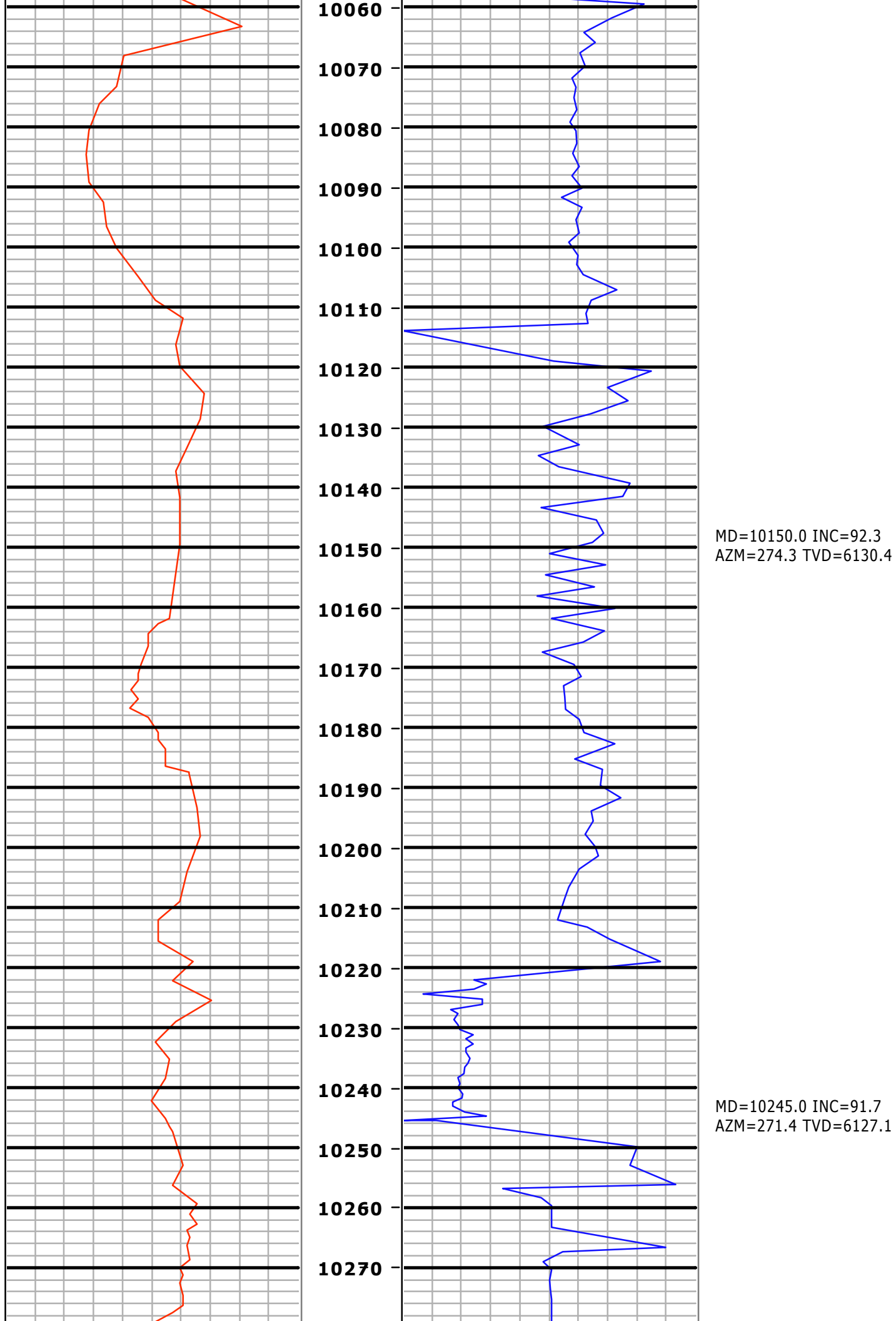
MD=9769.0 INC=89.5
AZM=269.7 TVD=6126.6

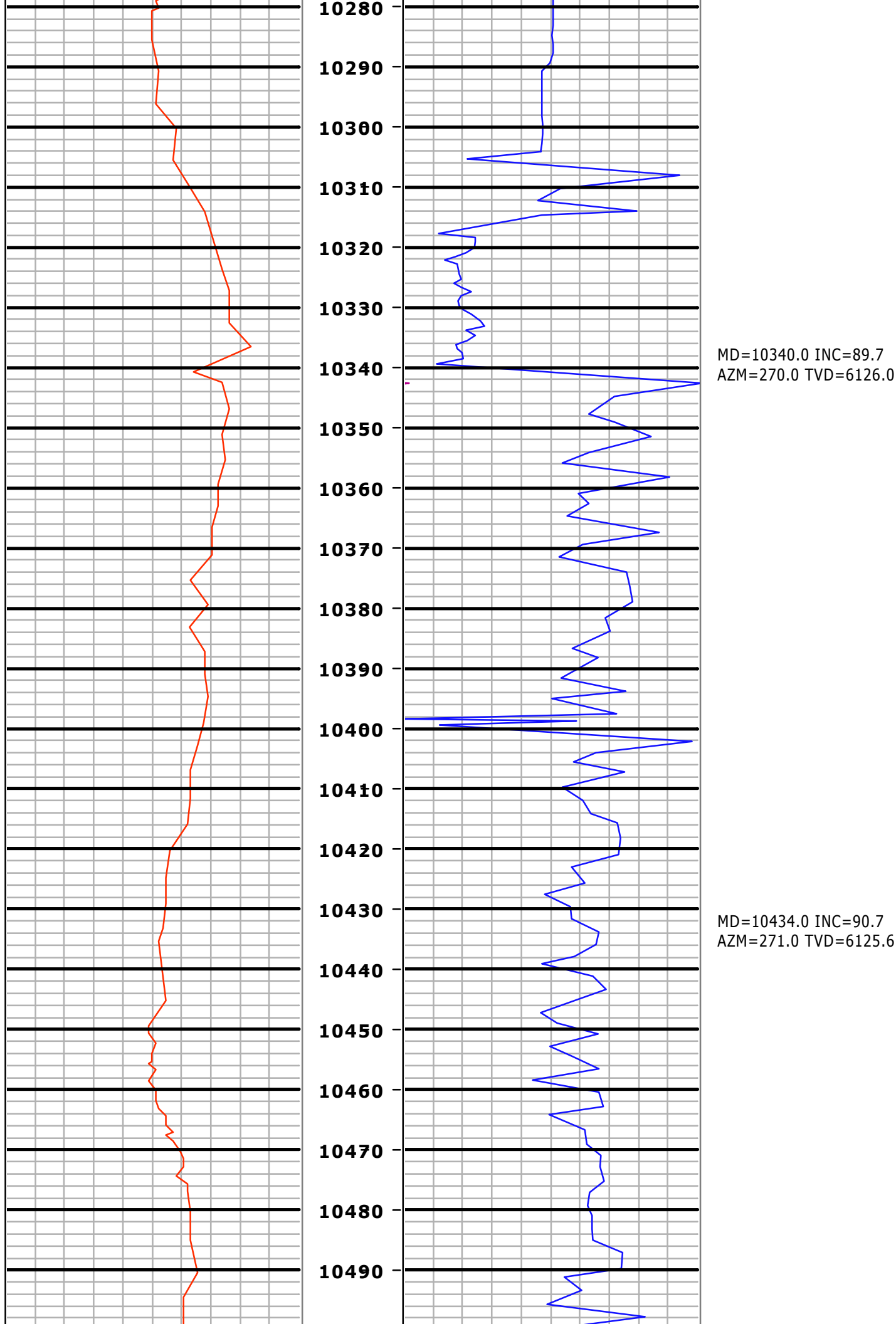


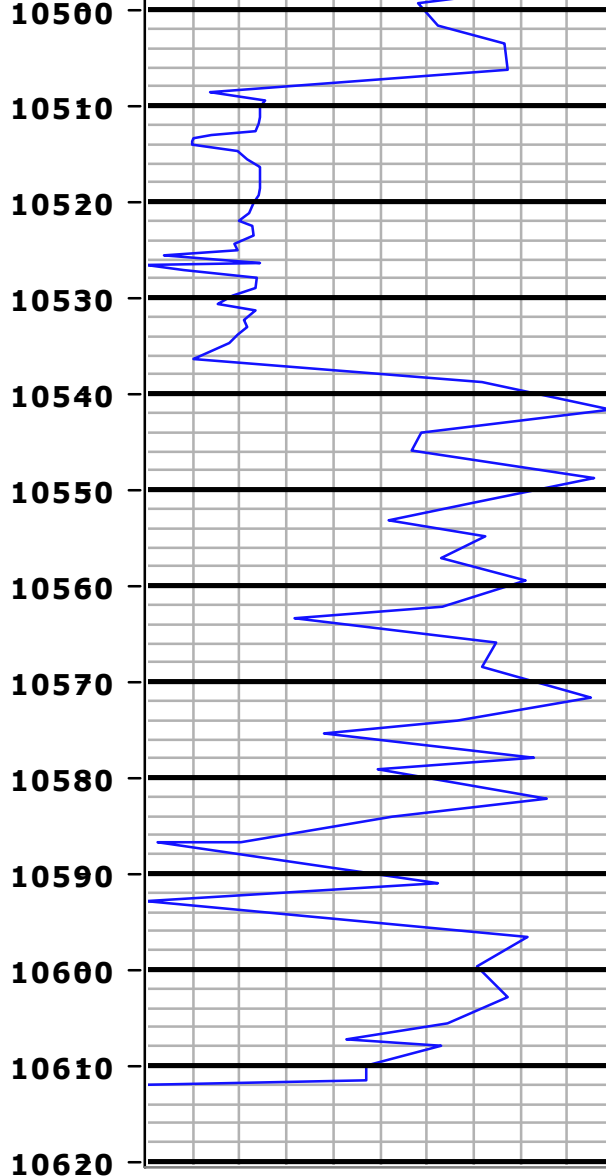
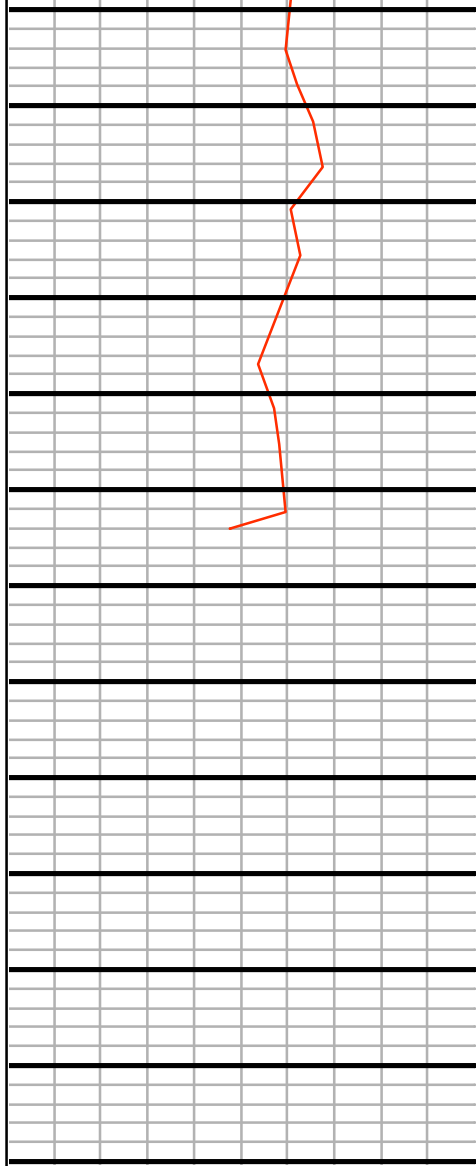
MD=9864.0 INC=88.1
AZM=268.2 TVD=6128.6

MD=9959.0 INC=87.8
AZM=269.5 TVD=6132.0

MD=10054.0 INC=90.9
AZM=273.6 TVD=6133.1







MD=10529.0 INC=87.9
AZM=269.0 TVD=6126.8

MD=10549.0 INC=87.7
AZM=267.7 TVD=6127.6

0	Gamma [AAPI]	200
200	Gamma [AAPI]	400

Feet
5":100'
MD

0	ROP [ft per hr]	500
500	ROP [ft per hr]	1000

Mezintel

Client: **Bonanza Creek Energy**

Well Name: **State Pronghorn X-D-29HNC**

API/UWI: **05-123-40062-00**

Well Lic:

G DAT: **0**

Surface LSD:

KB: **4619.00**

State/Prov: **Colorado**

Job #: **2015-007-25** GL: **4602.00**

Country: **USA**

MWD Kit:

DF: **17.00**