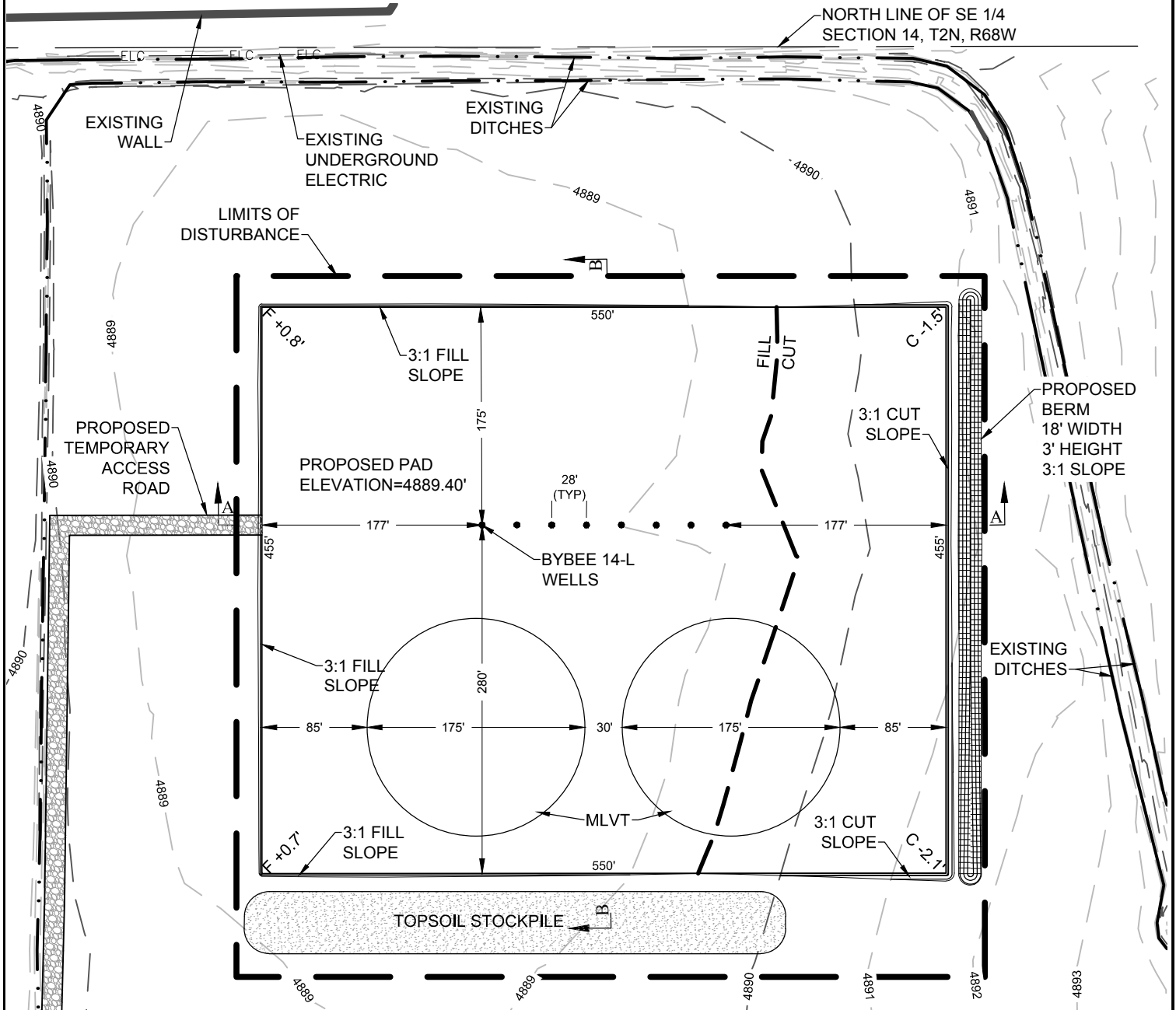
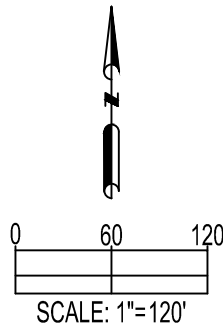


BYBEE 14-L PAD PAD LAYOUT



NOTES:

1. A COMPLETE UTILITIES LOCATION IS RECOMMENDED BEFORE CONSTRUCTION.
2. GEOGRAPHIC POSITIONS/COORDINATES SHOWN HEREON ARE IN NAD83 DATUM.
3. EARTHWORK QUANTITIES ARE APPROXIMATE & FOR INFORMATION ONLY. 6" OF TOPSOIL HAS BEEN SUBTRACTED FROM EXISTING SURFACE PRIOR TO PERFORMING EARTHWORK CALCULATIONS.
4. STOCKPILES ARE ASSUMED TO BE 10' IN HEIGHT WITH 2:1 SIDE SLOPES.



SITE QUANTITIES

FINISHED GRADE ELEVATION	4889.40'
TOTAL CUT FOR WELL PAD	887 CY
FILL FOR WELL PAD AND BERM	9,266 CY
10% FILL FACTOR	927 CY
TOTAL FILL	10,193 CY
NEEDED IMPORT MATERIAL	9,306 CY
TOPSOIL FROM GRADED AREA	4,743 CY
TOTAL DISTURBANCE AREA	7.8 ACRES

PREPARED BY:



FIELD DATE:
08-27-14

DRAWING DATE:
11-04-15

BY:
SWW

CHECKED BY:
WDW

SITE NAME:

BYBEE 14-L PAD

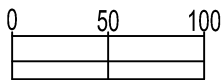
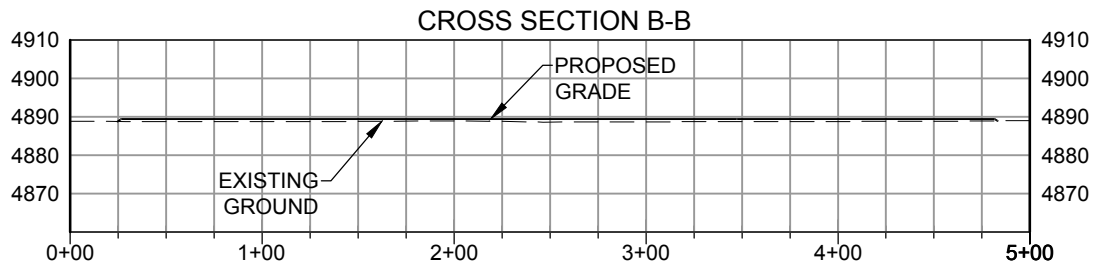
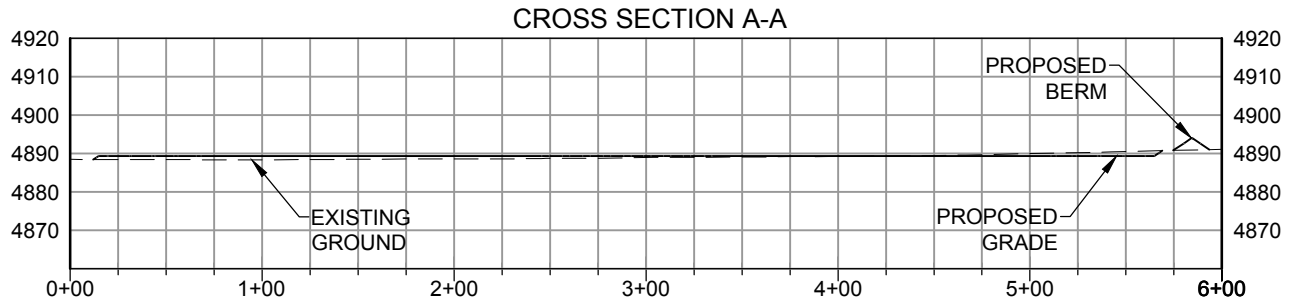
SURFACE LOCATION:

N 1/2 SE 1/4 SEC. 14, T2N, R68W, 6TH P.M.
WELD COUNTY, COLORADO

PREPARED FOR:



BYBEE 14-L PAD CROSS SECTIONS



SCALE: 1"=100'
VERT SCALE: 1"=50'

NOTE:

1. A COMPLETE UTILITIES LOCATION IS RECOMMENDED BEFORE CONSTRUCTION.
2. GEOGRAPHIC POSITIONS/COORDINATES SHOWN HEREON ARE IN NAD83 DATUM.

PREPARED BY:



FIELD DATE:

08-27-14

DRAWING DATE:

11-04-15

BY:

SWW

CHECKED BY:

WDW

SITE NAME:

BYBEE 14-L PAD

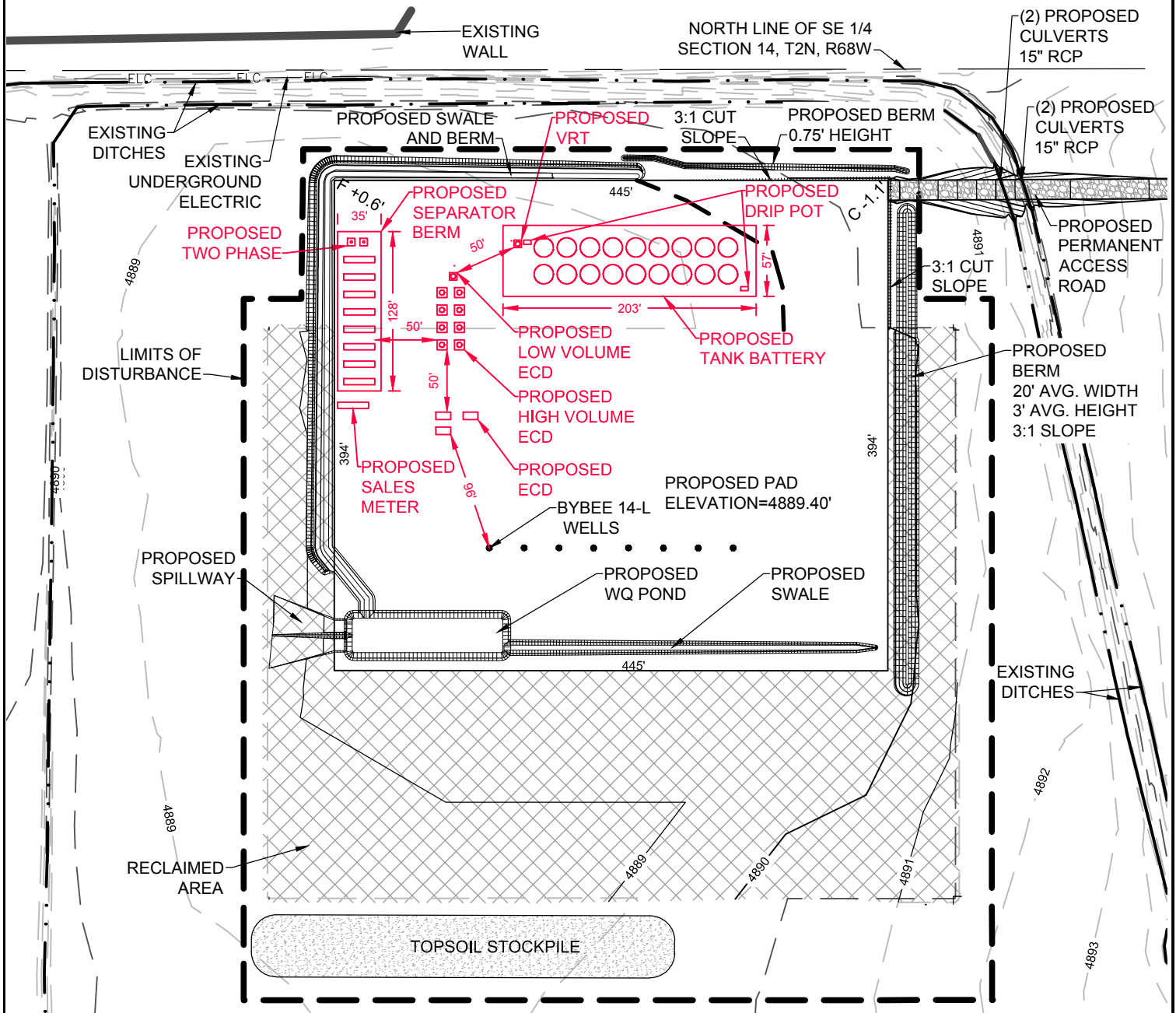
SURFACE LOCATION:

N 1/2 SE 1/4 SEC. 14, T2N, R68W, 6TH P.M.
WELD COUNTY, COLORADO

PREPARED FOR:

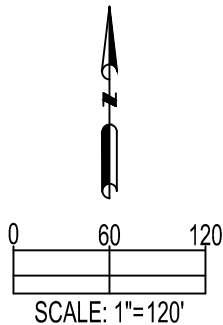


BYBEE 14-L PAD PRODUCTION LAYOUT



NOTES:

1. A COMPLETE UTILITIES LOCATION IS RECOMMENDED BEFORE CONSTRUCTION.
2. GEOGRAPHIC POSITIONS/COORDINATES SHOWN HEREON ARE IN NAD83 DATUM.
3. EARTHWORK QUANTITIES ARE APPROXIMATE & FOR INFORMATION ONLY. 6" OF TOPSOIL HAS BEEN SUBTRACTED FROM EXISTING SURFACE PRIOR TO PERFORMING EARTHWORK CALCULATIONS.
4. STOCKPILES ARE ASSUMED TO BE 10' IN HEIGHT WITH 2:1 SIDE SLOPES.



SITE QUANTITIES

FINISHED GRADE ELEVATION	4889.40'
TOTAL CUT FOR PRODUCTION PAD	1,356 CY
FILL FOR PRODUCTION PAD	2,706 CY
10% FILL FACTOR	271 CY
TOTAL FILL	2,977 CY
NET CUT FOR DRAINAGE FEATURES	167 CY
NET CUT FOR PRODUCTION PAD BERM	41 CY
TOTAL MATERIAL TO IMPORT	1,413 CY
TOPSOIL FROM GRADED AREA	3,245 CY
TOTAL DISTURBANCE AREA	9.1 ACRES

PREPARED BY:



FIELD DATE:
08-27-14

DRAWING DATE:
11-04-15

BY:
SWW

CHECKED BY:
WDW

SITE NAME:

BYBEE 14-L PAD

SURFACE LOCATION:

N 1/2 SE 1/4 SEC. 14, T2N, R68W, 6TH P.M.
WELD COUNTY, COLORADO

PREPARED FOR:

