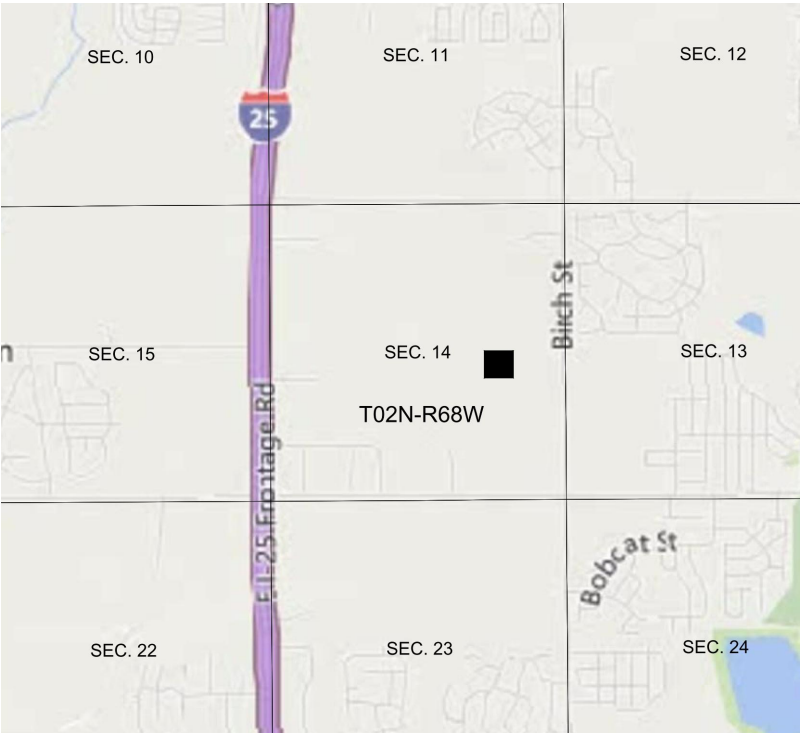
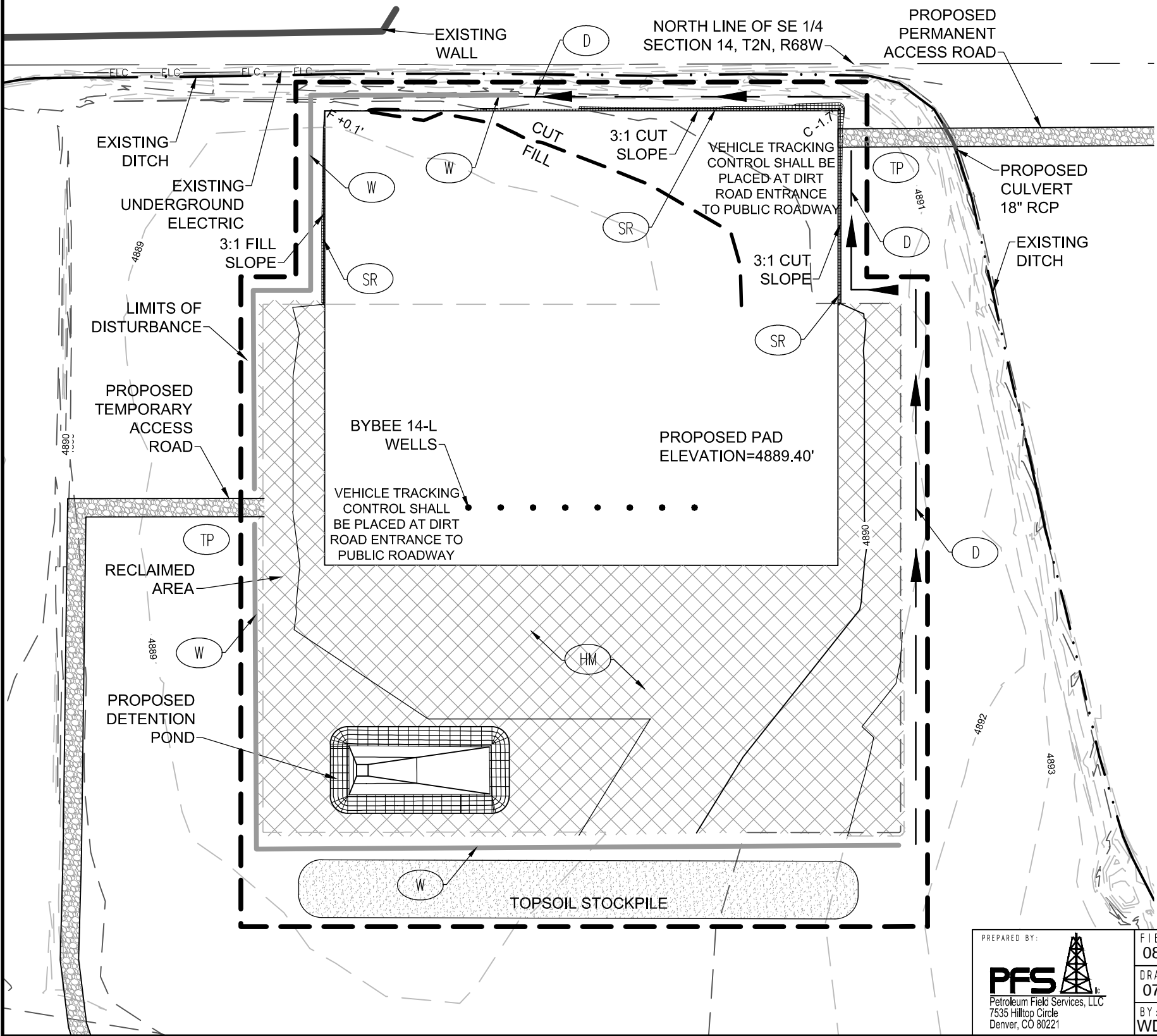


BYBEE 14-L PAD
PRODUCTION FACILITY PAD
EROSION AND SEDIMENT CONTROL PLAN

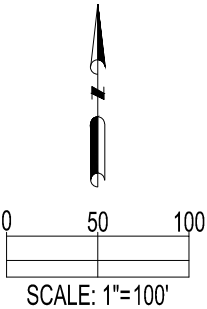


VICINITY MAP
NOT TO SCALE

LEGEND

- PROPOSED WELL
- (TP) TRACKING PAD
- (D) DITCH
- (W) WATTLES
- (SR) SOIL ROUGHENING
- (HM) HYDRO-MULCH
- [X] RECLAIMED AREA

NOTE: SEE APPENDIX D OF FIELD-WIDE STORMWATER MANAGEMENT PLAN FOR OIL AND GAS OPERATIONS. DJ BASIN PROJECT AREA, FOR BMP DETAILS



PREPARED BY:
PFS
Petroleum Field Services, LLC
7535 Hilltop Circle
Denver, CO 80221

FIELD DATE:
08-27-14
DRAWING DATE:
07-31-15
BY:
WDW
CHECKED BY:
JLG

SITE NAME:
BYBEE 14-L PAD
SURFACE LOCATION:
NE 1/2 SE 1/4, SEC. 14, T2N, R68W, 6TH P.M.
WELD COUNTY, COLORADO

PREPARED FOR:
EXTRACTION
Oil & Gas