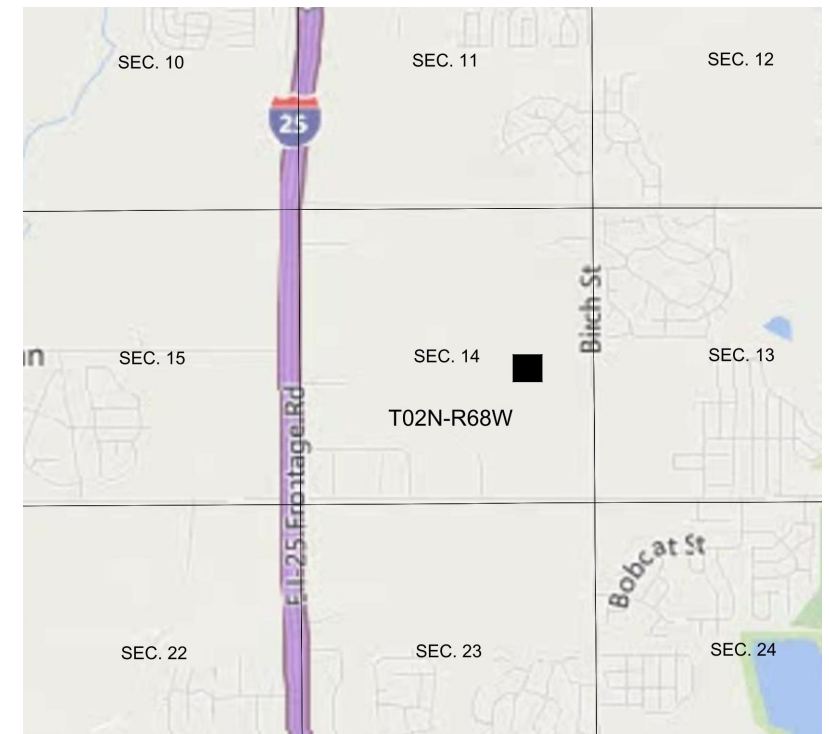
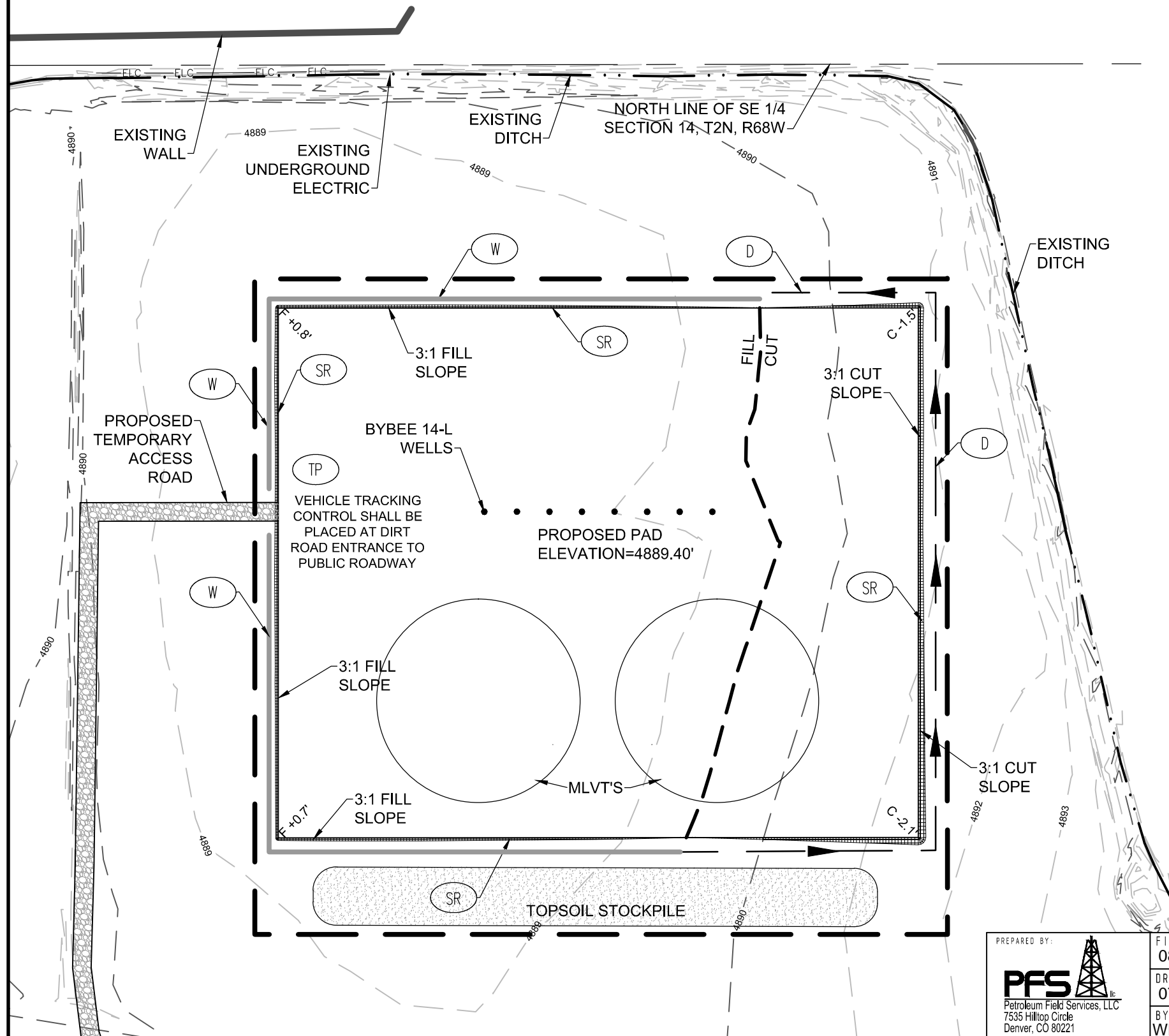


**BYBEE 14-L PAD
DRILLING PAD**

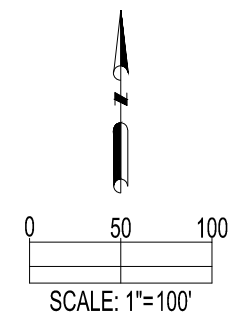


VICINITY MAP
NOT TO SCALE

LEGEND

- PROPOSED WELL
- TP TRACKING PAD
- D DITCH
- W WATTLES
- SR SOIL ROUGHENING

NOTE: SEE APPENDIX D OF FIELD-WIDE
STORMWATER MANAGEMENT PLAN FOR OIL AND
GAS OPERATIONS. DJ BASIN PROJECT AREA, FOR
BMP DETAILS



PREPARED BY:

PFS  llc
Petroleum Field Services, LLC
7535 Hilltop Circle
Denver, CO 80221

FIELD DATE:
08-27-14

DRAWING DATE:
07-31-15

BY: WDW	CHECKED BY: JLG
------------	--------------------

SITE NAME:
BYBEE 14-L PAD

SURFACE LOCATION:
NE 1/2 SE 1/4, SEC. 14, T2N, R68W, 6TH P.M.
WELD COUNTY, COLORADO

PREPARED FOR:

