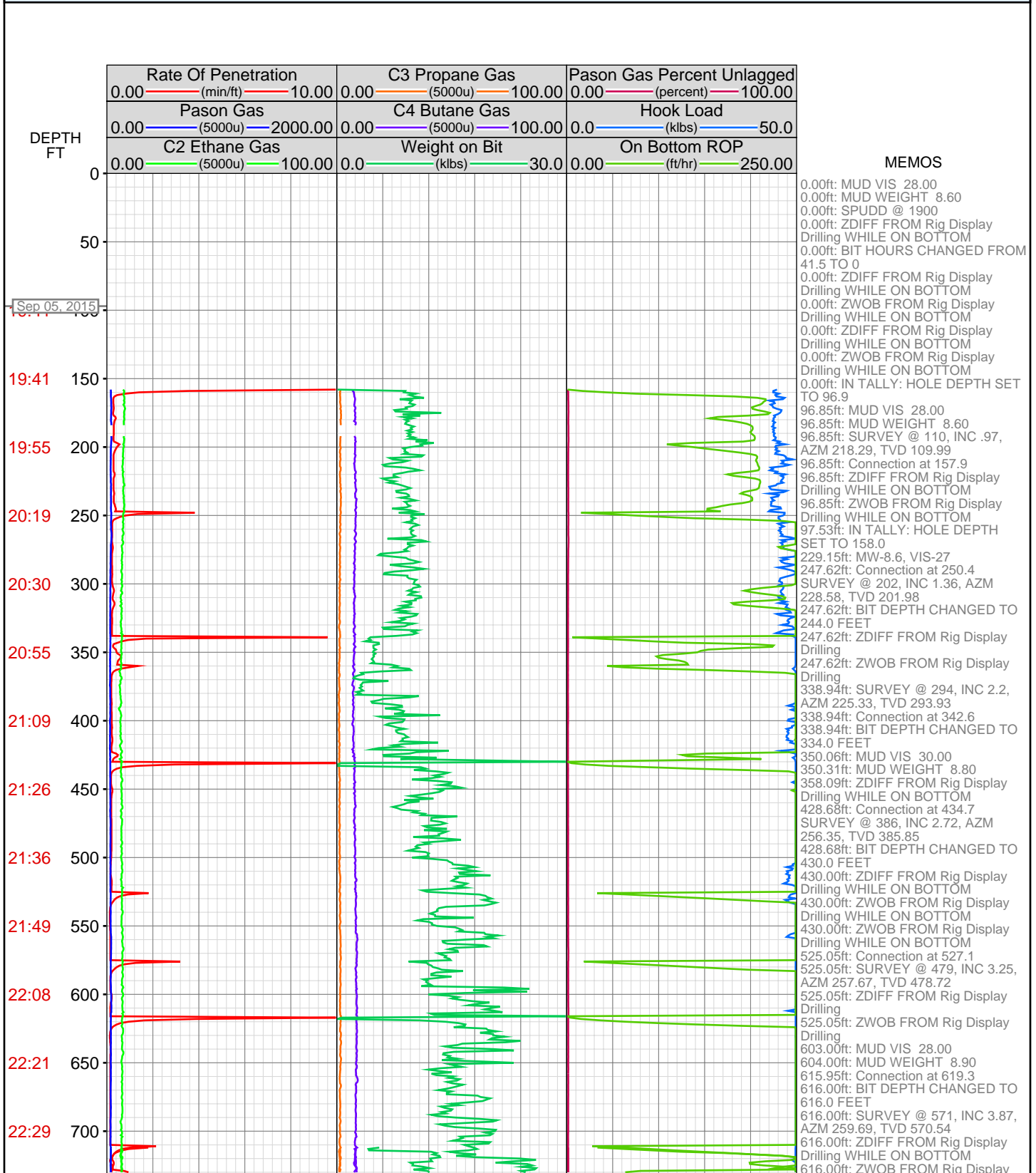
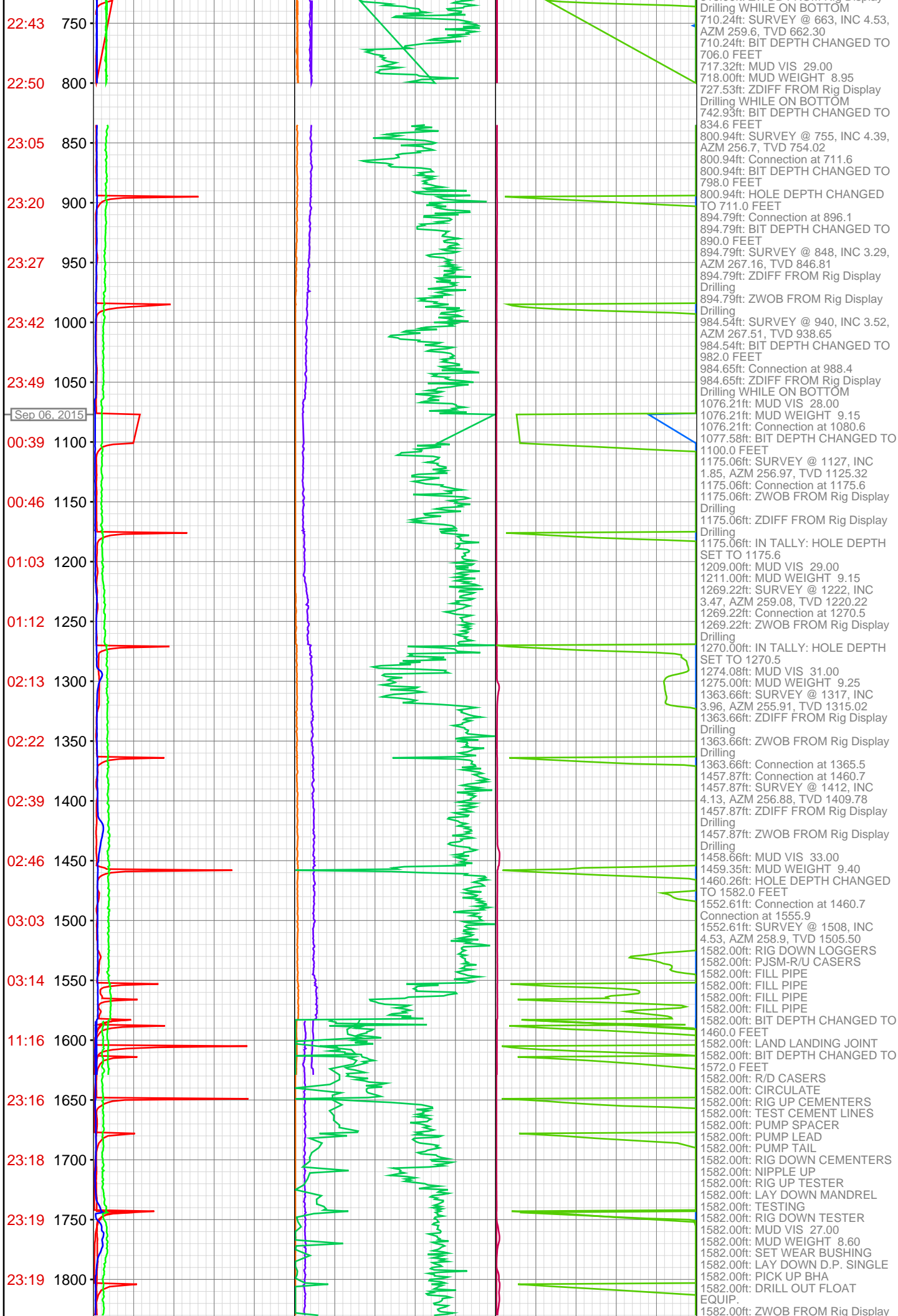
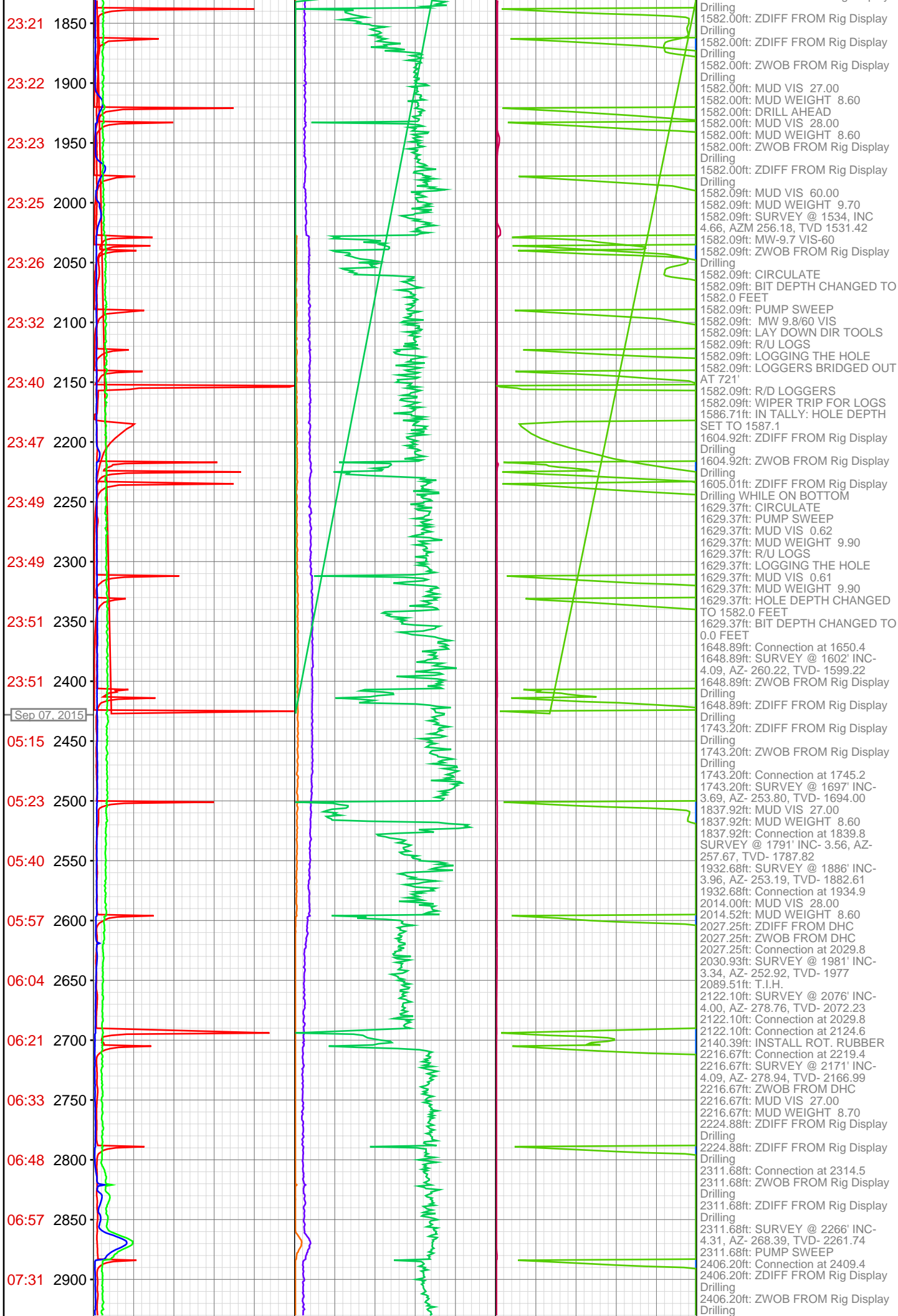


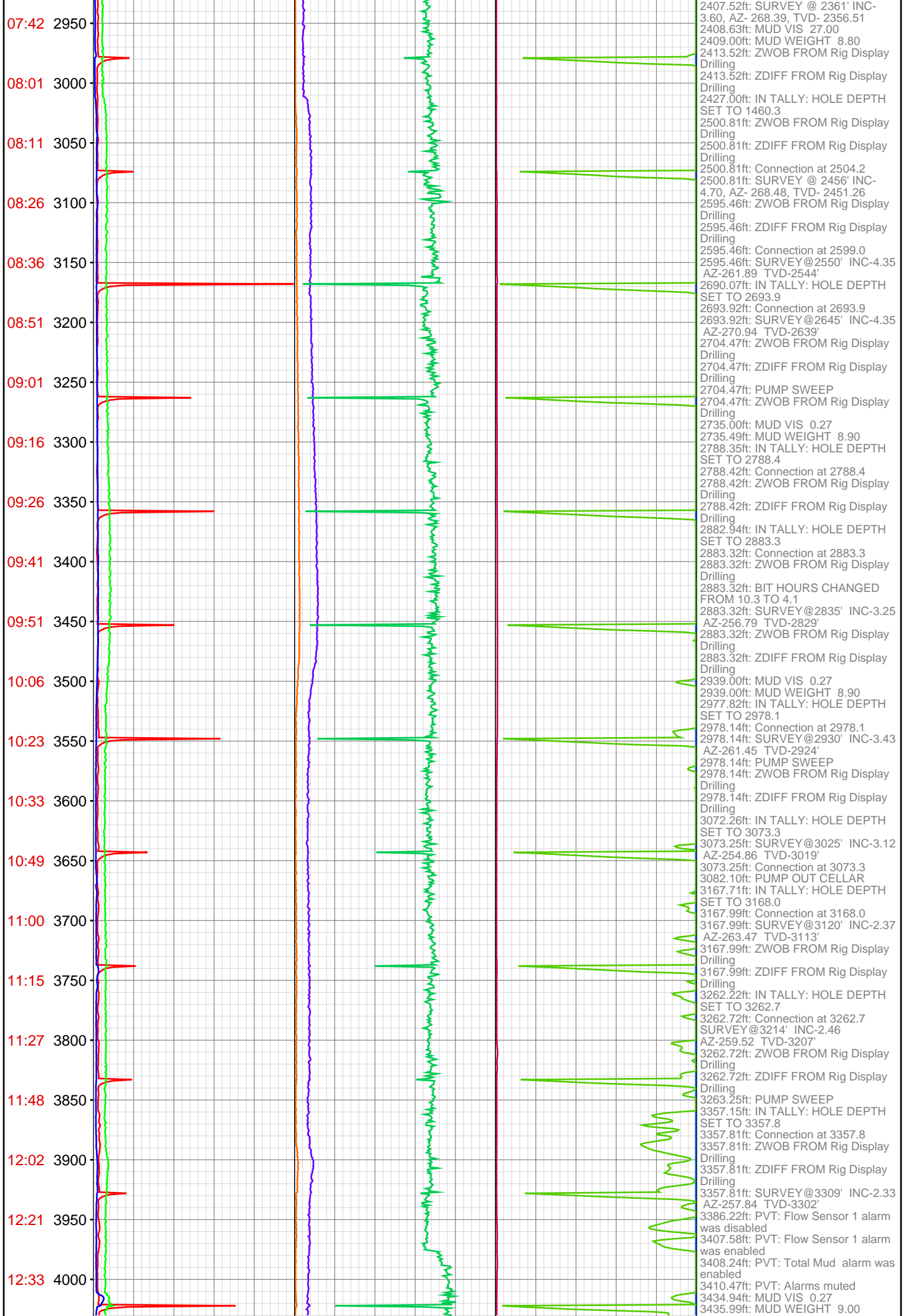
OPERATOR: Piceance Energy, LLC
WELL: PICEANCE 28-07W
FIELD:
LOCATION: SEC 28 TWP 9S RNG 93W
COUNTRY: USA
RIG: Pat-UTI 306

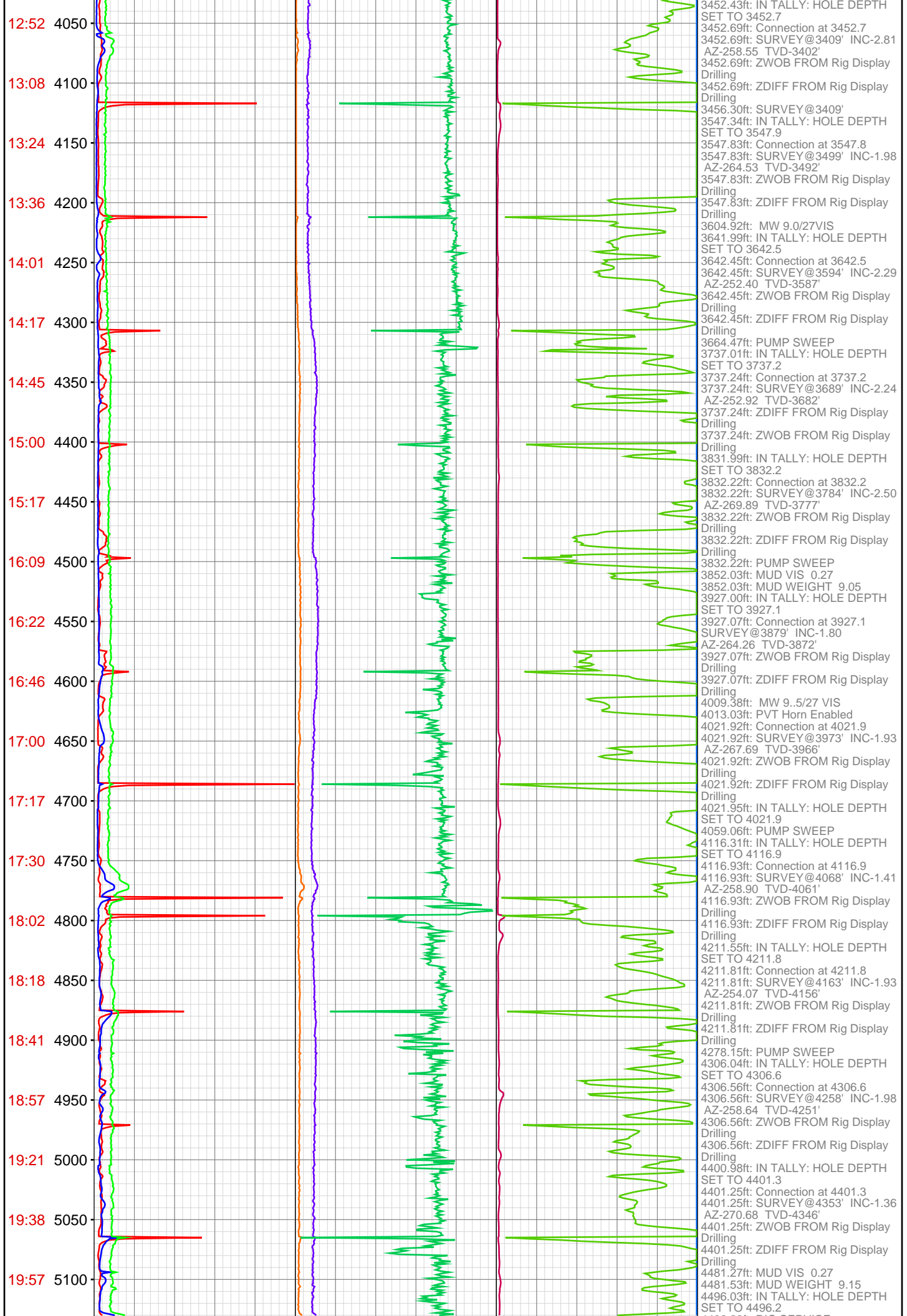
CONTRACTOR: Patterson-UTI Drilling Company
UNIQUE WELL ID: 05-077-09775-00
SPUD DATE: Sep 05, 2015 19:00
RELEASE DATE:

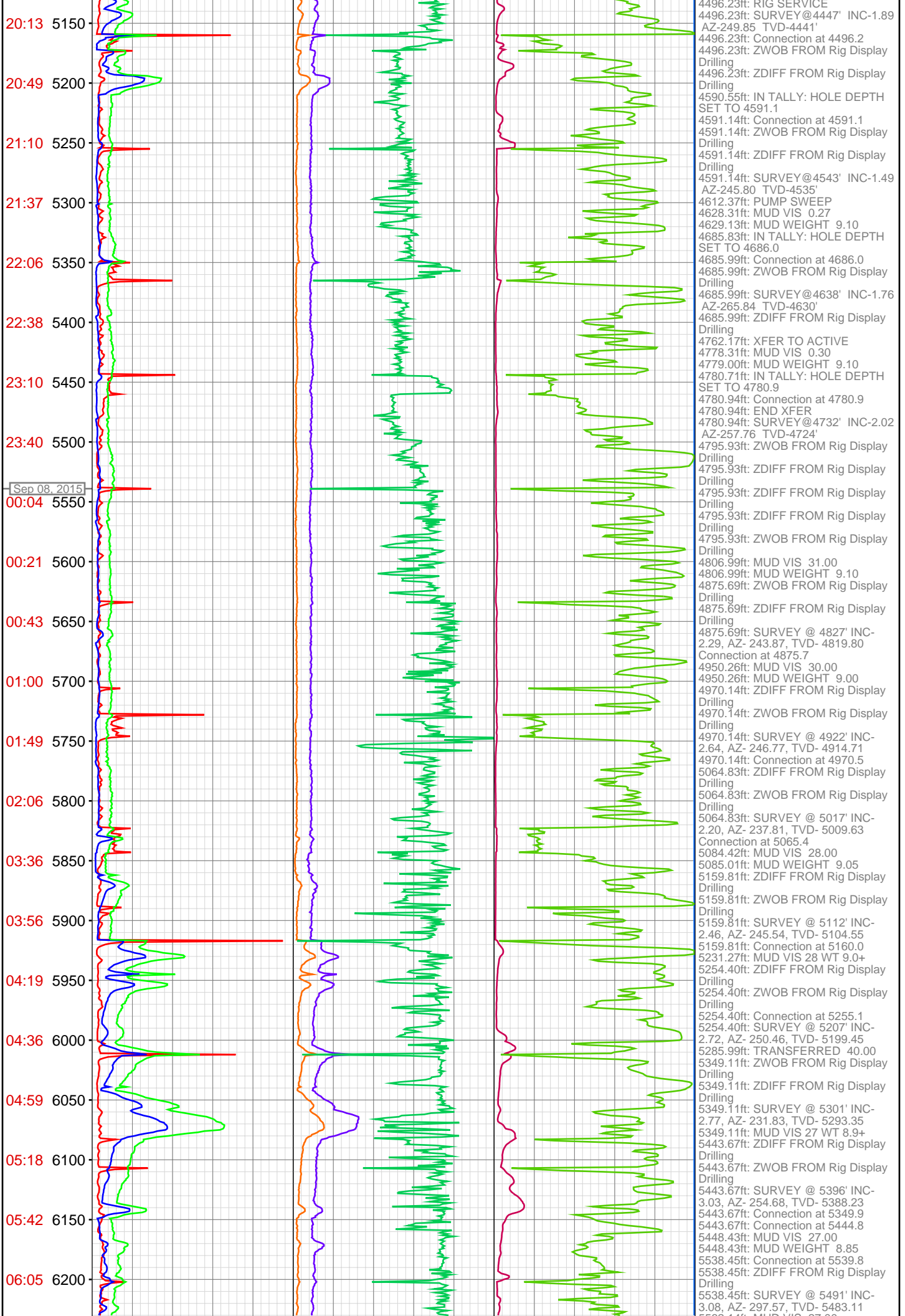


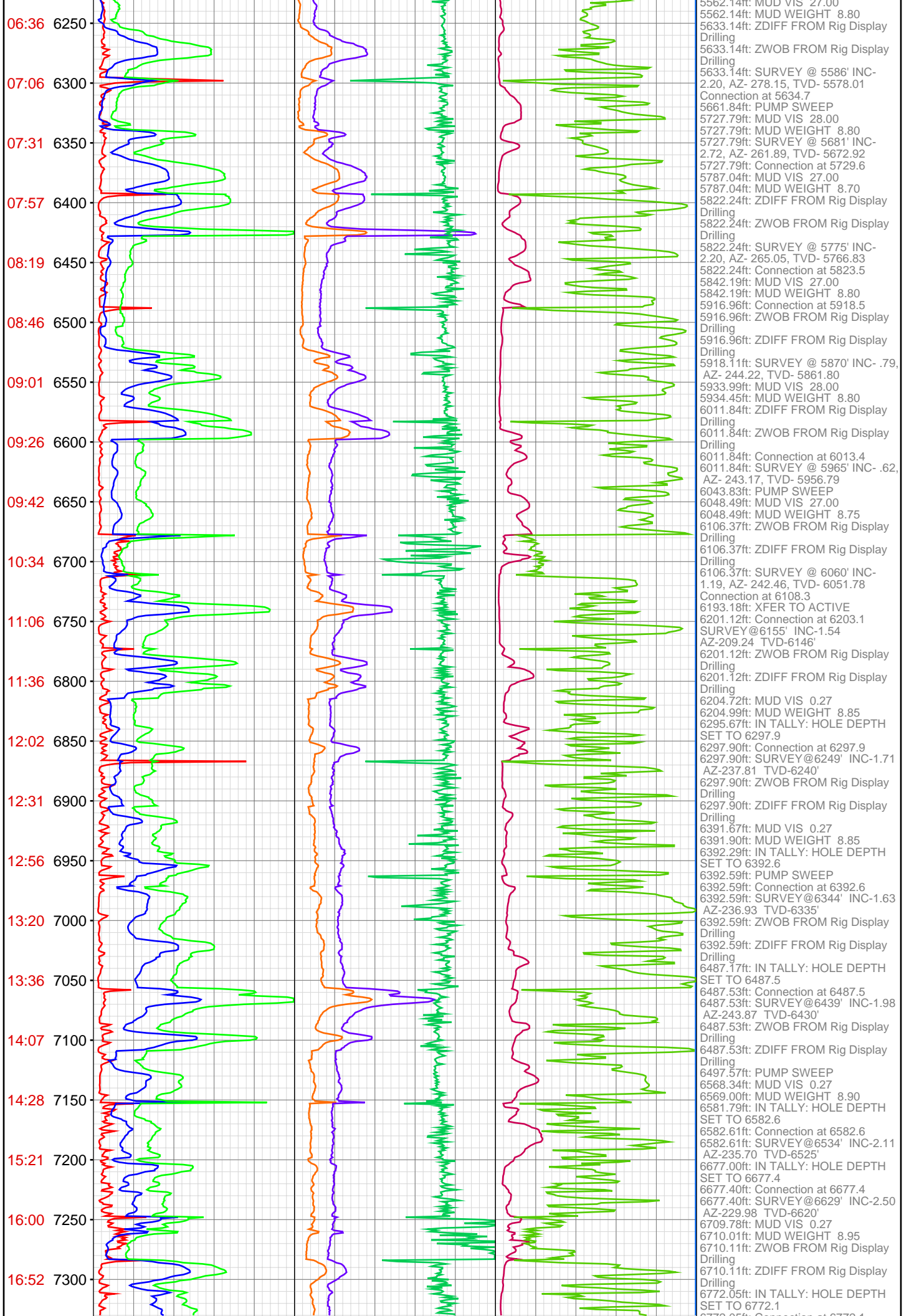


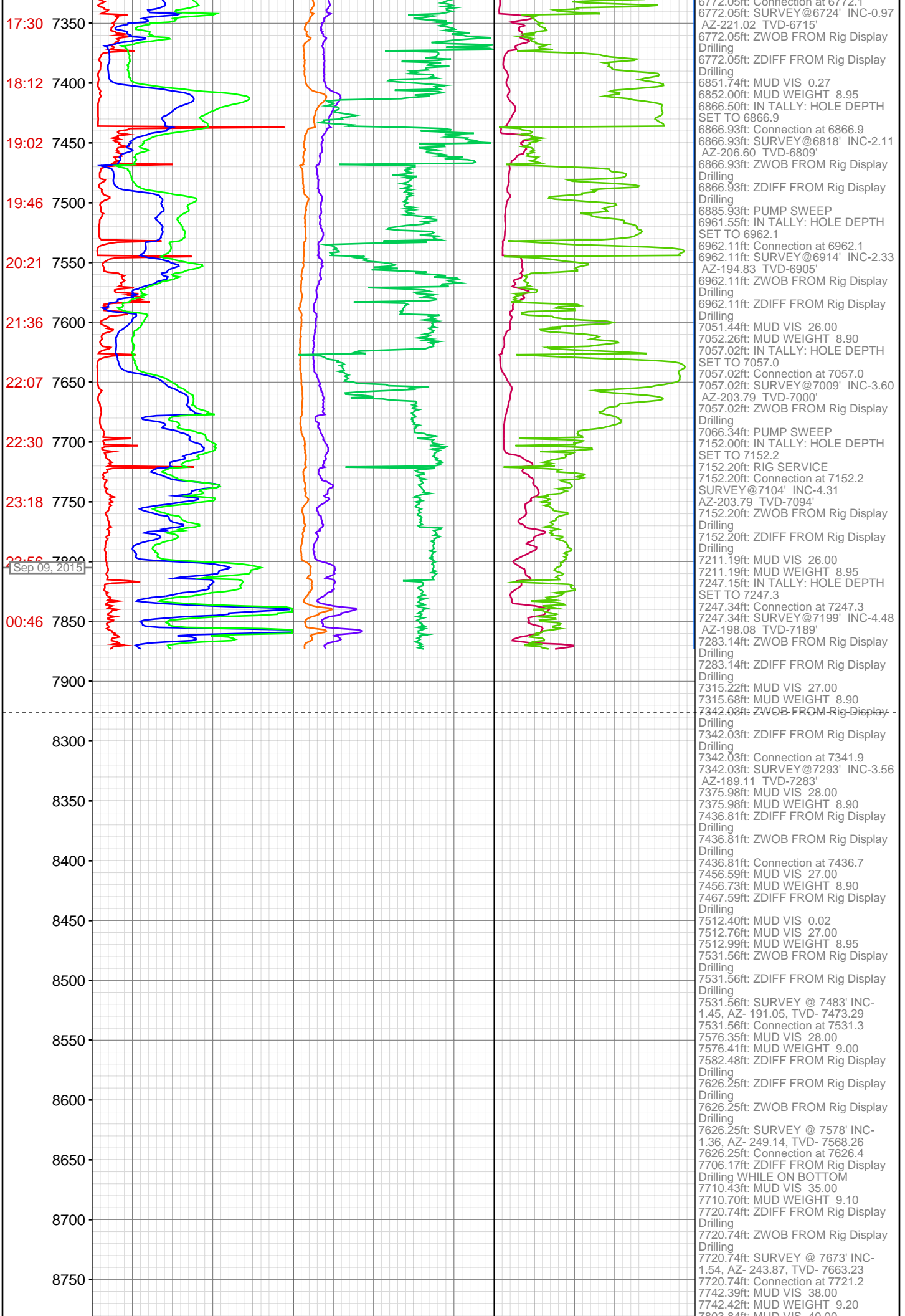












| | |
|------|---|
| 8800 | 7803.84ft: MUD VIS 40.00 7804.07ft: MUD WEIGHT 9.40 7815.06ft: Connection at 7816.1 7815.06ft: ZWOB FROM Rig Display Drilling 7815.06ft: ZDIFF FROM Rig Display Drilling 7815.06ft: SURVEY @ 7768' INC-1.05, AZ- 238.07, TVD- 7758.21 7816.14ft: IN TALLY: HOLE DEPTH SET TO 7816.1 7873.26ft: MUD VIS 60.00 7873.26ft: MUD WEIGHT 9.70 7873.26ft: SURVEY @ 7825' INC-1.54, AZ- 263.56, TVD- 7815.19 7873.26ft: MUD VIS 59.00 7873.26ft: MUD WEIGHT 9.70 7873.26ft: ZWOB FROM Rig Display Drilling 7873.26ft: ZDIFF FROM Rig Display Drilling 7873.26ft: ZDIFF FROM Rig Display Drilling 7873.26ft: MUD VIS 60.00 7873.26ft: MUD WEIGHT 9.70 7873.26ft: BIT DEPTH CHANGED TO 7872.0 FEET 7873.26ft: PUMP SWEEP 7873.26ft: ZDIFF FROM Rig Display Drilling 7873.26ft: PUMP PILL 8302.40ft: ATTEMPTED TO ZERO TOTAL STROKES ATTEMPTED TO SET HOLE DEPTH TO 0.00 FEET |
| 8850 | |
| 8900 | |
| 8950 | |
| 9000 | |
| 9050 | |
| 9100 | |