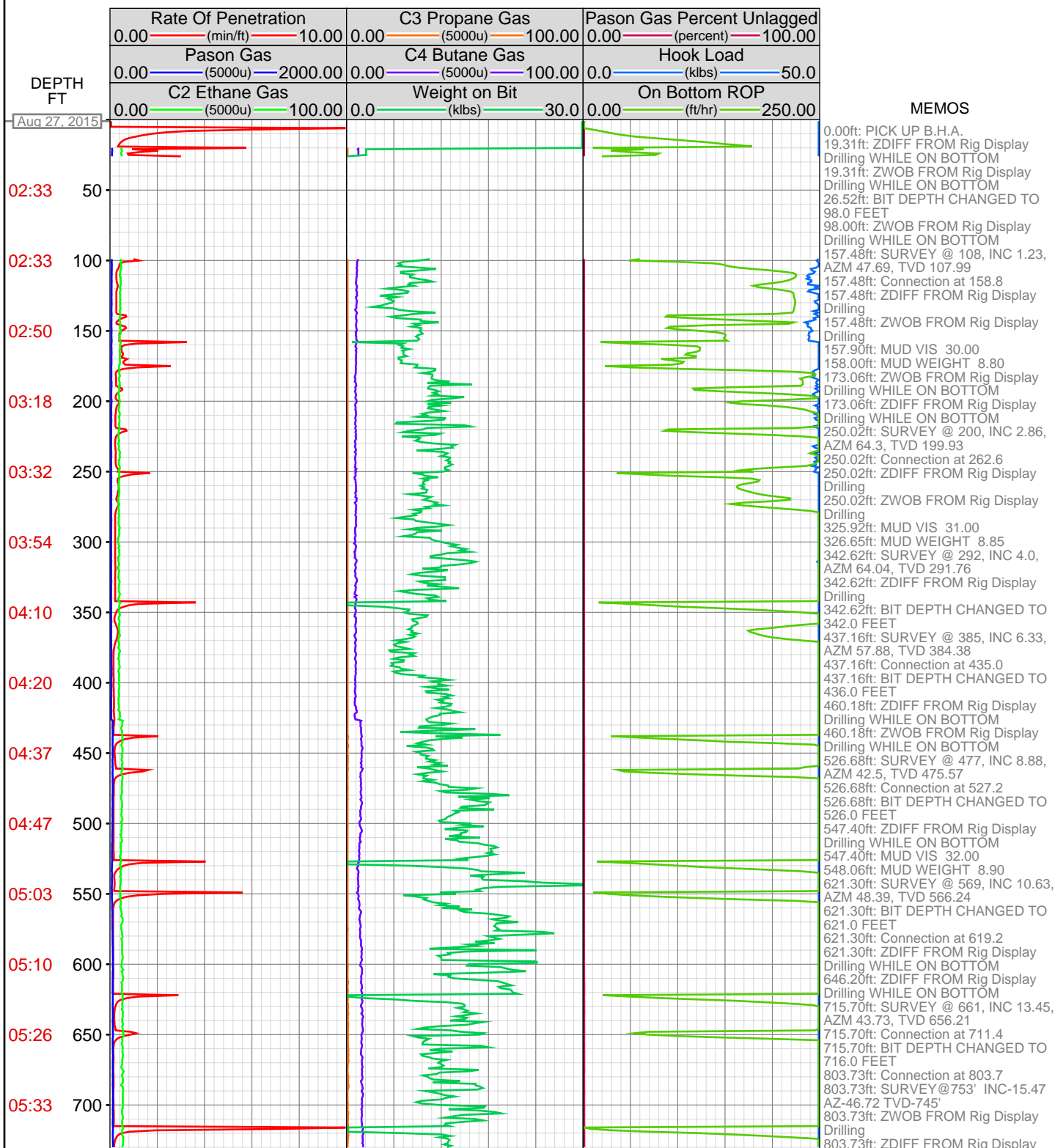
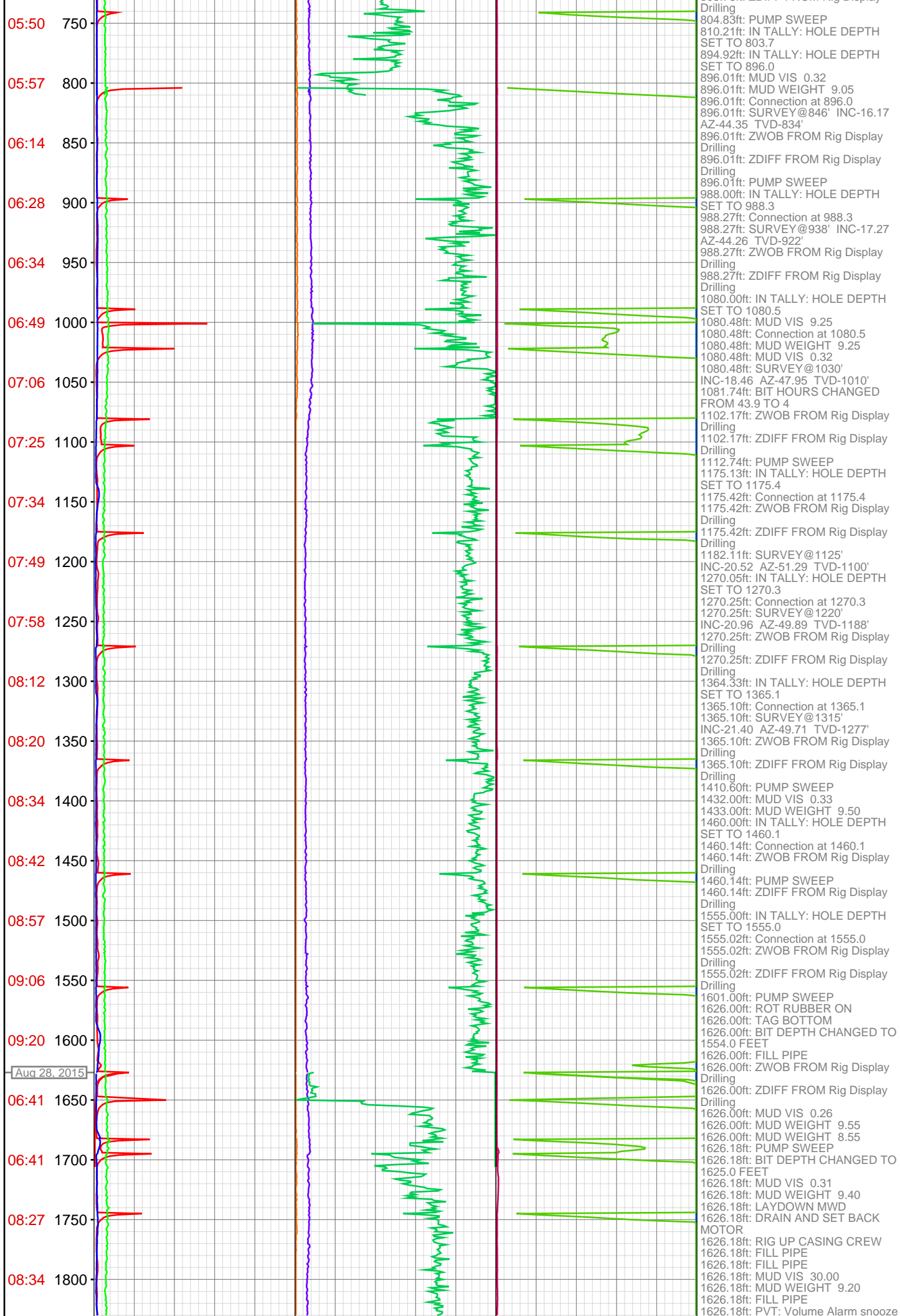
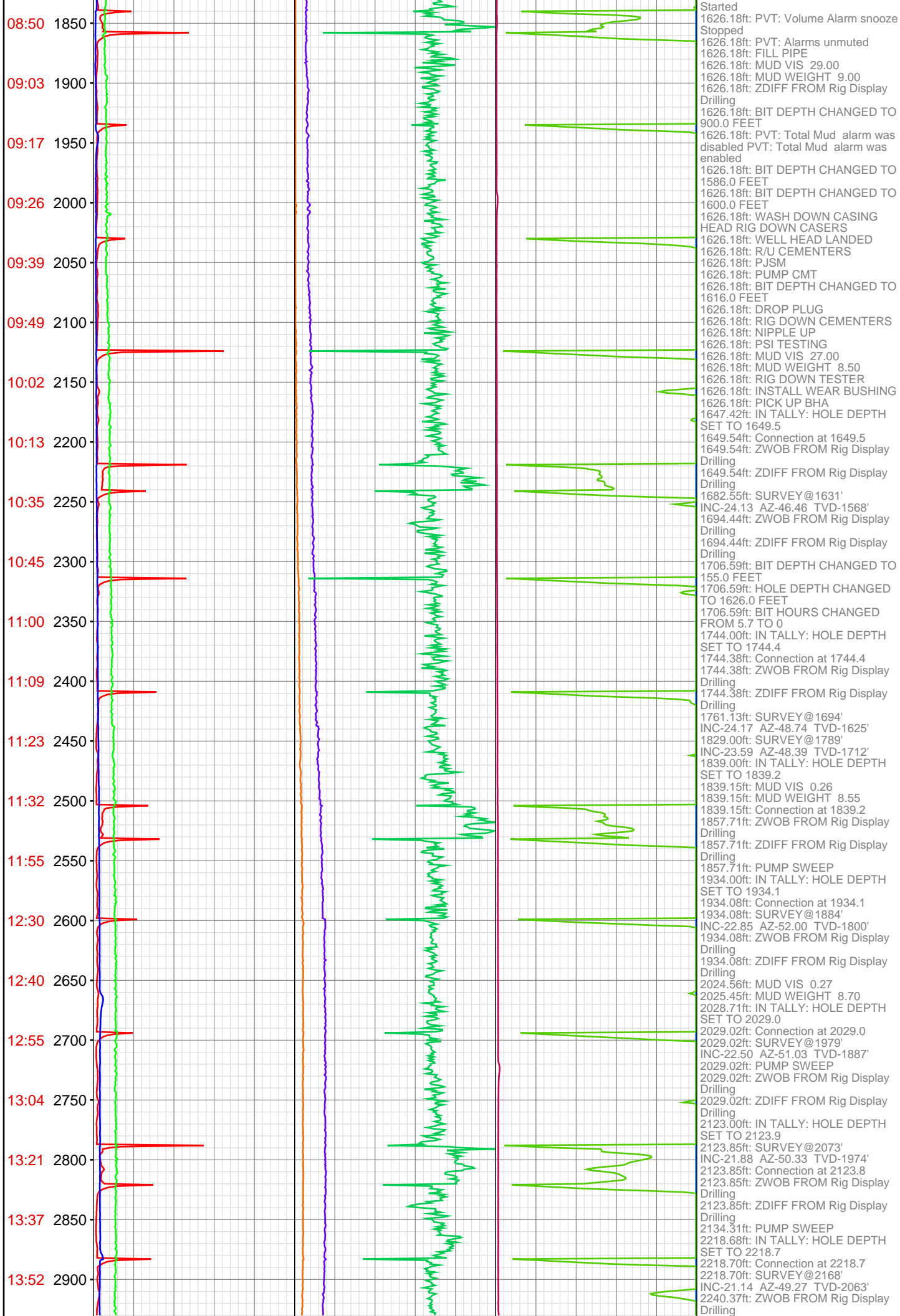


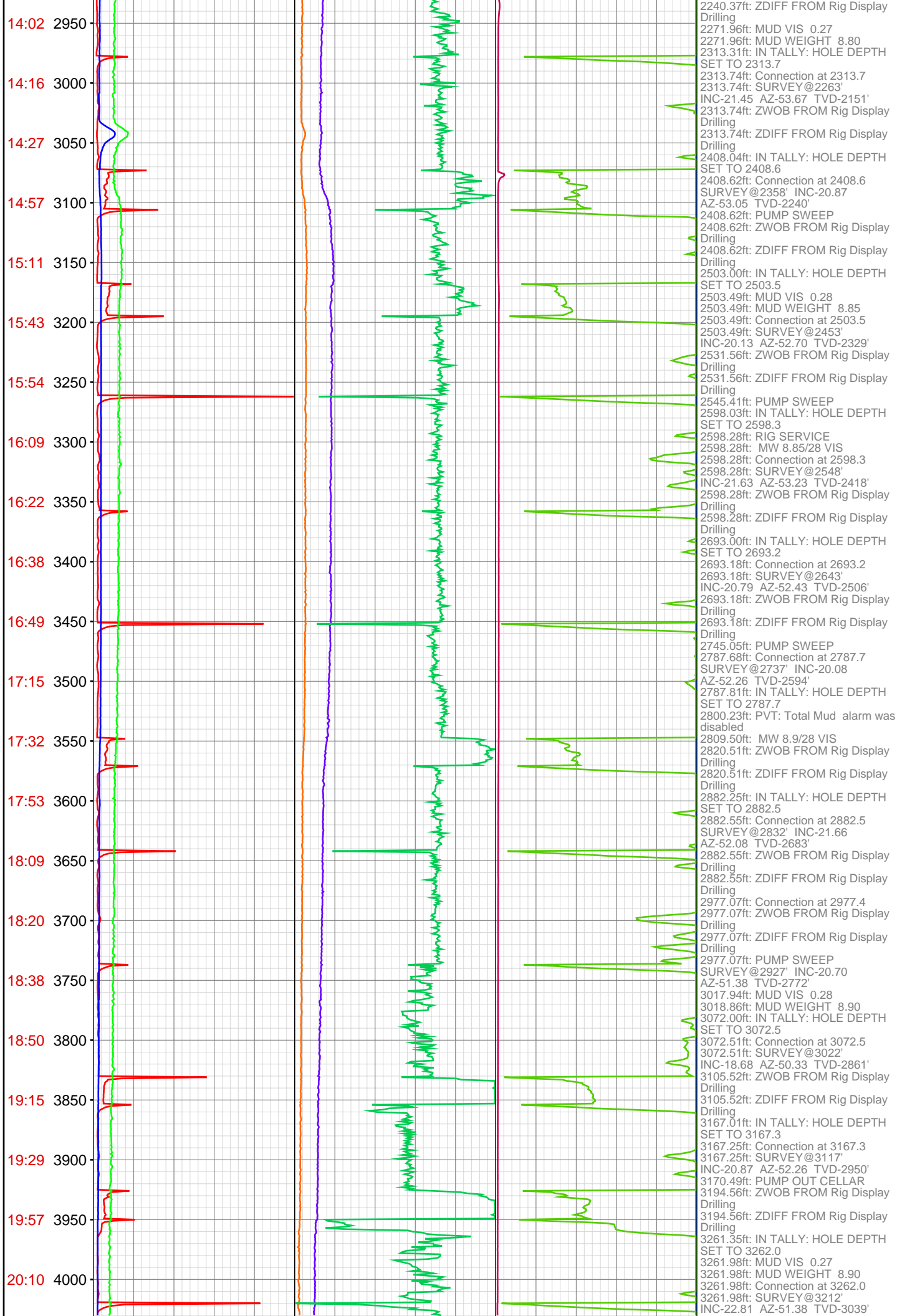
OPERATOR: Piceance Energy, LLC
WELL: PICEANCE FEDERAL 28-02M
FIELD:
LOCATION: SEC 28 TWP 9S RNG 93W
COUNTRY: USA
RIG: Pat-UTI 306

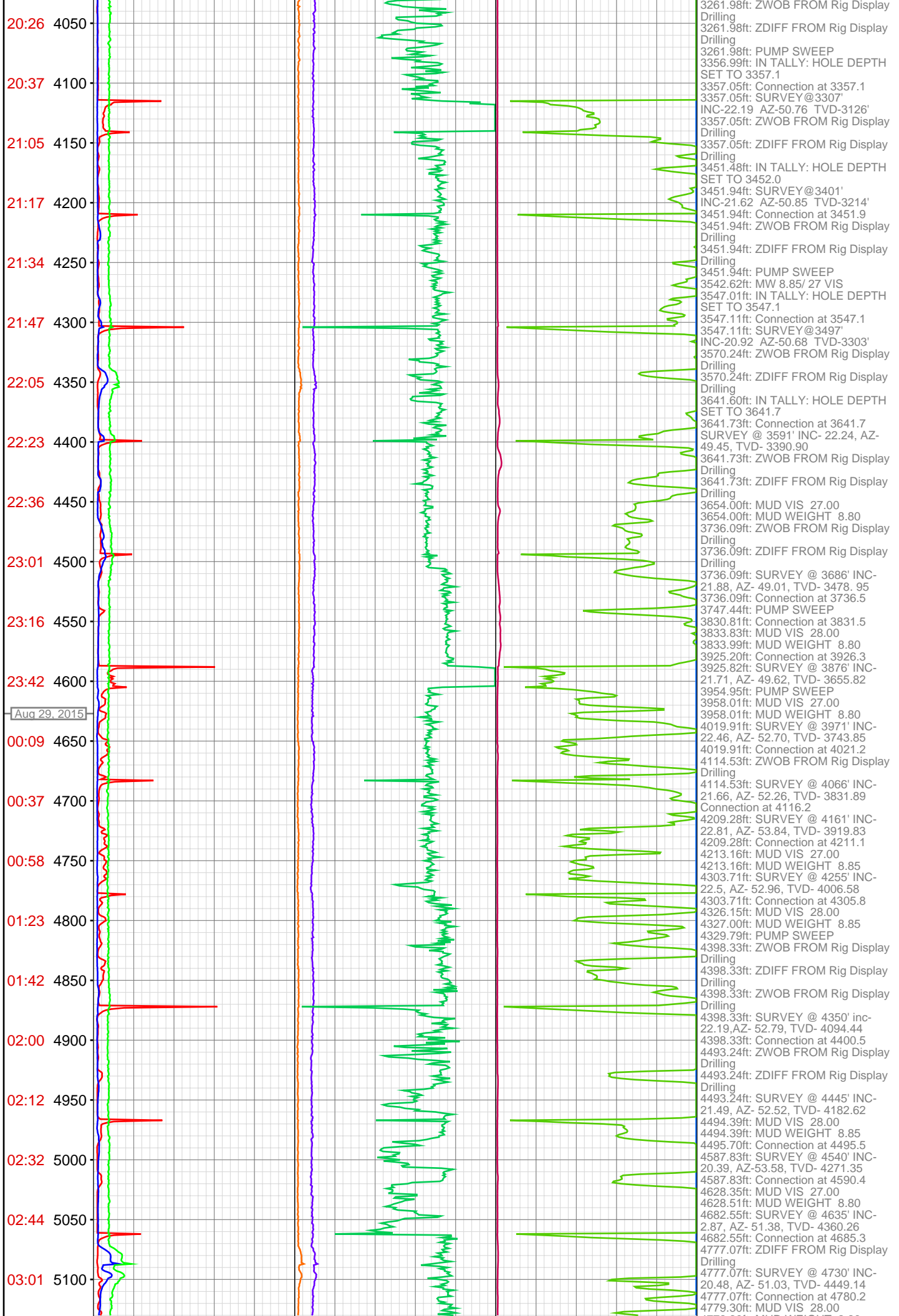
CONTRACTOR: Patterson-UTI Drilling Company
UNIQUE WELL ID: 05-077-10239-00
SPUD DATE: Aug 27, 2015 02:30
RELEASE DATE:

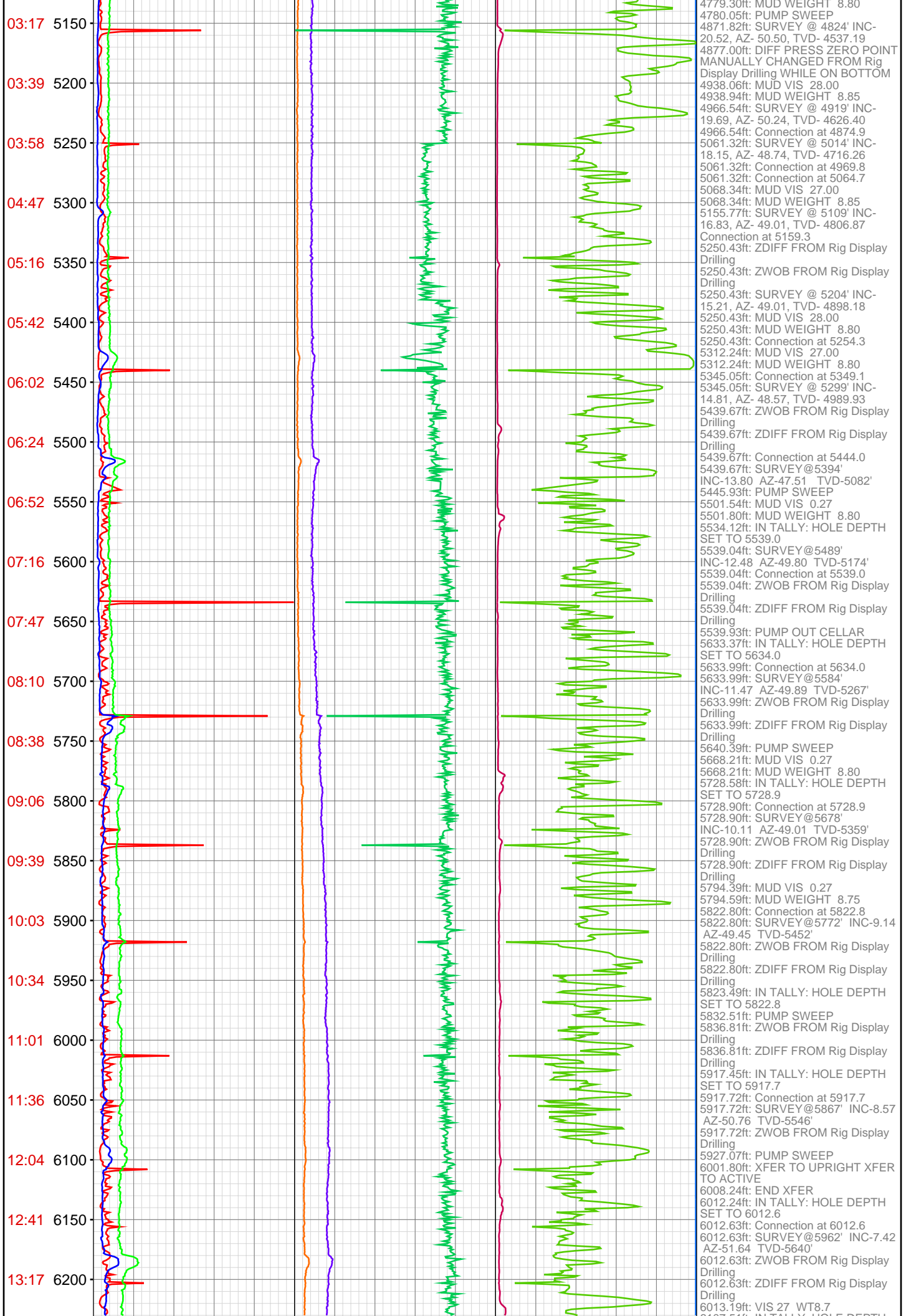


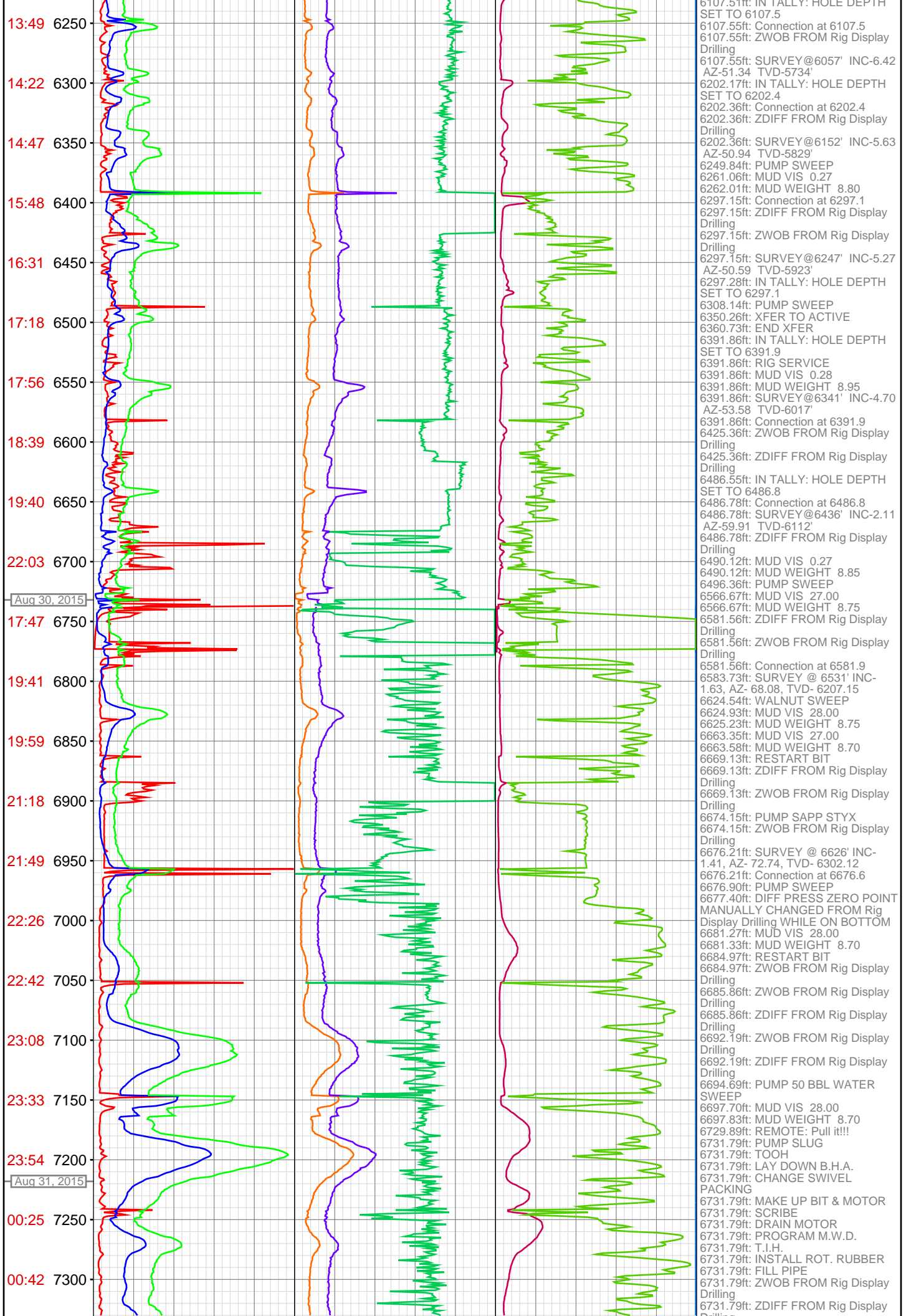


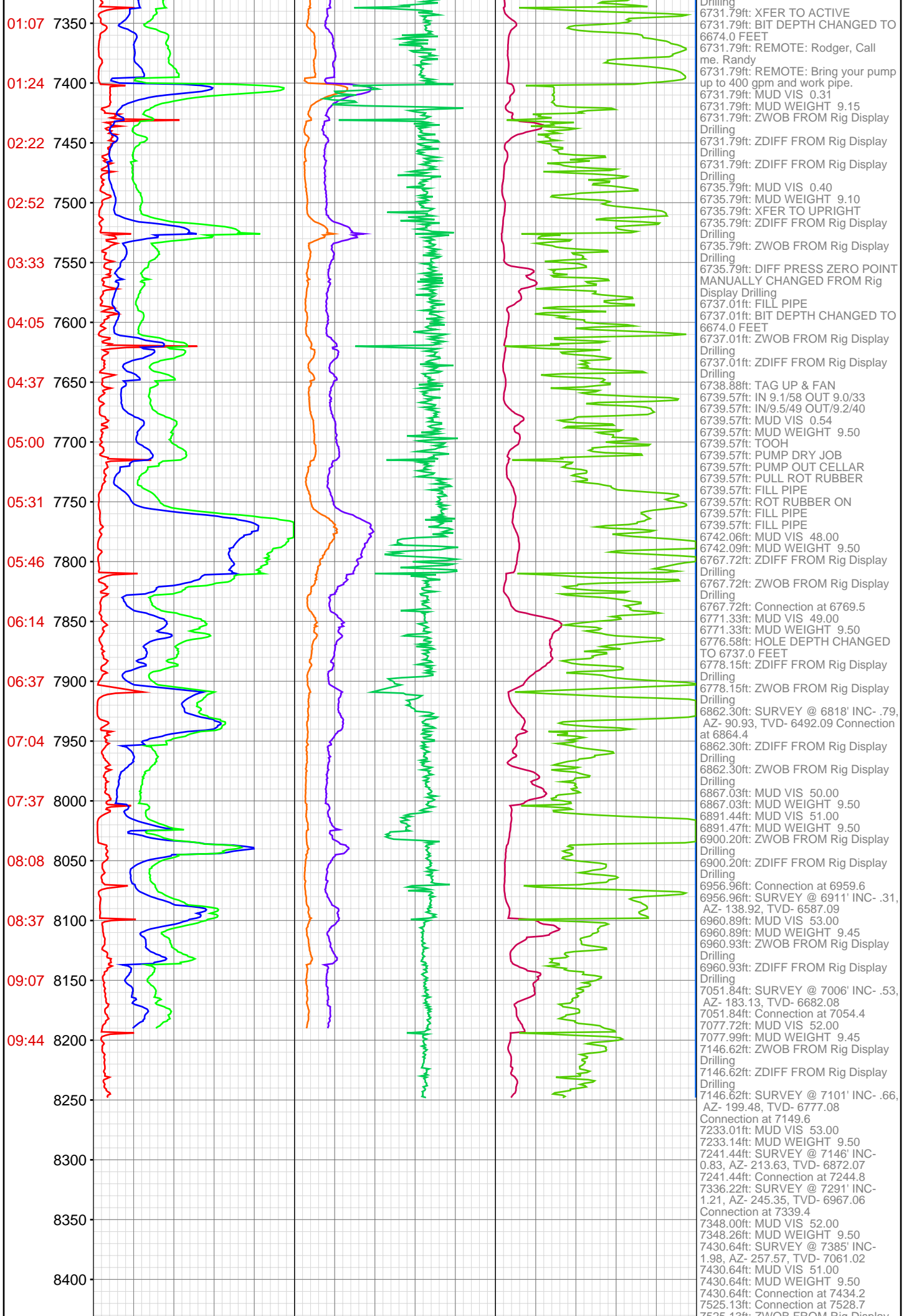












8450	7525.13ft: ZWOB FROM Rig Display Drilling
	7525.13ft: ZDIFF FROM Rig Display Drilling
	7525.72ft: SURVEY @ 7480' INC-2.55, AZ- 252.47, TVD- 7155.95
	7526.41ft: MUD VIS 53.00
	7526.41ft: MUD WEIGHT 9.60
	7588.32ft: MUD VIS 54.00
	7588.32ft: MUD WEIGHT 9.60
	7619.72ft: Connection at 7623.8
	7622.64ft: SURVEY @ 7575' INC-2.99, AZ- 242.37, TVD- 7250.83
	7697.01ft: MUD VIS 53.00
	7697.34ft: MUD WEIGHT 9.60
	7714.44ft: ZWOB FROM Rig Display Drilling
	7714.44ft: ZDIFF FROM Rig Display Drilling
	7714.44ft: SURVEY @ 7670' INC-2.77, AZ- 230.59, TVD- 7345.72
	7714.44ft: Connection at 7718.7
	7809.22ft: ZDIFF FROM Rig Display Drilling
	7809.22ft: ZWOB FROM Rig Display Drilling
	7809.22ft: Connection at 7813.5
	7809.22ft: SURVEY @ 7765' INC-3.12, AZ- 225.32, TVD- 7440.59
	7854.59ft: MUD VIS 0.55
	7855.09ft: MUD WEIGHT 9.70
	7903.67ft: IN TALLY: HOLE DEPTH SET TO 7908.3
	7908.30ft: Connection at 7908.3
	7908.30ft: SURVEY@7860' INC-2.77 AZ-218.28 TVD-7535'
	7908.30ft: ZWOB FROM Rig Display Drilling
	7908.30ft: ZDIFF FROM Rig Display Drilling
	7934.88ft: PUMP SWEEP
	8002.99ft: IN TALLY: HOLE DEPTH SET TO 8003.3
	8003.25ft: Connection at 8003.3
	8003.25ft: SURVEY@7955' INC-2.37 AZ-206.86 TVD-7630'
	8003.25ft: ZWOB FROM Rig Display Drilling
	8003.25ft: ZDIFF FROM Rig Display Drilling
	8098.00ft: IN TALLY: HOLE DEPTH SET TO 8098.2
	8098.23ft: Connection at 8098.2
	8098.23ft: MUD VIS 0.57
	8098.23ft: MUD WEIGHT 9.80
	8098.23ft: SURVEY@8050' INC-2.20 AZ-215.56 TVD-7725'
	8098.23ft: ZWOB FROM Rig Display Drilling
	8098.23ft: ZDIFF FROM Rig Display Drilling
	8101.87ft: PUMP SWEEP
	8103.97ft: BLOW DOWN FLOW LINE
	8151.97ft: WALK RIG
	8151.97ft: ATTEMPTED TO ZERO
	TOTAL STROKES ATTEMPTED TO
	SET HOLE DEPTH TO 0.00 FEET
	8193.01ft: IN TALLY: HOLE DEPTH SET TO 8193.2
	8193.21ft: Connection at 8193.2
	SURVEY@8145' INC-2.50
	AZ-216.44 TVD-7820'
	8193.21ft: ZWOB FROM Rig Display Drilling
	8193.21ft: ZDIFF FROM Rig Display Drilling
	8229.23ft: MUD VIS 0.57
	8229.40ft: MUD WEIGHT 9.85