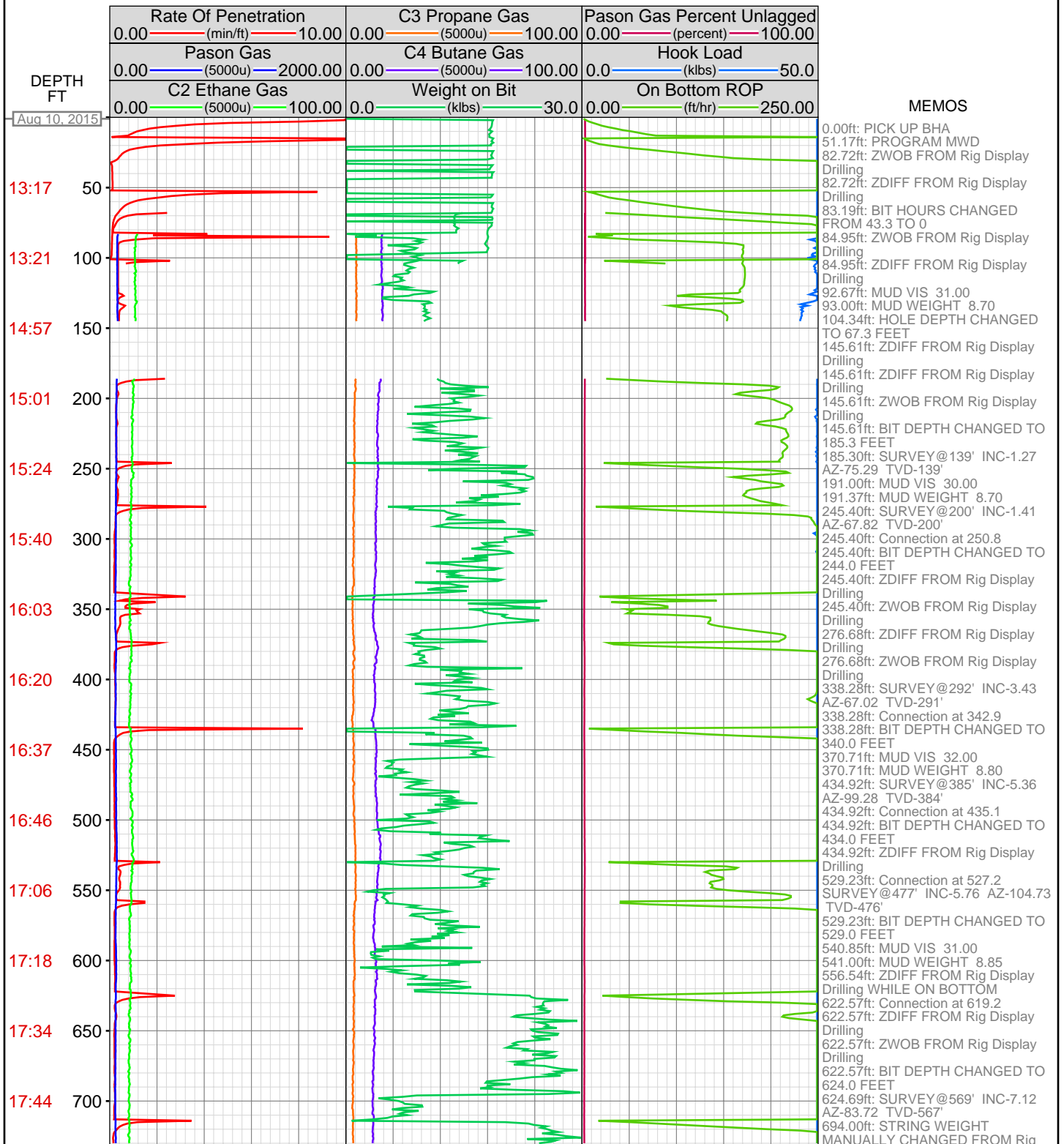
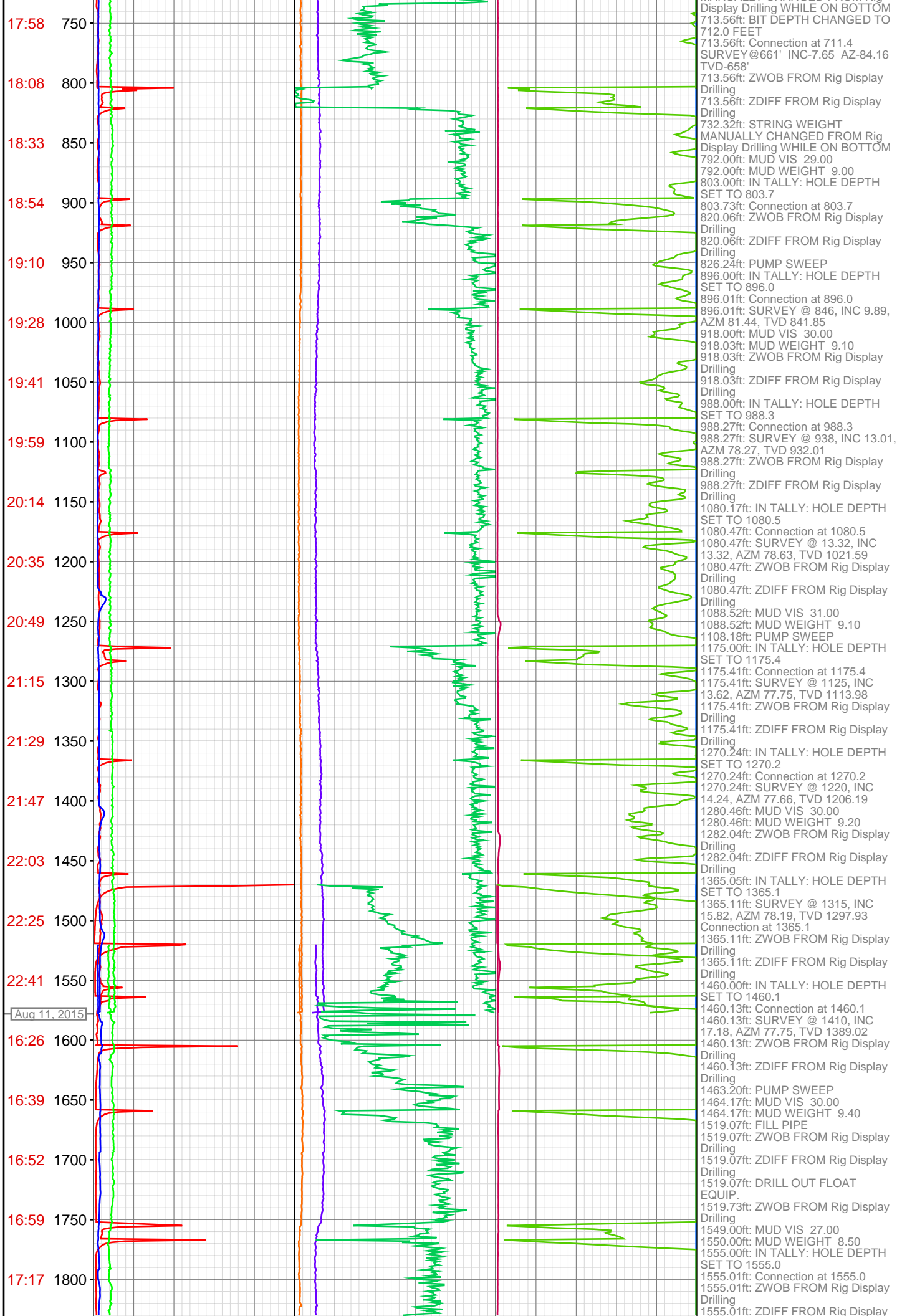
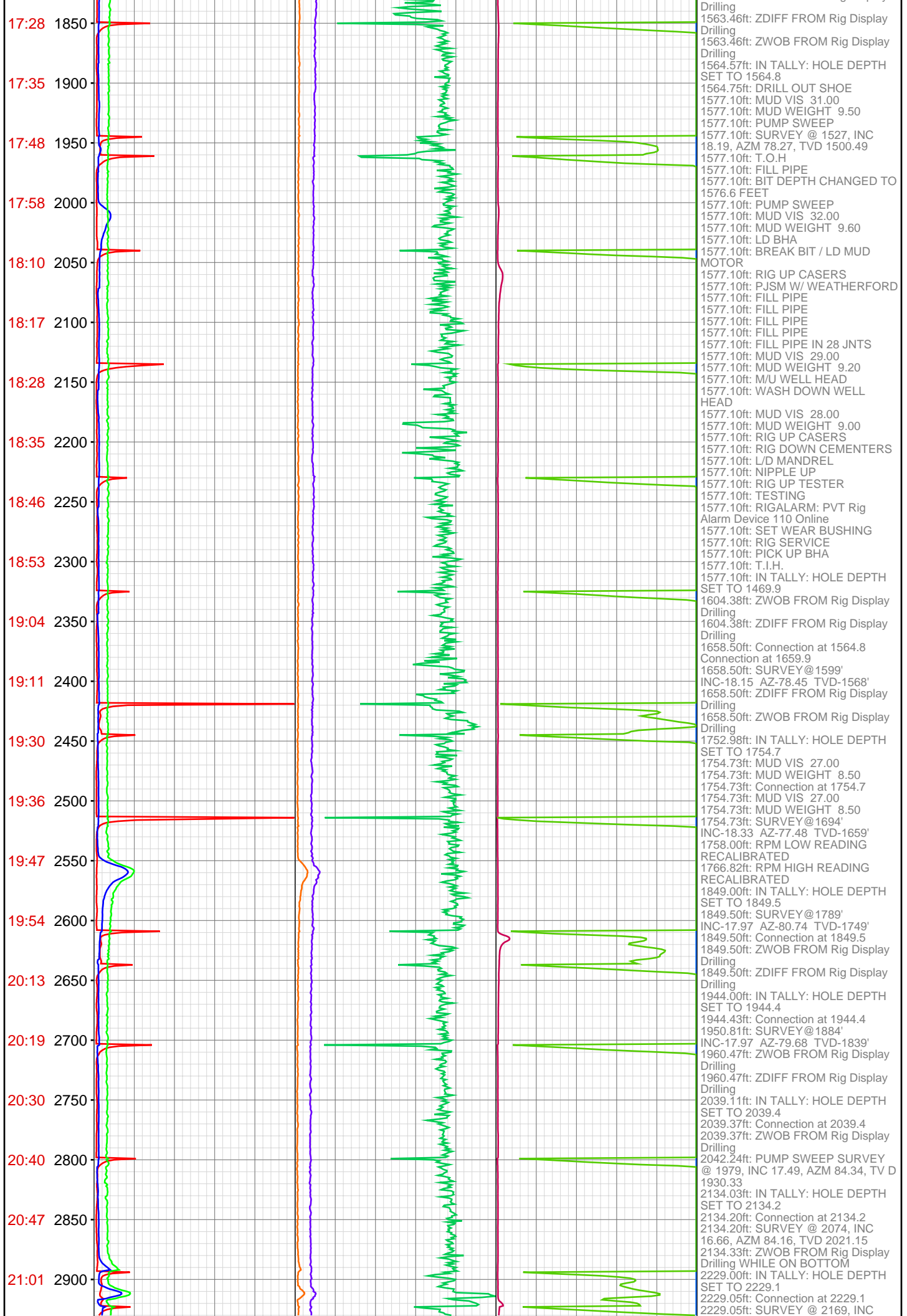


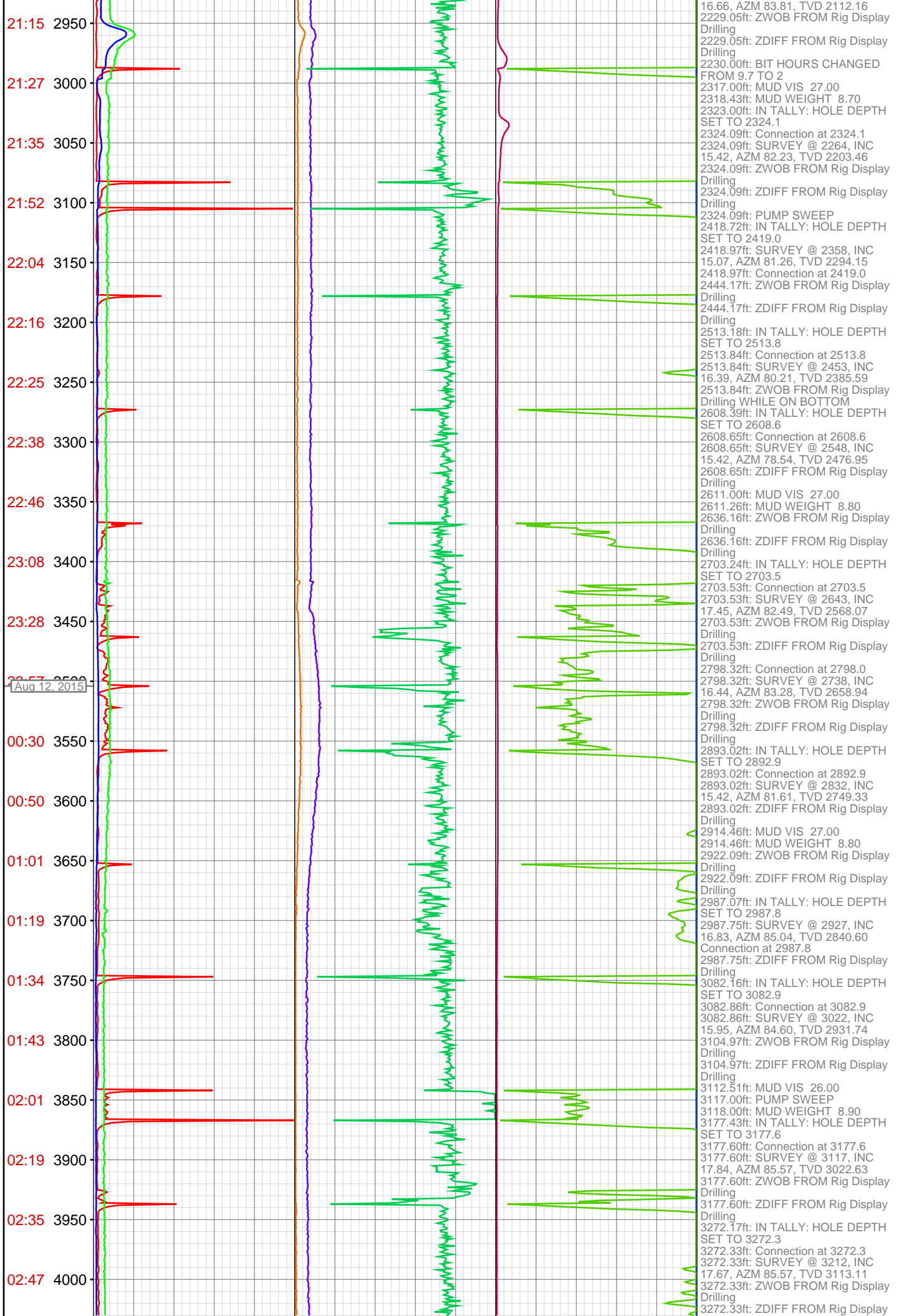
OPERATOR: Piceance Energy, LLC
WELL: PICEANCE 28-06M
FIELD:
LOCATION: SEC 28 TWP 9S RNG 93W
COUNTRY: USA
RIG: Pat-UTI 306

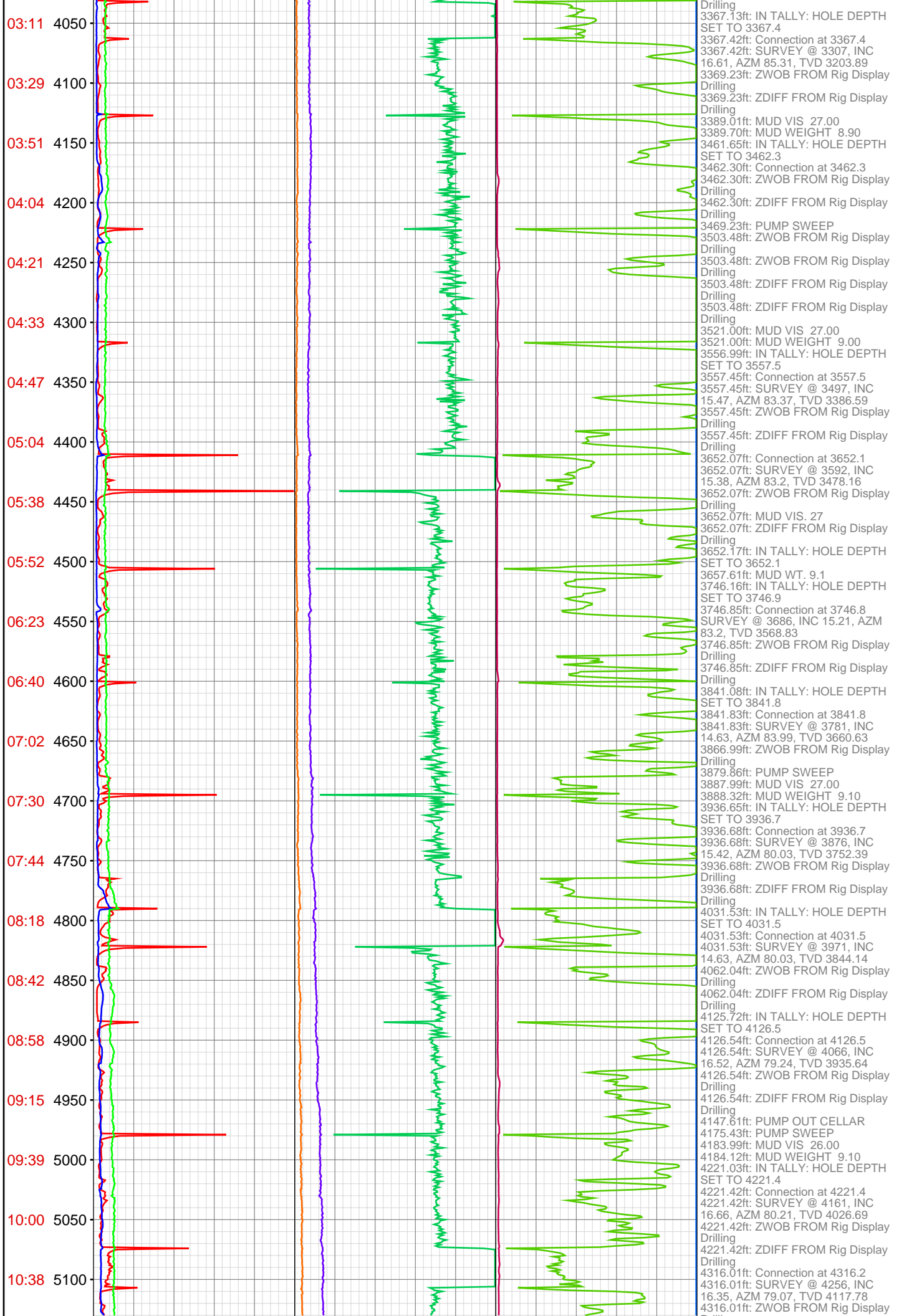
CONTRACTOR: Patterson-UTI Drilling Company
UNIQUE WELL ID: 05-077-09779-00
SPUD DATE: Aug 10, 2015 14:00
RELEASE DATE:

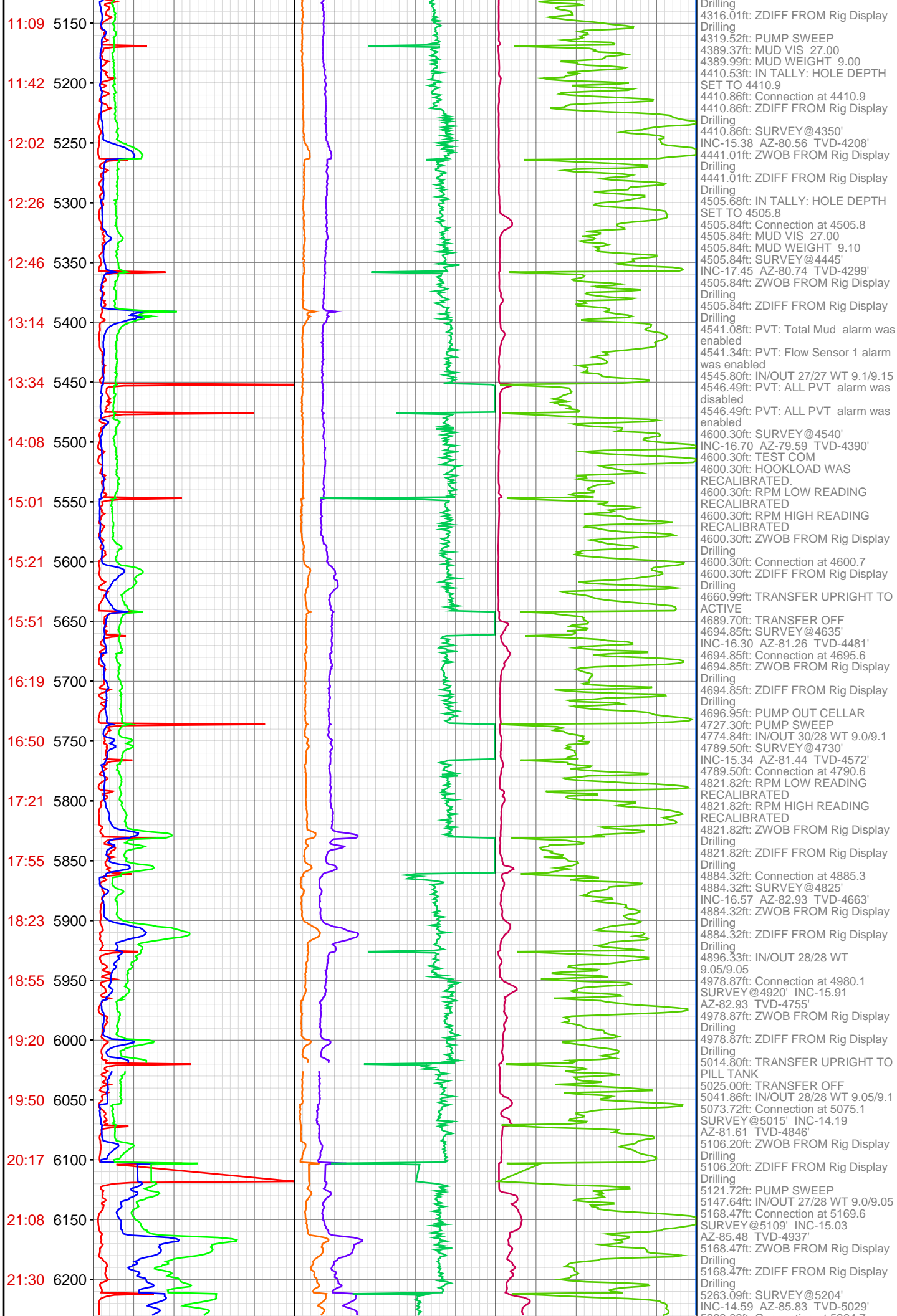


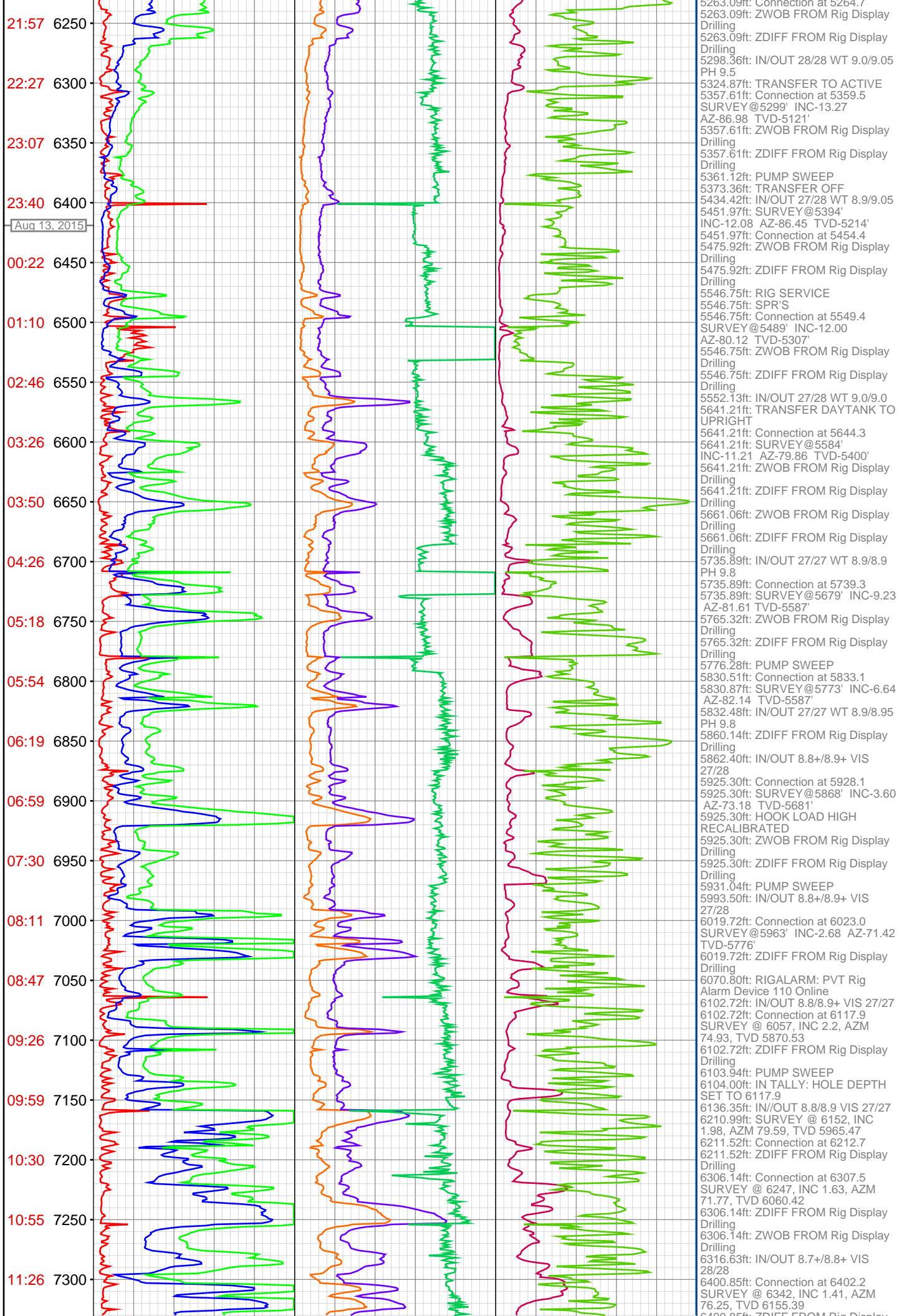


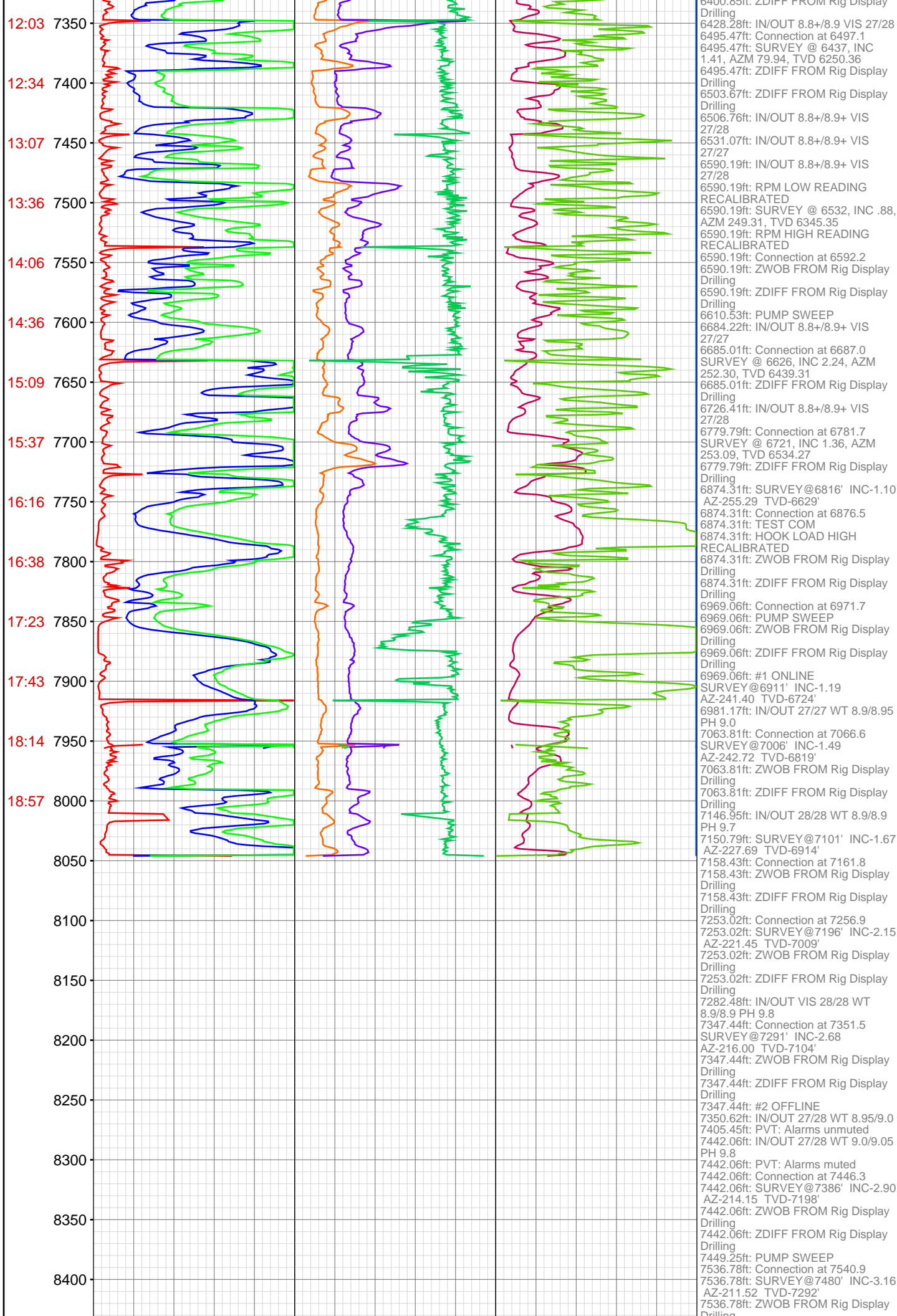












8450	Drilling 7536.78ft: ZDIFF FROM Rig Display 7557.41ft: TRANSFER NOV TO ACTIVE 7591.96ft: TRANSFER DAYTANK TO ACTIVE 7601.97ft: IN/OUT 34/32 WT 9.1/9.15 PH 9.8 7631.76ft: Connection at 7636.0 SURVEY@7575' INC-3.34 AZ-215.47 TVD-7387'
8500	7631.76ft: ZWOB FROM Rig Display Drilling 7631.76ft: ZDIFF FROM Rig Display Drilling 7677.66ft: TRANSFER OFF 7726.44ft: SURVEY@7670' INC-3.21 AZ-222.50 TVD-7482'
8550	7726.44ft: Connection at 7730.8 7726.44ft: RPM LOW READING RECALIBRATED 7726.44ft: RPM HIGH READING RECALIBRATED 7726.44ft: HOOK LOAD HIGH RECALIBRATED 7726.44ft: ZWOB FROM Rig Display Drilling
8600	7726.44ft: ZDIFF FROM Rig Display Drilling 7742.88ft: IN/OUT 40/38 WT 9.4/9.45 7819.91ft: IN/OUT 57/42 WT 9.5/9.55 PH 9.8
8650	7821.10ft: SURVEY@7765' INC-3.38 TVD-222.94 TVD-7577'
8700	7821.10ft: ZWOB FROM Rig Display Drilling 7821.10ft: ZDIFF FROM Rig Display Drilling 7824.80ft: Connection at 7825.7 7833.99ft: ATTEMPTED TO ZERO TOTAL STROKES ATTEMPTED TO SET HOLE DEPTH TO 0.00 FEET
8750	7915.98ft: Connection at 7920.5 SURVEY@7860' INC-3.12 AZ-225.58 TVD-7672'
8800	7915.98ft: ZWOB FROM Rig Display Drilling 7915.98ft: ZDIFF FROM Rig Display Drilling 7929.69ft: IN/OUT 9.5+/9.6 VIS 52/51 7956.00ft: HOLE DEPTH CHANGED TO 8046.0 FEET
8850	7963.48ft: PUMP SWEEP 8001.44ft: IN/OUT 9.6/9.6 VIS 52/53 8010.53ft: Connection at 8015.4 SURVEY @ 7955' INC- 3.16, AZ- 231.47, AZ- 7767.02
8900	8010.53ft: ZDIFF FROM Rig Display Drilling 8011.71ft: IN TALLY: HOLE DEPTH SET TO 8015.4 8046.00ft: SURVEY @ 7986' INC- 3.25, AZ- 231.12, TVD- 7797.97
8950	8046.00ft: IN/OUT 9.6/9.6 VIS 52/53 8046.00ft: RIGALARM: PVT Rig Alarm Device 110 Online 8046.00ft: PUMP PILL 8046.00ft: BOP TRIP DRILL 8046.00ft: FILL PIPE 8046.00ft: IN TALLY: HOLE DEPTH SET TO 7952.1
9000	8046.00ft: PUMP SWEEP 8046.00ft: PUMP PILL 8046.00ft: PULL RUBBER 8046.00ft: LAY DOWN BHA 8046.00ft: PULL WEAR BUSHING 8046.00ft: FILL CASING & CHECK FLOAT
9050	8046.00ft: FILL CASING 8046.00ft: BIT DEPTH CHANGED TO 2335.0 FEET
9100	
9150	
9200	