



BOREHOLE PROFILE

FILE NO: OH097524	COMPANY PICEANCE ENERGY	
WELL PICEANCE 28-09W		
API NO: 05077097770000	FIELD VEGA	
	COUNTY MESA	
	STATE COLORADO	
Ver. 4.01 SEC 28 T9S R93W PICEANCE 28-05 PATTERSON 306	LOCATION: SHL: 1597' FNL 1230' FWL BHL: 2125' FNL 874' FWL SEC 28 TWP 9S RGE 93W	OTHER SERVICES CASING INSPECTION HDIL ZDL CN GR
PERMANENT DATUM LOG MEASURED FROM DRILL. MEAS. FROM	GL ELEVATION 7556 FT KB 22 FT ABOVE P.D. KB	ELEVATIONS: KB 7578 FT DF GL 7556 FT

DATE	05-Aug-2015	
RUN	TRIP	1
SERVICE ORDER	US097524J	
DEPTH DRILLER	7844 FT	
DEPTH LOGGER	7844 FT	
BOTTOM LOGGED INTERVAL	7841 FT	
TOP LOGGED INTERVAL	0 FT	
CASING DRILLER	8.625 IN @ 1570 FT	
CASING LOGGER	1568 FT	
BIT SIZE	7.875 IN	
TYPE OF FLUID IN HOLE	LSND	
DENSITY	VISCOSITY	65 CP
PH	FLUID LOSS	7.6 C3
SOURCE OF SAMPLE	MUD TANK	
RM AT MEAS. TEMP.	1.14 OHMM @ 67.3 DEGF	
RMF AT MEAS. TEMP.	0.85 OHMM @ 67.3 DEGF	
RMC AT MEAS. TEMP.	1.42 OHMM @ 67.3 DEGF	
SOURCE OF RMF	RMC	CALCULATED
RM AT BHT	0.85 OHMM @ 177 DEGF	
TIME SINCE CIRCULATION	4 HOURS	
MAX. RECORDED TEMP.	177 DEGF	
EQUIP. NO.	LOCATION	GRAND JCT
RECORDED BY	W. QUIGLEY	
WITNESSED BY	MR. ROGER FOSTER	

IN MAKING INTERPRETATIONS OF LOGS OUR EMPLOYEES WILL GIVE THE CUSTOMER THE BENEFIT OF THEIR BEST JUDGEMENT. BUT SINCE ALL INTERPRETATIONS ARE OPINIONS BASED ON INFERENCES FROM ELECTRICAL OR OTHER MEASUREMENTS, WE CANNOT, AND WE DO NOT GUARANTEE THE ACCURACY OR CORRECTNESS OF ANY INTERPRETATION. WE SHALL NOT BE LIABLE OR RESPONSIBLE FOR ANY LOSS, COST, DAMAGES, OR EXPENSES WHATSOEVER INCURRED OR SUSTAINED BY THE CUSTOMER RESULTING FROM ANY INTERPRETATION MADE BY ANY OF OUR EMPLOYEES.

BOREHOLE RECORD		
BIT SIZE	FROM	TO
7.875 IN	1570 FT	7844 FT

CASING RECORD				
SIZE	WEIGHT	GRADE	FROM	TO
8.625 IN	24 LB/F		0 FT	1570 FT

REMARKS

RUN 1 TRIP 1: HDIL ZDL CN GR RAN IN COMBINATION

BVOL CVOL CALCULATED IN CUBIC FT
CVOL CALCULATED USING PROPOSED 4.5" CASING
CALIPER VERIFIED INSIDE CASING

THANK YOU FOR CHOOSING BAKER HUGHES WIRELINE SERVICES
CREW: OLSON/HOLLAR/QUIGLEY
RIG: PATTERSON 306

BVOL AND CVOL MAY BE LESS THAN ACTUAL DUE TO CALIPER MAXING OUT IN WASHOUTS

EQUIPMENT DATA

RUN	TRIP	TOOL	SERIES NO.	SERIAL NO.	POSITION
1	1	SWVL	3950XA	10119949	FREE
1	1	TTMA	3980XA	10121559	FREE
1	1	FOC TEL	3518FB	10137522	FREE
1	1	GR	3518EB	10139870	DECENTRALIZED
1	1	CN	2436XA	10522099	DECENTRALIZED
1	1	ZDL	2223XA	10123024	CALIPER DEVICE
1	1	HDIL	1530XA	10415933	FREE

BOREHOLE PROFILE

ECLIPS 6.2i ECLIPS General Release Rel 6.2i Wed Jun 12 12:21:40 CDT 2013

Updates: 1 Patches: 7

Plotted: Wed Aug 5 21:03:37 2015

PARAMETER AND FILTER SUMMARY REPORT

FILE: /dat1a/OH097524/n970m03.prm
 LOGGING MODE: DEPTH DIRECTION: UP
 TOP DEPTH: 1453.494 ft BOTTOM DEPTH: 7852.372 ft

SYMMETRIC FILTER

MEASUREMENT TYPE	PARAMETER	VALUE	UNITS	INTERVAL (ft)	
GR MED RES	FILTER ()	medium (1)		TOP	BOTTOM
CALIPER	FILTER ()	medium (1)		"	"
TENSION	FILTER ()	medium (1)		"	"

BOREHOLE & CEMENT

MEASUREMENT TYPE	PARAMETER	VALUE	UNITS	INTERVAL (ft)	
CASING - BOREHOLE & CEMENT VOLUME	CASING O.D.	4.500	in	TOP	BOTTOM
BIT SIZE	BIT SIZE	7.875	in	"	"

ACCELERATION PROCESSING

MEASUREMENT TYPE	PARAMETER	VALUE	UNITS	INTERVAL (ft)	
ACCEL CORR SWITCH	ACCEL DEPTH CORR	CORRECTION ON		TOP	BOTTOM

CURVE DESCRIPTION REPORT

CURVE NAME	CREATION DATE	CURVE DESCRIPTION
F1:BIT	Aug 5 18:59:19 2015	BIT SIZE
F1:BVOL	Aug 5 18:59:19 2015	BOREHOLE VOLUME
F1:CAL	Aug 5 18:59:19 2015	CALIPER
F1:CVOL	Aug 5 18:59:19 2015	CEMENT VOLUME
F1:GR	Aug 5 18:59:19 2015	GAMMA RAY
F1:TEN	Aug 5 18:59:19 2015	DIFFERENTIAL TENSION

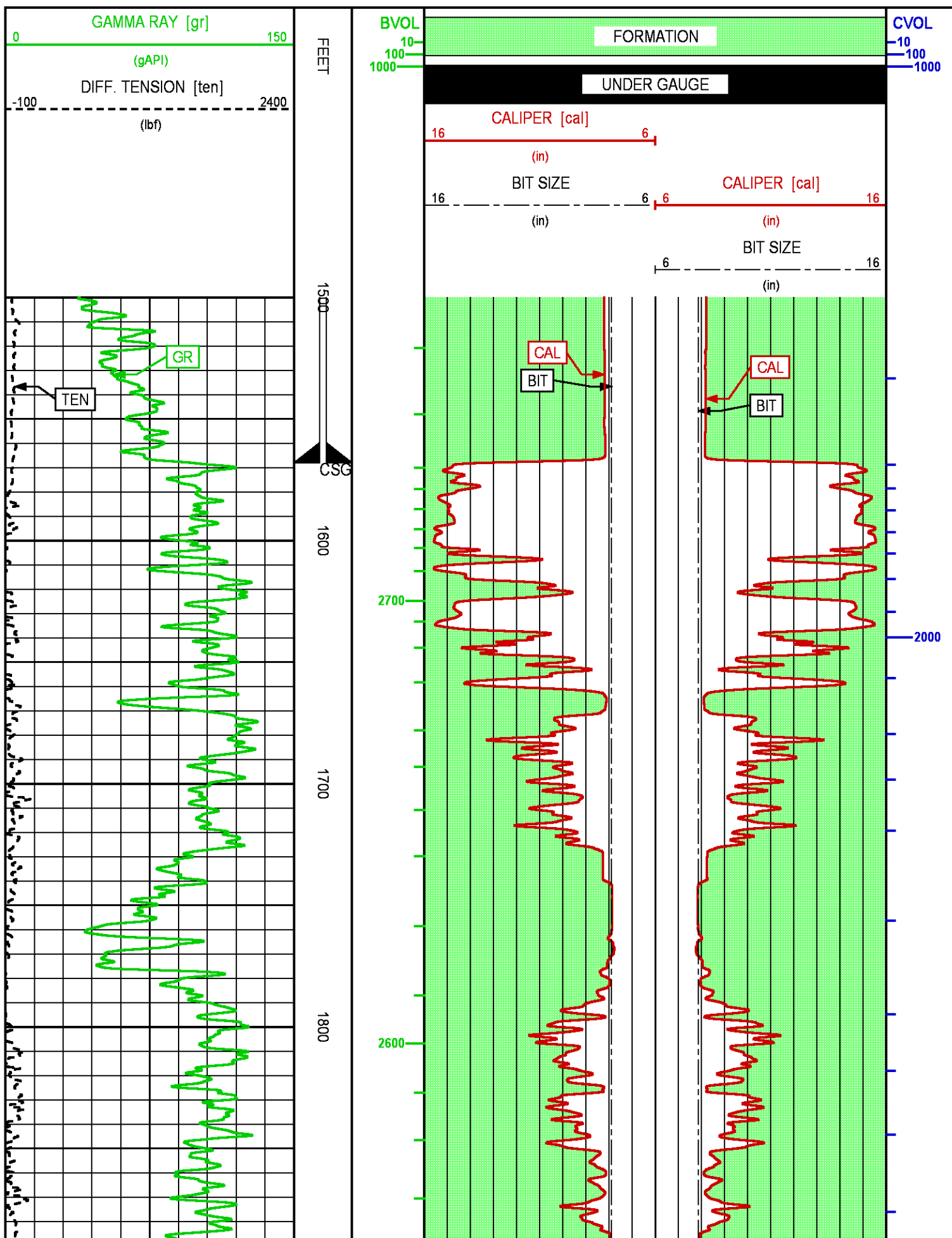
CURVE MEASURE POINT OFFSET

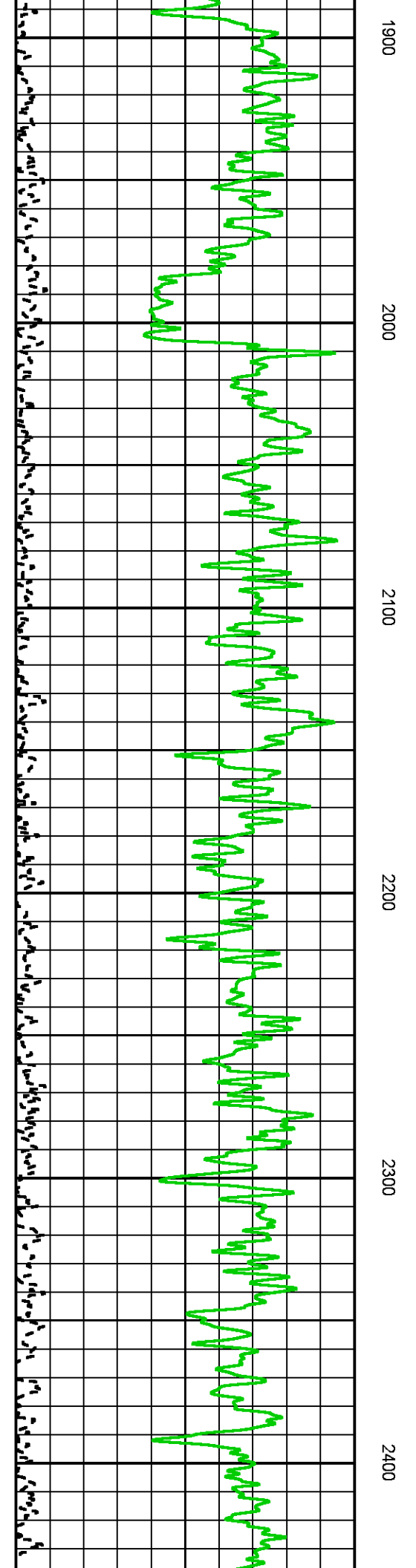
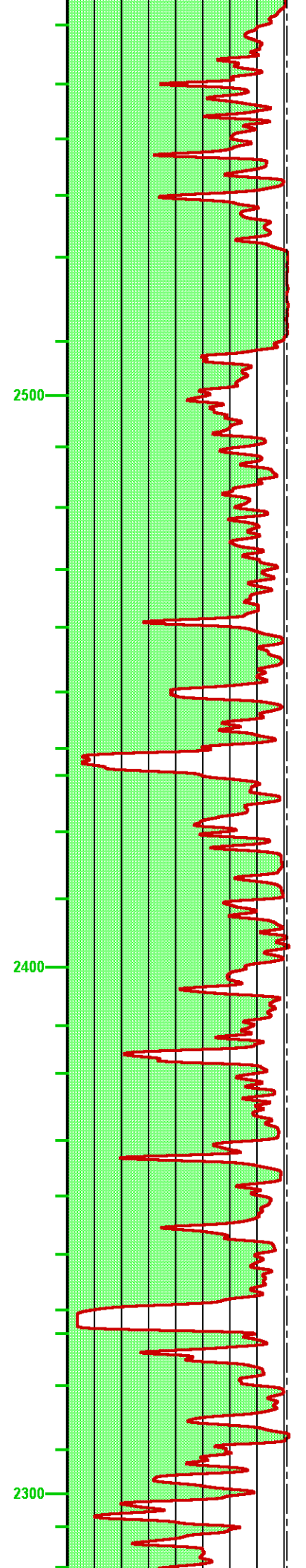
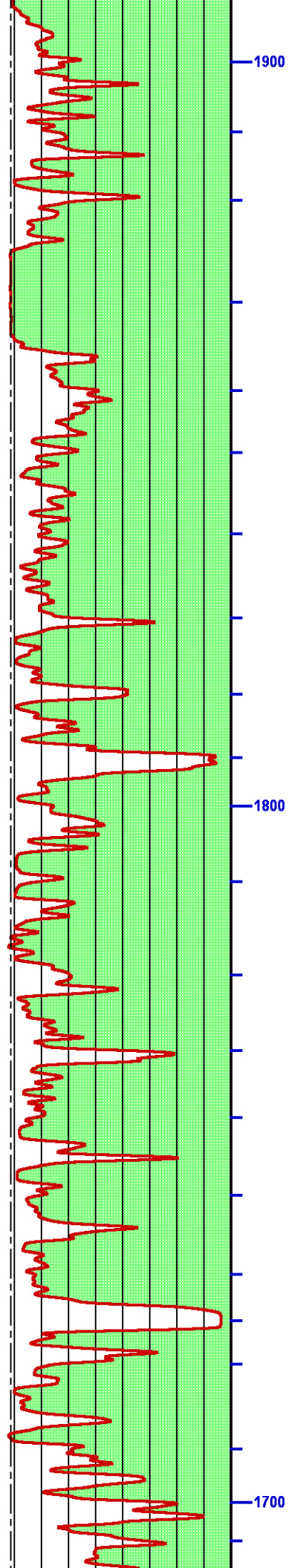
CURVE	OFFSET (ft)	CURVE	OFFSET (ft)	CURVE	OFFSET (ft)	CURVE	OFFSET (ft)
BIT	0.00	CAL	15.12	GR	32.00	TEN	0.00

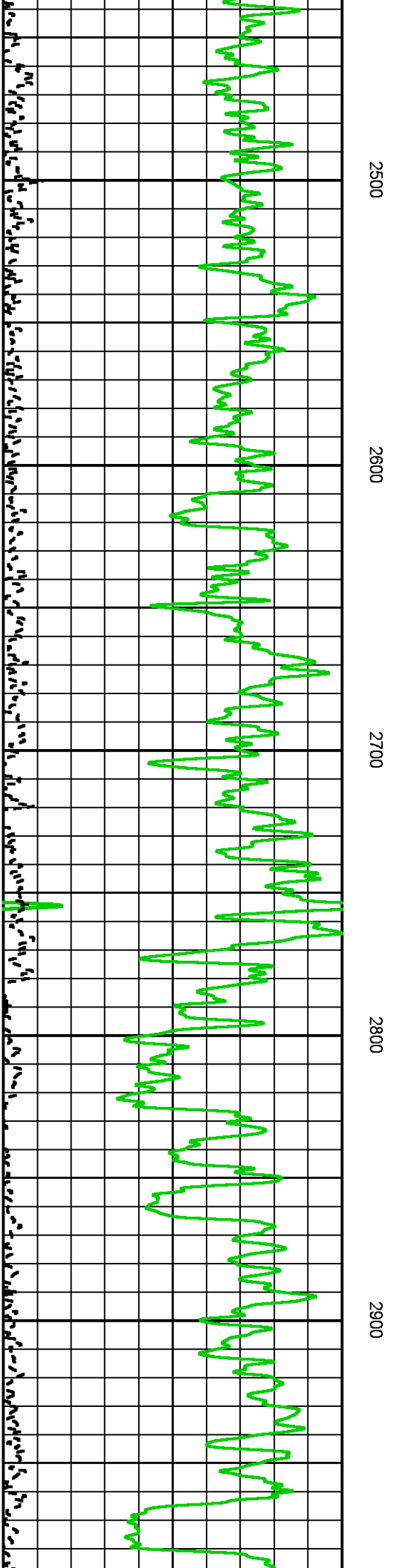
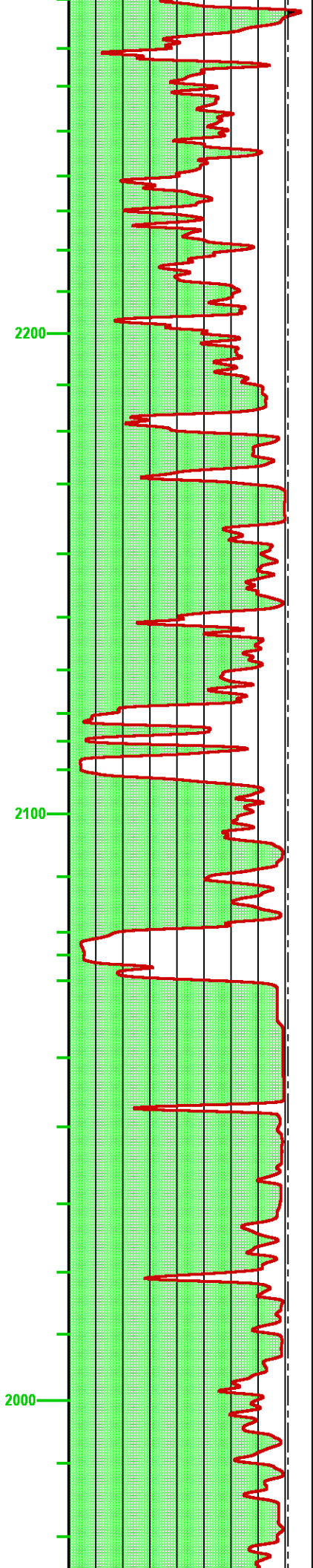
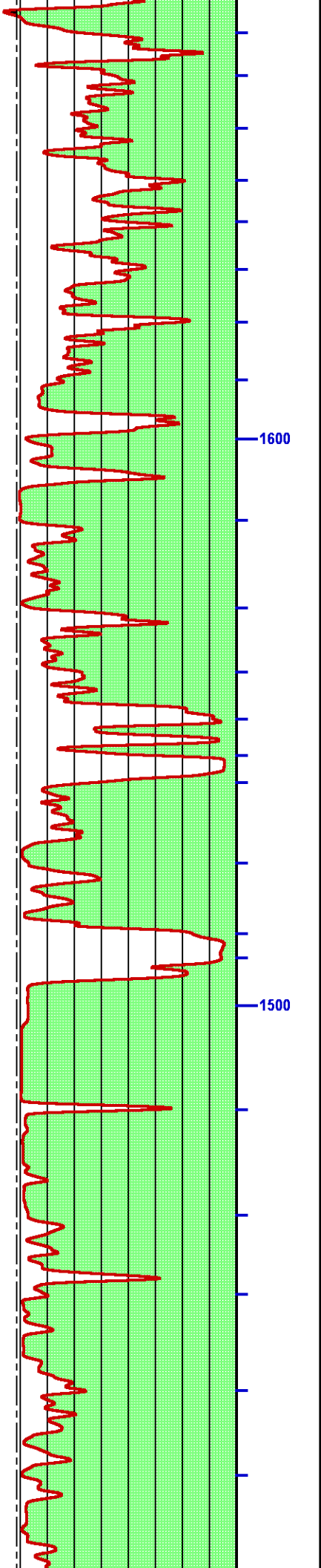
Presentation : cas6685:/dat1a/OH097524/BHP.fvpdf [2"/100' Scale]
 Plot Interval : 1500 - 7852.5 Feet

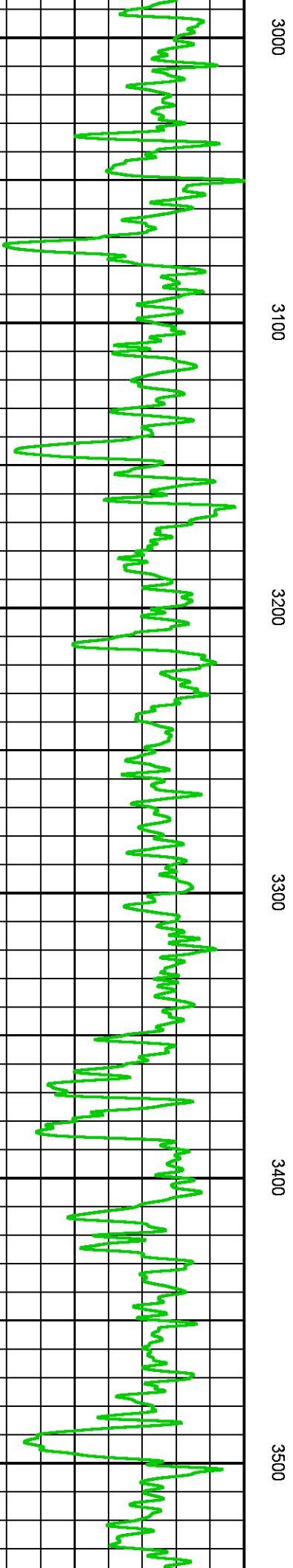
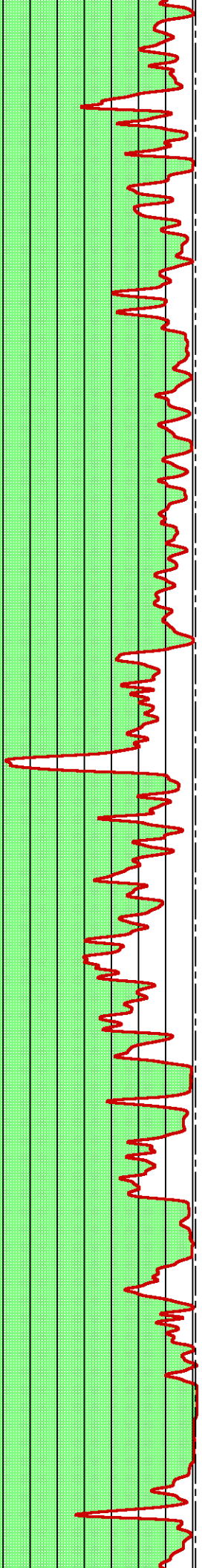
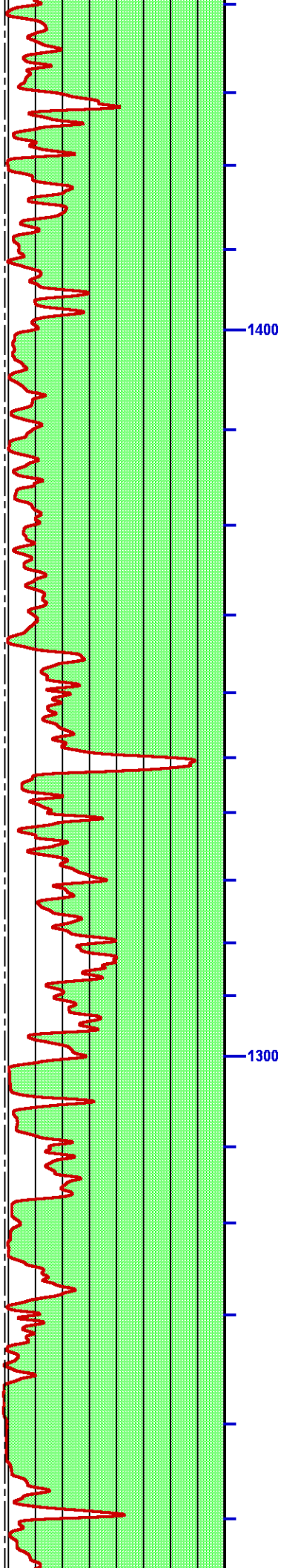
Data File 1 : F1 : cas6685:/dat1a/OH097524/n970m03_MAIN.xtf
 Created On : Aug 5 18:59:19 2015

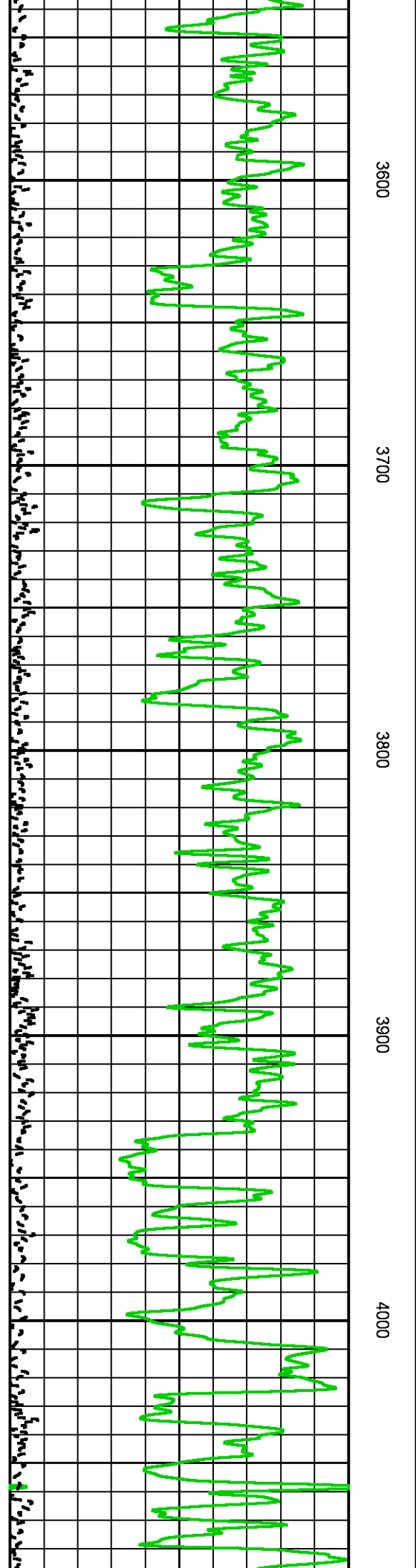
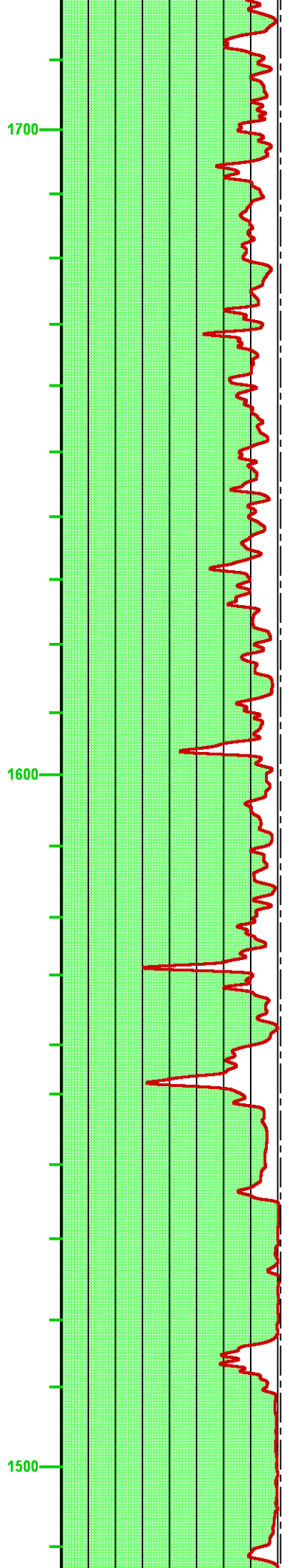
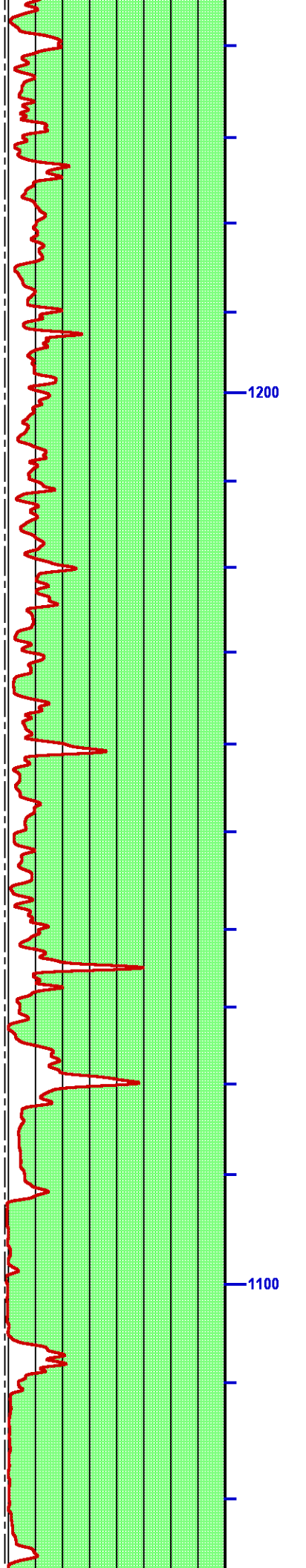
Company : LARAMIE ENERGY
Well : PICEANCE 28-09W
Field : VEGA
File Interval : 0 - 7853.75 Feet
OCT : n970m

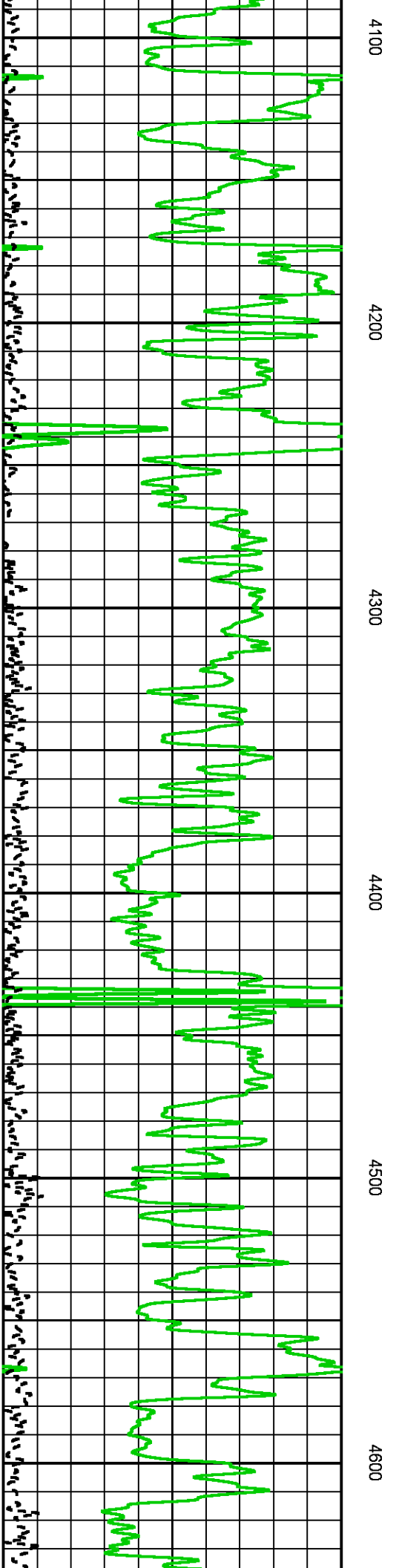
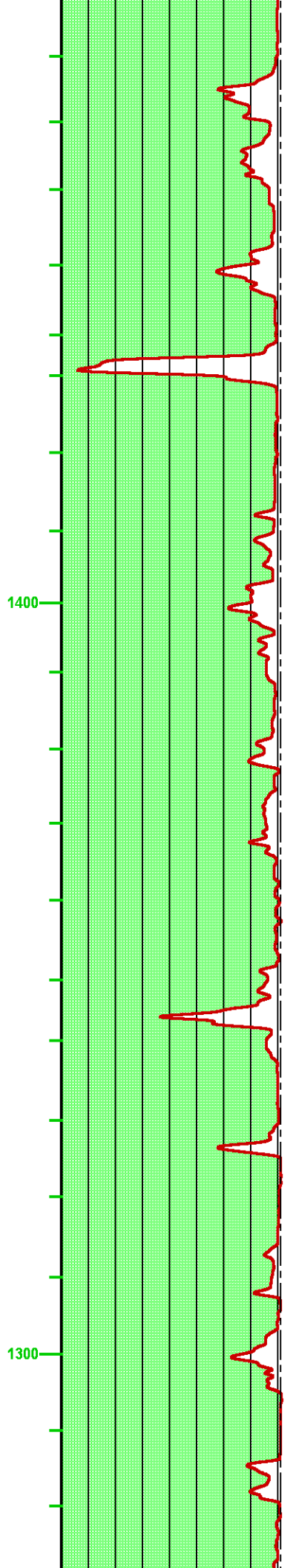
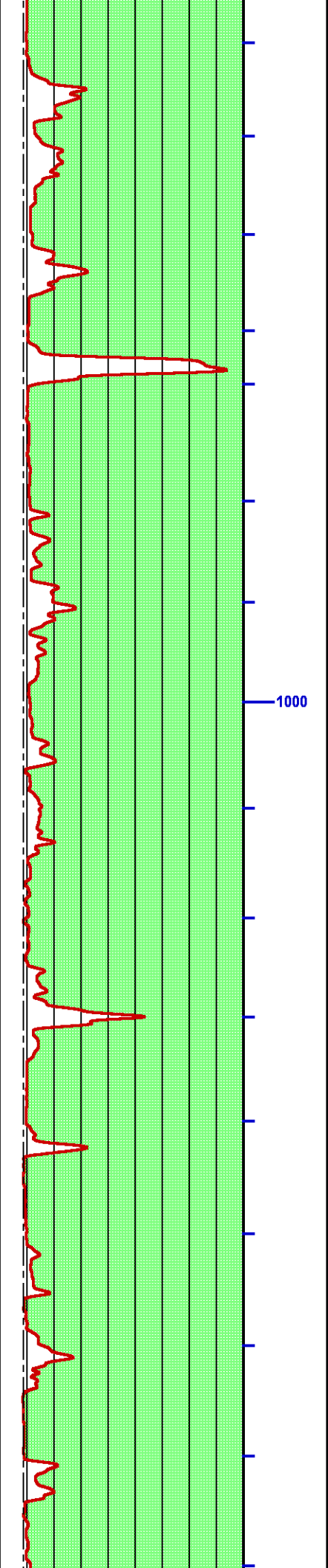


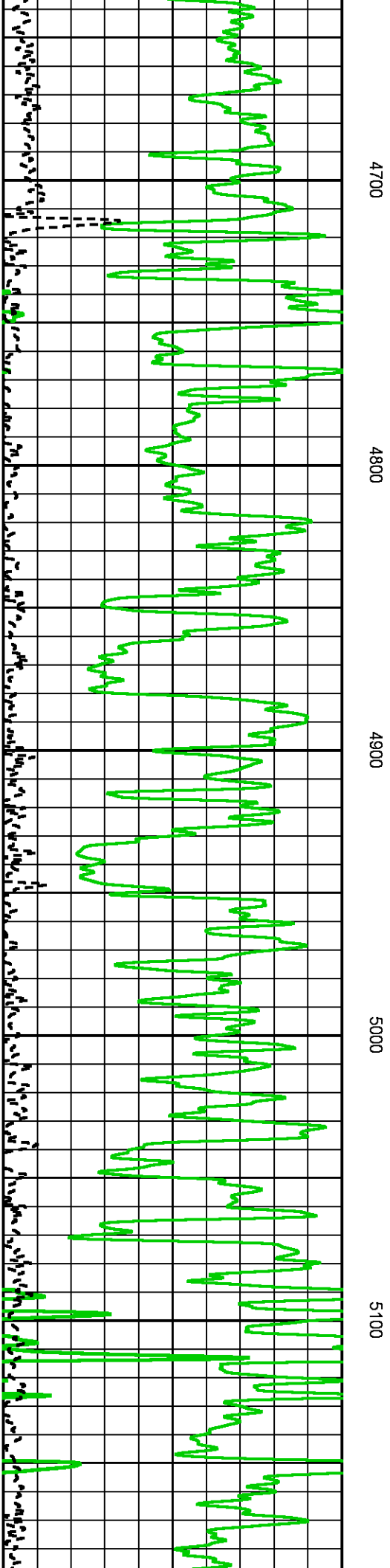
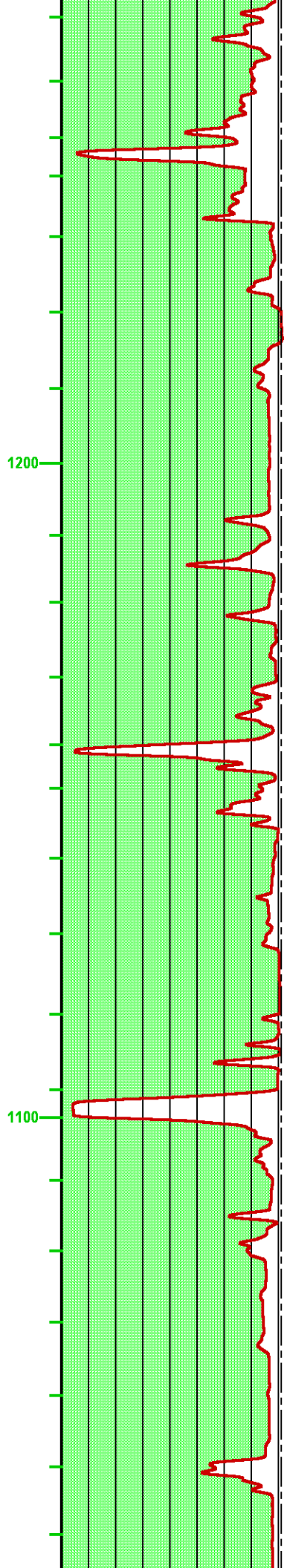
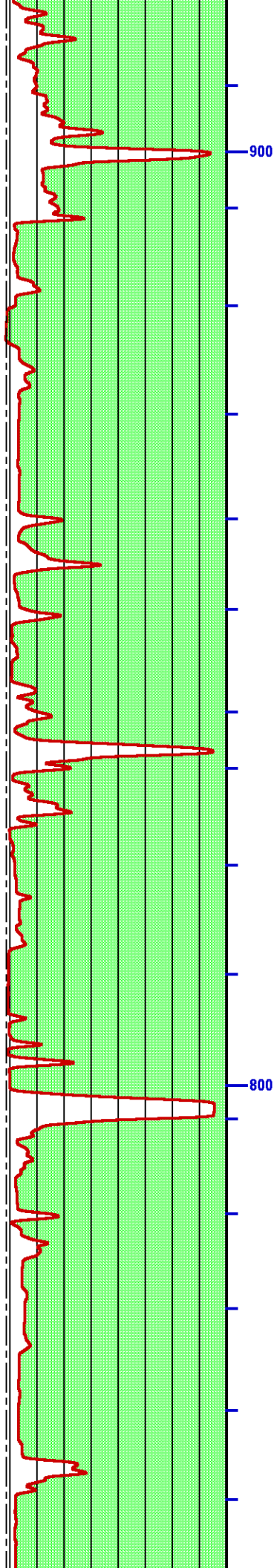


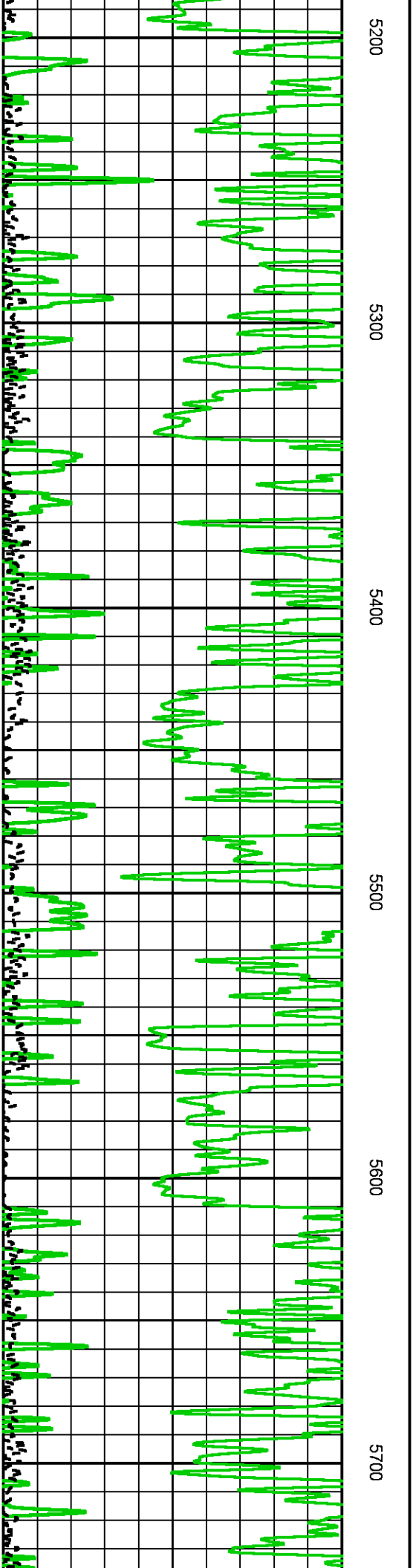
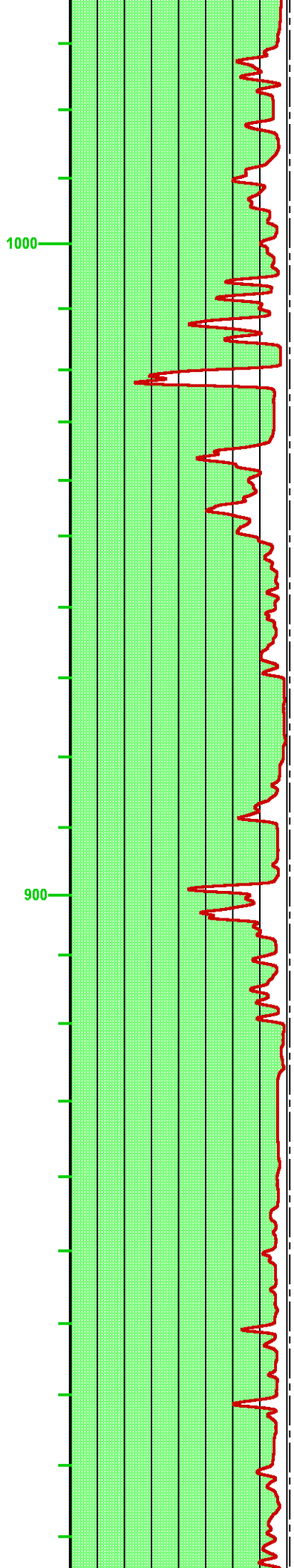
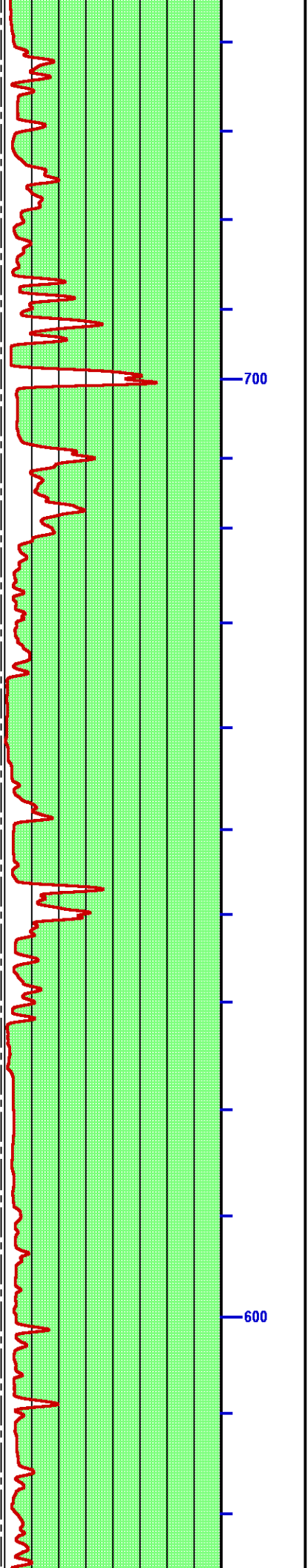


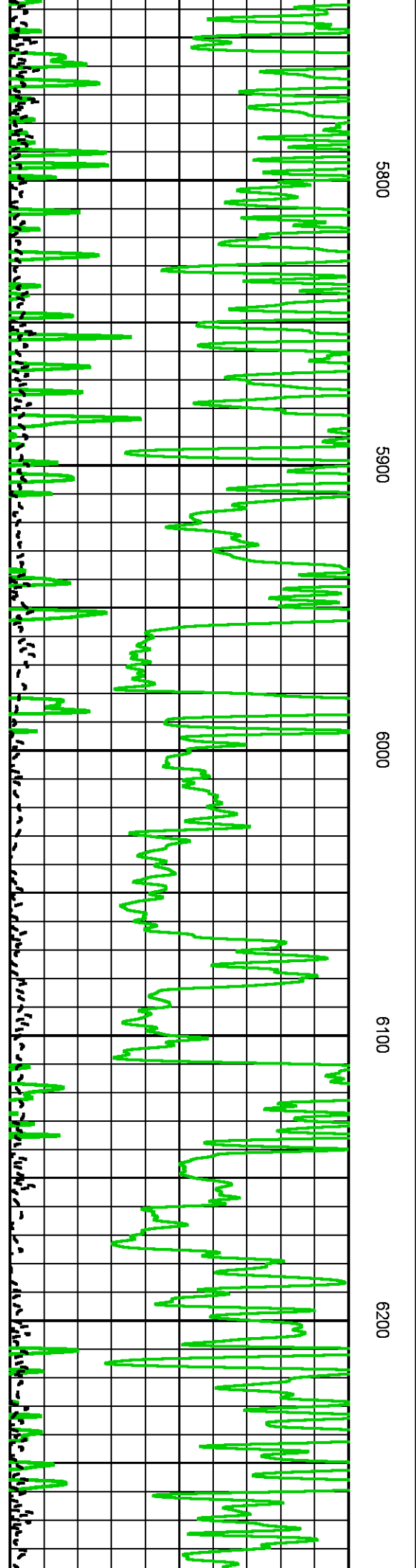
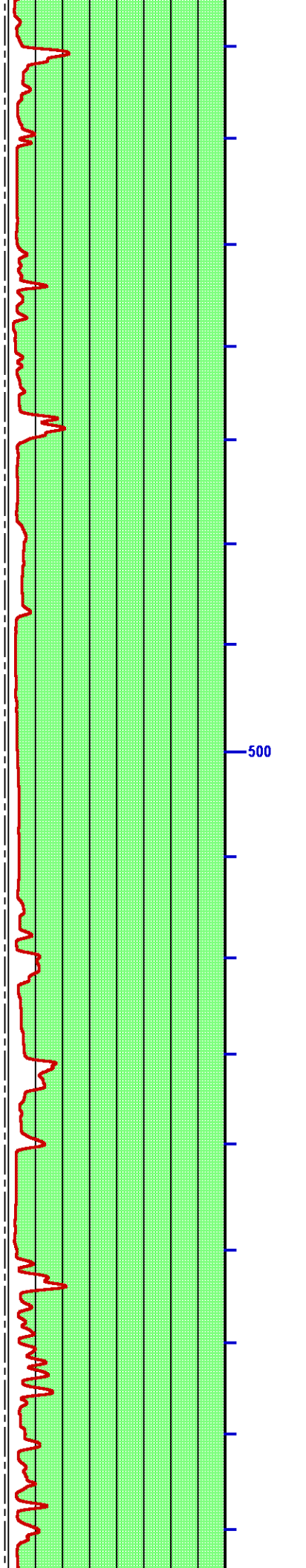


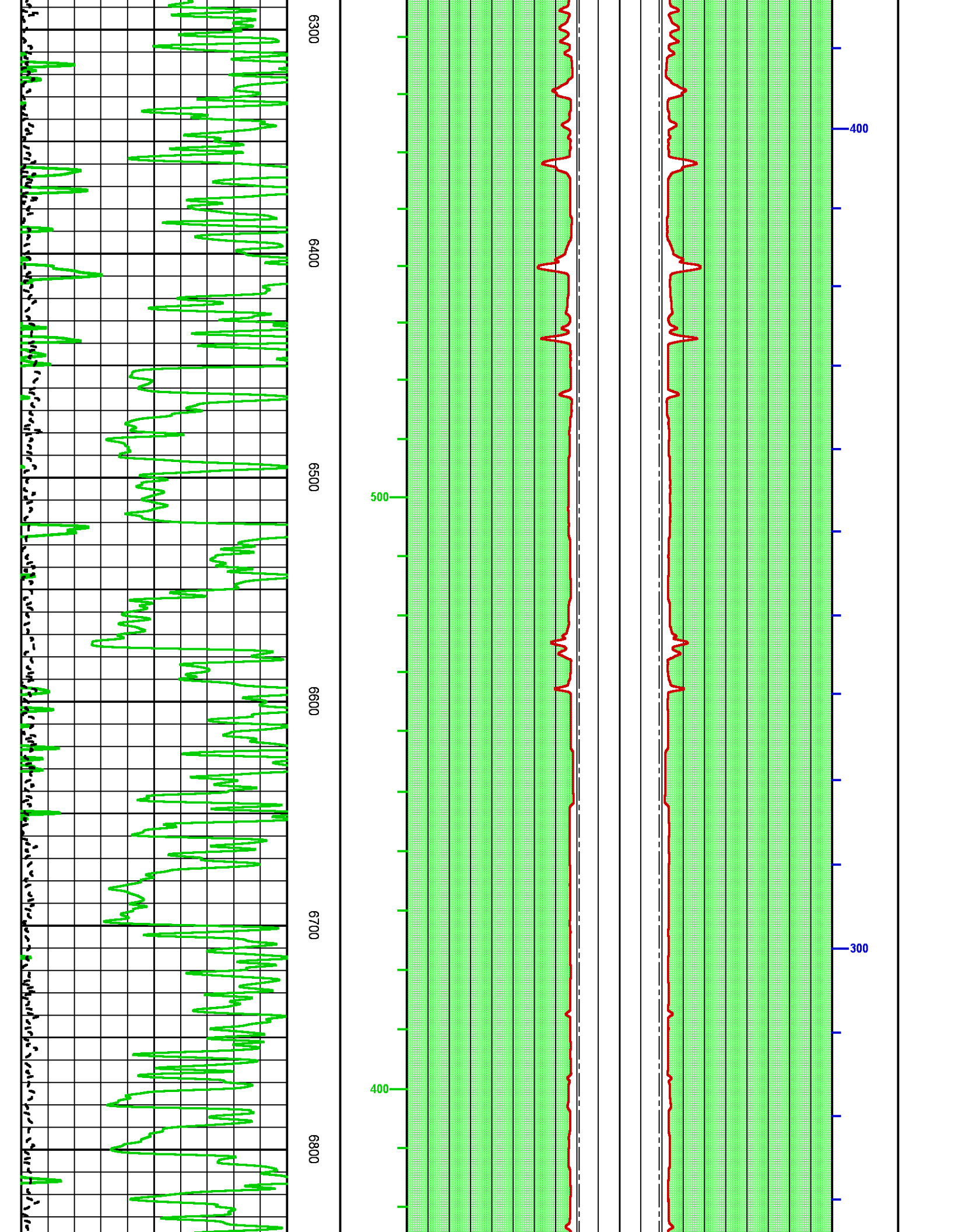


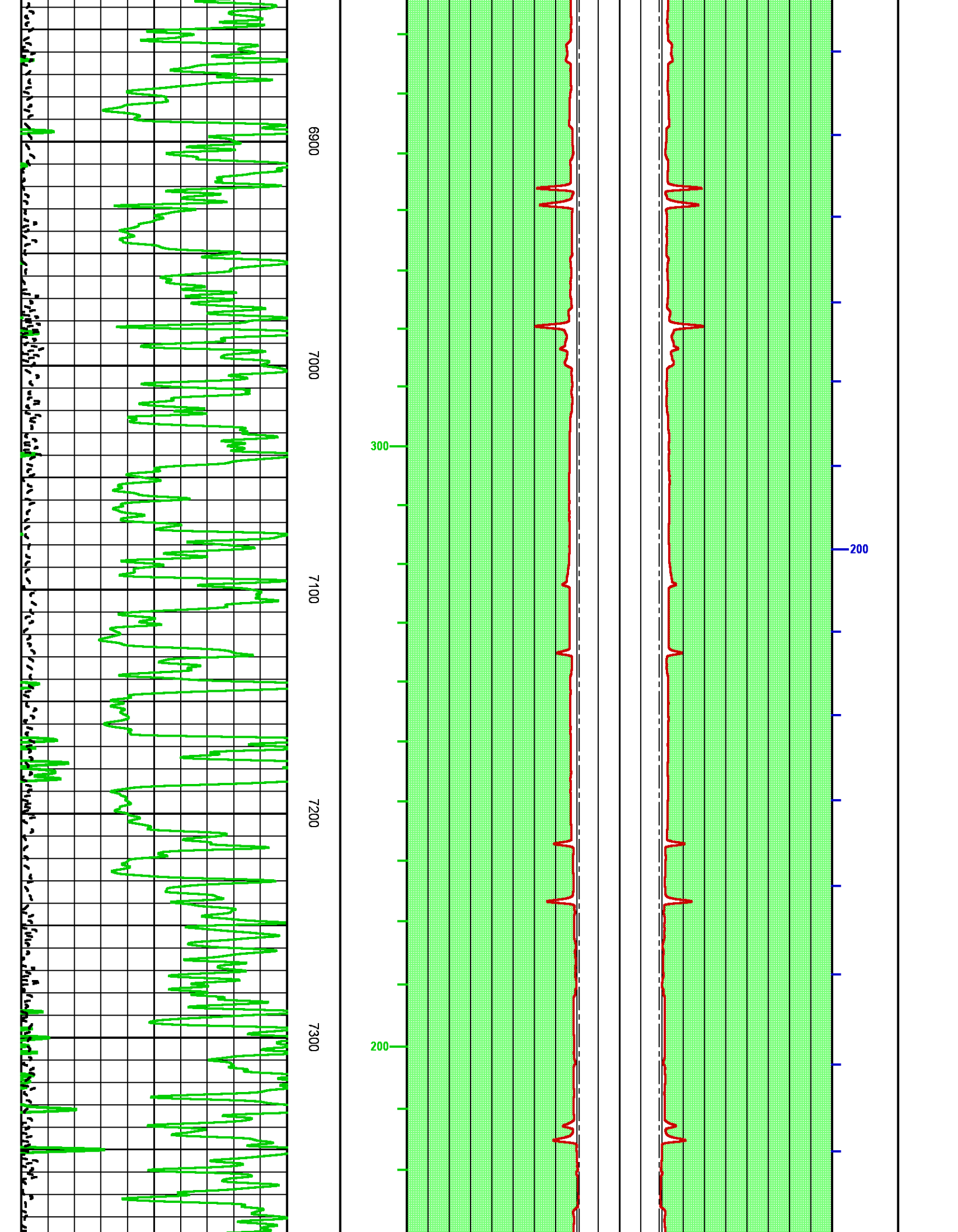


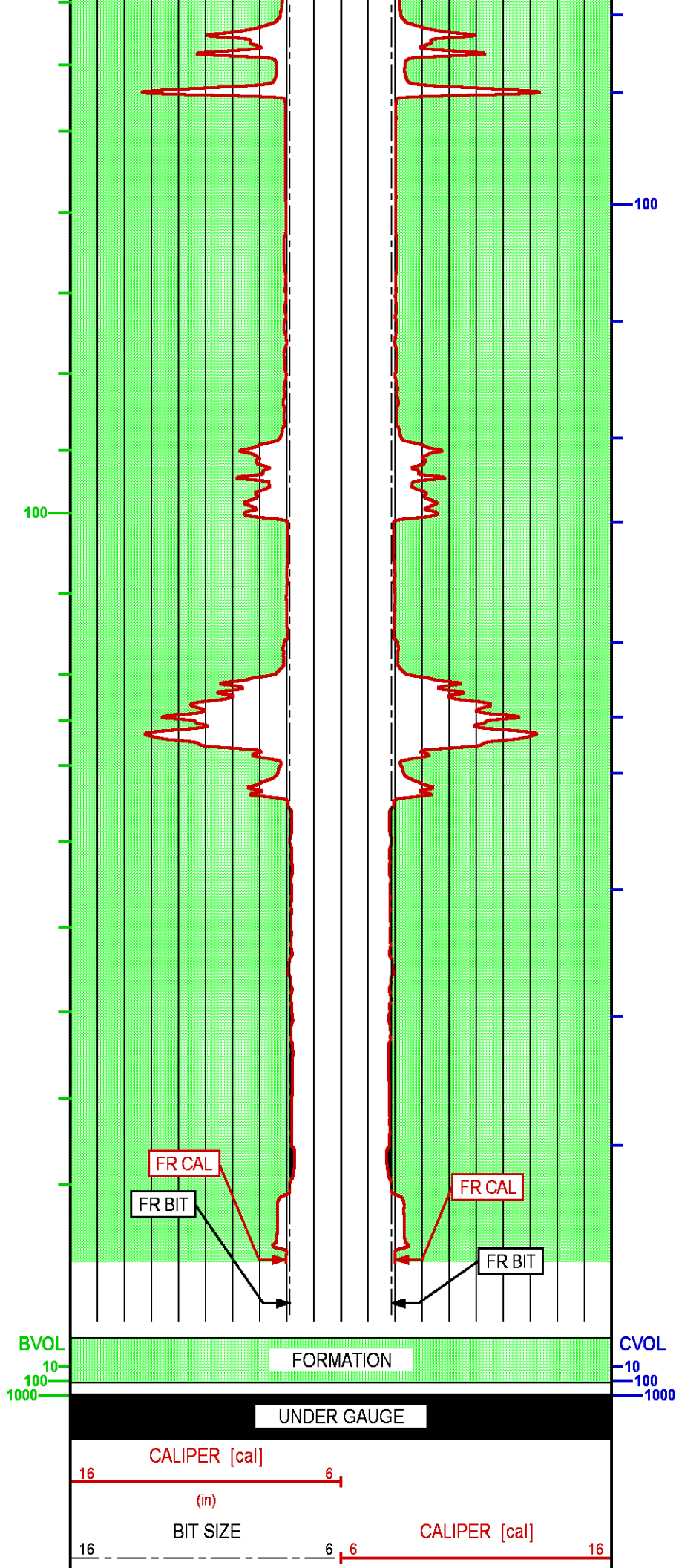
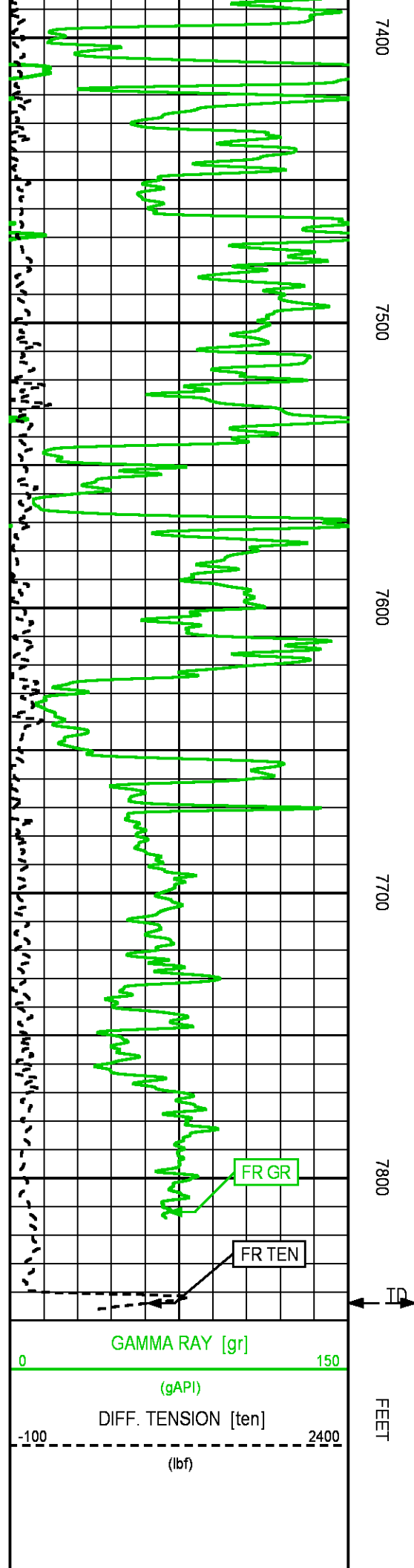













			(in)	BIT SIZE 6 16 (in)	
--	--	--	------	--------------------------	--

	COMPANY <u>PICEANCE ENERGY</u>		FILE NO:
	WELL <u>PICEANCE 28-09W</u>		<u>OH097524</u>
	FIELD <u>VEGA</u>		API NO:
	COUNTY <u>MESA</u>	STATE <u>COLORADO</u>	<u>05077097770000</u>
LOCATION: SHL: 1597' FNL 1230' FWL BHL: 2125' FNL 874' FWL		ELEVATIONS: KB 7578 FT DF GL 7556 FT	SEC 28 T9S R93W PICEANCE 28-05 PATTERSON 306
SEC <u>28</u> TWP <u>9S</u> RGE <u>93W</u>		DATE <u>05-Aug-2015</u>	