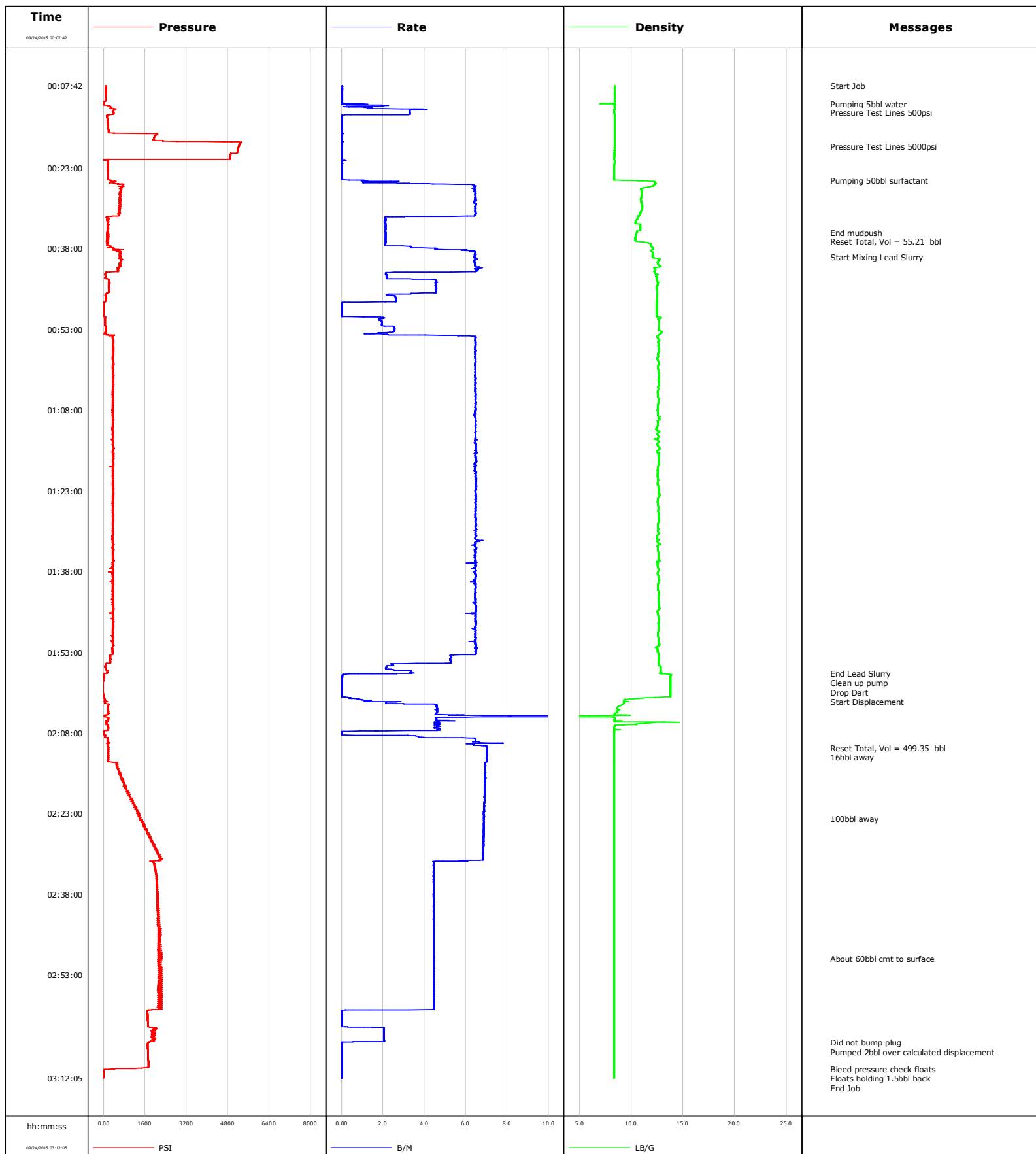


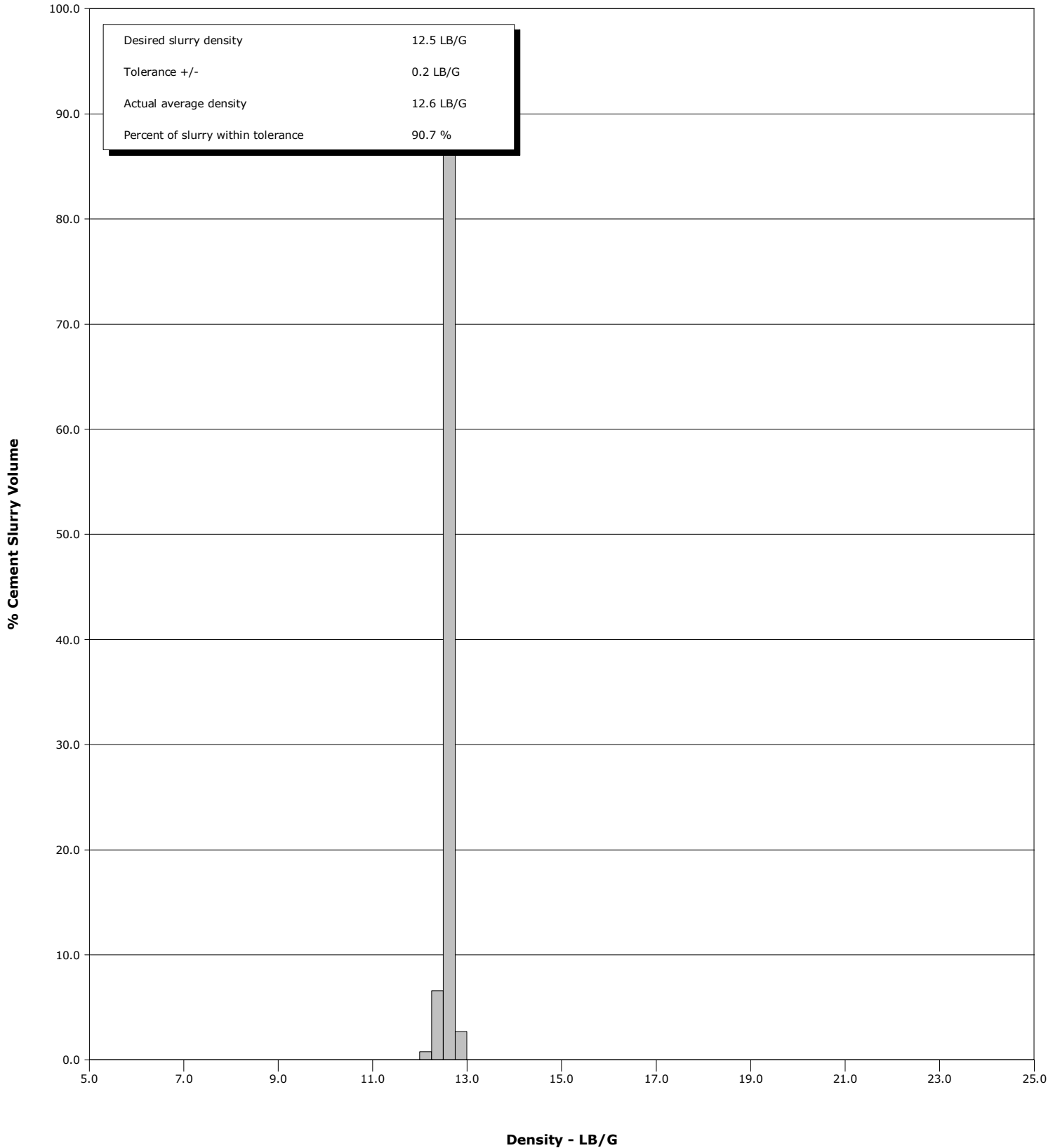
Well	Wagg	Client	Extraction
Field	DJ	SIR No.	DAXH-00411
Engineer	Chris Valerio/Luis Evans	Job Type	Production
Country	United States	Job Date	09-23-2015



Well Wagg
Field DJ
Engineer Chris Valerio/Luis Evans
Country United States

Client Extraction
SIR No. DAXH-00411
Job Type Production
Job Date 09-23-2015

Cement Slurry - 09/24/2015 00:39:35 to 09/24/2015 01:56:57



				Customer Extraction			Job Number DAXH-00411						
Well Wagg 25			Location (legal)			Schlumberger Location			Job Start Sep/23/2015				
Field DJ		Formation Name/Type Shale			Deviation 90 deg		Bit Size 7.9 in		Well MD 12007.0 ft		Well TVD 7320.0 ft		
County Weld		State/Province Colorado			BHP psi		BHST 211 degF		BHCT 211 degF		Pore Press. Gradient lb/gal		
Well Master 0631593030		API/UWI 05123403470000											
Rig Name Savanna #802		Drilled For Oil		Service Via Land		Casing/Liner							
						Depth, ft		Size, in		Weight, lb/ft		Grade	
						894.0		9.6		36.0		H40	
Offshore Zone		Well Class New		Well Type Development		12007.0		5.5		20.0		P110	
Drilling Fluid Type Oil Mud		Max. Density 9.60 lb/gal		Plastic Viscosity cP		Tubing/Drill Pipe							
						T/D		Depth, ft		Size, in		Weight, lb/ft	
Service Line Cementing		Job Type Production											
Max. Allowed Tub. Press 4500 psi		Max. Allowed Ann. Press psi		WH Connection Double Cement head		Perforations/Open Hole							
						Top, ft		Bottom, ft		shot/ft		No. of Shots	
						ft		ft				Total Interval ft	
						ft		ft				Diameter in	
						ft		ft					
						Treat Down Casing		Displacement 266.2 bbl		Packer Type		Packer Depth ft	
						Tubing Vol. bbl		Casing Vol. 266.5 bbl		Annular Vol. 386.0 bbl		Openhole Vol. bbl	
Casing/Tubing Secured <input checked="" type="checkbox"/>		1 Hole Vol. Circulated prior to Cement <input checked="" type="checkbox"/>				Casing Tools				Squeeze Job			
Lift Pressure psi						Shoe Type Float				Squeeze Type			
Pipe Rotated <input type="checkbox"/>		Pipe Reciprocated <input type="checkbox"/>				Shoe Depth 12007.0 ft				Tool Type			
No. Centralizers		Top Plugs 1		Bottom Plugs		Stage Tool Type				Tool Depth ft			
Cement Head Type Double						Stage Tool Depth ft				Tail Pipe Size in			
Job Scheduled For Sep/23/2015 18:30		Arrived on Location Sep/23/2015 18:30		Leave Location Sep/24/2015 04:30		Collar Type Other				Tail Pipe Depth ft			
						Collar Depth 11996.7 ft				Sqz. Total Vol. bbl			
Date	Time 24-hr clock	Treating Pressure PSI	Flow Rate B/M	Density LB/G	Volume BBL	Message							
09/24/2015	00:07:42	78	0.0	8.40	0.0	Started Acquisition							
09/24/2015	00:07:44	79	0.0	8.40	0.0	Start Job							
09/24/2015	00:11:05	5	1.0	8.34	0.0	Pumping 5bbl water							
09/24/2015	00:12:40	404	3.3	8.36	3.4	Pressure Test Lines 500psi							
09/24/2015	00:12:42	375	3.3	8.36	3.5								
09/24/2015	00:17:42	1932	0.0	8.37	4.9								
09/24/2015	00:19:06	5220	0.0	8.37	5.0	Pressure Test Lines 5000psi							
09/24/2015	00:22:42	156	0.0	8.36	0.0								
09/24/2015	00:25:23	292	1.2	10.99	0.2	Pumping 50bbl surfactant							
09/24/2015	00:27:42	605	6.5	11.00	12.4								
09/24/2015	00:32:42	140	2.1	10.49	41.8								
09/24/2015	00:35:08	193	2.1	10.48	46.9	End mudpush							
09/24/2015	00:36:37	184	2.1	10.59	50.1	Reset Total, Vol = 55.21 bbl							
09/24/2015	00:37:42	274	3.3	12.00	2.2								
09/24/2015	00:39:35	638	6.5	12.10	13.1	Start Mixing Lead Slurry							
09/24/2015	00:42:42	60	2.1	12.52	31.8								
09/24/2015	00:47:42	76	2.6	12.49	49.6								
09/24/2015	00:52:42	77	2.5	12.69	54.3								
09/24/2015	00:57:42	354	6.5	12.56	80.8								
09/24/2015	01:02:42	366	6.5	12.67	113.1								
09/24/2015	01:07:42	357	6.5	12.59	145.5								

Well			Field	Job Start	Customer	Job Number
Wagg 25			DJ	Sep/23/2015	Extraction	DAXH-00411
Date	Time 24-hr clock	Treating Pressure PSI	Flow Rate B/M	Density LB/G	Volume BBL	Message
09/24/2015	01:17:42	372	6.5	12.66	210.3	
09/24/2015	01:22:42	371	6.5	12.67	242.7	
09/24/2015	01:27:42	348	6.5	12.65	275.1	
09/24/2015	01:32:42	354	6.5	12.67	307.6	
09/24/2015	01:37:42	351	6.5	12.64	339.9	
09/24/2015	01:42:42	350	6.5	12.61	372.3	
09/24/2015	01:47:42	357	6.5	12.61	404.6	
09/24/2015	01:52:42	339	6.5	12.54	437.0	
09/24/2015	01:56:57	11	2.7	12.89	455.3	End Lead Slurry
09/24/2015	01:57:12	4	0.1	13.85	0.0	Clean up pump
09/24/2015	01:57:13	3	0.0	13.85	0.0	Drop Dart
09/24/2015	01:57:14	3	0.0	13.84	0.0	Start Displacement
09/24/2015	01:57:42	5	0.0	13.78	0.0	
09/24/2015	02:02:42	191	4.6	9.12	2.4	
09/24/2015	02:07:42	10	0.0	8.35	0.0	
09/24/2015	02:10:48	183	7.0	8.35	14.9	Reset Total, Vol = 499.35 bbl
09/24/2015	02:11:03	183	7.0	8.35	16.6	16bbl away
09/24/2015	02:12:42	180	7.0	8.35	28.2	
09/24/2015	02:17:42	837	6.9	8.35	63.0	
09/24/2015	02:22:42	1339	6.9	8.35	97.5	
09/24/2015	02:23:57	1429	6.9	8.35	106.1	100bbl away
09/24/2015	02:27:42	1822	6.9	8.35	131.9	
09/24/2015	02:32:42	1967	4.5	8.35	163.8	
09/24/2015	02:37:42	2096	4.4	8.35	186.0	
09/24/2015	02:42:42	2088	4.4	8.35	208.3	
09/24/2015	02:47:42	2206	4.5	8.35	230.5	
09/24/2015	02:49:55	2190	4.5	8.35	240.4	About 60bbl cmt to surface
09/24/2015	02:52:42	2249	4.5	8.35	252.8	
09/24/2015	02:57:42	2217	4.5	8.35	275.1	
09/24/2015	03:02:42	1960	2.0	8.36	282.8	
09/24/2015	03:05:30	1711	0.0	8.35	288.2	Did not bump plug
09/24/2015	03:06:21	1703	0.0	8.35	288.2	Pumped 2bbl over calculated displacement
09/24/2015	03:07:42	1717	0.0	8.35	288.2	
09/24/2015	03:10:29	23	0.0	8.35	288.2	Bleed pressure check floats
09/24/2015	03:11:46	-1	0.0	8.35	288.2	Floats holding 1.5bbl back

Post Job Summary

Average Pump Rates, bbl/min					Volume of Fluid Injected, bbl					
Slurry 4.7	N2	Mud	Maximum Rate 7.0		Total Slurry 452.0	Mud 0.0	Spacer 50.0	N2		
Treating Pressure Summary, psi					Breakdown Fluid					
Maximum 2259	Final 0	Average 889	Bump Plug to 2300	Breakdown	Type	Volume bbl		Density lb/gal		
Avg. N2 Percent %		Designed Slurry Volume 452.0 bbl		Displacement 268.0 bbl	Mix Water Temp 72 degF	Cement Circulated to Surface? <input checked="" type="checkbox"/>		Volume 60.0 bbl		
						Washed Thru Perfs <input type="checkbox"/>		To ft		
Customer or Authorized Representative Shawn McIntyr			Schlumberger Supervisor Chris Valerio/Luis Evans			Circulation Lost <input type="checkbox"/>		Job Completed <input checked="" type="checkbox"/>		
						-		-		