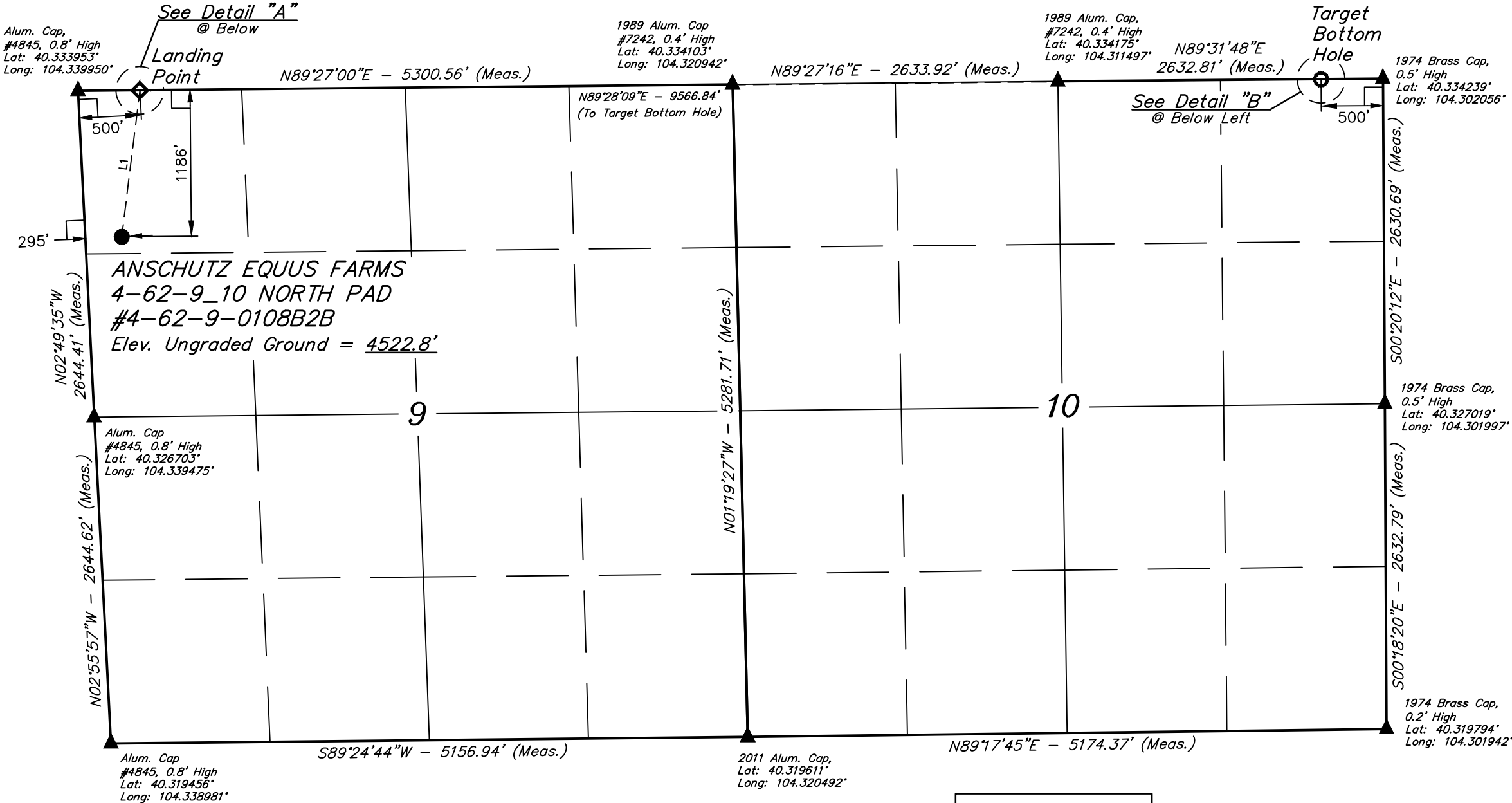
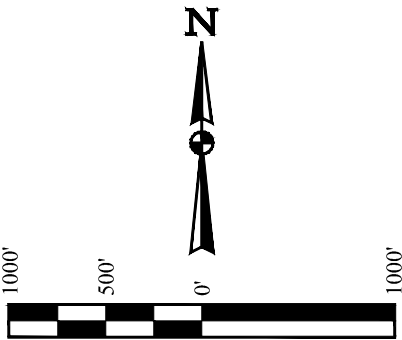


T4N, R62W, 6th P.M.

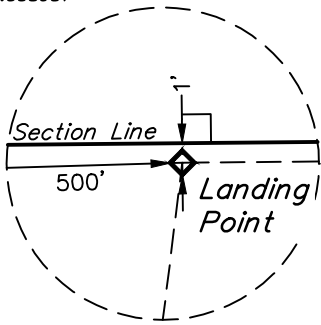
BILL BARRETT CORPORATION
ANSCHUTZ EQUUS FARMS 4-62-9 10 NORTH PAD
#4-62-9-0108B2B
NW 1/4 NW 1/4, SECTION 9, T4N, R62W, 6th P.M.
WELD COUNTY, COLORADO

BASIS OF BEARINGS
BASIS OF BEARINGS IS A G.P.S. OBSERVATION
BASIS OF ELEVATION

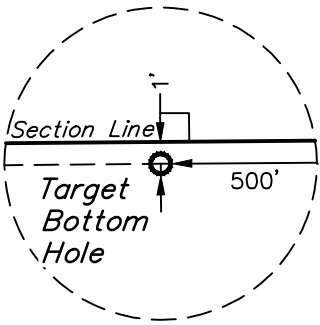
SPOT ELEVATION LOCATED AT THE NORTHEAST CORNER OF SECTION 24, T5N, R62W, 6th P.M. TAKEN FROM THE POINT OF ROCKS, QUADRANGLE, COLORADO, WELD COUNTY, 7.5 MINUTE QUAD (TOPOGRAPHIC MAP) PUBLISHED BY THE UNITED STATES DEPARTMENT OF THE INTERIOR, GEOLOGICAL SURVEY. SAID ELEVATION IS MARKED AS BEING 4530 FEET.



| LINE TABLE | | |
|------------|-------------|----------|
| LINE | DIRECTION | LENGTH |
| L1 | N07°03'46"E | 1195.29' |



Detail "A"
No Scale



Detail "B"
No Scale

LEGEND:

- 90° SYMBOL
- PROPOSED WELLHEAD.
- LANDING POINT.
- TARGET BOTTOM HOLE.
- SECTION CORNERS LOCATED.

PDOP = 1.2

| NAD 83 (TARGET BOTTOM HOLE) | NAD 83 (LANDING POINT) | NAD 83 (SURFACE LOCATION) |
|--|--|--|
| LATITUDE = 40°20'03.21" (40.334225) | LATITUDE = 40°20'02.27" (40.333964) | LATITUDE = 40°19'50.55" (40.330708) |
| LONGITUDE = 104°18'13.86" (104.303850) | LONGITUDE = 104°20'17.36" (104.338156) | LONGITUDE = 104°20'19.24" (104.338678) |
| NAD 27 (TARGET BOTTOM HOLE) | NAD 27 (LANDING POINT) | NAD 27 (SURFACE LOCATION) |
| LATITUDE = 40°20'03.28" (40.334244) | LATITUDE = 40°20'02.34" (40.333983) | LATITUDE = 40°19'50.62" (40.330728) |
| LONGITUDE = 104°18'12.03" (104.303342) | LONGITUDE = 104°20'15.53" (104.337647) | LONGITUDE = 104°20'17.41" (104.338169) |
| STATE PLANE NAD 83 (COLORADO NORTH) | STATE PLANE NAD 83 (COLORADO NORTH) | STATE PLANE NAD 83 (COLORADO NORTH) |
| N: 1366847.84 E: 3333453.55 | N: 1366625.67 E: 3323891.79 | N: 1365437.82 E: 3323761.44 |
| STATE PLANE NAD 27 (COLORADO NORTH) | STATE PLANE NAD 27 (COLORADO NORTH) | STATE PLANE NAD 27 (COLORADO NORTH) |
| N: 366850.05 E: 2333603.70 | N: 366627.85 E: 2324041.93 | N: 365440.03 E: 2323911.59 |

CERTIFICATE
THIS IS TO CERTIFY THAT THE ABOVE PLAT WAS PREPARED FROM FIELD NOTES OF ACTUAL SURVEYS MADE BY ME OR UNDER MY SUPERVISION AND THAT THE SAME ARE TRUE AND CORRECT TO THE BEST OF MY KNOWLEDGE AND BELIEF.

REGISTERED LAND SURVEYOR
REGISTRATION NO. 28285
STATE OF COLORADO



UELS, LLC
Corporate Office * 85 South 200 East
Vernal, UT 84078 * (435) 789-1017

| | |
|-----------------------------------|------------------------|
| SURVEYED BY: DALLAS NIELSEN, B.C. | DATE: 03-25-15 |
| DRAWN BY: J.S. | DATE DRAWN: 03-27-15 |
| SCALE: 1" = 1000' | REVISED: 10-21-15 C.C. |

WELL LOCATION PLAT