

Décollement Consulting Inc.



Scale: 5" / 100'
Measured Depth Log

Well Name North Platte K21-O24-34HC_Lateral

Location SE/SW Section 27, T5N - R63W

State CO

County Weld

Country USA

Rig Number Xtreme 22

API Number 05-123-41885

Field Wattenberg

Region D.J. Basin

Drilling Completed 10/3/2015

Spud Date 9/5/2015

Surface Coordinates 1153 FNL x 2473 FWL (Lat: 40.36638, -104.42240)

Bottom Hole Coordinates 470 FSL x 2256 FWL (Lat: 40.35002, -104.42321)

Ground Elevation 4,541

K.B. Elevation 4,558

Logged Interval 6936 To 11,291

Total Depth 11,291

Formation Codell

Type of Drilling Fluid Water Based Mud

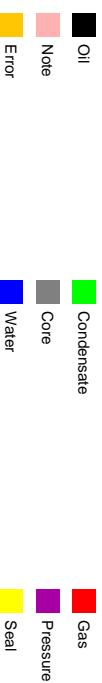
Operator

Address Bonanza Creek Energy, Inc.
410 17th Street, Suite 1500
Denver, Colorado 80202

Geologist

Name Dan Kabala & Brian Spitzmiller
Company Decollement Consulting Inc.
Address 13300 Braun Rd.
Golden, CO. 80401

Zone Color Coding



Rock Types

Blank



CHALK

CEMENT



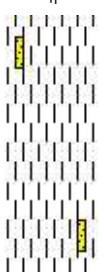
LIMESTONE



SANDSTONE



MPF



SHALE S



SHALE SF



CPF



MARLSTONE



SHALE



CodeII

Accessories

Fossils

- ALGAE
- AMPHIPORA
- BELEMITE
- BIOCLASTIC
- BRACHIOPOD
- BRYOZOA
- CEPHALOPOD
- CORAL
- CRINOID
- ECHINOID
- FISH
- FORAMINIFERA

F FOSSIL

GASTROPOD

OOLITE

OSTRACOD

PELECYPOD

PELLET

PISOLITE

PLANT REMAINS

PLANT SPORES

SCAPHOPOD

STROMATOPOROID

Minerals

ANHYDRITIC

ARGILLACEOUS

ARGILLITE GRAIN

BENTONITE

BITUMENOUS SUBSTANCE

BRECCIA FRAGMENTS

CALCAREOUS

CARBONACEOUS FLAKES

CHTDK

CHTLT

COAL - THIN BEDS

DOLOMITIC

FELDSPAR

FERRUGINOUS PELLET

FERRUGINOUS

GLAUCONITE

GYPSIFEROUS

HEAVY MINERAL

KAOLIN

MARLSTONE

MINERAL CRYSTALS

NODULES

PHOSPHATE PELLETS

PYRITE

SALT CAST

SANDY

SILICEOUS

SILTY

TUFFACEOUS

Stringer

- ANHYDRITE STRINGER
- BENTONITE STRINGER
- COAL STRINGER
- DOLOMITE STRINGER
- GYPSUM STRINGER
- LIMESTONE STRINGER
- MARLSTONE (CALC) STRG
- MARLSTONE (DOL) STRG
- SANDSTONE STRINGER
- SHALE STRINGER
- SILTSTONE STRINGER

Other Symbols

ORGANIC	FORMATION TOP	LITHOGRAPHIC
SHOW		

PINPOINT	GAS SHOW	MICROXLN
----------	----------	----------

LEAD	VUGGY	MN DEPTH	ANGULAR	MUDSTONE
------	-------	----------	---------	----------

VEN	NORMAL FAULT	ROUNDED	PACKSTONE
-----	--------------	---------	-----------

QUESTIONABLE	OIL SHOW	SUBANG	WACKESTONE
--------------	----------	--------	------------

SPOTTED STAINING	BIT	OVERTURNED STRATA	SUBRND
------------------	-----	-------------------	--------

CASING	REVERSE FAULT
--------	---------------

osity	Textures
-------	----------

CONNECTION (LEFT)	SIDEWALL CORE (LEFT)	MODERATE
-------------------	----------------------	----------

CONNECTION (RIGHT)	SIDEWALL CORE (RIGHT)	BOUNDSTONE	POOR
--------------------	-----------------------	------------	------

CONNECTION GAS	SLIDE	CHALKY	WELL
----------------	-------	--------	------

RACTURE	CORE - LOST	SURVEY	CRYPTOXLN
---------	-------------	--------	-----------

INTERCRYSTALLINE	CORE - RECOVERED	TRIP GAS	EARTHY
------------------	------------------	----------	--------

INTEROOLITIC	DST INTERVAL	WIRELINE TESTED - LEFT	FINELYXLN
--------------	--------------	------------------------	-----------

OLDIC	FAULT	WIRELINE TESTED - RT	GRAINSTONE
-------	-------	----------------------	------------

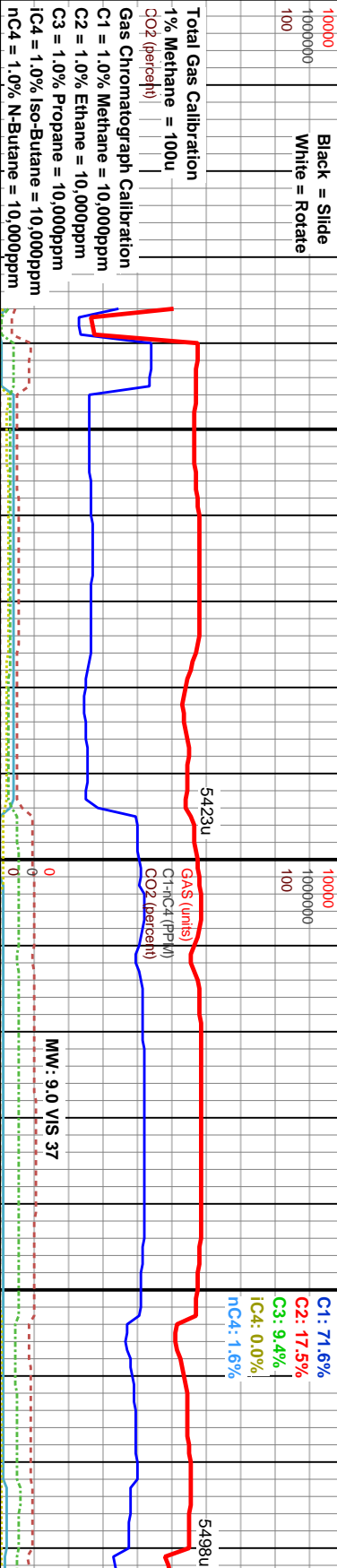
Slide/Rotate

Depth



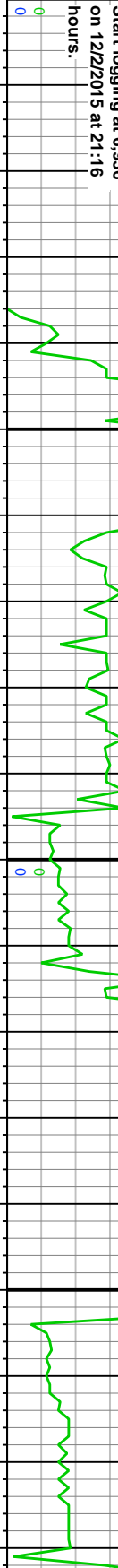
Total Gas & Chromatography

- GAS
- C1
- C2
- C3
- iC4
- nC4
- CO2

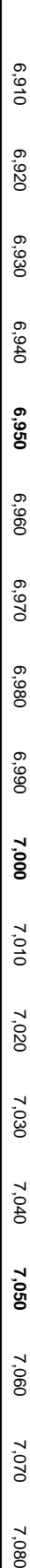


Curves

- ROP
- Gamma



Depth Labels

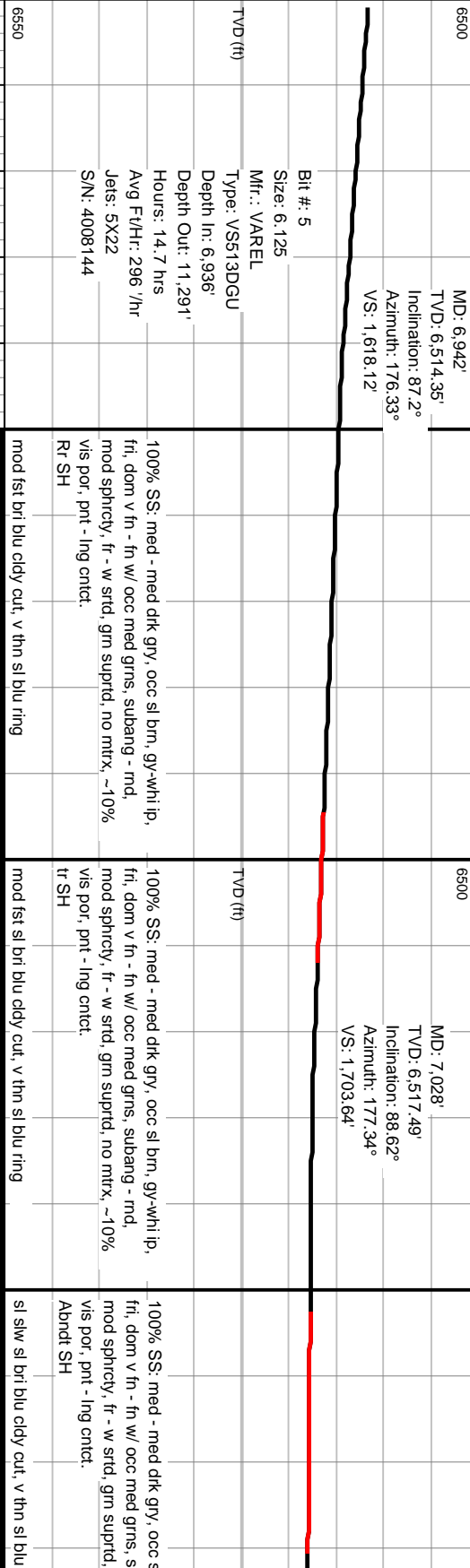


Interpretive Lithology

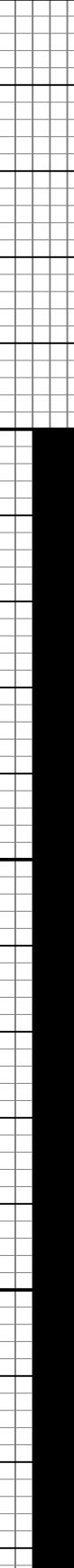


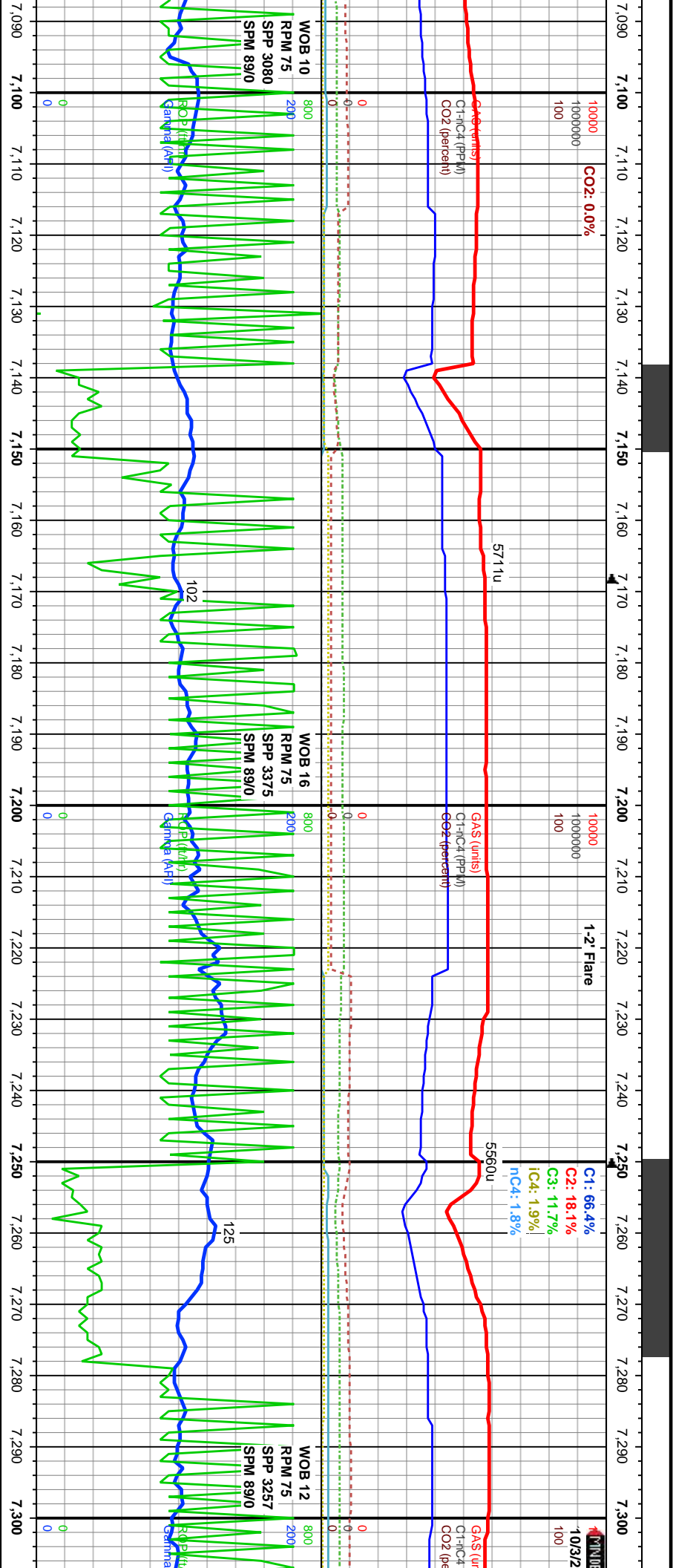
Well Bore

TVD

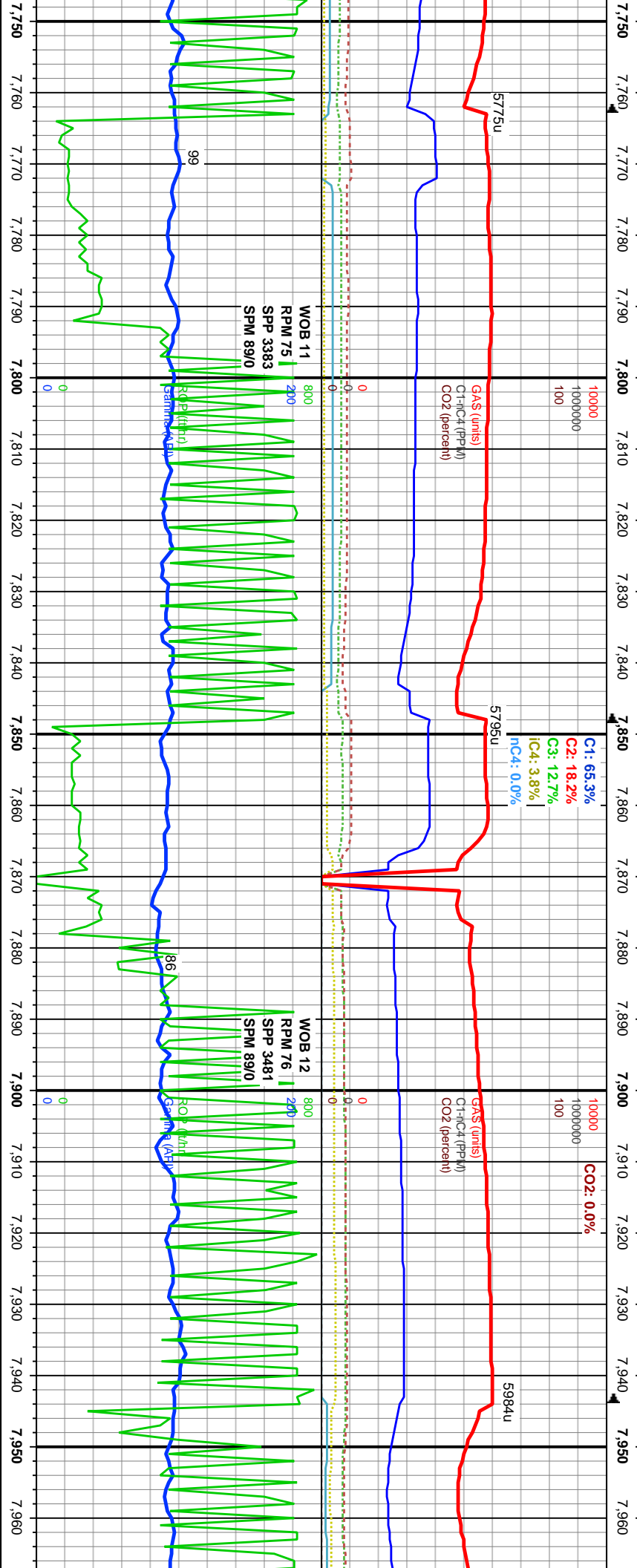


Oil Show

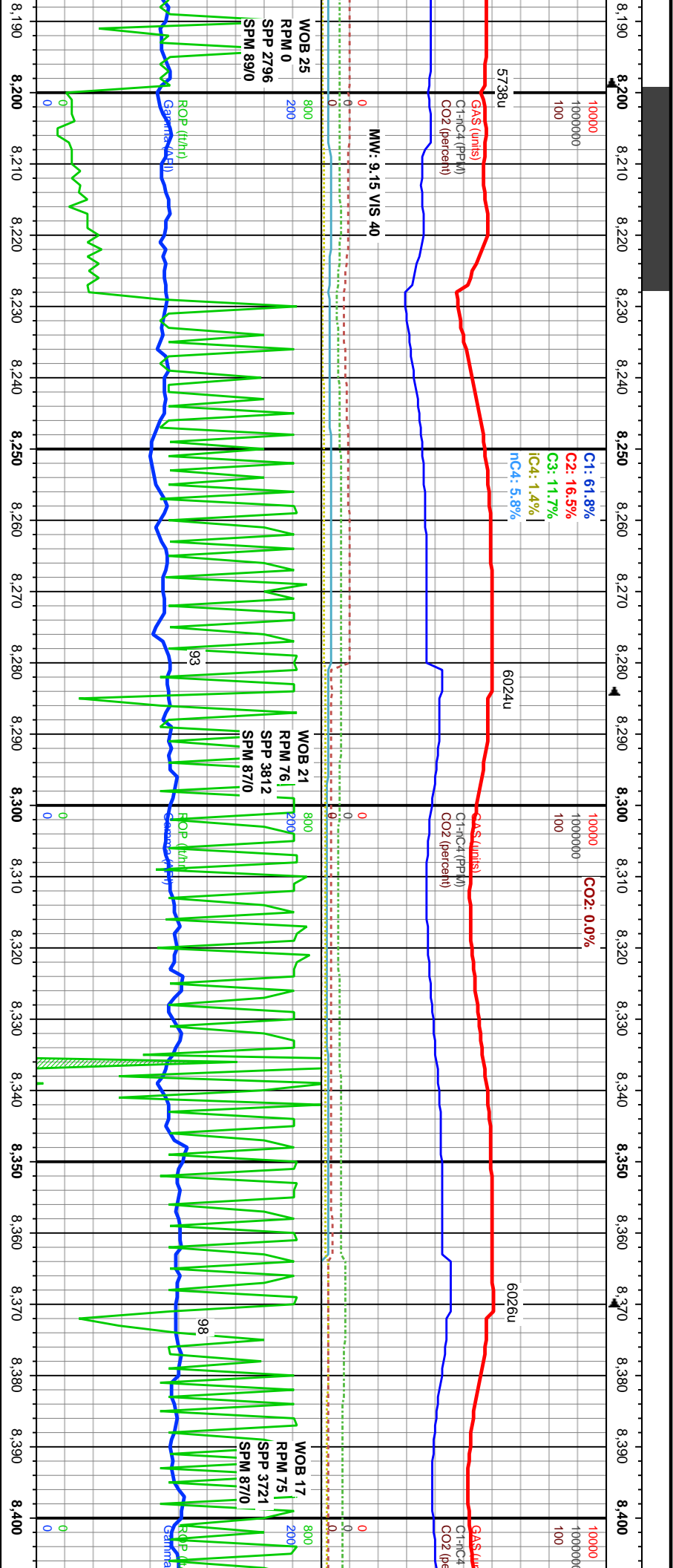




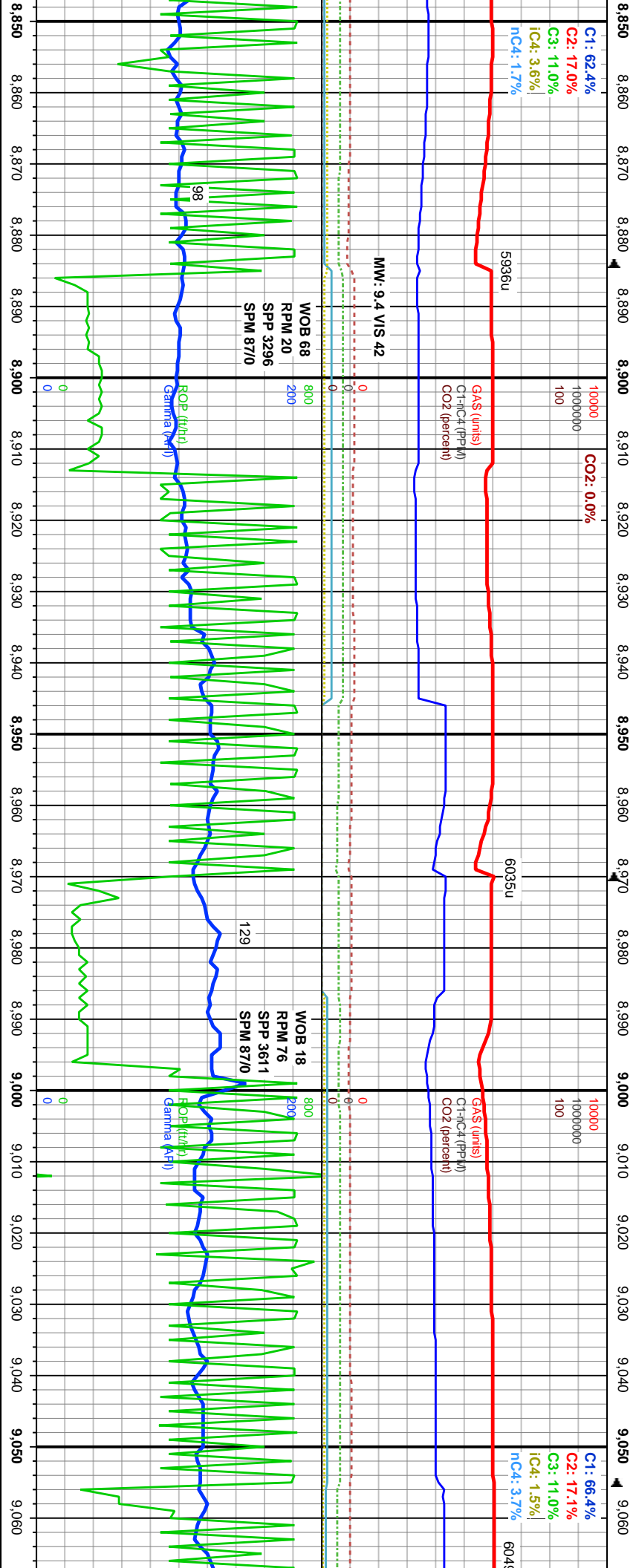
6500	MD: 7,114' TVD: 6,518.2' Inclination: 90.43° Azimuth: 179.98° VS: 1,789.44'	100% SS: med - med dk gry, occ sl brn, gy-whi ip, fri, don v fn - fn w/ occ med grns, subang - rnd, mod sphrcty, fr - w strd, gm suprd, no mtrx, ~10% vis por, pnt - lng cntct.	mod fst sl brn blu cldy cut, v thn sl blu ring
6500	MD: 7,199' TVD: 6,516.33' Inclination: 92.09° Azimuth: 180.93° VS: 1,874.37'	100% SS: med - med dk gry, occ sl brn, gy-whi ip, fri, don v fn - fn w/ occ med grns, subang - rnd, mod sphrcty, fr - w strd, gm suprd, no mtrx, ~10% vis por, pnt - lng cntct.	mod fst sl brn blu cldy cut, sl thck sl blu ring
6500	MD: 7,285' TVD: 6,513.74' Inclination: 91.36° Azimuth: 180.45° VS: 1,960.29'	100% SS: med - med dk gry, occ sl brn, gy-whi ip, fri, don v fn - fn w/ occ med grns, subang - rnd, mod sphrcty, fr - w strd, gm suprd, no mtrx, ~10% vis por, pnt - lng cntct.	mod fst sl brn blu bleeding cut, mod thn sl blu ring



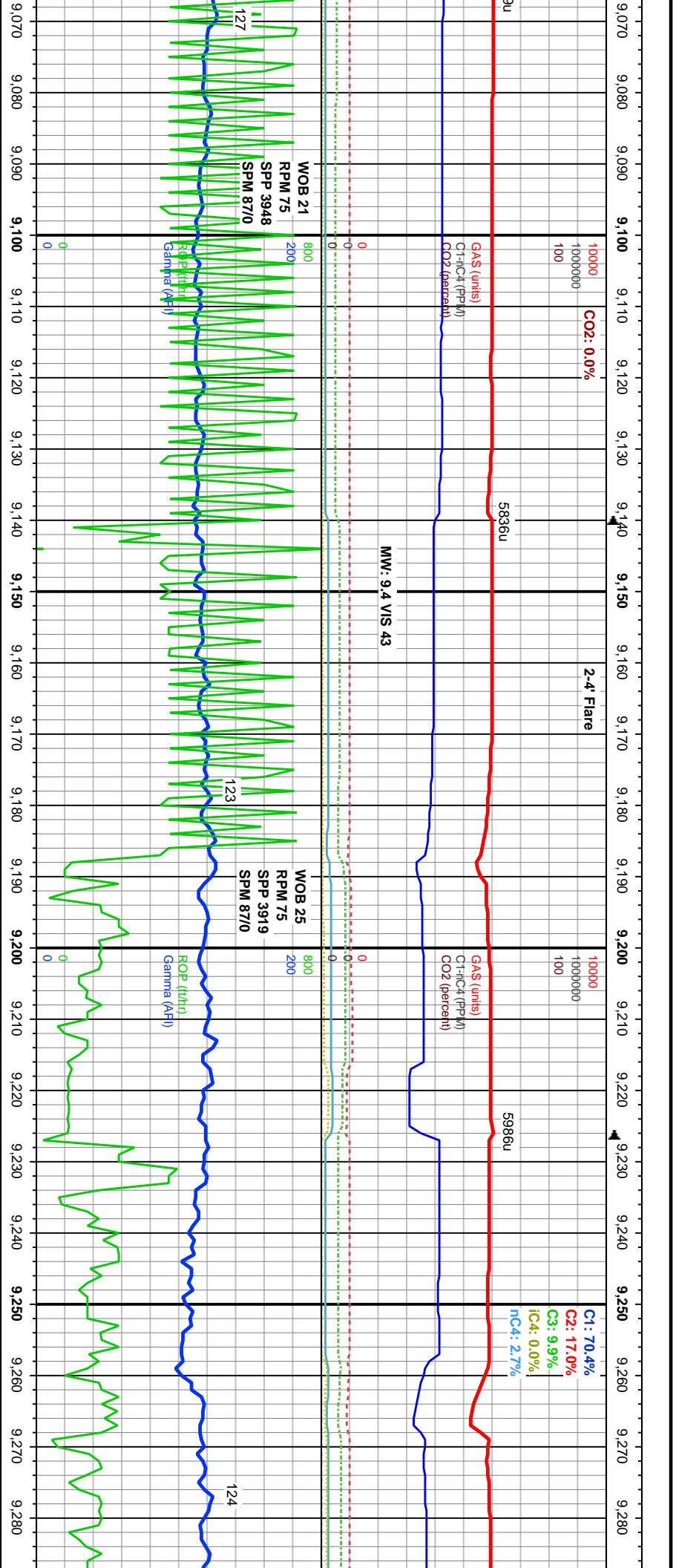
MD: 7.802') TVD: 6.512.99' Inclination: 90.8° Azimuth: 180.86° VS: 2.477.18'		MD: 7.867' TVD: 6.513.01' Inclination: 89.17° Azimuth: 180.26° VS: 2.562.13'		MD: 7.887' TVD: 6.513.01' Inclination: 89.17° Azimuth: 180.26° VS: 2.562.13'		MD: 7.887' TVD: 6.513.01' Inclination: 89.17° Azimuth: 180.26° VS: 2.562.13'		MD: 7.887' TVD: 6.513.01' Inclination: 89.17° Azimuth: 180.26° VS: 2.562.13'	
95% SS: med - med drk gry, occ sl brn, gy-whi ip, fri, dom v fn - fn w/ occ med grs, subang - ind, mod sphrcty, fr - w strd, gm suprd, no mtrx, ~10% vis por, pnt - lng cntct. 5% SH		95% SS: med - med drk gry, occ sl brn, gy-whi ip, fri, dom v fn - fn w/ occ med grs, subang - ind, mod sphrcty, fr - w strd, gm suprd, no mtrx, ~10% vis por, pnt - lng cntct. 5% SH		100% SS: med - med drk gry, occ sl brn, gy-whi ip, fri, dom v fn - fn w/ occ med grs, subang - ind, mod sphrcty, fr - w strd, gm suprd, no mtrx, ~10% vis por, pnt - lng cntct. rr SH		100% SS: med - med drk gry, occ sl brn, gy-whi ip, fri, dom v fn - fn w/ occ med grs, subang - ind, mod sphrcty, fr - w strd, gm suprd, no mtrx, ~10% vis por, pnt - lng cntct. rr SH		100% SS: med - med drk gry, occ sl brn, gy-whi ip, fri, dom v fn - fn w/ occ med grs, subang - ind, mod sphrcty, fr - w strd, gm suprd, no mtrx, ~10% vis por, pnt - lng cntct. rr SH	
mod fst sl brl blu cldy cut, v thn sl blu ring		mod fst sl brl blu cldy cut, v thn sl blu ring		mod fst sl brl blu cldy cut, v thn sl blu ring		mod fst sl brl blu cldy cut, v thn sl blu ring		mod fst sl brl blu cldy cut, v thn sl blu ring	



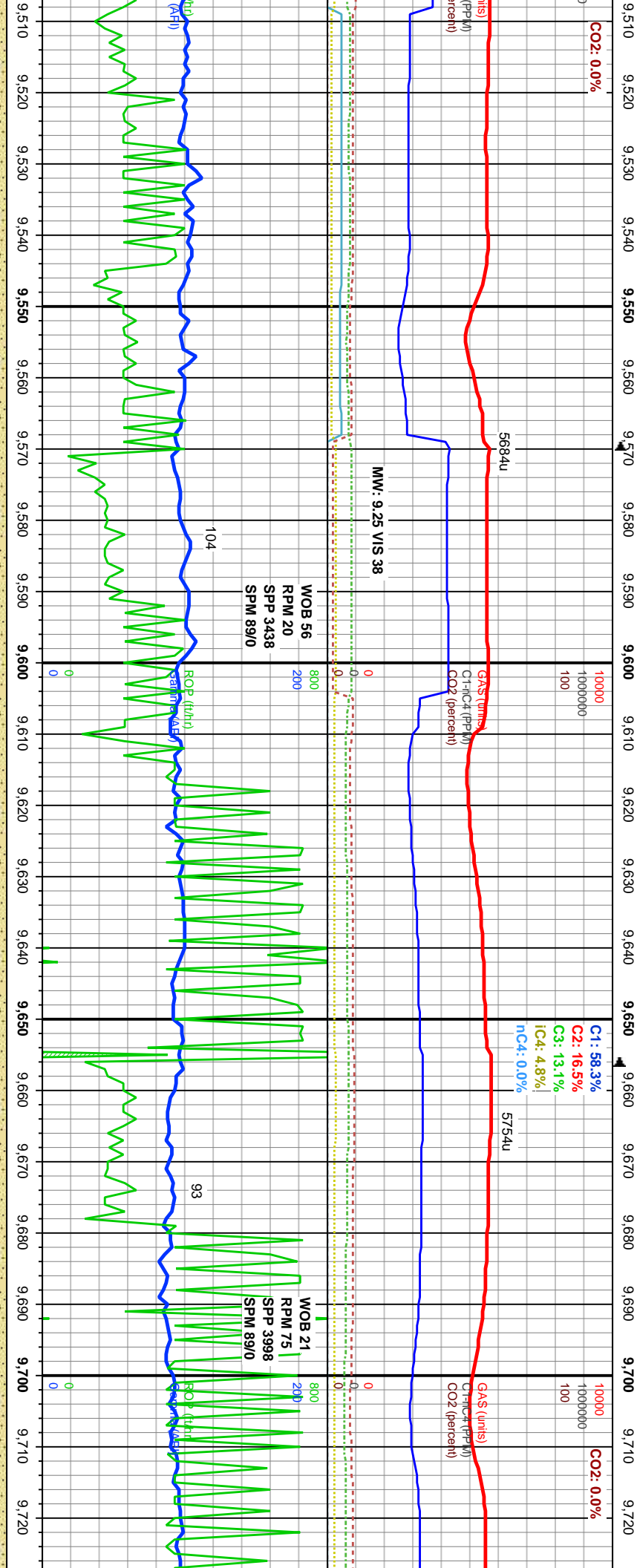
MD: 8.231' TVD: 6.513.2' Inclination: 89.04° Azimuth: 178.74° VS: 2.905.65'		MD: 8.316' TVD: 6.514.53' Inclination: 89.16° Azimuth: 177.97° VS: 2.990.42'		MD: 8.401'.00 TVD: 6.515.25' Inclination: 89.87° Azimuth: 177.84° VS: 3.075.15'	
6500		6500		6500	
TVD (ft)		TVD (ft)		TVD (ft)	
100% SS: med - med dk gry, occ sl brn, gy-whi ip, fri, dom v fn - fn w/ occ med grns, subang - md, mod sphrcty, fr - w strd, gm suprd, no mtrx, ~10% vis por, pnt - lng cntct.		100% SS: med - med dk gry, occ sl brn, gy-whi ip, fri, dom v fn - fn w/ occ med grns, subang - md, mod sphrcty, fr - w strd, gm suprd, no mtrx, ~10% vis por, pnt - lng cntct.		100% SS: med - med dk gry, occ sl brn, gy-whi ip, fri, dom v fn - fn w/ occ med grns, subang - md, mod sphrcty, fr - w strd, gm suprd, no mtrx, ~10% vis por, pnt - lng cntct.	
tr SH		tr SH		tr SH	
mod fst sl bri blu strng cut, thn sl blu ring		mod fst sl bri blu strng cut, thn sl blu ring		mod fst sl bri blu strng cut, thn sl blu ring	
6550		6550		6550	



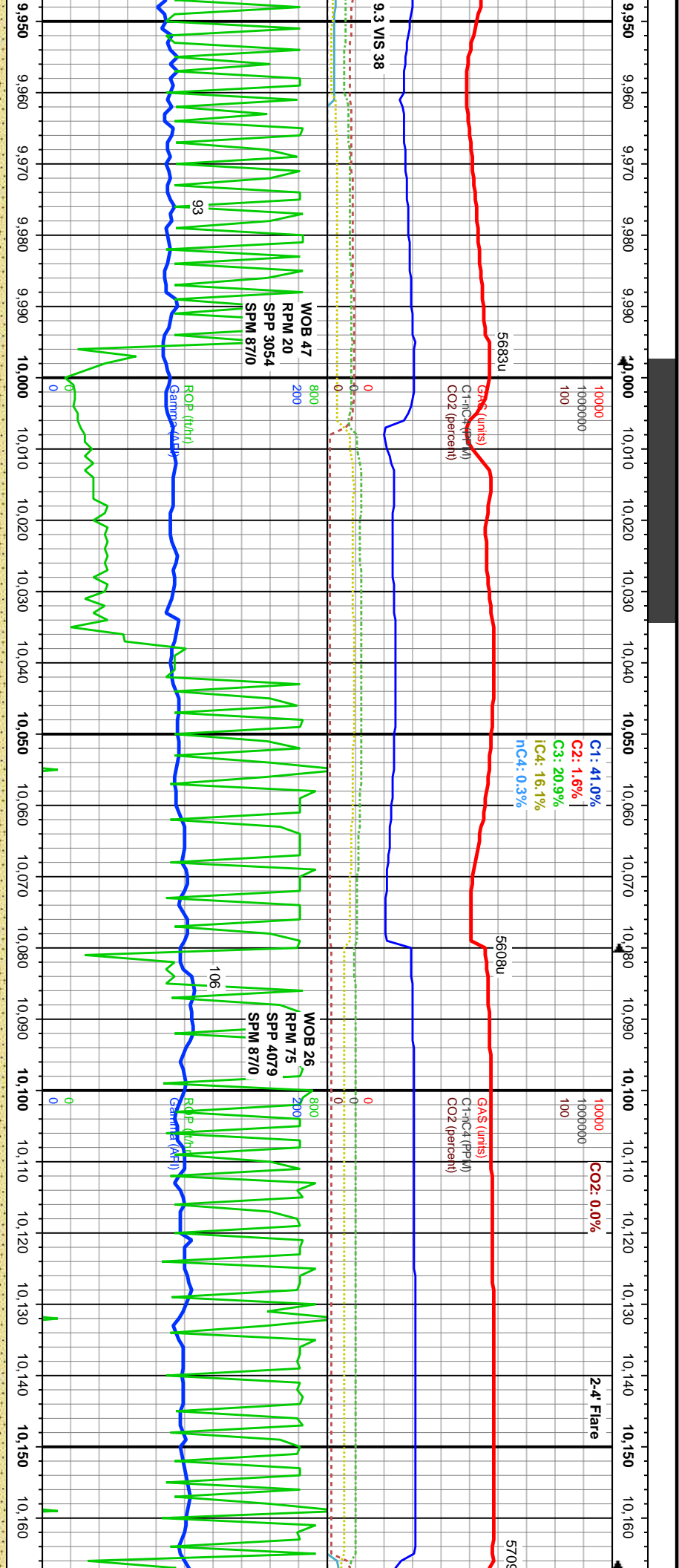
	6500 MD: 8,914' TVD: 6,514.61' Inclination: 89.47° Azimuth: 178.57° VS: 3,586.19'				
	6500	100% SS: med - med dk gry, occ sl brn, gy-whi ip, fri, dom v fn - fn w/ occ med grns, subang - md, mod sphrcty, fr - w strd, grn suprd, no mtrx, ~10% vis por, pnt - lng cntct, tr SH	TVD (ft)		
vry fst sl bri blu strng cut, thn sl blu ring					
	MD: 9,000' :500 TVD: 6,515.26' Inclination: 89.66° Azimuth: 180.22° VS: 3,672.07'				
	6550	95% SS: med - med dk gry, occ sl brn, gy-whi ip, fri, dom v fn - fn w/ occ med grns, subang - md, mod sphrcty, fr - w strd, grn suprd, no mtrx, ~10% vis por, pnt - lng cntct, 5%SH: drk gry-blk ip, dll-rthy lst, sily txt, bdr ctngs, drse brittle ten,	TVD (ft)		
fst sl bri blu strng cut, thn sl blu ring					
	6550	95% SS: med - med dk gry, occ sl brn, gy-whi ip, fri, dom v fn - fn w/ occ med grns, subang - md, mod sphrcty, fr - w strd, grn suprd, no mtrx, ~10% vis por, pnt - lng cntct, 5%SH: drk gry-blk ip, dll-rthy lst, sily txt, bdr ctngs, drse brittle ten,			
fst sl bri blu strng					



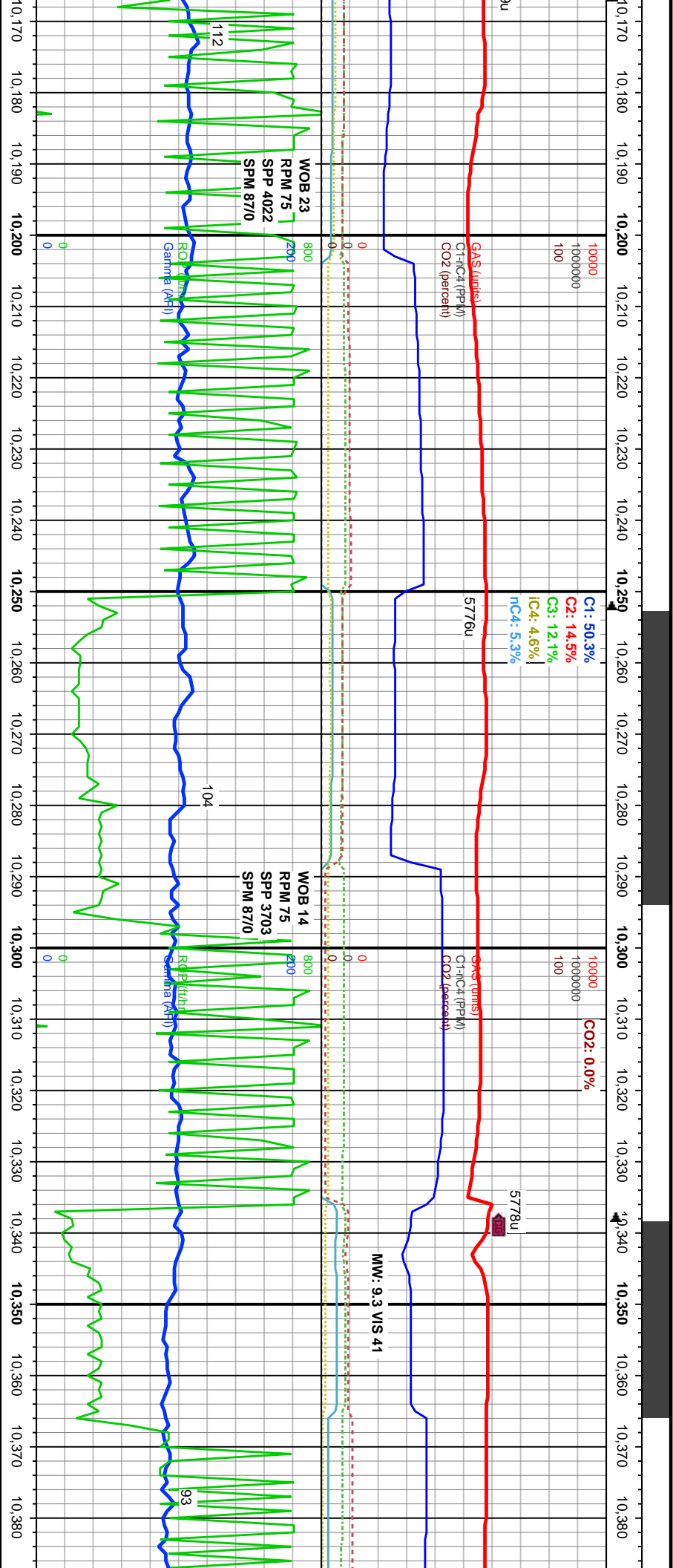
MD: 9.085' TVD: 6,515.34' Inclination: 90.24° Azimuth: 180.48° VS: 3,757.01'		6500	MD: 9.173' TVD: 6,514.59' Inclination: 90.73° Azimuth: 180.49° VS: 3,844.95'		6500	MD: 9.260' TVD: 6,513.6' Inclination: 90.58° Azimuth: 180.02° VS: 3,931.88'	
95% SS: med - med dk gry, occ sl brn, gy-whi ip, fri, dom v fn - fn w/ occ med grns, subang - rnd, mod sphrcty, fr - w strd, grn suprd, no mtrx, ~10% vis por, pnt - lng cntct. 5%SH: dk gry-blk ip, dll-rthy lsfr, silty txt, tblr cngs, dnse brittle ten.		TVD (ft)	90% SS: med - med dk gry, occ sl brn, gy-whi ip, fri, dom v fn - fn w/ occ med grns, subang - rnd, mod sphrcty, fr - w strd, grn suprd, no mtrx, ~10% vis por, pnt - lng cntct. 10%SH: dk gry-blk ip, dll-rthy lsfr, silty txt, tblr cngs, dnse brittle ten.		TVD (ft)	90% SS: med - med dk gry, occ sl brn, gy-whi ip, fri, dom v fn - fn w/ occ med grns, subang - rnd, mod sphrcty, fr - w strd, grn suprd, no mtrx, ~10% vis por, pnt - lng cntct. 10%SH: dk gry-blk ip, dll-rthy lsfr, silty txt, tblr cngs, dnse brittle ten.	
fst sl bri blu strmg cut, thn sl blu ring		6550	fst sl bri blu strmg cut, thn sl blu ring		6550	fst sl bri blu strmg cut, thn sl blu ring	



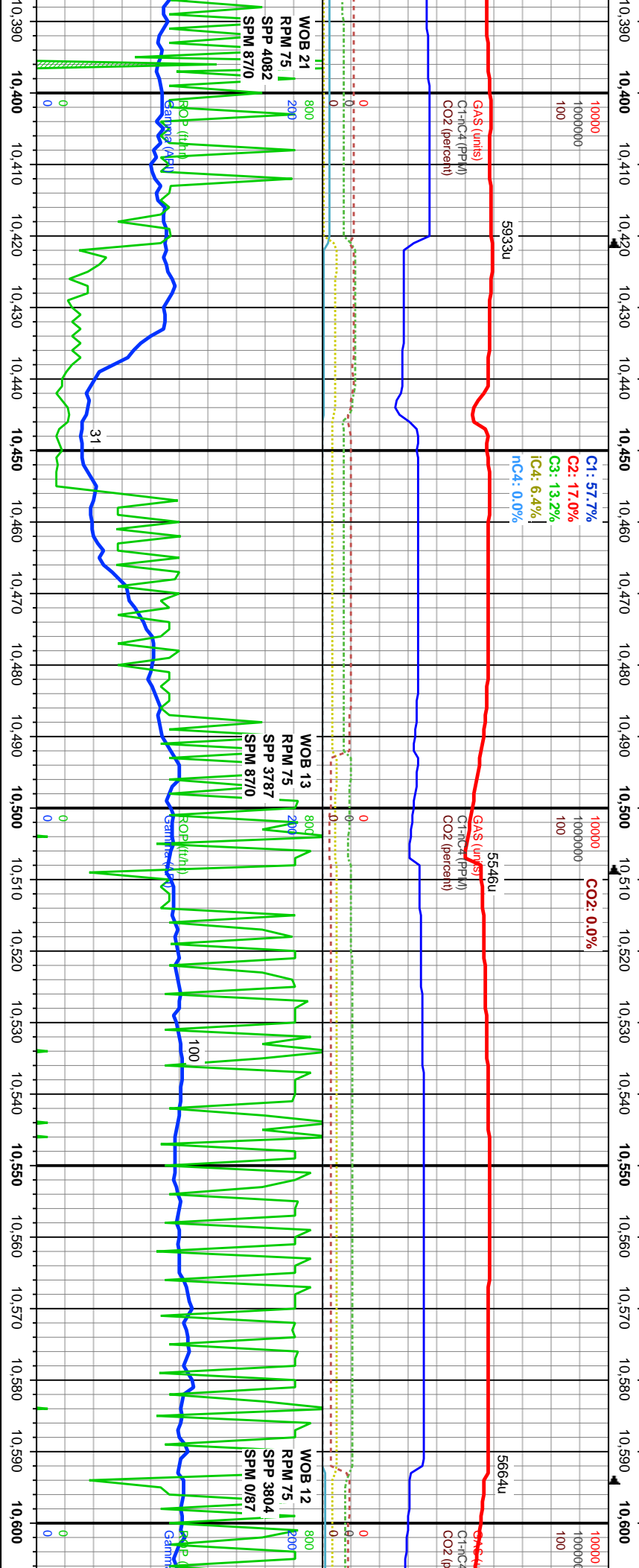
MD: 9.516' TVD: 6.509.08' Inclination: 91.32° Azimuth: 178.01° VS: 4.187.34'	MD: 9.601'.00 TVD: 6.507.4' Inclination: 90.95° Azimuth: 179.06° VS: 4.272.13'	MD: 9.686' TVD: 6.506.42' Inclination: 90.37° Azimuth: 179.95° VS: 4.357.01'	6500
3: med - med dk gry, occ sl brn, gy-whi ip, hchicy, fr - w strd, grn suprd, no mtrx, ~10% pnt - lng cntct.	100% SS: med - med dk gry, occ sl brn, gy-whi ip, fri, dom v fn - fn w/ occ med grns, subang - md, mod sphricy, fr - w strd, grn suprd, no mtrx, ~10% vis por, pnt - lng cntct.	100% SS: med - med dk gry, occ sl brn, gy-whi ip, fri, dom v fn - fn w/ occ med grns, subang - md, mod sphricy, fr - w strd, grn suprd, no mtrx, ~10% vis por, pnt - lng cntct.	100% SS: med - med dk gry, occ sl brn, gy-whi ip, fri, dom v fn - fn w/ occ med grns, subang - md, mod sphricy, fr - w strd, grn suprd, no mtrx, ~10% vis por, pnt - lng cntct.
blu strmg cut, thn sl blu ring	fst sl bri blu strmg cut, thn sl blu ring	fst sl bri blu strmg cut, thn sl blu ring	mod fst sl bri blu strmg cut, thn



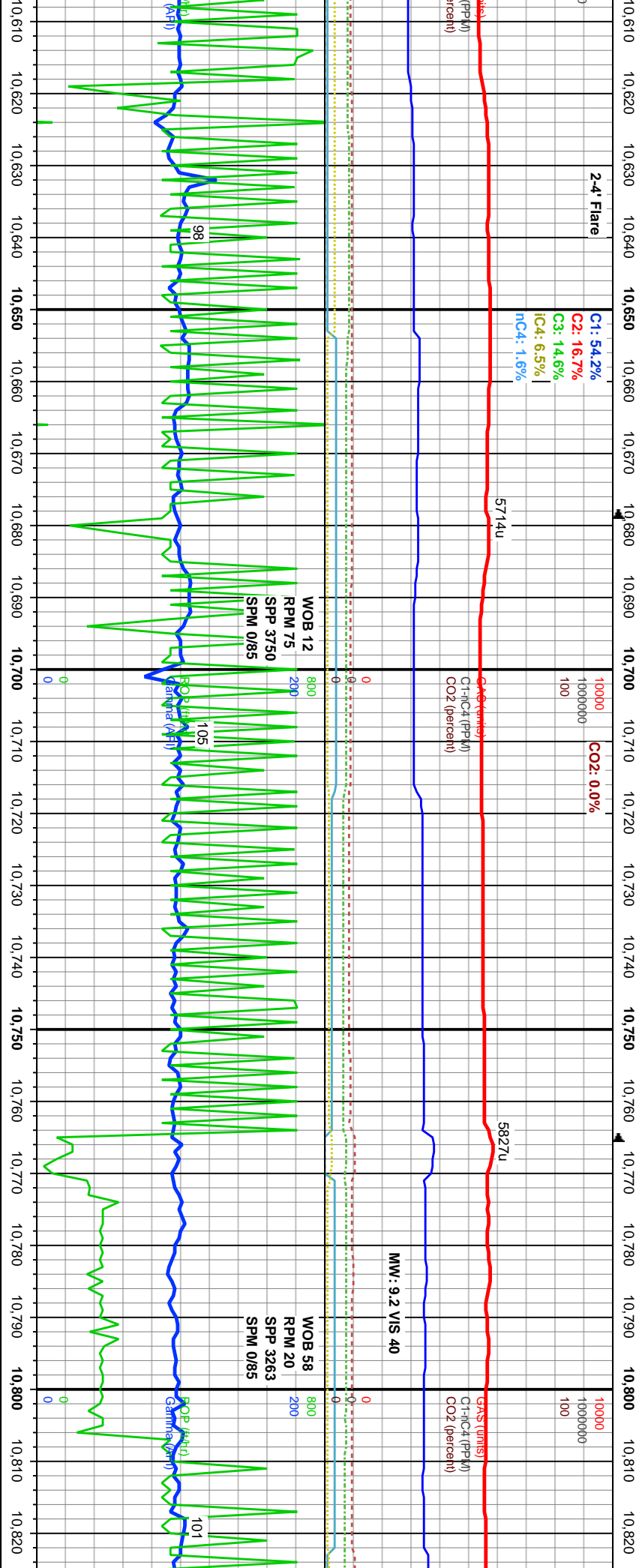
MD: 10,028'		MD: 10,113'	
TVD: 6,507.75'		TVD: 6,508.33'	
Inclination: 89.63°		Inclination: 89.59°	
Azimuth: 180.24°		Azimuth: 180.09°	
VS: 4,698.51'		VS: 4,783.44'	
100% SS: med - med dk gry, occ sl brn, gy-whi lp, fri, dom v fn - fn w/ occ med grns, subang - md, mod sphrcty, fr - w strd, gm suprd, no mtrx, ~10% vis por, pnt - lng cntct, tr SH		100% SS: med - med dk gry, occ sl brn, gy-whi lp, fri, dom v fn - fn w/ occ med grns, subang - md, mod sphrcty, fr - w strd, gm suprd, no mtrx, ~10% vis por, pnt - lng cntct, tr SH	
TVD (ft)		TVD (ft)	
fst sl bri blu string cut, thn sl blu ring		fst sl bri blu string cut, thn sl blu ring	



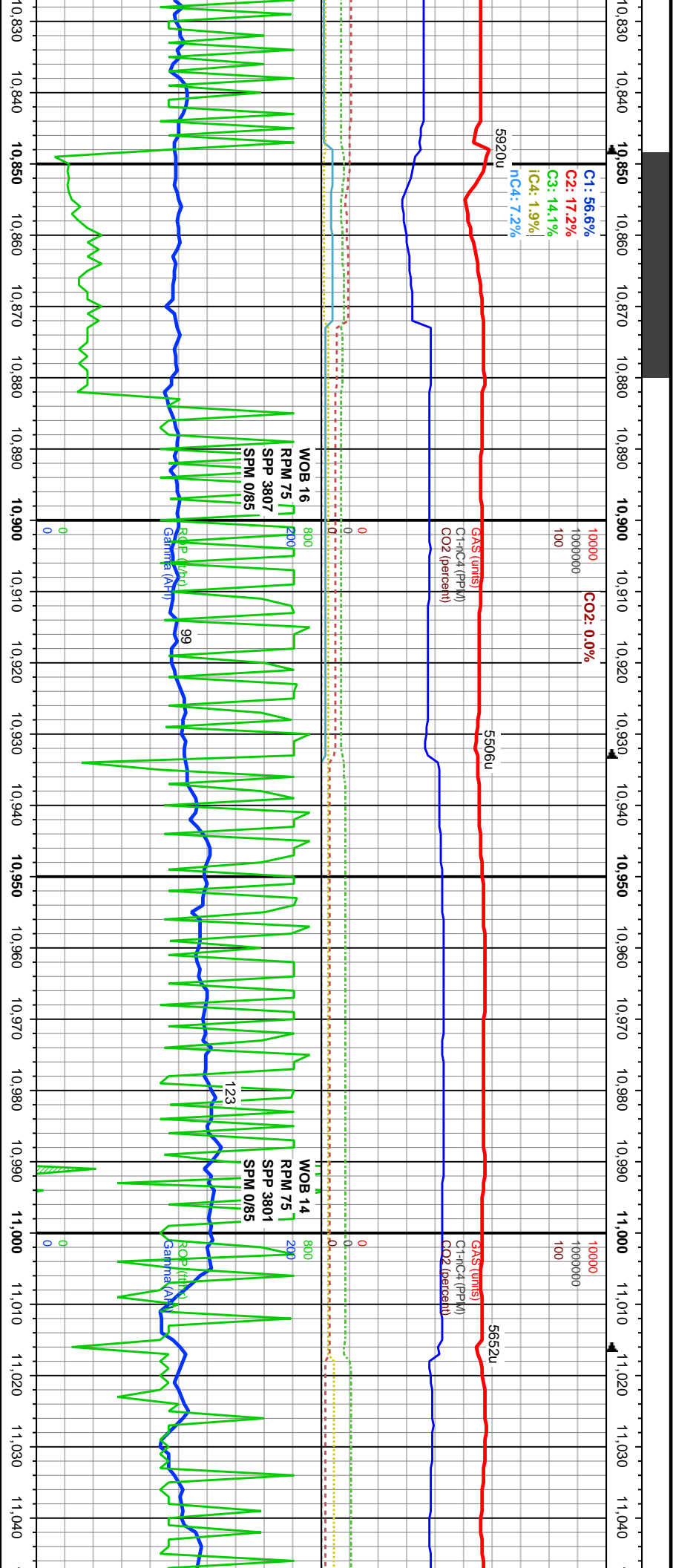
MD: 10,198' 6500 TVD: 6,508.96' Inclination: 89.56° Azimuth: 178.82° VS: 4.868.32'		MD: 10,284' 6500 TVD: 6,508.21' Inclination: 91.44° Azimuth: 180.44° VS: 4.954.21'		MD: 10,369' 6500 TVD: 6,506.27' Inclination: 91.17° Azimuth: 181.7° VS: 5.039.16'	
100% SS: med - med dk gry, occ sl brn, gy-whi ip, fri, dom v fn - fn w/ occ med grns, subang - md, mod sphrcty, fr - w strd, gm suprd, no mtrx, ~10% vis por, pnt - lng cntct, tr SH		100% SS: med - med dk gry, occ sl brn, gy-whi ip, fri, dom v fn - fn w/ occ med grns, subang - md, mod sphrcty, fr - w strd, gm suprd, no mtrx, ~10% vis por, pnt - lng cntct, tr SH		95% SS: med - med dk gry, occ sl brn, gy-whi ip, fri, dom v fn - fn w/ occ med grns, subang - md, mod sphrcty, fr - w strd, gm suprd, no mtrx, ~10% vis por, pnt - lng cntct, 5%SH: dk gry-blk ip, dll-rthy lstr, silty txf, dnse brittle ten,	
fst sl bri blu strmg cut, thn sl blu ring		fst sl bri blu strmg cut, thn sl blu ring		fst sl bri blu strmg cut, thn sl blu ring	



6500	MD: 10.455' TVD: 6,506.39' Inclination: 88.67° Azimuth: 180.89° VS: 5.125.13	6500	MD: 10.540' TVD: 6,508.2' Inclination: 88.89° Azimuth: 179.71° VS: 5.210.05	6500
<p>TVD (ft)</p> <p>70% SS: med - med drk gry, occ sl brn, gy-whi ip, ffr, dom v fn - fn w/ occ med grns, subang - md, mod sphrcty, fr - w srfd, gm suprd, no mtrx, ~10% vis por, pnt - ling cnctd.</p> <p>30% LS: wh-crm, frm - v hd, mcrct tex, pily - sb blkly tr SH: drk gry-blk ip, dll-rthy lstr, silty txt, tbr crngs, dnse brittle ten,</p> <p>mod fst sl bri blu strmg cut, thn sl blu ring</p> <p>6550</p>	<p>TVD (ft)</p> <p>50% SS: med - med drk gry, occ sl brn, gy-whi ip, ffr, dom v fn - fn w/ occ med grns, subang - md, mod sphrcty, fr - w srfd, gm suprd, no mtrx, ~10% vis por, pnt - ling cnctd.</p> <p>50% LS: wh-crm, frm - v hd, mcrct tex, pily - sb blkly tr SH: drk gry-blk ip, dll-rthy lstr, silty txt, tbr crngs, dnse brittle ten,</p> <p>mod fst sl bri blu strmg cut, thn sl blu ring</p> <p>6550</p>	<p>TVD (ft)</p> <p>60% SS: med - med drk gry, occ sl brn, gy-whi ip, ffr, dom v fn - fn w/ occ med grns, subang - md, mod sphrcty, fr - w srfd, gm suprd, no mtrx, ~10% vis por, pnt - ling cnctd.</p> <p>40% LS: wh-crm, frm - v hd, mcrct tex, pily - sb blkly tr SH: drk gry-blk ip, dll-rthy lstr, silty txt, tbr crngs, dnse brittle ten,</p> <p>mod fst sl bri blu cdy cut, thn sl blu ring</p> <p>6550</p>	<p>TVD (ft)</p> <p>80% SS: med - med drk gry, occ sl brn, gy-whi ip, ffr, dom v fn - fn w/ occ med grns, subang - md, mod sphrcty, fr - w srfd, gm suprd, no mtrx, ~10% vis por, pnt - ling cnctd.</p> <p>20% LS: wh-crm, frm - v hd, mcrct tex, pily - sb blkly tr SH: drk gry-blk ip, dll-rthy lstr, silty txt, tbr crngs, dnse brittle ten,</p> <p>mod fst sl bri blu strmg cut, thn sl blu ring</p> <p>6550</p>	<p>TVD (ft)</p> <p>90% SS: med - med drk gry, occ sl brn, gy-whi ip, ffr, dom v fn - fn w/ occ med grns, subang - md, mod sphrcty, fr - w srfd, gm suprd, no mtrx, ~10% vis por, pnt - ling cnctd.</p> <p>10% LS: wh-crm, frm - v hd, mcrct tex, pily - sb blkly tr SH: drk gry-blk ip, dll-rthy lstr, silty txt, tbr crngs, dnse brittle ten,</p> <p>mod fst sl bri blu strmg cut, thn sl blu ring</p> <p>6550</p>



S: med - med dk gry, occ sl brn, gy-whi ip, v fn - fn w/ occ med grns, subang - rnd, shrcy, fr - w strd, gm suprd, no mtrx, ~10% pnt - lng cntct. S: wh-crm, frm - v hd, mctic tex, ply - sb blkly r dk gry-blk ip, dl-rthy lstr, slty txt, tblr chngs, ten, bri blu strmg cut, sl thck sl blu ring	MD: 10,626' TVD: 6,509.1' Inclination: 89.91° Azimuth: 180.09° VS: 5,295.96'	95% SS: med - med dk gry, occ sl brn, gy-whi ip, fri, dom v fn - fn w/ occ med grns, subang - rnd, mod sphrcy, fr - w strd, gm suprd, no mtrx, ~10% vis por, pnt - lng cntct. 5% LS: wh-crm, frm - v hd, mctic tex, ply - sb blkly rr SH: dk gry-blk ip, dl-rthy lstr, slty txt, tblr chngs, dnse brittle ten,	6MD: 10,711' TVD: 6,508.73' Inclination: 90.59° Azimuth: 179.44° VS: 5,380.87'	100% SS: med - med dk gry, occ sl brn, gy-whi ip, fri, dom v fn - fn w/ occ med grns, subang - rnd, mod sphrcy, fr - w strd, gm suprd, no mtrx, ~10% vis por, pnt - lng cntct. rr SH: dk gry-blk ip, dl-rthy lstr, slty txt, tblr chngs, dnse brittle ten,	100% SS: med - med dk gry, occ sl brn, gy-whi ip, fri, dom v fn - fn w/ occ med grns, subang - rnd, mod sphrcy, fr - w strd, gm suprd, no mtrx, ~10% vis por, pnt - lng cntct. rr SH: dk gry-blk ip, dl-rthy lstr, slty txt, tblr chngs, dnse brittle ten,	MD: 10,797' TVD: 6,507.94' Inclination: 90.46° Azimuth: 181.89° VS: 5,466.82'	100% SS: med - med dk gry, fri, dom v fn - fn w/ occ med g mod sphrcy, fr - w strd, gm s vis por, pnt - lng cntct. rr SH: dk gry-blk ip, dl-rthy lstr, dnse brittle ten,	mod fst sl bri blu strmg cut, sl thck sl blu ring	fst sl bri blu strmg cut, thn sl blu ring	fst sl bri blu strmg cut, thck sl blu ring	mod fst sl bri blu strmg cut, th
	TVD (ft)	TVD (ft)	TVD (ft)	TVD (ft)	TVD (ft)	TVD (ft)	TVD (ft)				



C1: 56.6%
C2: 17.2%
C3: 14.1%
iC4: 1.9%
nC4: 7.2%

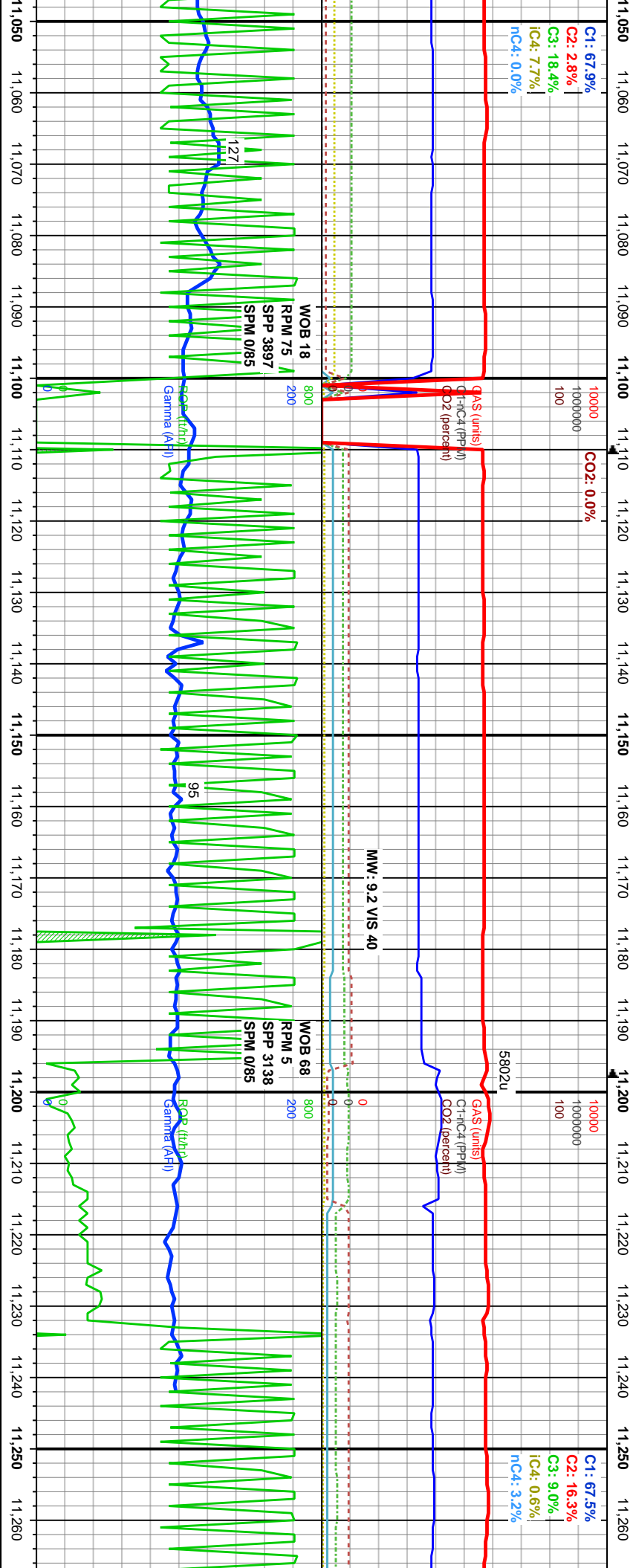
10000
1000000
100
CO2: 0.0%

10000
1000000
100

MD: 10,882'
TVD: 6,508.45'
Inclination: 88.86°
Azimuth: 180.07°
VS: 5.551.78'

MD: 10,968'
TVD: 6,509.69'
Inclination: 89.48°
Azimuth: 180.4°
VS: 5.637.71'

occ sl brn, gy-whi ip, fti, dom v fn - fn w/ occ med grns, subang - md, mod sphrcly, fr - w strd, gm suprd, no mtrx, ~10% vis por, pnt - lng cnct, tr SH: dtk gry-blk ip, dli-rthy lstr, slty txt, tblr chngs, dnse brtll ten,	100% SS: med - med dtk gry, occ sl brn, gy-whi ip, fti, dom v fn - fn w/ occ med grns, subang - md, mod sphrcly, fr - w strd, gm suprd, no mtrx, ~10% vis por, pnt - lng cnct, tr SH: dtk gry-blk ip, dli-rthy lstr, slty txt, tblr chngs, dnse brtll ten,	mod fst sl brl blu strng cut, thk sl blu ring	6500	MD: 10,882' TVD: 6,508.45' Inclination: 88.86° Azimuth: 180.07° VS: 5.551.78'	6500	MD: 10,968' TVD: 6,509.69' Inclination: 89.48° Azimuth: 180.4° VS: 5.637.71'	6500	100% SS: med - med dtk gry, occ sl brn, gy-whi ip, fti, dom v fn - fn w/ occ med grns, subang - md, mod sphrcly, fr - w strd, gm suprd, no mtrx, ~10% vis por, pnt - lng cnct, com SH: dtk gry-blk ip, dli-rthy lstr, slty txt, tblr chngs, dnse brtll ten,	100% SS: med - med dtk gry, occ sl brn, gy-whi ip, fti, dom v fn - fn w/ occ med grns, subang - md, mod sphrcly, fr - w strd, gm suprd, no mtrx, ~10% vis por, pnt - lng cnct, com SH: dtk gry-blk ip, dli-rthy lstr, slty txt, tblr chngs, dnse brtll ten,	mod fst sl brl blu strng cut, thk sl blu ring	6500	MD: 10,968' TVD: 6,509.69' Inclination: 89.48° Azimuth: 180.4° VS: 5.637.71'	6500	100% SS: med - med dtk gry, occ sl brn, gy-whi ip, fti, dom v fn - fn w/ occ med grns, subang - md, mod sphrcly, fr - w strd, gm suprd, no mtrx, ~10% vis por, pnt - lng cnct, com SH: dtk gry-blk ip, dli-rthy lstr, slty txt, tblr chngs, dnse brtll ten,	100% SS: med - med dtk gry, occ sl brn, gy-whi ip, fti, dom v fn - fn w/ occ med grns, subang - md, mod sphrcly, fr - w strd, gm suprd, no mtrx, ~10% vis por, pnt - lng cnct, com SH: dtk gry-blk ip, dli-rthy lstr, slty txt, tblr chngs, dnse brtll ten,	mod fst sl brl blu strng cut, thk sl blu ring	6500
--	--	---	------	---	------	--	------	---	---	---	------	--	------	---	---	---	------



11,050'	VD: 6,509.92'	MD: 11,055'	6500	100% SS: med - med dk gry, occ sl brn, gy-whi ip, fri, dom v fn - fn w/ occ med grns, subang - rnd, mod sphricy, fr - w strd, gm suprd, no mtrx, ~10% vis por, pnt - lng cnct. rr SH: dk gry-blk ip, dil-rthy lst, sily txt, tbr chngs, dnse brittle ten.	mod fst sl bri blu strng cut, thick sl blu ring
11,060'					
11,070'					
11,080'					
11,090'					
11,100'					
11,110'					
11,120'					
11,130'					
11,140'					
11,150'					
11,160'					
11,170'					
11,180'					
11,190'					
11,200'					
11,210'					
11,220'					
11,230'					
11,240'					
11,250'					
11,260'					

