

BONANZA CREEK OIL COMPANY

Location: COLORADO Slot: SLOT#03 NORTH PLATTE K21-O24-34HNC (1170'FSL & 2482'FWL, SEC.27)
Field: WELD COUNTY Well: NORTH PLATTE K21-O24-34HNC
Facility: SEC.27-T05N-R63W Wellbore: NORTH PLATTE K21-O24-34HNC PWB

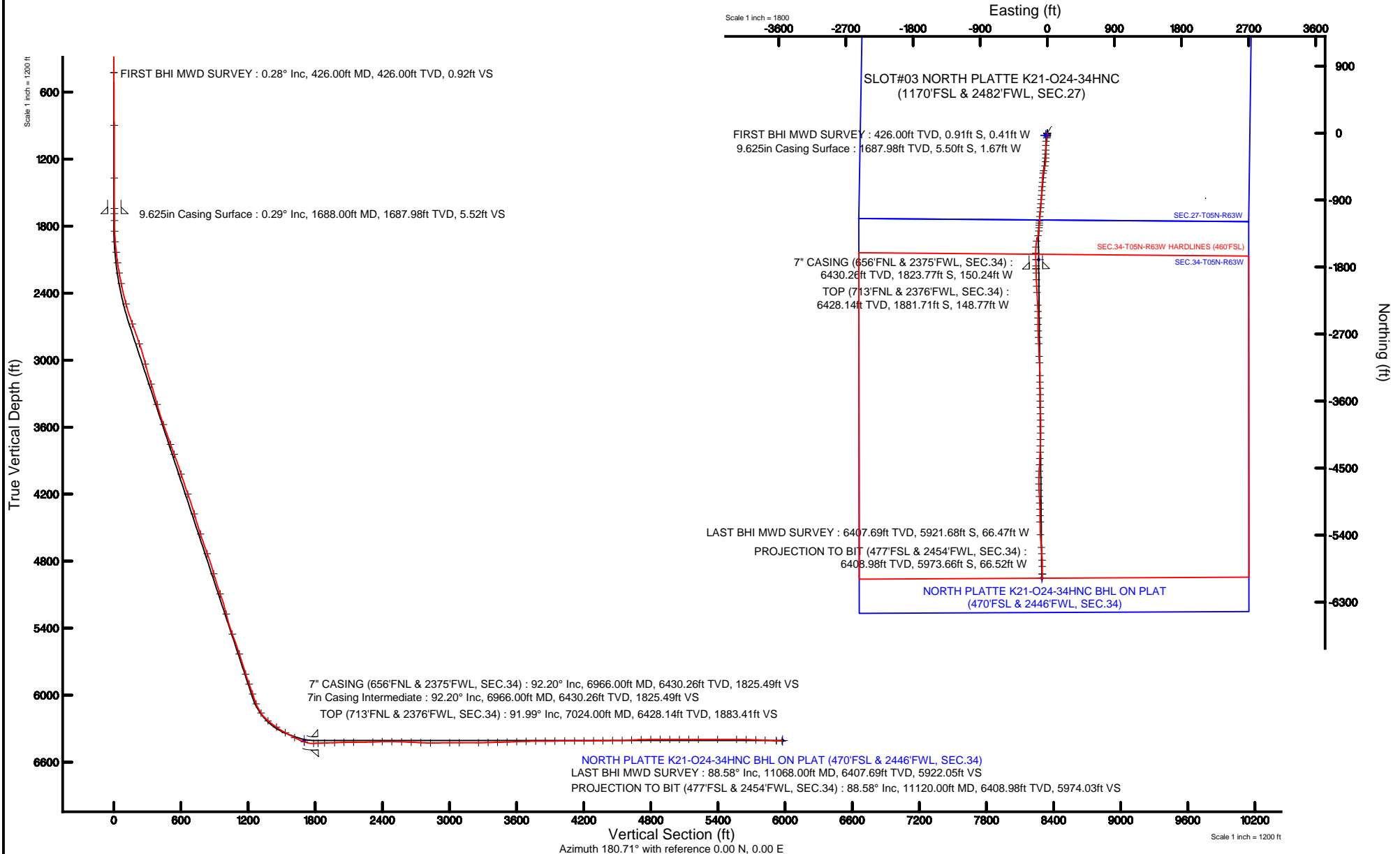
Plot reference wellpath is NORTH PLATTE K21-O24-34HNC PWP (REV-B.0)

True vertical depths are referenced to XTREME 22 (17KB) (RKB)	Grid System: NAD83 / Lambert Colorado SP, Northern Zone (501), US feet
Measured depths are referenced to XTREME 22 (17KB) (RKB)	North Reference: True north
XTREME 22 (17KB) (RKB) to Mean Sea Level: 4558 feet	Scale: True distance
Mean Sea Level to Mud line (At Slot: SLOT#03 NORTH PLATTE K21-O24-34HNC (1170'FSL & 2482'FWL, SEC.27)): 0 feet	Depths are in feet
Coordinates are in feet referenced to Slot	Created by: ingmjarr on 11/12/2015



BGGM (1945.0 to 2017.0) Dip: 67.00° Field: 52641.2 nT
Magnetic North is 8.35 degrees East of True North (at 8/17/2015)

To correct azimuth from Magnetic to True add 8.35 degrees





Actual Wellpath Report

NORTH PLATTE K21-O24-34HNC AWP

Page 1 of 5



REFERENCE WELLPATH IDENTIFICATION

Operator	BONANZA CREEK OIL COMPANY	Slot	SLOT#03 NORTH PLATTE K21-O24-34HNC (1170'FSL & 2482'FWL, SEC.27)
Area	COLORADO	Well	NORTH PLATTE K21-O24-34HNC
Field	WELD COUNTY	Wellbore	NORTH PLATTE K21-O24-34HNC AWP
Facility	SEC.27-T05N-R63W		

REPORT SETUP INFORMATION

Projection System	NAD83 / Lambert Colorado SP, Northern Zone (501), US feet	Software System	WellArchitect® 4.1.1
North Reference	True	User	Ingmjmr
Scale	0.999959	Report Generated	11/12/2015 at 2:28:35 PM
Convergence at slot	0.70° East	Database/Source file	WA_DEN_Denver_Defn/NORTH_PLATTE_K21-O24-34HNC_AWP.xml

WELLPATH LOCATION

	Local coordinates		Grid coordinates		Geographic coordinates	
	North[ft]	East[ft]	Easting[US ft]	Northing[US ft]	Latitude	Longitude
Slot Location	32.46	20.73	3300273.57	1378155.25	40°21'59.145"N	104°25'20.516"W
Facility Reference Pt			3300253.24	1378122.53	40°21'58.824"N	104°25'20.784"W
Field Reference Pt			3335925.10	1457282.25	40°34'56.460"N	104°17'26.016"W

WELLPATH DATUM

Calculation method	Minimum curvature	XTREME 22 (17'KB) (RKB) to Facility Vertical Datum	4558.00ft
Horizontal Reference Pt	Slot	XTREME 22 (17'KB) (RKB) to Mean Sea Level	4558.00ft
Vertical Reference Pt	XTREME 22 (17'KB) (RKB)	XTREME 22 (17'KB) (RKB) to Mud Line at Slot (SLOT#03 NORTH PLATTE K21-O24-34HNC (1170'FSL & 2482'FWL, SEC.27))	4558.00ft
MD Reference Pt	XTREME 22 (17'KB) (RKB)	Section Origin	N 0.00, E 0.00 ft
Field Vertical Reference	Mean Sea Level	Section Azimuth	180.71°



Actual Wellpath Report

NORTH PLATTE K21-O24-34HNC AWP

Page 2 of 5



REFERENCE WELLPATH IDENTIFICATION

Operator	BONANZA CREEK OIL COMPANY	Slot	SLOT#03 NORTH PLATTE K21-O24-34HNC (1170'FSL & 2482'FWL, SEC.27)
Area	COLORADO	Well	NORTH PLATTE K21-O24-34HNC
Field	WELD COUNTY	Wellbore	NORTH PLATTE K21-O24-34HNC AWP
Facility	SEC.27-T05N-R63W		

WELLPATH DATA (88 stations) † = interpolated/extrapolated station

MD [ft]	Inclination [°]	Azimuth [°]	TVD [ft]	Vert Sect [ft]	North [ft]	East [ft]	DLS [°/100ft]	Comments
0.00†	0.000	203.960	0.00	0.00	0.00	0.00	0.00	
17.00	0.000	203.960	17.00	0.00	0.00	0.00	0.00	
426.00	0.280	203.960	426.00	0.92	-0.91	-0.41	0.07	FIRST BHI MWD SURVEY
897.00	0.370	189.780	896.99	3.48	-3.46	-1.13	0.03	
1370.00	0.170	338.540	1369.99	4.34	-4.32	-1.65	0.11	
1641.00	0.520	174.860	1640.99	5.19	-5.17	-1.68	0.25	
1751.00	0.100	277.410	1750.98	5.67	-5.65	-1.74	0.50	
1846.00	2.320	151.810	1845.96	7.35	-7.34	-0.91	2.50	
1940.00	4.600	174.480	1939.78	12.76	-12.77	0.35	2.78	
2034.00	6.260	181.080	2033.36	21.63	-21.64	0.62	1.88	
2129.00	8.110	186.550	2127.61	33.48	-33.48	-0.24	2.07	
2223.00	10.170	188.900	2220.41	48.29	-48.27	-2.28	2.23	
2318.00	11.860	197.930	2313.67	65.92	-65.84	-6.59	2.54	
2506.00	15.360	187.690	2496.39	109.11	-108.92	-15.87	2.25	
2694.00	20.000	181.080	2675.48	166.01	-165.77	-19.81	2.69	
2883.00	18.630	180.880	2853.83	228.52	-228.28	-20.88	0.73	
3072.00	14.620	176.660	3034.90	282.52	-282.30	-19.96	2.21	
3260.00	17.360	183.000	3215.62	334.23	-334.01	-20.04	1.73	
3448.00	15.210	182.740	3396.07	386.91	-386.66	-22.69	1.14	
3638.00	20.540	194.950	3576.90	444.18	-443.82	-32.49	3.42	
3827.00	19.670	195.270	3754.38	507.11	-506.54	-49.42	0.46	
3921.00	20.900	188.100	3842.56	539.05	-538.40	-55.95	2.95	
4110.00	17.980	183.810	4020.78	601.63	-600.90	-62.64	1.72	
4298.00	19.180	181.280	4198.98	661.49	-660.73	-65.26	0.77	
4486.00	16.910	189.060	4377.74	719.44	-718.62	-70.26	1.76	
4674.00	17.610	177.710	4557.33	774.90	-774.06	-73.43	1.83	
4861.00	20.340	186.140	4734.18	835.53	-834.66	-75.77	2.07	
5049.00	15.440	183.530	4913.04	893.09	-892.16	-80.81	2.64	
5238.00	20.270	186.460	5092.89	950.82	-949.84	-86.05	2.60	
5426.00	13.170	179.310	5272.85	1004.71	-1003.68	-89.46	3.93	
5615.00	20.860	188.460	5453.47	1059.67	-1058.59	-94.16	4.30	
5803.00	17.960	182.920	5630.78	1121.82	-1120.66	-100.56	1.83	
5992.00	17.480	182.830	5810.81	1179.30	-1178.12	-103.45	0.25	
6087.00	19.990	185.270	5900.77	1209.75	-1208.54	-105.64	2.77	
6181.00	18.420	183.390	5989.54	1240.61	-1239.37	-108.00	1.79	
6275.00	21.470	183.550	6077.89	1272.63	-1271.37	-109.94	3.25	
6369.00	34.610	184.930	6160.68	1316.63	-1315.33	-113.32	13.99	
6463.00	50.590	194.440	6229.72	1378.99	-1377.56	-124.75	18.29	
6558.00	56.330	191.860	6286.26	1453.50	-1451.86	-142.04	6.42	
6652.00	60.670	183.540	6335.43	1532.94	-1531.17	-152.63	8.84	
6746.00	61.960	180.310	6380.55	1615.37	-1613.57	-155.39	3.31	
6841.00	70.340	177.430	6418.94	1702.12	-1700.35	-153.60	9.25	
6927.00	92.340	179.000	6431.81	1786.54	-1784.81	-151.01	25.64	
6966.00†	92.200	178.739	6430.26	1825.49	-1823.77	-150.24	0.76	7" CASING (656'FNL & 2375'FWL, SEC.34)
7024.00†	91.993	178.351	6428.14	1883.41	-1881.71	-148.77	0.76	TOP (713'FNL & 2376'FWL, SEC.34)



Actual Wellpath Report

NORTH PLATTE K21-O24-34HNC AWP

Page 3 of 5



REFERENCE WELLPATH IDENTIFICATION

Operator	BONANZA CREEK OIL COMPANY	Slot	SLOT#03 NORTH PLATTE K21-O24-34HNC (1170'FSL & 2482'FWL, SEC.27)
Area	COLORADO	Well	NORTH PLATTE K21-O24-34HNC
Field	WELD COUNTY	Wellbore	NORTH PLATTE K21-O24-34HNC AWP
Facility	SEC.27-T05N-R63W		

WELLPATH DATA (88 stations)

MD [ft]	Inclination [°]	Azimuth [°]	TVD [ft]	Vert Sect [ft]	North [ft]	East [ft]	DLS [°/100ft]	Comments
7114.00	91.670	177.750	6425.27	1973.26	-1971.62	-145.71	0.76	
7199.00	91.830	177.170	6422.67	2058.09	-2056.49	-141.94	0.71	
7285.00	89.410	177.100	6421.74	2143.91	-2142.37	-137.64	2.82	
7456.00	92.220	176.680	6419.31	2314.49	-2313.09	-128.37	1.66	
7541.00	91.540	177.810	6416.52	2399.29	-2397.94	-124.29	1.55	
7627.00	88.950	180.590	6416.15	2485.24	-2483.92	-123.08	4.42	
7714.00	88.500	181.100	6418.09	2572.22	-2570.88	-124.37	0.78	
7801.00	87.530	177.660	6421.10	2659.13	-2657.81	-123.43	4.11	
7887.00	86.980	177.070	6425.22	2744.89	-2743.62	-119.48	0.94	
7972.00	90.000	177.590	6427.46	2829.70	-2828.49	-115.52	3.61	
8144.00	90.870	177.990	6426.15	3001.47	-3000.36	-108.89	0.56	
8231.00	90.240	176.460	6425.31	3088.30	-3087.25	-104.68	1.90	
8402.00	89.690	179.000	6425.42	3259.06	-3258.10	-97.90	1.52	
8488.00	91.380	179.970	6424.61	3345.03	-3344.09	-97.13	2.27	
8573.00	91.570	178.990	6422.42	3429.98	-3429.05	-96.36	1.17	
8658.00	91.590	179.000	6420.08	3514.91	-3514.01	-94.87	0.03	
8744.00	93.010	179.180	6416.63	3600.81	-3599.93	-93.51	1.66	
8829.00	91.140	179.380	6413.55	3685.72	-3684.86	-92.44	2.21	
8915.00	90.860	178.610	6412.05	3771.67	-3770.83	-90.93	0.95	
9000.00	90.180	178.970	6411.28	3856.62	-3855.81	-89.13	0.91	
9086.00	90.250	180.010	6410.96	3942.59	-3941.80	-88.37	1.21	
9173.00	90.280	180.630	6410.56	4029.59	-4028.80	-88.86	0.71	
9261.00	90.250	181.330	6410.15	4117.59	-4116.79	-90.36	0.80	
9346.00	90.370	181.830	6409.69	4202.58	-4201.75	-92.70	0.60	
9431.00	90.340	182.520	6409.16	4287.55	-4286.69	-95.93	0.81	
9516.00	91.020	182.330	6408.15	4372.50	-4371.61	-99.53	0.83	
9601.00	90.680	183.260	6406.89	4457.44	-4456.50	-103.67	1.16	
9687.00	91.260	182.740	6405.44	4543.35	-4542.37	-108.17	0.91	
9772.00	93.870	181.580	6401.63	4628.23	-4627.21	-111.37	3.36	
9857.00	91.260	178.620	6397.83	4713.13	-4712.11	-111.52	4.64	
9943.00	90.550	178.160	6396.47	4799.04	-4798.06	-109.10	0.98	
10028.00	90.280	177.120	6395.85	4883.92	-4882.99	-105.60	1.26	
10114.00	90.310	176.680	6395.41	4969.73	-4968.86	-100.95	0.51	
10199.00	89.630	178.750	6395.46	5054.61	-5053.79	-97.56	2.56	
10284.00	89.820	179.940	6395.86	5139.58	-5138.78	-96.59	1.42	
10370.00	89.810	179.470	6396.14	5225.57	-5224.78	-96.15	0.55	
10541.00	90.030	177.330	6396.38	5396.42	-5395.70	-91.37	1.26	
10712.00	90.150	174.960	6396.11	5566.86	-5566.30	-79.88	1.39	
10797.00	88.180	176.290	6397.35	5651.51	-5651.04	-73.39	2.80	
10883.00	87.910	177.520	6400.28	5737.27	-5736.86	-68.75	1.46	
10968.00	87.140	179.690	6403.95	5822.13	-5821.75	-66.69	2.71	
11068.00	88.580	180.060	6407.69	5922.05	-5921.68	-66.47	1.49	LAST BHI MWD SURVEY
11120.00	88.580	180.060	6408.98	5974.03	-5973.66	-66.52	0.00	PROJECTION TO BIT (477'FSL & 2454'FWL, SEC.34)



Actual Wellpath Report

NORTH PLATTE K21-O24-34HNC AWP

Page 4 of 5



REFERENCE WELLPATH IDENTIFICATION

Operator	BONANZA CREEK OIL COMPANY	Slot	SLOT#03 NORTH PLATTE K21-O24-34HNC (1170'FSL & 2482'FWL, SEC.27)
Area	COLORADO	Well	NORTH PLATTE K21-O24-34HNC
Field	WELD COUNTY	Wellbore	NORTH PLATTE K21-O24-34HNC AWB
Facility	SEC.27-T05N-R63W		

HOLE & CASING SECTIONS -

Ref Wellbore: NORTH PLATTE K21-O24-34HNC AWB Ref Wellpath: NORTH PLATTE K21-O24-34HNC AWP

String/Diameter	Start MD [ft]	End MD [ft]	Interval [ft]	Start TVD [ft]	End TVD [ft]	Start N/S [ft]	Start E/W [ft]	End N/S [ft]	End E/W [ft]
13.5in Open Hole	17.00	1698.00	1681.00	17.00	1697.98	0.00	0.00	-5.54	-1.68
9.625in Casing Surface	17.00	1688.00	1671.00	17.00	1687.98	0.00	0.00	-5.50	-1.67
8.75in Open Hole	1698.00	6976.00	5278.00	1697.98	6429.88	-5.54	-1.68	-1833.76	-150.01
7in Casing Intermediate	17.00	6966.00	6949.00	17.00	6430.26	0.00	0.00	-1823.77	-150.24
6.125in Open Hole	6976.00	11120.00	4144.00	6429.88	6408.98	-1833.76	-150.01	-5973.66	-66.52

TARGETS

Name	TVD [ft]	North [ft]	East [ft]	Grid East [US ft]	Grid North [US ft]	Latitude	Longitude	Shape
SEC.27-T05N-R63W	0.00	-32.46	-20.73	3300253.24	1378122.53	40°21'58.824"N	104°25'20.784"W	polygon
SEC.34-T05N-R63W	0.00	-32.46	-20.73	3300253.24	1378122.53	40°21'58.824"N	104°25'20.784"W	polygon
SEC.34-T05N-R63W HARDLINES (460'FSL)	6327.00	-32.46	-20.73	3300253.24	1378122.53	40°21'58.824"N	104°25'20.784"W	polygon
NORTH PLATTE K21-O24-34HNC BHL ON PLAT (470'FSL & 2446'FWL, SEC.34)	6406.00	-5977.99	-73.69	3300272.53	1372177.06	40°21'00.072"N	104°25'21.468"W	point
NORTH PLATTE K21-O24-34HNC EP ON PLAT	6406.00	-1701.00	-115.48	3300178.77	1376453.04	40°21'42.336"N	104°25'22.008"W	point

WELLPATH COMPOSITION -

Ref Wellbore: NORTH PLATTE K21-O24-34HNC AWB Ref Wellpath: NORTH PLATTE K21-O24-34HNC AWP

Start MD [ft]	End MD [ft]	Positional Uncertainty Model	Log Name/Comment	Wellbore
17.00	1641.00	NaviTrak (MagCorr)	BHI MWD/NAVITRAK (MAGCORR) 13.5" HOLE <426-1641>	NORTH PLATTE K21-O24-34HNC AWB
1641.00	6927.00	NaviTrak (MagCorr)	BHI MWD/NAVITRAK (MAGCORR) 8.75" HOLE <1751-6927>	NORTH PLATTE K21-O24-34HNC AWB
6927.00	11068.00	NaviTrak (MagCorr)	BHI MWD/NAVITRAK (MAGCORR) 6.125" HOLE <7114-11068>	NORTH PLATTE K21-O24-34HNC AWB
11068.00	11120.00	Blind Drilling (std)	Projection to bit	NORTH PLATTE K21-O24-34HNC AWB



Actual Wellpath Report

NORTH PLATTE K21-O24-34HNC AWP

Page 5 of 5



REFERENCE WELLPATH IDENTIFICATION

Operator	BONANZA CREEK OIL COMPANY	Slot	SLOT#03 NORTH PLATTE K21-O24-34HNC (1170'FSL & 2482'FWL, SEC.27)
Area	COLORADO	Well	NORTH PLATTE K21-O24-34HNC
Field	WELD COUNTY	Wellbore	NORTH PLATTE K21-O24-34HNC AWB
Facility	SEC.27-T05N-R63W		

WELLPATH COMMENTS

MD [ft]	Inclination [°]	Azimuth [°]	TVD [ft]	Comment
426.00	0.280	203.960	426.00	FIRST BHI MWD SURVEY
6966.00	92.200	178.739	6430.26	7" CASING (656'FNL & 2375'FWL, SEC.34)
7024.00	91.993	178.351	6428.14	TOP (713'FNL & 2376'FWL, SEC.34)
11068.00	88.580	180.060	6407.69	LAST BHI MWD SURVEY
11120.00	88.580	180.060	6408.98	PROJECTION TO BIT (477'FSL & 2454'FWL, SEC.34)