

# BONANZA CREEK OIL COMPANY

Location: COLORADO Slot: SLOT#04 NORTH PLATTE K31-O34-34HNB (1187'FSL & 2492'FWL, SEC.27)  
Field: WELD COUNTY Well: NORTH PLATTE K31-O34-34HNB  
Facility: SEC.27-T05N-R63W Wellbore: NORTH PLATTE K31-O34-34HNB PWB

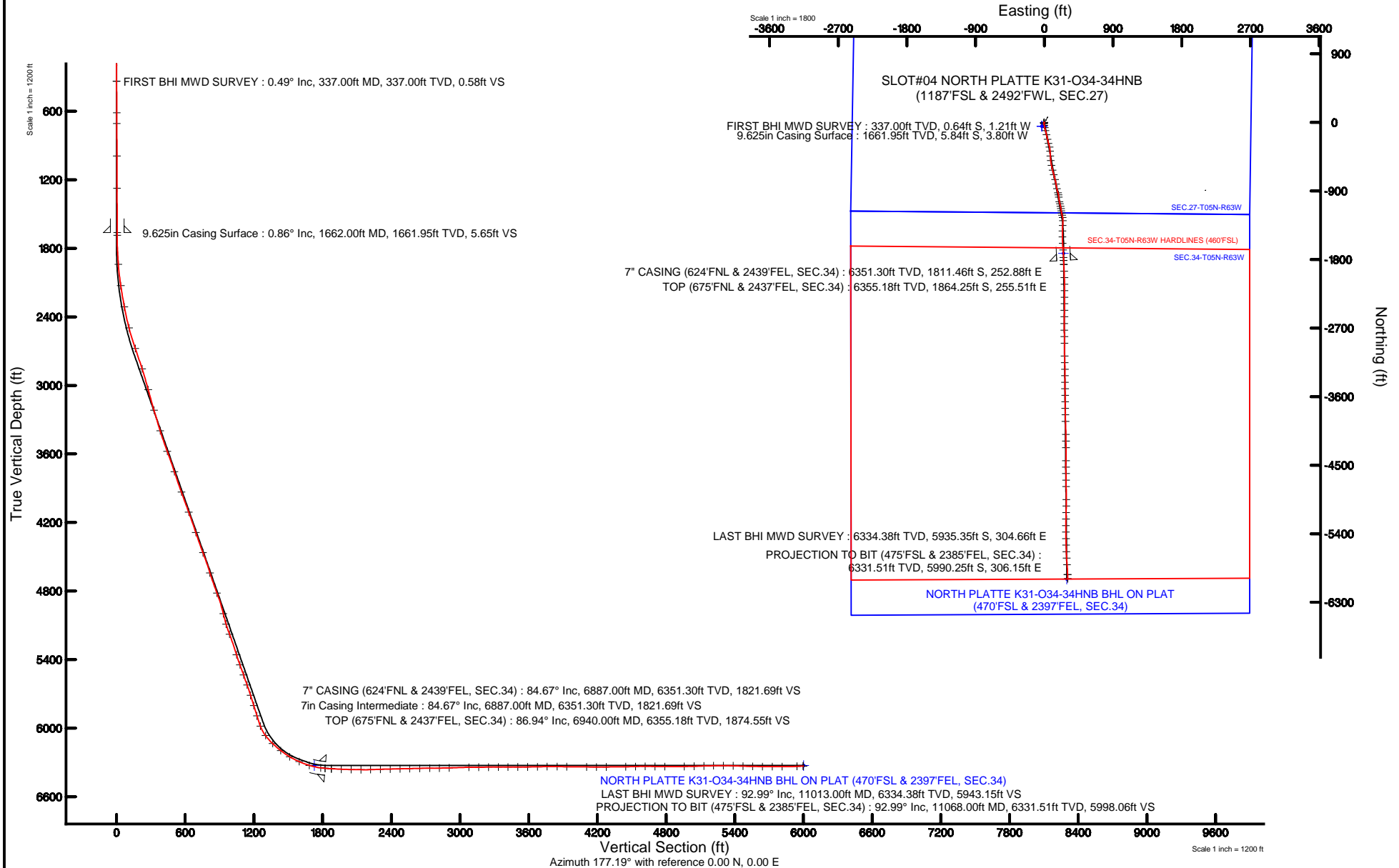
Plot reference wellpath is NORTH PLATTE K31-O34-34HNB PWP (REV-B.0)

True vertical depths are referenced to XTREME 22 (17KB) (RKB)	Grid System: NAD83 / Lambert Colorado SP, Northern Zone (501), US feet
Measured depths are referenced to XTREME 22 (17KB) (RKB)	North Reference: True north
XTREME 22 (17KB) (RKB) to Mean Sea Level: 4558 feet	Scale: True distance
Mean Sea Level to Mud line (At Slot: SLOT#04 NORTH PLATTE K31-O34-34HNB (1187'FSL & 2492'FWL, SEC.27)): 0 feet	Depths are in feet
Coordinates are in feet referenced to Slot	Created by: ingnjamr on 11/12/2015



BGGM (1945.0 to 2017.0) Dip: 67.00° Field: 52641.2 nT  
Magnetic North is 8.35 degrees East of True North (at 8/17/2015)

To correct azimuth from Magnetic to True add 8.35 degrees





# Actual Wellpath Report

NORTH PLATTE K31-O34-34HNB AWP

Page 1 of 5



## REFERENCE WELLPATH IDENTIFICATION

Operator	BONANZA CREEK OIL COMPANY	Slot	SLOT#04 NORTH PLATTE K31-O34-34HNB (1187'FSL & 2492'FWL, SEC.27)
Area	COLORADO	Well	NORTH PLATTE K31-O34-34HNB
Field	WELD COUNTY	Wellbore	NORTH PLATTE K31-O34-34HNB AWB
Facility	SEC.27-T05N-R63W		

## REPORT SETUP INFORMATION

Projection System	NAD83 / Lambert Colorado SP, Northern Zone (501), US feet	Software System	WellArchitect® 4.1.1
North Reference	True	User	Ingmjmr
Scale	0.999959	Report Generated	11/12/2015 at 2:55:52 PM
Convergence at slot	0.70° East	Database/Source file	WA_DEN_Denver_Defn/NORTH_PLATTE_K31-O34-34HNB_AWB.xml

## WELLPATH LOCATION

	Local coordinates		Grid coordinates		Geographic coordinates	
	North[ft]	East[ft]	Easting[US ft]	Northing[US ft]	Latitude	Longitude
Slot Location	49.40	31.38	3300284.01	1378172.31	40°21'59.312"N	104°25'20.379"W
Facility Reference Pt			3300253.24	1378122.53	40°21'58.824"N	104°25'20.784"W
Field Reference Pt			3335925.10	1457282.25	40°34'56.460"N	104°17'26.016"W

## WELLPATH DATUM

Calculation method	Minimum curvature	XTREME 22 (17'KB) (RKB) to Facility Vertical Datum	4558.00ft
Horizontal Reference Pt	Slot	XTREME 22 (17'KB) (RKB) to Mean Sea Level	4558.00ft
Vertical Reference Pt	XTREME 22 (17'KB) (RKB)	XTREME 22 (17'KB) (RKB) to Mud Line at Slot (SLOT#04 NORTH PLATTE K31-O34-34HNB (1187'FSL & 2492'FWL, SEC.27))	4558.00ft
MD Reference Pt	XTREME 22 (17'KB) (RKB)	Section Origin	N 0.00, E 0.00 ft
Field Vertical Reference	Mean Sea Level	Section Azimuth	177.19°



# Actual Wellpath Report

NORTH PLATTE K31-O34-34HNB AWP

Page 2 of 5



## REFERENCE WELLPATH IDENTIFICATION

Operator	BONANZA CREEK OIL COMPANY	Slot	SLOT#04 NORTH PLATTE K31-O34-34HNB (1187'FSL & 2492'FWL, SEC.27)
Area	COLORADO	Well	NORTH PLATTE K31-O34-34HNB
Field	WELD COUNTY	Wellbore	NORTH PLATTE K31-O34-34HNB AWB
Facility	SEC.27-T05N-R63W		

## WELLPATH DATA (90 stations) † = interpolated/extrapolated station

MD [ft]	Inclination [°]	Azimuth [°]	TVD [ft]	Vert Sect [ft]	North [ft]	East [ft]	DLS [°/100ft]	Comments
0.00†	0.000	242.170	0.00	0.00	0.00	0.00	0.00	
17.00	0.000	242.170	17.00	0.00	0.00	0.00	0.00	
337.00	0.490	242.170	337.00	0.58	-0.64	-1.21	0.15	FIRST BHI MWD SURVEY
615.00	0.910	238.390	614.97	2.14	-2.35	-4.14	0.15	
709.00	0.280	123.470	708.97	2.64	-2.87	-4.59	1.13	
992.00	0.320	99.750	991.97	3.22	-3.38	-3.23	0.05	
1275.00	0.430	142.320	1274.96	4.26	-4.36	-1.80	0.10	
1687.00	0.930	264.850	1686.94	5.67	-5.88	-4.19	0.30	
1940.00	4.410	171.830	1939.69	15.44	-15.70	-4.85	1.80	
2129.00	8.780	167.910	2127.39	36.92	-37.01	-0.79	2.32	
2318.00	10.620	169.140	2313.68	68.41	-68.22	5.51	0.98	
2506.00	14.680	164.870	2497.08	108.85	-108.25	14.99	2.21	
2694.00	19.580	167.320	2676.69	163.19	-162.01	28.14	2.63	
2883.00	18.080	166.690	2855.57	223.24	-221.45	41.84	0.80	
3072.00	15.250	164.730	3036.62	276.35	-273.98	55.14	1.53	
3260.00	16.530	167.510	3217.43	326.86	-323.94	67.44	0.79	
3448.00	17.280	177.430	3397.34	381.16	-377.96	74.47	1.58	
3638.00	20.450	174.960	3577.12	442.57	-439.23	78.66	1.72	
3827.00	18.140	175.850	3755.49	504.98	-501.48	83.69	1.23	
4016.00	20.150	167.090	3934.06	566.46	-562.57	93.09	1.85	
4203.00	20.340	166.430	4109.51	630.10	-625.56	107.91	0.16	
4392.00	18.750	164.360	4287.62	691.99	-686.74	123.81	0.92	
4580.00	21.000	165.760	4464.41	754.48	-748.50	140.25	1.22	
4767.00	17.740	171.670	4640.82	815.71	-809.19	152.62	2.03	
4955.00	20.850	167.360	4818.25	877.20	-870.19	164.09	1.82	
5143.00	13.990	162.130	4997.53	932.18	-924.53	178.41	3.74	
5238.00	16.940	168.780	5089.08	956.97	-949.05	184.63	3.62	
5332.00	20.520	175.930	5178.10	987.00	-978.93	188.46	4.52	
5521.00	17.180	167.510	5356.97	1047.66	-1039.25	196.85	2.28	
5615.00	20.560	166.960	5445.91	1077.60	-1068.89	203.58	3.60	
5709.00	19.750	165.390	5534.15	1109.39	-1100.34	211.31	1.04	
5803.00	19.330	172.910	5622.75	1140.46	-1131.15	217.24	2.71	
5898.00	17.570	171.120	5712.87	1170.40	-1160.93	221.39	1.95	
5992.00	18.000	169.440	5802.38	1198.90	-1189.22	226.25	0.71	
6087.00	16.810	166.500	5893.03	1226.94	-1217.01	232.14	1.56	
6181.00	20.820	163.120	5981.99	1256.51	-1246.23	240.17	4.42	
6275.00	36.860	182.270	6064.23	1301.18	-1290.76	243.94	19.50	
6369.00	46.590	185.730	6134.31	1363.19	-1353.06	239.40	10.63	
6463.00	51.700	179.910	6195.81	1433.88	-1424.00	236.04	7.17	
6558.00	58.780	179.460	6249.94	1511.80	-1502.00	236.49	7.46	
6652.00	66.660	176.000	6293.00	1595.26	-1585.39	239.88	9.00	
6746.00	72.670	177.360	6325.65	1683.35	-1673.34	244.96	6.54	
6848.00	83.000	176.250	6347.12	1782.92	-1772.76	250.53	10.18	
6887.00†	84.671	176.790	6351.30	1821.69	-1811.46	252.88	4.50	7" CASING (624'FNL & 2439'FEL, SEC.34)
6940.00†	86.941	177.519	6355.18	1874.55	-1864.25	255.51	4.50	TOP (675'FNL & 2437'FEL, SEC.34)



# Actual Wellpath Report

NORTH PLATTE K31-O34-34HNB AWP

Page 3 of 5



## REFERENCE WELLPATH IDENTIFICATION

Operator	BONANZA CREEK OIL COMPANY	Slot	SLOT#04 NORTH PLATTE K31-O34-34HNB (1187'FSL & 2492'FWL, SEC.27)
Area	COLORADO	Well	NORTH PLATTE K31-O34-34HNB
Field	WELD COUNTY	Wellbore	NORTH PLATTE K31-O34-34HNB AWP
Facility	SEC.27-T05N-R63W		

## WELLPATH DATA (90 stations)

MD [ft]	Inclination [°]	Azimuth [°]	TVD [ft]	Vert Sect [ft]	North [ft]	East [ft]	DLS [°/100ft]	Comments
6943.00	87.070	177.560	6355.34	1877.54	-1867.24	255.64	4.50	
7028.00	87.570	177.680	6359.31	1962.45	-1952.08	259.16	0.60	
7114.00	89.260	178.520	6361.69	2048.40	-2037.99	262.01	2.19	
7200.00	88.680	179.430	6363.23	2134.34	-2123.97	263.55	1.25	
7285.00	91.630	180.350	6363.00	2219.24	-2208.95	263.71	3.64	
7371.00	92.340	180.080	6360.03	2305.07	-2294.90	263.39	0.88	
7456.00	91.010	180.320	6357.54	2389.91	-2379.86	263.09	1.59	
7542.00	91.600	180.320	6355.58	2475.76	-2465.84	262.61	0.69	
7627.00	90.860	180.190	6353.76	2560.62	-2550.82	262.24	0.88	
7715.00	91.840	180.440	6351.69	2648.46	-2638.79	261.75	1.15	
7802.00	90.150	179.300	6350.17	2735.35	-2725.77	261.95	2.34	
7887.00	90.700	179.900	6349.54	2820.27	-2810.77	262.54	0.96	
7973.00	91.950	179.650	6347.56	2906.16	-2896.74	262.88	1.48	
8144.00	91.320	178.780	6342.68	3076.98	-3067.65	265.22	0.63	
8231.00	90.030	178.270	6341.65	3163.94	-3154.62	267.46	1.59	
8316.00	90.680	178.510	6341.12	3248.92	-3239.58	269.85	0.82	
8402.00	90.030	180.040	6340.59	3334.86	-3325.57	270.94	1.93	
8487.00	90.670	180.230	6340.07	3419.75	-3410.57	270.74	0.79	
8573.00	90.000	179.430	6339.57	3505.65	-3496.56	270.99	1.21	
8658.00	90.210	179.230	6339.41	3590.59	-3581.56	271.99	0.34	
8744.00	91.190	179.790	6338.36	3676.51	-3667.55	272.72	1.31	
8829.00	91.010	179.010	6336.73	3761.44	-3752.53	273.61	0.94	
8915.00	89.130	178.700	6336.63	3847.39	-3838.51	275.33	2.22	
9000.00	89.560	178.270	6337.60	3932.37	-3923.47	277.58	0.72	
9173.00	89.380	178.910	6339.20	4105.31	-4096.41	281.84	0.38	
9260.00	89.560	179.470	6340.00	4192.25	-4183.40	283.07	0.68	
9346.00	90.980	179.560	6339.60	4278.17	-4269.39	283.79	1.65	
9516.00	90.370	180.610	6337.60	4447.94	-4439.37	283.54	0.71	
9601.00	91.600	179.890	6336.13	4532.81	-4524.36	283.17	1.68	
9686.00	90.430	179.790	6334.63	4617.70	-4609.34	283.41	1.38	
9772.00	88.480	179.220	6335.45	4703.62	-4695.33	284.15	2.36	
9857.00	89.440	178.620	6336.99	4788.57	-4780.30	285.75	1.33	
10028.00	91.500	180.310	6335.59	4959.41	-4951.27	287.35	1.56	
10113.00	91.140	180.430	6333.63	5044.26	-5036.25	286.80	0.45	
10199.00	92.010	181.130	6331.26	5130.05	-5122.21	285.63	1.30	
10284.00	91.350	181.630	6328.77	5214.79	-5207.15	283.58	0.97	
10370.00	90.030	181.370	6327.74	5300.54	-5293.11	281.33	1.56	
10455.00	87.500	178.950	6329.57	5385.39	-5378.07	281.09	4.12	
10541.00	88.180	178.470	6332.81	5471.30	-5463.99	283.03	0.97	
10626.00	89.140	178.180	6334.80	5556.26	-5548.93	285.51	1.18	
10711.00	89.540	178.230	6335.78	5641.24	-5633.88	288.18	0.47	
10797.00	89.720	176.640	6336.33	5727.23	-5719.79	292.02	1.86	
10883.00	89.350	175.560	6337.03	5813.21	-5805.59	297.87	1.33	
11013.00	92.990	178.450	6334.38	5943.15	-5935.35	304.66	3.57	LAST BHI MWD SURVEY
11068.00	92.990	178.450	6331.51	5998.06	-5990.25	306.15	0.00	PROJECTION TO BIT (475'FSL & 2385'FEL, SEC.34)



# Actual Wellpath Report

NORTH PLATTE K31-O34-34HNB AWP

Page 4 of 5



## REFERENCE WELLPATH IDENTIFICATION

Operator	BONANZA CREEK OIL COMPANY	Slot	SLOT#04 NORTH PLATTE K31-O34-34HNB (1187'FSL & 2492'FWL, SEC.27)
Area	COLORADO	Well	NORTH PLATTE K31-O34-34HNB
Field	WELD COUNTY	Wellbore	NORTH PLATTE K31-O34-34HNB AWB
Facility	SEC.27-T05N-R63W		

## HOLE & CASING SECTIONS -

Ref Wellbore: NORTH PLATTE K31-O34-34HNB AWB Ref Wellpath: NORTH PLATTE K31-O34-34HNB AWP

String/Diameter	Start MD [ft]	End MD [ft]	Interval [ft]	Start TVD [ft]	End TVD [ft]	Start N/S [ft]	Start E/W [ft]	End N/S [ft]	End E/W [ft]
13.5in Open Hole	17.00	1662.00	1645.00	17.00	1661.95	0.00	0.00	-5.84	-3.80
9.625in Casing Surface	17.00	1662.00	1645.00	17.00	1661.95	0.00	0.00	-5.84	-3.80
8.75in Open Hole	1662.00	6897.00	5235.00	1661.95	6352.19	-5.84	-3.80	-1821.41	253.43
7in Casing Intermediate	17.00	6887.00	6870.00	17.00	6351.30	0.00	0.00	-1811.46	252.88
6.125in Open Hole	6897.00	11068.00	4171.00	6352.19	6331.51	-1821.41	253.43	-5990.25	306.15

## TARGETS

Name	TVD [ft]	North [ft]	East [ft]	Grid East [US ft]	Grid North [US ft]	Latitude	Longitude	Shape
SEC.27-T05N-R63W	0.00	-49.40	-31.38	3300253.24	1378122.53	40°21'58.824"N	104°25'20.784"W	polygon
SEC.34-T05N-R63W	0.00	-49.40	-31.38	3300253.24	1378122.53	40°21'58.824"N	104°25'20.784"W	polygon
NORTH PLATTE K31-O34-34HNB BHL ON PLAT (470'FSL & 2397'FEL, SEC.34)	6327.00	-5994.93	294.72	3300651.55	1372181.67	40°21'00.072"N	104°25'16.572"W	point
NORTH PLATTE K31-O34-34HNB EP ON PLAT	6327.00	-1717.94	250.08	3300554.94	1376457.61	40°21'42.336"N	104°25'17.148"W	point
SEC.34-T05N-R63W HARDLINES (460'FSL)	6327.00	-49.40	-31.38	3300253.24	1378122.53	40°21'58.824"N	104°25'20.784"W	polygon

## WELLPATH COMPOSITION -

Ref Wellbore: NORTH PLATTE K31-O34-34HNB AWB Ref Wellpath: NORTH PLATTE K31-O34-34HNB AWP

Start MD [ft]	End MD [ft]	Positional Uncertainty Model	Log Name/Comment	Wellbore
17.00	6848.00	NaviTrak (MagCorr)	BHI MWD/NAVITRAK (MAGCORR) 8.75" HOLE<337-6848>	NORTH PLATTE K31-O34-34HNB AWB
6848.00	11013.00	NaviTrak (MagCorr)	BHI MWD/NAVITRAK (MAGCORR) 6.125" HOLE <6943-11013>	NORTH PLATTE K31-O34-34HNB AWB
11013.00	11068.00	Blind Drilling (std)	Projection to bit	NORTH PLATTE K31-O34-34HNB AWB



# Actual Wellpath Report

NORTH PLATTE K31-O34-34HNB AWP

Page 5 of 5



## REFERENCE WELLPATH IDENTIFICATION

Operator	BONANZA CREEK OIL COMPANY	Slot	SLOT#04 NORTH PLATTE K31-O34-34HNB (1187'FSL & 2492'FWL, SEC.27)
Area	COLORADO	Well	NORTH PLATTE K31-O34-34HNB
Field	WELD COUNTY	Wellbore	NORTH PLATTE K31-O34-34HNB AWB
Facility	SEC.27-T05N-R63W		

## WELLPATH COMMENTS

MD [ft]	Inclination [°]	Azimuth [°]	TVD [ft]	Comment
337.00	0.490	242.170	337.00	FIRST BHI MWD SURVEY
6887.00	84.671	176.790	6351.30	7" CASING (624'FNL & 2439'FEL, SEC.34)
6940.00	86.941	177.519	6355.18	TOP (675'FNL & 2437'FEL, SEC.34)
11013.00	92.990	178.450	6334.38	LAST BHI MWD SURVEY
11068.00	92.990	178.450	6331.51	PROJECTION TO BIT (475'FSL & 2385'FEL, SEC.34)