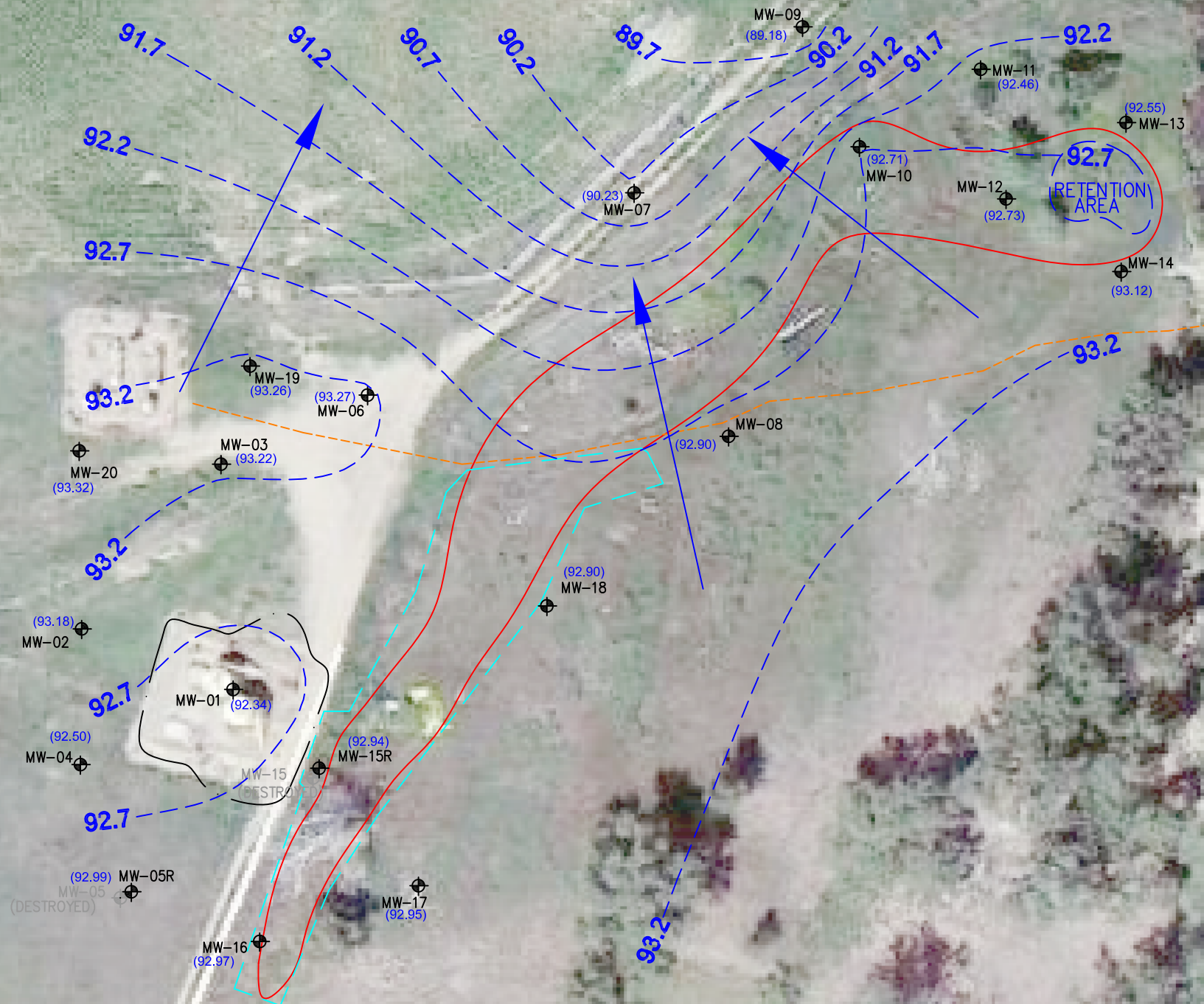


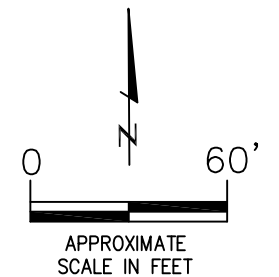
## **FIGURES**

**Figure 1: Groundwater Elevation Map (09/15/15)**

**Figure 2: Groundwater Sample Location Map (09/15/15)**



- LEGEND
- APPROXIMATE EXTENTS OF STATE M36-3, M36-5, 6-36 7-36, AND 8-36 TANK BATTERY EXCAVATION
  - APPROXIMATE EXTENT OF SURFACE STAINING
  - APPROXIMATE LOCATION OF ABANDONED DCP MIDSTREAM UNDERGROUND UTILITY
  - APPROXIMATE LOWER EXCAVATION EXTENTS
  - APPROXIMATE MONITORING WELL LOCATIONS
  - (NOP) - NOT ON SAMPLING PLAN
  - (98.25) GROUNDWATER ELEVATION (FT.)
  - INFERRED GROUNDWATER ELEVATION CONTOUR (FT.)
  - APPROXIMATE GROUNDWATER FLOW DIRECTION
- FT. = FEET



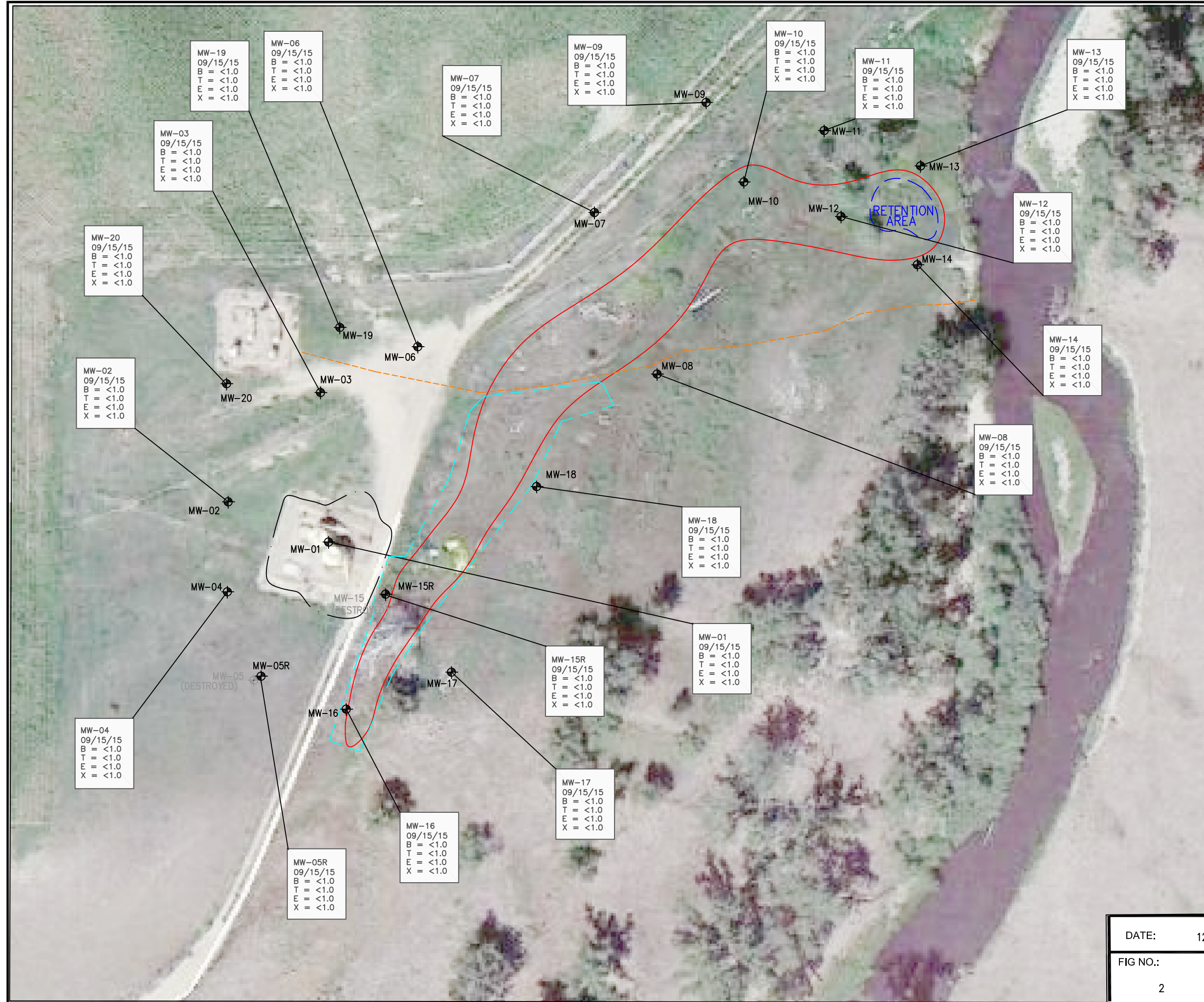
GROUNDWATER ELEVATION MAP  
(09/15/15)  
STATE M36-3, M36-5, 6-36, 7-36, AND 8-36  
PRODUCTION TANK RELEASE  
40.444259/-104.845056  
SW1/4 NW1/4 SEC.36 T6N R67W 6 PM  
WELD COUNTY, COLORADO  
REMEDATION # 8495

DATE:	12/1/15
FIG NO.:	DRAWN BY:
1	amn



**EAGLE**  
ENVIRONMENTAL  
CONSULTING, INC.  
4101 INCA STREET, DENVER, CO 80211  
Ph: 303-433-0479 • F: 303-325-5449





LEGEND

- APPROXIMATE EXTENTS OF STATE M36-3, M36-5, 6-36 7-36, AND 8-36 TANK BATTERY EXCAVATION
- APPROXIMATE EXTENT OF SURFACE STAINING
- APPROXIMATE LOCATION OF ABANDONED DCP MIDSTREAM UNDERGROUND UTILITY
- APPROXIMATE LOWER EXCAVATION EXTENTS
- APPROXIMATE MONITORING WELL LOCATIONS
- (NOP) - NOT ON SAMPLING PLAN

PARAMETERS

SAMPLE LOCATION  
DATE  
B = BENZENE (µg/L)  
T = TOLUENE (µg/L)  
E = ETHYLBENZENE (µg/L)  
X = TOTAL XYLENES (µg/L)

µg/L = MICROGRAMS PER LITER

COGCC = COLORADO OIL AND GAS CONSERVATION COMMISSION.

VALUES PRESENTED WITH A LESS THAN SYMBOL (<) INDICATE CONCENTRATIONS WERE NOT OBSERVED AT OR ABOVE THE LABORATORY REPORTING LIMIT.

MONITORING WELL MW-15 WAS OBSERVED DESTROYED DURING THE JUNE 2015 GROUNDWATER SAMPLING EVENT. MW-5 WAS OBSERVED DESTROYED DURING THE JULY MONITORING WELL INSTALL EVENT. MW-5 AND MW-15 WERE REPLACED 7/27/15.

NOTE: TANK BATTERY LAYOUT HAS BEEN MODIFIED SINCE AERIAL WAS TAKEN. AERIAL NOT UP TO DATE WITH CURRENT TANK BATTERY LAYOUT.

0 60'

APPROXIMATE SCALE IN FEET

GROUNDWATER SAMPLE LOCATION MAP  
(09/15/15)

STATE M36-3, M36-5, 6-36, 7-36, AND 8-36  
PRODUCTION TANK RELEASE  
40.444259/-104.845056  
SW1/4 NW1/4 SEC.36 T6N R67W 6 PM  
WELD COUNTY, COLORADO  
REMEDATION # 8495

DATE:	12/1/15
FIG NO.:	2
DRAWN BY:	amn

**EAGLE**  
ENVIRONMENTAL  
CONSULTING, INC.  
4101 INCA STREET, DENVER, CO 80211  
Ph: 303-433-0479 • F: 303-325-5449

## **TABLES**

**Table 1: Groundwater Analytical Results Summary**

**Table 2: Groundwater Elevation and Parameters Summary**

TABLE 1  
GROUNDWATER ANALYTICAL RESULTS SUMMARY  
STATE M36-3, M36-5, 6-36, 7-36, AND 8-36  
PRODUCTION TANK RELEASE  
40.444259/-104.845056  
SW¼ NW¼ SEC. 36, T6N, R67W, 6 PM  
WELD COUNTY, COLORADO  
REMEDIATION # 8495

Sample Location (Latitude/Longitude)	Date	Benzene (µg/L)	Toluene (µg/L)	Ethylbenzene (µg/L)	Total Xylenes (µg/L)
<b>COGCC Table 910-1 Regulatory Limits (µg/L)</b>		<b>5</b>	<b>560</b>	<b>700</b>	<b>1400</b>
GW-01 (40.444307 / -104.845131)	06/24/14	2470	1380	892	5890
Surface Pond (40.444856 / -104.843792)	06/24/14	<1.0	<1.0	<1.0	<1.0
SS-22-GW (40.444194133 / -104.844911559)	06/25/14	25.2	20.4	<4.0	<4.0
SS-23-GW (40.444381772 / -104.844747628)	06/25/14	11.1	<4.0	<4.0	<4.0
SS-24-GW (40.44458152 / -104.84470946)	06/25/14	<1.0	<1.0	<1.0	<1.0
SS-25-GW (40.444877225 / -104.844225377)	06/25/14	<1.0	<1.0	<1.0	<1.0
SS-26-GW (40.444844744 / -104.843751845)	06/25/14	<1.0	<1.0	<1.0	<1.0
SS-27-GW (40.443969064 / -104.845038769)	06/26/14	<1.0	<1.0	<1.0	<1.0
SS-28-GW (40.444048624 / -104.845071473)	06/26/14	<1.0	<1.0	<1.0	<1.0
SS-29-GW (40.444024316 / -104.844993703)	06/26/14	<1.0	<1.0	<1.0	<1.0
SS-31-GW (40.444159548 / -104.844851054)	06/26/14	<1.0	<1.0	<1.0	<1.0
SS-32-GW (40.444401989 / -104.844780656)	06/26/14	29.1	2.8	<1.0	4.6
SS-33-GW (40.444344011 / -104.844668852)	06/26/14	<1.0	<1.0	<1.0	<1.0
SS-34-GW (40.444609565 / -104.844739569)	06/27/14	1.6	<1.0	<1.0	<1.0
SS-35-GW (40.444527337 / -104.844575814)	06/27/14	<1.0	<1.0	<1.0	<1.0
SS-36-GW (40.444761834 / -104.844498553)	06/27/14	<1.0	<1.0	<1.0	<1.0
SS-37-GW (40.444662913 / -104.844327325)	06/27/14	<1.0	<1.0	<1.0	<1.0
SS-38-GW (40.444873363 / -104.844334236)	06/27/14	<1.0	<1.0	<1.0	<1.0
SS-39-GW (40.444815128 / -104.844179929)	06/27/14	3.5	<1.0	<1.0	<1.0
SS-40-GW (40.444992512 / -104.844184169)	06/27/14	7.8	<1.0	<1.0	<1.0
SS-41-GW (40.444958298 / -104.843786868)	06/27/14	<1.0	<1.0	<1.0	<1.0
SS-42-GW (40.444778035 / -104.843763308)	06/27/14	<4.0	<4.0	<4.0	<4.0
SS-43-GW (40.44488832 / -104.843703757)	06/27/14	<1.0	<1.0	<1.0	<1.0
SS-44-GW (40.444624838 / -104.843855268)	06/27/14	<1.0	<1.0	<1.0	<1.0
SS-45-GW (40.444495488 / -104.843933899)	06/27/14	<1.0	<1.0	<1.0	<1.0
SS-46-GW (40.444300036 / -104.844105806)	06/27/14	<1.0	<1.0	<1.0	<1.0
SS-47-GW (40.445050479 / -104.844150918)	06/30/14	<1.0	<1.0	<1.0	<1.0
SS-48-GW (40.44501361 / -104.844059742)	06/30/14	<1.0	<1.0	<1.0	<1.0
TBSB-01-GW (40.444470809 / -104.845024968)	06/30/14	68.1	<1.0	1.8	15.0
TBSB-02-GW (40.444347698 / -104.845291808)	06/30/14	<1.0	<1.0	<1.0	<1.0
TBSB-03-GW (40.444167498 / -104.845295342)	06/30/14	<1.0	<1.0	<1.0	<1.0

**TABLE 1**  
**GROUNDWATER ANALYTICAL RESULTS SUMMARY**  
**STATE M36-3, M36-5, 6-36, 7-36, AND 8-36**  
**PRODUCTION TANK RELEASE**  
**40.444259/-104.845056**  
**SW¼ NW¼ SEC. 36, T6N, R67W, 6 PM**  
**WELD COUNTY, COLORADO**  
**REMEDATION # 8495**

Sample Location (Latitude/Longitude)	Date	Benzene (µg/L)	Toluene (µg/L)	Ethylbenzene (µg/L)	Total Xylenes (µg/L)
<b>COGCC Table 910-1 Regulatory Limits (µg/L)</b>		<b>5</b>	<b>560</b>	<b>700</b>	<b>1400</b>
MW-01 (40.4442984192 / -104.845097276)	10/09/14	17.7	<1.0	<1.0	4.4
	03/19/15	1.7	<1.0	<1.0	<1.0
	06/25/15	24.1	<1.0	3.0	<1.0
	09/15/15	<1.0	<1.0	<1.0	<1.0
MW-02 (40.4443738812 / -104.845307671)	10/09/14	<1.0	<1.0	<1.0	<1.0
	03/19/15	<1.0	<1.0	<1.0	<1.0
	06/25/15	<1.0	<1.0	<1.0	<1.0
	09/15/15	<1.0	<1.0	<1.0	<1.0
MW-03 (40.4445555982 / -104.845110257)	10/09/14	<1.0	<1.0	<1.0	<1.0
	03/19/15	11.9	<1.0	<1.0	<1.0
	04/01/15	12.9	<1.0	<1.0	<1.0
	06/25/15	17.8	<1.0	<1.0	<1.0
	09/15/15	<1.0	<1.0	<1.0	<1.0
MW-04 (40.4442042132 / -104.845320992)	10/09/14	<1.0	<1.0	<1.0	<1.0
	03/19/15	<1.0	<1.0	<1.0	<1.0
	06/25/15	<1.0	<1.0	<1.0	<1.0
	09/15/15	<1.0	<1.0	<1.0	<1.0
MW-05 (40.4440557552 / -104.845269544)	10/09/14	<1.0	<1.0	<1.0	<1.0
	03/19/15	<1.0	<1.0	<1.0	<1.0
	06/25/15	<1.0	<1.0	<1.0	<1.0
	07/28/15	DESTROYED			
MW-05R (40.4440557550 / -104.845269540)	07/28/15	NS	NS	NS	NS
	09/15/15	<1.0	<1.0	<1.0	<1.0
MW-06 (40.4446472222 / -104.844883852)	10/09/14	<1.0	<1.0	<1.0	<1.0
	03/19/15	<1.0	<1.0	<1.0	<1.0
	06/24/15	<1.0	<1.0	<1.0	<1.0
	09/15/15	<1.0	<1.0	<1.0	<1.0
MW-07 (40.4448577152 / -104.844490124)	10/09/14	<1.0	<1.0	<1.0	<1.0
	03/19/15	<1.0	<1.0	<1.0	<1.0
	06/24/15	<1.0	<1.0	<1.0	<1.0
	09/15/15	<1.0	<1.0	<1.0	<1.0
MW-08 (40.4446005042 / -104.844397129)	10/10/14	<1.0	<1.0	<1.0	<1.0
	03/19/15	<1.0	<1.0	<1.0	<1.0
	06/25/15	<1.0	<1.0	<1.0	<1.0
	09/15/15	<1.0	<1.0	<1.0	<1.0
MW-09 (40.4450361712 / -104.844249498)	10/09/14	<1.0	<1.0	<1.0	<1.0
	03/19/15	<1.0	<1.0	<1.0	<1.0
	06/24/15	<1.0	<1.0	<1.0	<1.0
	09/15/15	<1.0	<1.0	<1.0	<1.0
MW-10 (40.4449045162 / -104.844167041)	10/10/14	<1.0	<1.0	<1.0	<1.0
	03/19/15	<1.0	<1.0	<1.0	<1.0
	06/24/15	<1.0	<1.0	<1.0	<1.0
	09/15/15	<1.0	<1.0	<1.0	<1.0
MW-11 (40.4449911952 / -104.843986073)	10/10/14	<1.0	<1.0	<1.0	<1.0
	03/19/15	<1.0	<1.0	<1.0	<1.0
	06/24/15	<1.0	<1.0	<1.0	<1.0
	09/15/15	<1.0	<1.0	<1.0	<1.0
MW-12 (40.4448427762 / -104.843944947)	10/10/14	<1.0	<1.0	<1.0	<1.0
	03/19/15	<1.0	<1.0	<1.0	<1.0
	06/24/15	<1.0	<1.0	<1.0	<1.0
	09/15/15	<1.0	<1.0	<1.0	<1.0

TABLE 1  
GROUNDWATER ANALYTICAL RESULTS SUMMARY  
STATE M36-3, M36-5, 6-36, 7-36, AND 8-36  
PRODUCTION TANK RELEASE  
40.444259/-104.845056  
SW¼ NW¼ SEC. 36, T6N, R67W, 6 PM  
WELD COUNTY, COLORADO  
REMEDATION # 8495

Sample Location (Latitude/Longitude)	Date	Benzene (µg/L)	Toluene (µg/L)	Ethylbenzene (µg/L)	Total Xylenes (µg/L)
<b>COGCC Table 910-1 Regulatory Limits (µg/L)</b>		<b>5</b>	<b>560</b>	<b>700</b>	<b>1400</b>
MW-13 (40.4449321532 / -104.843770355)	10/10/14	<1.0	<1.0	<1.0	<1.0
	03/19/15	<1.0	<1.0	<1.0	<1.0
	06/24/15	<1.0	<1.0	<1.0	<1.0
	09/15/15	<1.0	<1.0	<1.0	<1.0
MW-14 (40.4447805932 / -104.843778042)	10/10/14	<1.0	<1.0	<1.0	<1.0
	03/19/15	<1.0	<1.0	<1.0	<1.0
	06/24/15	<1.0	<1.0	<1.0	<1.0
	09/15/15	<1.0	<1.0	<1.0	<1.0
MW-15 (40.444233392 / -104.844971393)	03/19/15	<1.0	<1.0	<1.0	<1.0
	06/24/15	DESTROYED			
MW-15R (40.444233394 / -104.844971392)	07/28/15	NS	NS	NS	NS
	09/15/15	<1.0	<1.0	<1.0	<1.0
MW-16 (40.4440443272 / -104.845069258)	03/19/15	<1.0	<1.0	<1.0	<1.0
	06/25/15	<1.0	<1.0	<1.0	<1.0
	09/15/15	<1.0	<1.0	<1.0	<1.0
MW-17 (40.4441232392 / -104.844816831)	03/19/15	<1.0	<1.0	<1.0	<1.0
	06/25/15	<1.0	<1.0	<1.0	<1.0
	09/15/15	<1.0	<1.0	<1.0	<1.0
MW-18 (40.4443902552 / -104.844642734)	03/19/15	<1.0	<1.0	<1.0	<1.0
	06/25/15	<1.0	<1.0	<1.0	<1.0
	09/15/15	<1.0	<1.0	<1.0	<1.0
MW-19 (40.444680924 / -104.84509023)	07/28/15	<1.0	<1.0	<1.0	<1.0
	09/15/15	<1.0	<1.0	<1.0	<1.0
MW-20 (40.44458423 / -104.84530123)	07/28/15	<1.0	<1.0	<1.0	<1.0
	09/15/15	<1.0	<1.0	<1.0	<1.0
COGCC = Colorado Oil and Gas Conservation Commission µg/L - micrograms per liter NS = Not Sampled Note: Values presented with a less than symbol (<) indicate concentrations were not observed at or above the laboratory reporting limit. Values presented in bold typeface exceed their respective COGCC - Regulatory Limits (Table 910-1).					

**TABLE 2**  
**GROUNDWATER ELEVATION AND PARAMETERS SUMMARY**  
**STATE M36-3, M36-5, 6-36, 7-36, AND 8-36**  
**PRODUCTION TANK RELEASE**  
**40.444259/-104.845056**  
**SW¼ NW¼ SEC. 36, T6N, R67W, 6 PM**  
**WELD COUNTY, COLORADO**  
**REMEDATION # 8495**

Sample Location (Latitude/Longitude)	Date	Top of Casing Elevation (feet)	Depth to Groundwater (feet)	Groundwater Elevation (feet)	Dissolved Oxygen (mg/L)	Temperature (°C)	pH	Specific Conductivity (µS/cm)	Oxidation Reduction Potential (mV)
MW-01 (40.4442984192 / -104.845097276)	10/09/14	98.56	7.53	91.03	NM	NM	NM	NM	NM
	03/19/15		5.93	92.63	0.93	8.39	7.15	2395	-181.0
	06/25/15		3.22	95.34	1.66	18.72	7.25	1691	14.7
	09/15/15		6.22	92.34	NM	NM	NM	NM	NM
MW-02 (40.4443738812 / -104.845307671)	10/09/14	102.11	9.00	93.11	NM	NM	NM	NM	NM
	03/19/15		8.69	93.42	0.65	8.91	6.96	2326	144.6
	06/25/15		5.55	96.56	2.11	17.76	7.20	2426	102.3
	09/15/15		8.93	93.18	NM	NM	NM	NM	NM
MW-03 (40.4445555982 / -104.845110257)	10/09/14	99.43	8.36	91.07	NM	NM	NM	NM	NM
	03/19/15		5.91	93.52	0.86	9.69	6.97	2119	58.4
	06/25/15		3.71	95.72	0.99	15.69	7.16	2217	-6.6
	09/15/15		6.21	93.22	NM	NM	NM	NM	NM
MW-04 (40.4442042132 / -104.845320992)	10/09/14	98.03	7.83	90.20	NM	NM	NM	NM	NM
	03/19/15		5.21	92.82	0.60	9.75	7.02	2338	160.3
	06/25/15		2.53	95.50	2.81	17.31	7.14	1845	125.4
	09/15/15		5.53	92.50	NM	NM	NM	NM	NM
MW-05 (40.4440557552 / -104.845269544)	10/09/14	97.38	6.33	91.05	NM	NM	NM	NM	NM
	03/19/15		4.68	92.70	0.73	9.28	7.06	2380	166.7
	06/25/15		2.06	95.32	1.86	18.08	7.26	1503	130.8
	07/27/15	DES	DES	DES	DES	DES	DES	DES	DES
MW-05R (40.4440557550 / -104.845269540)	07/28/15	98.06	NM	NM	NM	NM	NM	NM	NM
	09/15/15		5.07	92.99	NM	NM	NM	NM	NM
MW-06 (40.4446472222 / -104.844883852)	10/09/14	100.00	8.06	91.94	NM	NM	NM	NM	NM
	03/19/15		6.50	93.50	0.97	9.88	7.06	2404	174.7
	06/24/15		3.12	96.88	1.94	17.84	7.24	2411	103.6
	09/15/15		6.73	93.27	NM	NM	NM	NM	NM





**TABLE 2**  
**GROUNDWATER ELEVATION AND PARAMETERS SUMMARY**  
**STATE M36-3, M36-5, 6-36, 7-36, AND 8-36**  
**PRODUCTION TANK RELEASE**  
**40.444259/-104.845056**  
**SW¼ NW¼ SEC. 36, T6N, R67W, 6 PM**  
**WELD COUNTY, COLORADO**  
**REMEDIATION # 8495**

Sample Location (Latitude/Longitude)	Date	Top of Casing Elevation (feet)	Depth to Groundwater (feet)	Groundwater Elevation (feet)	Dissolved Oxygen (mg/L)	Temperature (°C)	pH	Specific Conductivity (µS/cm)	Oxidation Reduction Potential (mV)
MW-07 (40.4448577152 / -104.844490124)	10/09/14	97.63	7.85	89.78	NM	NM	NM	NM	NM
	03/19/15		7.18	90.45	0.87	8.70	7.07	2642	175.4
	06/24/15		3.93	93.70	3.23	19.04	7.10	2556	115.3
	09/15/15		7.40	90.23	NM	NM	NM	NM	NM
MW-08 (40.4446005042 / -104.844397129)	10/10/14	100.28	7.56	92.72	NM	NM	NM	NM	NM
	03/19/15		7.14	93.14	0.84	8.45	6.84	2665	184.3
	06/25/15		4.78	95.50	3.57	16.98	6.98	4394	224.7
	09/15/15		7.38	92.90	NM	NM	NM	NM	NM
MW-09 (40.4450361712 / -104.844249498)	10/09/14	95.94	7.32	88.62	NM	NM	NM	NM	NM
	03/19/15		6.61	89.33	0.98	10.78	6.96	2762	183.4
	06/24/15		4.10	91.84	2.96	16.91	7.21	2911	112.3
	09/15/15		6.76	89.18	NM	NM	NM	NM	NM
MW-10 (40.4449045162 / -104.844167041)	10/10/14	100.72	8.20	92.52	NM	NM	NM	NM	NM
	03/19/15		7.83	92.89	1.70	7.70	6.79	2964	176.5
	06/24/15		5.13	95.59	1.60	18.42	7.16	2619	110.5
	09/15/15		8.01	92.71	NM	NM	NM	NM	NM
MW-11 (40.4449911952 / -104.843986073)	10/10/14	101.64	9.37	92.27	NM	NM	NM	NM	NM
	03/19/15		9.01	92.63	2.91	7.70	6.93	2085	163.0
	06/24/15		6.59	95.05	1.77	16.47	7.08	3116	169.1
	09/15/15		9.18	92.46	NM	NM	NM	NM	NM
MW-12 (40.4448427762 / -104.843944947)	10/10/14	100.31	7.75	92.56	NM	NM	NM	NM	NM
	03/19/15		7.40	92.91	2.74	7.18	6.62	4684	84.6
	06/24/15		4.88	95.43	2.11	15.81	7.15	2818	67.4
	09/15/15		7.58	92.73	NM	NM	NM	NM	NM



**TABLE 2**  
**GROUNDWATER ELEVATION AND PARAMETERS SUMMARY**  
**STATE M36-3, M36-5, 6-36, 7-36, AND 8-36**  
**PRODUCTION TANK RELEASE**  
**40.444259/-104.845056**  
**SW¼ NW¼ SEC. 36, T6N, R67W, 6 PM**  
**WELD COUNTY, COLORADO**  
**REMEDATION # 8495**

Sample Location (Latitude/Longitude)	Date	Top of Casing Elevation (feet)	Depth to Groundwater (feet)	Groundwater Elevation (feet)	Dissolved Oxygen (mg/L)	Temperature (°C)	pH	Specific Conductivity (µS/cm)	Oxidation Reduction Potential (mV)
MW-13 (40.4449321532 / -104.843770355)	10/10/14	100.40	8.05	92.35	NM	NM	NM	NM	NM
	03/19/15		7.78	92.62	2.86	7.35	6.89	2193	231.6
	06/24/15		5.61	94.79	1.82	14.99	7.25	3389	44.3
	09/15/15		7.85	92.55	NM	NM	NM	NM	NM
MW-14 (40.4447805932 / -104.843778042)	10/10/14	99.91	7.01	92.90	NM	NM	NM	NM	NM
	03/19/15		6.66	93.25	2.53	7.59	6.81	2985	222.7
	06/24/15		4.35	95.56	3.12	16.26	7.19	2429	109.9
	09/15/15		6.79	93.12	NM	NM	NM	NM	NM
MW-15 (40.444233392 / -104.844971393)	03/19/15	101.84	8.59	93.25	1.28	8.85	7.07	2376	92.3
	06/24/15	DES	DES	DES	DES	DES	DES	DES	DES
MW-15R (40.444233394 / -104.844971392)	07/28/15	102.08	NM	NM	NM	NM	NM	NM	NM
	09/15/15		9.14	92.94	NM	NM	NM	NM	NM
MW-16 (40.4440443272 / -104.845069258)	03/19/15	102.38	9.09	93.29	0.54	9.17	7.01	2254	24.0
	06/25/15		6.48	95.90	2.36	16.08	7.13	1726	146.4
	09/15/15		9.41	92.97	NM	NM	NM	NM	NM
MW-17 (40.4441232392 / -104.844816831)	03/19/15	102.15	8.90	93.25	2.17	8.79	7.10	2460	53.5
	06/25/15		6.31	95.84	2.34	15.35	7.31	2060	190.4
	09/15/15		9.20	92.95	NM	NM	NM	NM	NM



**TABLE 2**  
**GROUNDWATER ELEVATION AND PARAMETERS SUMMARY**  
**STATE M36-3, M36-5, 6-36, 7-36, AND 8-36**  
**PRODUCTION TANK RELEASE**  
**40.444259/-104.845056**  
**SW¼ NW¼ SEC. 36, T6N, R67W, 6 PM**  
**WELD COUNTY, COLORADO**  
**REMEDIATION # 8495**

Sample Location (Latitude/Longitude)	Date	Top of Casing Elevation (feet)	Depth to Groundwater (feet)	Groundwater Elevation (feet)	Dissolved Oxygen (mg/L)	Temperature (°C)	pH	Specific Conductivity (µS/cm)	Oxidation Reduction Potential (mV)
MW-18 (40.4443902552 / -104.844642734)	03/19/15	101.52	8.38	93.14	0.75	9.10	7.02	2389	105.0
	06/25/15		5.93	95.59	2.56	16.63	7.26	2242	198.9
	09/15/15		8.62	92.90	NM	NM	NM	NM	NM
MW-19 (40.444680924 / -104.84509023)	07/28/15	99.68	5.92	93.76	0.73	16.20	7.51	2458	-168.0
	09/15/15		6.42	93.26	NM	NM	NM	NM	NM
MW-20 (40.44458423 / -104.84530123)	07/28/15	99.65	5.80	93.85	2.83	17.15	7.18	2503	-37.9
	09/15/15		6.33	93.32	NM	NM	NM	NM	NM
NOTES: NM - Not Measured °F = degrees Fahrenheit mg/L = milligrams per liter µS/cm = microsiemens per centimeter mV = millivolts									



## **ATTACHMENT A**

### **Laboratory Analytical Report**



September 18, 2015

Eagle Environmental Consulting, Inc.

Martin C Eckert III

4101 Inca Street

Denver

CO 80211

**Project Name - Noble - State M36-3, M36-5,  
6-36,7-36 and 8-36**

**Project Number - [none]**

Attached are your analytical results for Noble - State M36-3, M36-5, 6-36,7-36 and 8-36 received by Origins Laboratory, Inc. September 15, 2015. This project is associated with Origins project number X509189-01.

The analytical results in the following report were analyzed under the guidelines of EPA Methods. These methods are identified as follows; "SW" are defined in SW-846, "EPA" are defined in 40CFR part 136 and "SM" are defined in the most current revision of Standard Methods For the Examination of Water and Wastewater.

The analytical results apply specifically to the samples and analyses specified per the attached Chain of Custody. As such, this report shall not be reproduced except in full, without the written approval of Origin's laboratory.

Unless otherwise noted, the analytical results for all soil samples are reported on a wet weight basis. All analytical analyses were performed under NELAP guidelines unless noted by a data qualifier.

Any holding time exceedances, deviations from the method specifications or deviations from Origins Laboratory's Standard Operating Procedures are outlined in the case narrative.

Thank you for selecting Origins for your analytical needs. Please contact us with any questions concerning this report, or if we can help with anything at all.

Origins Laboratory, Inc.  
303.433.1322  
o-squad@oelabinc.com



1725 Elk Place, Denver, CO 80211 | Phone: 303.433.1322 | Fax: 303.265.9645



Eagle Environmental Consulting, Inc.

4101 Inca Street

Denver CO 80211

Martin C Eckert III

Project Number: [none]

Project: Noble - State M36-3, M36-5, 6-36,7-36  
and 8-36

## CROSS REFERENCE REPORT

Sample ID	Laboratory ID	Matrix	Date Sampled	Date Received
MW-01	X509189-01	Water	September 15, 2015 15:40	09/15/2015 17:15
MW-02	X509189-02	Water	September 15, 2015 14:10	09/15/2015 17:15
MW-03	X509189-03	Water	September 15, 2015 15:30	09/15/2015 17:15
MW-04	X509189-04	Water	September 15, 2015 14:00	09/15/2015 17:15
MW-05R	X509189-05	Water	September 15, 2015 13:47	09/15/2015 17:15
MW-06	X509189-06	Water	September 15, 2015 13:30	09/15/2015 17:15
MW-07	X509189-07	Water	September 15, 2015 13:10	09/15/2015 17:15
MW-08	X509189-08	Water	September 15, 2015 13:20	09/15/2015 17:15
MW-09	X509189-09	Water	September 15, 2015 12:57	09/15/2015 17:15
MW-10	X509189-10	Water	September 15, 2015 12:40	09/15/2015 17:15

Origins Laboratory, Inc.



*The results in this report apply to the samples analyzed in  
accordance with the chain of custody document. This  
analytical report must be reproduced in its entirety.*

Eagle Environmental Consulting, Inc.

4101 Inca Street

Denver CO 80211

Martin C Eckert III

Project Number: [none]

Project: Noble - State M36-3, M36-5, 6-36,7-36  
and 8-36

## CROSS REFERENCE REPORT

Sample ID	Laboratory ID	Matrix	Date Sampled	Date Received
MW-11	X509189-11	Water	September 15, 2015 12:30	09/15/2015 17:15
MW-12	X509189-12	Water	September 15, 2015 12:20	09/15/2015 17:15
MW-13	X509189-13	Water	September 15, 2015 12:10	09/15/2015 17:15
MW-14	X509189-14	Water	September 15, 2015 12:00	09/15/2015 17:15
MW-15R	X509189-15	Water	September 15, 2015 14:30	09/15/2015 17:15
MW-16	X509189-16	Water	September 15, 2015 14:50	09/15/2015 17:15
MW-17	X509189-17	Water	September 15, 2015 14:40	09/15/2015 17:15
MW-18	X509189-18	Water	September 15, 2015 14:20	09/15/2015 17:15
MW-19	X509189-19	Water	September 15, 2015 15:20	09/15/2015 17:15
MW-20	X509189-20	Water	September 15, 2015 15:05	09/15/2015 17:15

Origins Laboratory, Inc.



*The results in this report apply to the samples analyzed in  
accordance with the chain of custody document. This  
analytical report must be reproduced in its entirety.*

Eagle Environmental Consulting, Inc.

4101 Inca Street

Denver CO 80211

Martin C Eckert III

Project Number: [none]

Project: Noble - State M36-3, M36-5, 6-36,7-36  
and 8-36

Origins Laboratory, Inc.



*The results in this report apply to the samples analyzed in  
accordance with the chain of custody document. This  
analytical report must be reproduced in its entirety.*

Jen Pellegrini For Noelle Doyle Mathis, President

Eagle Environmental Consulting, Inc.  
4101 Inca Street  
Denver CO 80211

Martin C Eckert III  
Project Number: [none]  
Project: Noble - State M36-3, M36-5, 6-36, 7-36 and 8-36

www.originslaboratory.com  
X509189  
page 1 of 2

Client: EAGLE ENV CONSULTING  
Address: 4101 INCA ST  
DENVER, CO 80211  
Telephone Number: 303 433 0479  
Email Address: MCE@eagle-env.com

Project Manager: MARTIN ECKERT III  
Project Name: STATE M36-3, M36-5, 6-36, 7-36, 012 8-36  
Project Number: ---  
Samples Collected By: A POLANSKY

Sample ID Description	Date Sampled	Time Sampled	# of Containers	Preservative				Matrix			Analysis			Sample Instructions
				Unpreserved	HCl	HNO <sub>3</sub>	Other	Groundwater	Soil	Air Summa Canister #	Other			
MU-01	9/15/15	1540	3	X				X			X			1
MU-02		1410									X			2
MU-03		1530												3
MU-04		1400												4
MU-05R		1347												5
MU-06		1330												6
MU-07		1310												7
MU-08		1320												8
MU-09		1257												9
MU-10		1240												10
Relinquished By: <u>[Signature]</u>	Date: <u>9/15/15</u>	Time: <u>1715</u>	Time: <u>1715</u>	Received By: <u>[Signature]</u>				Received By: <u>[Signature]</u>			Date: <u>9/15/15</u>			Turnaround Time: Same Day <input type="checkbox"/> 24 Hr <input type="checkbox"/> 48 Hr <input type="checkbox"/> 72 Hr <input checked="" type="checkbox"/> Standard

Date Results Needed Noble

Temp Received: 1.3

Bill To MCE

Origins Laboratory, Inc.

*Jefe Pellegrini*

The results in this report apply to the samples analyzed in accordance with the chain of custody document. This analytical report must be reproduced in its entirety.

Eagle Environmental Consulting, Inc.  
4101 Inca Street  
Denver CO 80211

Martin C Eckert III  
Project Number: [none]  
Project: Noble - State M36-3, M36-5, 6-36, 7-36 and 8-36

www.originslaboratory.com

page 2 of 2

Client: ORIGIN LABORATORY, INC

Project Manager: MARTIN ECKERT III

Project Name: STATE M36-3, M36-5, 6-36, 7-36, and 8-36

Project Number: ---

Samples Collected By: A. Romanish

Client: ORIGIN ENV CONSULTING

Address: 4101 INCA ST

Address: DENVER CO 80211

Telephone Number: 303 473 0179

Email Address: MCE36@eagle-env.com

Sample ID Description	Date Sampled	Time Sampled	# of Containers	Preservative	Matrix	Analysis	Sample Instructions
MW-11	9/15/15	1220	3	X	X	X	1
MW-12		1220					2
MW-13		1210					3
MW-14		1200					4
MW-15		1430					5
MW-16		1450					6
MW-17		1440					7
MW-18		1420					8
MW-19		1520					9
MW-20		1505					10
Relinquished By:	Date: 9/15/15	Time: 1715	Received By:	Date: 9/15/15	Time: 1715	Turnaround Time:	
Relinquished By:	Date:	Time:	Received By:	Date:	Time:	Same Day <input type="checkbox"/> 24 Hr <input type="checkbox"/> 48 Hr <input type="checkbox"/> 72 Hr <input checked="" type="checkbox"/> Standard	

Date Results Needed: 9/15/15

Temp Received: 1.3

Bill to Jacob

Origins Laboratory, Inc.

Jefe Pellegrini

The results in this report apply to the samples analyzed in accordance with the chain of custody document. This analytical report must be reproduced in its entirety.



Eagle Environmental Consulting, Inc.

4101 Inca Street

Denver CO 80211

Martin C Eckert III

Project Number: [none]

Project: Noble - State M36-3, M36-5, 6-36, 7-36 and 8-36

Origins Laboratory

F-012207-01-R1  
Effective Date: 01/09/12

## Sample Receipt Checklist

Origins Work Order: X509189

Client: Eagle

Client Project ID: State M36-3, M36-5, 6-36, 7-36 & 8-

Checklist Completed by: Jefe Smith

Shipped Via: Hand

(UPS, FedEx, Hand Delivered, Pick-up, etc.)

Date/time completed: 9/15/13

Airbill #: NA

Matrix(s) Received: (Check all that apply): Soil/Solid ☒ Water ☐ Other: ☐ (Describe)

Cooler Number/Temperature: 1 1.3 °C 1 °C 1 °C 1 °C

Thermometer ID: T053

Requirement Description	Yes	No	N/A	Comments (if any)
If samples require cooling, was the temperature between 0°C to ≤ 6°C <sup>(1)</sup> ?	<u>✓</u>			
Is there ice present (document if blue ice is used)	<u>✓</u>			
Are custody seals present on cooler? (if so, document in comments if they are signed and dated, broken or intact)		<u>✓</u>		
Are custody seals present on each sample container? (if so, document in comments if they are signed and dated, broken or intact)		<u>✓</u>		
Were all samples received intact <sup>(1)</sup> ?	<u>✓</u>			
Was adequate sample volume provided <sup>(1)</sup> ?	<u>✓</u>			
Are short holding time analytes or samples with HTs due within 48 hours present <sup>(1)</sup> ?		<u>✓</u>		
Is a chain-of-custody (COC) present and filled out completely <sup>(1)</sup> ?	<u>✓</u>			
Does the COC agree with the number and type of sample bottles received <sup>(1)</sup> ?	<u>✓</u>			
Do the sample IDs on the bottle labels match the COC <sup>(1)</sup> ?	<u>✓</u>			
Is the COC properly relinquished by the client with date and time recorded <sup>(1)</sup> ?	<u>✓</u>			
For volatiles in water – is there headspace (> ¼ inch bubble) present? If yes, contact client and note in narrative.		<u>✓</u>		
Are samples preserved that require preservation and was it checked <sup>(1)</sup> ? (note ID of confirmation instrument used in comments) / (preservation is not confirmed for subcontracted analyses in order to insure sample integrity)/(pH <2 for samples preserved with HNO <sub>3</sub> , HCL, H <sub>2</sub> SO <sub>4</sub> ) / (pH >10 for samples preserved with NaAsO <sub>2</sub> +NaOH, ZnAc+NaOH)	<u>✓</u>			<u>HCC</u>
Additional Comments (if any):				

<sup>(1)</sup> If NO, then contact the client before proceeding with analysis and note date/time and person contacted as well as the corrective action to in the additional comments (above) and the case narrative.

Jefe Smith  
Reviewed by (Project Manager)

9/16/13  
Date/Time Reviewed

Origins Laboratory, Inc.

Jefe Pellegrini

The results in this report apply to the samples analyzed in accordance with the chain of custody document. This analytical report must be reproduced in its entirety.

Eagle Environmental Consulting, Inc.

4101 Inca Street

Denver CO 80211

Martin C Eckert III

Project Number: [none]

Project: Noble - State M36-3, M36-5, 6-36,7-36  
and 8-36

MW-01

9/15/2015 3:40:00PM

Analyte	Result	Reporting Limit	Units	Dilution	Batch	Prepared	Analyzed	Notes
---------	--------	--------------------	-------	----------	-------	----------	----------	-------

Origins Laboratory, Inc.

X509189-01 (Water)

## BTEX by EPA 8260C

Benzene	ND	1.0	ug/L	1	5116011	09/16/2015	09/17/2015
Toluene	ND	1.0	"	"	"	"	"
Ethylbenzene	ND	1.0	"	"	"	"	"
Xylenes, total	ND	1.0	"	"	"	"	"

Surrogate: 1,2-Dichloroethane-d4	97.3 %	84-121			"	"	"
Surrogate: Toluene-d8	100 %	85-115			"	"	"
Surrogate: 4-Bromofluorobenzene	95.6 %	84-114			"	"	"

Origins Laboratory, Inc.



The results in this report apply to the samples analyzed in accordance with the chain of custody document. This analytical report must be reproduced in its entirety.

Eagle Environmental Consulting, Inc.

4101 Inca Street

Denver CO 80211

Martin C Eckert III

Project Number: [none]

Project: Noble - State M36-3, M36-5, 6-36,7-36  
and 8-36

**MW-02**

**9/15/2015 2:10:00PM**

Analyte	Result	Reporting		Units	Dilution	Batch	Prepared	Analyzed	Notes
		Limit							

**Origins Laboratory, Inc.**

**X509189-02 (Water)**

**BTEX by EPA 8260C**

Benzene	ND	1.0	ug/L	1	5116011	09/16/2015	09/17/2015
Toluene	ND	1.0	"	"	"	"	"
Ethylbenzene	ND	1.0	"	"	"	"	"
Xylenes, total	ND	1.0	"	"	"	"	"

Surrogate: 1,2-Dichloroethane-d4	97.7 %	84-121			"	"	"
Surrogate: Toluene-d8	99.7 %	85-115			"	"	"
Surrogate: 4-Bromofluorobenzene	99.4 %	84-114			"	"	"

Origins Laboratory, Inc.



The results in this report apply to the samples analyzed in accordance with the chain of custody document. This analytical report must be reproduced in its entirety.

Eagle Environmental Consulting, Inc.

4101 Inca Street

Denver CO 80211

Martin C Eckert III

Project Number: [none]

Project: Noble - State M36-3, M36-5, 6-36,7-36  
and 8-36

## MW-03

9/15/2015 3:30:00PM

Analyte	Result	Reporting Limit	Units	Dilution	Batch	Prepared	Analyzed	Notes
---------	--------	--------------------	-------	----------	-------	----------	----------	-------

## Origins Laboratory, Inc.

X509189-03 (Water)

### BTEX by EPA 8260C

Benzene	ND	1.0	ug/L	1	5116011	09/16/2015	09/17/2015
Toluene	ND	1.0	"	"	"	"	"
Ethylbenzene	ND	1.0	"	"	"	"	"
Xylenes, total	ND	1.0	"	"	"	"	"

Surrogate: 1,2-Dichloroethane-d4	98.7 %	84-121			"	"	"
Surrogate: Toluene-d8	99.5 %	85-115			"	"	"
Surrogate: 4-Bromofluorobenzene	101 %	84-114			"	"	"

Origins Laboratory, Inc.



The results in this report apply to the samples analyzed in accordance with the chain of custody document. This analytical report must be reproduced in its entirety.

Eagle Environmental Consulting, Inc.

4101 Inca Street

Denver CO 80211

Martin C Eckert III

Project Number: [none]

Project: Noble - State M36-3, M36-5, 6-36,7-36  
and 8-36

## MW-04

9/15/2015 2:00:00PM

Analyte	Result	Reporting Limit	Units	Dilution	Batch	Prepared	Analyzed	Notes
---------	--------	--------------------	-------	----------	-------	----------	----------	-------

## Origins Laboratory, Inc.

X509189-04 (Water)

### BTEX by EPA 8260C

Benzene	ND	1.0	ug/L	1	5116011	09/16/2015	09/17/2015
Toluene	ND	1.0	"	"	"	"	"
Ethylbenzene	ND	1.0	"	"	"	"	"
Xylenes, total	ND	1.0	"	"	"	"	"

Surrogate: 1,2-Dichloroethane-d4	97.3 %	84-121			"	"	"
Surrogate: Toluene-d8	98.5 %	85-115			"	"	"
Surrogate: 4-Bromofluorobenzene	102 %	84-114			"	"	"

Origins Laboratory, Inc.



The results in this report apply to the samples analyzed in accordance with the chain of custody document. This analytical report must be reproduced in its entirety.



Eagle Environmental Consulting, Inc.

4101 Inca Street

Denver CO 80211

Martin C Eckert III

Project Number: [none]

Project: Noble - State M36-3, M36-5, 6-36,7-36  
and 8-36

MW-05R

9/15/2015 1:47:00PM

Analyte	Result	Reporting Limit	Units	Dilution	Batch	Prepared	Analyzed	Notes
---------	--------	--------------------	-------	----------	-------	----------	----------	-------

Origins Laboratory, Inc.

X509189-05 (Water)

## BTEX by EPA 8260C

Benzene	ND	1.0	ug/L	1	5116011	09/16/2015	09/17/2015
Toluene	ND	1.0	"	"	"	"	"
Ethylbenzene	ND	1.0	"	"	"	"	"
Xylenes, total	ND	1.0	"	"	"	"	"

Surrogate: 1,2-Dichloroethane-d4	98.8 %	84-121			"	"	"
Surrogate: Toluene-d8	98.9 %	85-115			"	"	"
Surrogate: 4-Bromofluorobenzene	97.4 %	84-114			"	"	"

Origins Laboratory, Inc.



The results in this report apply to the samples analyzed in accordance with the chain of custody document. This analytical report must be reproduced in its entirety.

Eagle Environmental Consulting, Inc.

4101 Inca Street

Denver CO 80211

Martin C Eckert III

Project Number: [none]

Project: Noble - State M36-3, M36-5, 6-36,7-36  
and 8-36

## MW-06

9/15/2015 1:30:00PM

Analyte	Result	Reporting Limit	Units	Dilution	Batch	Prepared	Analyzed	Notes
---------	--------	--------------------	-------	----------	-------	----------	----------	-------

## Origins Laboratory, Inc.

X509189-06 (Water)

### BTEX by EPA 8260C

Benzene	ND	1.0	ug/L	1	5116011	09/16/2015	09/17/2015
Toluene	ND	1.0	"	"	"	"	"
Ethylbenzene	ND	1.0	"	"	"	"	"
Xylenes, total	ND	1.0	"	"	"	"	"

Surrogate: 1,2-Dichloroethane-d4	93.6 %	84-121			"	"	"
Surrogate: Toluene-d8	99.1 %	85-115			"	"	"
Surrogate: 4-Bromofluorobenzene	97.1 %	84-114			"	"	"

Origins Laboratory, Inc.



The results in this report apply to the samples analyzed in accordance with the chain of custody document. This analytical report must be reproduced in its entirety.

Eagle Environmental Consulting, Inc.

4101 Inca Street

Denver CO 80211

Martin C Eckert III

Project Number: [none]

Project: Noble - State M36-3, M36-5, 6-36,7-36  
and 8-36

MW-07

9/15/2015 1:10:00PM

Analyte	Result	Reporting		Units	Dilution	Batch	Prepared	Analyzed	Notes
		Limit							

Origins Laboratory, Inc.

X509189-07 (Water)

## BTEX by EPA 8260C

Benzene	ND	1.0	ug/L	1	5116011	09/16/2015	09/17/2015
Toluene	ND	1.0	"	"	"	"	"
Ethylbenzene	ND	1.0	"	"	"	"	"
Xylenes, total	ND	1.0	"	"	"	"	"

Surrogate: 1,2-Dichloroethane-d4	94.7 %	84-121			"	"	"
Surrogate: Toluene-d8	98.6 %	85-115			"	"	"
Surrogate: 4-Bromofluorobenzene	95.4 %	84-114			"	"	"

Origins Laboratory, Inc.



The results in this report apply to the samples analyzed in accordance with the chain of custody document. This analytical report must be reproduced in its entirety.

Eagle Environmental Consulting, Inc.

4101 Inca Street

Denver CO 80211

Martin C Eckert III

Project Number: [none]

Project: Noble - State M36-3, M36-5, 6-36,7-36  
and 8-36

MW-08

9/15/2015 1:20:00PM

Analyte	Result	Reporting		Units	Dilution	Batch	Prepared	Analyzed	Notes
		Limit							

Origins Laboratory, Inc.

X509189-08 (Water)

## BTEX by EPA 8260C

Benzene	ND	1.0	ug/L	1	5116011	09/16/2015	09/17/2015
Toluene	ND	1.0	"	"	"	"	"
Ethylbenzene	ND	1.0	"	"	"	"	"
Xylenes, total	ND	1.0	"	"	"	"	"

Surrogate: 1,2-Dichloroethane-d4	94.5 %	84-121			"	"	"
Surrogate: Toluene-d8	97.9 %	85-115			"	"	"
Surrogate: 4-Bromofluorobenzene	100 %	84-114			"	"	"

Origins Laboratory, Inc.



The results in this report apply to the samples analyzed in accordance with the chain of custody document. This analytical report must be reproduced in its entirety.

Eagle Environmental Consulting, Inc.

4101 Inca Street

Denver CO 80211

Martin C Eckert III

Project Number: [none]

Project: Noble - State M36-3, M36-5, 6-36,7-36  
and 8-36

MW-09

9/15/2015 12:57:00PM

Analyte	Result	Reporting		Units	Dilution	Batch	Prepared	Analyzed	Notes
		Limit							

Origins Laboratory, Inc.

X509189-09 (Water)

## BTEX by EPA 8260C

Benzene	ND	1.0	ug/L	1	5116011	09/16/2015	09/17/2015
Toluene	ND	1.0	"	"	"	"	"
Ethylbenzene	ND	1.0	"	"	"	"	"
Xylenes, total	ND	1.0	"	"	"	"	"

Surrogate: 1,2-Dichloroethane-d4	99.5 %	84-121			"	"	"
Surrogate: Toluene-d8	100 %	85-115			"	"	"
Surrogate: 4-Bromofluorobenzene	100 %	84-114			"	"	"

Origins Laboratory, Inc.



The results in this report apply to the samples analyzed in accordance with the chain of custody document. This analytical report must be reproduced in its entirety.



Eagle Environmental Consulting, Inc.

4101 Inca Street

Denver CO 80211

Martin C Eckert III

Project Number: [none]

Project: Noble - State M36-3, M36-5, 6-36,7-36  
and 8-36

MW-10

9/15/2015 12:40:00PM

Analyte	Result	Reporting Limit	Units	Dilution	Batch	Prepared	Analyzed	Notes
---------	--------	--------------------	-------	----------	-------	----------	----------	-------

Origins Laboratory, Inc.

X509189-10 (Water)

## BTEX by EPA 8260C

Benzene	ND	1.0	ug/L	1	5116011	09/16/2015	09/17/2015
Toluene	ND	1.0	"	"	"	"	"
Ethylbenzene	ND	1.0	"	"	"	"	"
Xylenes, total	ND	1.0	"	"	"	"	"

Surrogate: 1,2-Dichloroethane-d4	96.6 %	84-121			"	"	"
Surrogate: Toluene-d8	97.3 %	85-115			"	"	"
Surrogate: 4-Bromofluorobenzene	96.7 %	84-114			"	"	"

Origins Laboratory, Inc.



The results in this report apply to the samples analyzed in accordance with the chain of custody document. This analytical report must be reproduced in its entirety.

Eagle Environmental Consulting, Inc.

4101 Inca Street

Denver CO 80211

Martin C Eckert III

Project Number: [none]

Project: Noble - State M36-3, M36-5, 6-36,7-36  
and 8-36

MW-11

9/15/2015 12:30:00PM

Analyte	Result	Reporting Limit	Units	Dilution	Batch	Prepared	Analyzed	Notes
---------	--------	--------------------	-------	----------	-------	----------	----------	-------

Origins Laboratory, Inc.

X509189-11 (Water)

## BTEX by EPA 8260C

Benzene	ND	1.0	ug/L	1	5116011	09/16/2015	09/17/2015
Toluene	ND	1.0	"	"	"	"	"
Ethylbenzene	ND	1.0	"	"	"	"	"
Xylenes, total	ND	1.0	"	"	"	"	"

Surrogate: 1,2-Dichloroethane-d4	100 %	84-121			"	"	"
Surrogate: Toluene-d8	101 %	85-115			"	"	"
Surrogate: 4-Bromofluorobenzene	98.2 %	84-114			"	"	"

Origins Laboratory, Inc.



The results in this report apply to the samples analyzed in accordance with the chain of custody document. This analytical report must be reproduced in its entirety.

Eagle Environmental Consulting, Inc.

4101 Inca Street

Denver CO 80211

Martin C Eckert III

Project Number: [none]

Project: Noble - State M36-3, M36-5, 6-36,7-36  
and 8-36

## MW-12

9/15/2015 12:20:00PM

Analyte	Result	Reporting Limit	Units	Dilution	Batch	Prepared	Analyzed	Notes
---------	--------	--------------------	-------	----------	-------	----------	----------	-------

## Origins Laboratory, Inc.

X509189-12 (Water)

### BTEX by EPA 8260C

Benzene	ND	1.0	ug/L	1	5116011	09/16/2015	09/17/2015
Toluene	ND	1.0	"	"	"	"	"
Ethylbenzene	ND	1.0	"	"	"	"	"
Xylenes, total	ND	1.0	"	"	"	"	"

Surrogate: 1,2-Dichloroethane-d4	97.8 %	84-121			"	"	"
Surrogate: Toluene-d8	100 %	85-115			"	"	"
Surrogate: 4-Bromofluorobenzene	98.2 %	84-114			"	"	"

Origins Laboratory, Inc.



The results in this report apply to the samples analyzed in accordance with the chain of custody document. This analytical report must be reproduced in its entirety.

Eagle Environmental Consulting, Inc.

4101 Inca Street

Denver CO 80211

Martin C Eckert III

Project Number: [none]

Project: Noble - State M36-3, M36-5, 6-36,7-36  
and 8-36

## MW-13

9/15/2015 12:10:00PM

Analyte	Result	Reporting Limit	Units	Dilution	Batch	Prepared	Analyzed	Notes
---------	--------	--------------------	-------	----------	-------	----------	----------	-------

## Origins Laboratory, Inc.

X509189-13 (Water)

### BTEX by EPA 8260C

Benzene	ND	1.0	ug/L	1	5116011	09/16/2015	09/17/2015
Toluene	ND	1.0	"	"	"	"	"
Ethylbenzene	ND	1.0	"	"	"	"	"
Xylenes, total	ND	1.0	"	"	"	"	"

Surrogate: 1,2-Dichloroethane-d4	94.0 %	84-121			"	"	"
Surrogate: Toluene-d8	102 %	85-115			"	"	"
Surrogate: 4-Bromofluorobenzene	99.4 %	84-114			"	"	"

Origins Laboratory, Inc.



The results in this report apply to the samples analyzed in accordance with the chain of custody document. This analytical report must be reproduced in its entirety.

Eagle Environmental Consulting, Inc.

4101 Inca Street

Denver CO 80211

Martin C Eckert III

Project Number: [none]

Project: Noble - State M36-3, M36-5, 6-36,7-36  
and 8-36

## MW-14

9/15/2015 12:00:00PM

Analyte	Result	Reporting Limit	Units	Dilution	Batch	Prepared	Analyzed	Notes
---------	--------	--------------------	-------	----------	-------	----------	----------	-------

## Origins Laboratory, Inc.

X509189-14 (Water)

### BTEX by EPA 8260C

Benzene	ND	1.0	ug/L	1	5116011	09/16/2015	09/17/2015
Toluene	ND	1.0	"	"	"	"	"
Ethylbenzene	ND	1.0	"	"	"	"	"
Xylenes, total	ND	1.0	"	"	"	"	"

Surrogate: 1,2-Dichloroethane-d4	96.3 %	84-121			"	"	"
Surrogate: Toluene-d8	99.8 %	85-115			"	"	"
Surrogate: 4-Bromofluorobenzene	98.8 %	84-114			"	"	"

Origins Laboratory, Inc.



The results in this report apply to the samples analyzed in accordance with the chain of custody document. This analytical report must be reproduced in its entirety.

Eagle Environmental Consulting, Inc.

4101 Inca Street

Denver CO 80211

Martin C Eckert III

Project Number: [none]

Project: Noble - State M36-3, M36-5, 6-36,7-36  
and 8-36

**MW-15R**

**9/15/2015 2:30:00PM**

Analyte	Result	Reporting		Units	Dilution	Batch	Prepared	Analyzed	Notes
		Limit							

**Origins Laboratory, Inc.**

**X509189-15 (Water)**

**BTEX by EPA 8260C**

Benzene	ND	1.0	ug/L	1	5116011	09/16/2015	09/17/2015
Toluene	ND	1.0	"	"	"	"	"
Ethylbenzene	ND	1.0	"	"	"	"	"
Xylenes, total	ND	1.0	"	"	"	"	"

Surrogate: 1,2-Dichloroethane-d4	97.5 %	84-121			"	"	"
Surrogate: Toluene-d8	97.7 %	85-115			"	"	"
Surrogate: 4-Bromofluorobenzene	98.4 %	84-114			"	"	"

Origins Laboratory, Inc.



*The results in this report apply to the samples analyzed in accordance with the chain of custody document. This analytical report must be reproduced in its entirety.*

Eagle Environmental Consulting, Inc.

4101 Inca Street

Denver CO 80211

Martin C Eckert III

Project Number: [none]

Project: Noble - State M36-3, M36-5, 6-36,7-36  
and 8-36

## MW-16

9/15/2015 2:50:00PM

Analyte	Result	Reporting Limit	Units	Dilution	Batch	Prepared	Analyzed	Notes
---------	--------	--------------------	-------	----------	-------	----------	----------	-------

## Origins Laboratory, Inc.

X509189-16 (Water)

### BTEX by EPA 8260C

Benzene	ND	1.0	ug/L	1	5116011	09/16/2015	09/17/2015
Toluene	ND	1.0	"	"	"	"	"
Ethylbenzene	ND	1.0	"	"	"	"	"
Xylenes, total	ND	1.0	"	"	"	"	"

Surrogate: 1,2-Dichloroethane-d4	97.8 %	84-121			"	"	"
Surrogate: Toluene-d8	99.8 %	85-115			"	"	"
Surrogate: 4-Bromofluorobenzene	98.9 %	84-114			"	"	"

Origins Laboratory, Inc.



The results in this report apply to the samples analyzed in accordance with the chain of custody document. This analytical report must be reproduced in its entirety.



Eagle Environmental Consulting, Inc.

4101 Inca Street

Denver CO 80211

Martin C Eckert III

Project Number: [none]

Project: Noble - State M36-3, M36-5, 6-36,7-36  
and 8-36

MW-17

9/15/2015 2:40:00PM

Analyte	Result	Reporting Limit	Units	Dilution	Batch	Prepared	Analyzed	Notes
---------	--------	--------------------	-------	----------	-------	----------	----------	-------

Origins Laboratory, Inc.

X509189-17 (Water)

## BTEX by EPA 8260C

Benzene	ND	1.0	ug/L	1	5116011	09/16/2015	09/17/2015
Toluene	ND	1.0	"	"	"	"	"
Ethylbenzene	ND	1.0	"	"	"	"	"
Xylenes, total	ND	1.0	"	"	"	"	"

Surrogate: 1,2-Dichloroethane-d4	98.2 %	84-121			"	"	"
Surrogate: Toluene-d8	101 %	85-115			"	"	"
Surrogate: 4-Bromofluorobenzene	97.9 %	84-114			"	"	"

Origins Laboratory, Inc.



The results in this report apply to the samples analyzed in accordance with the chain of custody document. This analytical report must be reproduced in its entirety.

Eagle Environmental Consulting, Inc.

4101 Inca Street

Denver CO 80211

Martin C Eckert III

Project Number: [none]

Project: Noble - State M36-3, M36-5, 6-36,7-36  
and 8-36

MW-18

9/15/2015 2:20:00PM

Analyte	Result	Reporting Limit	Units	Dilution	Batch	Prepared	Analyzed	Notes
---------	--------	--------------------	-------	----------	-------	----------	----------	-------

Origins Laboratory, Inc.

X509189-18 (Water)

## BTEX by EPA 8260C

Benzene	ND	1.0	ug/L	1	5116011	09/16/2015	09/17/2015
Toluene	ND	1.0	"	"	"	"	"
Ethylbenzene	ND	1.0	"	"	"	"	"
Xylenes, total	ND	1.0	"	"	"	"	"

Surrogate: 1,2-Dichloroethane-d4	97.2 %	84-121			"	"	"
Surrogate: Toluene-d8	101 %	85-115			"	"	"
Surrogate: 4-Bromofluorobenzene	97.7 %	84-114			"	"	"

Origins Laboratory, Inc.



The results in this report apply to the samples analyzed in accordance with the chain of custody document. This analytical report must be reproduced in its entirety.

Eagle Environmental Consulting, Inc.

4101 Inca Street

Denver CO 80211

Martin C Eckert III

Project Number: [none]

Project: Noble - State M36-3, M36-5, 6-36,7-36  
and 8-36

MW-19

9/15/2015 3:20:00PM

Analyte	Result	Reporting		Units	Dilution	Batch	Prepared	Analyzed	Notes
		Limit							

Origins Laboratory, Inc.  
X509189-19 (Water)

## BTEX by EPA 8260C

Benzene	ND	1.0	ug/L	1	5116011	09/16/2015	09/17/2015
Toluene	ND	1.0	"	"	"	"	"
Ethylbenzene	ND	1.0	"	"	"	"	"
Xylenes, total	ND	1.0	"	"	"	"	"

Surrogate: 1,2-Dichloroethane-d4	96.4 %	84-121			"	"	"
Surrogate: Toluene-d8	98.9 %	85-115			"	"	"
Surrogate: 4-Bromofluorobenzene	98.3 %	84-114			"	"	"

Origins Laboratory, Inc.



The results in this report apply to the samples analyzed in accordance with the chain of custody document. This analytical report must be reproduced in its entirety.

Eagle Environmental Consulting, Inc.

4101 Inca Street

Denver CO 80211

Martin C Eckert III

Project Number: [none]

Project: Noble - State M36-3, M36-5, 6-36,7-36  
and 8-36

MW-20

9/15/2015 3:05:00PM

Analyte	Result	Reporting Limit	Units	Dilution	Batch	Prepared	Analyzed	Notes
---------	--------	--------------------	-------	----------	-------	----------	----------	-------

Origins Laboratory, Inc.

X509189-20 (Water)

## BTEX by EPA 8260C

Benzene	ND	1.0	ug/L	1	5116011	09/16/2015	09/17/2015
Toluene	ND	1.0	"	"	"	"	"
Ethylbenzene	ND	1.0	"	"	"	"	"
Xylenes, total	ND	1.0	"	"	"	"	"

Surrogate: 1,2-Dichloroethane-d4	96.1 %	84-121			"	"	"
Surrogate: Toluene-d8	99.7 %	85-115			"	"	"
Surrogate: 4-Bromofluorobenzene	99.4 %	84-114			"	"	"

Origins Laboratory, Inc.



The results in this report apply to the samples analyzed in accordance with the chain of custody document. This analytical report must be reproduced in its entirety.

Eagle Environmental Consulting, Inc.

4101 Inca Street

Denver CO 80211

Martin C Eckert III

Project Number: [none]

Project: Noble - State M36-3, M36-5, 6-36,7-36  
and 8-36

**Volatile Organic Compounds by GC/MS SW846 8260C - Quality Control**  
**Origins Laboratory, Inc.**

Analyte	Result	Reporting Limit	Units	Spike Level	Source Result	%REC	%REC Limits	RPD	RPD Limit	Notes
---------	--------	--------------------	-------	----------------	------------------	------	----------------	-----	--------------	-------

**Batch 5116011 - EPA 5030B (Water)**

**Blank (5116011-BLK1)**

Prepared: 09/16/2015 Analyzed: 09/17/2015

Benzene	ND	1.0	ug/L							
Toluene	ND	1.0	"							
Ethylbenzene	ND	1.0	"							
Xylenes, total	ND	1.0	"							
Surrogate: 1,2-Dichloroethane-d4	60		"	62.5	96.8		84-121			
Surrogate: Toluene-d8	63		"	62.5	100		85-115			
Surrogate: 4-Bromofluorobenzene	59		"	62.5	94.7		84-114			

Origins Laboratory, Inc.



The results in this report apply to the samples analyzed in accordance with the chain of custody document. This analytical report must be reproduced in its entirety.

Eagle Environmental Consulting, Inc.

4101 Inca Street

Denver CO 80211

Martin C Eckert III

Project Number: [none]

Project: Noble - State M36-3, M36-5, 6-36,7-36  
and 8-36

**Volatile Organic Compounds by GC/MS SW846 8260C - Quality Control**  
**Origins Laboratory, Inc.**

Analyte	Result	Reporting Limit	Units	Spike Level	Source Result	%REC	%REC Limits	RPD	RPD Limit	Notes
---------	--------	-----------------	-------	-------------	---------------	------	-------------	-----	-----------	-------

**Batch 5116011 - EPA 5030B (Water)**

**Blank (5116011-BLK2)**

Prepared: 09/16/2015 Analyzed: 09/17/2015

Benzene	ND	1.0	ug/L							
Toluene	ND	1.0	"							
Ethylbenzene	ND	1.0	"							
Xylenes, total	ND	1.0	"							
Surrogate: 1,2-Dichloroethane-d4	59		"	62.5	94.2		84-121			
Surrogate: Toluene-d8	61		"	62.5	97.7		85-115			
Surrogate: 4-Bromofluorobenzene	61		"	62.5	97.9		84-114			

Origins Laboratory, Inc.



The results in this report apply to the samples analyzed in accordance with the chain of custody document. This analytical report must be reproduced in its entirety.

Eagle Environmental Consulting, Inc.

4101 Inca Street

Denver CO 80211

Martin C Eckert III

Project Number: [none]

Project: Noble - State M36-3, M36-5, 6-36,7-36  
and 8-36

**Volatile Organic Compounds by GC/MS SW846 8260C - Quality Control**  
**Origins Laboratory, Inc.**

Analyte	Result	Reporting Limit	Units	Spike Level	Source Result	%REC	%REC Limits	RPD	RPD Limit	Notes
---------	--------	-----------------	-------	-------------	---------------	------	-------------	-----	-----------	-------

**Batch 5I16011 - EPA 5030B (Water)**

**LCS (5I16011-BS1)**

Prepared: 09/16/2015 Analyzed: 09/17/2015

Benzene	59.5	1.0	ug/L	50.0		119	75-126			
Toluene	57.3	1.0	"	50.0		115	78.7-126			
Ethylbenzene	58.6	1.0	"	50.0		117	80-130			
m,p-Xylene	117	2.0	"	100		117	77.2-133			
o-Xylene	59.0	1.0	"	50.0		118	77.9-126			
Surrogate: 1,2-Dichloroethane-d4	62		"	62.5		99.3	84-121			
Surrogate: Toluene-d8	63		"	62.5		101	85-115			
Surrogate: 4-Bromofluorobenzene	61		"	62.5		97.3	84-114			

Origins Laboratory, Inc.



*The results in this report apply to the samples analyzed in accordance with the chain of custody document. This analytical report must be reproduced in its entirety.*

Jen Pellegrini For Noelle Doyle Mathis, President

Eagle Environmental Consulting, Inc.

4101 Inca Street

Denver CO 80211

Martin C Eckert III

Project Number: [none]

Project: Noble - State M36-3, M36-5, 6-36,7-36  
and 8-36

**Volatile Organic Compounds by GC/MS SW846 8260C - Quality Control**  
**Origins Laboratory, Inc.**

Analyte	Result	Reporting Limit	Units	Spike Level	Source Result	%REC	%REC Limits	RPD	RPD Limit	Notes
---------	--------	--------------------	-------	----------------	------------------	------	----------------	-----	--------------	-------

**Batch 5116011 - EPA 5030B (Water)**

**LCS (5116011-BS2)**

Prepared: 09/16/2015 Analyzed: 09/17/2015

Benzene	45.1	1.0	ug/L	50.0		90.3	75-126			
Toluene	43.7	1.0	"	50.0		87.4	78.7-126			
Ethylbenzene	43.7	1.0	"	50.0		87.4	80-130			
m,p-Xylene	87.1	2.0	"	100		87.1	77.2-133			
o-Xylene	43.3	1.0	"	50.0		86.6	77.9-126			
Surrogate: 1,2-Dichloroethane-d4	59		"	62.5		94.2	84-121			
Surrogate: Toluene-d8	63		"	62.5		101	85-115			
Surrogate: 4-Bromofluorobenzene	61		"	62.5		98.3	84-114			

Origins Laboratory, Inc.



*The results in this report apply to the samples analyzed in  
accordance with the chain of custody document. This  
analytical report must be reproduced in its entirety.*

Jen Pellegrini For Noelle Doyle Mathis, President



Eagle Environmental Consulting, Inc.

4101 Inca Street

Denver CO 80211

Martin C Eckert III

Project Number: [none]

Project: Noble - State M36-3, M36-5, 6-36,7-36  
and 8-36

**Volatile Organic Compounds by GC/MS SW846 8260C - Quality Control**  
**Origins Laboratory, Inc.**

Analyte	Result	Reporting Limit	Units	Spike Level	Source Result	%REC	%REC Limits	RPD	RPD Limit	Notes
---------	--------	-----------------	-------	-------------	---------------	------	-------------	-----	-----------	-------

**Batch 5I16011 - EPA 5030B (Water)**

Matrix Spike (5I16011-MS1)		Source: X509179-01			Prepared: 09/16/2015 Analyzed: 09/18/2015					
Benzene	51.4	1.0	ug/L	50.0	ND	103	74-130			
Toluene	50.8	1.0	"	50.0	ND	102	73-131			
Ethylbenzene	50.0	1.0	"	50.0	ND	100	76-132			
m,p-Xylene	99.8	2.0	"	100	ND	99.8	69-139			
o-Xylene	49.5	1.0	"	50.0	ND	99.1	74-131			
Surrogate: 1,2-Dichloroethane-d4	58		"	62.5		92.5	84-121			
Surrogate: Toluene-d8	63		"	62.5		100	85-115			
Surrogate: 4-Bromofluorobenzene	61		"	62.5		97.1	84-114			

Origins Laboratory, Inc.



The results in this report apply to the samples analyzed in accordance with the chain of custody document. This analytical report must be reproduced in its entirety.

Jen Pellegrini For Noelle Doyle Mathis, President

Eagle Environmental Consulting, Inc.

4101 Inca Street

Denver CO 80211

Martin C Eckert III

Project Number: [none]

Project: Noble - State M36-3, M36-5, 6-36,7-36  
and 8-36

**Volatile Organic Compounds by GC/MS SW846 8260C - Quality Control**  
**Origins Laboratory, Inc.**

Analyte	Result	Reporting Limit	Units	Spike Level	Source Result	%REC	%REC Limits	RPD	RPD Limit	Notes
---------	--------	-----------------	-------	-------------	---------------	------	-------------	-----	-----------	-------

**Batch 5I16011 - EPA 5030B (Water)**

Matrix Spike (5I16011-MS2)		Source: X509179-02			Prepared: 09/16/2015 Analyzed: 09/17/2015					
Benzene	48.7	1.0	ug/L	50.0	ND	97.4	74-130			
Toluene	47.0	1.0	"	50.0	ND	94.0	73-131			
Ethylbenzene	47.8	1.0	"	50.0	ND	95.6	76-132			
m,p-Xylene	95.1	2.0	"	100	ND	95.1	69-139			
o-Xylene	47.8	1.0	"	50.0	ND	95.6	74-131			
Surrogate: 1,2-Dichloroethane-d4	59		"	62.5		94.5	84-121			
Surrogate: Toluene-d8	62		"	62.5		99.2	85-115			
Surrogate: 4-Bromofluorobenzene	64		"	62.5		102	84-114			

Origins Laboratory, Inc.



The results in this report apply to the samples analyzed in accordance with the chain of custody document. This analytical report must be reproduced in its entirety.

Jen Pellegrini For Noelle Doyle Mathis, President

Eagle Environmental Consulting, Inc.

4101 Inca Street

Denver CO 80211

Martin C Eckert III

Project Number: [none]

Project: Noble - State M36-3, M36-5, 6-36,7-36 and 8-36

**Volatile Organic Compounds by GC/MS SW846 8260C - Quality Control**  
**Origins Laboratory, Inc.**

Analyte	Result	Reporting Limit	Units	Spike Level	Source Result	%REC	%REC Limits	RPD	RPD Limit	Notes
---------	--------	-----------------	-------	-------------	---------------	------	-------------	-----	-----------	-------

**Batch 5116011 - EPA 5030B (Water)**

Matrix Spike Dup (5116011-MSD1)		Source: X509179-01			Prepared: 09/16/2015 Analyzed: 09/17/2015					
Benzene	51.4	1.0	ug/L	50.0	ND	103	74-130	0.0194	20	
Toluene	49.3	1.0	"	50.0	ND	98.7	73-131	2.96	20	
Ethylbenzene	49.3	1.0	"	50.0	ND	98.7	76-132	1.45	20	
m,p-Xylene	99.6	2.0	"	100	ND	99.6	69-139	0.140	20	
o-Xylene	49.8	1.0	"	50.0	ND	99.6	74-131	0.584	20	
Surrogate: 1,2-Dichloroethane-d4	59		"	62.5		94.2	84-121			
Surrogate: Toluene-d8	62		"	62.5		99.7	85-115			
Surrogate: 4-Bromofluorobenzene	61		"	62.5		98.0	84-114			

Origins Laboratory, Inc.



The results in this report apply to the samples analyzed in accordance with the chain of custody document. This analytical report must be reproduced in its entirety.

Jen Pellegrini For Noelle Doyle Mathis, President

Eagle Environmental Consulting, Inc.

4101 Inca Street

Denver CO 80211

Martin C Eckert III

Project Number: [none]

Project: Noble - State M36-3, M36-5, 6-36,7-36  
and 8-36

**Volatile Organic Compounds by GC/MS SW846 8260C - Quality Control**  
**Origins Laboratory, Inc.**

Analyte	Result	Reporting Limit	Units	Spike Level	Source Result	%REC	%REC Limits	RPD	RPD Limit	Notes
---------	--------	-----------------	-------	-------------	---------------	------	-------------	-----	-----------	-------

**Batch 5I16011 - EPA 5030B (Water)**

Matrix Spike Dup (5I16011-MSD2)		Source: X509179-02			Prepared: 09/16/2015 Analyzed: 09/17/2015					
Benzene	47.8	1.0	ug/L	50.0	ND	95.5	74-130	1.97	20	
Toluene	45.7	1.0	"	50.0	ND	91.5	73-131	2.76	20	
Ethylbenzene	46.3	1.0	"	50.0	ND	92.6	76-132	3.19	20	
m,p-Xylene	92.6	2.0	"	100	ND	92.6	69-139	2.66	20	
o-Xylene	45.4	1.0	"	50.0	ND	90.9	74-131	5.10	20	
Surrogate: 1,2-Dichloroethane-d4	58		"	62.5		93.4	84-121			
Surrogate: Toluene-d8	63		"	62.5		102	85-115			
Surrogate: 4-Bromofluorobenzene	62		"	62.5		98.4	84-114			

Origins Laboratory, Inc.



The results in this report apply to the samples analyzed in accordance with the chain of custody document. This analytical report must be reproduced in its entirety.

Jen Pellegrini For Noelle Doyle Mathis, President

Eagle Environmental Consulting, Inc.

4101 Inca Street

Denver CO 80211

Martin C Eckert III

Project Number: [none]

Project: Noble - State M36-3, M36-5, 6-36,7-36  
and 8-36

### Notes and Definitions

ND Analyte NOT DETECTED at or above the reporting limit

RPD Relative Percent Difference

All soil results are reported at a wet weight basis.

Origins Laboratory, Inc.



*The results in this report apply to the samples analyzed in accordance with the chain of custody document. This analytical report must be reproduced in its entirety.*

Jen Pellegrini For Noelle Doyle Mathis, President