

# LEGEND:

- = 90° SYMBOL
- = PROPOSED WELLHEAD.
- = TOP OF PRODUCTION
- = TARGET BOTTOM HOLE.
- = SECTION CORNERS LOCATED.

T10N, R57W, 6th P.M.

2006 Alum. Cap,  
0.6' Below Ground  
Lat: 40.860678°  
Long: 103.804117°

S89°29'32"W - 2517.94' (Meas.)

S89°29'19"W - 2651.74' (Meas.)

2006 Alum. Cap,  
0.9' Below Ground  
Lat: 40.860736°  
Long: 103.795017°

2006 Alum. Cap,  
0.9' Below Ground  
Lat: 40.860797°  
Long: 103.785433°

N00°31'10"W - 2647.68' (Meas.)

LOT 1

LOT 2

LOT 3

LOT 4

NOTE:  
THE PROPOSED TARGET BOTTOM HOLE FOR  
THIS WELL IS LOCATED IN LOT 4 OF  
SECTION 18, T10N, R57W, 6th P.M. AT 100'  
FSL 810' FWL. IT BEARS S00°24'14"E  
7750.65' FROM THE TOP OF PRODUCTION.

**HORSETAIL #07E-1803**

Elev. Graded Ground = 4926.0'

2006 Alum. Cap,  
0.6' Below Ground  
Lat: 40.853414°  
Long: 103.804036°

N01°11'48"W - 2649.08' (Meas.)

LOT 3

LOT 4

Top of Production

2006 Alum. Cap,  
0.1' Below Ground  
Lat: 40.853497°  
Long: 103.785283°

## LINE TABLE

LINE	DIRECTION	LENGTH
L1	S06°45'34"E	296.54'

1917 Brass Cap,  
Fence  
Lat: 40.846147°  
Long: 103.803839°

R  
58  
W

R  
57  
W

S89°44'57"W - 2530.51' (Meas.)

S89°45'37"W - 2652.58' (Meas.)

1917 Brass Cap,  
0.2' High  
Lat: 40.846172°  
Long: 103.794694°

1917 Brass Cap,  
0.4' High  
Lat: 40.846200°  
Long: 103.785111°

Target  
Bottom Hole

PDOP = 1.4



NAD 83 (TOP OF PRODUCTION)	NAD 83 (SURFACE LOCATION)
LATITUDE = 40°51'11.33" (40.853147)	LATITUDE = 40°51'14.24" (40.853956)
LONGITUDE = 103°48'03.30" (103.800917)	LONGITUDE = 103°48'03.75" (103.801042)
NAD 27 (TOP OF PRODUCTION)	NAD 27 (SURFACE LOCATION)
LATITUDE = 40°51'11.38" (40.853161)	LATITUDE = 40°51'14.29" (40.853969)
LONGITUDE = 103°48'01.49" (103.800414)	LONGITUDE = 103°48'01.94" (103.800539)

## BASIS OF BEARINGS

BASIS OF BEARINGS IS A G.P.S. OBSERVATION

## BASIS OF ELEVATION

SPOT ELEVATION LOCATED AT THE NORTHEAST CORNER OF SECTION 15, T9N, R58W, 6th P.M. TAKEN FROM THE GATEHOOK SPRING, QUADRANGLE, COLORADO, WELD COUNTY, 7.5 MINUTE QUAD (TOPOGRAPHIC MAP) PUBLISHED BY THE UNITED STATES DEPARTMENT OF THE INTERIOR, GEOLOGICAL SURVEY. SAID ELEVATION IS MARKED AS BEING 4679 FEET.

## WHITING OIL & GAS CORP.

**HORSETAIL #07E-1803 (SURFACE LOCATION)**  
**LOT 2, SECTION 7, T10N, R57W, 6th P.M.**  
**WELD COUNTY, COLORADO**

SURVEYED BY: DALLAS NIELSEN, J.S.	DATE: 12-12-14
DRAWN BY: K.B.	DATE DRAWN: 12-22-14
SCALE: 1" = 1000'	REVISED: 12-01-15 M.O.E.

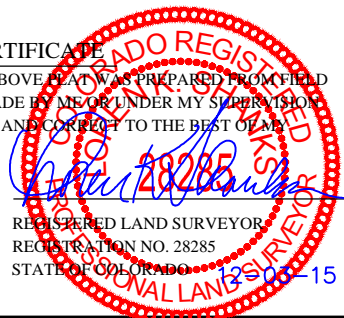
## WELL LOCATION PLAT



**UELS, LLC**  
Corporate Office \* 85 South 200 East  
Vernal, UT 84078 \* (435) 789-1017



CERTIFICATE  
THIS IS TO CERTIFY THAT THE ABOVE PLAT WAS PREPARED FROM FIELD NOTES OF ACTUAL SURVEYS MADE BY ME OR UNDER MY SUPERVISION AND THAT THE SAME ARE TRUE AND CORRECT TO THE BEST OF MY KNOWLEDGE AND BELIEF.



**LEGEND:**

— = 90° SYMBOL

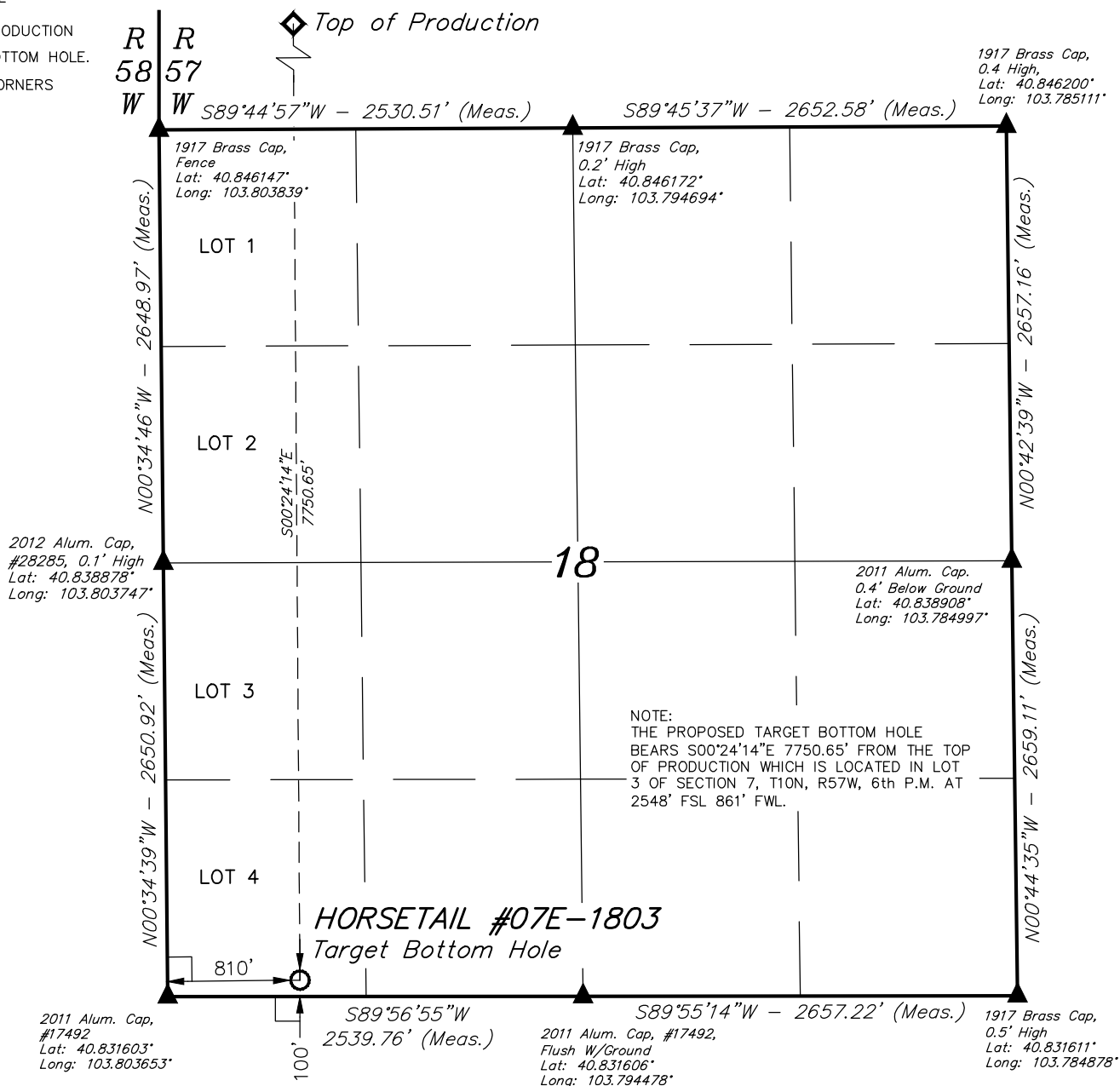
◆ = TOP OF PRODUCTION

○ = TARGET BOTTOM HOLE.

▲ = SECTION CORNERS LOCATED.

# T10N, R57W, 6th P.M.

◆ Top of Production

**NAD 83 (TARGET BOTTOM HOLE)**

LATITUDE = 40°49'54.76" (40.831878)  
LONGITUDE = 103°48'02.63" (103.800731)

**NAD 27 (TARGET BOTTOM HOLE)**

LATITUDE = 40°49'54.81" (40.831892)  
LONGITUDE = 103°48'00.83" (103.800231)

**BASIS OF BEARINGS**

BASIS OF BEARINGS IS A G.P.S. OBSERVATION

**BASIS OF ELEVATION**

SPOT ELEVATION LOCATED AT THE NORTHEAST CORNER OF SECTION 15, T9N, R58W, 6th P.M. TAKEN FROM THE GATEHOOK SPRING, QUADRANGLE, COLORADO, WELD COUNTY, 7.5 MINUTE QUAD (TOPOGRAPHIC MAP) PUBLISHED BY THE UNITED STATES DEPARTMENT OF THE INTERIOR, GEOLOGICAL SURVEY. SAID ELEVATION IS MARKED AS BEING 4679 FEET.



**UELS, LLC**  
Corporate Office \* 85 South 200 East  
Vernal, UT 84078 \* (435) 789-1017

**CERTIFICATE**

THIS IS TO CERTIFY THAT THE ABOVE PLAT WAS PREPARED FROM FIELD NOTES OF ACTUAL SURVEYS MADE BY ME OR UNDER MY SUPERVISION AND THAT THE SAME ARE TRUE AND CORRECT TO THE BEST OF MY KNOWLEDGE AND BELIEF.

REGISTERED LAND SURVEYOR  
REGISTRATION NO. 28285  
STATE OF COLORADO

12-01-15

**WHITING OIL & GAS CORP.**

**HORSETAIL #07E-1803 (TARGET BOTTOM HOLE)**  
**LOT 4, SECTION 18, T10N, R57W, 6th P.M.**  
**WELD COUNTY, COLORADO**

SURVEYED BY: DALLAS NIELSEN, J.S.	DATE: 12-12-14
DRAWN BY: K.B.	DATE DRAWN: 12-22-14
SCALE: 1" = 1000'	REVISED: 12-01-15 M.O.E.
<b>WELL LOCATION PLAT</b>	