

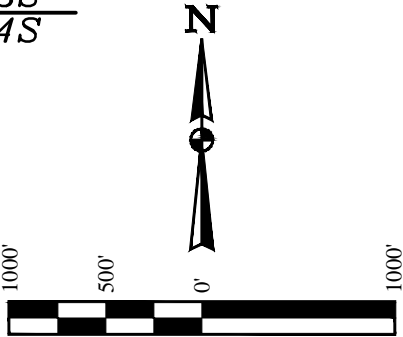
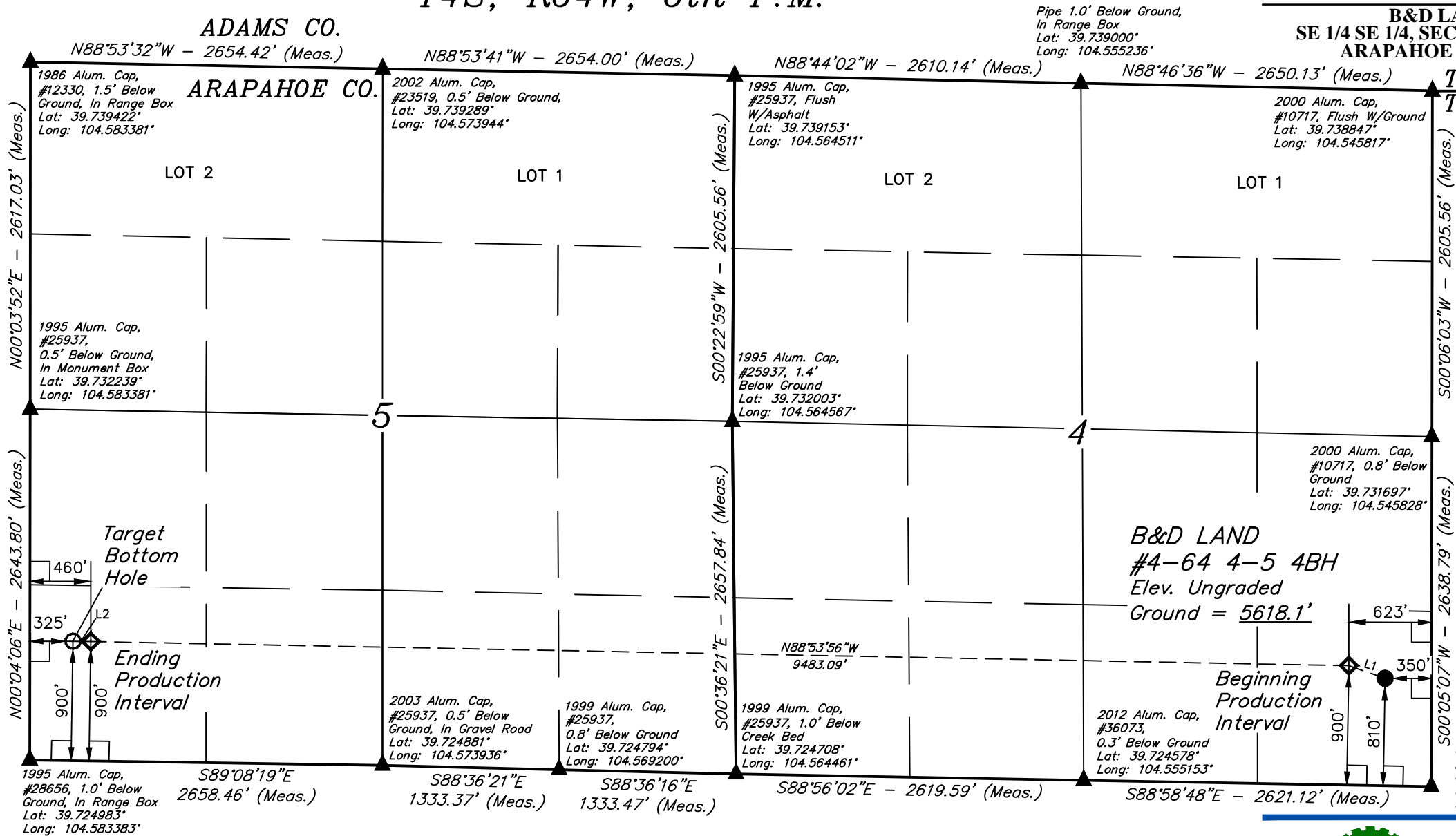
T4S, R64W, 6th P.M.

ADAMS CO.

ARAPAHOE CO.

ConocoPhillips Company

B&D LAND #4-64 4-5 4BH
SE 1/4 SE 1/4, SECTION 4, T4S, R64W, 6th P.M.
ARAPAHOE COUNTY, COLORADO



LINE TABLE		
LINE	DIRECTION	LENGTH
L1	N70°44'35"W	289.02'
L2	N89°08'19"W	135.01'

- LEGEND:
- 90° SYMBOL
 - PROPOSED WELLHEAD.
 - TARGET BOTTOM HOLE.
 - PRODUCTION INTERVAL.
 - SECTION CORNERS LOCATED.

NAD 83 (TARGET BOTTOM HOLE)	NAD 83 (ENDING PRODUCTION INTERVAL)	NAD 83 (BEGINNING PRODUCTION INTERVAL)	NAD 83 (SURFACE LOCATION)
LATITUDE = 39°43'38.79" (39.727442)	LATITUDE = 39°43'38.77" (39.727436)	LATITUDE = 39°43'37.04" (39.726956)	LATITUDE = 39°43'36.10" (39.726694)
LONGITUDE = 104°34'56.02" (104.582228)	LONGITUDE = 104°34'54.29" (104.581747)	LONGITUDE = 104°32'52.98" (104.548050)	LONGITUDE = 104°32'49.49" (104.547081)
NAD 27 (TARGET BOTTOM HOLE)	NAD 27 (ENDING PRODUCTION INTERVAL)	NAD 27 (BEGINNING PRODUCTION INTERVAL)	NAD 27 (SURFACE LOCATION)
LATITUDE = 39°43'38.84" (39.727456)	LATITUDE = 39°43'38.82" (39.727450)	LATITUDE = 39°43'37.09" (39.726969)	LATITUDE = 39°43'36.15" (39.726708)
LONGITUDE = 104°34'54.14" (104.581706)	LONGITUDE = 104°34'52.42" (104.581228)	LONGITUDE = 104°32'51.10" (104.547528)	LONGITUDE = 104°32'47.61" (104.546558)
STATE PLANE NAD 83 (COLORADO CENT.)	STATE PLANE NAD 83 (COLORADO CENT.)	STATE PLANE NAD 83 (COLORADO CENT.)	STATE PLANE NAD 83 (COLORADO CENT.)
N: 1691154.23 E: 3258139.53	N: 1691153.69 E: 3258274.50	N: 1691075.70 E: 3267754.55	N: 1690983.41 E: 3268028.35
STATE PLANE NAD 27 (COLORADO CENT.)	STATE PLANE NAD 27 (COLORADO CENT.)	STATE PLANE NAD 27 (COLORADO CENT.)	STATE PLANE NAD 27 (COLORADO CENT.)
N: 691146.79 E: 2258292.89	N: 691146.25 E: 2258427.86	N: 691068.40 E: 2267907.83	N: 690976.12 E: 2268181.63



UELS, LLC
Corporate Office * 85 South 200 East
Vernal, UT 84078 * (435) 789-1017

SURVEYED BY: DARREN SHANKS, DMS	DATE: 05-29-14
DRAWN BY: K.B.	DATE DRAWN: 06-10-14
SCALE: 1" = 1000'	REVISED: 04-09-15 J.A.

DIRECTIONAL SURVEY SKETCH