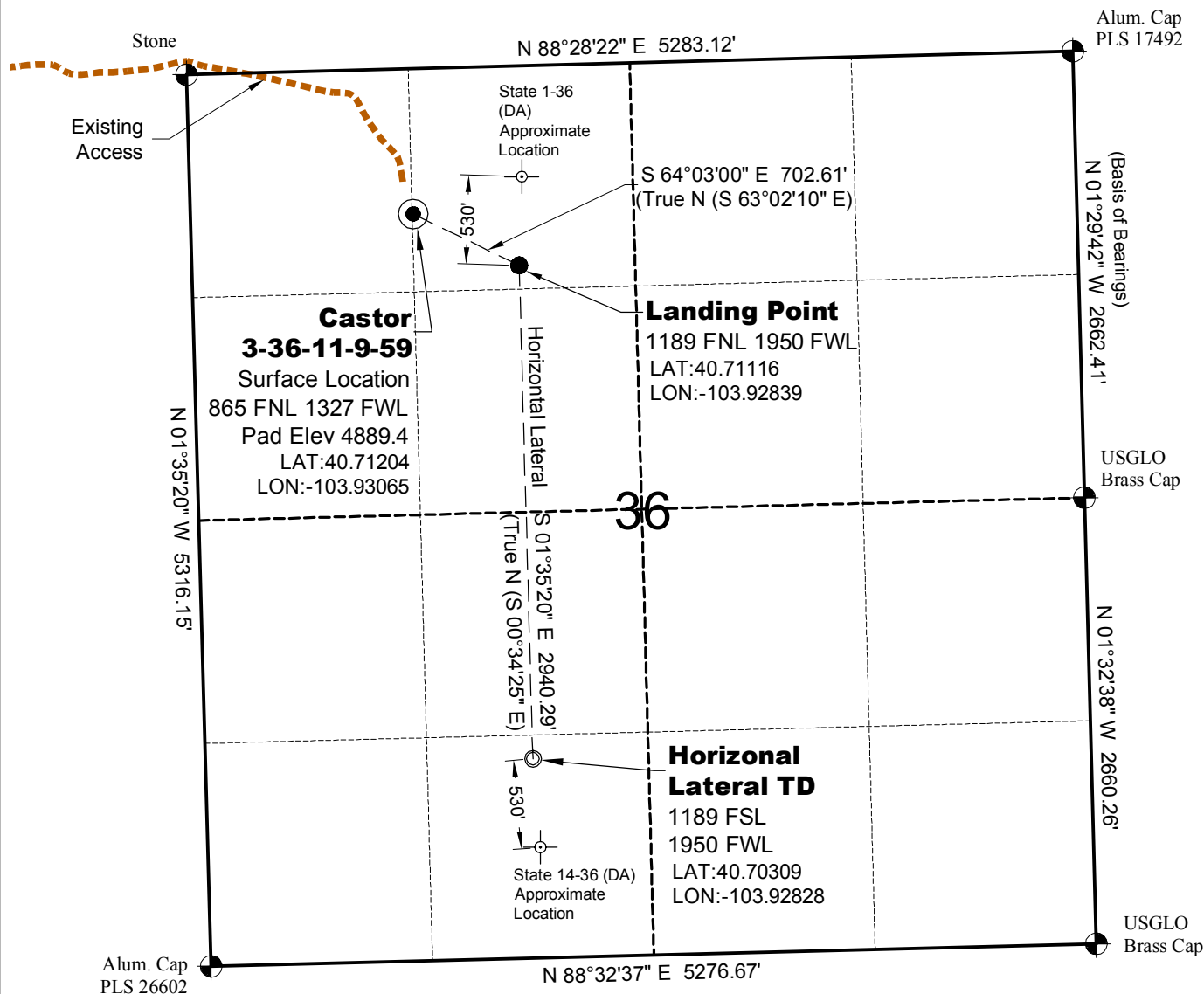


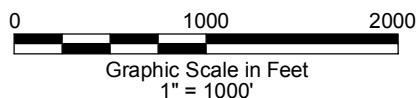
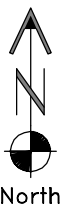
CASTOR  
36-11-9-59 PAD



The undersigned hereby states that the well location shown hereon was staked on the ground based on existing monumentation and/or physical evidence found in the field and is correct to the best of my knowledge, information and belief.

- 1.) Horizontal coordinates based on NGS control point "SNOW" and vertical datum based on NGS control point "G 209" with an elevation of 4955.32. NAVD 1988.
- 2.) All directions, distances, and dimensions shown hereon are based on coordinates from the "Colorado coordinate system of 1983 north zone" (article 52 of title 38, C.R.S.).
- 3.) All section line dimensions shown hereon are based on field measurements of existing monuments and/or physical evidence found in the field unless otherwise indicated. Refer to land survey plats deposited in Weld County.
- 4.) Physical features shown hereon are for graphical representation only.
- 5.) See Form 2A for visible improvements within 400' of wellhead.
- 6.) Distances to nearest section lines are measured perpendicularly.
- 7.) This is not a land survey nor land survey plat.
- 8.) Date of Survey 7/9/12; Date of Drawing 2/25/13. REV 0

PDOP Reading: 1.7 Instrument Operator: Mark Woodard



**LAND SURVEYING AND MAPPING**  
**LAFAYETTE - WINTER PARK**  
**Ph 303 666 0379 Fx 303 665 6320**

**CARRIZO NIOBRARA LLC**  
**CASTOR 3-36-11-9-59**

SL NE1/4 NW1/4 SEC.36 T9N R59W  
HL TD SE1/4 SW1/4 SEC.36 T9N R59W  
6th PM WELD COUNTY COLORADO