



February 19, 2015

Mr. David Blake Ford
Encana Oil & Gas (USA) Inc.
3601 Stagecoach Road North
Longmont, CO 80504

RE: Soil Assessment Report – February 2015
Wandell E Unit #1
SE ¼ SE ¼ SEC.7 T2N R67W 6PM
LAT./LONG.: 40.1484/-104.92729
Weld County, Colorado

Dear Mr. Ford,

Eagle Environmental Consulting, Inc. (EAGLE) is pleased to present this Soil Assessment Report – February 2015 to Encana Oil & Gas (USA) (Encana) for the above referenced site.

1.0 SITE DESCRIPTION

The Wandell E Unit #1 site is located within the Southwest Quarter of the Southwest Quarter of Section 7, Township 2 North, Range 67 West of the 6th Prime Meridian, at latitude: 40.1484 and longitude: -104.92729 in Weld County, Colorado. The Wandell E Unit #1 well has been plugged and abandoned, and all well/tank battery infrastructure has been removed from the site. A site location map is presented as Figure 1.

2.0 SOIL SAMPLING ACTIVITIES

2.1 Field Work Preparation and Planning

The Utility Notification Center of Colorado (UNCC) was called at least 48 hours in advance of soil boring activities to confirm no unmarked utilities or other obstacles were present within the proposed boring locations. Tier II facility owners were also contacted to confirm the necessary buried utility notifications were completed. Each boring location was also cleared to a depth of approximately 5 feet below ground surface (bgs), prior to the advancement of any proposed soil boring, with a pothole or “daylighting” rig, to ensure no unmarked utilities were present beneath the boring location. Prior to any subsurface disturbance activities, a Ground Disturbance Form was completed by Encana and EAGLE.

2.2 Soil Sampling Procedures

On February 6, 2015, EAGLE utilized a Geoprobe 7782DT track rig to advance five soil borings, SB-01 through SB-05, to approximately 10 feet bgs. Based on the observed lithology, sandy clay was observed from approximately 5 to 9 feet bgs. A silty sand was observed from approximately 9 feet bgs through the terminus of each soil boring. Borings logs for SB-01 through SB-05 are included in Attachment A.

Soil samples were collected continuously within 5-foot, plastic sample liners. The samples within the plastic liners were separated in 2.5 foot intervals for soil identification and analysis. A portion from each interval was placed in a sealable plastic bag, for volatile organic compound (VOC) headspace analysis utilizing a field calibrated photoionization detector (PID). Each bag was sealed, labeled, and allowed to

volatilize for approximately five to ten minutes. Another portion of each sample from the same interval was collected in a laboratory supplied, 4-ounce, glass jar, sealed, and placed in an iced cooler for laboratory analysis. After volatilization, each bagged sample was perforated with the probe of a field portable PID, using a 10.6 electron volt (eV) lamp, to measure the organic vapor concentration within the headspace. Organic vapor concentrations were recorded in parts per million by volume (ppm-v) for each sample.

Based on PID readings and sample location, soil samples SB-01@7.5-10', SB-02@7.5-10', SB-03@7.5-10', SB-04@7.5-10', and SB-05@7.5-10' were submitted to Origins Laboratory, Inc. (Origins) located in Denver, Colorado, for analysis of inorganics by Environmental Protection Agency (EPA) Methods SW3050B/6010C (metals), SW7196A (chromium VI), and SW7471 (mercury). The soil samples were also analyzed for VOCs by EPA Method SW8260C, semi-volatile organic compounds (SVOCs) by EPA Methods SW8270D/3541 and SW8015C (hexane and ethylene glycol), and polychlorinated biphenyls (PCBs) by EPA Method SW3541/8082A. In addition, the soil samples were analyzed for pesticides by EPA Methods SW8081B/3451 and SW8151A (herbicides), explosives by EPA Method SW8330, and anions by EPA Methods 300.0 and SW9012B.

The soil samples were submitted to Origins under proper chain-of custody procedures and were received within quality assurance/quality control (QA/QC) parameters. Upon completion of soil sampling activities, each soil boring was abandoned with 10/20 silica sand and bentonite to grade. EAGLE recorded spatial locations of soil borings, SB-01 through SB-05, using a Trimble GeoXT 6000 series instrument. The locations are included on the soil sample location map presented as Figure 2.

2.3 Soil Analytical Results

Based on laboratory analytical results, the soil samples collected from SB-01@7.5-10', SB-02@7.5-10', SB-03@7.5-10', SB-04@7.5-10', and SB-05@7.5-10' contained arsenic concentrations exceeding the Colorado Oil and Gas Conservation Commission (COGCC) Table 910-1 regulatory limit of 0.39 milligrams per kilogram (mg/kg) with concentrations ranging from 1.16 mg/kg (SB-05@7.5-10') to 5.05 (SB-03@7.5-10').

Arsenic is naturally occurring in some geologic environments within Colorado due to the weathering and erosion of bedrock and soil. The Colorado Department of Public Health and Environment (CDPHE) developed a Risk Management Guidance Document for Evaluating Arsenic Concentrations in Soil, which was revised in July 2014. During the study conducted by the EPA, the average concentration of arsenic observed in Colorado soils was 11 mg/kg. Based on the average concentration of arsenic listed in the guidance document provided by the CDPHE and the arsenic concentrations observed within the soil samples collected beneath the site, arsenic is not a chemical of concern to the site at this time.

The soil samples collected from SB-01@7.5-10', SB-02@7.5-10', SB-03@7.5-10', SB-04@7.5-10', and SB-05@7.5-10' did not contain concentrations of VOCs, SVOCs, PCBs, pesticides, explosives, anions, or remaining inorganics analyzed, exceeding their respective CDPHE – Groundwater Protection Values Soil Cleanup or COGCC Table 910-1 regulatory limits.

Soil analytical results are summarized in Table 1. The laboratory analytical report is included in Attachment B.

3.0 CONCLUSIONS

Based on the information described in this report, EAGLE concludes the following:

- Based on the CDPHE Risk Management Guidance Document for Evaluating Arsenic Concentrations in Soil, the arsenic concentrations observed within soil samples SB-01@7.5-10', SB-02@7.5-10', SB-03@7.5-10', SB-04@7.5-10', and SB-05@7.5-10' exceeding the COGCC Table 910-1 regulatory limit, are not a chemical of concern to the site at this time.
- Soil samples SB-01@7.5-10', SB-02@7.5-10', SB-03@7.5-10', SB-04@7.5-10', and SB-05@7.5-10', collected on February 6, 2015 did not contain concentrations of VOCs, SVOCs, PCBs, pesticides, explosives, anions, or remaining inorganics analyzed, exceeding their respective CDPHE – Groundwater Protection Values Soil Cleanup or COGCC Table 910-1 regulatory limits.

4.0 RECOMMENDATIONS

Based on the information described in this report, EAGLE concludes the following:

- Additional assessment activities do not appear warranted at this time.

EAGLE sincerely appreciates the opportunity to provide our services. If you have any questions or require further information, please contact me at (303) 433-0479.

Sincerely,

EAGLE ENVIRONMENTAL CONSULTING, INC.



Daniel Coloccia
Project Scientist

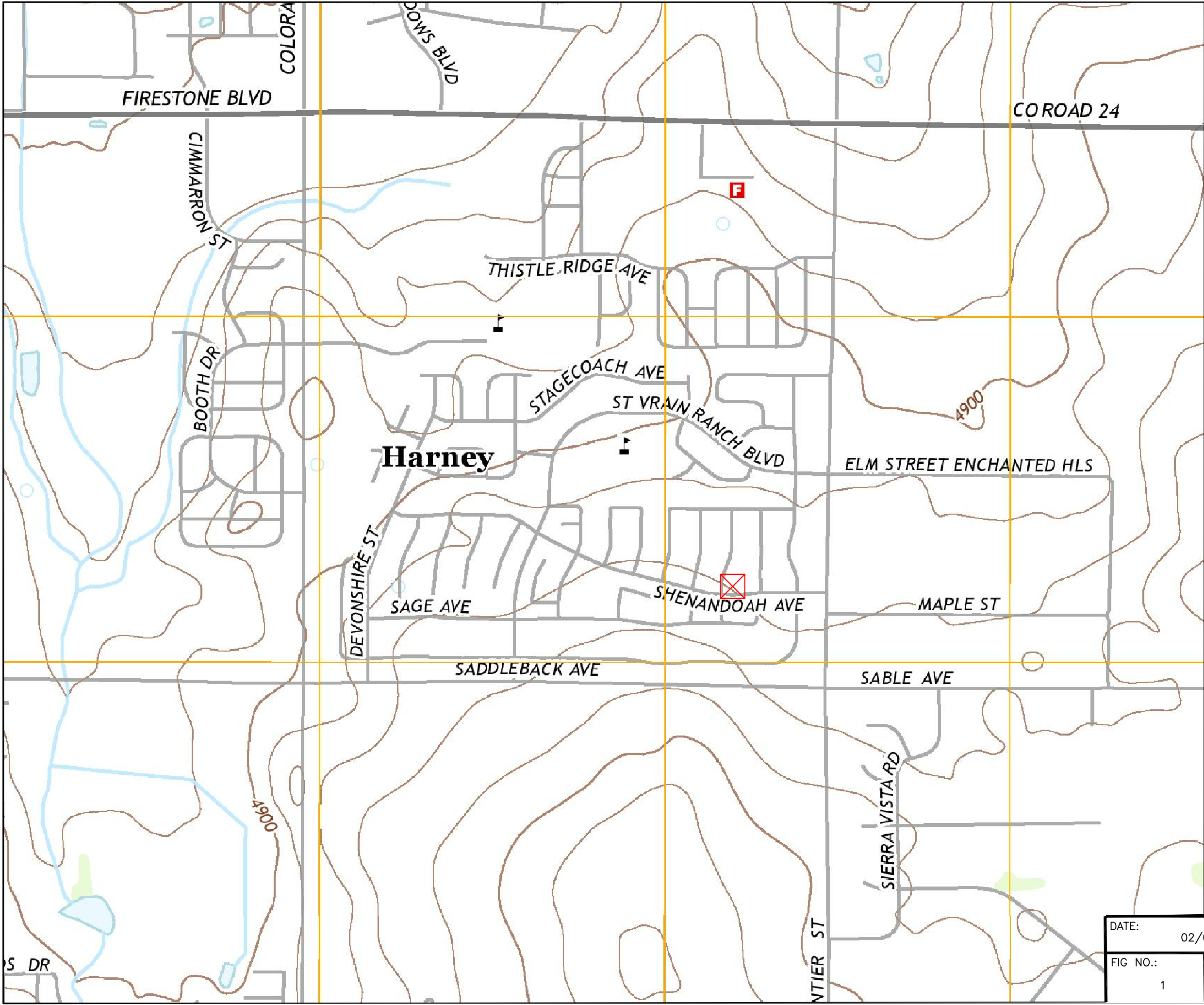


Martin Eckert III
Senior Project Manager

FIGURES

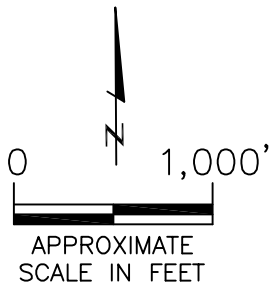
Figure 1: Site Location Map

Figure 2: Soil Sample Location Map



LEGEND
[Red X] APPROXIMATE SITE LOCATION

NOTE: TOPOGRAPHIC MAP OBTAINED FROM U.S. DEPARTMENT OF THE INTERIOR – U.S. GEOLOGICAL SURVEY, GOWANDA QUADRANGLE – COLORADO WELD CO., 7.5-MINUTE SERIES.

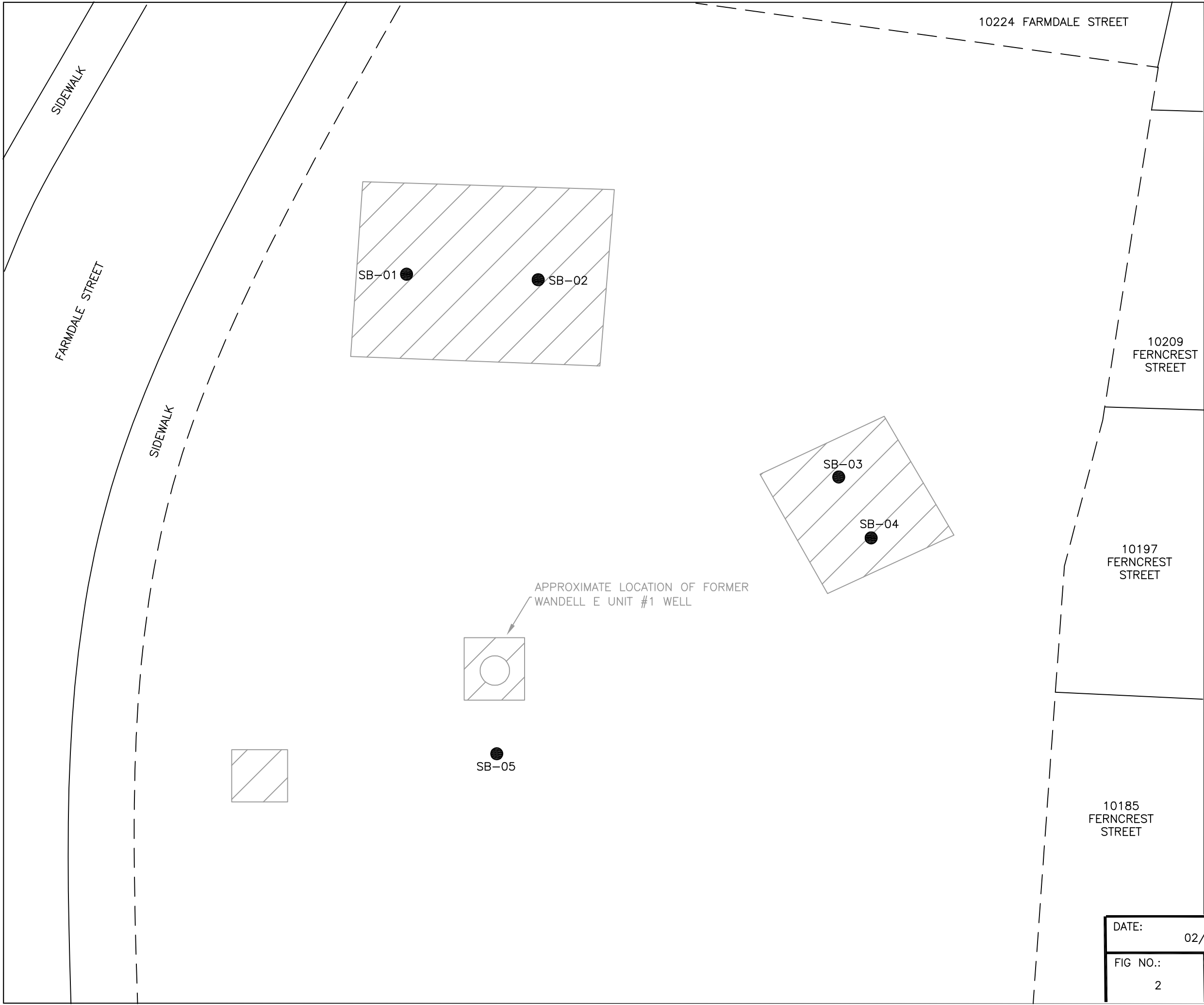


SITE LOCATION MAP
WANDELL E UNIT #1
SE¼SE¼ SEC.7 T2N R67W 6PM
LAT./LONG.: 40.1484/-104.92729
WELD COUNTY, COLORADO

DATE:	02/03/15
FIG NO.:	1
DRAWN BY:	dc

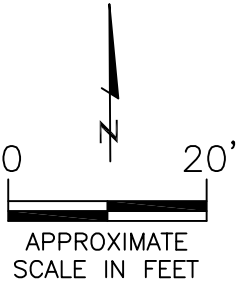


EAGLE
ENVIRONMENTAL
CONSULTING, INC.
4101 INCA STREET, DENVER, CO 80211
Ph: 303-433-0479 • F: 303-325-5449



LEGEND

- APPROXIMATE SOIL BORING LOCATION
- - - APPROXIMATE FENCE LOCATION
- ▨ APPROXIMATE LOCATION OF FORMER WANDELL E UNIT #1 TANK BATTERY EQUIPMENT



SOIL SAMPLE LOCATION MAP
WANDELL E UNIT #1
SE¼SE¼ SEC.7 T2N R67W 6PM
LAT./LONG.: 40.1484/-104.92729
WELD COUNTY, COLORADO

DATE:	02/16/15
FIG NO.:	2
DRAWN BY:	dc



EAGLE
ENVIRONMENTAL
CONSULTING, INC.
4101 INCA STREET, DENVER, CO 80211
Ph: 303-433-0479 • F: 303-325-5449

TABLE

Table 1: Soil Analytical Results Summary

TABLE 1
SOIL ANALYTICAL RESULTS SUMMARY
WANDELL E UNIT #1
SE 1/4 SE 1/4 SEC.7 T2N R67W 6PM
LAT./LONG.: 40.1484 / -104.92729
WELD COUNTY, COLORADO

Parameter	CDPHE Groundwater Protection Values Soil Cleanup	COGCC Table 910-1 Regulatory Limits	Units	Sample Location				
				SB-01	SB-02	SB-03	SB-04	SB-05
Sample Date				02/06/15	02/06/15	02/06/15	02/06/15	02/06/15
Sample Depth			feet	7.5-10'	7.5-10'	7.5-10'	7.5-10'	7.5-10'
Latitude, Longitude			decimal degrees	40.148628, -104.927329	40.148629, -104.927237	40.148526, -104.927015	40.148491, -104.926973	40.148350, -104.927256
INORGANICS								
Aluminum	NA	NA	mg/kg	3,710	5,590	7,280	7,060	1,460
Antimony	NA	NA	mg/kg	0.563	<1.05	>1.31	1.18	0.724
Arsenic	NA	0.39	mg/kg	2.32	2.53	5.05	4.13	1.16
Barium	NA	15,000	mg/kg	53.9	59.8	59.8	80.8	23.9
Beryllium	NA	NA	mg/kg	0.317	0.459	0.535	0.570	0.119
Cadmium	NA	70	mg/kg	<0.554	0.107	<0.654	<0.535	<0.521
Chromium (III)	NA	120,000	mg/kg	9.26	18.8	11.3	15.2	1.98
Chromium (VI)	NA	23	mg/kg	<0.452	0.202	0.252	0.241	0.290
Cobalt	NA	NA	mg/kg	2.53	4.38	4.62	5.4	0.848
Copper	NA	3,100	mg/kg	5.54	9.42	10.4	11.4	2.07
Iron	NA	NA	mg/kg	8,490	15,800	14,000	14,300	2,320
Lead	NA	400	mg/kg	5.70	6.90	18.1	10.2	4.05
Manganese	NA	NA	mg/kg	88.9	159	155	200	18.0
Mercury	NA	23	mg/kg	0.00891	0.00468	0.0188	0.0152	<0.0129
Nickel	NA	1,600	mg/kg	4.57	7.96	9.35	9.25	1.42
Selenium	NA	390	mg/kg	<3.32	<15.8	<3.92	<16.1	<3.13
Silver	NA	390	mg/kg	<0.554	<0.525	<0.654	<0.535	<0.521
Thallium	NA	NA	mg/kg	<2.21	<2.10	<2.62	<2.14	<2.08
Vanadium	NA	NA	mg/kg	14.7	31.9	22.9	27.7	4.50
Zinc	NA	23,000	mg/kg	31.0	28.0	40.8	34.6	9.06
VOCs								
1,1,1,2-Tetrachloroethane	0.16	NA	mg/kg	<0.00227	<0.00221	<0.00282	<0.00221	<0.0022
1,1,1-Trichloroethane	62	NA	mg/kg	<0.00227	<0.00221	<0.00282	<0.00221	<0.0022
1,1,2,2-Tetrachloroethane	0.0024	NA	mg/kg	<0.00227	<0.00221	<0.00282	<0.00221	<0.0022
1,1,2-Trichloroethane	0.038	NA	mg/kg	<0.00227	<0.00221	<0.00282	<0.00221	<0.0022
1,1-Dichloroethene	1.80	NA	mg/kg	<0.00227	<0.00221	<0.00282	<0.00221	<0.0022
1,1-Dichloroethylene	12	NA	mg/kg	<0.00227	<0.00221	<0.00282	<0.00221	<0.0022
1,2,3-Trichloropropane	0.00048	NA	mg/kg	<0.00227	<0.00221	<0.00282	<0.00221	<0.0022
1,2,4-Trichlorobenzene	13	NA	mg/kg	<0.378	<0.368	<2.35	<0.369	<0.366
1,2-Dibromo-3-chloropropane	0.002	NA	mg/kg	<0.00227	<0.00221	<0.00282	<0.00221	<0.0022
1,2-Dibromoethane	0.00018	NA	mg/kg	<0.00227	<0.00221	<0.00282	<0.00221	<0.0022
1,2-Dichlorobenzene	57	NA	mg/kg	<0.00227	<0.368	<2.35	<0.369	<0.366
1,2-Dichloroethane	0.0036	NA	mg/kg	<0.00227	<0.00221	<0.00282	<0.00221	<0.0022
1,2-Dichloropropane	0.0087	NA	mg/kg	<0.00227	<0.00221	<0.00282	<0.00221	<0.0022
1,3,5-Trimethylbenzene	23	NA	mg/kg	<0.00227	<0.00221	<0.00282	<0.00221	<0.0022
1,3-Dichlorobenzene	0.85	NA	mg/kg	<0.00227	<0.00221	<0.00282	<0.00221	<0.0022
1,4-Dichlorobenzene	7.80	NA	mg/kg	<0.00227	<0.00221	<0.00282	<0.00221	<0.0022
1-Methylnaphthalene	0.81	NA	mg/kg	<0.0378	<0.0368	<0.235	<0.0369	<0.0366
2-Butanone	18	NA	mg/kg	<0.0113	<0.0111	<0.0141	<0.0111	<0.011
2-Chlorophenol	1.20	NA	mg/kg	<0.378	<0.368	<2.35	<0.369	<0.366
2-Hexanone	0.21	NA	mg/kg	<0.0113	<0.0111	<0.0141	<0.0111	<0.011
2-Methylnaphthlene	7.40	NA	mg/kg	<0.0378	<0.0368	<0.235	<0.0369	<0.0366
4-Methyl-2-pentanone	3.30	NA	mg/kg	<0.0113	<0.0111	<0.0141	<0.0111	<0.011
Acenaphthene	1,000	1,000	mg/kg	<0.0378	<0.0368	<0.235	<0.0369	<0.0366
Acetone	32	NA	mg/kg	<0.0113	<0.0111	<0.0141	<0.0111	<0.011
Anthracene	1,000	1,000	mg/kg	<0.0378	<0.0368	<0.235	<0.0369	<0.0366
Benzene	0.17	0.17	mg/kg	<0.00227	<0.00221	<0.00282	<0.00221	<0.0022
Bis(2-chloroisopropyl)ether	0.037	NA	mg/kg	<0.378	<0.368	<2.35	<0.369	<0.366
Bromobenzene	3	NA	mg/kg	<0.00227	<0.00221	<0.00282	<0.00221	<0.0022
Bromodichloromethane	0.007	NA	mg/kg	<0.00227	<0.00221	<0.00282	<0.00221	<0.0022
Bromomethane	0.16	NA	mg/kg	<0.00227	<0.00221	<0.00282	<0.00221	<0.0022
Carbon disulfide	1,000	NA	mg/kg	<0.0113	<0.0111	<0.0141	<0.0111	<0.011
Carbon tetrachloride	1,704	NA	mg/kg	<0.00227	<0.00221	<0.00282	<0.00221	<0.0022
Chlorobenzene	5.30	NA	mg/kg	<0.00227	<0.00221	<0.00282	<0.00221	<0.0022

TABLE 1
SOIL ANALYTICAL RESULTS SUMMARY
WANDELL E UNIT #1
SE 1/4 SE 1/4 SEC.7 T2N R67W 6PM
LAT./LONG.: 40.1484 / -104.92729
WELD COUNTY, COLORADO

Parameter	CDPHE Groundwater Protection Values Soil Cleanup	COGCC Table 910-1 Regulatory Limits	Units	Sample Location				
				SB-01	SB-02	SB-03	SB-04	SB-05
Sample Date				02/06/15	02/06/15	02/06/15	02/06/15	02/06/15
Sample Depth			feet	7.5'-10'	7.5'-10'	7.5'-10'	7.5'-10'	7.5'-10'
Latitude, Longitude			decimal degrees	40.148628, -104.927329	40.148629, -104.927237	40.148526, -104.927015	40.148491, -104.926973	40.148350, -104.927256
Chloroform	0.085	NA	mg/kg	<0.00227	<0.00221	<0.00282	<0.00221	<0.0022
cis-1,2-Dichloroethene	0.261	NA	mg/kg	<0.00227	<0.00221	<0.00282	<0.00221	<0.0022
Dibenzofuran	4.10	NA	mg/kg	<0.378	<0.368	<2.35	<0.369	<0.366
Dibromochloromethane	0.11	NA	mg/kg	<0.00227	<0.00221	<0.00282	<0.00221	<0.0022
Dichlorodifluoromethane	390	NA	mg/kg	<0.00227	<0.00221	<0.00282	<0.00221	<0.0022
Ethylbenzene	100	100	mg/kg	<0.00227	<0.00221	<0.00282	<0.00221	<0.0022
Fluorene	1,000	1,000	mg/kg	<0.0378	<0.0368	<0.235	<0.0369	<0.0366
Hexane	100,000	NA	µg/kg	<54400	<54400	<57600	<54700	<46500
Methyl chloride	0.06	NA	mg/kg	<0.00567	<0.00554	<0.00704	<0.00553	<0.00549
Naphthalene	23	23	mg/kg	<0.0378	<0.0368	<0.235	<0.0369	<0.0366
Nitrobenzene	0.239	NA	mg/kg	<0.378	<0.368	<2.35	<0.369	<0.366
n-Propylbenzene	77	NA	mg/kg	<0.00227	<0.00221	<0.00282	<0.00221	<0.0022
Styrene	14	NA	mg/kg	<0.00227	<0.00221	<0.00282	<0.00221	<0.0022
Tetrachloroethylene	1.90	NA	mg/kg	<0.00227	<0.00221	<0.00282	<0.00221	<0.0022
Toluene	50	85	mg/kg	<0.00227	<0.00221	<0.00282	<0.00221	<0.0022
Xylenes (total)	75	NA	mg/kg	<0.0068	<0.00664	<0.00845	<0.00664	<0.00659
trans-1,2-Dichloroethene	5.40	NA	mg/kg	<0.00227	<0.00221	<0.00282	<0.00221	<0.0022
Trichloroethylene	0.68	NA	mg/kg	<0.00227	<0.00221	<0.00282	<0.00221	<0.0022
Trichlorofluoromethane	1,000	NA	mg/kg	<0.00227	<0.00221	<0.00282	<0.00221	<0.0022
Vinyl acetate	51	NA	mg/kg	<0.00567	<0.00554	<0.00704	<0.00553	<0.00549
Vinyl chloride	0.11	NA	mg/kg	<0.00227	<0.00221	<0.00282	<0.00221	<0.0022
SVOCs								
1,4-Dioxane	0.0016	NA	mg/kg	<0.378	<0.368	<2.35	<0.369	<0.366
2,4,5-Trichlorophenol	88	NA	mg/kg	<0.378	<0.368	<2.35	<0.369	<0.366
2,4,6-Trichlorophenol	0.28	NA	mg/kg	<0.378	<0.368	<2.35	<0.369	<0.366
2,4-Dichlorophenol	0.33	NA	mg/kg	<0.378	<0.368	<2.35	<0.369	<0.366
2,4-Dimethylphenol	2.70	NA	mg/kg	<0.378	<0.368	<2.35	<0.369	<0.366
2,4-Dinitrophenol	0.40	NA	mg/kg	<0.755	<0.736	<2.35	<0.737	<0.732
3,3'-Dichlorobenzidine	0.041	NA	mg/kg	<0.378	<0.368	<2.35	<0.369	<0.366
4-Nitrophenol	2.10	NA	mg/kg	<0.378	<0.368	<2.35	<0.369	<0.366
Benzo[a]anthracene	1,000	0.22	mg/kg	<0.0378	<0.0368	<0.235	<0.0369	<0.0366
Benzo[a]pyrene	1,000	NA	mg/kg	<0.0378	<0.0368	<0.235	<0.0369	<0.0366
Benzo[b]fluoranthene	1,000	0.22	mg/kg	<0.0378	<0.0368	<0.235	<0.0369	<0.0366
Benzo[k]fluoranthene	1,000	2.20	mg/kg	<0.0378	<0.0368	<0.235	<0.0369	<0.0366
Benzoic acid	110	NA	mg/kg	<0.755	<0.736	<4.69	<0.737	<0.732
Benzyl alcohol	3.90	NA	mg/kg	<0.378	<0.368	<2.35	0.246	<0.366
Bis(2-ethylhexyl)phthalate	1,000	NA	mg/kg	<0.378	<0.368	<2.35	<0.0369	<0.366
Bromoform	0.048	NA	mg/kg	<0.00227	<0.00221	<0.00282	<0.00221	<0.0022
Butyl benzyl phthalate	1,000	NA	mg/kg	<0.378	<0.368	<2.35	<0.369	<0.366
Chlordane	1,000	NA	mg/kg	<0.00942	<0.00918	<0.0117	<0.00918	<0.00912
Chrysene	1,000	2.20	mg/kg	<0.0378	<0.0368	<0.235	<0.0369	<0.0366
Dibenzo[a,h]anthracene	1,000	0.022	mg/kg	<0.0378	<0.0368	<0.235	<0.0369	<0.0366
Diethyl phthalate	140	NA	mg/kg	<0.378	<0.368	<2.35	<0.369	<0.366
Di-N-Butyl phthalate	1,000	NA	mg/kg	<0.378	<0.368	<2.35	<0.369	<0.366
Ethylene glycol	0.07	NA	mg/kg	<16.4	<47.0	<61.5	<49.9	<51.1
Fluoranthene	1,000	1,000	mg/kg	<0.0378	<0.0368	<0.235	<0.0369	<0.0366
Hexachlorobenzene	0.009	NA	mg/kg	<0.378	<0.368	<2.35	<0.369	<0.366
Hexachlorobutadiene	0.17	NA	mg/kg	<0.378	<0.368	<2.35	<0.369	<0.366
Hexachlorocyclopentadiene	1,000	NA	mg/kg	<0.378	<0.368	<2.35	<0.369	<0.366
Hexachloroethane	0.019	NA	mg/kg	<0.378	<0.368	<2.35	<0.369	<0.366
Indeno[1,2,3-cd]pyrene	1,000	0.22	mg/kg	<0.0378	<0.0368	<0.235	<0.0369	<0.0366
N-nitrosodimethylamine	0.000005	NA	mg/kg	<0.378	<0.368	<2.35	<0.369	<0.366
N-Nitroso-di-n-propylamine	0.00000028	NA	mg/kg	<0.378	<0.368	<2.35	<0.369	<0.366
Pentachlorophenol	0.021	NA	mg/kg	<0.378	<0.368	<2.35	<0.369	<0.366
Phenol	0.47	NA	mg/kg	<0.378	<0.368	<2.35	<0.369	<0.366
Pyrene	1,000	1,000	mg/kg	<0.0378	<0.0368	<0.235	<0.0369	<0.0366
Pyridine	0.38	NA	mg/kg	<0.378	<0.368	<2.35	<0.369	<0.366

TABLE 1
SOIL ANALYTICAL RESULTS SUMMARY
WANDELL E UNIT #1
SE 1/4 SE 1/4 SEC.7 T2N R67W 6PM
LAT./LONG.: 40.1484 / -104.92729
WELD COUNTY, COLORADO

Parameter	CDPHE Groundwater Protection Values Soil Cleanup	COGCC Table 910-1 Regulatory Limits	Units	Sample Location				
				SB-01	SB-02	SB-03	SB-04	SB-05
Sample Date				02/06/15	02/06/15	02/06/15	02/06/15	02/06/15
Sample Depth			feet	7.5-10'	7.5-10'	7.5-10'	7.5-10'	7.5-10'
Latitude, Longitude			decimal degrees	40.148628, -104.927329	40.148629, -104.927237	40.148526, -104.927015	40.148491, -104.926973	40.148350, -104.927256
PCBs								
Aroclor 1016	1,000	NA	mg/kg	<0.00377	<0.00368	<0.00469	<0.00368	<0.00366
Aroclor 1254	1,000	NA	mg/kg	<0.00377	<0.00368	<0.00469	<0.00368	<0.00366
Aroclor 1260	1,000	NA	mg/kg	<0.00377	<0.00368	<0.00469	<0.00368	<0.00366
PCBs	1,000	NA	mg/kg	<0.00377	<0.00368	<0.00469	<0.00368	<0.00366
PESTICIDES								
2,4,5-T	0.54	NA	mg/kg	<0.00567	<0.00553	<0.00704	<0.00553	<0.00549
2,4,5-TP	0.48	NA	mg/kg	<0.00567	<0.00553	<0.00704	<0.00553	<0.00549
2,4-D	2.50	NA	mg/kg	<0.00567	<0.00553	<0.00704	<0.00553	<0.00549
2,4-DB	2.10	NA	mg/kg	<0.00567	<0.00553	<0.00704	<0.00553	<0.00549
4,4'-DDD	1,000	NA	mg/kg	<0.00151	<0.00147	<0.00187	<0.00147	<0.00146
4,4'-DDE	1,000	NA	mg/kg	<0.00151	<0.00147	<0.00187	<0.00147	<0.00146
4,4'-DDT	1,000	NA	mg/kg	<0.00151	<0.00147	<0.00187	<0.00147	<0.00146
Aldrin	1,000	NA	mg/kg	<0.000754	<0.000735	<0.000935	<0.000735	<0.000729
alpha-BHC	0.0017	NA	mg/kg	<0.000754	<0.000735	<0.000935	<0.000735	<0.000729
beta-BHC	0.046	NA	mg/kg	<0.000754	<0.000735	<0.000935	<0.000735	<0.000729
Dalapon	1.10	NA	mg/kg	<0.113	<0.111	<0.141	<0.111	<0.110
Dieldrin	1,000	NA	mg/kg	<0.000151	<0.00147	<0.00187	<0.00147	<0.00146
Dinoseb	0.62	NA	mg/kg	<0.00567	<0.00553	<0.00704	<0.00553	<0.00549
Endosulfan I	1,000	NA	mg/kg	<0.000754	<0.000735	<0.000935	<0.000735	<0.000729
Endosulfan II	1,000	NA	mg/kg	<0.000151	<0.00147	<0.00187	<0.00147	<0.00146
Endosulfan Sulfate	1,000	NA	mg/kg	<0.000151	<0.00147	<0.00187	<0.00147	<0.00146
Endrin	1,000	NA	mg/kg	<0.000151	<0.00147	<0.00187	<0.00147	<0.00146
Endrin aldehyde	4.90	NA	mg/kg	<0.000151	<0.00147	<0.00187	<0.00147	<0.00146
gamma-BHC (Lindane)	0.017	NA	mg/kg	<0.000754	<0.000735	<0.000935	<0.000735	<0.000729
Heptachlor	1,000	NA	mg/kg	<0.000754	<0.000735	<0.000935	<0.000735	<0.000729
Heptachlor epoxide	1,000	NA	mg/kg	<0.000754	<0.000735	<0.000935	<0.000735	<0.000729
Isophorone	1.30	NA	mg/kg	<0.378	<0.368	<2.35	<0.369	<0.366
MCPA	0.028	NA	mg/kg	<1.13	<1.11	<1.41	<1.11	<1.10
MCPP	0.054	NA	mg/kg	<1.13	<1.11	<1.41	<1.11	<1.10
Methoxychlor	1,000	NA	mg/kg	<0.00754	<0.00735	<0.00935	<0.00735	<0.00729
Toxaphene	1,000	NA	mg/kg	<0.0188	<0.0184	<0.0234	<0.0184	<0.0182
EXPLOSIVES								
2,4,6-Trinitrotoluene	1700	NA	µg/kg	<149	<149	<149	<150	<149
2,4-Dinitrotoluene	3.2	NA	µg/kg	<149	<149	<149	<150	<149
2,6-Dinitrotoluene	200	NA	µg/kg	<149	<149	<149	<150	<149
2-Amino-4,6-dinitrotoluene	160	NA	µg/kg	<149	<149	<149	<150	<149
4-Amino-2,6-dinitrotoluene	160	NA	µg/kg	<149	<149	<149	<150	<149
4-Nitrotoluene	590	NA	µg/kg	<149	<149	<149	<150	<149
Tetryl	600	NA	µg/kg	<149	<149	<149	<150	<149
ANIONS								
Cyanide	NA	NA	µg/kg	<186	<261	<251	<203	<259
Nitrate	NA	NA	mg/kg	18.3	13.3	2.42	16.3	1.84
Nitrite	NA	NA	mg/kg	<1.13	<1.11	<1.41	0.448	<1.10

CDPHE = Colorado Department of Public Health and Environment
COGCC = Colorado Oil and Gas Conservation Commission
mg/kg = milligram per kilogram
VOCs = volatile organic compounds
ug/kg = microgram per kilogram
ug/g = microgram per gram
SVOCs = semi-volatile organic compounds
PCBs = polychlorinated biphenyls
NA = not applicable

ATTACHMENT A

Boring Logs

Boring Log/Well Completion Diagram: SB-01

PAGE 1 OF 1

DEPTH (FT)	LITHOLOGY	SAMPLE				OVM/OVA (PPM)	BLOW COUNT (per 0.5 FT)	DEPTH (FT)	WELL CONSTRUCTION DETAIL	COMMENTS
	DESCRIPTION	GRAPHIC LOG	TYPE	NUMBER	RECOVERY %					
0	0-5 - Potholed									
5	sandy CLAY - brown, medium stiff, moderate plasticity, poorly sorted with approx. 20% fine-grained sand, moist, N/O, N/S	CL	GP	1	90	0.0	N/A	5		
10	silty SAND - light brown to brown, fine to medium grained, poorly sorted with approx. 25% silt, moist, N/O, N/S	SM				0.0		10		
10	BoB @ 10'									
15										
20										
25										
30										

HC - Hydrocarbon
BoB - Bottom of Boring
N/O - no odor
N/S - no staining
TOC - top of casing
bgs - below ground surface

START/COMPLETION DATE: 02/06/2015

SAND PACK INTERVAL (FEET): ~4-10

PROJECT: WANDELL E UNIT #1

BENTONITE/GROUT INTERVAL (FEET): ~0-4'

LOGGED BY: D. COLOCCIA

WELL SCREEN INTERVAL (FEET): N/A

DRILLING COMPANY/EQUIPMENT: EEC/GEOPROBE 7822 DT

WELL DIAMETER (INCHES): N/A

BORING DEPTH (FEET): 10

WELL DEPTH (FEET): N/A

PID INSTRUMENT: MiniRAE 2000

TIME STARTED/COMPLETED: 0855/0915

SAMPLE COLLECTION DEPTH (FEET)/TIME: 7.5-10/0915



EAGLE
ENVIRONMENTAL
CONSULTING, INC.

4101 INCA STREET, DENVER, CO 80211
Ph: 303-433-0479 • F: 303-325-5449

Boring Log/Well Completion Diagram: SB-02

PAGE 1 OF 1

DEPTH (FT)	LITHOLOGY	SAMPLE				OVM/OVA (PPM)	BLOW COUNT (per 0.5 FT)	DEPTH (FT)	WELL CONSTRUCTION DETAIL	COMMENTS
	DESCRIPTION	GRAPHIC LOG	TYPE	NUMBER	RECOVERY %					
0	0-5 - Potholed									
5	sandy CLAY - brown, medium stiff, moderate plasticity, poorly sorted with approx. 15% fine-grained sand, moist, N/O, N/S	CL	GP	1	100	0.0	N/A	5		
10	9-10 silty SAND - light brown to brown, fine to medium grained, poorly sorted with approx. 30% silt, moist, N/O, N/S	SM				0.0		10		
	BoB @ 10'									
15								15		
20								20		
25								25		
30										

HC - Hydrocarbon
BoB - Bottom of Boring
N/O - no odor
N/S - no staining
TOC - top of casing
bgs - below ground surface

START/COMPLETION DATE: 02/06/2015

SAND PACK INTERVAL (FEET): ~4-10

PROJECT: WANDELL E UNIT #1

BENTONITE/GROUT INTERVAL (FEET): ~0-4'

LOGGED BY: D. COLOCCIA

WELL SCREEN INTERVAL (FEET): N/A

DRILLING COMPANY/EQUIPMENT: EEC/GEOPROBE 7822 DT

WELL DIAMETER (INCHES): N/A

BORING DEPTH (FEET): 10

WELL DEPTH (FEET): N/A

PID INSTRUMENT: MiniRAE 2000

TIME STARTED/COMPLETED: 0920/0945

SAMPLE COLLECTION DEPTH (FEET)/TIME: 7.5-10/0945



EAGLE
ENVIRONMENTAL
CONSULTING, INC.

4101 INCA STREET, DENVER, CO 80211
Ph: 303-433-0479 • F: 303-325-5449

Boring Log/Well Completion Diagram: SB-03

PAGE 1 OF 1

DEPTH (FT)	LITHOLOGY	SAMPLE				OVM/OVA (PPM)	BLOW COUNT (per 0.5 FT)	DEPTH (FT)	WELL CONSTRUCTION DETAIL	COMMENTS
	DESCRIPTION	GRAPHIC LOG	TYPE	NUMBER	RECOVERY %					
0	0-5 - Potholed									
5	sandy CLAY - brown, medium stiff, moderate plasticity, poorly sorted with approx. 20% fine-grained sand, moist, N/O, N/S	CL	GP	1	100	0.0	N/A	5		
	silty SAND - light brown to brown, fine to medium grained, poorly sorted with approx. 30% silt, moist, N/O, N/S	SM				0.0				
10	BoB @ 10'							10		
15								15		
20								20		
25								25		
30										HC - Hydrocarbon BoB - Bottom of Boring N/O - no odor N/S - no staining TOC - top of casing bgs - below ground surface

START/COMPLETION DATE: 02/06/2015

SAND PACK INTERVAL (FEET): ~4-10

PROJECT: WANDELL E UNIT #1

BENTONITE/GROUT INTERVAL (FEET): ~0-4'

LOGGED BY: D. COLOCCIA

WELL SCREEN INTERVAL (FEET): N/A

DRILLING COMPANY/EQUIPMENT: EEC/GEOPROBE 7822 DT

WELL DIAMETER (INCHES): N/A

BORING DEPTH (FEET): 10

WELL DEPTH (FEET): N/A

PID INSTRUMENT: MiniRAE 2000

TIME STARTED/COMPLETED: 0945/1015

SAMPLE COLLECTION DEPTH (FEET)/TIME: 7.5-10/1015



EAGLE
ENVIRONMENTAL
CONSULTING, INC.

4101 INCA STREET, DENVER, CO 80211
Ph: 303-433-0479 • F: 303-325-5449

Boring Log/Well Completion Diagram: SB-04

PAGE 1 OF 1

DEPTH (FT)	LITHOLOGY	SAMPLE				OVM/OVA (PPM)	BLOW COUNT (per 0.5 FT)	DEPTH (FT)	WELL CONSTRUCTION DETAIL	COMMENTS
	DESCRIPTION	GRAPHIC LOG	TYPE	NUMBER	RECOVERY %					
0	0-5 - Potholed									
5	sandy CLAY - brown, medium stiff, moderate plasticity, poorly sorted with approx. 15% fine-grained sand, moist, N/O, N/S	CL	GP	1	100	0.0	N/A	5		
10	9-10 silty SAND - light brown to brown, fine to medium grained, poorly sorted with approx. 25% silt, moist, N/O, N/S	SM				0.0		10		
	BoB @ 10'									
15								15		
20								20		
25								25		
30										HC - Hydrocarbon BoB - Bottom of Boring N/O - no odor N/S - no staining TOC - top of casing bgs - below ground surface

START/COMPLETION DATE: 02/06/2015

SAND PACK INTERVAL (FEET): ~4-10

PROJECT: WANDELL E UNIT #1

BENTONITE/GROUT INTERVAL (FEET): ~0-4'

LOGGED BY: D. COLOCCIA

WELL SCREEN INTERVAL (FEET): N/A

DRILLING COMPANY/EQUIPMENT: EEC/GEOPROBE 7822 DT

WELL DIAMETER (INCHES): N/A

BORING DEPTH (FEET): 10

WELL DEPTH (FEET): N/A

PID INSTRUMENT: MiniRAE 2000

TIME STARTED/COMPLETED: 1015/1035

SAMPLE COLLECTION DEPTH (FEET)/TIME: 7.5-10/1033



EAGLE
 ENVIRONMENTAL
 CONSULTING, INC.

4101 INCA STREET, DENVER, CO 80211
 Ph: 303-433-0479 • F: 303-325-5449

Boring Log/Well Completion Diagram: SB-05

PAGE 1 OF 1

DEPTH (FT)	LITHOLOGY	SAMPLE				OVM/OVA (PPM)	BLOW COUNT (per 0.5 FT)	DEPTH (FT)	WELL CONSTRUCTION DETAIL	COMMENTS
	DESCRIPTION	GRAPHIC LOG	TYPE	NUMBER	RECOVERY %					
0	0-5 - Potholed									
5	sandy CLAY - brown, medium stiff, moderate plasticity, poorly sorted with approx. 15% fine-grained sand, moist, N/O, N/S	CL	GP	1	100	0.0	N/A	5		
10	9-10 silty SAND - light brown to brown, fine to medium grained, poorly sorted with approx. 30% silt, moist, N/O, N/S	SM				0.0		10		
	BoB @ 10'									
15								15		
20								20		
25								25		
30										HC - Hydrocarbon BoB - Bottom of Boring N/O - no odor N/S - no staining TOC - top of casing bgs - below ground surface

START/COMPLETION DATE: 02/06/2015

SAND PACK INTERVAL (FEET): ~4-10

PROJECT: WANDELL E UNIT #1

BENTONITE/GROUT INTERVAL (FEET): ~0-4'

LOGGED BY: D. COLOCCIA

WELL SCREEN INTERVAL (FEET): N/A

DRILLING COMPANY/EQUIPMENT: EEC/GEOPROBE 7822 DT

WELL DIAMETER (INCHES): N/A

BORING DEPTH (FEET): 10

WELL DEPTH (FEET): N/A

PID INSTRUMENT: MiniRAE 2000

TIME STARTED/COMPLETED: 1035/1055

SAMPLE COLLECTION DEPTH (FEET)/TIME: 7.5-10/1051



EAGLE
ENVIRONMENTAL
CONSULTING, INC.

4101 INCA STREET, DENVER, CO 80211
Ph: 303-433-0479 • F: 303-325-5449

ATTACHMENT B

Laboratory Analytical Report



February 19, 2015

Eagle Environmental Consulting, Inc.

Dan Coloccia

4101 Inca Street

Denver

CO 80211

Project Name - Wandell E Unit #1

Project Number - [none]

Attached are your analytical results for Wandell E Unit #1 received by Origins Laboratory, Inc. February 06, 2015. This project is associated with Origins project number X502068-01.

The analytical results in the following report were analyzed under the guidelines of EPA Methods. These methods are identified as follows; "SW" are defined in SW-846, "EPA" are defined in 40CFR part 136 and "SM" are defined in the most current revision of Standard Methods For the Examination of Water and Wastewater.

The analytical results apply specifically to the samples and analyses specified per the attached Chain of Custody. As such, this report shall not be reproduced except in full, without the written approval of Origin's laboratory.

Unless otherwise noted, the analytical results for all soil samples are reported on a wet weight basis. All analytical analyses were performed under NELAP guidelines unless noted by a data qualifier.

Any holding time exceedances, deviations from the method specifications or deviations from Origins Laboratory's Standard Operating Procedures are outlined in the case narrative.

Thank you for selecting Origins for your analytical needs. Please contact us with any questions concerning this report, or if we can help with anything at all.

Origins Laboratory, Inc.
303.433.1322
o-squad@oelabinc.com



1725 Elk Place, Denver, CO 80211 | Phone: 303.433.1322 | Fax: 303.265.9645

Eagle Environmental Consulting, Inc.

4101 Inca Street

Denver CO 80211

Dan Coloccia

Project Number: [none]

Project: Wandell E Unit #1

CROSS REFERENCE REPORT

Sample ID	Laboratory ID	Matrix	Date Sampled	Date Received
Wandell E Unit #1-SB-01 @ 7.5-10'-020615	X502068-01	Soil	February 6, 2015 9:15	02/06/2015 12:53
Wandell E Unit #1-SB-02 @ 7.5-10'-020615	X502068-02	Soil	February 6, 2015 9:45	02/06/2015 12:53
Wandell E Unit #1-SB-03 @ 7.5-10'-020615	X502068-03	Soil	February 6, 2015 10:15	02/06/2015 12:53
Wandell E Unit #1-SB-04 @ 7.5-10'-020615	X502068-04	Soil	February 6, 2015 10:33	02/06/2015 12:53
Wandell E Unit #1-SB-05 @ 7.5-10'-020615	X502068-05	Soil	February 6, 2015 10:51	02/06/2015 12:53

Origins Laboratory, Inc.



The results in this report apply to the samples analyzed in accordance with the chain of custody document. This analytical report must be reproduced in its entirety.

Eagle Environmental Consulting, Inc.

4101 Inca Street

Denver CO 80211

Dan Coloccia

Project Number: [none]

Project: Wandell E Unit #1

Origins Laboratory

F-012207-01-R1
Effective Date: 01/09/12

Sample Receipt Checklist

Origins Work Order: XS20068

Client: Eagle

Client Project ID: Wandell E Unit #1

Checklist Completed by: Jeff Smith

Shipped Via: HD

(UPS, FedEx, Hand Delivered, Pick-up, etc.)

Date/time completed: 2/6/15

Airbill #: NA

Matrix(s) Received: (Check all that apply): ☒ Soil/Solid ☐ Water ☐ Other: _____

Cooler Number/Temperature: 1 / 1.7 °C _____ / _____ °C _____ / _____ °C (Describe)

Thermometer ID: T003

Requirement Description	Yes	No	N/A	Comments (if any)
If samples require cooling, was the temperature between 0°C to ≤ 6°C ⁽¹⁾ ?	<input checked="" type="checkbox"/>			
Is there ice present (document if blue ice is used)	<input checked="" type="checkbox"/>			
Are custody seals present on cooler? (if so, document in comments if they are signed and dated, broken or intact)		<input checked="" type="checkbox"/>		
Are custody seals present on each sample container? (if so, document in comments if they are signed and dated, broken or intact)		<input checked="" type="checkbox"/>		
Were all samples received intact ⁽¹⁾ ?	<input checked="" type="checkbox"/>			
Was adequate sample volume provided ⁽¹⁾ ?	<input checked="" type="checkbox"/>			
Are short holding time analytes or samples with HTs due within 48 hours present ⁽¹⁾ ?		<input checked="" type="checkbox"/>		
Is a chain-of-custody (COC) present and filled out completely ⁽¹⁾ ?	<input checked="" type="checkbox"/>			
Does the COC agree with the number and type of sample bottles received ⁽¹⁾ ?	<input checked="" type="checkbox"/>			
Do the sample IDs on the bottle labels match the COC ⁽¹⁾ ?	<input checked="" type="checkbox"/>			
Is the COC properly relinquished by the client with date and time recorded ⁽¹⁾ ?	<input checked="" type="checkbox"/>			
For volatiles in water — is there headspace (> ¼ inch bubble) present? If yes, contact client and note in narrative.			<input checked="" type="checkbox"/>	
Are samples preserved that require preservation and was it checked ⁽¹⁾ ? (note ID of confirmation instrument used in comments) / (preservation is not confirmed for subcontracted analyses in order to insure sample integrity)/(pH <2 for samples preserved with HNO ₃ , HCL, H ₂ SO ₄) / (pH >10 for samples preserved with NaAsO ₂ +NaOH, ZnAc+NaOH)			<input checked="" type="checkbox"/>	
Additional Comments (if any):				

⁽¹⁾ If NO, then contact the client before proceeding with analysis and note date/time and person contacted as well as the corrective action to in the additional comments (above) and the case narrative.

Reviewed by: [Signature] (Project Manager)

Date/Time Reviewed: 02-09-15

Origins Laboratory, Inc.

[Signature]

The results in this report apply to the samples analyzed in accordance with the chain of custody document. This analytical report must be reproduced in its entirety.

Eagle Environmental Consulting, Inc.
4101 Inca Street
Denver CO 80211

Dan Coloccia
Project Number: [none]
Project: Wandell E Unit #1

Wandell E Unit #1-SB-01 @ 7.5-10'-0'
2/6/2015 9:15:00AM

Analyte	Result	Reporting Limit	Units	Dilution	Batch	Prepared	Analyzed	Notes
---------	--------	-----------------	-------	----------	-------	----------	----------	-------

GEL Laboratories, LLC
X502068-01 (Soil)

Anions by EPA 300.0

Nitrate	18.3	1.13	mg/kg dry	1	1456628	02/10/2015	02/10/2015	
Nitrite	ND	1.13	"	"	"	"	"	U

Cyanide by SW9012B

Cyanide, Total	ND	186	ug/kg dry	1	1455535	"	02/10/2015	U
----------------	----	-----	-----------	---	---------	---	------------	---

Explosives by 8330

2,4,6-Trinitrotoluene	ND	149	ug/kg	2	1457824	02/16/2015	02/17/2015	U
2,4-Dinitrotoluene	ND	149	"	"	"	"	"	U
2,6-Dinitrotoluene	ND	149	"	"	"	"	"	U
2-Amino-4,6-dinitrotoluene	ND	149	"	"	"	"	"	U
4-Amino-2,6-dinitrotoluene	ND	149	"	"	"	"	"	U
p-Nitrotoluene	ND	149	"	"	"	"	"	U
Tetryl	ND	149	"	"	"	"	"	U

Surrogate: 3,4-Dinitrotoluene	99 %	60-149			"	"	"	
-------------------------------	------	--------	--	--	---	---	---	--

Glycols by SW846 8015C

Ethylene glycol	ND	49.7	mg/kg dry	1	1457755	02/13/2015	02/14/2015	U
-----------------	----	------	-----------	---	---------	------------	------------	---

Origins Laboratory, Inc.



The results in this report apply to the samples analyzed in accordance with the chain of custody document. This analytical report must be reproduced in its entirety.

Eagle Environmental Consulting, Inc.
4101 Inca Street
Denver CO 80211

Dan Coloccia
Project Number: [none]
Project: Wandell E Unit #1

Wandell E Unit #1-SB-01 @ 7.5-10'-0"
2/6/2015 9:15:00AM

Analyte	Result	Reporting Limit	Units	Dilution	Batch	Prepared	Analyzed	Notes
---------	--------	-----------------	-------	----------	-------	----------	----------	-------

GEL Laboratories, LLC
X502068-01 (Soil)

Herbicides by 8151A

2,4,5-T	ND	0.00567	mg/kg dry	1	1456670	02/11/2015	02/13/2015	U
2,4,5-TP	ND	0.00567	"	"	"	"	"	U
2,4-D	ND	0.00567	"	"	"	"	"	U
2,4-DB	ND	0.00567	"	"	"	"	"	U
Dalapon	ND	0.113	"	"	"	"	"	U
Dinoseb	ND	0.00567	"	"	"	"	"	U
MCPA	ND	1.13	"	"	"	"	"	U
MCPP	ND	1.13	"	"	"	"	"	U

Surrogate: 2,4-Dichlorophenylacetic acid 134 % 33-143 " " "

Mercury by 7471 Cold Vapor

Mercury	0.00891	0.0126	mg/kg dry	1	1456601	02/10/2015	02/11/2015	J
---------	---------	--------	-----------	---	---------	------------	------------	---

Metals by SW846 3050B/6010C

Aluminum	3710	22.1	mg/kg dry	1	1456460	"	02/11/2015	
Antimony	0.563	1.11	"	"	"	"	"	J
Arsenic	2.32	3.32	"	"	"	"	"	J
Barium	53.9	0.554	"	"	"	"	"	
Beryllium	0.317	0.554	"	"	"	"	"	J
Cadmium	ND	0.554	"	"	"	"	"	U

Origins Laboratory, Inc.



The results in this report apply to the samples analyzed in accordance with the chain of custody document. This analytical report must be reproduced in its entirety.

Eagle Environmental Consulting, Inc.
4101 Inca Street
Denver CO 80211

Dan Coloccia
Project Number: [none]
Project: Wandell E Unit #1

Wandell E Unit #1-SB-01 @ 7.5-10'-0'
2/6/2015 9:15:00AM

Analyte	Result	Reporting Limit	Units	Dilution	Batch	Prepared	Analyzed	Notes
---------	--------	--------------------	-------	----------	-------	----------	----------	-------

GEL Laboratories, LLC
X502068-01 (Soil)

Metals by SW846 3050B/6010C

Chromium	9.26	0.554	mg/kg dry	1	1456460	02/10/2015	02/11/2015	
Cobalt	2.53	0.554	"	"	"	"	"	
Copper	5.54	1.11	"	"	"	"	"	
Iron	8490	27.7	"	"	"	"	"	
Lead	5.70	1.11	"	"	"	"	"	
Manganese	88.9	1.11	"	"	"	"	"	
Nickel	4.57	0.554	"	"	"	"	"	
Selenium	ND	3.32	"	"	"	"	"	U
Silver	ND	0.554	"	"	"	"	"	U
Thallium	ND	2.21	"	"	"	"	"	U
Vanadium	14.7	0.554	"	"	"	"	"	
Zinc	31.0	1.11	"	"	"	"	"	

Metals by SW846_7196A

Hexavalent Chromium	ND	0.452	mg/kg dry	1	1456774	"	02/12/2015	U
---------------------	----	-------	-----------	---	---------	---	------------	---

PCBs by SW846 3541/8082A

Aroclor-1016	ND	0.00377	mg/kg dry	1	1456409	"	02/11/2015	U
Aroclor-1254	ND	0.00377	"	"	"	"	"	U
Aroclor-1260	ND	0.00377	"	"	"	"	"	U
Aroclor-Total	ND	0.00377	"	"	"	"	"	U

Origins Laboratory, Inc.



The results in this report apply to the samples analyzed in accordance with the chain of custody document. This analytical report must be reproduced in its entirety.

Eagle Environmental Consulting, Inc.
4101 Inca Street
Denver CO 80211

Dan Coloccia
Project Number: [none]
Project: Wandell E Unit #1

Wandell E Unit #1-SB-01 @ 7.5-10'-0'
2/6/2015 9:15:00AM

Analyte	Result	Reporting Limit	Units	Dilution	Batch	Prepared	Analyzed	Notes
---------	--------	-----------------	-------	----------	-------	----------	----------	-------

GEL Laboratories, LLC
X502068-01 (Soil)

PCBs by SW846 3541/8082A

Surrogate: 4cmx	87 %	29-106			1456409	02/10/2015	02/11/2015	
Surrogate: Decachlorobiphenyl	98 %	25-131			"	"	"	

Pesticides by 8081B/3541

4,4'-DDD	ND	0.00151	mg/kg dry	1	1456428	"	02/10/2015	U
4,4'-DDE	ND	0.00151	"	"	"	"	"	U
4,4'-DDT	ND	0.00151	"	"	"	"	"	U
Aldrin	ND	0.000754	"	"	"	"	"	U
alpha-BHC	ND	0.000754	"	"	"	"	"	U
beta-BHC	ND	0.000754	"	"	"	"	"	U
Chlordane	ND	0.00942	"	"	"	"	"	U
Dieldrin	ND	0.00151	"	"	"	"	"	U
Endosulfan I	ND	0.000754	"	"	"	"	"	U
Endosulfan II	ND	0.00151	"	"	"	"	"	U
Endosulfan sulfate	ND	0.00151	"	"	"	"	"	U
Endrin	ND	0.00151	"	"	"	"	"	U
Endrin aldehyde	ND	0.00151	"	"	"	"	"	U
gamma-BHC (Lindane)	ND	0.000754	"	"	"	"	"	U
Heptachlor	ND	0.000754	"	"	"	"	"	U

Origins Laboratory, Inc.



The results in this report apply to the samples analyzed in accordance with the chain of custody document. This analytical report must be reproduced in its entirety.

Eagle Environmental Consulting, Inc.
4101 Inca Street
Denver CO 80211

Dan Coloccia
Project Number: [none]
Project: Wandell E Unit #1

Wandell E Unit #1-SB-01 @ 7.5-10'-0"
2/6/2015 9:15:00AM

Analyte	Result	Reporting Limit	Units	Dilution	Batch	Prepared	Analyzed	Notes
---------	--------	--------------------	-------	----------	-------	----------	----------	-------

GEL Laboratories, LLC
X502068-01 (Soil)

Pesticides by 8081B/3541

Heptachlor epoxide	ND	0.000754	mg/kg dry	1	1456428	02/10/2015	02/10/2015	U
Methoxychlor	ND	0.00754	"	"	"	"	"	U
Toxaphene	ND	0.0188	"	"	"	"	"	U

Surrogate: 4cmx	63 %	27-124			"	"	"	
Surrogate: Decachlorobiphenyl	71 %	31-131			"	"	"	

Solvent Scan by SW846 8015C

Hexane	ND	54400	ug/kg dry	1	1457752	02/13/2015	02/13/2015	U
--------	----	-------	-----------	---	---------	------------	------------	---

SVOC by 8270D/3541

1,2,4-Trichlorobenzene	ND	0.378	mg/kg dry	1	1456217	02/09/2015	02/10/2015	U
1,2-Dichlorobenzene	ND	0.378	"	"	"	"	"	U
1,4-Dinitrobenzene	ND	0.378	"	"	"	"	"	U
1,4-Dioxane	ND	0.378	"	"	"	"	"	U
1-Methylnaphthalene	ND	0.0378	"	"	"	"	"	U
2,4,5-Trichlorophenol	ND	0.378	"	"	"	"	"	U
2,4,6-Trichlorophenol	ND	0.378	"	"	"	"	"	U
2,4-Dichlorophenol	ND	0.378	"	"	"	"	"	U
2,4-Dimethylphenol	ND	0.378	"	"	"	"	"	U

Origins Laboratory, Inc.



The results in this report apply to the samples analyzed in accordance with the chain of custody document. This analytical report must be reproduced in its entirety.

Eagle Environmental Consulting, Inc.
4101 Inca Street
Denver CO 80211

Dan Coloccia
Project Number: [none]
Project: Wandell E Unit #1

Wandell E Unit #1-SB-01 @ 7.5-10'-0'
2/6/2015 9:15:00AM

Analyte	Result	Reporting Limit	Units	Dilution	Batch	Prepared	Analyzed	Notes
---------	--------	-----------------	-------	----------	-------	----------	----------	-------

GEL Laboratories, LLC
X502068-01 (Soil)

SVOC by 8270D/3541

2,4-Dinitrophenol	ND	0.755	mg/kg dry	1	1456217	02/09/2015	02/10/2015	U
2-Chloronaphthalene	ND	0.0378	"	"	"	"	"	U
2-Chlorophenol	ND	0.378	"	"	"	"	"	U
2-Methylnaphthalene	ND	0.0378	"	"	"	"	"	U
3,3'-Dichlorobenzidine	ND	0.378	"	"	"	"	"	U
4-Nitrophenol	ND	0.378	"	"	"	"	"	U
Acenaphthene	ND	0.0378	"	"	"	"	"	U
Acetophenone	ND	0.378	"	"	"	"	"	U
Anthracene	ND	0.0378	"	"	"	"	"	U
Benzo(a)anthracene	ND	0.0378	"	"	"	"	"	U
Benzo(a)pyrene	ND	0.0378	"	"	"	"	"	U
Benzo(b)fluoranthene	ND	0.0378	"	"	"	"	"	U
Benzo(k)fluoranthene	ND	0.0378	"	"	"	"	"	U
Benzoic acid	ND	0.755	"	"	"	"	"	U
Benzyl alcohol	ND	0.378	"	"	"	"	"	U
bis(2-Chloro-1-methylethyl)ether	ND	0.378	"	"	"	"	"	U
bis(2-Ethylhexyl)phthalate	ND	0.378	"	"	"	"	"	U
Butylbenzylphthalate	ND	0.378	"	"	"	"	"	U
Chrysene	ND	0.0378	"	"	"	"	"	U

Origins Laboratory, Inc.



The results in this report apply to the samples analyzed in accordance with the chain of custody document. This analytical report must be reproduced in its entirety.

Eagle Environmental Consulting, Inc.
4101 Inca Street
Denver CO 80211

Dan Coloccia
Project Number: [none]
Project: Wandell E Unit #1

Wandell E Unit #1-SB-01 @ 7.5-10'-0'
2/6/2015 9:15:00AM

Analyte	Result	Reporting Limit	Units	Dilution	Batch	Prepared	Analyzed	Notes
---------	--------	-----------------	-------	----------	-------	----------	----------	-------

GEL Laboratories, LLC
X502068-01 (Soil)

SVOC by 8270D/3541

Dibenzo(a,h)anthracene	ND	0.0378	mg/kg dry	1	1456217	02/09/2015	02/10/2015	U
Dibenzofuran	ND	0.378	"	"	"	"	"	U
Diethylphthalate	ND	0.378	"	"	"	"	"	U
Di-n-butylphthalate	ND	0.378	"	"	"	"	"	U
Diphenylamine	ND	0.378	"	"	"	"	"	U
Fluoranthene	ND	0.0378	"	"	"	"	"	U
Fluorene	ND	0.0378	"	"	"	"	"	U
Hexachlorobenzene	ND	0.378	"	"	"	"	"	U
Hexachlorobutadiene	ND	0.378	"	"	"	"	"	U
Hexachlorocyclopentadiene	ND	0.378	"	"	"	"	"	U
Hexachloroethane	ND	0.378	"	"	"	"	"	U
Indeno(1,2,3-cd)pyrene	ND	0.0378	"	"	"	"	"	U
Isophorone	ND	0.378	"	"	"	"	"	U
m,p-Cresols	ND	0.378	"	"	"	"	"	U
Naphthalene	ND	0.0378	"	"	"	"	"	U
Nitrobenzene	ND	0.378	"	"	"	"	"	U
N-Methyl-N-nitrosomethylamine	ND	0.378	"	"	"	"	"	U
N-Nitrosodipropylamine	ND	0.378	"	"	"	"	"	U
o-Cresol	ND	0.378	"	"	"	"	"	U

Origins Laboratory, Inc.



The results in this report apply to the samples analyzed in accordance with the chain of custody document. This analytical report must be reproduced in its entirety.

Eagle Environmental Consulting, Inc.
4101 Inca Street
Denver CO 80211

Dan Coloccia
Project Number: [none]
Project: Wandell E Unit #1

Wandell E Unit #1-SB-01 @ 7.5-10'-0'
2/6/2015 9:15:00AM

Analyte	Result	Reporting Limit	Units	Dilution	Batch	Prepared	Analyzed	Notes
---------	--------	-----------------	-------	----------	-------	----------	----------	-------

GEL Laboratories, LLC
X502068-01 (Soil)

SVOC by 8270D/3541

Pentachlorophenol	ND	0.378	mg/kg dry	1	1456217	02/09/2015	02/10/2015	U
Phenol	ND	0.378	"	"	"	"	"	U
Phorate	ND	0.378	"	"	"	"	"	U
Pyrene	ND	0.0378	"	"	"	"	"	U
Pyridine	ND	0.378	"	"	"	"	"	U

Surrogate: 2,4,6-Tribromophenol	89 %	20-122			"	"	"	
Surrogate: 2-Fluorobiphenyl	57 %	25-100			"	"	"	
Surrogate: 2-Fluorophenol	67 %	23-107			"	"	"	
Surrogate: Nitrobenzene-d5	60 %	21-103			"	"	"	
Surrogate: Phenol-d5	60 %	25-108			"	"	"	
Surrogate: p-Terphenyl-d14	65 %	31-124			"	"	"	

Volatiles by SW846 8260C

1,1,1,2-Tetrachloroethane	ND	0.00227	mg/kg dry	1	1456783	02/11/2015	02/11/2015	U
1,1,1-Trichloroethane	ND	0.00227	"	"	"	"	"	U
1,1,2,2-Tetrachloroethane	ND	0.00227	"	"	"	"	"	U
1,1,2-Trichloroethane	ND	0.00227	"	"	"	"	"	U
1,1-Dichloroethane	ND	0.00227	"	"	"	"	"	U
1,1-Dichloroethylene	ND	0.00227	"	"	"	"	"	U
1,2,3-Trichloropropane	ND	0.00227	"	"	"	"	"	U
1,2-Dibromo-3-chloropropane	ND	0.00227	"	"	"	"	"	U

Origins Laboratory, Inc.



The results in this report apply to the samples analyzed in accordance with the chain of custody document. This analytical report must be reproduced in its entirety.

Eagle Environmental Consulting, Inc.
4101 Inca Street
Denver CO 80211

Dan Coloccia
Project Number: [none]
Project: Wandell E Unit #1

Wandell E Unit #1-SB-01 @ 7.5-10'-0'
2/6/2015 9:15:00AM

Analyte	Result	Reporting Limit	Units	Dilution	Batch	Prepared	Analyzed	Notes
---------	--------	--------------------	-------	----------	-------	----------	----------	-------

GEL Laboratories, LLC
X502068-01 (Soil)

Volatiles by SW846 8260C

1,2-Dibromoethane	ND	0.00227	mg/kg dry	1	1456783	02/11/2015	02/11/2015	U
1,2-Dichlorobenzene	ND	0.00227	"	"	"	"	"	U
1,2-Dichloroethane	ND	0.00227	"	"	"	"	"	U
1,2-Dichloroethylene (total)	ND	0.00454	"	"	"	"	"	U
1,2-Dichloropropane	ND	0.00227	"	"	"	"	"	U
1,3,5-Trimethylbenzene	ND	0.00227	"	"	"	"	"	U
1,3-Dichlorobenzene	ND	0.00227	"	"	"	"	"	U
1,3-Dichloropropane	ND	0.00227	"	"	"	"	"	U
1,3-Dichloropropylene	ND	0.00227	"	"	"	"	"	U
1,4-Dichlorobenzene	ND	0.00227	"	"	"	"	"	U
2-Butanone	ND	0.0113	"	"	"	"	"	U
2-Hexanone	ND	0.0113	"	"	"	"	"	U
4-Methyl-2-pentanone	ND	0.0113	"	"	"	"	"	U
Acetone	ND	0.0113	"	"	"	"	"	U
Benzene	ND	0.00227	"	"	"	"	"	U
Bromobenzene	ND	0.00227	"	"	"	"	"	U
Bromodichloromethane	ND	0.00227	"	"	"	"	"	U
Bromoform	ND	0.00227	"	"	"	"	"	U
Bromomethane	ND	0.00227	"	"	"	"	"	U

Origins Laboratory, Inc.



The results in this report apply to the samples analyzed in accordance with the chain of custody document. This analytical report must be reproduced in its entirety.

Eagle Environmental Consulting, Inc.
4101 Inca Street
Denver CO 80211

Dan Coloccia
Project Number: [none]
Project: Wandell E Unit #1

Wandell E Unit #1-SB-01 @ 7.5-10'-0'
2/6/2015 9:15:00AM

Analyte	Result	Reporting Limit	Units	Dilution	Batch	Prepared	Analyzed	Notes
---------	--------	-----------------	-------	----------	-------	----------	----------	-------

GEL Laboratories, LLC
X502068-01 (Soil)

Volatiles by SW846 8260C

Carbon disulfide	ND	0.0113	mg/kg dry	1	1456783	02/11/2015	02/11/2015	U
Carbon tetrachloride	ND	0.00227	"	"	"	"	"	U
Chlorobenzene	ND	0.00227	"	"	"	"	"	U
Chloroform	ND	0.00227	"	"	"	"	"	U
cis-1,2-Dichloroethylene	ND	0.00227	"	"	"	"	"	U
Dibromochloromethane	ND	0.00227	"	"	"	"	"	U
Dichlorodifluoromethane	ND	0.00227	"	"	"	"	"	U
Ethyl acetate	ND	0.0113	"	"	"	"	"	U
Ethyl ether	ND	0.00227	"	"	"	"	"	U
Ethyl methacrylate	ND	0.0113	"	"	"	"	"	U
Ethylbenzene	ND	0.00227	"	"	"	"	"	U
Methylene chloride	ND	0.00567	"	"	"	"	"	U
n-Propylbenzene	ND	0.00227	"	"	"	"	"	U
Styrene	ND	0.00227	"	"	"	"	"	U
Tetrachloroethylene	ND	0.00227	"	"	"	"	"	U
Toluene	ND	0.00227	"	"	"	"	"	U
trans-1,2-Dichloroethylene	ND	0.00227	"	"	"	"	"	U
Trichloroethylene	ND	0.00227	"	"	"	"	"	U
Trichlorofluoromethane	ND	0.00227	"	"	"	"	"	U

Origins Laboratory, Inc.



The results in this report apply to the samples analyzed in accordance with the chain of custody document. This analytical report must be reproduced in its entirety.

Eagle Environmental Consulting, Inc.
4101 Inca Street
Denver CO 80211

Dan Coloccia
Project Number: [none]
Project: Wandell E Unit #1

Wandell E Unit #1-SB-01 @ 7.5-10'-0'
2/6/2015 9:15:00AM

Analyte	Result	Reporting Limit	Units	Dilution	Batch	Prepared	Analyzed	Notes
---------	--------	-----------------	-------	----------	-------	----------	----------	-------

GEL Laboratories, LLC
X502068-01 (Soil)

Volatiles by SW846 8260C

Trichlorotrifluoroethane	ND	0.00567	mg/kg dry	1	1456783	02/11/2015	02/11/2015	U
Vinyl acetate	ND	0.00567	"	"	"	"	"	U
Vinyl chloride	ND	0.00227	"	"	"	"	"	U
Xylenes (total)	ND	0.0068	"	"	"	"	"	U

Surrogate: 1,2-Dichloroethane-d4	97 %	70-128			"	"	"	
Surrogate: Bromofluorobenzene	108 %	63-138			"	"	"	
Surrogate: Toluene-d8	90 %	80-120			"	"	"	

Origins Laboratory, Inc.



The results in this report apply to the samples analyzed in accordance with the chain of custody document. This analytical report must be reproduced in its entirety.

Eagle Environmental Consulting, Inc.
4101 Inca Street
Denver CO 80211

Dan Coloccia
Project Number: [none]
Project: Wandell E Unit #1

Wandell E Unit #1-SB-02 @ 7.5-10'-0'
2/6/2015 9:45:00AM

Analyte	Result	Reporting Limit	Units	Dilution	Batch	Prepared	Analyzed	Notes
---------	--------	-----------------	-------	----------	-------	----------	----------	-------

GEL Laboratories, LLC
X502068-02 (Soil)

Anions by EPA 300.0

Nitrate	13.3	1.11	mg/kg dry	1	1456628	02/10/2015	02/10/2015	
Nitrite	ND	1.11	"	"	"	"	"	U

Cyanide by SW9012B

Cyanide, Total	ND	261	ug/kg dry	1	1455535	"	02/10/2015	U
----------------	----	-----	-----------	---	---------	---	------------	---

Explosives by 8330

2,4,6-Trinitrotoluene	ND	149	ug/kg	2	1457824	02/16/2015	02/17/2015	U
2,4-Dinitrotoluene	ND	149	"	"	"	"	"	U
2,6-Dinitrotoluene	ND	149	"	"	"	"	"	U
2-Amino-4,6-dinitrotoluene	ND	149	"	"	"	"	"	U
4-Amino-2,6-dinitrotoluene	ND	149	"	"	"	"	"	U
p-Nitrotoluene	ND	149	"	"	"	"	"	U
Tetryl	ND	149	"	"	"	"	"	U

Surrogate: 3,4-Dinitrotoluene	98 %	60-149			"	"	"	
-------------------------------	------	--------	--	--	---	---	---	--

Glycols by SW846 8015C

Ethylene glycol	ND	47.0	mg/kg dry	1	1457755	02/13/2015	02/14/2015	U
-----------------	----	------	-----------	---	---------	------------	------------	---

Origins Laboratory, Inc.



The results in this report apply to the samples analyzed in accordance with the chain of custody document. This analytical report must be reproduced in its entirety.

Eagle Environmental Consulting, Inc.
4101 Inca Street
Denver CO 80211

Dan Coloccia
Project Number: [none]
Project: Wandell E Unit #1

Wandell E Unit #1-SB-02 @ 7.5-10'-0"
2/6/2015 9:45:00AM

Analyte	Result	Reporting Limit	Units	Dilution	Batch	Prepared	Analyzed	Notes
---------	--------	-----------------	-------	----------	-------	----------	----------	-------

GEL Laboratories, LLC
X502068-02 (Soil)

Herbicides by 8151A

2,4,5-T	ND	0.00553	mg/kg dry	1	1456670	02/11/2015	02/13/2015	U
2,4,5-TP	ND	0.00553	"	"	"	"	"	U
2,4-D	ND	0.00553	"	"	"	"	"	U
2,4-DB	ND	0.00553	"	"	"	"	"	U
Dalapon	ND	0.111	"	"	"	"	"	U
Dinoseb	ND	0.00553	"	"	"	"	"	U
MCPA	ND	1.11	"	"	"	"	"	U
MCPP	ND	1.11	"	"	"	"	"	U

Surrogate: 2,4-Dichlorophenylacetic acid 120 % 33-143 " " "

Mercury by 7471 Cold Vapor

Mercury	0.00468	0.0132	mg/kg dry	1	1456601	02/10/2015	02/11/2015	J
---------	---------	--------	-----------	---	---------	------------	------------	---

Metals by SW846 3050B/6010C

Aluminum	5590	21.0	mg/kg dry	1	1456460	"	02/11/2015	
Antimony	ND	1.05	"	"	"	"	"	U
Arsenic	2.53	3.15	"	"	"	"	"	J
Barium	59.8	0.525	"	"	"	"	"	
Beryllium	0.459	0.525	"	"	"	"	"	J
Cadmium	0.107	0.525	"	"	"	"	"	J

Origins Laboratory, Inc.



The results in this report apply to the samples analyzed in accordance with the chain of custody document. This analytical report must be reproduced in its entirety.

Eagle Environmental Consulting, Inc.
4101 Inca Street
Denver CO 80211

Dan Coloccia
Project Number: [none]
Project: Wandell E Unit #1

Wandell E Unit #1-SB-02 @ 7.5-10'-0'
2/6/2015 9:45:00AM

Analyte	Result	Reporting Limit	Units	Dilution	Batch	Prepared	Analyzed	Notes
---------	--------	--------------------	-------	----------	-------	----------	----------	-------

GEL Laboratories, LLC
X502068-02 (Soil)

Metals by SW846 3050B/6010C

Chromium	18.8	0.525	mg/kg dry	1	1456460	02/10/2015	02/11/2015	
Cobalt	4.38	0.525	"	"	"	"	"	
Copper	9.42	1.05	"	"	"	"	"	
Iron	15800	26.3	"	"	"	"	"	
Lead	6.90	1.05	"	"	"	"	"	
Manganese	159	1.05	"	"	"	"	"	
Nickel	7.96	0.525	"	"	"	"	"	
Selenium	ND	15.8	"	5	"	"	"	U
Silver	ND	0.525	"	1	"	"	"	U
Thallium	ND	2.10	"	"	"	"	"	U
Vanadium	31.9	0.525	"	"	"	"	"	
Zinc	28.0	1.05	"	"	"	"	"	

Metals by SW846_7196A

Hexavalent Chromium	0.202	0.442	mg/kg dry	1	1456774	02/13/2015	02/12/2015	J
---------------------	-------	-------	-----------	---	---------	------------	------------	---

PCBs by SW846 3541/8082A

Aroclor-1016	ND	0.00368	mg/kg dry	1	1456409	02/10/2015	02/11/2015	U
Aroclor-1254	ND	0.00368	"	"	"	"	"	U
Aroclor-1260	ND	0.00368	"	"	"	"	"	U
Aroclor-Total	ND	0.00368	"	"	"	"	"	U

Origins Laboratory, Inc.



The results in this report apply to the samples analyzed in accordance with the chain of custody document. This analytical report must be reproduced in its entirety.

Eagle Environmental Consulting, Inc.
4101 Inca Street
Denver CO 80211

Dan Coloccia
Project Number: [none]
Project: Wandell E Unit #1

Wandell E Unit #1-SB-02 @ 7.5-10'-0'
2/6/2015 9:45:00AM

Analyte	Result	Reporting Limit	Units	Dilution	Batch	Prepared	Analyzed	Notes
---------	--------	-----------------	-------	----------	-------	----------	----------	-------

GEL Laboratories, LLC
X502068-02 (Soil)

PCBs by SW846 3541/8082A

Surrogate: 4cmx	91 %	29-106			1456409	02/10/2015	02/11/2015	
Surrogate: Decachlorobiphenyl	99 %	25-131			"	"	"	

Pesticides by 8081B/3541

4,4'-DDD	ND	0.00147	mg/kg dry	1	1456428	"	02/10/2015	U
4,4'-DDE	ND	0.00147	"	"	"	"	"	U
4,4'-DDT	ND	0.00147	"	"	"	"	"	U
Aldrin	ND	0.000735	"	"	"	"	"	U
alpha-BHC	ND	0.000735	"	"	"	"	"	U
beta-BHC	ND	0.000735	"	"	"	"	"	U
Chlordane	ND	0.00918	"	"	"	"	"	U
Dieldrin	ND	0.00147	"	"	"	"	"	U
Endosulfan I	ND	0.000735	"	"	"	"	"	U
Endosulfan II	ND	0.00147	"	"	"	"	"	U
Endosulfan sulfate	ND	0.00147	"	"	"	"	"	U
Endrin	ND	0.00147	"	"	"	"	"	U
Endrin aldehyde	ND	0.00147	"	"	"	"	"	U
gamma-BHC (Lindane)	ND	0.000735	"	"	"	"	"	U
Heptachlor	ND	0.000735	"	"	"	"	"	U

Origins Laboratory, Inc.



The results in this report apply to the samples analyzed in accordance with the chain of custody document. This analytical report must be reproduced in its entirety.

Eagle Environmental Consulting, Inc.
4101 Inca Street
Denver CO 80211

Dan Coloccia
Project Number: [none]
Project: Wandell E Unit #1

Wandell E Unit #1-SB-02 @ 7.5-10'-0"
2/6/2015 9:45:00AM

Analyte	Result	Reporting Limit	Units	Dilution	Batch	Prepared	Analyzed	Notes
---------	--------	--------------------	-------	----------	-------	----------	----------	-------

GEL Laboratories, LLC
X502068-02 (Soil)

Pesticides by 8081B/3541

Heptachlor epoxide	ND	0.000735	mg/kg dry	1	1456428	02/10/2015	02/10/2015	U
Methoxychlor	ND	0.00735	"	"	"	"	"	U
Toxaphene	ND	0.0184	"	"	"	"	"	U

Surrogate: 4cmx	68 %	27-124			"	"	"	
Surrogate: Decachlorobiphenyl	64 %	31-131			"	"	"	

Solvent Scan by SW846 8015C

Hexane	ND	45400	ug/kg dry	1	1457752	02/13/2015	02/13/2015	U
--------	----	-------	-----------	---	---------	------------	------------	---

SVOC by 8270D/3541

1,2,4-Trichlorobenzene	ND	0.368	mg/kg dry	1	1456217	02/09/2015	02/10/2015	U
1,2-Dichlorobenzene	ND	0.368	"	"	"	"	"	U
1,4-Dinitrobenzene	ND	0.368	"	"	"	"	"	U
1,4-Dioxane	ND	0.368	"	"	"	"	"	U
1-Methylnaphthalene	ND	0.0368	"	"	"	"	"	U
2,4,5-Trichlorophenol	ND	0.368	"	"	"	"	"	U
2,4,6-Trichlorophenol	ND	0.368	"	"	"	"	"	U
2,4-Dichlorophenol	ND	0.368	"	"	"	"	"	U
2,4-Dimethylphenol	ND	0.368	"	"	"	"	"	U

Origins Laboratory, Inc.



The results in this report apply to the samples analyzed in accordance with the chain of custody document. This analytical report must be reproduced in its entirety.

Eagle Environmental Consulting, Inc.
4101 Inca Street
Denver CO 80211

Dan Coloccia
Project Number: [none]
Project: Wandell E Unit #1

Wandell E Unit #1-SB-02 @ 7.5-10'-0'
2/6/2015 9:45:00AM

Analyte	Result	Reporting Limit	Units	Dilution	Batch	Prepared	Analyzed	Notes
---------	--------	-----------------	-------	----------	-------	----------	----------	-------

GEL Laboratories, LLC
X502068-02 (Soil)

SVOC by 8270D/3541

2,4-Dinitrophenol	ND	0.736	mg/kg dry	1	1456217	02/09/2015	02/10/2015	U
2-Chloronaphthalene	ND	0.0368	"	"	"	"	"	U
2-Chlorophenol	ND	0.368	"	"	"	"	"	U
2-Methylnaphthalene	ND	0.0368	"	"	"	"	"	U
3,3'-Dichlorobenzidine	ND	0.368	"	"	"	"	"	U
4-Nitrophenol	ND	0.368	"	"	"	"	"	U
Acenaphthene	ND	0.0368	"	"	"	"	"	U
Acetophenone	ND	0.368	"	"	"	"	"	U
Anthracene	ND	0.0368	"	"	"	"	"	U
Benzo(a)anthracene	ND	0.0368	"	"	"	"	"	U
Benzo(a)pyrene	ND	0.0368	"	"	"	"	"	U
Benzo(b)fluoranthene	ND	0.0368	"	"	"	"	"	U
Benzo(k)fluoranthene	ND	0.0368	"	"	"	"	"	U
Benzoic acid	ND	0.736	"	"	"	"	"	U
Benzyl alcohol	ND	0.368	"	"	"	"	"	U
bis(2-Chloro-1-methylethyl)ether	ND	0.368	"	"	"	"	"	U
bis(2-Ethylhexyl)phthalate	ND	0.368	"	"	"	"	"	U
Butylbenzylphthalate	ND	0.368	"	"	"	"	"	U
Chrysene	ND	0.0368	"	"	"	"	"	U

Origins Laboratory, Inc.



The results in this report apply to the samples analyzed in accordance with the chain of custody document. This analytical report must be reproduced in its entirety.

Eagle Environmental Consulting, Inc.
4101 Inca Street
Denver CO 80211

Dan Coloccia
Project Number: [none]
Project: Wandell E Unit #1

Wandell E Unit #1-SB-02 @ 7.5-10'-0'
2/6/2015 9:45:00AM

Analyte	Result	Reporting Limit	Units	Dilution	Batch	Prepared	Analyzed	Notes
---------	--------	--------------------	-------	----------	-------	----------	----------	-------

GEL Laboratories, LLC
X502068-02 (Soil)

SVOC by 8270D/3541

Dibenzo(a,h)anthracene	ND	0.0368	mg/kg dry	1	1456217	02/09/2015	02/10/2015	U
Dibenzofuran	ND	0.368	"	"	"	"	"	U
Diethylphthalate	ND	0.368	"	"	"	"	"	U
Di-n-butylphthalate	ND	0.368	"	"	"	"	"	U
Diphenylamine	ND	0.368	"	"	"	"	"	U
Fluoranthene	ND	0.0368	"	"	"	"	"	U
Fluorene	ND	0.0368	"	"	"	"	"	U
Hexachlorobenzene	ND	0.368	"	"	"	"	"	U
Hexachlorobutadiene	ND	0.368	"	"	"	"	"	U
Hexachlorocyclopentadiene	ND	0.368	"	"	"	"	"	U
Hexachloroethane	ND	0.368	"	"	"	"	"	U
Indeno(1,2,3-cd)pyrene	ND	0.0368	"	"	"	"	"	U
Isophorone	ND	0.368	"	"	"	"	"	U
m,p-Cresols	ND	0.368	"	"	"	"	"	U
Naphthalene	ND	0.0368	"	"	"	"	"	U
Nitrobenzene	ND	0.368	"	"	"	"	"	U
N-Methyl-N-nitrosomethylamine	ND	0.368	"	"	"	"	"	U
N-Nitrosodipropylamine	ND	0.368	"	"	"	"	"	U
o-Cresol	ND	0.368	"	"	"	"	"	U

Origins Laboratory, Inc.



The results in this report apply to the samples analyzed in accordance with the chain of custody document. This analytical report must be reproduced in its entirety.

Eagle Environmental Consulting, Inc.
4101 Inca Street
Denver CO 80211

Dan Coloccia
Project Number: [none]
Project: Wandell E Unit #1

Wandell E Unit #1-SB-02 @ 7.5-10'-0'
2/6/2015 9:45:00AM

Analyte	Result	Reporting Limit	Units	Dilution	Batch	Prepared	Analyzed	Notes
---------	--------	-----------------	-------	----------	-------	----------	----------	-------

GEL Laboratories, LLC
X502068-02 (Soil)

SVOC by 8270D/3541

Pentachlorophenol	ND	0.368	mg/kg dry	1	1456217	02/09/2015	02/10/2015	U
Phenol	ND	0.368	"	"	"	"	"	U
Phorate	ND	0.368	"	"	"	"	"	U
Pyrene	ND	0.0368	"	"	"	"	"	U
Pyridine	ND	0.368	"	"	"	"	"	U

Surrogate: 2,4,6-Tribromophenol	77 %	20-122			"	"	"	
Surrogate: 2-Fluorobiphenyl	65 %	25-100			"	"	"	
Surrogate: 2-Fluorophenol	59 %	23-107			"	"	"	
Surrogate: Nitrobenzene-d5	63 %	21-103			"	"	"	
Surrogate: Phenol-d5	59 %	25-108			"	"	"	
Surrogate: p-Terphenyl-d14	86 %	31-124			"	"	"	

Volatiles by SW846 8260C

1,1,1,2-Tetrachloroethane	ND	0.00221	mg/kg dry	1	1456783	02/11/2015	02/11/2015	U
1,1,1-Trichloroethane	ND	0.00221	"	"	"	"	"	U
1,1,2,2-Tetrachloroethane	ND	0.00221	"	"	"	"	"	U
1,1,2-Trichloroethane	ND	0.00221	"	"	"	"	"	U
1,1-Dichloroethane	ND	0.00221	"	"	"	"	"	U
1,1-Dichloroethylene	ND	0.00221	"	"	"	"	"	U
1,2,3-Trichloropropane	ND	0.00221	"	"	"	"	"	U
1,2-Dibromo-3-chloropropane	ND	0.00221	"	"	"	"	"	U

Origins Laboratory, Inc.



The results in this report apply to the samples analyzed in accordance with the chain of custody document. This analytical report must be reproduced in its entirety.

Eagle Environmental Consulting, Inc.
4101 Inca Street
Denver CO 80211

Dan Coloccia
Project Number: [none]
Project: Wandell E Unit #1

Wandell E Unit #1-SB-02 @ 7.5-10'-0'
2/6/2015 9:45:00AM

Analyte	Result	Reporting Limit	Units	Dilution	Batch	Prepared	Analyzed	Notes
---------	--------	--------------------	-------	----------	-------	----------	----------	-------

GEL Laboratories, LLC
X502068-02 (Soil)

Volatiles by SW846 8260C

1,2-Dibromoethane	ND	0.00221	mg/kg dry	1	1456783	02/11/2015	02/11/2015	U
1,2-Dichlorobenzene	ND	0.00221	"	"	"	"	"	U
1,2-Dichloroethane	ND	0.00221	"	"	"	"	"	U
1,2-Dichloroethylene (total)	ND	0.00443	"	"	"	"	"	U
1,2-Dichloropropane	ND	0.00221	"	"	"	"	"	U
1,3,5-Trimethylbenzene	ND	0.00221	"	"	"	"	"	U
1,3-Dichlorobenzene	ND	0.00221	"	"	"	"	"	U
1,3-Dichloropropane	ND	0.00221	"	"	"	"	"	U
1,3-Dichloropropylene	ND	0.00221	"	"	"	"	"	U
1,4-Dichlorobenzene	ND	0.00221	"	"	"	"	"	U
2-Butanone	ND	0.0111	"	"	"	"	"	U
2-Hexanone	ND	0.0111	"	"	"	"	"	U
4-Methyl-2-pentanone	ND	0.0111	"	"	"	"	"	U
Acetone	ND	0.0111	"	"	"	"	"	U
Benzene	ND	0.00221	"	"	"	"	"	U
Bromobenzene	ND	0.00221	"	"	"	"	"	U
Bromodichloromethane	ND	0.00221	"	"	"	"	"	U
Bromoform	ND	0.00221	"	"	"	"	"	U
Bromomethane	ND	0.00221	"	"	"	"	"	U

Origins Laboratory, Inc.



The results in this report apply to the samples analyzed in accordance with the chain of custody document. This analytical report must be reproduced in its entirety.

Eagle Environmental Consulting, Inc.
4101 Inca Street
Denver CO 80211

Dan Coloccia
Project Number: [none]
Project: Wandell E Unit #1

Wandell E Unit #1-SB-02 @ 7.5-10'-0'
2/6/2015 9:45:00AM

Analyte	Result	Reporting Limit	Units	Dilution	Batch	Prepared	Analyzed	Notes
---------	--------	--------------------	-------	----------	-------	----------	----------	-------

GEL Laboratories, LLC
X502068-02 (Soil)

Volatiles by SW846 8260C

Carbon disulfide	ND	0.0111	mg/kg dry	1	1456783	02/11/2015	02/11/2015	U
Carbon tetrachloride	ND	0.00221	"	"	"	"	"	U
Chlorobenzene	ND	0.00221	"	"	"	"	"	U
Chloroform	ND	0.00221	"	"	"	"	"	U
cis-1,2-Dichloroethylene	ND	0.00221	"	"	"	"	"	U
Dibromochloromethane	ND	0.00221	"	"	"	"	"	U
Dichlorodifluoromethane	ND	0.00221	"	"	"	"	"	U
Ethyl acetate	ND	0.0111	"	"	"	"	"	U
Ethyl ether	ND	0.00221	"	"	"	"	"	U
Ethyl methacrylate	ND	0.0111	"	"	"	"	"	U
Ethylbenzene	ND	0.00221	"	"	"	"	"	U
Methylene chloride	ND	0.00554	"	"	"	"	"	U
n-Propylbenzene	ND	0.00221	"	"	"	"	"	U
Styrene	ND	0.00221	"	"	"	"	"	U
Tetrachloroethylene	ND	0.00221	"	"	"	"	"	U
Toluene	ND	0.00221	"	"	"	"	"	U
trans-1,2-Dichloroethylene	ND	0.00221	"	"	"	"	"	U
Trichloroethylene	ND	0.00221	"	"	"	"	"	U
Trichlorofluoromethane	ND	0.00221	"	"	"	"	"	U

Origins Laboratory, Inc.



The results in this report apply to the samples analyzed in accordance with the chain of custody document. This analytical report must be reproduced in its entirety.

Eagle Environmental Consulting, Inc.
4101 Inca Street
Denver CO 80211

Dan Coloccia
Project Number: [none]
Project: Wandell E Unit #1

Wandell E Unit #1-SB-02 @ 7.5-10'-0'
2/6/2015 9:45:00AM

Analyte	Result	Reporting Limit	Units	Dilution	Batch	Prepared	Analyzed	Notes
---------	--------	-----------------	-------	----------	-------	----------	----------	-------

GEL Laboratories, LLC
X502068-02 (Soil)

Volatiles by SW846 8260C

Trichlorotrifluoroethane	ND	0.00554	mg/kg dry	1	1456783	02/11/2015	02/11/2015	U
Vinyl acetate	ND	0.00554	"	"	"	"	"	U
Vinyl chloride	ND	0.00221	"	"	"	"	"	U
Xylenes (total)	ND	0.00664	"	"	"	"	"	U

Surrogate: 1,2-Dichloroethane-d4	105 %	70-128			"	"	"	
Surrogate: Bromofluorobenzene	106 %	63-138			"	"	"	
Surrogate: Toluene-d8	90 %	80-120			"	"	"	

Origins Laboratory, Inc.



The results in this report apply to the samples analyzed in accordance with the chain of custody document. This analytical report must be reproduced in its entirety.

Eagle Environmental Consulting, Inc.
4101 Inca Street
Denver CO 80211

Dan Coloccia
Project Number: [none]
Project: Wandell E Unit #1

Wandell E Unit #1-SB-03 @ 7.5-10'-0'
2/6/2015 10:15:00AM

Analyte	Result	Reporting Limit	Units	Dilution	Batch	Prepared	Analyzed	Notes
---------	--------	-----------------	-------	----------	-------	----------	----------	-------

GEL Laboratories, LLC
X502068-03 (Soil)

Anions by EPA 300.0

Nitrate	2.42	1.41	mg/kg dry	1	1456628	02/10/2015	02/10/2015	
Nitrite	ND	1.41	"	"	"	"	"	U

Cyanide by SW9012B

Cyanide, Total	ND	251	ug/kg dry	1	1455535	"	02/10/2015	U
----------------	----	-----	-----------	---	---------	---	------------	---

Explosives by 8330

2,4,6-Trinitrotoluene	ND	149	ug/kg	2	1457824	02/16/2015	02/17/2015	U
2,4-Dinitrotoluene	ND	149	"	"	"	"	"	U
2,6-Dinitrotoluene	ND	149	"	"	"	"	"	U
2-Amino-4,6-dinitrotoluene	ND	149	"	"	"	"	"	U
4-Amino-2,6-dinitrotoluene	ND	149	"	"	"	"	"	U
p-Nitrotoluene	ND	149	"	"	"	"	"	U
Tetryl	ND	149	"	"	"	"	"	U

Surrogate: 3,4-Dinitrotoluene	96 %	60-149			"	"	"	
-------------------------------	------	--------	--	--	---	---	---	--

Glycols by SW846 8015C

Ethylene glycol	ND	61.5	mg/kg dry	1	1457755	02/13/2015	02/14/2015	U
-----------------	----	------	-----------	---	---------	------------	------------	---

Origins Laboratory, Inc.



The results in this report apply to the samples analyzed in accordance with the chain of custody document. This analytical report must be reproduced in its entirety.

Eagle Environmental Consulting, Inc.
4101 Inca Street
Denver CO 80211

Dan Coloccia
Project Number: [none]
Project: Wandell E Unit #1

Wandell E Unit #1-SB-03 @ 7.5-10'-0'
2/6/2015 10:15:00AM

Analyte	Result	Reporting Limit	Units	Dilution	Batch	Prepared	Analyzed	Notes
---------	--------	-----------------	-------	----------	-------	----------	----------	-------

GEL Laboratories, LLC
X502068-03 (Soil)

Herbicides by 8151A

2,4,5-T	ND	0.00704	mg/kg dry	1	1456670	02/11/2015	02/13/2015	U
2,4,5-TP	ND	0.00704	"	"	"	"	"	U
2,4-D	ND	0.00704	"	"	"	"	"	U
2,4-DB	ND	0.00704	"	"	"	"	"	U
Dalapon	ND	0.141	"	"	"	"	"	U
Dinoseb	ND	0.00704	"	"	"	"	"	U
MCPA	ND	1.41	"	"	"	"	"	U
MCPP	ND	1.41	"	"	"	"	"	U

Surrogate: 2,4-Dichlorophenylacetic acid 112 % 33-143 " " "

Mercury by 7471 Cold Vapor

Mercury	0.0188	0.0166	mg/kg dry	1	1456601	02/10/2015	02/11/2015	
---------	--------	--------	-----------	---	---------	------------	------------	--

Metals by SW846 3050B/6010C

Aluminum	7280	26.2	mg/kg dry	1	1456460	"	02/11/2015	
Antimony	ND	1.31	"	"	"	"	"	U
Arsenic	5.05	3.92	"	"	"	"	"	
Barium	59.8	0.654	"	"	"	"	"	
Beryllium	0.535	0.654	"	"	"	"	"	J
Cadmium	ND	0.654	"	"	"	"	"	U

Origins Laboratory, Inc.



The results in this report apply to the samples analyzed in accordance with the chain of custody document. This analytical report must be reproduced in its entirety.

Eagle Environmental Consulting, Inc.
4101 Inca Street
Denver CO 80211

Dan Coloccia
Project Number: [none]
Project: Wandell E Unit #1

Wandell E Unit #1-SB-03 @ 7.5-10'-0'
2/6/2015 10:15:00AM

Analyte	Result	Reporting Limit	Units	Dilution	Batch	Prepared	Analyzed	Notes
---------	--------	--------------------	-------	----------	-------	----------	----------	-------

GEL Laboratories, LLC
X502068-03 (Soil)

Metals by SW846 3050B/6010C

Chromium	11.3	0.654	mg/kg dry	1	1456460	02/10/2015	02/11/2015	
Cobalt	4.62	0.654	"	"	"	"	"	
Copper	10.4	1.31	"	"	"	"	"	
Iron	14000	32.7	"	"	"	"	"	
Lead	18.1	1.31	"	"	"	"	"	
Manganese	155	1.31	"	"	"	"	"	
Nickel	9.35	0.654	"	"	"	"	"	
Selenium	ND	3.92	"	"	"	"	"	U
Silver	ND	0.654	"	"	"	"	"	U
Thallium	ND	2.62	"	"	"	"	"	U
Vanadium	22.9	0.654	"	"	"	"	"	
Zinc	40.8	1.31	"	"	"	"	"	

Metals by SW846_7196A

Hexavalent Chromium	0.252	0.551	mg/kg dry	1	1456774	02/13/2015	02/12/2015	J
---------------------	-------	-------	-----------	---	---------	------------	------------	---

PCBs by SW846 3541/8082A

Aroclor-1016	ND	0.00469	mg/kg dry	1	1456409	02/10/2015	02/11/2015	U
Aroclor-1254	ND	0.00469	"	"	"	"	"	U
Aroclor-1260	ND	0.00469	"	"	"	"	"	U
Aroclor-Total	ND	0.00469	"	"	"	"	"	U

Origins Laboratory, Inc.



The results in this report apply to the samples analyzed in accordance with the chain of custody document. This analytical report must be reproduced in its entirety.

Eagle Environmental Consulting, Inc.
4101 Inca Street
Denver CO 80211

Dan Coloccia
Project Number: [none]
Project: Wandell E Unit #1

Wandell E Unit #1-SB-03 @ 7.5-10'-0'
2/6/2015 10:15:00AM

Analyte	Result	Reporting Limit	Units	Dilution	Batch	Prepared	Analyzed	Notes
---------	--------	-----------------	-------	----------	-------	----------	----------	-------

GEL Laboratories, LLC
X502068-03 (Soil)

PCBs by SW846 3541/8082A

Surrogate: 4cmx	87 %	29-106			1456409	02/10/2015	02/11/2015	
Surrogate: Decachlorobiphenyl	106 %	25-131			"	"	"	

Pesticides by 8081B/3541

4,4'-DDD	ND	0.00187	mg/kg dry	1	1456428	"	02/10/2015	U
4,4'-DDE	ND	0.00187	"	"	"	"	"	U
4,4'-DDT	ND	0.00187	"	"	"	"	"	U
Aldrin	ND	0.000935	"	"	"	"	"	U
alpha-BHC	ND	0.000935	"	"	"	"	"	U
beta-BHC	ND	0.000935	"	"	"	"	"	U
Chlordane	ND	0.0117	"	"	"	"	"	U
Dieldrin	ND	0.00187	"	"	"	"	"	U
Endosulfan I	ND	0.000935	"	"	"	"	"	U
Endosulfan II	ND	0.00187	"	"	"	"	"	U
Endosulfan sulfate	ND	0.00187	"	"	"	"	"	U
Endrin	ND	0.00187	"	"	"	"	"	U
Endrin aldehyde	ND	0.00187	"	"	"	"	"	U
gamma-BHC (Lindane)	ND	0.000935	"	"	"	"	"	U
Heptachlor	ND	0.000935	"	"	"	"	"	U

Origins Laboratory, Inc.



The results in this report apply to the samples analyzed in accordance with the chain of custody document. This analytical report must be reproduced in its entirety.

Eagle Environmental Consulting, Inc.
4101 Inca Street
Denver CO 80211

Dan Coloccia
Project Number: [none]
Project: Wandell E Unit #1

Wandell E Unit #1-SB-03 @ 7.5-10'-0"
2/6/2015 10:15:00AM

Analyte	Result	Reporting Limit	Units	Dilution	Batch	Prepared	Analyzed	Notes
---------	--------	--------------------	-------	----------	-------	----------	----------	-------

GEL Laboratories, LLC
X502068-03 (Soil)

Pesticides by 8081B/3541

Heptachlor epoxide	ND	0.000935	mg/kg dry	1	1456428	02/10/2015	02/10/2015	U
Methoxychlor	ND	0.00935	"	"	"	"	"	U
Toxaphene	ND	0.0234	"	"	"	"	"	U

Surrogate: 4cmx	63 %	27-124			"	"	"	
Surrogate: Decachlorobiphenyl	62 %	31-131			"	"	"	

Solvent Scan by SW846 8015C

Hexane	ND	57600	ug/kg dry	1	1457752	02/13/2015	02/13/2015	U
--------	----	-------	-----------	---	---------	------------	------------	---

SVOC by 8270D/3541

1,2,4-Trichlorobenzene	ND	2.35	mg/kg dry	5	1456217	02/09/2015	02/11/2015	U
1,2-Dichlorobenzene	ND	2.35	"	"	"	"	"	U
1,4-Dinitrobenzene	ND	2.35	"	"	"	"	"	U
1,4-Dioxane	ND	2.35	"	"	"	"	"	U
1-Methylnaphthalene	ND	0.235	"	"	"	"	"	U
2,4,5-Trichlorophenol	ND	2.35	"	"	"	"	"	U
2,4,6-Trichlorophenol	ND	2.35	"	"	"	"	"	U
2,4-Dichlorophenol	ND	2.35	"	"	"	"	"	U
2,4-Dimethylphenol	ND	2.35	"	"	"	"	"	U

Origins Laboratory, Inc.



The results in this report apply to the samples analyzed in accordance with the chain of custody document. This analytical report must be reproduced in its entirety.

Eagle Environmental Consulting, Inc.
4101 Inca Street
Denver CO 80211

Dan Coloccia
Project Number: [none]
Project: Wandell E Unit #1

Wandell E Unit #1-SB-03 @ 7.5-10'-0'
2/6/2015 10:15:00AM

Analyte	Result	Reporting Limit	Units	Dilution	Batch	Prepared	Analyzed	Notes
---------	--------	--------------------	-------	----------	-------	----------	----------	-------

GEL Laboratories, LLC
X502068-03 (Soil)

SVOC by 8270D/3541

2,4-Dinitrophenol	ND	4.69	mg/kg dry	5	1456217	02/09/2015	02/11/2015	U
2-Chloronaphthalene	ND	0.235	"	"	"	"	"	U
2-Chlorophenol	ND	2.35	"	"	"	"	"	U
2-Methylnaphthalene	ND	0.235	"	"	"	"	"	U
3,3'-Dichlorobenzidine	ND	2.35	"	"	"	"	"	U
4-Nitrophenol	ND	2.35	"	"	"	"	"	U
Acenaphthene	ND	0.235	"	"	"	"	"	U
Acetophenone	ND	2.35	"	"	"	"	"	U
Anthracene	ND	0.235	"	"	"	"	"	U
Benzo(a)anthracene	ND	0.235	"	"	"	"	"	U
Benzo(a)pyrene	ND	0.235	"	"	"	"	"	U
Benzo(b)fluoranthene	ND	0.235	"	"	"	"	"	U
Benzo(k)fluoranthene	ND	0.235	"	"	"	"	"	U
Benzoic acid	ND	4.69	"	"	"	"	"	U
Benzyl alcohol	ND	2.35	"	"	"	"	"	U
bis(2-Chloro-1-methylethyl)ether	ND	2.35	"	"	"	"	"	U
bis(2-Ethylhexyl)phthalate	ND	2.35	"	"	"	"	"	U
Butylbenzylphthalate	ND	2.35	"	"	"	"	"	U
Chrysene	ND	0.235	"	"	"	"	"	U

Origins Laboratory, Inc.



The results in this report apply to the samples analyzed in accordance with the chain of custody document. This analytical report must be reproduced in its entirety.

Eagle Environmental Consulting, Inc.
4101 Inca Street
Denver CO 80211

Dan Coloccia
Project Number: [none]
Project: Wandell E Unit #1

Wandell E Unit #1-SB-03 @ 7.5-10'-0'
2/6/2015 10:15:00AM

Analyte	Result	Reporting Limit	Units	Dilution	Batch	Prepared	Analyzed	Notes
---------	--------	-----------------	-------	----------	-------	----------	----------	-------

GEL Laboratories, LLC
X502068-03 (Soil)

SVOC by 8270D/3541

Dibenzo(a,h)anthracene	ND	0.235	mg/kg dry	5	1456217	02/09/2015	02/11/2015	U
Dibenzofuran	ND	2.35	"	"	"	"	"	U
Diethylphthalate	ND	2.35	"	"	"	"	"	U
Di-n-butylphthalate	ND	2.35	"	"	"	"	"	U
Diphenylamine	ND	2.35	"	"	"	"	"	U
Fluoranthene	ND	0.235	"	"	"	"	"	U
Fluorene	ND	0.235	"	"	"	"	"	U
Hexachlorobenzene	ND	2.35	"	"	"	"	"	U
Hexachlorobutadiene	ND	2.35	"	"	"	"	"	U
Hexachlorocyclopentadiene	ND	2.35	"	"	"	"	"	U
Hexachloroethane	ND	2.35	"	"	"	"	"	U
Indeno(1,2,3-cd)pyrene	ND	0.235	"	"	"	"	"	U
Isophorone	ND	2.35	"	"	"	"	"	U
m,p-Cresols	ND	2.35	"	"	"	"	"	U
Naphthalene	ND	0.235	"	"	"	"	"	U
Nitrobenzene	ND	2.35	"	"	"	"	"	U
N-Methyl-N-nitrosomethylamine	ND	2.35	"	"	"	"	"	U
N-Nitrosodipropylamine	ND	2.35	"	"	"	"	"	U
o-Cresol	ND	2.35	"	"	"	"	"	U

Origins Laboratory, Inc.



The results in this report apply to the samples analyzed in accordance with the chain of custody document. This analytical report must be reproduced in its entirety.

Eagle Environmental Consulting, Inc.
4101 Inca Street
Denver CO 80211

Dan Coloccia
Project Number: [none]
Project: Wandell E Unit #1

Wandell E Unit #1-SB-03 @ 7.5-10'-0"
2/6/2015 10:15:00AM

Analyte	Result	Reporting Limit	Units	Dilution	Batch	Prepared	Analyzed	Notes
---------	--------	-----------------	-------	----------	-------	----------	----------	-------

GEL Laboratories, LLC
X502068-03 (Soil)

SVOC by 8270D/3541

Pentachlorophenol	ND	2.35	mg/kg dry	5	1456217	02/09/2015	02/11/2015	U
Phenol	ND	2.35	"	"	"	"	"	U
Phorate	ND	2.35	"	"	"	"	"	U
Pyrene	ND	0.235	"	"	"	"	"	U
Pyridine	ND	2.35	"	"	"	"	"	U

Surrogate: 2,4,6-Tribromophenol	6 %	20-122			"	"	"	
Surrogate: 2-Fluorobiphenyl	33 %	25-100			"	"	"	
Surrogate: 2-Fluorophenol	30 %	23-107			"	"	"	
Surrogate: Nitrobenzene-d5	31 %	21-103			"	"	"	
Surrogate: Phenol-d5	32 %	25-108			"	"	"	
Surrogate: p-Terphenyl-d14	39 %	31-124			"	"	"	

Volatiles by SW846 8260C

1,1,1,2-Tetrachloroethane	ND	0.00282	mg/kg dry	1	1456783	02/11/2015	02/11/2015	U
1,1,1-Trichloroethane	ND	0.00282	"	"	"	"	"	U
1,1,2,2-Tetrachloroethane	ND	0.00282	"	"	"	"	"	U
1,1,2-Trichloroethane	ND	0.00282	"	"	"	"	"	U
1,1-Dichloroethane	ND	0.00282	"	"	"	"	"	U
1,1-Dichloroethylene	ND	0.00282	"	"	"	"	"	U
1,2,3-Trichloropropane	ND	0.00282	"	"	"	"	"	U
1,2-Dibromo-3-chloropropane	ND	0.00282	"	"	"	"	"	U

Origins Laboratory, Inc.



The results in this report apply to the samples analyzed in accordance with the chain of custody document. This analytical report must be reproduced in its entirety.

Eagle Environmental Consulting, Inc.
4101 Inca Street
Denver CO 80211

Dan Coloccia
Project Number: [none]
Project: Wandell E Unit #1

Wandell E Unit #1-SB-03 @ 7.5-10'-0'
2/6/2015 10:15:00AM

Analyte	Result	Reporting Limit	Units	Dilution	Batch	Prepared	Analyzed	Notes
---------	--------	-----------------	-------	----------	-------	----------	----------	-------

GEL Laboratories, LLC
X502068-03 (Soil)

Volatiles by SW846 8260C

1,2-Dibromoethane	ND	0.00282	mg/kg dry	1	1456783	02/11/2015	02/11/2015	U
1,2-Dichlorobenzene	ND	0.00282	"	"	"	"	"	U
1,2-Dichloroethane	ND	0.00282	"	"	"	"	"	U
1,2-Dichloroethylene (total)	ND	0.00563	"	"	"	"	"	U
1,2-Dichloropropane	ND	0.00282	"	"	"	"	"	U
1,3,5-Trimethylbenzene	ND	0.00282	"	"	"	"	"	U
1,3-Dichlorobenzene	ND	0.00282	"	"	"	"	"	U
1,3-Dichloropropane	ND	0.00282	"	"	"	"	"	U
1,3-Dichloropropylene	ND	0.00282	"	"	"	"	"	U
1,4-Dichlorobenzene	ND	0.00282	"	"	"	"	"	U
2-Butanone	ND	0.0141	"	"	"	"	"	U
2-Hexanone	ND	0.0141	"	"	"	"	"	U
4-Methyl-2-pentanone	ND	0.0141	"	"	"	"	"	U
Acetone	ND	0.0141	"	"	"	"	"	U
Benzene	ND	0.00282	"	"	"	"	"	U
Bromobenzene	ND	0.00282	"	"	"	"	"	U
Bromodichloromethane	ND	0.00282	"	"	"	"	"	U
Bromoform	ND	0.00282	"	"	"	"	"	U
Bromomethane	ND	0.00282	"	"	"	"	"	U

Origins Laboratory, Inc.



The results in this report apply to the samples analyzed in accordance with the chain of custody document. This analytical report must be reproduced in its entirety.

Eagle Environmental Consulting, Inc.
4101 Inca Street
Denver CO 80211

Dan Coloccia
Project Number: [none]
Project: Wandell E Unit #1

Wandell E Unit #1-SB-03 @ 7.5-10'-0"
2/6/2015 10:15:00AM

Analyte	Result	Reporting Limit	Units	Dilution	Batch	Prepared	Analyzed	Notes
---------	--------	--------------------	-------	----------	-------	----------	----------	-------

GEL Laboratories, LLC
X502068-03 (Soil)

Volatiles by SW846 8260C

Carbon disulfide	ND	0.0141	mg/kg dry	1	1456783	02/11/2015	02/11/2015	U
Carbon tetrachloride	ND	0.00282	"	"	"	"	"	U
Chlorobenzene	ND	0.00282	"	"	"	"	"	U
Chloroform	ND	0.00282	"	"	"	"	"	U
cis-1,2-Dichloroethylene	ND	0.00282	"	"	"	"	"	U
Dibromochloromethane	ND	0.00282	"	"	"	"	"	U
Dichlorodifluoromethane	ND	0.00282	"	"	"	"	"	U
Ethyl acetate	ND	0.0141	"	"	"	"	"	U
Ethyl ether	ND	0.00282	"	"	"	"	"	U
Ethyl methacrylate	ND	0.0141	"	"	"	"	"	U
Ethylbenzene	ND	0.00282	"	"	"	"	"	U
Methylene chloride	ND	0.00704	"	"	"	"	"	U
n-Propylbenzene	ND	0.00282	"	"	"	"	"	U
Styrene	ND	0.00282	"	"	"	"	"	U
Tetrachloroethylene	ND	0.00282	"	"	"	"	"	U
Toluene	ND	0.00282	"	"	"	"	"	U
trans-1,2-Dichloroethylene	ND	0.00282	"	"	"	"	"	U
Trichloroethylene	ND	0.00282	"	"	"	"	"	U
Trichlorofluoromethane	ND	0.00282	"	"	"	"	"	U

Origins Laboratory, Inc.



The results in this report apply to the samples analyzed in accordance with the chain of custody document. This analytical report must be reproduced in its entirety.

Eagle Environmental Consulting, Inc.
4101 Inca Street
Denver CO 80211

Dan Coloccia
Project Number: [none]
Project: Wandell E Unit #1

Wandell E Unit #1-SB-03 @ 7.5-10'-0'
2/6/2015 10:15:00AM

Analyte	Result	Reporting Limit	Units	Dilution	Batch	Prepared	Analyzed	Notes
---------	--------	--------------------	-------	----------	-------	----------	----------	-------

GEL Laboratories, LLC
X502068-03 (Soil)

Volatiles by SW846 8260C

Trichlorotrifluoroethane	ND	0.00704	mg/kg dry	1	1456783	02/11/2015	02/11/2015	U
Vinyl acetate	ND	0.00704	"	"	"	"	"	U
Vinyl chloride	ND	0.00282	"	"	"	"	"	U
Xylenes (total)	ND	0.00845	"	"	"	"	"	U

Surrogate: 1,2-Dichloroethane-d4	107 %	70-128			"	"	"
Surrogate: Bromofluorobenzene	147 %	63-138			"	"	"
Surrogate: Toluene-d8	117 %	80-120			"	"	"

Origins Laboratory, Inc.



The results in this report apply to the samples analyzed in accordance with the chain of custody document. This analytical report must be reproduced in its entirety.

Eagle Environmental Consulting, Inc.
4101 Inca Street
Denver CO 80211

Dan Coloccia
Project Number: [none]
Project: Wandell E Unit #1

Wandell E Unit #1-SB-04 @ 7.5-10'-0'
2/6/2015 10:33:00AM

Analyte	Result	Reporting Limit	Units	Dilution	Batch	Prepared	Analyzed	Notes
---------	--------	--------------------	-------	----------	-------	----------	----------	-------

GEL Laboratories, LLC
X502068-04 (Soil)

Anions by EPA 300.0

Nitrate	16.3	1.11	mg/kg dry	1	1456628	02/10/2015	02/10/2015	
Nitrite	0.448	1.11	"	"	"	"	"	J

Cyanide by SW9012B

Cyanide, Total	ND	203	ug/kg dry	1	1455535	"	02/10/2015	U
----------------	----	-----	-----------	---	---------	---	------------	---

Explosives by 8330

2,4,6-Trinitrotoluene	ND	150	ug/kg	2	1457824	02/16/2015	02/17/2015	U
2,4-Dinitrotoluene	ND	150	"	"	"	"	"	U
2,6-Dinitrotoluene	ND	150	"	"	"	"	"	U
2-Amino-4,6-dinitrotoluene	ND	150	"	"	"	"	"	U
4-Amino-2,6-dinitrotoluene	ND	150	"	"	"	"	"	U
p-Nitrotoluene	ND	150	"	"	"	"	"	U
Tetryl	ND	150	"	"	"	"	"	U

Surrogate: 3,4-Dinitrotoluene	97 %	60-149			"	"	"	
-------------------------------	------	--------	--	--	---	---	---	--

Glycols by SW846 8015C

Ethylene glycol	ND	49.9	mg/kg dry	1	1457755	02/13/2015	02/14/2015	U
-----------------	----	------	-----------	---	---------	------------	------------	---

Origins Laboratory, Inc.



The results in this report apply to the samples analyzed in accordance with the chain of custody document. This analytical report must be reproduced in its entirety.

Eagle Environmental Consulting, Inc.
4101 Inca Street
Denver CO 80211

Dan Coloccia
Project Number: [none]
Project: Wandell E Unit #1

Wandell E Unit #1-SB-04 @ 7.5-10'-0"
2/6/2015 10:33:00AM

Analyte	Result	Reporting Limit	Units	Dilution	Batch	Prepared	Analyzed	Notes
---------	--------	-----------------	-------	----------	-------	----------	----------	-------

GEL Laboratories, LLC
X502068-04 (Soil)

Herbicides by 8151A

2,4,5-T	ND	0.00553	mg/kg dry	1	1456670	02/11/2015	02/13/2015	U
2,4,5-TP	ND	0.00553	"	"	"	"	"	U
2,4-D	ND	0.00553	"	"	"	"	"	U
2,4-DB	ND	0.00553	"	"	"	"	"	U
Dalapon	ND	0.111	"	"	"	"	"	U
Dinoseb	ND	0.00553	"	"	"	"	"	U
MCPA	ND	1.11	"	"	"	"	"	U
MCPP	ND	1.11	"	"	"	"	"	U

Surrogate: 2,4-Dichlorophenylacetic acid 126 % 33-143 " " "

Mercury by 7471 Cold Vapor

Mercury	0.0152	0.013	mg/kg dry	1	1456601	02/10/2015	02/11/2015	
---------	--------	-------	-----------	---	---------	------------	------------	--

Metals by SW846 3050B/6010C

Aluminum	7060	21.4	mg/kg dry	1	1456460	"	02/11/2015	
Antimony	1.18	1.07	"	"	"	"	"	
Arsenic	4.13	3.21	"	"	"	"	"	
Barium	80.8	0.535	"	"	"	"	"	
Beryllium	0.570	0.535	"	"	"	"	"	
Cadmium	ND	0.535	"	"	"	"	"	U

Origins Laboratory, Inc.



The results in this report apply to the samples analyzed in accordance with the chain of custody document. This analytical report must be reproduced in its entirety.

Eagle Environmental Consulting, Inc.
4101 Inca Street
Denver CO 80211

Dan Coloccia
Project Number: [none]
Project: Wandell E Unit #1

Wandell E Unit #1-SB-04 @ 7.5-10'-0'
2/6/2015 10:33:00AM

Analyte	Result	Reporting Limit	Units	Dilution	Batch	Prepared	Analyzed	Notes
---------	--------	--------------------	-------	----------	-------	----------	----------	-------

GEL Laboratories, LLC
X502068-04 (Soil)

Metals by SW846 3050B/6010C

Chromium	15.2	0.535	mg/kg dry	1	1456460	02/10/2015	02/11/2015	
Cobalt	5.40	0.535	"	"	"	"	"	
Copper	11.4	1.07	"	"	"	"	"	
Iron	14300	26.8	"	"	"	"	"	
Lead	10.2	1.07	"	"	"	"	"	
Manganese	200	1.07	"	"	"	"	"	
Nickel	9.25	0.535	"	"	"	"	"	
Selenium	ND	16.1	"	5	"	"	"	U
Silver	ND	0.535	"	1	"	"	"	U
Thallium	ND	2.14	"	"	"	"	"	U
Vanadium	27.7	0.535	"	"	"	"	"	
Zinc	34.6	1.07	"	"	"	"	"	

Metals by SW846_7196A

Hexavalent Chromium	0.241	0.424	mg/kg dry	1	1456774	02/13/2015	02/12/2015	J
---------------------	-------	-------	-----------	---	---------	------------	------------	---

PCBs by SW846 3541/8082A

Aroclor-1016	ND	0.00368	mg/kg dry	1	1456409	02/10/2015	02/11/2015	U
Aroclor-1254	ND	0.00368	"	"	"	"	"	U
Aroclor-1260	ND	0.00368	"	"	"	"	"	U
Aroclor-Total	ND	0.00368	"	"	"	"	"	U

Origins Laboratory, Inc.



The results in this report apply to the samples analyzed in accordance with the chain of custody document. This analytical report must be reproduced in its entirety.

Eagle Environmental Consulting, Inc.
4101 Inca Street
Denver CO 80211

Dan Coloccia
Project Number: [none]
Project: Wandell E Unit #1

Wandell E Unit #1-SB-04 @ 7.5-10'-0'
2/6/2015 10:33:00AM

Analyte	Result	Reporting Limit	Units	Dilution	Batch	Prepared	Analyzed	Notes
---------	--------	-----------------	-------	----------	-------	----------	----------	-------

GEL Laboratories, LLC
X502068-04 (Soil)

PCBs by SW846 3541/8082A

Surrogate: 4cmx	82 %	29-106			1456409	02/10/2015	02/11/2015	
Surrogate: Decachlorobiphenyl	91 %	25-131			"	"	"	

Pesticides by 8081B/3541

4,4'-DDD	ND	0.00147	mg/kg dry	1	1456428	"	02/10/2015	U
4,4'-DDE	ND	0.00147	"	"	"	"	"	U
4,4'-DDT	ND	0.00147	"	"	"	"	"	U
Aldrin	ND	0.000735	"	"	"	"	"	U
alpha-BHC	ND	0.000735	"	"	"	"	"	U
beta-BHC	ND	0.000735	"	"	"	"	"	U
Chlordane	ND	0.00918	"	"	"	"	"	U
Dieldrin	ND	0.00147	"	"	"	"	"	U
Endosulfan I	ND	0.000735	"	"	"	"	"	U
Endosulfan II	ND	0.00147	"	"	"	"	"	U
Endosulfan sulfate	ND	0.00147	"	"	"	"	"	U
Endrin	ND	0.00147	"	"	"	"	"	U
Endrin aldehyde	ND	0.00147	"	"	"	"	"	U
gamma-BHC (Lindane)	ND	0.000735	"	"	"	"	"	U
Heptachlor	ND	0.000735	"	"	"	"	"	U

Origins Laboratory, Inc.



The results in this report apply to the samples analyzed in accordance with the chain of custody document. This analytical report must be reproduced in its entirety.

Eagle Environmental Consulting, Inc.
4101 Inca Street
Denver CO 80211

Dan Coloccia
Project Number: [none]
Project: Wandell E Unit #1

Wandell E Unit #1-SB-04 @ 7.5-10'-0"
2/6/2015 10:33:00AM

Analyte	Result	Reporting Limit	Units	Dilution	Batch	Prepared	Analyzed	Notes
---------	--------	--------------------	-------	----------	-------	----------	----------	-------

GEL Laboratories, LLC
X502068-04 (Soil)

Pesticides by 8081B/3541

Heptachlor epoxide	ND	0.000735	mg/kg dry	1	1456428	02/10/2015	02/10/2015	U
Methoxychlor	ND	0.00735	"	"	"	"	"	U
Toxaphene	ND	0.0184	"	"	"	"	"	U

Surrogate: 4cmx	65 %	27-124			"	"	"	
Surrogate: Decachlorobiphenyl	64 %	31-131			"	"	"	

Solvent Scan by SW846 8015C

Hexane	ND	54700	ug/kg dry	1	1457752	02/13/2015	02/13/2015	U
--------	----	-------	-----------	---	---------	------------	------------	---

SVOC by 8270D/3541

1,2,4-Trichlorobenzene	ND	0.369	mg/kg dry	1	1456217	02/09/2015	02/11/2015	U
1,2-Dichlorobenzene	ND	0.369	"	"	"	"	"	U
1,4-Dinitrobenzene	ND	0.369	"	"	"	"	"	U
1,4-Dioxane	ND	0.369	"	"	"	"	"	U
1-Methylnaphthalene	ND	0.0369	"	"	"	"	"	U
2,4,5-Trichlorophenol	ND	0.369	"	"	"	"	"	U
2,4,6-Trichlorophenol	ND	0.369	"	"	"	"	"	U
2,4-Dichlorophenol	ND	0.369	"	"	"	"	"	U
2,4-Dimethylphenol	ND	0.369	"	"	"	"	"	U

Origins Laboratory, Inc.



The results in this report apply to the samples analyzed in accordance with the chain of custody document. This analytical report must be reproduced in its entirety.

Eagle Environmental Consulting, Inc.
4101 Inca Street
Denver CO 80211

Dan Coloccia
Project Number: [none]
Project: Wandell E Unit #1

Wandell E Unit #1-SB-04 @ 7.5-10'-0'
2/6/2015 10:33:00AM

Analyte	Result	Reporting Limit	Units	Dilution	Batch	Prepared	Analyzed	Notes
---------	--------	-----------------	-------	----------	-------	----------	----------	-------

GEL Laboratories, LLC
X502068-04 (Soil)

SVOC by 8270D/3541

2,4-Dinitrophenol	ND	0.737	mg/kg dry	1	1456217	02/09/2015	02/11/2015	U
2-Chloronaphthalene	ND	0.0369	"	"	"	"	"	U
2-Chlorophenol	ND	0.369	"	"	"	"	"	U
2-Methylnaphthalene	ND	0.0369	"	"	"	"	"	U
3,3'-Dichlorobenzidine	ND	0.369	"	"	"	"	"	U
4-Nitrophenol	ND	0.369	"	"	"	"	"	U
Acenaphthene	ND	0.0369	"	"	"	"	"	U
Acetophenone	ND	0.369	"	"	"	"	"	U
Anthracene	ND	0.0369	"	"	"	"	"	U
Benzo(a)anthracene	ND	0.0369	"	"	"	"	"	U
Benzo(a)pyrene	ND	0.0369	"	"	"	"	"	U
Benzo(b)fluoranthene	ND	0.0369	"	"	"	"	"	U
Benzo(k)fluoranthene	ND	0.0369	"	"	"	"	"	U
Benzoic acid	ND	0.737	"	"	"	"	"	U
Benzyl alcohol	0.246	0.369	"	"	"	"	"	J
bis(2-Chloro-1-methylethyl)ether	ND	0.369	"	"	"	"	"	U
bis(2-Ethylhexyl)phthalate	ND	0.369	"	"	"	"	"	U
Butylbenzylphthalate	ND	0.369	"	"	"	"	"	U
Chrysene	ND	0.0369	"	"	"	"	"	U

Origins Laboratory, Inc.



The results in this report apply to the samples analyzed in accordance with the chain of custody document. This analytical report must be reproduced in its entirety.

Eagle Environmental Consulting, Inc.
4101 Inca Street
Denver CO 80211

Dan Coloccia
Project Number: [none]
Project: Wandell E Unit #1

Wandell E Unit #1-SB-04 @ 7.5-10'-0'
2/6/2015 10:33:00AM

Analyte	Result	Reporting Limit	Units	Dilution	Batch	Prepared	Analyzed	Notes
---------	--------	-----------------	-------	----------	-------	----------	----------	-------

GEL Laboratories, LLC
X502068-04 (Soil)

SVOC by 8270D/3541

Dibenzo(a,h)anthracene	ND	0.0369	mg/kg dry	1	1456217	02/09/2015	02/11/2015	U
Dibenzofuran	ND	0.369	"	"	"	"	"	U
Diethylphthalate	ND	0.369	"	"	"	"	"	U
Di-n-butylphthalate	ND	0.369	"	"	"	"	"	U
Diphenylamine	ND	0.369	"	"	"	"	"	U
Fluoranthene	ND	0.0369	"	"	"	"	"	U
Fluorene	ND	0.0369	"	"	"	"	"	U
Hexachlorobenzene	ND	0.369	"	"	"	"	"	U
Hexachlorobutadiene	ND	0.369	"	"	"	"	"	U
Hexachlorocyclopentadiene	ND	0.369	"	"	"	"	"	U
Hexachloroethane	ND	0.369	"	"	"	"	"	U
Indeno(1,2,3-cd)pyrene	ND	0.0369	"	"	"	"	"	U
Isophorone	ND	0.369	"	"	"	"	"	U
m,p-Cresols	ND	0.369	"	"	"	"	"	U
Naphthalene	ND	0.0369	"	"	"	"	"	U
Nitrobenzene	ND	0.369	"	"	"	"	"	U
N-Methyl-N-nitrosomethylamine	ND	0.369	"	"	"	"	"	U
N-Nitrosodipropylamine	ND	0.369	"	"	"	"	"	U
o-Cresol	ND	0.369	"	"	"	"	"	U

Origins Laboratory, Inc.



The results in this report apply to the samples analyzed in accordance with the chain of custody document. This analytical report must be reproduced in its entirety.

Eagle Environmental Consulting, Inc.
4101 Inca Street
Denver CO 80211

Dan Coloccia
Project Number: [none]
Project: Wandell E Unit #1

Wandell E Unit #1-SB-04 @ 7.5-10'-0'
2/6/2015 10:33:00AM

Analyte	Result	Reporting Limit	Units	Dilution	Batch	Prepared	Analyzed	Notes
---------	--------	-----------------	-------	----------	-------	----------	----------	-------

GEL Laboratories, LLC
X502068-04 (Soil)

SVOC by 8270D/3541

Pentachlorophenol	ND	0.369	mg/kg dry	1	1456217	02/09/2015	02/11/2015	U
Phenol	ND	0.369	"	"	"	"	"	U
Phorate	ND	0.369	"	"	"	"	"	U
Pyrene	ND	0.0369	"	"	"	"	"	U
Pyridine	ND	0.369	"	"	"	"	"	U

Surrogate: 2,4,6-Tribromophenol	45 %	20-122			"	"	"	
Surrogate: 2-Fluorobiphenyl	86 %	25-100			"	"	"	
Surrogate: 2-Fluorophenol	79 %	23-107			"	"	"	
Surrogate: Nitrobenzene-d5	83 %	21-103			"	"	"	
Surrogate: Phenol-d5	79 %	25-108			"	"	"	
Surrogate: p-Terphenyl-d14	91 %	31-124			"	"	"	

Volatiles by SW846 8260C

1,1,1,2-Tetrachloroethane	ND	0.00221	mg/kg dry	1	1456783	02/11/2015	02/11/2015	U
1,1,1-Trichloroethane	ND	0.00221	"	"	"	"	"	U
1,1,2,2-Tetrachloroethane	ND	0.00221	"	"	"	"	"	U
1,1,2-Trichloroethane	ND	0.00221	"	"	"	"	"	U
1,1-Dichloroethane	ND	0.00221	"	"	"	"	"	U
1,1-Dichloroethylene	ND	0.00221	"	"	"	"	"	U
1,2,3-Trichloropropane	ND	0.00221	"	"	"	"	"	U
1,2-Dibromo-3-chloropropane	ND	0.00221	"	"	"	"	"	U

Origins Laboratory, Inc.



The results in this report apply to the samples analyzed in accordance with the chain of custody document. This analytical report must be reproduced in its entirety.

Eagle Environmental Consulting, Inc.
4101 Inca Street
Denver CO 80211

Dan Coloccia
Project Number: [none]
Project: Wandell E Unit #1

Wandell E Unit #1-SB-04 @ 7.5-10'-0'
2/6/2015 10:33:00AM

Analyte	Result	Reporting Limit	Units	Dilution	Batch	Prepared	Analyzed	Notes
---------	--------	-----------------	-------	----------	-------	----------	----------	-------

GEL Laboratories, LLC
X502068-04 (Soil)

Volatiles by SW846 8260C

1,2-Dibromoethane	ND	0.00221	mg/kg dry	1	1456783	02/11/2015	02/11/2015	U
1,2-Dichlorobenzene	ND	0.00221	"	"	"	"	"	U
1,2-Dichloroethane	ND	0.00221	"	"	"	"	"	U
1,2-Dichloroethylene (total)	ND	0.00443	"	"	"	"	"	U
1,2-Dichloropropane	ND	0.00221	"	"	"	"	"	U
1,3,5-Trimethylbenzene	ND	0.00221	"	"	"	"	"	U
1,3-Dichlorobenzene	ND	0.00221	"	"	"	"	"	U
1,3-Dichloropropane	ND	0.00221	"	"	"	"	"	U
1,3-Dichloropropylene	ND	0.00221	"	"	"	"	"	U
1,4-Dichlorobenzene	ND	0.00221	"	"	"	"	"	U
2-Butanone	ND	0.0111	"	"	"	"	"	U
2-Hexanone	ND	0.0111	"	"	"	"	"	U
4-Methyl-2-pentanone	ND	0.0111	"	"	"	"	"	U
Acetone	ND	0.0111	"	"	"	"	"	U
Benzene	ND	0.00221	"	"	"	"	"	U
Bromobenzene	ND	0.00221	"	"	"	"	"	U
Bromodichloromethane	ND	0.00221	"	"	"	"	"	U
Bromoform	ND	0.00221	"	"	"	"	"	U
Bromomethane	ND	0.00221	"	"	"	"	"	U

Origins Laboratory, Inc.



The results in this report apply to the samples analyzed in accordance with the chain of custody document. This analytical report must be reproduced in its entirety.

Eagle Environmental Consulting, Inc.
4101 Inca Street
Denver CO 80211

Dan Coloccia
Project Number: [none]
Project: Wandell E Unit #1

Wandell E Unit #1-SB-04 @ 7.5-10'-0'
2/6/2015 10:33:00AM

Analyte	Result	Reporting Limit	Units	Dilution	Batch	Prepared	Analyzed	Notes
---------	--------	--------------------	-------	----------	-------	----------	----------	-------

GEL Laboratories, LLC
X502068-04 (Soil)

Volatiles by SW846 8260C

Carbon disulfide	ND	0.0111	mg/kg dry	1	1456783	02/11/2015	02/11/2015	U
Carbon tetrachloride	ND	0.00221	"	"	"	"	"	U
Chlorobenzene	ND	0.00221	"	"	"	"	"	U
Chloroform	ND	0.00221	"	"	"	"	"	U
cis-1,2-Dichloroethylene	ND	0.00221	"	"	"	"	"	U
Dibromochloromethane	ND	0.00221	"	"	"	"	"	U
Dichlorodifluoromethane	ND	0.00221	"	"	"	"	"	U
Ethyl acetate	ND	0.0111	"	"	"	"	"	U
Ethyl ether	ND	0.00221	"	"	"	"	"	U
Ethyl methacrylate	ND	0.0111	"	"	"	"	"	U
Ethylbenzene	ND	0.00221	"	"	"	"	"	U
Methylene chloride	ND	0.00553	"	"	"	"	"	U
n-Propylbenzene	ND	0.00221	"	"	"	"	"	U
Styrene	ND	0.00221	"	"	"	"	"	U
Tetrachloroethylene	ND	0.00221	"	"	"	"	"	U
Toluene	ND	0.00221	"	"	"	"	"	U
trans-1,2-Dichloroethylene	ND	0.00221	"	"	"	"	"	U
Trichloroethylene	ND	0.00221	"	"	"	"	"	U
Trichlorofluoromethane	ND	0.00221	"	"	"	"	"	U

Origins Laboratory, Inc.



The results in this report apply to the samples analyzed in accordance with the chain of custody document. This analytical report must be reproduced in its entirety.

Eagle Environmental Consulting, Inc.
4101 Inca Street
Denver CO 80211

Dan Coloccia
Project Number: [none]
Project: Wandell E Unit #1

Wandell E Unit #1-SB-04 @ 7.5-10'-0'
2/6/2015 10:33:00AM

Analyte	Result	Reporting Limit	Units	Dilution	Batch	Prepared	Analyzed	Notes
---------	--------	-----------------	-------	----------	-------	----------	----------	-------

GEL Laboratories, LLC
X502068-04 (Soil)

Volatiles by SW846 8260C

Trichlorotrifluoroethane	ND	0.00553	mg/kg dry	1	1456783	02/11/2015	02/11/2015	U
Vinyl acetate	ND	0.00553	"	"	"	"	"	U
Vinyl chloride	ND	0.00221	"	"	"	"	"	U
Xylenes (total)	ND	0.00664	"	"	"	"	"	U

Surrogate: 1,2-Dichloroethane-d4	103 %	70-128			"	"	"	
Surrogate: Bromofluorobenzene	106 %	63-138			"	"	"	
Surrogate: Toluene-d8	93 %	80-120			"	"	"	

Origins Laboratory, Inc.



The results in this report apply to the samples analyzed in accordance with the chain of custody document. This analytical report must be reproduced in its entirety.

Eagle Environmental Consulting, Inc.
4101 Inca Street
Denver CO 80211

Dan Coloccia
Project Number: [none]
Project: Wandell E Unit #1

Wandell E Unit #1-SB-05 @ 7.5-10'-0'
2/6/2015 10:51:00AM

Analyte	Result	Reporting Limit	Units	Dilution	Batch	Prepared	Analyzed	Notes
---------	--------	-----------------	-------	----------	-------	----------	----------	-------

GEL Laboratories, LLC
X502068-05 (Soil)

Anions by EPA 300.0

Nitrate	1.84	1.10	mg/kg dry	1	1456628	02/10/2015	02/10/2015	
Nitrite	ND	1.10	"	"	"	"	"	U

Cyanide by SW9012B

Cyanide, Total	ND	259	ug/kg dry	1	1455535	"	02/10/2015	U
----------------	----	-----	-----------	---	---------	---	------------	---

Explosives by 8330

2,4,6-Trinitrotoluene	ND	149	ug/kg	2	1457824	02/16/2015	02/17/2015	U
2,4-Dinitrotoluene	ND	149	"	"	"	"	"	U
2,6-Dinitrotoluene	ND	149	"	"	"	"	"	U
2-Amino-4,6-dinitrotoluene	ND	149	"	"	"	"	"	U
4-Amino-2,6-dinitrotoluene	ND	149	"	"	"	"	"	U
p-Nitrotoluene	ND	149	"	"	"	"	"	U
Tetryl	ND	149	"	"	"	"	"	U

Surrogate: 3,4-Dinitrotoluene	96 %	60-149			"	"	"	
-------------------------------	------	--------	--	--	---	---	---	--

Glycols by SW846 8015C

Ethylene glycol	ND	51.1	mg/kg dry	1	1457755	02/13/2015	02/14/2015	U
-----------------	----	------	-----------	---	---------	------------	------------	---

Origins Laboratory, Inc.



The results in this report apply to the samples analyzed in accordance with the chain of custody document. This analytical report must be reproduced in its entirety.

Eagle Environmental Consulting, Inc.
4101 Inca Street
Denver CO 80211

Dan Coloccia
Project Number: [none]
Project: Wandell E Unit #1

Wandell E Unit #1-SB-05 @ 7.5-10'-0'
2/6/2015 10:51:00AM

Analyte	Result	Reporting Limit	Units	Dilution	Batch	Prepared	Analyzed	Notes
---------	--------	-----------------	-------	----------	-------	----------	----------	-------

GEL Laboratories, LLC
X502068-05 (Soil)

Herbicides by 8151A

2,4,5-T	ND	0.00549	mg/kg dry	1	1456670	02/11/2015	02/13/2015	U
2,4,5-TP	ND	0.00549	"	"	"	"	"	U
2,4-D	ND	0.00549	"	"	"	"	"	U
2,4-DB	ND	0.00549	"	"	"	"	"	U
Dalapon	ND	0.110	"	"	"	"	"	U
Dinoseb	ND	0.00549	"	"	"	"	"	U
MCPA	ND	1.10	"	"	"	"	"	U
MCPP	ND	1.10	"	"	"	"	"	U

Surrogate: 2,4-Dichlorophenylacetic acid 128 % 33-143 " " "

Mercury by 7471 Cold Vapor

Mercury	ND	0.0129	mg/kg dry	1	1456601	02/10/2015	02/11/2015	U
---------	----	--------	-----------	---	---------	------------	------------	---

Metals by SW846 3050B/6010C

Aluminum	1460	20.8	mg/kg dry	1	1456460	"	02/11/2015	
Antimony	0.724	1.04	"	"	"	"	"	J
Arsenic	1.16	3.13	"	"	"	"	"	J
Barium	23.9	0.521	"	"	"	"	"	
Beryllium	0.119	0.521	"	"	"	"	"	J
Cadmium	ND	0.521	"	"	"	"	"	U

Origins Laboratory, Inc.



The results in this report apply to the samples analyzed in accordance with the chain of custody document. This analytical report must be reproduced in its entirety.

Eagle Environmental Consulting, Inc.
4101 Inca Street
Denver CO 80211

Dan Coloccia
Project Number: [none]
Project: Wandell E Unit #1

Wandell E Unit #1-SB-05 @ 7.5-10'-0'
2/6/2015 10:51:00AM

Analyte	Result	Reporting Limit	Units	Dilution	Batch	Prepared	Analyzed	Notes
---------	--------	--------------------	-------	----------	-------	----------	----------	-------

GEL Laboratories, LLC
X502068-05 (Soil)

Metals by SW846 3050B/6010C

Chromium	1.98	0.521	mg/kg dry	1	1456460	02/10/2015	02/11/2015	
Cobalt	0.848	0.521	"	"	"	"	"	
Copper	2.07	1.04	"	"	"	"	"	
Iron	2320	26.1	"	"	"	"	"	
Lead	4.05	1.04	"	"	"	"	"	
Manganese	18.0	1.04	"	"	"	"	"	
Nickel	1.42	0.521	"	"	"	"	"	
Selenium	ND	3.13	"	"	"	"	"	U
Silver	ND	0.521	"	"	"	"	"	U
Thallium	ND	2.08	"	"	"	"	"	U
Vanadium	4.50	0.521	"	"	"	"	"	
Zinc	9.06	1.04	"	"	"	"	"	

Metals by SW846_7196A

Hexavalent Chromium	0.290	0.427	mg/kg dry	1	1456774	02/13/2015	02/12/2015	J
---------------------	-------	-------	-----------	---	---------	------------	------------	---

PCBs by SW846 3541/8082A

Aroclor-1016	ND	0.00366	mg/kg dry	1	1456409	02/10/2015	02/11/2015	U
Aroclor-1254	ND	0.00366	"	"	"	"	"	U
Aroclor-1260	ND	0.00366	"	"	"	"	"	U
Aroclor-Total	ND	0.00366	"	"	"	"	"	U

Origins Laboratory, Inc.



The results in this report apply to the samples analyzed in accordance with the chain of custody document. This analytical report must be reproduced in its entirety.

Eagle Environmental Consulting, Inc.
4101 Inca Street
Denver CO 80211

Dan Coloccia
Project Number: [none]
Project: Wandell E Unit #1

Wandell E Unit #1-SB-05 @ 7.5-10'-0'
2/6/2015 10:51:00AM

Analyte	Result	Reporting Limit	Units	Dilution	Batch	Prepared	Analyzed	Notes
---------	--------	-----------------	-------	----------	-------	----------	----------	-------

GEL Laboratories, LLC
X502068-05 (Soil)

PCBs by SW846 3541/8082A

Surrogate: 4cmx	87 %	29-106			1456409	02/10/2015	02/11/2015	
Surrogate: Decachlorobiphenyl	100 %	25-131			"	"	"	

Pesticides by 8081B/3541

4,4'-DDD	ND	0.00146	mg/kg dry	1	1456428	"	02/10/2015	U
4,4'-DDE	ND	0.00146	"	"	"	"	"	U
4,4'-DDT	ND	0.00146	"	"	"	"	"	U
Aldrin	ND	0.000729	"	"	"	"	"	U
alpha-BHC	ND	0.000729	"	"	"	"	"	U
beta-BHC	ND	0.000729	"	"	"	"	"	U
Chlordane	ND	0.00912	"	"	"	"	"	U
Dieldrin	ND	0.00146	"	"	"	"	"	U
Endosulfan I	ND	0.000729	"	"	"	"	"	U
Endosulfan II	ND	0.00146	"	"	"	"	"	U
Endosulfan sulfate	ND	0.00146	"	"	"	"	"	U
Endrin	ND	0.00146	"	"	"	"	"	U
Endrin aldehyde	ND	0.00146	"	"	"	"	"	U
gamma-BHC (Lindane)	ND	0.000729	"	"	"	"	"	U
Heptachlor	ND	0.000729	"	"	"	"	"	U

Origins Laboratory, Inc.



The results in this report apply to the samples analyzed in accordance with the chain of custody document. This analytical report must be reproduced in its entirety.

Eagle Environmental Consulting, Inc.
4101 Inca Street
Denver CO 80211

Dan Coloccia
Project Number: [none]
Project: Wandell E Unit #1

Wandell E Unit #1-SB-05 @ 7.5-10'-0"
2/6/2015 10:51:00AM

Analyte	Result	Reporting Limit	Units	Dilution	Batch	Prepared	Analyzed	Notes
---------	--------	--------------------	-------	----------	-------	----------	----------	-------

GEL Laboratories, LLC
X502068-05 (Soil)

Pesticides by 8081B/3541

Heptachlor epoxide	ND	0.000729	mg/kg dry	1	1456428	02/10/2015	02/10/2015	U
Methoxychlor	ND	0.00729	"	"	"	"	"	U
Toxaphene	ND	0.0182	"	"	"	"	"	U

Surrogate: 4cmx	63 %	27-124			"	"	"	
Surrogate: Decachlorobiphenyl	66 %	31-131			"	"	"	

Solvent Scan by SW846 8015C

Hexane	ND	46500	ug/kg dry	1	1457752	02/13/2015	02/13/2015	U
--------	----	-------	-----------	---	---------	------------	------------	---

SVOC by 8270D/3541

1,2,4-Trichlorobenzene	ND	0.366	mg/kg dry	1	1456217	02/09/2015	02/11/2015	U
1,2-Dichlorobenzene	ND	0.366	"	"	"	"	"	U
1,4-Dinitrobenzene	ND	0.366	"	"	"	"	"	U
1,4-Dioxane	ND	0.366	"	"	"	"	"	U
1-Methylnaphthalene	ND	0.0366	"	"	"	"	"	U
2,4,5-Trichlorophenol	ND	0.366	"	"	"	"	"	U
2,4,6-Trichlorophenol	ND	0.366	"	"	"	"	"	U
2,4-Dichlorophenol	ND	0.366	"	"	"	"	"	U
2,4-Dimethylphenol	ND	0.366	"	"	"	"	"	U

Origins Laboratory, Inc.



The results in this report apply to the samples analyzed in accordance with the chain of custody document. This analytical report must be reproduced in its entirety.

Eagle Environmental Consulting, Inc.
4101 Inca Street
Denver CO 80211

Dan Coloccia
Project Number: [none]
Project: Wandell E Unit #1

Wandell E Unit #1-SB-05 @ 7.5-10'-0'
2/6/2015 10:51:00AM

Analyte	Result	Reporting Limit	Units	Dilution	Batch	Prepared	Analyzed	Notes
---------	--------	-----------------	-------	----------	-------	----------	----------	-------

GEL Laboratories, LLC
X502068-05 (Soil)

SVOC by 8270D/3541

2,4-Dinitrophenol	ND	0.732	mg/kg dry	1	1456217	02/09/2015	02/11/2015	U
2-Chloronaphthalene	ND	0.0366	"	"	"	"	"	U
2-Chlorophenol	ND	0.366	"	"	"	"	"	U
2-Methylnaphthalene	ND	0.0366	"	"	"	"	"	U
3,3'-Dichlorobenzidine	ND	0.366	"	"	"	"	"	U
4-Nitrophenol	ND	0.366	"	"	"	"	"	U
Acenaphthene	ND	0.0366	"	"	"	"	"	U
Acetophenone	ND	0.366	"	"	"	"	"	U
Anthracene	ND	0.0366	"	"	"	"	"	U
Benzo(a)anthracene	ND	0.0366	"	"	"	"	"	U
Benzo(a)pyrene	ND	0.0366	"	"	"	"	"	U
Benzo(b)fluoranthene	ND	0.0366	"	"	"	"	"	U
Benzo(k)fluoranthene	ND	0.0366	"	"	"	"	"	U
Benzoic acid	ND	0.732	"	"	"	"	"	U
Benzyl alcohol	ND	0.366	"	"	"	"	"	U
bis(2-Chloro-1-methylethyl)ether	ND	0.366	"	"	"	"	"	U
bis(2-Ethylhexyl)phthalate	ND	0.366	"	"	"	"	"	U
Butylbenzylphthalate	ND	0.366	"	"	"	"	"	U
Chrysene	ND	0.0366	"	"	"	"	"	U

Origins Laboratory, Inc.



The results in this report apply to the samples analyzed in accordance with the chain of custody document. This analytical report must be reproduced in its entirety.

Eagle Environmental Consulting, Inc.
4101 Inca Street
Denver CO 80211

Dan Coloccia
Project Number: [none]
Project: Wandell E Unit #1

Wandell E Unit #1-SB-05 @ 7.5-10'-0'
2/6/2015 10:51:00AM

Analyte	Result	Reporting Limit	Units	Dilution	Batch	Prepared	Analyzed	Notes
---------	--------	--------------------	-------	----------	-------	----------	----------	-------

GEL Laboratories, LLC
X502068-05 (Soil)

SVOC by 8270D/3541

Dibenzo(a,h)anthracene	ND	0.0366	mg/kg dry	1	1456217	02/09/2015	02/11/2015	U
Dibenzofuran	ND	0.366	"	"	"	"	"	U
Diethylphthalate	ND	0.366	"	"	"	"	"	U
Di-n-butylphthalate	ND	0.366	"	"	"	"	"	U
Diphenylamine	ND	0.366	"	"	"	"	"	U
Fluoranthene	ND	0.0366	"	"	"	"	"	U
Fluorene	ND	0.0366	"	"	"	"	"	U
Hexachlorobenzene	ND	0.366	"	"	"	"	"	U
Hexachlorobutadiene	ND	0.366	"	"	"	"	"	U
Hexachlorocyclopentadiene	ND	0.366	"	"	"	"	"	U
Hexachloroethane	ND	0.366	"	"	"	"	"	U
Indeno(1,2,3-cd)pyrene	ND	0.0366	"	"	"	"	"	U
Isophorone	ND	0.366	"	"	"	"	"	U
m,p-Cresols	ND	0.366	"	"	"	"	"	U
Naphthalene	ND	0.0366	"	"	"	"	"	U
Nitrobenzene	ND	0.366	"	"	"	"	"	U
N-Methyl-N-nitrosomethylamine	ND	0.366	"	"	"	"	"	U
N-Nitrosodipropylamine	ND	0.366	"	"	"	"	"	U
o-Cresol	ND	0.366	"	"	"	"	"	U

Origins Laboratory, Inc.



The results in this report apply to the samples analyzed in accordance with the chain of custody document. This analytical report must be reproduced in its entirety.

Eagle Environmental Consulting, Inc.
4101 Inca Street
Denver CO 80211

Dan Coloccia
Project Number: [none]
Project: Wandell E Unit #1

Wandell E Unit #1-SB-05 @ 7.5-10'-0'
2/6/2015 10:51:00AM

Analyte	Result	Reporting Limit	Units	Dilution	Batch	Prepared	Analyzed	Notes
---------	--------	-----------------	-------	----------	-------	----------	----------	-------

GEL Laboratories, LLC
X502068-05 (Soil)

SVOC by 8270D/3541

Pentachlorophenol	ND	0.366	mg/kg dry	1	1456217	02/09/2015	02/11/2015	U
Phenol	ND	0.366	"	"	"	"	"	U
Phorate	ND	0.366	"	"	"	"	"	U
Pyrene	ND	0.0366	"	"	"	"	"	U
Pyridine	ND	0.366	"	"	"	"	"	U

Surrogate: 2,4,6-Tribromophenol	58 %	20-122			"	"	"	
Surrogate: 2-Fluorobiphenyl	69 %	25-100			"	"	"	
Surrogate: 2-Fluorophenol	81 %	23-107			"	"	"	
Surrogate: Nitrobenzene-d5	71 %	21-103			"	"	"	
Surrogate: Phenol-d5	75 %	25-108			"	"	"	
Surrogate: p-Terphenyl-d14	85 %	31-124			"	"	"	

Volatiles by SW846 8260C

1,1,1,2-Tetrachloroethane	ND	0.0022	mg/kg dry	1	1456783	02/11/2015	02/11/2015	U
1,1,1-Trichloroethane	ND	0.0022	"	"	"	"	"	U
1,1,2,2-Tetrachloroethane	ND	0.0022	"	"	"	"	"	U
1,1,2-Trichloroethane	ND	0.0022	"	"	"	"	"	U
1,1-Dichloroethane	ND	0.0022	"	"	"	"	"	U
1,1-Dichloroethylene	ND	0.0022	"	"	"	"	"	U
1,2,3-Trichloropropane	ND	0.0022	"	"	"	"	"	U
1,2-Dibromo-3-chloropropane	ND	0.0022	"	"	"	"	"	U

Origins Laboratory, Inc.



The results in this report apply to the samples analyzed in accordance with the chain of custody document. This analytical report must be reproduced in its entirety.

Eagle Environmental Consulting, Inc.
4101 Inca Street
Denver CO 80211

Dan Coloccia
Project Number: [none]
Project: Wandell E Unit #1

Wandell E Unit #1-SB-05 @ 7.5-10'-0'
2/6/2015 10:51:00AM

Analyte	Result	Reporting Limit	Units	Dilution	Batch	Prepared	Analyzed	Notes
---------	--------	--------------------	-------	----------	-------	----------	----------	-------

GEL Laboratories, LLC
X502068-05 (Soil)

Volatiles by SW846 8260C

1,2-Dibromoethane	ND	0.0022	mg/kg dry	1	1456783	02/11/2015	02/11/2015	U
1,2-Dichlorobenzene	ND	0.0022	"	"	"	"	"	U
1,2-Dichloroethane	ND	0.0022	"	"	"	"	"	U
1,2-Dichloroethylene (total)	ND	0.00439	"	"	"	"	"	U
1,2-Dichloropropane	ND	0.0022	"	"	"	"	"	U
1,3,5-Trimethylbenzene	ND	0.0022	"	"	"	"	"	U
1,3-Dichlorobenzene	ND	0.0022	"	"	"	"	"	U
1,3-Dichloropropane	ND	0.0022	"	"	"	"	"	U
1,3-Dichloropropylene	ND	0.0022	"	"	"	"	"	U
1,4-Dichlorobenzene	ND	0.0022	"	"	"	"	"	U
2-Butanone	ND	0.011	"	"	"	"	"	U
2-Hexanone	ND	0.011	"	"	"	"	"	U
4-Methyl-2-pentanone	ND	0.011	"	"	"	"	"	U
Acetone	ND	0.011	"	"	"	"	"	U
Benzene	ND	0.0022	"	"	"	"	"	U
Bromobenzene	ND	0.0022	"	"	"	"	"	U
Bromodichloromethane	ND	0.0022	"	"	"	"	"	U
Bromoform	ND	0.0022	"	"	"	"	"	U
Bromomethane	ND	0.0022	"	"	"	"	"	U

Origins Laboratory, Inc.



The results in this report apply to the samples analyzed in accordance with the chain of custody document. This analytical report must be reproduced in its entirety.

Eagle Environmental Consulting, Inc.
4101 Inca Street
Denver CO 80211

Dan Coloccia
Project Number: [none]
Project: Wandell E Unit #1

Wandell E Unit #1-SB-05 @ 7.5-10'-0'
2/6/2015 10:51:00AM

Analyte	Result	Reporting Limit	Units	Dilution	Batch	Prepared	Analyzed	Notes
---------	--------	--------------------	-------	----------	-------	----------	----------	-------

GEL Laboratories, LLC
X502068-05 (Soil)

Volatiles by SW846 8260C

Carbon disulfide	ND	0.011	mg/kg dry	1	1456783	02/11/2015	02/11/2015	U
Carbon tetrachloride	ND	0.0022	"	"	"	"	"	U
Chlorobenzene	ND	0.0022	"	"	"	"	"	U
Chloroform	ND	0.0022	"	"	"	"	"	U
cis-1,2-Dichloroethylene	ND	0.0022	"	"	"	"	"	U
Dibromochloromethane	ND	0.0022	"	"	"	"	"	U
Dichlorodifluoromethane	ND	0.0022	"	"	"	"	"	U
Ethyl acetate	ND	0.011	"	"	"	"	"	U
Ethyl ether	ND	0.0022	"	"	"	"	"	U
Ethyl methacrylate	ND	0.011	"	"	"	"	"	U
Ethylbenzene	ND	0.0022	"	"	"	"	"	U
Methylene chloride	ND	0.00549	"	"	"	"	"	U
n-Propylbenzene	ND	0.0022	"	"	"	"	"	U
Styrene	ND	0.0022	"	"	"	"	"	U
Tetrachloroethylene	ND	0.0022	"	"	"	"	"	U
Toluene	ND	0.0022	"	"	"	"	"	U
trans-1,2-Dichloroethylene	ND	0.0022	"	"	"	"	"	U
Trichloroethylene	ND	0.0022	"	"	"	"	"	U
Trichlorofluoromethane	ND	0.0022	"	"	"	"	"	U

Origins Laboratory, Inc.



The results in this report apply to the samples analyzed in accordance with the chain of custody document. This analytical report must be reproduced in its entirety.

Eagle Environmental Consulting, Inc.
4101 Inca Street
Denver CO 80211

Dan Coloccia
Project Number: [none]
Project: Wandell E Unit #1

Wandell E Unit #1-SB-05 @ 7.5-10'-0'
2/6/2015 10:51:00AM

Analyte	Result	Reporting Limit	Units	Dilution	Batch	Prepared	Analyzed	Notes
---------	--------	--------------------	-------	----------	-------	----------	----------	-------

GEL Laboratories, LLC
X502068-05 (Soil)

Volatiles by SW846 8260C

Trichlorotrifluoroethane	ND	0.00549	mg/kg dry	1	1456783	02/11/2015	02/11/2015	U
Vinyl acetate	ND	0.00549	"	"	"	"	"	U
Vinyl chloride	ND	0.0022	"	"	"	"	"	U
Xylenes (total)	ND	0.00659	"	"	"	"	"	U

Surrogate: 1,2-Dichloroethane-d4	100 %	70-128			"	"	"	
Surrogate: Bromofluorobenzene	104 %	63-138			"	"	"	
Surrogate: Toluene-d8	91 %	80-120			"	"	"	

Origins Laboratory, Inc.



The results in this report apply to the samples analyzed in accordance with the chain of custody document. This analytical report must be reproduced in its entirety.

Eagle Environmental Consulting, Inc.
4101 Inca Street
Denver CO 80211

Dan Coloccia
Project Number: [none]
Project: Wandell E Unit #1

Explosives by 8330 - Quality Control GEL Laboratories, LLC

Analyte	Result	Reporting Limit	Units	Spike Level	Source Result	%REC	%REC Limits	RPD	RPD Limit	Notes
---------	--------	-----------------	-------	-------------	---------------	------	-------------	-----	-----------	-------

Batch 1457824 - SW846 8330 PREP

BLANK (1203264874-BLK)

Prepared: 02/16/2015 Analyzed: 02/17/2015

p-Nitrotoluene	ND	150	ug/kg				-			U
Tetryl	ND	150	"				-			U
4-Amino-2,6-dinitrotoluene	ND	150	"				-			U
2-Amino-4,6-dinitrotoluene	ND	150	"				-			U
2,6-Dinitrotoluene	ND	150	"				-			U
2,4-Dinitrotoluene	ND	150	"				-			U
2,4,6-Trinitrotoluene	ND	150	"				-			U

Surrogate: 3,4-Dinitrotoluene 2350 " 2500 94.1 60-149

LCS (1203264875-BKS)

Prepared: 02/16/2015 Analyzed: 02/17/2015

2,4-Dinitrotoluene	4730	149	ug/kg	4980		95.1	68-116			
p-Nitrotoluene	4450	149	"	4980		89.3	67-125			
2-Amino-4,6-dinitrotoluene	4930	149	"	4980		99.2	68-125			
2,6-Dinitrotoluene	4730	149	"	4980		95.1	68-128			
4-Amino-2,6-dinitrotoluene	4540	149	"	4980		91.2	67-117			
Tetryl	4910	149	"	4980		98.7	66-121			
2,4,6-Trinitrotoluene	4960	149	"	4980		99.7	64-115			

Surrogate: 3,4-Dinitrotoluene 2340 " 2490 94.1 60-149

MS (1203264876 S)

Source: X502068-01

Prepared: 02/16/2015 Analyzed: 02/17/2015

4-Amino-2,6-dinitrotoluene	4820	150	ug/kg	5000	<50.0	96.5	57-140			
p-Nitrotoluene	4560	150	"	5000	<50.0	91.1	57-109			
2-Amino-4,6-dinitrotoluene	4990	150	"	5000	<50.0	99.8	57-110			
Tetryl	4990	150	"	5000	<50.0	99.8	45-140			
2,4-Dinitrotoluene	4540	150	"	5000	<50.0	90.9	55-109			
2,6-Dinitrotoluene	4670	150	"	5000	<50.0	93.3	59-112			
2,4,6-Trinitrotoluene	4980	150	"	5000	<50.0	99.6	52-106			

Origins Laboratory, Inc.



The results in this report apply to the samples analyzed in accordance with the chain of custody document. This analytical report must be reproduced in its entirety.

Eagle Environmental Consulting, Inc.
4101 Inca Street
Denver CO 80211

Dan Coloccia
Project Number: [none]
Project: Wandell E Unit #1

Explosives by 8330 - Quality Control GEL Laboratories, LLC

Analyte	Result	Reporting Limit	Units	Spike Level	Source Result	%REC	%REC Limits	RPD	RPD Limit	Notes
Batch 1457824 - SW846 8330 PREP										
MS (1203264876 S)		Source: X502068-01			Prepared: 02/16/2015 Analyzed: 02/17/2015					
Surrogate: 3,4-Dinitrotoluene	2350		ug/kg	2500	2460	93.9	60-149			
MSD (1203264877 SD)		Source: X502068-01			Prepared: 02/16/2015 Analyzed: 02/17/2015					
2,4,6-Trinitrotoluene	4960	149	ug/kg	4980	<49.8	99.6	52-106	0.454	30	
2-Amino-4,6-dinitrotoluene	4920	149	"	4980	<49.8	98.8	57-110	1.44	30	
4-Amino-2,6-dinitrotoluene	4760	149	"	4980	<49.8	95.7	57-140	1.27	30	
p-Nitrotoluene	4650	149	"	4980	<49.8	93.4	57-109	2.01	30	
Tetryl	4960	149	"	4980	<49.8	99.6	45-140	0.727	30	
2,6-Dinitrotoluene	4710	149	"	4980	<49.8	94.6	59-112	0.864	30	
2,4-Dinitrotoluene	4600	149	"	4980	<49.8	92.4	55-109	1.17	30	
Surrogate: 3,4-Dinitrotoluene	2360		"	2490	2460	94.7	60-149			

Origins Laboratory, Inc.



The results in this report apply to the samples analyzed in accordance with the chain of custody document. This analytical report must be reproduced in its entirety.

Eagle Environmental Consulting, Inc.
4101 Inca Street
Denver CO 80211

Dan Coloccia
Project Number: [none]
Project: Wandell E Unit #1

Anions by EPA 300.0 - Quality Control GEL Laboratories, LLC

Analyte	Result	Reporting Limit	Units	Spike Level	Source Result	%REC	%REC Limits	RPD	RPD Limit	Notes
Batch 1456628 - EPA 300.0 PREP										
BLANK (1203261633-BLK)					Prepared: 02/10/2015 Analyzed: 02/10/2015					
Nitrate	ND	1.00	mg/kg				-			U
Nitrite	ND	1.00	"				-			U
LCS (1203261634-BKS)					Prepared: 02/10/2015 Analyzed: 02/10/2015					
Nitrate	24.9	1.00	mg/kg	25.0		99.5	90-110			
Nitrite	25.1	1.00	"	25.0		100	90-110			
DUP (1203261635 D)					Source: X502068-01		Prepared: 02/10/2015 Analyzed: 02/10/2015			
Nitrate	18.2	1.13	mg/kg dry		18.3		0-20	0.466	20	
Nitrite	ND	1.13	"		<0.374		0-20	0.00	20	U
MS (1203261636 S)					Source: X502068-01		Prepared: 02/10/2015 Analyzed: 02/10/2015			
Nitrate	46.5	1.13	mg/kg dry	28.3	18.3	99.6	90-110			
Nitrite	27.9	1.13	"	28.3	<0.374	98.3	90-110			

Origins Laboratory, Inc.



The results in this report apply to the samples analyzed in accordance with the chain of custody document. This analytical report must be reproduced in its entirety.

Eagle Environmental Consulting, Inc.
4101 Inca Street
Denver CO 80211

Dan Coloccia
Project Number: [none]
Project: Wandell E Unit #1

Glycols by SW846 8015C - Quality Control
GEL Laboratories, LLC

Analyte	Result	Reporting Limit	Units	Spike Level	Source Result	%REC	%REC Limits	RPD	RPD Limit	Notes
Batch 1457755 - SW846 8015C Glycol										
BLANK (1203264760-BLK)					Prepared: 02/13/2015 Analyzed: 02/14/2015					
Ethylene glycol	ND	10.0	mg/kg				-			U
LCS (1203264761-BKS)					Prepared: 02/13/2015 Analyzed: 02/14/2015					
Ethylene glycol	46.9	10.0	mg/kg	50.0		93.7	80-117			
DUP (1203264762 D)					Prepared: 02/13/2015 Analyzed: 02/14/2015					
Source: X502068-01										
Ethylene glycol	ND	46.5	mg/kg dry		<15.3		0-30	0.00	30	U

Origins Laboratory, Inc.



The results in this report apply to the samples analyzed in accordance with the chain of custody document. This analytical report must be reproduced in its entirety.

Eagle Environmental Consulting, Inc.
4101 Inca Street
Denver CO 80211

Dan Coloccia
Project Number: [none]
Project: Wandell E Unit #1

Herbicides by 8151A - Quality Control GEL Laboratories, LLC

Analyte	Result	Reporting Limit	Units	Spike Level	Source Result	%REC	%REC Limits	RPD	RPD Limit	Notes
---------	--------	-----------------	-------	-------------	---------------	------	-------------	-----	-----------	-------

Batch 1456670 - SW846 8151A

BLANK (1203261744-BLK)

Prepared: 02/11/2015 Analyzed: 02/12/2015

MCPP	ND	1.00	mg/kg				-			U
2,4,5-T	ND	0.005	"				-			U
2,4,5-TP	ND	0.005	"				-			U
2,4-D	ND	0.005	"				-			U
2,4-DB	ND	0.005	"				-			U
Dalapon	ND	0.100	"				-			U
Dinoseb	ND	0.005	"				-			U
MCPA	ND	1.00	"				-			U

Surrogate:
2,4-Dichlorophenylacetic acid

0.112

"

0.100

112

33-143

LCS (1203261745-BKS)

Prepared: 02/11/2015 Analyzed: 02/12/2015

MCPA	6.41	1.00	mg/kg	4.00	160	45-123				
MCPP	9.11	1.00	"	4.00	228	40-119				EP
2,4,5-TP	0.0602	0.005	"	0.040	151	64-126				
2,4-D	0.0609	0.005	"	0.040	152	57-133				
2,4-DB	0.0637	0.005	"	0.040	159	57-141				
Dalapon	0.514	0.100	"	0.400	129	25-105				P
Dinoseb	0.0549	0.005	"	0.040	137	24-104				
2,4,5-T	0.0619	0.005	"	0.040	155	60-130				

Surrogate:
2,4-Dichlorophenylacetic acid

0.152

"

0.100

152

33-143

LCSD (1203264091-BKSD)

Prepared: 02/11/2015 Analyzed: 02/12/2015

2,4,5-TP	0.0518	0.005	mg/kg	0.040	129	64-126	15.1	30		
2,4-D	0.0491	0.005	"	0.040	123	57-133	21.4	30		
2,4-DB	0.0535	0.005	"	0.040	134	57-141	17.4	30		
Dalapon	0.416	0.0999	"	0.400	104	25-105	21.1	30		P

Origins Laboratory, Inc.



The results in this report apply to the samples analyzed in accordance with the chain of custody document. This analytical report must be reproduced in its entirety.

Eagle Environmental Consulting, Inc.
4101 Inca Street
Denver CO 80211

Dan Coloccia
Project Number: [none]
Project: Wandell E Unit #1

Herbicides by 8151A - Quality Control GEL Laboratories, LLC

Analyte	Result	Reporting Limit	Units	Spike Level	Source Result	%REC	%REC Limits	RPD	RPD Limit	Notes
Batch 1456670 - SW846 8151A										
LCSD (1203264091-BKSD)					Prepared: 02/11/2015 Analyzed: 02/12/2015					
Dinoseb	0.0421	0.005	"	0.040		105	24-104	26.3	30	
MCPP	6.35	0.999	"	4.00		159	40-119	35.6	30	P
2,4,5-T	0.0535	0.005	"	0.040		134	60-130	14.5	30	
MCPA	4.74	0.999	"	4.00		119	45-123	29.9	30	
Surrogate: 2,4-Dichlorophenylacetic acid	0.124		"	0.0999		125	33-143			

Origins Laboratory, Inc.



The results in this report apply to the samples analyzed in accordance with the chain of custody document. This analytical report must be reproduced in its entirety.

Eagle Environmental Consulting, Inc.
4101 Inca Street
Denver CO 80211

Dan Coloccia
Project Number: [none]
Project: Wandell E Unit #1

Metals by SW846 3050B/6010C - Quality Control
GEL Laboratories, LLC

Analyte	Result	Reporting Limit	Units	Spike Level	Source Result	%REC	%REC Limits	RPD	RPD Limit	Notes
---------	--------	-----------------	-------	-------------	---------------	------	-------------	-----	-----------	-------

Batch 1456460 - SW846 3050B

BLANK (1203261187-BLK)

Prepared: 02/10/2015 Analyzed: 02/11/2015

Copper	ND	0.963	mg/kg				-			U
Chromium	ND	0.482	"				-			U
Lead	ND	0.963	"				-			U
Silver	ND	0.482	"				-			U
Selenium	ND	2.89	"				-			U
Nickel	ND	0.482	"				-			U
Manganese	ND	0.963	"				-			U
Vanadium	ND	0.482	"				-			U
Cobalt	ND	0.482	"				-			U
Zinc	0.417	0.963	"				-			J
Cadmium	ND	0.482	"				-			U
Beryllium	ND	0.482	"				-			U
Barium	ND	0.482	"				-			U
Arsenic	ND	2.89	"				-			U
Antimony	0.543	0.963	"				-			J
Aluminum	ND	19.3	"				-			U
Iron	ND	24.1	"				-			U
Thallium	ND	1.93	"				-			U

LCS (1203261188-BKS)

Prepared: 02/10/2015 Analyzed: 02/11/2015

Lead	48.7	0.980	mg/kg	49.0	99.3	80-120
Manganese	48.7	0.980	"	49.0	99.4	80-120
Nickel	49.3	0.490	"	49.0	101	80-120
Selenium	48.2	2.94	"	49.0	98.4	80-120
Silver	49.1	0.490	"	49.0	100	80-120
Thallium	49.2	1.96	"	49.0	100	80-120
Vanadium	50.7	0.490	"	49.0	103	80-120

Origins Laboratory, Inc.



The results in this report apply to the samples analyzed in accordance with the chain of custody document. This analytical report must be reproduced in its entirety.

Eagle Environmental Consulting, Inc.
4101 Inca Street
Denver CO 80211

Dan Coloccia
Project Number: [none]
Project: Wandell E Unit #1

Metals by SW846 3050B/6010C - Quality Control

GEL Laboratories, LLC

Analyte	Result	Reporting Limit	Units	Spike Level	Source Result	%REC	%REC Limits	RPD	RPD Limit	Notes
---------	--------	-----------------	-------	-------------	---------------	------	-------------	-----	-----------	-------

Batch 1456460 - SW846 3050B

LCS (1203261188-BKS)

Prepared: 02/10/2015 Analyzed: 02/11/2015

Cobalt	49.3	0.490	mg/kg	49.0		101	80-120			
Iron	487	24.5	"	490		99.4	80-120			
Chromium	49.4	0.490	"	49.0		101	80-120			
Cadmium	48.7	0.490	"	49.0		99.4	80-120			
Beryllium	49.3	0.490	"	49.0		101	80-120			
Barium	49.8	0.490	"	49.0		102	80-120			
Arsenic	48.3	2.94	"	49.0		98.5	80-120			
Antimony	49.8	0.980	"	49.0		102	80-120			
Aluminum	500	19.6	"	490		102	80-120			
Zinc	48.8	0.980	"	49.0		99.6	80-120			
Copper	50.7	0.980	"	49.0		103	80-120			

DUP (1203261189 D)

Source: X502068-01

Prepared: 02/10/2015 Analyzed: 02/11/2015

Selenium	ND	3.25	mg/kg dry		<0.541		0-20	43.5	20	U
Silver	ND	0.541	"		<0.108		0-20	24.4	20	U
Aluminum	3390	21.6	"		3710		0-20	9.07	20	
Antimony	0.658	1.08	"		0.563		0-20	15.5	20	J
Arsenic	2.64	3.25	"		2.32		0-20	12.8	20	J
Barium	54.4	0.541	"		53.9		0-20	0.824	20	
Beryllium	0.294	0.541	"		0.317		0-20	7.37	20	J
Cadmium	ND	0.541	"		<0.108		0-20	20.7	20	U
Chromium	9.05	0.541	"		9.26		0-20	2.39	20	
Cobalt	2.49	0.541	"		2.53		0-20	1.64	20	
Copper	5.15	1.08	"		5.54		0-20	7.34	20	
Iron	7790	27.0	"		8490		0-20	8.61	20	
Lead	5.61	1.08	"		5.70		0-20	1.57	20	
Nickel	4.40	0.541	"		4.57		0-20	3.70	20	

Origins Laboratory, Inc.



The results in this report apply to the samples analyzed in accordance with the chain of custody document. This analytical report must be reproduced in its entirety.

Eagle Environmental Consulting, Inc.
4101 Inca Street
Denver CO 80211

Dan Coloccia
Project Number: [none]
Project: Wandell E Unit #1

Metals by SW846 3050B/6010C - Quality Control

GEL Laboratories, LLC

Analyte	Result	Reporting Limit	Units	Spike Level	Source Result	%REC	%REC Limits	RPD	RPD Limit	Notes
Batch 1456460 - SW846 3050B										
DUP (1203261189 D)		Source: X502068-01			Prepared: 02/10/2015 Analyzed: 02/11/2015					
Thallium	ND	2.16	mg/kg dry		<0.541		0-20	41.7	20	U
Vanadium	14.1	0.541	"		14.7		0-20	3.81	20	
Zinc	32.2	1.08	"		31.0		0-20	3.99	20	
Manganese	84.6	1.08	"		88.9		0-20	4.93	20	
MS (1203261190 S)		Source: X502068-01			Prepared: 02/10/2015 Analyzed: 02/11/2015					
Cadmium	53.6	0.562	mg/kg dry	56.2	<0.112	95.2	75-125			
Aluminum	7920	22.5	"	562	3710	747	75-125			
Antimony	51.6	1.12	"	56.2	0.563	90.7	75-125			
Arsenic	55.7	3.37	"	56.2	2.32	95	75-125			
Beryllium	55.8	0.562	"	56.2	0.317	98.7	75-125			
Manganese	188	1.12	"	56.2	88.9	176	75-125			N
Chromium	67.5	0.562	"	56.2	9.26	104	75-125			
Cobalt	58.2	0.562	"	56.2	2.53	98.9	75-125			
Silver	54.4	0.562	"	56.2	<0.112	96.7	75-125			
Nickel	61.3	0.562	"	56.2	4.57	101	75-125			
Barium	123	0.562	"	56.2	53.9	122	75-125			
Selenium	51.6	3.37	"	56.2	<0.562	91.8	75-125			
Copper	66.4	1.12	"	56.2	5.54	108	75-125			
Thallium	51.1	2.25	"	56.2	<0.562	90.8	75-125			
Vanadium	79.7	0.562	"	56.2	14.7	116	75-125			
Zinc	77.7	1.12	"	56.2	31.0	83.2	75-125			
Lead	59.7	1.12	"	56.2	5.70	96.1	75-125			
Iron	12500	28.1	"	562	8490	721	75-125			
PS (1203262082 S)		Source: X502068-01			Prepared: 02/10/2015 Analyzed: 02/11/2015					
Manganese	2.10	0.0113	mg/kg dry	500		209	80-120			

Origins Laboratory, Inc.



The results in this report apply to the samples analyzed in accordance with the chain of custody document. This analytical report must be reproduced in its entirety.

Eagle Environmental Consulting, Inc.
4101 Inca Street
Denver CO 80211

Dan Coloccia
Project Number: [none]
Project: Wandell E Unit #1

Metals by SW846_7196A - Quality Control GEL Laboratories, LLC

Analyte	Result	Reporting Limit	Units	Spike Level	Source Result	%REC	%REC Limits	RPD	RPD Limit	Notes
Batch 1456774 - SW846 3060A										
BLANK (1203262058-BLK)					Prepared: 02/10/2015 Analyzed: 02/12/2015					
Hexavalent Chromium	ND	0.399	mg/kg				-			U
LCS (1203262059-BKS)					Prepared: 02/10/2015 Analyzed: 02/12/2015					
Hexavalent Chromium	3.74	0.394	mg/kg	3.94		95	80-120			
ILCS (1203262060-ILCS)					Prepared: 02/10/2015 Analyzed: 02/12/2015					
Hexavalent Chromium	7.31	0.398	mg/kg	7.96		91.9	80-120			
DUP (1203262061 D)					Source: X502068-01 Prepared: 02/10/2015 Analyzed: 02/12/2015					
Hexavalent Chromium	ND	0.447	mg/kg dry		<0.134		0-50	1.17	50	U
DUP (1203262062 D)					Source: 366782002 Prepared: 02/10/2015 Analyzed: 02/12/2015					
Hexavalent Chromium	ND	0.491	mg/kg dry		<0.147		0-50	0.919	50	U
MS (1203262064 S)					Source: X502068-01 Prepared: 02/10/2015 Analyzed: 02/12/2015					
Hexavalent Chromium	3.58	0.449	mg/kg dry	4.49	<0.135	79.8	75-125			
MS (1203262066 S)					Source: 366782002 Prepared: 02/10/2015 Analyzed: 02/12/2015					
Hexavalent Chromium	3.75	0.494	mg/kg dry	4.94	<0.148	76	75-125			
MSD (1203262068 SD)					Source: X502068-01 Prepared: 02/10/2015 Analyzed: 02/12/2015					
Hexavalent Chromium	3.51	0.447	mg/kg dry	4.47	<0.134	78.5	75-125	2.10	30	
MSD (1203262070 SD)					Source: 366782002 Prepared: 02/10/2015 Analyzed: 02/12/2015					
Hexavalent Chromium	3.81	0.493	mg/kg dry	4.93	<0.148	77.3	75-125	1.45	30	
BLANK (1203264472-BLK)					Prepared: 02/13/2015 Analyzed: 02/12/2015					
Hexavalent Chromium	ND	0.399	mg/kg				-			U

Origins Laboratory, Inc.



The results in this report apply to the samples analyzed in accordance with the chain of custody document. This analytical report must be reproduced in its entirety.

Eagle Environmental Consulting, Inc.
4101 Inca Street
Denver CO 80211

Dan Coloccia
Project Number: [none]
Project: Wandell E Unit #1

Metals by SW846_7196A - Quality Control GEL Laboratories, LLC

Analyte	Result	Reporting Limit	Units	Spike Level	Source Result	%REC	%REC Limits	RPD	RPD Limit	Notes
Batch 1456774 - SW846 3060A										
LCS (1203264473-BKS)					Prepared: 02/13/2015 Analyzed: 02/12/2015					
Hexavalent Chromium	3.55	0.400	mg/kg	4.00		88.8	80-120			
ILCS (1203264474-ILCS)					Prepared: 02/13/2015 Analyzed: 02/12/2015					
Hexavalent Chromium	7.26	0.399	mg/kg	7.98		91	80-120			
DUP (1203264475 D)					Source: X502068-02 Prepared: 02/13/2015 Analyzed: 02/12/2015					
Hexavalent Chromium	0.200	0.438	mg/kg dry		0.202		0-50	0.904	50	J
MS (1203264477 S)					Source: X502068-02 Prepared: 02/13/2015 Analyzed: 02/12/2015					
Hexavalent Chromium	3.93	0.443	mg/kg dry	4.43	0.202	84.3	75-125			
MSD (1203264479 SD)					Source: X502068-02 Prepared: 02/13/2015 Analyzed: 02/12/2015					
Hexavalent Chromium	3.85	0.439	mg/kg dry	4.39	0.202	83.1	75-125	2.08	30	

Origins Laboratory, Inc.



The results in this report apply to the samples analyzed in accordance with the chain of custody document. This analytical report must be reproduced in its entirety.

Eagle Environmental Consulting, Inc.
4101 Inca Street
Denver CO 80211

Dan Coloccia
Project Number: [none]
Project: Wandell E Unit #1

Pesticides by 8081B/3541 - Quality Control

GEL Laboratories, LLC

Analyte	Result	Reporting Limit	Units	Spike Level	Source Result	%REC	%REC Limits	RPD	RPD Limit	Notes
---------	--------	-----------------	-------	-------------	---------------	------	-------------	-----	-----------	-------

Batch 1456428 - SW846 3541

BLANK (1203261123-BLK)

Prepared: 02/10/2015 Analyzed: 02/10/2015

Endosulfan sulfate	ND	0.00133	mg/kg				-			U
Endrin	ND	0.00133	"				-			U
Endrin aldehyde	ND	0.00133	"				-			U
gamma-BHC (Lindane)	ND	0.000666	"				-			U
Heptachlor	ND	0.000666	"				-			U
Heptachlor epoxide	ND	0.000666	"				-			U
Endosulfan II	ND	0.00133	"				-			U
Toxaphene	ND	0.0167	"				-			U
Methoxychlor	ND	0.00666	"				-			U
4,4'-DDD	ND	0.00133	"				-			U
Endosulfan I	ND	0.000666	"				-			U
4,4'-DDT	ND	0.00133	"				-			U
Aldrin	ND	0.000666	"				-			U
alpha-BHC	ND	0.000666	"				-			U
beta-BHC	ND	0.000666	"				-			U
Chlordane	ND	0.00833	"				-			U
Dieldrin	ND	0.00133	"				-			U
4,4'-DDE	ND	0.00133	"				-			U

Surrogate: Decachlorobiphenyl

0.0283

"

0.0333

85

31-131

Surrogate: 4cmx

0.0271

"

0.0333

81.3

27-124

LCS (1203261124-BKS)

Prepared: 02/10/2015 Analyzed: 02/10/2015

alpha-BHC	0.0128	0.000665	mg/kg	0.0166	76.8	42-124
beta-BHC	0.0136	0.000665	"	0.0166	81.8	44-118
4,4'-DDD	0.0372	0.00133	"	0.0416	89.4	49-123
4,4'-DDE	0.0368	0.00133	"	0.0416	88.5	46-118
4,4'-DDT	0.035	0.00133	"	0.0416	84.2	48-126

Origins Laboratory, Inc.



The results in this report apply to the samples analyzed in accordance with the chain of custody document. This analytical report must be reproduced in its entirety.

Eagle Environmental Consulting, Inc.
4101 Inca Street
Denver CO 80211

Dan Coloccia
Project Number: [none]
Project: Wandell E Unit #1

Pesticides by 8081B/3541 - Quality Control
GEL Laboratories, LLC

Analyte	Result	Reporting Limit	Units	Spike Level	Source Result	%REC	%REC Limits	RPD	RPD Limit	Notes
---------	--------	-----------------	-------	-------------	---------------	------	-------------	-----	-----------	-------

Batch 1456428 - SW846 3541

LCS (1203261124-BKS)

Prepared: 02/10/2015 Analyzed: 02/10/2015

Endosulfan I	0.0127	0.000665	mg/kg	0.0166		76.1	38-107			
Methoxychlor	0.136	0.00665	"	0.166		82	45-127			
Heptachlor epoxide	0.0132	0.000665	"	0.0166		79.5	44-116			
Heptachlor	0.0129	0.000665	"	0.0166		77.6	43-120			
gamma-BHC (Lindane)	0.0133	0.000665	"	0.0166		79.8	42-123			
Endrin aldehyde	0.0324	0.00133	"	0.0416		78.1	42-116			
Endrin	0.0352	0.00133	"	0.0416		84.7	53-135			
Aldrin	0.0128	0.000665	"	0.0166		77.2	42-114			
Endosulfan II	0.0335	0.00133	"	0.0416		80.6	43-110			
Toxaphene	ND	0.0166	"				47-115			U
Dieldrin	0.0358	0.00133	"	0.0416		86.1	45-110			
Chlordane	ND	0.00831	"				43-114			U
Endosulfan sulfate	0.0349	0.00133	"	0.0416		83.9	46-121			
Surrogate: 4cmx	0.0278		"	0.0332		83.5	27-124			
Surrogate: Decachlorobiphenyl	0.0304		"	0.0332		91.4	31-131			

MS (1203261125 S)

Source: X502068-01

Prepared: 02/10/2015 Analyzed: 02/10/2015

4,4'-DDD	0.0374	0.00151	mg/kg dry	0.0472	<0.000377	79.4	23-142			
4,4'-DDE	0.0391	0.00151	"	0.0472	<0.000377	82.9	23-133			
4,4'-DDT	0.0352	0.00151	"	0.0472	<0.000377	74.6	25-141			
Aldrin	0.0128	0.000755	"	0.0189	<0.000189	67.9	21-129			
alpha-BHC	0.0101	0.000755	"	0.0189	<0.000189	53.3	21-133			
beta-BHC	0.0137	0.000755	"	0.0189	<0.000189	72.8	22-135			
gamma-BHC (Lindane)	0.0122	0.000755	"	0.0189	<0.000189	64.5	20-134			
Methoxychlor	0.146	0.00755	"	0.189	<0.00189	77.2	18-147			
Endosulfan II	0.0333	0.00151	"	0.0472	<0.000377	70.7	17-126			
Heptachlor epoxide	0.0129	0.000755	"	0.0189	<0.000189	68.3	20-131			

Origins Laboratory, Inc.



The results in this report apply to the samples analyzed in accordance with the chain of custody document. This analytical report must be reproduced in its entirety.

Eagle Environmental Consulting, Inc.
4101 Inca Street
Denver CO 80211

Dan Coloccia
Project Number: [none]
Project: Wandell E Unit #1

Pesticides by 8081B/3541 - Quality Control
GEL Laboratories, LLC

Analyte	Result	Reporting Limit	Units	Spike Level	Source Result	%REC	%REC Limits	RPD	RPD Limit	Notes
---------	--------	-----------------	-------	-------------	---------------	------	-------------	-----	-----------	-------

Batch 1456428 - SW846 3541

MS (1203261125 S)		Source: X502068-01			Prepared: 02/10/2015 Analyzed: 02/10/2015					
Heptachlor	0.0129	0.000755	mg/kg dry	0.0189	<0.000189	68.4	19-137			
Endrin aldehyde	0.0272	0.00151	"	0.0472	<0.000377	57.6	18-124			
Endosulfan sulfate	0.0335	0.00151	"	0.0472	<0.000377	70.9	20-134			
Chlordane	ND	0.00943	"		<0.00189		50-150			U
Dieldrin	0.0362	0.00151	"	0.0472	<0.000377	76.8	19-131			
Endosulfan I	0.0112	0.000755	"	0.0189	<0.000189	59.5	15-121			
Toxaphene	ND	0.0189	"		<0.00628		50-150			U
Endrin	0.0412	0.00151	"	0.0472	<0.000377	87.3	24-154			
Surrogate: 4cmx	0.0199		"	0.0377	0.0236	52.7	27-124			
Surrogate: Decachlorobiphenyl	0.0249		"	0.0377	0.0268	66	31-131			

MSD (1203261126 SD)		Source: X502068-01			Prepared: 02/10/2015 Analyzed: 02/10/2015					
Methoxychlor	0.149	0.00754	mg/kg dry	0.188	<0.00188	78.9	18-147	2.04	30	
Heptachlor epoxide	0.0137	0.000754	"	0.0188	<0.000188	72.7	20-131	6.21	30	
Heptachlor	0.0144	0.000754	"	0.0188	<0.000188	76.4	19-137	10.9	30	
gamma-BHC (Lindane)	0.0136	0.000754	"	0.0188	<0.000188	72	20-134	10.9	30	
Endrin aldehyde	0.0301	0.00151	"	0.0471	<0.000377	63.8	18-124	10.2	30	
Endrin	0.0418	0.00151	"	0.0471	<0.000377	88.8	24-154	1.62	30	
Endosulfan sulfate	0.0346	0.00151	"	0.0471	<0.000377	73.4	20-134	3.28	30	
Toxaphene	ND	0.0188	"		<0.00627		50-150	0.00	30	U
Endosulfan I	0.0116	0.000754	"	0.0188	<0.000188	61.6	15-121	3.24	30	
Dieldrin	0.0372	0.00151	"	0.0471	<0.000377	79	19-131	2.71	30	
beta-BHC	0.0142	0.000754	"	0.0188	<0.000188	75.5	22-135	3.51	30	
alpha-BHC	0.0127	0.000754	"	0.0188	<0.000188	67.5	21-133	23.4	30	
Aldrin	0.0139	0.000754	"	0.0188	<0.000188	74	21-129	8.52	30	
4,4'-DDT	0.0337	0.00151	"	0.0471	<0.000377	71.6	25-141	4.18	30	
4,4'-DDE	0.0395	0.00151	"	0.0471	<0.000377	83.9	23-133	1.15	30	

Origins Laboratory, Inc.



The results in this report apply to the samples analyzed in accordance with the chain of custody document. This analytical report must be reproduced in its entirety.

Eagle Environmental Consulting, Inc.
4101 Inca Street
Denver CO 80211

Dan Coloccia
Project Number: [none]
Project: Wandell E Unit #1

Pesticides by 8081B/3541 - Quality Control
GEL Laboratories, LLC

Analyte	Result	Reporting Limit	Units	Spike Level	Source Result	%REC	%REC Limits	RPD	RPD Limit	Notes
---------	--------	-----------------	-------	-------------	---------------	------	-------------	-----	-----------	-------

Batch 1456428 - SW846 3541

MSD (1203261126 SD)		Source: X502068-01			Prepared: 02/10/2015 Analyzed: 02/10/2015					
4,4'-DDD	0.0383	0.00151	mg/kg dry	0.0471	<0.000377	81.3	23-142	2.19	30	
Endosulfan II	0.0338	0.00151	"	0.0471	<0.000377	71.7	17-126	1.38	30	
Chlordane	ND	0.00942	"		<0.00188		50-150	0.00	30	U
Surrogate: Decachlorobiphenyl	0.0256		"	0.0377	0.0268	67.8	31-131			
Surrogate: 4cmx	0.0264		"	0.0377	0.0236	70.2	27-124			

Origins Laboratory, Inc.



The results in this report apply to the samples analyzed in accordance with the chain of custody document. This analytical report must be reproduced in its entirety.

Jen Pellegrini For Noelle Doyle Mathis, President

Eagle Environmental Consulting, Inc.
4101 Inca Street
Denver CO 80211

Dan Coloccia
Project Number: [none]
Project: Wandell E Unit #1

Solvent Scan by SW846 8015C - Quality Control
GEL Laboratories, LLC

Analyte	Result	Reporting Limit	Units	Spike Level	Source Result	%REC	%REC Limits	RPD	RPD Limit	Notes
Batch 1457752 - SW846 8015C										
BLANK (1203264752-BLK)					Prepared: 02/13/2015 Analyzed: 02/13/2015					
Hexane	ND	10000	ug/kg				-			U
LCS (1203264753-BKS)					Prepared: 02/13/2015 Analyzed: 02/13/2015					
Hexane	105000	10000	ug/kg	100000		105	56-165			
DUP (1203264754 D)					Source: X502068-01 Prepared: 02/13/2015 Analyzed: 02/13/2015					
Hexane	ND	49600	ug/kg dry		<14900		0-30	0.00	30	U

Origins Laboratory, Inc.



The results in this report apply to the samples analyzed in accordance with the chain of custody document. This analytical report must be reproduced in its entirety.

Eagle Environmental Consulting, Inc.
4101 Inca Street
Denver CO 80211

Dan Coloccia
Project Number: [none]
Project: Wandell E Unit #1

SVOC by 8270D/3541 - Quality Control
GEL Laboratories, LLC

Analyte	Result	Reporting Limit	Units	Spike Level	Source Result	%REC	%REC Limits	RPD	RPD Limit	Notes
---------	--------	-----------------	-------	-------------	---------------	------	-------------	-----	-----------	-------

Batch 1456217 - SW846 3541

BLANK (1203260463-BLK)

Prepared: 02/09/2015 Analyzed: 02/10/2015

2-Chlorophenol	ND	0.333	mg/kg				-			U
2-Chloronaphthalene	ND	0.0333	"				-			U
2,4-Dinitrophenol	ND	0.666	"				-			U
2,4-Dimethylphenol	ND	0.333	"				-			U
2,4-Dichlorophenol	ND	0.333	"				-			U
2,4,6-Trichlorophenol	ND	0.333	"				-			U
2,4,5-Trichlorophenol	ND	0.333	"				-			U
1-Methylnaphthalene	ND	0.0333	"				-			U
1,4-Dioxane	ND	0.333	"				-			U
1,2,4-Trichlorobenzene	ND	0.333	"				-			U
1,2-Dichlorobenzene	ND	0.333	"				-			U
Pyrene	ND	0.0333	"				-			U
N-Nitrosodipropylamine	ND	0.333	"				-			U
3,3'-Dichlorobenzidine	ND	0.333	"				-			U
Naphthalene	ND	0.0333	"				-			U
Pyridine	ND	0.333	"				-			U
o-Cresol	ND	0.333	"				-			U
Pentachlorophenol	ND	0.333	"				-			U
Phenol	ND	0.333	"				-			U
Phorate	ND	0.333	"				-			U
1,4-Dinitrobenzene	ND	0.333	"				-			U
Benzo(b)fluoranthene	ND	0.0333	"				-			U
Di-n-butylphthalate	ND	0.333	"				-			U
Butylbenzylphthalate	ND	0.333	"				-			U
Nitrobenzene	ND	0.333	"				-			U
bis(2-Chloro-1-methylethyl)ether	ND	0.333	"				-			U

Origins Laboratory, Inc.



The results in this report apply to the samples analyzed in accordance with the chain of custody document. This analytical report must be reproduced in its entirety.

Eagle Environmental Consulting, Inc.
4101 Inca Street
Denver CO 80211

Dan Coloccia
Project Number: [none]
Project: Wandell E Unit #1

SVOC by 8270D/3541 - Quality Control
GEL Laboratories, LLC

Analyte	Result	Reporting Limit	Units	Spike Level	Source Result	%REC	%REC Limits	RPD	RPD Limit	Notes
---------	--------	-----------------	-------	-------------	---------------	------	-------------	-----	-----------	-------

Batch 1456217 - SW846 3541

BLANK (1203260463-BLK)

Prepared: 02/09/2015 Analyzed: 02/10/2015

Benzyl alcohol	ND	0.333	mg/kg				-			U
Dibenzo(a,h)anthracene	ND	0.0333	"				-			U
Benzo(k)fluoranthene	ND	0.0333	"				-			U
Chrysene	ND	0.0333	"				-			U
Benzo(a)pyrene	ND	0.0333	"				-			U
Benzo(a)anthracene	ND	0.0333	"				-			U
Anthracene	ND	0.0333	"				-			U
Acetophenone	ND	0.333	"				-			U
Acenaphthene	ND	0.0333	"				-			U
2-Methylnaphthalene	ND	0.0333	"				-			U
Benzoic acid	ND	0.666	"				-			U
Hexachlorocyclopentadiene	ND	0.333	"				-			U
N-Methyl-N-nitrosomethylamine	ND	0.333	"				-			U
m,p-Cresols	ND	0.333	"				-			U
Isophorone	ND	0.333	"				-			U
bis(2-Ethylhexyl)phthalate	ND	0.333	"				-			U
Hexachloroethane	ND	0.333	"				-			U
Dibenzofuran	ND	0.333	"				-			U
Hexachlorobutadiene	ND	0.333	"				-			U
Hexachlorobenzene	ND	0.333	"				-			U
4-Nitrophenol	ND	0.333	"				-			U
Fluorene	ND	0.0333	"				-			U
Fluoranthene	ND	0.0333	"				-			U
Diphenylamine	ND	0.333	"				-			U
Diethylphthalate	ND	0.333	"				-			U
Indeno(1,2,3-cd)pyrene	ND	0.0333	"				-			U

Origins Laboratory, Inc.



The results in this report apply to the samples analyzed in accordance with the chain of custody document. This analytical report must be reproduced in its entirety.

Eagle Environmental Consulting, Inc.
4101 Inca Street
Denver CO 80211

Dan Coloccia
Project Number: [none]
Project: Wandell E Unit #1

SVOC by 8270D/3541 - Quality Control GEL Laboratories, LLC

Analyte	Result	Reporting Limit	Units	Spike Level	Source Result	%REC	%REC Limits	RPD	RPD Limit	Notes
---------	--------	-----------------	-------	-------------	---------------	------	-------------	-----	-----------	-------

Batch 1456217 - SW846 3541

BLANK (1203260463-BLK)

Prepared: 02/09/2015 Analyzed: 02/10/2015

Surrogate: 2-Fluorophenol	1.84		mg/kg	3.33		55.3	23-107
Surrogate: 2-Fluorobiphenyl	1.04		"	1.67		62.4	25-100
Surrogate: 2,4,6-Tribromophenol	2.46		"	3.33		73.9	20-122
Surrogate: Nitrobenzene-d5	1.01		"	1.67		60.7	21-103
Surrogate: p-Terphenyl-d14	1.19		"	1.67		71.7	31-124
Surrogate: Phenol-d5	1.84		"	3.33		55.1	25-108

LCS (1203260464-BKS)

Prepared: 02/09/2015 Analyzed: 02/10/2015

Pyrene	1.13	0.0333	mg/kg	1.67		67.7	33-99
Phenol	0.765	0.333	"	1.67		45.9	38-98
Pentachlorophenol	1.20	0.333	"	1.67		72.1	31-93
4-Nitrophenol	0.963	0.333	"	1.67		57.8	23-114
2-Chlorophenol	0.805	0.333	"	1.67		48.4	38-100
1,2,4-Trichlorobenzene	0.828	0.333	"	1.67		49.7	37-98
Acenaphthene	0.966	0.0333	"	1.67		58	36-105
N-Nitrosodipropylamine	0.773	0.333	"	1.67		46.4	34-106
Surrogate: 2-Fluorophenol	1.52		"	3.33		45.8	23-107
Surrogate: Phenol-d5	1.58		"	3.33		47.3	25-108
Surrogate: p-Terphenyl-d14	1.23		"	1.67		73.6	31-124
Surrogate: Nitrobenzene-d5	0.788		"	1.67		47.3	21-103
Surrogate: 2-Fluorobiphenyl	0.941		"	1.67		56.5	25-100
Surrogate: 2,4,6-Tribromophenol	2.63		"	3.33		79.1	20-122

MS (1203260465 S)

Source: 366701001

Prepared: 02/09/2015 Analyzed: 02/10/2015

Pyrene	1.20	0.0363	mg/kg dry	1.81	<0.0109	66.4	25-119
Pentachlorophenol	1.29	0.363	"	1.81	<0.109	71.3	22-108
N-Nitrosodipropylamine	0.995	0.363	"	1.81	<0.109	54.9	23-117
4-Nitrophenol	0.958	0.363	"	1.81	<0.109	52.8	12-128

Origins Laboratory, Inc.



The results in this report apply to the samples analyzed in accordance with the chain of custody document. This analytical report must be reproduced in its entirety.

Eagle Environmental Consulting, Inc.
4101 Inca Street
Denver CO 80211

Dan Coloccia
Project Number: [none]
Project: Wandell E Unit #1

SVOC by 8270D/3541 - Quality Control GEL Laboratories, LLC

Analyte	Result	Reporting Limit	Units	Spike Level	Source Result	%REC	%REC Limits	RPD	RPD Limit	Notes
---------	--------	-----------------	-------	-------------	---------------	------	-------------	-----	-----------	-------

Batch 1456217 - SW846 3541

MS (1203260465 S)		Source: 366701001			Prepared: 02/09/2015 Analyzed: 02/10/2015					
2-Chlorophenol	1.06	0.363	mg/kg dry	1.81	<0.109	58.3	28-108			
1,2,4-Trichlorobenzene	1.01	0.363	"	1.81	<0.109	55.8	25-102			
Acenaphthene	1.10	0.0363	"	1.81	<0.0109	60.5	28-102			
Phenol	0.973	0.363	"	1.81	<0.109	53.7	28-108			
Surrogate: p-Terphenyl-d14	1.26		"	1.81	1.06	69.4	31-124			
Surrogate: Phenol-d5	1.98		"	3.63	2.19	54.5	25-108			
Surrogate: Nitrobenzene-d5	0.973		"	1.81	1.05	53.6	21-103			
Surrogate: 2-Fluorophenol	1.96		"	3.63	2.15	54.1	23-107			
Surrogate: 2-Fluorobiphenyl	1.05		"	1.81	1.00	57.8	25-100			
Surrogate: 2,4,6-Tribromophenol	2.95		"	3.63	2.80	81.3	20-122			
MSD (1203260466 SD)		Source: 366701001			Prepared: 02/09/2015 Analyzed: 02/10/2015					
Pyrene	0.724	0.0363	mg/kg dry	1.81	<0.0109	39.9	25-119	49.8	30	
Pentachlorophenol	0.832	0.363	"	1.81	<0.109	45.9	22-108	43.4	30	
N-Nitrosodipropylamine	0.993	0.363	"	1.81	<0.109	54.8	23-117	0.219	30	
Acenaphthene	0.850	0.0363	"	1.81	<0.0109	46.9	28-102	25.3	30	
4-Nitrophenol	0.686	0.363	"	1.81	<0.109	37.9	12-128	33.0	30	
2-Chlorophenol	1.07	0.363	"	1.81	<0.109	59.3	28-108	1.74	30	
1,2,4-Trichlorobenzene	0.796	0.363	"	1.81	<0.109	43.9	25-102	23.9	30	
Phenol	1.14	0.363	"	1.81	<0.109	62.8	28-108	15.6	30	
Surrogate: 2,4,6-Tribromophenol	2.08		"	3.63	2.80	57.5	20-122			
Surrogate: p-Terphenyl-d14	0.767		"	1.81	1.06	42.3	31-124			
Surrogate: Nitrobenzene-d5	0.828		"	1.81	1.05	45.7	21-103			
Surrogate: 2-Fluorophenol	2.02		"	3.63	2.15	55.8	23-107			
Surrogate: Phenol-d5	1.83		"	3.63	2.19	50.6	25-108			
Surrogate: 2-Fluorobiphenyl	0.784		"	1.81	1.00	43.2	25-100			

Origins Laboratory, Inc.



The results in this report apply to the samples analyzed in accordance with the chain of custody document. This analytical report must be reproduced in its entirety.

Eagle Environmental Consulting, Inc.
4101 Inca Street
Denver CO 80211

Dan Coloccia
Project Number: [none]
Project: Wandell E Unit #1

Volatiles by SW846 8260C - Quality Control

GEL Laboratories, LLC

Analyte	Result	Reporting Limit	Units	Spike Level	Source Result	%REC	%REC Limits	RPD	RPD Limit	Notes
---------	--------	-----------------	-------	-------------	---------------	------	-------------	-----	-----------	-------

Batch 1456783 - SW846 5035

BLANK (1203262088-BLK)

Prepared: 02/11/2015 Analyzed: 02/11/2015

1,1-Dichloroethane	ND	0.002	mg/kg				-			U
1,3-Dichloropropylene	ND	0.002	"				-			U
1,3-Dichloropropane	ND	0.002	"				-			U
1,3-Dichlorobenzene	ND	0.002	"				-			U
1,3,5-Trimethylbenzene	ND	0.002	"				-			U
1,2-Dichloropropane	ND	0.002	"				-			U
1,2-Dichloroethylene (total)	ND	0.004	"				-			U
1,2-Dichloroethane	ND	0.002	"				-			U
1,2-Dichlorobenzene	ND	0.002	"				-			U
1,2-Dibromoethane	ND	0.002	"				-			U
1,2-Dibromo-3-chloropropane	ND	0.002	"				-			U
1,4-Dichlorobenzene	ND	0.002	"				-			U
1,1-Dichloroethylene	ND	0.002	"				-			U
4-Methyl-2-pentanone	ND	0.010	"				-			U
1,1,2-Trichloroethane	ND	0.002	"				-			U
1,1,2,2-Tetrachloroethane	ND	0.002	"				-			U
1,1,1-Trichloroethane	ND	0.002	"				-			U
Trichloroethylene	ND	0.002	"				-			U
Methylene chloride	ND	0.005	"				-			U
Trichlorofluoromethane	ND	0.002	"				-			U
Trichlorotrifluoroethane	ND	0.005	"				-			U
Vinyl acetate	ND	0.005	"				-			U
Vinyl chloride	ND	0.002	"				-			U
Xylenes (total)	ND	0.006	"				-			U
1,2,3-Trichloropropane	ND	0.002	"				-			U
Chloroform	ND	0.002	"				-			U

Origins Laboratory, Inc.



The results in this report apply to the samples analyzed in accordance with the chain of custody document. This analytical report must be reproduced in its entirety.

Eagle Environmental Consulting, Inc.
4101 Inca Street
Denver CO 80211

Dan Coloccia
Project Number: [none]
Project: Wandell E Unit #1

Volatiles by SW846 8260C - Quality Control GEL Laboratories, LLC

Analyte	Result	Reporting Limit	Units	Spike Level	Source Result	%REC	%REC Limits	RPD	RPD Limit	Notes
---------	--------	-----------------	-------	-------------	---------------	------	-------------	-----	-----------	-------

Batch 1456783 - SW846 5035

BLANK (1203262088-BLK)

Prepared: 02/11/2015 Analyzed: 02/11/2015

n-Propylbenzene	ND	0.002	mg/kg				-			U
Styrene	ND	0.002	"				-			U
Tetrachloroethylene	ND	0.002	"				-			U
Toluene	ND	0.002	"				-			U
trans-1,2-Dichloroethylene	ND	0.002	"				-			U
Ethylbenzene	ND	0.002	"				-			U
Ethyl methacrylate	ND	0.010	"				-			U
Ethyl ether	ND	0.002	"				-			U
Ethyl acetate	ND	0.010	"				-			U
Dichlorodifluoromethane	ND	0.002	"				-			U
2-Butanone	ND	0.010	"				-			U
cis-1,2-Dichloroethylene	ND	0.002	"				-			U
2-Hexanone	ND	0.010	"				-			U
Chlorobenzene	ND	0.002	"				-			U
Carbon tetrachloride	ND	0.002	"				-			U
Carbon disulfide	ND	0.010	"				-			U
Bromomethane	ND	0.002	"				-			U
Bromoform	ND	0.002	"				-			U
Bromodichloromethane	ND	0.002	"				-			U
Bromobenzene	ND	0.002	"				-			U
Benzene	ND	0.002	"				-			U
Acetone	ND	0.010	"				-			U
1,1,1,2-Tetrachloroethane	ND	0.002	"				-			U
Dibromochloromethane	ND	0.002	"				-			U
Surrogate: 1,2-Dichloroethane-d4	0.0522		"	0.050		104	70-128			
Surrogate: Toluene-d8	0.0449		"	0.050		89.8	80-120			
Surrogate: Bromofluorobenzene	0.0509		"	0.050		102	63-138			

Origins Laboratory, Inc.



The results in this report apply to the samples analyzed in accordance with the chain of custody document. This analytical report must be reproduced in its entirety.

Eagle Environmental Consulting, Inc.
4101 Inca Street
Denver CO 80211

Dan Coloccia
Project Number: [none]
Project: Wandell E Unit #1

Volatiles by SW846 8260C - Quality Control

GEL Laboratories, LLC

Analyte	Result	Reporting Limit	Units	Spike Level	Source Result	%REC	%REC Limits	RPD	RPD Limit	Notes
Batch 1456783 - SW846 5035										
BLANK (1203262088-BLK)					Prepared: 02/11/2015 Analyzed: 02/11/2015					
LCS (1203262089-BKS)					Prepared: 02/11/2015 Analyzed: 02/11/2015					
1,1-Dichloroethylene	0.0491	0.002	mg/kg	0.050		98.1	70-130			
Trichloroethylene	0.0496	0.002	"	0.050		99.1	70-130			
Benzene	0.0456	0.002	"	0.050		91.2	70-130			
Chlorobenzene	0.0458	0.002	"	0.050		91.6	70-130			
Toluene	0.0439	0.002	"	0.050		87.8	70-130			
Surrogate: 1,2-Dichloroethane-d4	0.0503		"	0.050		101	70-128			
Surrogate: Bromofluorobenzene	0.0495		"	0.050		99	63-138			
Surrogate: Toluene-d8	0.0454		"	0.050		90.8	80-120			
PS (1203262090 S)					Source: X502068-02		Prepared: 02/11/2015 Analyzed: 02/11/2015			
1,1-Dichloroethylene	0.054	0.00221	mg/kg dry	0.050		97.5	70-130			
Benzene	0.0512	0.00221	"	0.050		92.5	70-130			
Toluene	0.0465	0.00221	"	0.050		84	70-130			
Chlorobenzene	0.0484	0.00221	"	0.050		87.4	70-130			
Trichloroethylene	0.053	0.00221	"	0.050		95.8	70-130			
Surrogate: Toluene-d8	0.0513		"	0.050		92.7	80-120			
Surrogate: Bromofluorobenzene	0.056		"	0.050		101	63-138			
Surrogate: 1,2-Dichloroethane-d4	0.0573		"	0.050		104	70-128			
PSD (1203262091 SD)					Source: X502068-02		Prepared: 02/11/2015 Analyzed: 02/11/2015			
Toluene	0.0471	0.00221	mg/kg dry	0.050		85.1	70-130	1.28	20	
Chlorobenzene	0.0491	0.00221	"	0.050		88.7	70-130	1.52	20	
Benzene	0.0506	0.00221	"	0.050		91.3	70-130	1.28	20	
Trichloroethylene	0.0535	0.00221	"	0.050		96.7	70-130	0.873	20	
1,1-Dichloroethylene	0.0545	0.00221	"	0.050		98.4	70-130	0.899	20	

Origins Laboratory, Inc.



The results in this report apply to the samples analyzed in accordance with the chain of custody document. This analytical report must be reproduced in its entirety.

Eagle Environmental Consulting, Inc.
4101 Inca Street
Denver CO 80211

Dan Coloccia
Project Number: [none]
Project: Wandell E Unit #1

Volatiles by SW846 8260C - Quality Control

GEL Laboratories, LLC

Analyte	Result	Reporting Limit	Units	Spike Level	Source Result	%REC	%REC Limits	RPD	RPD Limit	Notes
---------	--------	-----------------	-------	-------------	---------------	------	-------------	-----	-----------	-------

Batch 1456783 - SW846 5035

PSD (1203262091 SD)			Source: X502068-02		Prepared: 02/11/2015 Analyzed: 02/11/2015					
Surrogate: Toluene-d8	0.0511		mg/kg dry	0.050	92.3	80-120				
Surrogate: 1,2-Dichloroethane-d4	0.0565		"	0.050	102	70-128				
Surrogate: Bromofluorobenzene	0.0585		"	0.050	106	63-138				
BLANK (1203262625-BLK)			Prepared: 02/11/2015 Analyzed: 02/11/2015							

n-Propylbenzene	ND	0.002	mg/kg		-					U
Trichlorotrifluoroethane	ND	0.005	"		-					U
Ethylbenzene	ND	0.002	"		-					U
Methylene chloride	ND	0.005	"		-					U
Styrene	ND	0.002	"		-					U
Tetrachloroethylene	ND	0.002	"		-					U
Toluene	ND	0.002	"		-					U
trans-1,2-Dichloroethylene	ND	0.002	"		-					U
Trichlorofluoromethane	ND	0.002	"		-					U
Vinyl acetate	ND	0.005	"		-					U
Vinyl chloride	ND	0.002	"		-					U
Xylenes (total)	ND	0.006	"		-					U
1,1,1-Trichloroethane	ND	0.002	"		-					U
Chlorobenzene	ND	0.002	"		-					U
1,1,2-Trichloroethane	ND	0.002	"		-					U
1,1,1,2-Tetrachloroethane	ND	0.002	"		-					U
Trichloroethylene	ND	0.002	"		-					U
cis-1,2-Dichloroethylene	ND	0.002	"		-					U
Benzene	ND	0.002	"		-					U
1,1-Dichloroethane	ND	0.002	"		-					U
Bromodichloromethane	ND	0.002	"		-					U
Carbon disulfide	ND	0.010	"		-					U

Origins Laboratory, Inc.



The results in this report apply to the samples analyzed in accordance with the chain of custody document. This analytical report must be reproduced in its entirety.

Eagle Environmental Consulting, Inc.
4101 Inca Street
Denver CO 80211

Dan Coloccia
Project Number: [none]
Project: Wandell E Unit #1

Volatiles by SW846 8260C - Quality Control

GEL Laboratories, LLC

Analyte	Result	Reporting Limit	Units	Spike Level	Source Result	%REC	%REC Limits	RPD	RPD Limit	Notes
---------	--------	-----------------	-------	-------------	---------------	------	-------------	-----	-----------	-------

Batch 1456783 - SW846 5035

BLANK (1203262625-BLK)

Prepared: 02/11/2015 Analyzed: 02/11/2015

Bromoform	ND	0.002	mg/kg				-			U
Bromomethane	ND	0.002	"				-			U
Acetone	ND	0.010	"				-			U
Chloroform	ND	0.002	"				-			U
Bromobenzene	ND	0.002	"				-			U
Dibromochloromethane	ND	0.002	"				-			U
Dichlorodifluoromethane	ND	0.002	"				-			U
Ethyl acetate	ND	0.010	"				-			U
Ethyl ether	ND	0.002	"				-			U
Ethyl methacrylate	ND	0.010	"				-			U
1,1,2,2-Tetrachloroethane	ND	0.002	"				-			U
Carbon tetrachloride	ND	0.002	"				-			U
1,1-Dichloroethylene	ND	0.002	"				-			U
1,2-Dichloroethylene (total)	ND	0.004	"				-			U
1,2-Dichloropropane	ND	0.002	"				-			U
1,2-Dichloroethane	ND	0.002	"				-			U
1,2-Dichlorobenzene	ND	0.002	"				-			U
4-Methyl-2-pentanone	ND	0.010	"				-			U
1,2-Dibromoethane	ND	0.002	"				-			U
1,2,3-Trichloropropane	ND	0.002	"				-			U
1,3,5-Trimethylbenzene	ND	0.002	"				-			U
1,3-Dichlorobenzene	ND	0.002	"				-			U
1,3-Dichloropropane	ND	0.002	"				-			U
1,3-Dichloropropylene	ND	0.002	"				-			U
1,4-Dichlorobenzene	ND	0.002	"				-			U
2-Butanone	ND	0.010	"				-			U

Origins Laboratory, Inc.



The results in this report apply to the samples analyzed in accordance with the chain of custody document. This analytical report must be reproduced in its entirety.

Eagle Environmental Consulting, Inc.
4101 Inca Street
Denver CO 80211

Dan Coloccia
Project Number: [none]
Project: Wandell E Unit #1

Volatiles by SW846 8260C - Quality Control GEL Laboratories, LLC

Analyte	Result	Reporting Limit	Units	Spike Level	Source Result	%REC	%REC Limits	RPD	RPD Limit	Notes
Batch 1456783 - SW846 5035										
BLANK (1203262625-BLK)					Prepared: 02/11/2015 Analyzed: 02/11/2015					
2-Hexanone	ND	0.010	mg/kg				-			U
1,2-Dibromo-3-chloropropane	ND	0.002	"				-			U
Surrogate: Toluene-d8	0.0444		"	0.050		88.7	80-120			
Surrogate: Bromofluorobenzene	0.0499		"	0.050		99.8	63-138			
Surrogate: 1,2-Dichloroethane-d4	0.0507		"	0.050		101	70-128			
LCS (1203262626-BKS)					Prepared: 02/11/2015 Analyzed: 02/11/2015					
Chlorobenzene	0.0476	0.002	mg/kg	0.050		95.2	70-130			
Trichloroethylene	0.0517	0.002	"	0.050		103	70-130			
Toluene	0.0457	0.002	"	0.050		91.5	70-130			
Benzene	0.048	0.002	"	0.050		95.9	70-130			
1,1-Dichloroethylene	0.0502	0.002	"	0.050		100	70-130			
Surrogate: Bromofluorobenzene	0.0507		"	0.050		101	63-138			
Surrogate: 1,2-Dichloroethane-d4	0.0521		"	0.050		104	70-128			
Surrogate: Toluene-d8	0.0467		"	0.050		93.5	80-120			

Origins Laboratory, Inc.



The results in this report apply to the samples analyzed in accordance with the chain of custody document. This analytical report must be reproduced in its entirety.

Eagle Environmental Consulting, Inc.

4101 Inca Street

Denver CO 80211

Dan Coloccia

Project Number: [none]

Project: Wandell E Unit #1

Notes and Definitions

- U Result not detected above the detection limit
- P RPD between columns > %40
- N Spiked sample recovery not within control limits
- J Greater than the detection limit but less than the reporting limit
- EP Concentration of the target analyte exceeds the instrument calibration range
- ND Analyte NOT DETECTED at or above the reporting limit
- RPD Relative Percent Difference
- All soil results are reported at a wet weight basis.

Origins Laboratory, Inc.



The results in this report apply to the samples analyzed in accordance with the chain of custody document. This analytical report must be reproduced in its entirety.