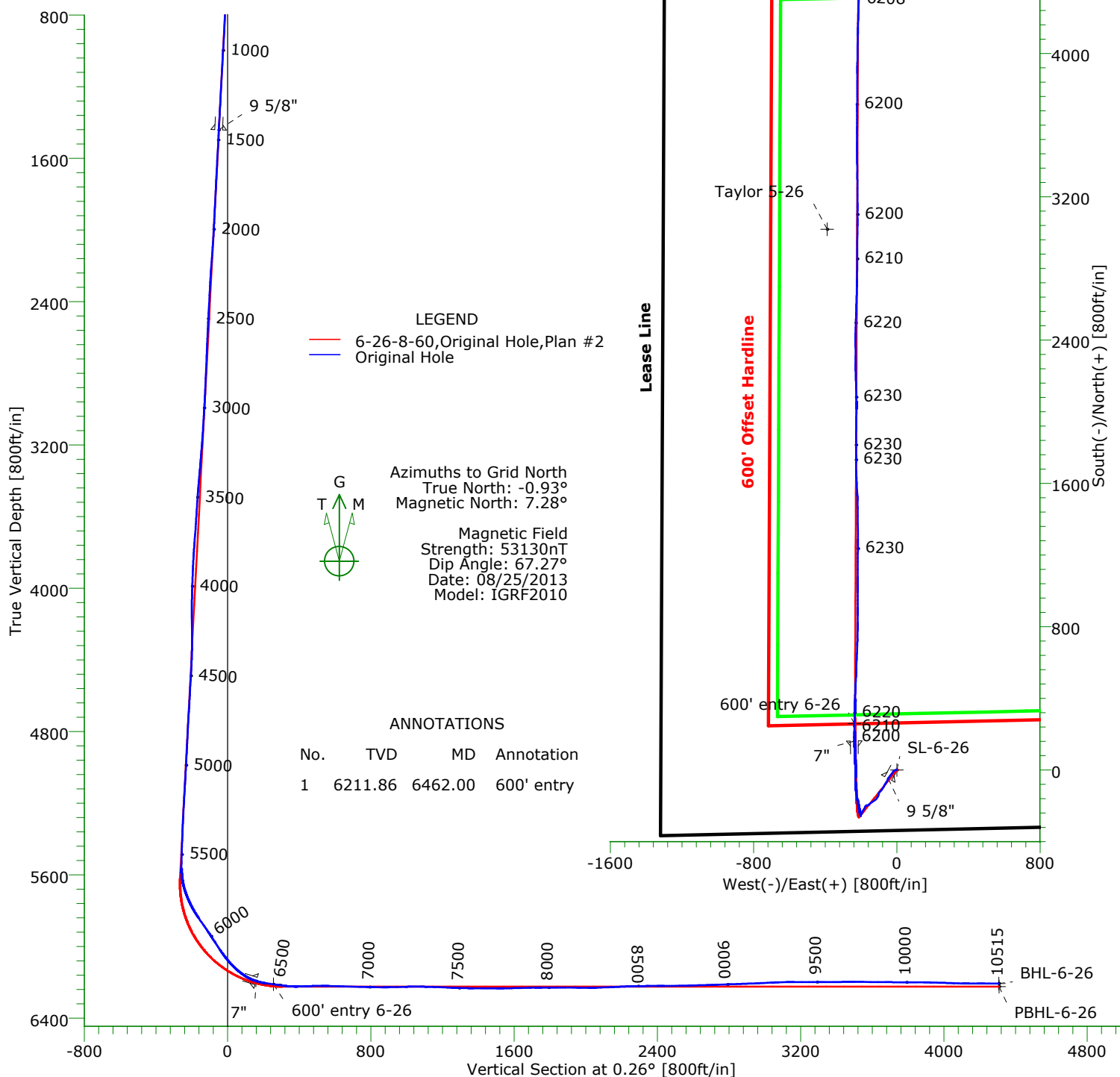


CASING DETAILS

No.	TVD	MD	Name	Size
1	1441.71	1444.00	9 5/8"	9.625
2	6193.95	6363.00	7"	7.000



TARGET DETAILS

Name	TVD	+N/-S	+E/-W	Northing	Easting	Latitude	Longitude	Shape
Taylor 5-26	-100.00	3018.43	-389.62	1477512.72	3398264.56	40°38'07.133N	104°03'53.999W	Point
SL-6-26	0.00	0.00	0.00	1474494.29	3398654.18	40°37'37.248N	104°03'49.580W	Point
BHL-6-26	6207.99	4308.62	-211.48	1478802.91	3398442.70	40°38'19.852N	104°03'51.418W	Point
600' entry 6-26	6211.86	258.35	-236.85	1474752.64	3398417.33	40°37'39.838N	104°03'52.597W	Point
PBHL-6-26	6225.00	4310.00	-216.34	1478804.29	3398437.84	40°38'19.866N	104°03'51.480W	Point

Precision Directional Services, Inc.

Survey Report

Company: CARRIZO OIL & GAS, INC.		Date: 09/13/2013		Time: 12:56:52		Page: 1	
Field: Niobrara CONZ'83		Co-ordinate(NE) Reference: Well: 6-26-8-60, Grid North					
Site: Bailey 2-26-8-60 Pad		Vertical (TVD) Reference: 4874'GL+17'KB 4891.0					
Well: 6-26-8-60		Section (VS) Reference: Well (0.00N,0.00E,0.26Azi)					
Wellpath: Original Hole		Survey Calculation Method: Minimum Curvature				Db: Adapti	

Field: Niobrara CONZ'83			
Map System: US State Plane Coordinate System 1983		Map Zone: Colorado, Northern Zone	
Geo Datum: GRS 1980		Coordinate System: Well Centre	
Sys Datum: Mean Sea Level		Geomagnetic Model: IGRF2010	

Site: Bailey 2-26-8-60 Pad Centered on 5-26-8-60 Weld County, CO			
Site Position:	Northing: 1474497.30 ft	Latitude: 40 37 37.280 N	
From: Map	Easting: 3398639.49 ft	Longitude: 104 3 49.770 W	
Position Uncertainty: 0.00 ft		North Reference: Grid	
Ground Level: 4874.00 ft		Grid Convergence: 0.93 deg	

Well: 6-26-8-60 337'FSL,1319'FWL		Slot Name: 6-26	
Well Position: +N/-S -3.01 ft	Northing: 1474494.29 ft	Latitude: 40 37 37.248 N	
+E/-W 14.69 ft	Easting : 3398654.18 ft	Longitude: 104 3 49.580 W	
Position Uncertainty: 0.00 ft			

Wellpath: Original Hole		Drilled From: Surface	
Current Datum: 4874'GL+17'KB		Tie-on Depth: 0.00 ft	
Magnetic Data: 08/25/2013		Above System Datum: Mean Sea Level	
Field Strength: 53130 nT		Declination: 8.21 deg	
Vertical Section: Depth From (TVD)		Mag Dip Angle: 67.27 deg	
ft	+N/-S ft	+E/-W ft	Direction deg
0.00	0.00	0.00	0.26

Survey Program for Definitive Wellpath			
Date: 09/05/2013		Validated: No	
Actual From To		Version: 1	Toolcode
ft	ft		Tool Name
141.00	10458.00	Survey #1 (141.00-10458.00)	MWD
10515.00	10515.00	Survey #2 (10515.00-10515.00)	Project
			Std MWD Projection

Survey										
MD ft	Incl deg	Azim deg	TVD ft	+N/-S ft	+E/-W ft	VS ft	DLS deg/100ft	Build deg/100ft	Turn deg/100ft	Tool/Comment
0.00	0.00	0.00	0.00	0.00	0.00	0.00	0.00	0.00	0.00	TIE LINE
141.00	0.70	332.50	141.00	0.76	-0.40	0.76	0.50	0.50	0.00	MWD
237.00	0.70	327.60	236.99	1.78	-0.98	1.77	0.06	0.00	-5.10	MWD
331.00	0.80	297.70	330.98	2.57	-1.87	2.56	0.42	0.11	-31.81	MWD
424.00	2.60	243.70	423.94	1.94	-4.34	1.92	2.39	1.94	-58.06	MWD
518.00	3.30	237.00	517.82	-0.48	-8.52	-0.52	0.83	0.74	-7.13	MWD
611.00	4.70	236.50	610.59	-4.04	-13.94	-4.11	1.51	1.51	-0.54	MWD
705.00	3.90	224.00	704.32	-8.47	-19.37	-8.56	1.31	-0.85	-13.30	MWD
799.00	3.80	217.30	798.11	-13.25	-23.48	-13.35	0.49	-0.11	-7.13	MWD
892.00	4.00	216.80	890.90	-18.29	-27.29	-18.42	0.22	0.22	-0.54	MWD
986.00	4.00	216.80	984.67	-23.54	-31.22	-23.69	0.00	0.00	0.00	MWD
1079.00	3.80	218.10	1077.45	-28.57	-35.06	-28.73	0.24	-0.22	1.40	MWD
1173.00	3.80	214.70	1171.25	-33.58	-38.76	-33.75	0.24	0.00	-3.62	MWD
1266.00	3.80	212.10	1264.04	-38.72	-42.15	-38.91	0.19	0.00	-2.80	MWD
1360.00	3.40	209.30	1357.86	-43.79	-45.17	-44.00	0.46	-0.43	-2.98	MWD
1416.00	3.40	208.90	1413.76	-46.70	-46.79	-46.91	0.04	0.00	-0.71	MWD
1534.00	3.30	208.00	1531.56	-52.76	-50.07	-52.98	0.10	-0.08	-0.76	MWD
1619.00	3.30	203.60	1616.41	-57.16	-52.20	-57.40	0.30	0.00	-5.18	MWD
1704.00	3.00	201.70	1701.29	-61.47	-54.00	-61.71	0.37	-0.35	-2.24	MWD
1789.00	3.60	218.20	1786.15	-65.63	-56.47	-65.89	1.31	0.71	19.41	MWD
1875.00	3.60	217.00	1871.98	-69.91	-59.77	-70.18	0.09	0.00	-1.40	MWD
1960.00	3.20	214.70	1956.83	-73.99	-62.72	-74.28	0.50	-0.47	-2.71	MWD

Precision Directional Services, Inc.

Survey Report

Company: CARRIZO OIL & GAS, INC. Field: Niobrara CONZ'83 Site: Bailey 2-26-8-60 Pad Well: 6-26-8-60 Wellpath: Original Hole	Date: 09/13/2013 Time: 12:56:52 Page: 2 Co-ordinate(NE) Reference: Well: 6-26-8-60, Grid North Vertical (TVD) Reference: 4874'GL+17"KB 4891.0 Section (VS) Reference: Well (0.00N,0.00E,0.26Azi) Survey Calculation Method: Minimum Curvature Db: Adapti
--	--

Survey

MD ft	Incl deg	Azim deg	TVD ft	+N/-S ft	+E/-W ft	VS ft	DLS deg/100ft	Build deg/100ft	Turn deg/100ft	Tool/Comment
2045.00	4.40	211.70	2041.64	-78.72	-65.79	-79.01	1.43	1.41	-3.53	MWD
2130.00	4.70	206.50	2126.37	-84.61	-69.06	-84.92	0.60	0.35	-6.12	MWD
2216.00	4.50	201.00	2212.09	-90.91	-71.84	-91.23	0.56	-0.23	-6.40	MWD
2301.00	3.90	214.70	2296.87	-96.40	-74.68	-96.74	1.37	-0.71	16.12	MWD
2386.00	3.70	221.00	2381.68	-100.85	-78.12	-101.20	0.54	-0.24	7.41	MWD
2471.00	3.70	216.50	2466.50	-105.12	-81.55	-105.49	0.34	0.00	-5.29	MWD
2556.00	3.30	215.20	2551.35	-109.32	-84.60	-109.71	0.48	-0.47	-1.53	MWD
2642.00	2.80	212.30	2637.22	-113.12	-87.14	-113.52	0.61	-0.58	-3.37	MWD
2727.00	3.30	223.10	2722.10	-116.66	-89.93	-117.07	0.89	0.59	12.71	MWD
2812.00	3.50	226.80	2806.95	-120.23	-93.49	-120.65	0.35	0.24	4.35	MWD
2898.00	3.20	224.00	2892.81	-123.75	-97.07	-124.19	0.40	-0.35	-3.26	MWD
2983.00	4.00	208.60	2977.64	-128.06	-100.14	-128.51	1.47	0.94	-18.12	MWD
3068.00	3.30	189.90	3062.47	-133.07	-101.98	-133.53	1.61	-0.82	-22.00	MWD
3153.00	3.90	190.10	3147.30	-138.33	-102.90	-138.79	0.71	0.71	0.24	MWD
3239.00	5.10	196.80	3233.04	-144.87	-104.52	-145.34	1.52	1.40	7.79	MWD
3324.00	5.80	214.50	3317.66	-152.02	-108.05	-152.51	2.13	0.82	20.82	MWD
3409.00	6.60	218.40	3402.16	-159.39	-113.51	-159.91	1.06	0.94	4.59	MWD
3494.00	6.20	232.10	3486.64	-166.04	-120.17	-166.58	1.85	-0.47	16.12	MWD
3580.00	6.30	237.00	3572.13	-171.46	-127.79	-172.04	0.63	0.12	5.70	MWD
3665.00	6.80	234.40	3656.57	-176.93	-135.80	-177.55	0.68	0.59	-3.06	MWD
3750.00	7.20	230.90	3740.94	-183.22	-144.02	-183.87	0.69	0.47	-4.12	MWD
3835.00	5.40	235.10	3825.42	-188.87	-151.44	-189.55	2.18	-2.12	4.94	MWD
3921.00	4.20	234.90	3911.12	-193.00	-157.33	-193.71	1.40	-1.40	-0.23	MWD
4006.00	3.30	234.80	3995.93	-196.20	-161.88	-196.93	1.06	-1.06	-0.12	MWD
4091.00	1.80	242.30	4080.85	-198.23	-165.06	-198.97	1.80	-1.76	8.82	MWD
4177.00	1.20	303.10	4166.82	-198.36	-167.01	-199.12	1.86	-0.70	70.70	MWD
4262.00	1.20	281.00	4251.81	-197.71	-168.63	-198.47	0.54	0.00	-26.00	MWD
4347.00	1.90	260.10	4336.77	-197.78	-170.89	-198.55	1.05	0.82	-24.59	MWD
4432.00	3.40	219.50	4421.69	-199.97	-173.88	-200.75	2.72	1.76	-47.76	MWD
4518.00	3.80	207.70	4507.52	-204.46	-176.83	-205.26	0.98	0.47	-13.72	MWD
4603.00	3.30	201.20	4592.36	-209.23	-179.02	-210.04	0.75	-0.59	-7.65	MWD
4688.00	4.30	209.80	4677.17	-214.28	-181.49	-215.10	1.35	1.18	10.12	MWD
4773.00	3.70	213.80	4761.96	-219.32	-184.60	-220.16	0.78	-0.71	4.71	MWD
4858.00	2.90	211.90	4846.82	-223.43	-187.26	-224.28	0.95	-0.94	-2.24	MWD
4943.00	3.70	216.80	4931.68	-227.45	-190.04	-228.31	1.00	0.94	5.76	MWD
5029.00	3.70	211.40	5017.50	-232.04	-193.15	-232.91	0.41	0.00	-6.28	MWD
5114.00	3.30	194.80	5102.34	-236.75	-195.20	-237.63	1.28	-0.47	-19.53	MWD
5199.00	3.60	200.30	5187.19	-241.61	-196.75	-242.50	0.53	0.35	6.47	MWD
5285.00	3.20	204.30	5273.04	-246.33	-198.68	-247.23	0.54	-0.47	4.65	MWD
5370.00	2.40	198.70	5357.94	-250.18	-200.23	-251.09	0.99	-0.94	-6.59	MWD
5455.00	2.00	197.50	5442.87	-253.28	-201.24	-254.19	0.47	-0.47	-1.41	MWD
5534.00	1.80	184.70	5521.83	-255.83	-201.76	-256.75	0.59	-0.25	-16.20	MWD
5577.00	1.00	200.60	5564.82	-256.86	-201.95	-257.77	2.05	-1.86	36.98	MWD
5619.00	5.80	324.60	5606.75	-255.47	-203.31	-256.39	15.27	11.43	295.24	MWD
5662.00	14.00	342.70	5649.08	-248.72	-206.12	-249.65	20.17	19.07	42.09	MWD
5704.00	17.90	350.90	5689.46	-237.49	-208.65	-238.44	10.70	9.29	19.52	MWD
5747.00	22.90	350.60	5729.75	-222.70	-211.06	-223.66	11.63	11.63	-0.70	MWD
5790.00	27.10	349.50	5768.72	-204.81	-214.21	-205.78	9.83	9.77	-2.56	MWD
5832.00	31.80	349.00	5805.28	-184.53	-218.07	-185.52	11.21	11.19	-1.19	MWD
5875.00	35.70	351.60	5841.03	-160.99	-222.07	-161.99	9.67	9.07	6.05	MWD
5918.00	35.30	351.10	5876.03	-136.30	-225.82	-137.32	1.15	-0.93	-1.16	MWD
5960.00	34.10	350.80	5910.56	-112.69	-229.58	-113.73	2.89	-2.86	-0.71	MWD
6003.00	33.30	356.60	5946.35	-89.00	-232.21	-90.05	7.71	-1.86	13.49	MWD

Precision Directional Services, Inc.

Survey Report

Company: CARRIZO OIL & GAS, INC. Field: Niobrara CONZ'83 Site: Bailey 2-26-8-60 Pad Well: 6-26-8-60 Wellpath: Original Hole	Date: 09/13/2013 Time: 12:56:52 Page: 3 Co-ordinate(NE) Reference: Well: 6-26-8-60, Grid North Vertical (TVD) Reference: 4874'GL+17"KB 4891.0 Section (VS) Reference: Well (0.00N,0.00E,0.26Azi) Survey Calculation Method: Minimum Curvature Db: Adapti
--	--

Survey

MD ft	Incl deg	Azim deg	TVD ft	+N/-S ft	+E/-W ft	VS ft	DLS deg/100ft	Build deg/100ft	Turn deg/100ft	Tool/Comment
6046.00	33.80	2.20	5982.19	-65.26	-232.45	-66.31	7.29	1.16	13.02	MWD
6088.00	32.80	2.20	6017.29	-42.22	-231.57	-43.27	2.38	-2.38	0.00	MWD
6131.00	36.20	359.00	6052.73	-17.87	-231.34	-18.92	8.96	7.91	-7.44	MWD
6173.00	41.10	358.70	6085.52	8.34	-231.87	7.29	11.68	11.67	-0.71	MWD
6216.00	45.70	356.90	6116.76	37.86	-233.02	36.80	11.08	10.70	-4.19	MWD
6258.00	51.50	357.80	6144.52	69.31	-234.47	68.25	13.90	13.81	2.14	MWD
6301.00	58.90	357.60	6169.04	104.57	-235.89	103.50	17.21	17.21	-0.47	MWD
6345.00	69.60	358.70	6188.13	144.12	-237.15	143.04	24.42	24.32	2.50	MWD
6420.00	82.30	0.80	6206.30	216.72	-237.43	215.64	17.15	16.93	2.80	MWD
6462.00	82.49	0.80	6211.86	258.35	-236.85	257.27	0.45	0.45	0.00	600' entry
6464.00	82.50	0.80	6212.12	260.33	-236.82	259.26	0.45	0.45	0.00	MWD
6495.00	82.20	1.10	6216.25	291.05	-236.31	289.98	1.36	-0.97	0.97	MWD
6527.00	83.00	1.30	6220.37	322.78	-235.65	321.71	2.58	2.50	0.62	MWD
6558.00	86.50	1.80	6223.21	353.63	-234.81	352.56	11.40	11.29	1.61	MWD
6600.00	91.60	1.70	6223.90	395.59	-233.53	394.53	12.15	12.14	-0.24	MWD
6643.00	92.40	2.20	6222.40	438.54	-232.07	437.48	2.19	1.86	1.16	MWD
6686.00	90.80	2.50	6221.20	481.49	-230.30	480.44	3.79	-3.72	0.70	MWD
6728.00	90.90	3.10	6220.58	523.43	-228.25	522.39	1.45	0.24	1.43	MWD
6771.00	88.40	2.00	6220.84	566.39	-226.34	565.35	6.35	-5.81	-2.56	MWD
6813.00	88.20	2.00	6222.09	608.34	-224.87	607.31	0.48	-0.48	0.00	MWD
6856.00	88.50	2.40	6223.33	651.29	-223.22	650.27	1.16	0.70	0.93	MWD
6899.00	88.50	2.40	6224.45	694.24	-221.42	693.23	0.00	0.00	0.00	MWD
6941.00	88.50	1.30	6225.55	736.20	-220.07	735.20	2.62	0.00	-2.62	MWD
6984.00	88.20	1.00	6226.79	779.18	-219.21	778.17	0.99	-0.70	-0.70	MWD
7027.00	89.40	0.30	6227.69	822.16	-218.72	821.16	3.23	2.79	-1.63	MWD
7069.00	89.30	0.30	6228.17	864.16	-218.50	863.16	0.24	-0.24	0.00	MWD
7112.00	91.50	359.70	6227.87	907.15	-218.50	906.15	5.30	5.12	-1.40	MWD
7154.00	91.50	359.90	6226.77	949.14	-218.64	948.14	0.48	0.00	0.48	MWD
7197.00	91.50	0.10	6225.64	992.13	-218.64	991.12	0.46	0.00	0.47	MWD
7240.00	90.00	359.60	6225.08	1035.12	-218.76	1034.12	3.68	-3.49	-1.16	MWD
7282.00	89.90	0.30	6225.11	1077.12	-218.79	1076.12	1.68	-0.24	1.67	MWD
7325.00	88.40	0.30	6225.75	1120.11	-218.57	1119.11	3.49	-3.49	0.00	MWD
7367.00	87.90	0.30	6227.11	1162.09	-218.35	1161.09	1.19	-1.19	0.00	MWD
7410.00	87.80	0.40	6228.72	1205.06	-218.09	1204.06	0.33	-0.23	0.23	MWD
7453.00	87.40	0.80	6230.52	1248.02	-217.64	1247.02	1.31	-0.93	0.93	MWD
7495.00	88.60	359.60	6231.99	1289.99	-217.49	1288.99	4.04	2.86	-2.86	MWD
7538.00	88.50	359.40	6233.08	1332.98	-217.87	1331.97	0.52	-0.23	-0.47	MWD
7580.00	90.10	359.40	6233.59	1374.97	-218.31	1373.97	3.81	3.81	0.00	MWD
7623.00	90.00	359.40	6233.55	1417.97	-218.76	1416.96	0.23	-0.23	0.00	MWD
7666.00	89.40	359.40	6233.78	1460.96	-219.21	1459.95	1.40	-1.40	0.00	MWD
7708.00	89.30	358.90	6234.25	1502.96	-219.83	1501.94	1.21	-0.24	-1.19	MWD
7751.00	90.90	357.10	6234.18	1545.93	-221.33	1544.91	5.60	3.72	-4.19	MWD
7794.00	91.20	357.10	6233.39	1588.87	-223.50	1587.83	0.70	0.70	0.00	MWD
7836.00	91.40	356.70	6232.44	1630.79	-225.78	1629.75	1.06	0.48	-0.95	MWD
7879.00	91.40	358.90	6231.39	1673.75	-227.43	1672.70	5.11	0.00	5.12	MWD
7922.00	91.80	358.90	6230.19	1716.72	-228.25	1715.67	0.93	0.93	0.00	MWD
7964.00	89.60	0.40	6229.67	1758.71	-228.51	1757.66	6.34	-5.24	3.57	MWD
8007.00	89.70	0.10	6229.94	1801.71	-228.32	1800.66	0.74	0.23	-0.70	MWD
8050.00	89.80	0.60	6230.12	1844.71	-228.06	1843.66	1.19	0.23	1.16	MWD
8092.00	89.70	0.80	6230.31	1886.71	-227.54	1885.66	0.53	-0.24	0.48	MWD
8135.00	89.70	1.10	6230.53	1929.70	-226.83	1928.65	0.70	0.00	0.70	MWD
8177.00	89.30	0.80	6230.90	1971.69	-226.13	1970.65	1.19	-0.95	-0.71	MWD
8220.00	89.30	1.00	6231.42	2014.68	-225.46	2013.64	0.47	0.00	0.47	MWD
8263.00	92.10	358.30	6230.90	2057.67	-225.72	2056.63	9.05	6.51	-6.28	MWD

Precision Directional Services, Inc.

Survey Report

Company: CARRIZO OIL & GAS, INC. Field: Niobrara CONZ'83 Site: Bailey 2-26-8-60 Pad Well: 6-26-8-60 Wellpath: Original Hole	Date: 09/13/2013 Time: 12:56:52 Page: 4 Co-ordinate(NE) Reference: Well: 6-26-8-60, Grid North Vertical (TVD) Reference: 4874'GL+17'KB 4891.0 Section (VS) Reference: Well (0.00N,0.00E,0.26Azi) Survey Calculation Method: Minimum Curvature Db: Adapti
--	--

Survey

MD ft	Incl deg	Azim deg	TVD ft	+N/-S ft	+E/-W ft	VS ft	DLS deg/100ft	Build deg/100ft	Turn deg/100ft	Tool/Comment
8305.00	92.20	358.50	6229.32	2099.63	-226.89	2098.57	0.53	0.24	0.48	MWD
8348.00	92.30	358.70	6227.63	2142.58	-227.94	2141.52	0.52	0.23	0.47	MWD
8391.00	92.90	358.50	6225.68	2185.52	-228.99	2184.46	1.47	1.40	-0.47	MWD
8433.00	91.90	358.70	6223.92	2227.47	-230.02	2226.41	2.43	-2.38	0.48	MWD
8476.00	91.30	359.90	6222.72	2270.45	-230.54	2269.38	3.12	-1.40	2.79	MWD
8518.00	91.40	359.40	6221.73	2312.44	-230.80	2311.37	1.21	0.24	-1.19	MWD
8561.00	89.90	359.40	6221.25	2355.43	-231.25	2354.36	3.49	-3.49	0.00	MWD
8604.00	90.00	359.70	6221.28	2398.43	-231.59	2397.36	0.74	0.23	0.70	MWD
8646.00	91.00	1.70	6220.92	2440.42	-231.07	2439.35	5.32	2.38	4.76	MWD
8689.00	90.90	1.50	6220.20	2483.40	-229.87	2482.33	0.52	-0.23	-0.47	MWD
8732.00	90.90	1.80	6219.53	2526.38	-228.64	2525.31	0.70	0.00	0.70	MWD
8774.00	91.10	2.00	6218.80	2568.35	-227.24	2567.29	0.67	0.48	0.48	MWD
8817.00	91.80	1.80	6217.71	2611.31	-225.82	2610.26	1.69	1.63	-0.47	MWD
8859.00	91.40	1.70	6216.54	2653.28	-224.54	2652.23	0.98	-0.95	-0.24	MWD
8902.00	91.20	1.30	6215.56	2696.25	-223.41	2695.21	1.04	-0.47	-0.93	MWD
8945.00	92.10	0.80	6214.32	2739.22	-222.62	2738.19	2.39	2.09	-1.16	MWD
8987.00	92.10	0.80	6212.78	2781.19	-222.04	2780.16	0.00	0.00	0.00	MWD
9030.00	92.30	0.30	6211.13	2824.16	-221.62	2823.12	1.25	0.47	-1.16	MWD
9073.00	92.20	0.60	6209.44	2867.12	-221.29	2866.09	0.73	-0.23	0.70	MWD
9115.00	92.10	0.10	6207.87	2909.09	-221.03	2908.06	1.21	-0.24	-1.19	MWD
9158.00	92.30	0.30	6206.22	2952.06	-220.88	2951.03	0.66	0.47	0.47	MWD
9201.00	92.80	0.30	6204.30	2995.02	-220.66	2993.99	1.16	1.16	0.00	MWD
9243.00	93.00	0.30	6202.18	3036.96	-220.44	3035.93	0.48	0.48	0.00	MWD
9286.00	91.40	0.40	6200.53	3079.93	-220.17	3078.90	3.73	-3.72	0.23	MWD
9328.00	91.40	0.40	6199.50	3121.92	-219.88	3120.89	0.00	0.00	0.00	MWD
9371.00	89.90	359.70	6199.02	3164.91	-219.84	3163.88	3.85	-3.49	-1.63	MWD
9414.00	90.00	359.70	6199.05	3207.91	-220.07	3206.88	0.23	0.23	0.00	MWD
9456.00	90.00	359.60	6199.05	3249.91	-220.32	3248.88	0.24	0.00	-0.24	MWD
9499.00	89.80	359.60	6199.13	3292.91	-220.63	3291.87	0.47	-0.47	0.00	MWD
9542.00	90.00	359.00	6199.20	3335.91	-221.15	3334.87	1.47	0.47	-1.40	MWD
9584.00	90.30	359.00	6199.09	3377.90	-221.88	3376.86	0.71	0.71	0.00	MWD
9627.00	90.60	359.40	6198.76	3420.89	-222.48	3419.85	1.16	0.70	0.93	MWD
9669.00	90.40	359.90	6198.39	3462.89	-222.74	3461.84	1.28	-0.48	1.19	MWD
9712.00	89.80	0.40	6198.31	3505.89	-222.63	3504.84	1.82	-1.40	1.16	MWD
9754.00	89.50	0.60	6198.57	3547.89	-222.26	3546.84	0.86	-0.71	0.48	MWD
9797.00	89.50	359.90	6198.95	3590.88	-222.07	3589.84	1.63	0.00	-1.63	MWD
9840.00	89.50	0.10	6199.32	3633.88	-222.07	3632.84	0.47	0.00	0.47	MWD
9882.00	89.50	359.90	6199.69	3675.88	-222.07	3674.84	0.48	0.00	-0.48	MWD
9925.00	89.60	0.30	6200.02	3718.88	-222.00	3717.83	0.96	0.23	0.93	MWD
9967.00	89.70	0.30	6200.28	3760.88	-221.78	3759.83	0.24	0.24	0.00	MWD
10010.00	89.90	0.40	6200.43	3803.88	-221.52	3802.83	0.52	0.47	0.23	MWD
10053.00	89.70	0.10	6200.58	3846.88	-221.33	3845.83	0.84	-0.47	-0.70	MWD
10095.00	89.60	0.10	6200.84	3888.88	-221.26	3887.83	0.24	-0.24	0.00	MWD
10138.00	88.50	0.80	6201.55	3931.87	-220.92	3930.82	3.03	-2.56	1.63	MWD
10181.00	88.30	0.60	6202.75	3974.85	-220.39	3973.81	0.66	-0.47	-0.47	MWD
10223.00	87.80	0.80	6204.18	4016.82	-219.88	4015.78	1.28	-1.19	0.48	MWD
10266.00	88.20	1.30	6205.68	4059.79	-219.09	4058.75	1.49	0.93	1.16	MWD
10309.00	88.00	1.30	6207.11	4102.75	-218.12	4101.72	0.47	-0.47	0.00	MWD
10351.00	90.30	1.10	6207.73	4144.74	-217.24	4143.71	5.50	5.48	-0.48	MWD
10394.00	90.20	1.00	6207.54	4187.73	-216.45	4186.70	0.33	-0.23	-0.23	MWD
10436.00	89.70	2.50	6207.58	4229.71	-215.17	4228.69	3.76	-1.19	3.57	MWD
10458.00	89.70	2.70	6207.69	4251.68	-214.17	4250.67	0.91	0.00	0.91	MWD
10515.00	89.70	2.70	6207.99	4308.62	-211.48	4307.62	0.00	0.00	0.00	Project

Precision Directional Services, Inc.

Survey Report

Company: CARRIZO OIL & GAS, INC.

Field: Niobrara CONZ'83

Site: Bailey 2-26-8-60 Pad

Well: 6-26-8-60

Wellpath: Original Hole

Date: 09/13/2013

Time: 12:56:52

Page: 5

Co-ordinate(NE) Reference: Well: 6-26-8-60, Grid North

Vertical (TVD) Reference: 4874'GL+17'KB 4891.0

Section (VS) Reference: Well (0.00N,0.00E,0.26Azi)

Survey Calculation Method: Minimum Curvature **Db:** Adapti

Annotation

MD ft	TVD ft	
6462.00	6211.86	600' entry