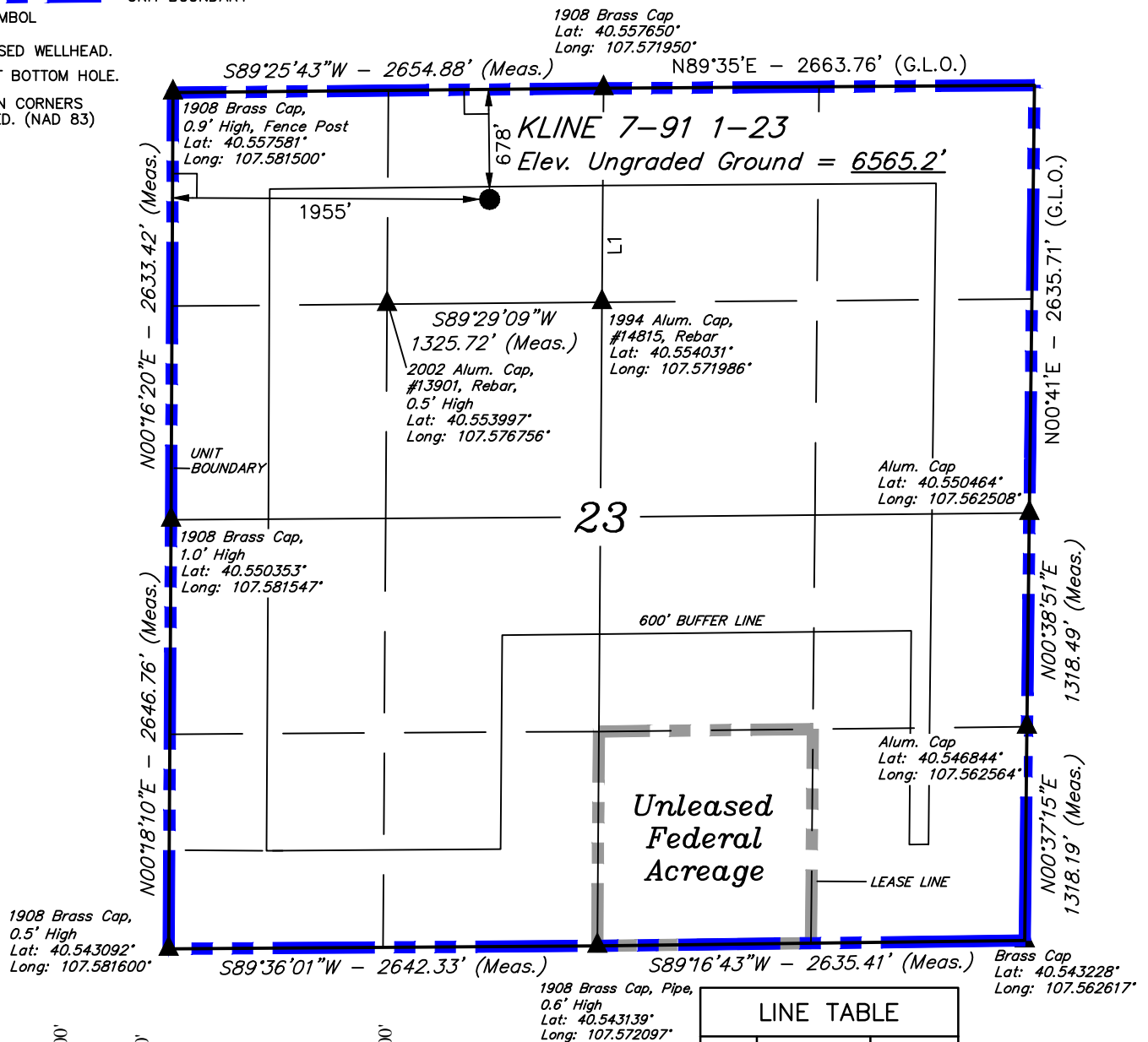


T7N, R91W, 6th P.M.

| = 90° SYMBOL

1908 Brass Cap
Lat: 40.557650°
Long: 107.571950°



LINE TABLE		
LINE	DIRECTION	LENGTH
L1	N00°25'12"E	1319.48'

NAD 83 (TARGET BOTTOM HOLE)	NAD 83 (SURFACE LOCATION)
LATITUDE = 40°32'41.10" (40.544750)	LATITUDE = 40°33'20.78" (40.555772)
LONGITUDE = 107°34'44.65" (107.579069)	LONGITUDE = 107°34'28.12" (107.574478)
NAD 27 (TARGET BOTTOM HOLE)	NAD 27 (SURFACE LOCATION)
LATITUDE = 40°32'41.21" (40.544781)	LATITUDE = 40°33'20.88" (40.555800)
LONGITUDE = 107°34'42.41" (107.578447)	LONGITUDE = 107°34'25.88" (107.573856)
STATE PLANE NAD 83 (CO. NORTH)	STATE PLANE NAD 83 (CO. NORTH)
N: 1448066.91 E: 2422246.80	N: 1452050.95 E: 2423616.38
STATE PLANE NAD 27 (CO. NORTH)	STATE PLANE NAD 27 (CO. NORTH)
N: 448065.79 E: 1422404.48	N: 452049.80 E: 1423774.05

CERTIFICATE

THIS IS TO CERTIFY THAT THE ABOVE PLAN WAS PREPARED FROM FIELD NOTES OF ACTUAL SURVEYS MADE BY ME OR UNDER MY SUPERVISION AND THAT THE SAME ARE TRUE AND CORRECT TO THE BEST OF MY KNOWLEDGE AND BELIEF.

REGISTERED LAND SURVEYOR
REGISTRATION NO. 38130
STATE OF COLORADO

BASIS OF BEARINGS

BASIS OF BEARINGS IS A G.P.S. OBSERVATION

SPOT ELEVATION LOCATED AT THE SOUTHWEST CORNER OF SECTION 15, T7N, R91W, 6th P.M. TAKEN FROM THE CRAIG QUADRANGLE, COLORADO, MOFFAT COUNTY, 7.5 MINUTE QUAD (TOPOGRAPHIC MAP) PUBLISHED BY THE UNITED STATES DEPARTMENT OF THE INTERIOR, GEOLOGICAL SURVEY. SAID ELEVATION IS MARKED AS BEING 6672 FEET.



UELS, LLC
Corporate Office * 85 South 200 East
Vernal, UT 84078 * (435) 789-1017

SWN PRODUCTION COMPANY, LLC

KLINE 7-91 1-23
NE 1/4 NW 1/4, SECTION 23, T7N, R91W, 6th
P.M. MOFFAT COUNTY, COLORADO

SURVEYED BY: MARTIN PIERCE, C.R.	DATE: 10-19-15
DRAWN BY: C.D.L.	DATE DRAWN: 10-23-15
SCALE: 1" = 1000'	REVISED: 11-12-15 T.B.

WELL LOCATION PLAT

PROPERTY NUMBER: 3001154204