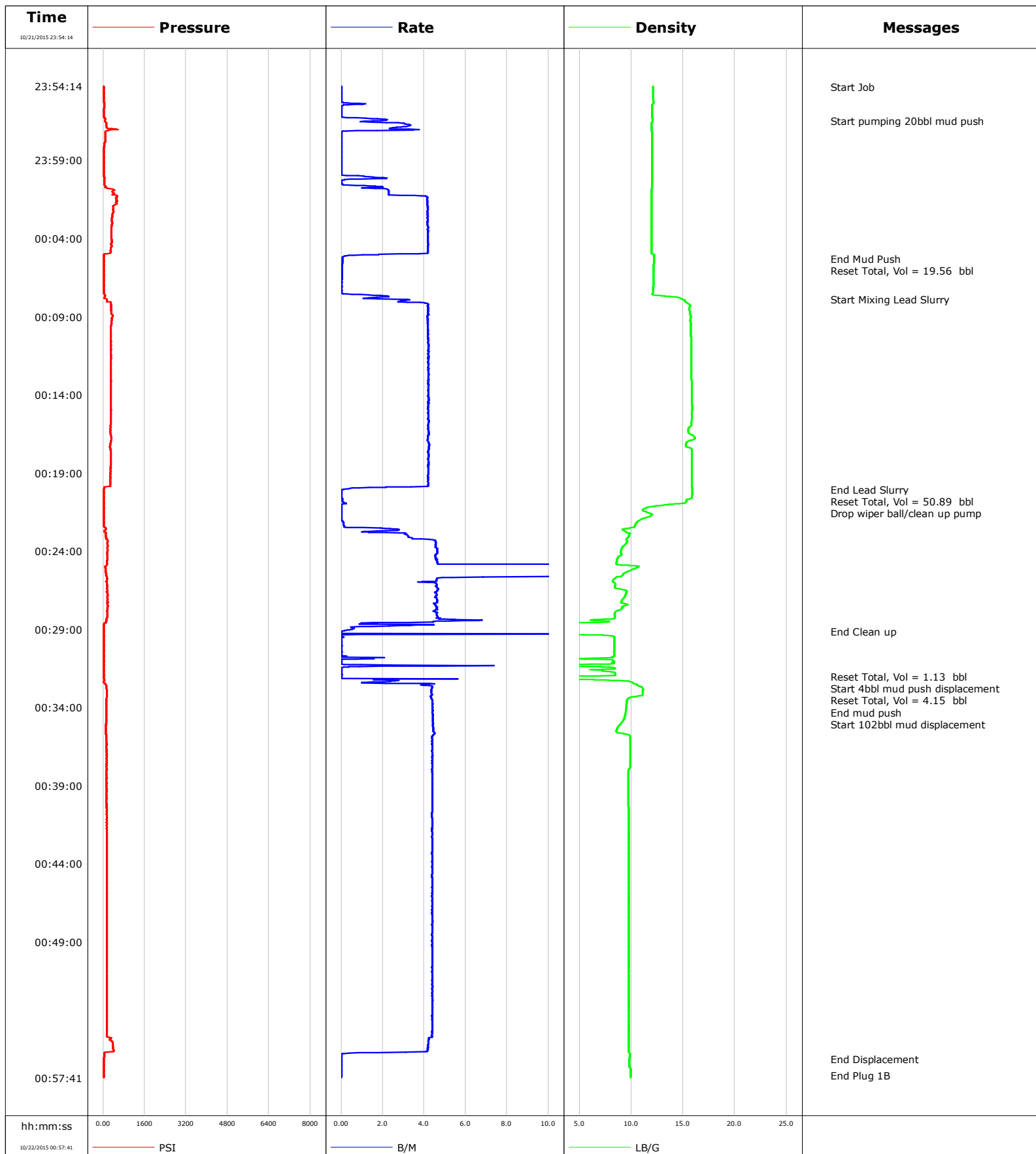


Well Thermo
Field Wattenberg
Engineer Chris Valerio/Taylor Baird
Country United States

Client Anadarko
SIR No. CWJN-01443
Job Type PA
Job Date 10-21-2015



Cementing Service Report

				Customer Anadarko			Job Number CWJN-01443				
Well Thermo 38N-33HHZ			Location (legal)			Schlumberger Location			Job Start Oct/21/2015		
Field Wattenberg		Formation Name/Type Shale		Deviation deg		Bit Size 8.8 in		Well MD 7353.0 ft		Well TVD 7346.0 ft	
County Weld		State/Province Colorado		BHP psi		BHST 214 degF		BHCT 166 degF		Pore Press. Gradient lb/gal	
Well Master 0631652607		API/UWI 0512340970000									
Rig Name Xtreme #24		Drilled For Oil		Service Via Land		Casing/ Liner					
						Depth, ft		Size, in		Weight, lb/ft	
										Grade	
										Thread	
Offshore Zone		Well Class Old		Well Type Development		1883.0		9.6		36.0	
						0.0		0.0		0.0	
Drilling Fluid Type Other		Max. Density 9.80 lb/gal		Plastic Viscosity cP		Tubing/Drill Pipe					
						T/D		Depth, ft		Size, in	
										Weight, lb/ft	
										Grade	
										Thread	
Service Line Cementing		Job Type P&A				D		6553.0		5.0	
						T		7353.0		2.9	
										19.5	
										S135	
										J55	
										EUE	
Max. Allowed Tub. Press 3500 psi		Max. Allowed Ann. Press psi		WH Connection 5" IF DP pin		Perforations/Open Hole					
						Top, ft		Bottom, ft		shot/ft	
										No. of Shots	
										Total Interval	
						ft		ft		ft	
						ft		ft		Diameter	
						ft		ft		in	
						Treat Down Drill Pipe		Displacement 106.2 bbl		Packer Type	
										Packer Depth	
										ft	
						Tubing Vol. 120.9 bbl		Casing Vol. bbl		Annular Vol. bbl	
										Openhole Vol. bbl	
Casing/Tubing Secured <input checked="" type="checkbox"/>		1 Hole Vol. Circulated prior to Cement <input checked="" type="checkbox"/>				Casing Tools			Squeeze Job		
Lift Pressure psi						Shoe Type			Squeeze Type		
Pipe Rotated <input type="checkbox"/>		Pipe Reciprocated <input type="checkbox"/>				Shoe Depth ft			Tool Type		
No. Centralizers		Top Plugs		Bottom Plugs		Stage Tool Type			Tool Depth ft		
Cement Head Type						Stage Tool Depth ft			Tail Pipe Size in		
Job Scheduled For Oct/21/2015 11:00		Arrived on Location Oct/21/2015 11:00		Leave Location Oct/22/2015 06:00		Collar Type			Tail Pipe Depth ft		
						Collar Depth ft			Sqz. Total Vol. bbl		
Date	Time 24-hr clock	Treating Pressure PSI	Flow Rate B/M	Density LB/G	Volume BBL	Message					
10/21/2015	23:54:14	35	0.0	12.10	224.0	Started Acquisition					
10/21/2015	23:54:16	35	0.0	12.10	224.0	Start Job					
10/21/2015	23:56:28	72	1.5	12.05	224.4	Start pumping 20bbl mud push					
10/21/2015	23:59:14	31	0.0	12.00	226.2						
10/22/2015	00:04:14	329	4.2	11.97	240.2						
10/22/2015	00:05:17	32	0.1	12.19	243.6	End Mud Push					
10/22/2015	00:05:22	31	0.1	12.19	243.6	Reset Total, Vol = 19.56 bbl					
10/22/2015	00:07:53	147	2.8	14.91	244.2	Start Mixing Lead Slurry					
10/22/2015	00:09:14	338	4.2	15.70	249.5						
10/22/2015	00:14:14	296	4.2	15.82	270.5						
10/22/2015	00:19:14	283	4.2	15.83	291.5						
10/22/2015	00:20:04	34	0.1	15.87	294.5	End Lead Slurry					
10/22/2015	00:20:13	35	0.0	15.87	294.5	Reset Total, Vol = 50.89 bbl					
10/22/2015	00:20:34	34	0.0	15.85	294.5	Drop wiper ball/clean up pump					
10/22/2015	00:24:14	166	4.5	9.08	301.0						
10/22/2015	00:29:09	30	0.0	0.07	334.2	End Clean up					
10/22/2015	00:29:14	31	0.0	0.07	334.2						
10/22/2015	00:32:01	33	0.0	1.76	335.3	Reset Total, Vol = 1.13 bbl					
10/22/2015	00:32:29	91	4.5	10.35	336.0	Start 4bbl mud push displacement					
10/22/2015	00:33:16	143	4.3	10.78	339.4	Reset Total, Vol = 4.15 bbl					
10/22/2015	00:33:27	132	4.4	9.67	340.2	End mud push					

Well Thermo 38N-33HHZ			Field Wattenberg		Job Start Oct/21/2015	Customer Anadarko		Job Number CWJN-01443	
Date	Time 24-hr clock	Treating Pressure PSI	Flow Rate B/M	Density LB/G	Volume BBL	Message			
10/22/2015	00:34:14	125	4.4	9.48	343.6				
10/22/2015	00:39:14	136	4.4	9.71	365.7				
10/22/2015	00:44:14	142	4.4	9.76	387.6				
10/22/2015	00:49:14	144	4.4	9.76	409.5				
10/22/2015	00:54:14	150	4.4	9.76	431.5				
10/22/2015	00:56:29	37	0.0	9.83	439.5	End Displacement			

Post Job Summary

Average Pump Rates, bbl/min					Volume of Fluid Injected, bbl					
Slurry 3.9	N2	Mud	Maximum Rate 4.5	Total Slurry 51.3	Mud 0.0	Spacer 24.0	N2			
Treating Pressure Summary, psi					Breakdown Fluid					
Maximum 576	Final 38	Average 162	Bump Plug to	Breakdown	Type	Volume bbl	Density lb/gal			
Avg. N2 Percent %	Designed Slurry Volume 51.3 bbl		Displacement 101.0 bbl	Mix Water Temp 55 degF	Cement Circulated to Surface? <input type="checkbox"/>		Volume bbl			
					Washed Thru Perfs <input type="checkbox"/>		To ft			
Customer or Authorized Representative			Schlumberger Supervisor			Circulation Lost <input type="checkbox"/>	Job Completed <input checked="" type="checkbox"/>			
Tobin Sinclair			Chris Valerio/Taylor Baird			-	-			