

PDC ENERGY

**WELD COUNTY, COLORADO
NW SW SEC. 17 T5N R64W 6th P.M.
CECIL'S KERSEY FARM 17K-334**

ORIGINAL WELLBORE

16 September, 2015

Plan: PROPOSAL #2





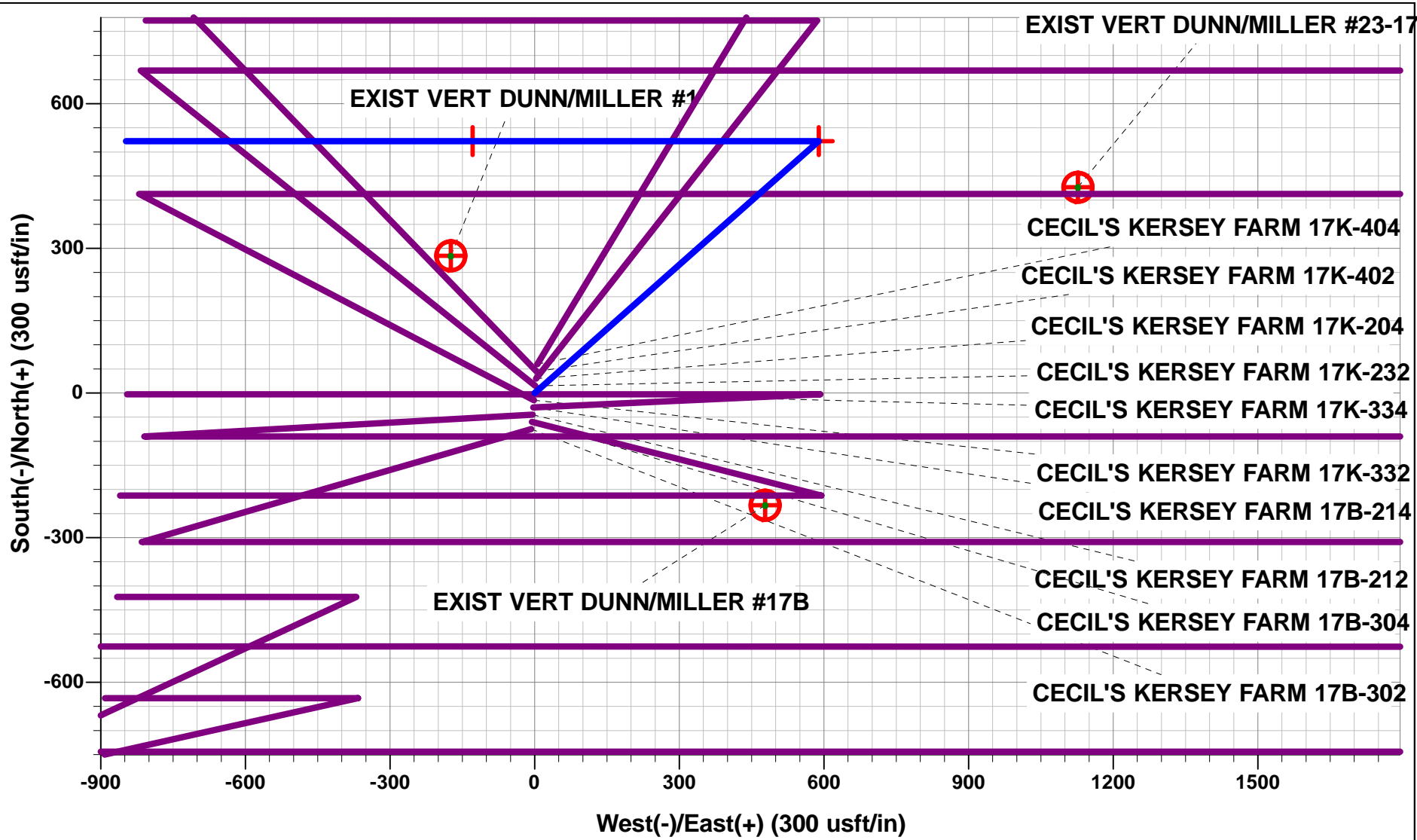
Project: WELD COUNTY, COLORADO
Site: NW SW SEC. 17 T5N R64W 6th P.M.
Well: CECIL'S KERSEY FARM 17K-334
Wellbore: ORIGINAL WELLBORE
Design: PROPOSAL #2

ANNOTATIONS

TVD	MD	Inc	Azi	+N/-S	+E/-W	VSec	Dep	Annotation
1450.0	1450.0	0.00	0.00	0.0	0.0	0.0	0.0	START NUDGE (2°/100ft BUR)
2045.4	2049.8	12.00	48.45	41.5	46.8	-42.9	62.6	EOB TO 12° INC
5163.4	5237.4	12.00	48.45	480.9	542.6	-497.4	725.0	END OF TANGENT
5758.8	5837.1	0.00	48.45	522.4	589.4	-540.4	787.6	EOD TO VERTICAL
6075.8	6154.1	0.00	0.00	522.4	589.4	-540.4	787.6	KOP (8°/100ft BUR)
6792.0	7281.1	90.15	270.00	522.4	-128.7	174.9	1505.7	7" ICP *NEW* - CECIL'S KERSEY FARM 17K-334 (P2)
6777.0	12974.5	90.15	270.00	522.4	-5822.1	5845.5	7199.1	BHL - CECIL'S KERSEY FARM 17K-334 (P2)

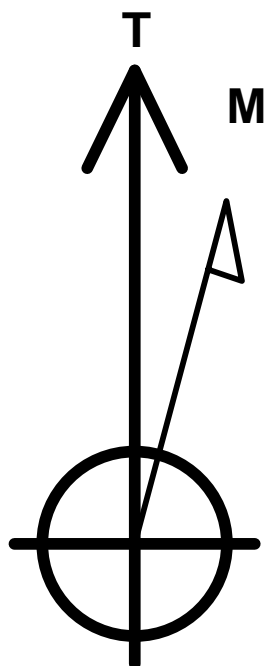
WELLBORE TARGET DETAILS (LAT/LONG)

Name	TVD	+N/-S	+E/-W	Latitude	Longitude
KOP - CECIL'S KERSEY FARM 17K-334 (P2)	6075.8	522.4	589.4	40.398013	-104.578290
7" ICP *NEW* - CECIL'S KERSEY FARM 17K-334 (P2)	6792.0	522.4	-128.7	40.398013	-104.580868
BHL - CECIL'S KERSEY FARM 17K-334 (P2)	6777.0	522.4	-5822.1	40.398011	-104.601309



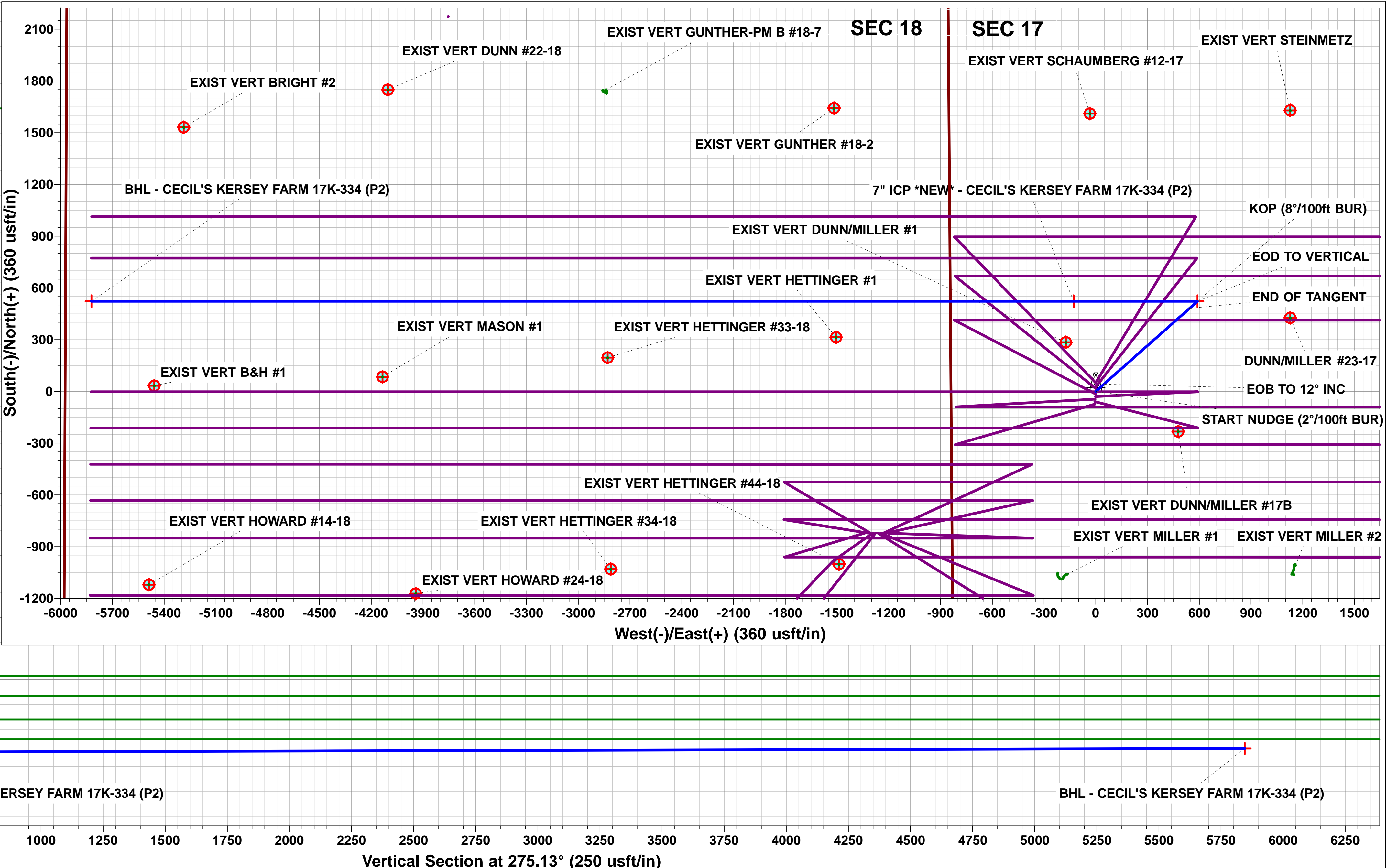
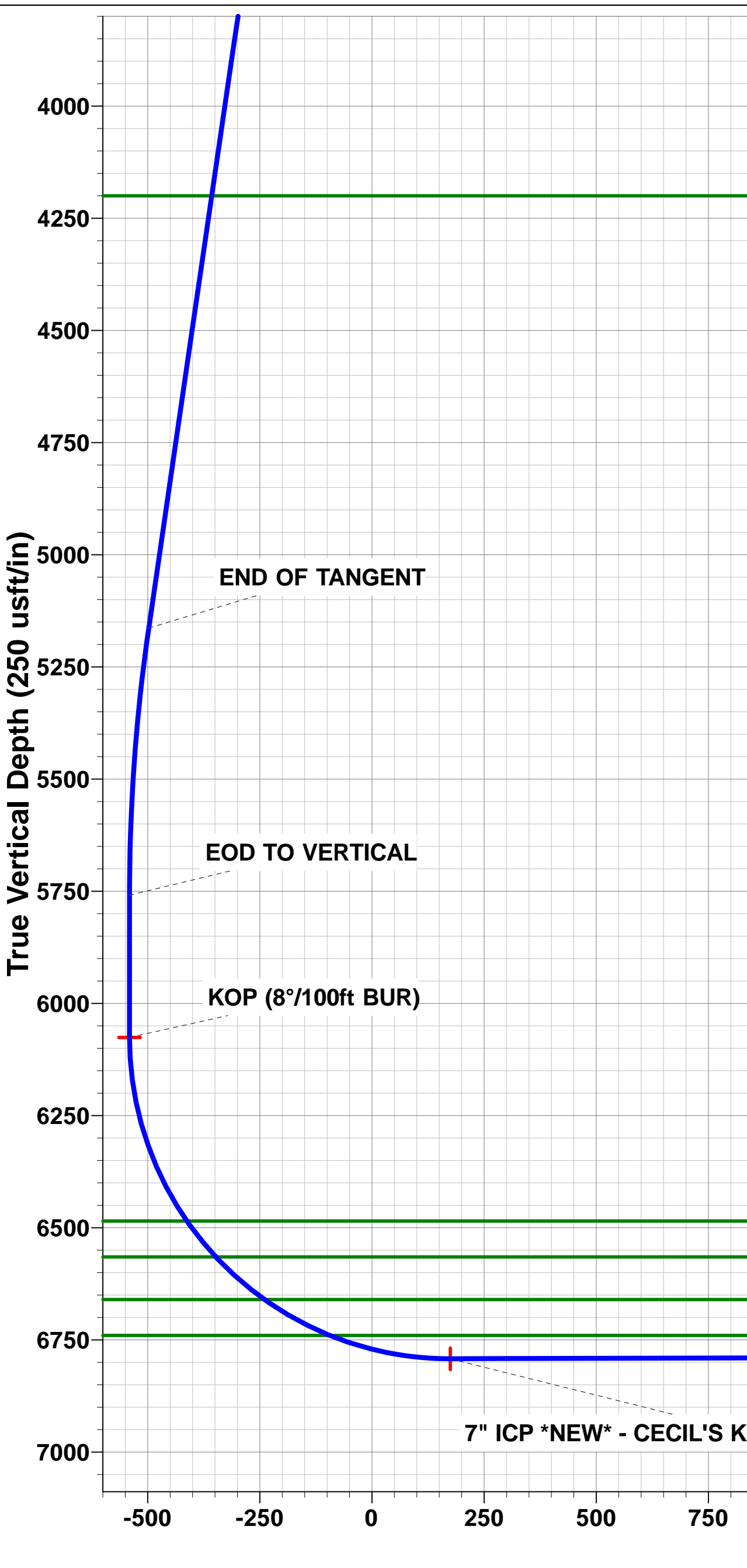
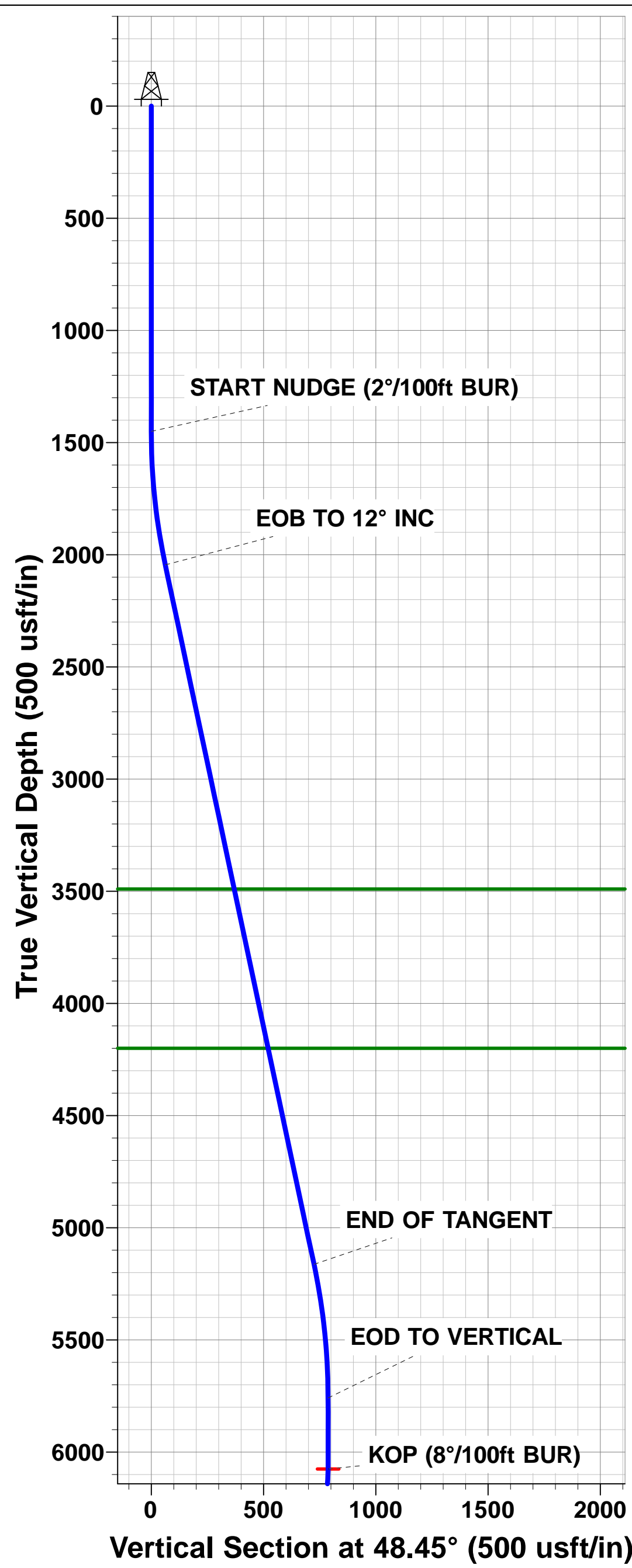
PROPOSED LOCAL COORDINATES:

SHL: 1695ft FSL & 840ft FWL of Sec 17
7" ICP *NEW*: 2218.4ft FSL & 714.5ft FWL of Sec 17
BHL: 2245ft FSL & 150ft FWL of Sec 18



Azimuths to True North
Magnetic North: 8.30°

Magnetic Field
Strength: 52614.6snT
Dip Angle: 66.93°
Date: 06/09/2015
Model: IGRF2015



Planning Report



Database:	EDM 5000.1 Single User Db	Local Co-ordinate Reference:	Well CECIL'S KERSEY FARM 17K-334
Company:	PDC ENERGY	TVD Reference:	KB-EST @ 4636.0usft (Original Well Elev)
Project:	WELD COUNTY, COLORADO	MD Reference:	KB-EST @ 4636.0usft (Original Well Elev)
Site:	NW SW SEC. 17 T5N R64W 6th P.M.	North Reference:	True
Well:	CECIL'S KERSEY FARM 17K-334	Survey Calculation Method:	Minimum Curvature
Wellbore:	ORIGINAL WELLBORE		
Design:	PROPOSAL #2		

Project	WELD COUNTY, COLORADO		
Map System:	US State Plane 1983	System Datum:	Mean Sea Level
Geo Datum:	North American Datum 1983		
Map Zone:	Colorado Northern Zone		Using geodetic scale factor

Site	NW SW SEC. 17 T5N R64W 6th P.M.		
Site Position:		Northing:	1,388,702.00 usft
From:	Lat/Long	Easting:	3,256,129.74 usft
Position Uncertainty:	0.0 usft	Slot Radius:	1.10000ft
		Latitude:	40.396743
		Longitude:	-104.580386
		Grid Convergence:	0.59 °

Well	CECIL'S KERSEY FARM 17K-334		
Well Position	+N/-S	-59.8 usft	Northing:
	+E/-W	-5.6 usft	Easting:
Position Uncertainty		0.0 usft	Wellhead Elevation:
			Latitude:
			Longitude:
			Ground Level:

Wellbore	ORIGINAL WELLBORE				
Magnetics	Model Name	Sample Date	Declination (°)	Dip Angle (°)	Field Strength (nT)
	IGRF2015	06/09/2015	8.30	66.93	52,615

Design	PROPOSAL #2			
Audit Notes:				
Version:	Phase:	PROTOTYPE	Tie On Depth:	0.0
Vertical Section:	Depth From (TVD) (usft)	+N/-S (usft)	+E/-W (usft)	Direction (°)
	6,777.0	0.0	0.0	275.13

Plan Sections											
MD (usft)	Inc (°)	Azi (°)	Vertical Depth	SS (usft)	+N/-S (usft)	+E/-W (usft)	Dogleg Rate (°/100usf)	Build Rate (°/100usf)	Turn Rate (°/100usf)	TFO (°)	Target
0.0	0.00	0.00	0.0	-4,636.0	0.0	0.0	0.00	0.00	0.00	0.00	
1,450.0	0.00	0.00	1,450.0	-3,186.0	0.0	0.0	0.00	0.00	0.00	0.00	
2,049.8	12.00	48.45	2,045.4	-2,590.6	41.5	46.8	2.00	2.00	0.00	48.45	
5,237.4	12.00	48.45	5,163.4	527.4	480.9	542.6	0.00	0.00	0.00	0.00	
5,837.1	0.00	0.00	5,758.8	1,122.8	522.4	589.4	2.00	-2.00	0.00	180.00	
6,154.1	0.00	0.00	6,075.8	1,439.8	522.4	589.4	0.00	0.00	0.00	0.00	KOP - CECIL'S KEI
7,281.1	90.15	270.00	6,792.0	2,156.0	522.4	-128.7	8.00	8.00	-7.99	270.00	7" ICP *NEW* - CEI
12,974.5	90.15	270.00	6,777.0	2,141.0	522.4	-5,822.1	0.00	0.00	0.00	-171.90	BHL - CECIL'S KEF

Planning Report



Database:	EDM 5000.1 Single User Db	Local Co-ordinate Reference:	Well CECIL'S KERSEY FARM 17K-334
Company:	PDC ENERGY	TVD Reference:	KB-EST @ 4636.0usft (Original Well Elev)
Project:	WELD COUNTY, COLORADO	MD Reference:	KB-EST @ 4636.0usft (Original Well Elev)
Site:	NW SW SEC. 17 T5N R64W 6th P.M.	North Reference:	True
Well:	CECIL'S KERSEY FARM 17K-334	Survey Calculation Method:	Minimum Curvature
Wellbore:	ORIGINAL WELLBORE		
Design:	PROPOSAL #2		

Planned Survey

MD (usft)	Inc (°)	Azi (°)	TVD (usft)	SS (usft)	+N/-S (usft)	+E/-W (usft)	Vertical Section (usft)	Dogleg Rate (°/100usft)	Build Rate (°/100usft)	Turn Rate (°/100usft)
0.0	0.00	0.00	0.0	4,636.00	0.0	0.0	0.0	0.00	0.00	0.00
100.0	0.00	0.00	100.0	4,536.00	0.0	0.0	0.0	0.00	0.00	0.00
200.0	0.00	0.00	200.0	4,436.00	0.0	0.0	0.0	0.00	0.00	0.00
300.0	0.00	0.00	300.0	4,336.00	0.0	0.0	0.0	0.00	0.00	0.00
400.0	0.00	0.00	400.0	4,236.00	0.0	0.0	0.0	0.00	0.00	0.00
500.0	0.00	0.00	500.0	4,136.00	0.0	0.0	0.0	0.00	0.00	0.00
600.0	0.00	0.00	600.0	4,036.00	0.0	0.0	0.0	0.00	0.00	0.00
700.0	0.00	0.00	700.0	3,936.00	0.0	0.0	0.0	0.00	0.00	0.00
800.0	0.00	0.00	800.0	3,836.00	0.0	0.0	0.0	0.00	0.00	0.00
900.0	0.00	0.00	900.0	3,736.00	0.0	0.0	0.0	0.00	0.00	0.00
1,000.0	0.00	0.00	1,000.0	3,636.00	0.0	0.0	0.0	0.00	0.00	0.00
1,100.0	0.00	0.00	1,100.0	3,536.00	0.0	0.0	0.0	0.00	0.00	0.00
1,200.0	0.00	0.00	1,200.0	3,436.00	0.0	0.0	0.0	0.00	0.00	0.00
1,300.0	0.00	0.00	1,300.0	3,336.00	0.0	0.0	0.0	0.00	0.00	0.00
1,400.0	0.00	0.00	1,400.0	3,236.00	0.0	0.0	0.0	0.00	0.00	0.00
START NUDGE (2°/100ft BUR)										
1,450.0	0.00	0.00	1,450.0	3,186.00	0.0	0.0	0.0	0.00	0.00	0.00
1,500.0	1.00	48.45	1,500.0	3,136.00	0.3	0.3	-0.3	2.00	2.00	0.00
1,600.0	3.00	48.45	1,599.9	3,036.07	2.6	2.9	-2.7	2.00	2.00	0.00
1,700.0	5.00	48.45	1,699.7	2,936.32	7.2	8.2	-7.5	2.00	2.00	0.00
1,800.0	7.00	48.45	1,799.1	2,836.87	14.2	16.0	-14.7	2.00	2.00	0.00
1,900.0	9.00	48.45	1,898.2	2,737.85	23.4	26.4	-24.2	2.00	2.00	0.00
2,000.0	11.00	48.45	1,996.6	2,639.37	34.9	39.4	-36.1	2.00	2.00	0.00
EOB TO 12° INC										
2,049.8	12.00	48.45	2,045.4	2,590.57	41.5	46.8	-42.9	2.00	2.00	0.00
2,100.0	12.00	48.45	2,094.5	2,541.47	48.4	54.6	-50.1	0.00	0.00	0.00
2,200.0	12.00	48.45	2,192.3	2,443.65	62.2	70.2	-64.3	0.00	0.00	0.00
2,300.0	12.00	48.45	2,290.2	2,345.84	76.0	85.7	-78.6	0.00	0.00	0.00
2,400.0	12.00	48.45	2,388.0	2,248.02	89.8	101.3	-92.9	0.00	0.00	0.00
2,500.0	12.00	48.45	2,485.8	2,150.20	103.6	116.8	-107.1	0.00	0.00	0.00
2,600.0	12.00	48.45	2,583.6	2,052.39	117.3	132.4	-121.4	0.00	0.00	0.00
2,700.0	12.00	48.45	2,681.4	1,954.57	131.1	147.9	-135.6	0.00	0.00	0.00
2,800.0	12.00	48.45	2,779.2	1,856.75	144.9	163.5	-149.9	0.00	0.00	0.00
2,900.0	12.00	48.45	2,877.1	1,758.94	158.7	179.1	-164.2	0.00	0.00	0.00
3,000.0	12.00	48.45	2,974.9	1,661.12	172.5	194.6	-178.4	0.00	0.00	0.00
3,100.0	12.00	48.45	3,072.7	1,563.30	186.3	210.2	-192.7	0.00	0.00	0.00
3,200.0	12.00	48.45	3,170.5	1,465.49	200.1	225.7	-206.9	0.00	0.00	0.00
3,300.0	12.00	48.45	3,268.3	1,367.67	213.8	241.3	-221.2	0.00	0.00	0.00
3,400.0	12.00	48.45	3,366.1	1,269.85	227.6	256.8	-235.4	0.00	0.00	0.00
3,500.0	12.00	48.45	3,464.0	1,172.04	241.4	272.4	-249.7	0.00	0.00	0.00
PARKMAN SANDSTONE										
3,526.6	12.00	48.45	3,490.0	1,146.00	245.1	276.5	-253.5	0.00	0.00	0.00
3,600.0	12.00	48.45	3,561.8	1,074.22	255.2	287.9	-264.0	0.00	0.00	0.00
3,700.0	12.00	48.45	3,659.6	976.40	269.0	303.5	-278.2	0.00	0.00	0.00
3,800.0	12.00	48.45	3,757.4	878.59	282.8	319.0	-292.5	0.00	0.00	0.00
3,900.0	12.00	48.45	3,855.2	780.77	296.5	334.6	-306.7	0.00	0.00	0.00
4,000.0	12.00	48.45	3,953.0	682.95	310.3	350.1	-321.0	0.00	0.00	0.00
4,100.0	12.00	48.45	4,050.9	585.14	324.1	365.7	-335.3	0.00	0.00	0.00
4,200.0	12.00	48.45	4,148.7	487.32	337.9	381.2	-349.5	0.00	0.00	0.00
SUSSEX SANDSTONE										
4,252.5	12.00	48.45	4,200.0	436.00	345.1	389.4	-357.0	0.00	0.00	0.00
4,300.0	12.00	48.45	4,246.5	389.51	351.7	396.8	-363.8	0.00	0.00	0.00
4,400.0	12.00	48.45	4,344.3	291.69	365.5	412.3	-378.0	0.00	0.00	0.00
4,500.0	12.00	48.45	4,442.1	193.87	379.3	427.9	-392.3	0.00	0.00	0.00

Planning Report



Database:	EDM 5000.1 Single User Db	Local Co-ordinate Reference:	Well CECIL'S KERSEY FARM 17K-334
Company:	PDC ENERGY	TVD Reference:	KB-EST @ 4636.0usft (Original Well Elev)
Project:	WELD COUNTY, COLORADO	MD Reference:	KB-EST @ 4636.0usft (Original Well Elev)
Site:	NW SW SEC. 17 T5N R64W 6th P.M.	North Reference:	True
Well:	CECIL'S KERSEY FARM 17K-334	Survey Calculation Method:	Minimum Curvature
Wellbore:	ORIGINAL WELLBORE		
Design:	PROPOSAL #2		

Planned Survey										
MD (usft)	Inc (°)	Azi (°)	TVD (usft)	SS (usft)	+N/-S (usft)	+E/-W (usft)	Vertical Section (usft)	Dogleg Rate (°/100usft)	Build Rate (°/100usft)	Turn Rate (°/100usft)
4,600.0	12.00	48.45	4,539.9	96.06	393.0	443.5	-406.6	0.00	0.00	0.00
4,700.0	12.00	48.45	4,637.8	-1.76	406.8	459.0	-420.8	0.00	0.00	0.00
4,800.0	12.00	48.45	4,735.6	-99.58	420.6	474.6	-435.1	0.00	0.00	0.00
4,900.0	12.00	48.45	4,833.4	-197.39	434.4	490.1	-449.3	0.00	0.00	0.00
5,000.0	12.00	48.45	4,931.2	-295.21	448.2	505.7	-463.6	0.00	0.00	0.00
5,100.0	12.00	48.45	5,029.0	-393.03	462.0	521.2	-477.9	0.00	0.00	0.00
5,200.0	12.00	48.45	5,126.8	-490.84	475.8	536.8	-492.1	0.00	0.00	0.00
END OF TANGENT										
5,237.4	12.00	48.45	5,163.4	-527.43	480.9	542.6	-497.4	0.00	0.00	0.00
5,300.0	10.74	48.45	5,224.8	-588.80	489.1	551.8	-505.9	2.00	-2.00	0.00
5,400.0	8.74	48.45	5,323.3	-687.35	500.3	564.5	-517.5	2.00	-2.00	0.00
5,500.0	6.74	48.45	5,422.4	-786.43	509.3	574.6	-526.8	2.00	-2.00	0.00
5,600.0	4.74	48.45	5,521.9	-885.93	515.9	582.1	-533.6	2.00	-2.00	0.00
5,700.0	2.74	48.45	5,621.7	-985.71	520.2	586.9	-538.1	2.00	-2.00	0.00
5,800.0	0.74	48.45	5,721.7	-1,085.66	522.2	589.2	-540.2	2.00	-2.00	0.00
EOD TO VERTICAL										
5,837.1	0.00	48.45	5,758.8	-1,122.76	522.4	589.4	-540.4	2.00	-2.00	0.00
5,900.0	0.00	0.00	5,821.7	-1,185.66	522.4	589.4	-540.4	0.00	0.00	0.00
6,000.0	0.00	0.00	5,921.7	-1,285.66	522.4	589.4	-540.4	0.00	0.00	0.00
6,100.0	0.00	0.00	6,021.7	-1,385.66	522.4	589.4	-540.4	0.00	0.00	0.00
KOP (8°/100ft BUR)										
6,154.1	0.00	0.00	6,075.8	-1,439.76	522.4	589.4	-540.4	0.00	0.00	0.00
6,200.0	3.67	270.00	6,121.6	-1,485.62	522.4	587.9	-538.9	7.99	7.99	0.00
6,300.0	11.67	270.00	6,220.6	-1,584.65	522.4	574.6	-525.6	8.00	8.00	0.00
6,400.0	19.67	270.00	6,316.9	-1,680.86	522.4	547.6	-498.7	8.00	8.00	0.00
6,500.0	27.67	270.00	6,408.4	-1,772.37	522.4	507.5	-458.8	8.00	8.00	0.00
SHARON SPRINGS										
6,589.7	34.84	270.00	6,485.0	-1,849.00	522.4	461.0	-412.5	8.00	8.00	0.00
6,600.0	35.67	270.00	6,493.4	-1,857.41	522.4	455.0	-406.5	8.00	8.00	0.00
NIOBRARA A										
6,692.7	43.08	270.00	6,565.0	-1,929.00	522.4	396.3	-348.0	8.00	8.00	0.00
6,700.0	43.67	270.00	6,570.3	-1,934.32	522.4	391.3	-343.0	8.00	8.00	0.00
6,800.0	51.67	270.00	6,637.6	-2,001.61	522.4	317.4	-269.4	8.00	8.00	0.00
NIOBRARA B										
6,837.3	54.66	270.00	6,660.0	-2,024.00	522.4	287.5	-239.7	8.00	8.00	0.00
6,900.0	59.67	270.00	6,694.0	-2,057.96	522.4	234.9	-187.3	8.00	8.00	0.00
7,000.0	67.67	270.00	6,738.3	-2,102.29	522.4	145.3	-98.1	8.00	8.00	0.00
NIOBRARA C										
7,004.5	68.03	270.00	6,740.0	-2,104.00	522.4	141.1	-93.9	8.00	8.00	0.00
7,100.0	75.67	270.00	6,769.7	-2,133.71	522.4	50.5	-3.6	8.00	8.00	0.00
7,200.0	83.67	270.00	6,787.6	-2,151.63	522.4	-47.8	94.3	8.00	8.00	0.00
7" ICP *NEW* - CECIL'S KERSEY FARM 17K-334 (P2)										
7,281.1	90.15	270.00	6,792.0	-2,156.00	522.4	-128.7	174.9	8.00	8.00	0.00
7,300.0	90.15	270.00	6,791.9	-2,155.95	522.4	-147.6	193.7	0.00	0.00	0.00
7,400.0	90.15	270.00	6,791.7	-2,155.68	522.4	-247.6	293.3	0.00	0.00	0.00
7,500.0	90.15	270.00	6,791.4	-2,155.42	522.4	-347.6	392.9	0.00	0.00	0.00
7,600.0	90.15	270.00	6,791.2	-2,155.16	522.4	-447.6	492.5	0.00	0.00	0.00
7,700.0	90.15	270.00	6,790.9	-2,154.89	522.4	-547.6	592.1	0.00	0.00	0.00
7,800.0	90.15	270.00	6,790.6	-2,154.63	522.4	-647.6	691.7	0.00	0.00	0.00
7,900.0	90.15	270.00	6,790.4	-2,154.36	522.4	-747.6	791.3	0.00	0.00	0.00
8,000.0	90.15	270.00	6,790.1	-2,154.10	522.4	-847.6	890.9	0.00	0.00	0.00
8,100.0	90.15	270.00	6,789.8	-2,153.83	522.4	-947.6	990.5	0.00	0.00	0.00
8,200.0	90.15	270.00	6,789.6	-2,153.57	522.4	-1,047.6	1,090.1	0.00	0.00	0.00

Planning Report



Database:	EDM 5000.1 Single User Db	Local Co-ordinate Reference:	Well CECIL'S KERSEY FARM 17K-334
Company:	PDC ENERGY	TVD Reference:	KB-EST @ 4636.0usft (Original Well Elev)
Project:	WELD COUNTY, COLORADO	MD Reference:	KB-EST @ 4636.0usft (Original Well Elev)
Site:	NW SW SEC. 17 T5N R64W 6th P.M.	North Reference:	True
Well:	CECIL'S KERSEY FARM 17K-334	Survey Calculation Method:	Minimum Curvature
Wellbore:	ORIGINAL WELLBORE		
Design:	PROPOSAL #2		

Planned Survey										
MD (usft)	Inc (°)	Azi (°)	TVD (usft)	SS (usft)	+N/-S (usft)	+E/-W (usft)	Vertical Section (usft)	Dogleg Rate (°/100usft)	Build Rate (°/100usft)	Turn Rate (°/100usft)
8,300.0	90.15	270.00	6,789.3	-2,153.30	522.4	-1,147.6	1,189.7	0.00	0.00	0.00
8,400.0	90.15	270.00	6,789.0	-2,153.04	522.4	-1,247.6	1,289.3	0.00	0.00	0.00
8,500.0	90.15	270.00	6,788.8	-2,152.77	522.4	-1,347.6	1,388.9	0.00	0.00	0.00
8,600.0	90.15	270.00	6,788.5	-2,152.51	522.4	-1,447.6	1,488.5	0.00	0.00	0.00
8,700.0	90.15	270.00	6,788.2	-2,152.25	522.4	-1,547.6	1,588.1	0.00	0.00	0.00
8,800.0	90.15	270.00	6,788.0	-2,151.98	522.4	-1,647.6	1,687.7	0.00	0.00	0.00
8,900.0	90.15	270.00	6,787.7	-2,151.72	522.4	-1,747.6	1,787.3	0.00	0.00	0.00
9,000.0	90.15	270.00	6,787.5	-2,151.45	522.4	-1,847.6	1,886.9	0.00	0.00	0.00
9,100.0	90.15	270.00	6,787.2	-2,151.19	522.4	-1,947.6	1,986.5	0.00	0.00	0.00
9,200.0	90.15	270.00	6,786.9	-2,150.93	522.4	-2,047.6	2,086.1	0.00	0.00	0.00
9,300.0	90.15	270.00	6,786.7	-2,150.66	522.4	-2,147.6	2,185.7	0.00	0.00	0.00
9,400.0	90.15	270.00	6,786.4	-2,150.40	522.4	-2,247.6	2,285.3	0.00	0.00	0.00
9,500.0	90.15	270.00	6,786.1	-2,150.13	522.4	-2,347.6	2,384.9	0.00	0.00	0.00
9,600.0	90.15	270.00	6,785.9	-2,149.87	522.4	-2,447.6	2,484.5	0.00	0.00	0.00
9,700.0	90.15	270.00	6,785.6	-2,149.61	522.4	-2,547.6	2,584.1	0.00	0.00	0.00
9,800.0	90.15	270.00	6,785.3	-2,149.34	522.4	-2,647.6	2,683.7	0.00	0.00	0.00
9,900.0	90.15	270.00	6,785.1	-2,149.08	522.4	-2,747.6	2,783.3	0.00	0.00	0.00
10,000.0	90.15	270.00	6,784.8	-2,148.82	522.4	-2,847.6	2,882.9	0.00	0.00	0.00
10,100.0	90.15	270.00	6,784.6	-2,148.55	522.4	-2,947.6	2,982.5	0.00	0.00	0.00
10,200.0	90.15	270.00	6,784.3	-2,148.29	522.4	-3,047.6	3,082.1	0.00	0.00	0.00
10,300.0	90.15	270.00	6,784.0	-2,148.03	522.4	-3,147.6	3,181.7	0.00	0.00	0.00
10,400.0	90.15	270.00	6,783.8	-2,147.76	522.4	-3,247.6	3,281.3	0.00	0.00	0.00
10,500.0	90.15	270.00	6,783.5	-2,147.50	522.4	-3,347.6	3,380.9	0.00	0.00	0.00
10,600.0	90.15	270.00	6,783.2	-2,147.24	522.4	-3,447.6	3,480.5	0.00	0.00	0.00
10,700.0	90.15	270.00	6,783.0	-2,146.97	522.4	-3,547.6	3,580.1	0.00	0.00	0.00
10,800.0	90.15	270.00	6,782.7	-2,146.71	522.4	-3,647.6	3,679.7	0.00	0.00	0.00
10,900.0	90.15	270.00	6,782.4	-2,146.45	522.4	-3,747.6	3,779.3	0.00	0.00	0.00
11,000.0	90.15	270.00	6,782.2	-2,146.18	522.4	-3,847.6	3,878.9	0.00	0.00	0.00
11,100.0	90.15	270.00	6,781.9	-2,145.92	522.4	-3,947.6	3,978.5	0.00	0.00	0.00
11,200.0	90.15	270.00	6,781.7	-2,145.66	522.4	-4,047.6	4,078.1	0.00	0.00	0.00
11,300.0	90.15	270.00	6,781.4	-2,145.39	522.4	-4,147.6	4,177.7	0.00	0.00	0.00
11,400.0	90.15	270.00	6,781.1	-2,145.13	522.4	-4,247.6	4,277.3	0.00	0.00	0.00
11,500.0	90.15	270.00	6,780.9	-2,144.87	522.4	-4,347.6	4,376.9	0.00	0.00	0.00
11,600.0	90.15	270.00	6,780.6	-2,144.61	522.4	-4,447.6	4,476.5	0.00	0.00	0.00
11,700.0	90.15	270.00	6,780.3	-2,144.34	522.4	-4,547.6	4,576.1	0.00	0.00	0.00
11,800.0	90.15	270.00	6,780.1	-2,144.08	522.4	-4,647.6	4,675.7	0.00	0.00	0.00
11,900.0	90.15	270.00	6,779.8	-2,143.82	522.4	-4,747.6	4,775.3	0.00	0.00	0.00
12,000.0	90.15	270.00	6,779.6	-2,143.56	522.4	-4,847.6	4,874.9	0.00	0.00	0.00
12,100.0	90.15	270.00	6,779.3	-2,143.29	522.4	-4,947.6	4,974.5	0.00	0.00	0.00
12,200.0	90.15	270.00	6,779.0	-2,143.03	522.4	-5,047.6	5,074.1	0.00	0.00	0.00
12,300.0	90.15	270.00	6,778.8	-2,142.77	522.4	-5,147.6	5,173.7	0.00	0.00	0.00
12,400.0	90.15	270.00	6,778.5	-2,142.51	522.4	-5,247.6	5,273.3	0.00	0.00	0.00
12,500.0	90.15	270.00	6,778.2	-2,142.24	522.4	-5,347.6	5,372.9	0.00	0.00	0.00
12,600.0	90.15	270.00	6,778.0	-2,141.98	522.4	-5,447.6	5,472.5	0.00	0.00	0.00
12,700.0	90.15	270.00	6,777.7	-2,141.72	522.4	-5,547.6	5,572.1	0.00	0.00	0.00
12,800.0	90.15	270.00	6,777.5	-2,141.46	522.4	-5,647.6	5,671.7	0.00	0.00	0.00
12,900.0	90.15	270.00	6,777.2	-2,141.20	522.4	-5,747.6	5,771.3	0.00	0.00	0.00
BHL - CECIL'S KERSEY FARM 17K-334 (P2)										
12,974.5	90.15	270.00	6,777.0	-2,141.00	522.4	-5,822.1	5,845.5	0.00	0.00	0.00



Database:	EDM 5000.1 Single User Db	Local Co-ordinate Reference:	Well CECIL'S KERSEY FARM 17K-334
Company:	PDC ENERGY	TVD Reference:	KB-EST @ 4636.0usft (Original Well Elev)
Project:	WELD COUNTY, COLORADO	MD Reference:	KB-EST @ 4636.0usft (Original Well Elev)
Site:	NW SW SEC. 17 T5N R64W 6th P.M.	North Reference:	True
Well:	CECIL'S KERSEY FARM 17K-334	Survey Calculation Method:	Minimum Curvature
Wellbore:	ORIGINAL WELLBORE		
Design:	PROPOSAL #2		

Formations					
MD (usft)	TVD (usft)	Name	Lithology	Dip (°)	Dip Direction (°)
3,526.6	3,490.0	PARKMAN SANDSTONE			
4,252.5	4,200.0	SUSSEX SANDSTONE			
6,589.7	6,485.0	SHARON SPRINGS			
6,692.7	6,565.0	NIOBRARA A			
6,837.3	6,660.0	NIOBRARA B			
7,004.5	6,740.0	NIOBRARA C			

Plan Annotations				
MD (usft)	TVD (usft)	Local Coordinates		Comment
		+N/-S (usft)	+E/-W (usft)	
1,450.0	1,450.0	0.0	0.0	START NUDGE (2°/100ft BUR)
2,049.8	2,045.4	41.5	46.8	EOB TO 12° INC
5,237.4	5,163.4	480.9	542.6	END OF TANGENT
5,837.1	5,758.8	522.4	589.4	EOD TO VERTICAL
6,154.1	6,075.8	522.4	589.4	KOP (8°/100ft BUR)
7,281.1	6,792.0	522.4	-128.7	7" ICP *NEW* - CECIL'S KERSEY FARM 17K-334 (P2)
12,974.5	6,777.0	522.4	-5,822.1	BHL - CECIL'S KERSEY FARM 17K-334 (P2)