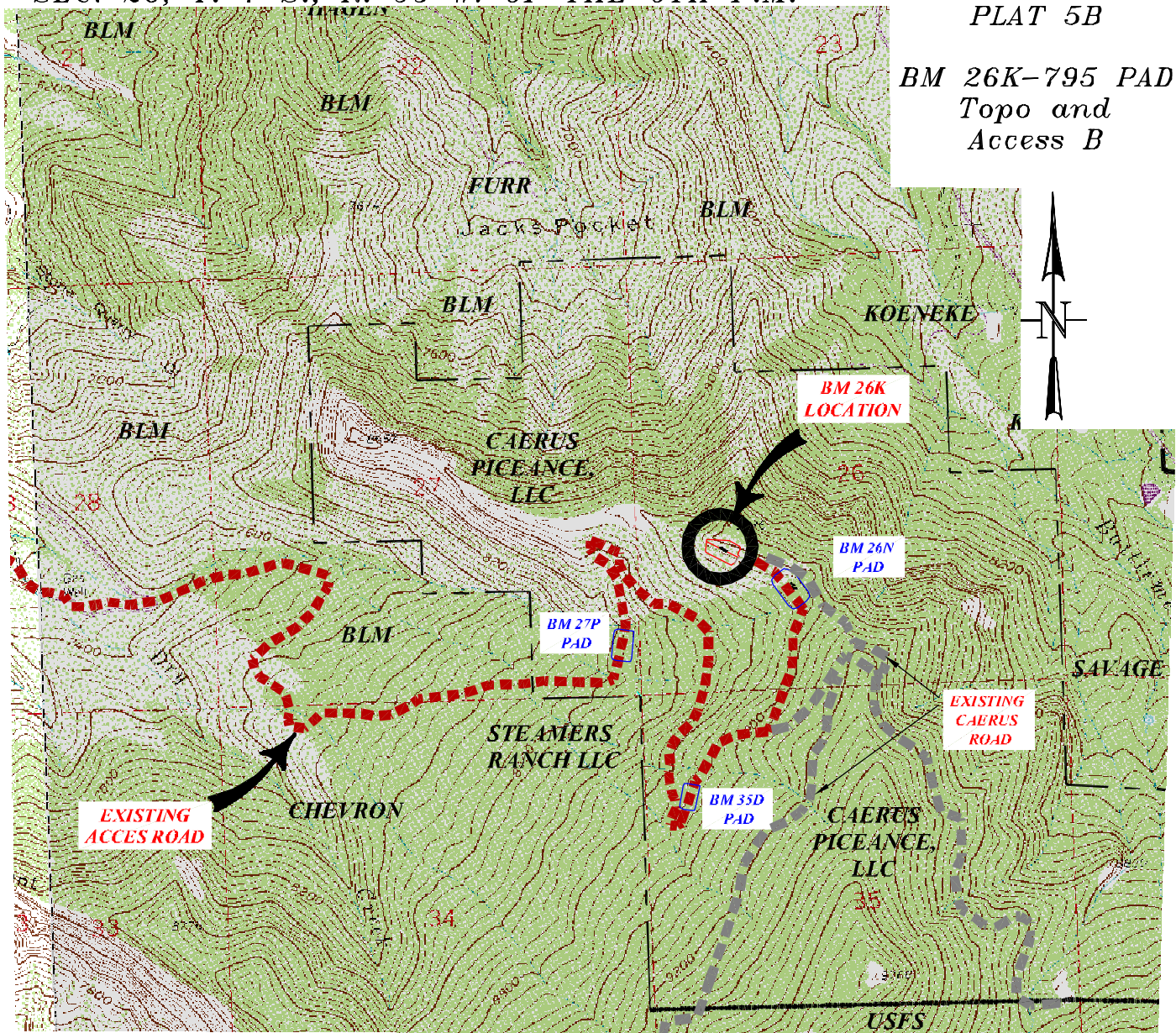


SEC. 26, T. 7 S., R. 95 W. OF THE 6TH P.M.

PLAT 5B

BM 26K-795 PAD
Topo and
Access B



ACCESS:

FROM THE UNA BRIDGE, PROCEED ALONG COUNTY ROAD 318 IN A GENERAL EAST/NORTHEAST DIRECTION ± 1.2 MILES TO THE KLEBOLD/THROM GATE. PROCEED IN A GENERAL EASTERLY/SOUTHEASTERLY DIRECTION ON A PRIVATE DIRT/GRAVEL ROAD ± 1.8 MILES TO THE APPROXIMATE BLM BOUNDARY, CONTINUE ON THE DIRT/GRAVEL ROAD THRU BLM IN A GENERAL NORTHERLY DIRECTION ± 0.1 MILES TO THE APPROXIMATE TOM BROWN, INC BOUNDARY, CONTINUE ON THE DIRT/GRAVEL ROAD THRU TOM BROWN, INC PROPERTY IN A GENERAL NORTHEASTERLY/NORTHWESTERLY DIRECTION ± 1.6 MILES TO AN INTERSECTION WITH A DIRT/GRAVEL ROAD ON THE RIGHT, PROCEED RIGHT IN A GENERAL EASTERLY DIRECTION THRU TOM BROWN, INC PROPERTY ± 0.6 MILES TO THE APPROXIMATE BLM BOUNDARY, CONTINUE ON THE DIRT/GRAVEL ROAD IN A GENERAL EASTERLY DIRECTION THRU BLM PROPERTY ± 3.1 MILES TO THE TOM BROWN, INC FEDERAL #28-95 WELL SITE, CONTINUE ALONG THE DIRT/GRAVEL ROAD IN A GENERAL EASTERLY DIRECTION ± 2.3 MILES TO A 'Y' INTERSECTION, PROCEED LEFT ALONG THE DIRT/GRAVEL ROAD IN A GENERAL EASTERLY DIRECTION ± 0.4 MILES TO A SWITCHBACK PROCEED UP THE ROADWAY ± 0.9 MILES TO THE EXISTING 35-D-795 PAD PROCEED THRU THE PAD LOCATION ± 0.3 MILES TO A DIRT ROAD INTERSECTION, THEN TURN LEFT AND PROCEED ± 0.3 MILES TO THE EXISTING PAD 26N-795, PROCEED THRU THE PAD SITE ± 0.2 MILES TO THE EXISTING 26K-795 LOCATION BEING THE POINT OF DESTINATION.

Battlement Mesa 26-K-795

NWSW, SECTION 26, T. 7 S., R. 95 W.

Caerus Piceance LLC



TOPO & ACCESS-B

CONSTRUCTION SURVEYS, INC.
0012 SUNRISE BLVD. SALT, CO
81652 (970)876-5753

SURVEY BY: REW 10/13/15

PDOP: 1.9

DRAWN BY: REW 11/07/15

DWG: CAERUS\BM26K-795

REVISED BY: TH 11/13/15 CAERUS PICEANCE LLC OWNERS