

KERR-MCGEE OIL & GAS ONSHORE LP (WA)

Location: COLORADO Slot: SLOT#20 SARCHET 36G-20HZ (416'FNL & 2397'FEL, SEC.20)
Field: WELD COUNTY (UTM/TRUE NORTH) Well: SARCHET 36G-20HZ
Facility: SEC.20-T2N-R65W Wellbore: SARCHET 36G-20HZ PWB

Plot reference wellpath is SARCHET 36G-20HZ (REV-A.0) PWP

True vertical depths are referenced to XTREME 24(16'KB) (RKB)

Grid System: NAD83 / UTM Zone 13 North, US feet

Measured depths are referenced to XTREME 24(16'KB) (RKB)

North Reference: True north

XTREME 24(16'KB) (RKB) to Mean Sea Level: 4930 feet

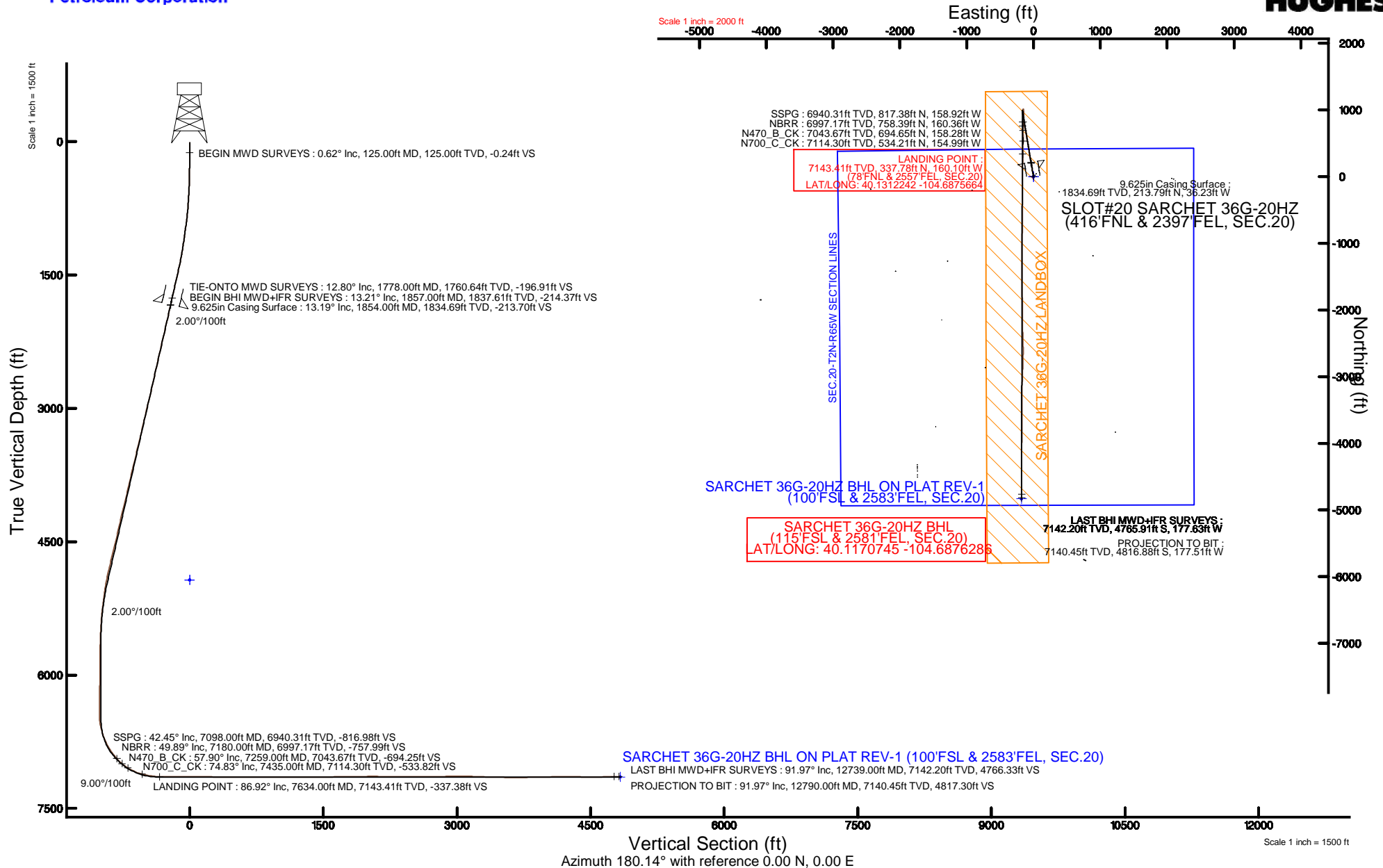
Scale: True distance

Mean Sea Level to Mud line (At Slot: SLOT#20 SARCHET 36G-20HZ (416'FNL & 2397'FEL, SEC.20)): 0 feet

Depths are in feet

Coordinates are in feet referenced to Slot

Created by: amarcar on 14/Oct/2015





Actual Wellpath Report

SARCHET 36G-20HZ AWP
Page 1 of 6



REFERENCE WELLPATH IDENTIFICATION

Operator	KERR-MCGEE OIL & GAS ONSHORE LP (WA)	Slot	SLOT#20 SARCHET 36G-20HZ (416'FNL & 2397'FEL, SEC.20)
Area	COLORADO	Well	SARCHET 36G-20HZ
Field	WELD COUNTY (UTM/TRUE NORTH)	Wellbore	SARCHET 36G-20HZ AWB <12790>
Facility	SEC.20-T2N-R65W		

REPORT SETUP INFORMATION

Projection System	NAD83 / UTM Zone 13 North, US feet	Software System	WellArchitect® 4.0.0
North Reference	True	User	Amarcar
Scale	0.999609	Report Generated	14/Oct/2015 at 12:31
Convergence at slot	0.20° East	Database/Source file	KERR MCGEE UTM/SARCHET_36G-20HZ_AWB__12790_.xml

WELLPATH LOCATION

	Local coordinates		Grid coordinates		Geographic coordinates	
	North[ft]	East[ft]	Easting[US ft]	Northing[US ft]	Latitude	Longitude
Slot Location	4444.15	1738.29	1727907.56	14574334.42	40°07'49.069"N	104°41'13.178"W
Facility Reference Pt			1726185.29	14569886.05	40°07'05.152"N	104°41'35.557"W
Field Reference Pt			1698235.31	14552047.82	40°04'09.600"N	104°47'36.000"W

WELLPATH DATUM

Calculation method	Minimum curvature	XTREME 24(16'KB) (RKB) to Facility Vertical Datum	4930.00ft
Horizontal Reference Pt	Slot	XTREME 24(16'KB) (RKB) to Mean Sea Level	4930.00ft
Vertical Reference Pt	XTREME 24(16'KB) (RKB)	XTREME 24(16'KB) (RKB) to Mud Line at Slot (SLOT#20 SARCHET 36G-20HZ (416'FNL & 2397'FEL, SEC.20))	4930.00ft
MD Reference Pt	XTREME 24(16'KB) (RKB)	Section Origin	N 0.00, E 0.00 ft
Field Vertical Reference	Mean Sea Level	Section Azimuth	180.14°

REFERENCE WELLPATH IDENTIFICATION			
Operator	KERR-MCGEE OIL & GAS ONSHORE LP (WA)	Slot	SLOT#20 SARCHET 36G-20HZ (416°FNL & 2397°FEL, SEC.20)
Area	COLORADO	Well	SARCHET 36G-20HZ
Field	WELD COUNTY (UTM/TRUE NORTH)	Wellbore	SARCHET 36G-20HZ AWB <12790>
Facility	SEC.20-T2N-R65W		

WELLPATH DATA (140 stations) † = interpolated/extrapolated station										
MD [ft]	Inclination [°]	Azimuth [°]	TVD [ft]	Vert Sect [ft]	North [ft]	East [ft]	Latitude	Longitude	DLS [°/100ft]	Comments
0.00†	0.000	294.500	0.00	0.00	0.00	0.00	40°07'49.069"N	104°41'13.178"W	0.00	
16.00	0.000	294.500	16.00	0.00	0.00	0.00	40°07'49.069"N	104°41'13.178"W	0.00	
125.00	0.620	294.500	125.00	-0.24	0.24	-0.54	40°07'49.071"N	104°41'13.185"W	0.57	BEGIN MWD SURVEYS
214.00	0.520	271.230	213.99	-0.45	0.45	-1.38	40°07'49.073"N	104°41'13.196"W	0.28	
304.00	0.740	303.560	303.99	-0.78	0.78	-2.27	40°07'49.077"N	104°41'13.207"W	0.46	
382.00	1.480	340.470	381.97	-2.00	2.01	-3.03	40°07'49.089"N	104°41'13.217"W	1.27	
472.00	2.090	353.680	471.93	-4.73	4.74	-3.60	40°07'49.116"N	104°41'13.224"W	0.81	
562.00	2.420	2.700	561.86	-8.26	8.27	-3.69	40°07'49.151"N	104°41'13.225"W	0.54	
652.00	3.830	359.750	651.72	-13.16	13.17	-3.61	40°07'49.199"N	104°41'13.224"W	1.58	
743.00	4.370	351.520	742.49	-19.63	19.64	-4.14	40°07'49.263"N	104°41'13.231"W	0.88	
836.00	6.200	354.040	835.09	-28.13	28.14	-5.18	40°07'49.347"N	104°41'13.245"W	1.98	
923.00	7.760	350.020	921.45	-38.58	38.60	-6.69	40°07'49.450"N	104°41'13.264"W	1.88	
1013.00	8.120	347.140	1010.58	-50.75	50.78	-9.15	40°07'49.571"N	104°41'13.296"W	0.60	
1103.00	8.210	349.960	1099.67	-63.27	63.30	-11.69	40°07'49.695"N	104°41'13.328"W	0.46	
1193.00	8.970	347.220	1188.66	-76.44	76.47	-14.36	40°07'49.825"N	104°41'13.363"W	0.96	
1283.00	10.680	347.220	1277.34	-91.40	91.45	-17.76	40°07'49.973"N	104°41'13.407"W	1.90	
1418.00	12.170	356.850	1409.67	-117.81	117.86	-21.31	40°07'50.234"N	104°41'13.452"W	1.79	
1508.00	12.780	354.810	1497.55	-137.19	137.25	-22.73	40°07'50.425"N	104°41'13.471"W	0.84	
1598.00	13.110	351.710	1585.26	-157.20	157.26	-25.10	40°07'50.623"N	104°41'13.501"W	0.85	
1688.00	13.080	347.200	1672.92	-177.22	177.29	-28.83	40°07'50.821"N	104°41'13.549"W	1.14	
1778.00	12.800	348.480	1760.64	-196.91	196.99	-33.08	40°07'51.016"N	104°41'13.604"W	0.45	TIE-ONTO MWD SURVEYS
1857.00	13.210	350.310	1837.61	-214.37	214.47	-36.34	40°07'51.188"N	104°41'13.646"W	0.74	BEGIN BHI MWD+IFR SURVEYS
1953.00	12.390	347.830	1931.23	-235.25	235.35	-40.36	40°07'51.395"N	104°41'13.698"W	1.03	
2048.00	13.400	345.340	2023.83	-255.85	255.96	-45.30	40°07'51.598"N	104°41'13.761"W	1.21	
2142.00	13.350	350.240	2115.28	-277.07	277.19	-49.89	40°07'51.808"N	104°41'13.820"W	1.21	
2237.00	12.950	348.850	2207.79	-298.31	298.45	-53.81	40°07'52.018"N	104°41'13.871"W	0.54	
2332.00	13.190	352.880	2300.33	-319.50	319.64	-57.21	40°07'52.228"N	104°41'13.915"W	0.99	
2427.00	12.420	352.450	2392.97	-340.38	340.53	-59.90	40°07'52.434"N	104°41'13.949"W	0.82	
2521.00	13.300	352.170	2484.61	-361.10	361.26	-62.70	40°07'52.639"N	104°41'13.985"W	0.94	
2616.00	12.290	352.790	2577.25	-381.95	382.12	-65.46	40°07'52.845"N	104°41'14.021"W	1.07	
2711.00	12.840	353.770	2669.97	-402.47	402.64	-67.87	40°07'53.048"N	104°41'14.052"W	0.62	
2805.00	12.970	349.750	2761.60	-423.23	423.41	-70.88	40°07'53.253"N	104°41'14.091"W	0.96	
2900.00	13.370	346.630	2854.10	-444.40	444.58	-75.32	40°07'53.462"N	104°41'14.148"W	0.86	
2995.00	14.240	352.070	2946.36	-466.65	466.84	-79.47	40°07'53.682"N	104°41'14.201"W	1.64	
3089.00	13.360	350.010	3037.65	-488.78	488.99	-82.95	40°07'53.901"N	104°41'14.246"W	1.07	
3184.00	13.220	351.530	3130.11	-510.33	510.54	-86.45	40°07'54.114"N	104°41'14.291"W	0.40	
3278.00	13.160	348.090	3221.63	-531.42	531.65	-90.25	40°07'54.323"N	104°41'14.340"W	0.84	
3373.00	13.220	350.230	3314.12	-552.70	552.93	-94.32	40°07'54.533"N	104°41'14.392"W	0.52	
3468.00	14.050	348.690	3406.44	-574.70	574.95	-98.43	40°07'54.751"N	104°41'14.445"W	0.95	
3563.00	13.340	348.500	3498.74	-596.74	596.99	-102.87	40°07'54.969"N	104°41'14.502"W	0.75	
3658.00	12.890	351.220	3591.26	-617.94	618.21	-106.68	40°07'55.178"N	104°41'14.551"W	0.80	
3752.00	14.100	351.350	3682.67	-639.61	639.89	-110.00	40°07'55.392"N	104°41'14.594"W	1.29	
3847.00	13.500	351.030	3774.93	-662.00	662.28	-113.47	40°07'55.614"N	104°41'14.639"W	0.64	
3941.00	13.490	343.170	3866.34	-683.32	683.62	-118.35	40°07'55.825"N	104°41'14.702"W	1.95	
4036.00	13.240	344.550	3958.77	-704.40	704.71	-124.46	40°07'56.033"N	104°41'14.780"W	0.43	



Actual Wellpath Report

SARCHET 36G-20HZ AWP
Page 3 of 6



REFERENCE WELLPATH IDENTIFICATION

Operator	KERR-MCGEE OIL & GAS ONSHORE LP (WA)	Slot	SLOT#20 SARCHET 36G-20HZ (416°FNL & 2397°FEL, SEC.20)
Area	COLORADO	Well	SARCHET 36G-20HZ
Field	WELD COUNTY (UTM/TRUE NORTH)	Wellbore	SARCHET 36G-20HZ AWB <12790>
Facility	SEC.20-T2N-R65W		

WELLPATH DATA (140 stations) † = interpolated/extrapolated station

MD [ft]	Inclination [°]	Azimuth [°]	TVD [ft]	Vert Sect [ft]	North [ft]	East [ft]	Latitude	Longitude	DLS [°/100ft]	Comments
4131.00	13.530	347.440	4051.19	-725.72	726.04	-129.77	40°07'56.244"N	104°41'14.849"W	0.77	
4226.00	14.610	351.860	4143.34	-748.41	748.75	-133.89	40°07'56.468"N	104°41'14.902"W	1.60	
4320.00	13.680	349.870	4234.49	-771.08	771.43	-137.52	40°07'56.692"N	104°41'14.949"W	1.12	
4415.00	12.510	348.380	4327.01	-792.21	792.57	-141.57	40°07'56.901"N	104°41'15.001"W	1.28	
4510.00	12.580	357.110	4419.75	-812.62	812.98	-144.16	40°07'57.103"N	104°41'15.034"W	2.00	
4604.00	13.450	358.500	4511.34	-833.77	834.13	-144.97	40°07'57.312"N	104°41'15.044"W	0.98	
4699.00	13.560	2.760	4603.72	-855.94	856.30	-144.72	40°07'57.531"N	104°41'15.041"W	1.05	
4793.00	14.510	358.680	4694.91	-878.72	879.08	-144.46	40°07'57.756"N	104°41'15.038"W	1.46	
4888.00	13.350	358.160	4787.11	-901.58	901.94	-145.09	40°07'57.982"N	104°41'15.046"W	1.23	
4982.00	11.500	358.650	4878.91	-921.79	922.16	-145.66	40°07'58.182"N	104°41'15.053"W	1.97	
5077.00	10.230	0.310	4972.20	-939.70	940.06	-145.83	40°07'58.359"N	104°41'15.056"W	1.38	
5172.00	8.500	353.930	5065.94	-955.11	955.48	-146.53	40°07'58.511"N	104°41'15.065"W	2.12	
5266.00	7.380	353.870	5159.03	-968.02	968.39	-147.91	40°07'58.639"N	104°41'15.082"W	1.19	
5361.00	6.390	337.760	5253.36	-978.98	979.35	-150.56	40°07'58.747"N	104°41'15.116"W	2.27	
5456.00	5.030	338.180	5347.88	-987.73	988.11	-154.11	40°07'58.834"N	104°41'15.162"W	1.43	
5550.00	3.950	336.650	5441.59	-994.52	994.91	-156.93	40°07'58.901"N	104°41'15.198"W	1.16	
5645.00	2.900	338.390	5536.42	-999.75	1000.15	-159.11	40°07'58.953"N	104°41'15.226"W	1.11	
5740.00	1.820	351.620	5631.34	-1003.48	1003.88	-160.21	40°07'58.989"N	104°41'15.241"W	1.27	
5835.00	1.360	14.530	5726.31	-1006.06	1006.46	-160.15	40°07'59.015"N	104°41'15.240"W	0.82	
5929.00	1.330	48.190	5820.28	-1007.87	1008.27	-159.06	40°07'59.033"N	104°41'15.226"W	0.83	
6024.00	2.110	84.710	5915.24	-1008.77	1009.16	-156.49	40°07'59.042"N	104°41'15.193"W	1.38	
6119.00	0.860	91.840	6010.21	-1008.92	1009.30	-154.04	40°07'59.043"N	104°41'15.161"W	1.33	
6403.00	0.950	349.300	6294.19	-1011.17	1011.55	-152.35	40°07'59.065"N	104°41'15.139"W	0.50	
6498.00	0.940	335.310	6389.17	-1012.65	1013.03	-152.82	40°07'59.080"N	104°41'15.145"W	0.24	
6592.00	2.520	182.310	6483.15	-1011.28	1011.66	-153.22	40°07'59.066"N	104°41'15.151"W	3.60	
6687.00	12.100	177.270	6577.27	-999.22	999.60	-152.83	40°07'58.947"N	104°41'15.146"W	10.10	
6782.00	18.480	179.250	6668.86	-974.20	974.58	-152.16	40°07'58.700"N	104°41'15.137"W	6.74	
6877.00	25.580	180.180	6756.87	-938.59	938.97	-152.03	40°07'58.348"N	104°41'15.135"W	7.48	
6971.00	31.990	183.960	6839.21	-893.40	893.78	-153.81	40°07'57.901"N	104°41'15.158"W	7.09	
7065.00	39.580	184.020	6915.41	-838.60	838.99	-157.64	40°07'57.360"N	104°41'15.208"W	8.07	
7098.00†	42.449	182.795	6940.31	-816.98	817.38	-158.92	40°07'57.146"N	104°41'15.224"W	9.03	SSPG
7160.00	47.870	180.820	6984.01	-773.05	773.45	-160.27	40°07'56.712"N	104°41'15.241"W	9.03	
7180.00†	49.891	179.864	6997.17	-757.99	758.39	-160.36	40°07'56.563"N	104°41'15.243"W	10.73	NBRR
7255.00	57.530	176.720	7041.53	-697.63	698.02	-158.47	40°07'55.967"N	104°41'15.218"W	10.73	
7259.00†	57.904	176.813	7043.67	-694.25	694.65	-158.28	40°07'55.934"N	104°41'15.216"W	9.55	N470_B_CK
7350.00	66.420	178.750	7086.13	-613.93	614.32	-155.23	40°07'55.140"N	104°41'15.176"W	9.55	
7435.00†	74.829	180.864	7114.30	-533.82	534.21	-154.99	40°07'54.348"N	104°41'15.173"W	10.17	N700_C_CK
7445.00	75.820	181.100	7116.84	-524.15	524.53	-155.16	40°07'54.253"N	104°41'15.176"W	10.17	
7539.00	82.410	181.770	7134.58	-431.92	432.31	-157.48	40°07'53.341"N	104°41'15.205"W	7.05	
7634.00	86.920	181.410	7143.41	-337.38	337.78	-160.10	40°07'52.407"N	104°41'15.239"W	4.76	LANDING POINT
7729.00	91.020	180.570	7145.12	-242.43	242.83	-161.74	40°07'51.469"N	104°41'15.260"W	4.41	
7823.00	91.760	180.850	7142.84	-148.46	148.87	-162.90	40°07'50.540"N	104°41'15.275"W	0.84	
7918.00	89.570	180.320	7141.73	-53.48	53.88	-163.87	40°07'49.601"N	104°41'15.288"W	2.37	
8013.00	89.170	179.680	7142.78	41.52	-41.11	-163.87	40°07'48.663"N	104°41'15.288"W	0.79	
8107.00	89.690	179.330	7143.71	135.51	-135.10	-163.06	40°07'47.734"N	104°41'15.277"W	0.67	

REFERENCE WELLPATH IDENTIFICATION			
Operator	KERR-MCGEE OIL & GAS ONSHORE LP (WA)	Slot	SLOT#20 SARCHET 36G-20HZ (416°FNL & 2397°FEL, SEC.20)
Area	COLORADO	Well	SARCHET 36G-20HZ
Field	WELD COUNTY (UTM/TRUE NORTH)	Wellbore	SARCHET 36G-20HZ AWP <12790>
Facility	SEC.20-T2N-R65W		

WELLPATH DATA (140 stations)										
MD [ft]	Inclination [°]	Azimuth [°]	TVD [ft]	Vert Sect [ft]	North [ft]	East [ft]	Latitude	Longitude	DLS [°/100ft]	Comments
8202.00	88.890	180.440	7144.89	230.50	-230.09	-162.87	40°07'46.795"N	104°41'15.275"W	1.44	
8297.00	88.610	179.630	7146.96	325.47	-325.07	-162.93	40°07'45.857"N	104°41'15.276"W	0.90	
8392.00	90.190	180.780	7147.96	420.46	-420.06	-163.27	40°07'44.918"N	104°41'15.280"W	2.06	
8486.00	89.940	180.570	7147.85	514.46	-514.05	-164.38	40°07'43.989"N	104°41'15.294"W	0.35	
8581.00	90.280	179.930	7147.67	609.46	-609.05	-164.79	40°07'43.050"N	104°41'15.299"W	0.76	
8676.00	89.540	181.430	7147.82	704.45	-704.04	-165.92	40°07'42.112"N	104°41'15.314"W	1.76	
8771.00	89.690	181.080	7148.46	799.43	-799.01	-168.00	40°07'41.173"N	104°41'15.341"W	0.40	
8866.00	89.690	181.000	7148.97	894.42	-894.00	-169.72	40°07'40.234"N	104°41'15.363"W	0.08	
8961.00	90.280	181.010	7148.99	989.40	-988.98	-171.39	40°07'39.296"N	104°41'15.384"W	0.62	
9055.00	91.600	181.650	7147.45	1083.37	-1082.94	-173.57	40°07'38.367"N	104°41'15.412"W	1.56	
9150.00	90.180	179.240	7145.98	1178.35	-1177.92	-174.31	40°07'37.429"N	104°41'15.422"W	2.94	
9245.00	88.800	179.190	7146.82	1273.33	-1272.90	-173.01	40°07'36.490"N	104°41'15.405"W	1.45	
9340.00	89.540	179.230	7148.20	1368.30	-1367.88	-171.70	40°07'35.551"N	104°41'15.388"W	0.78	
9434.00	90.680	180.450	7148.02	1462.30	-1461.88	-171.43	40°07'34.623"N	104°41'15.385"W	1.78	
9529.00	90.890	179.400	7146.72	1557.29	-1556.87	-171.31	40°07'33.684"N	104°41'15.383"W	1.13	
9624.00	92.030	179.480	7144.30	1652.25	-1651.83	-170.38	40°07'32.745"N	104°41'15.371"W	1.20	
9718.00	90.990	179.490	7141.82	1746.21	-1745.79	-169.54	40°07'31.817"N	104°41'15.360"W	1.11	
9813.00	89.850	179.590	7141.12	1841.20	-1840.79	-168.77	40°07'30.878"N	104°41'15.351"W	1.20	
9908.00	90.460	178.660	7140.87	1936.18	-1935.77	-167.32	40°07'29.939"N	104°41'15.332"W	1.17	
10003.00	90.460	179.850	7140.10	2031.17	-2030.76	-166.09	40°07'29.001"N	104°41'15.316"W	1.25	
10097.00	88.860	179.840	7140.66	2125.16	-2124.76	-165.83	40°07'28.072"N	104°41'15.313"W	1.70	
10192.00	89.110	178.980	7142.34	2220.14	-2219.74	-164.86	40°07'27.133"N	104°41'15.300"W	0.94	
10286.00	90.030	178.410	7143.05	2314.10	-2313.71	-162.72	40°07'26.205"N	104°41'15.273"W	1.15	
10381.00	90.620	177.990	7142.51	2409.05	-2408.66	-159.73	40°07'25.266"N	104°41'15.234"W	0.76	
10475.00	90.400	178.500	7141.67	2502.99	-2502.61	-156.85	40°07'24.338"N	104°41'15.197"W	0.59	
10570.00	89.260	179.090	7141.95	2597.96	-2597.59	-154.85	40°07'23.399"N	104°41'15.171"W	1.35	
10665.00	90.000	182.410	7142.57	2692.94	-2692.56	-156.10	40°07'22.461"N	104°41'15.187"W	3.58	
10759.00	90.830	181.630	7141.89	2786.89	-2786.50	-159.41	40°07'21.533"N	104°41'15.230"W	1.21	
10854.00	91.360	181.440	7140.07	2881.84	-2881.45	-161.96	40°07'20.594"N	104°41'15.263"W	0.59	
10949.00	89.940	182.650	7138.99	2976.78	-2976.38	-165.35	40°07'19.656"N	104°41'15.306"W	1.96	
11044.00	90.250	181.570	7138.84	3071.72	-3071.31	-168.84	40°07'18.718"N	104°41'15.351"W	1.18	
11138.00	88.150	180.230	7140.15	3165.70	-3165.28	-170.32	40°07'17.789"N	104°41'15.370"W	2.65	
11233.00	87.630	180.970	7143.65	3260.63	-3260.21	-171.31	40°07'16.851"N	104°41'15.383"W	0.95	
11328.00	88.490	180.510	7146.86	3355.57	-3355.15	-172.54	40°07'15.913"N	104°41'15.399"W	1.03	
11422.00	88.890	180.200	7149.01	3449.54	-3449.12	-173.12	40°07'14.984"N	104°41'15.406"W	0.54	
11517.00	89.080	180.060	7150.69	3544.53	-3544.11	-173.34	40°07'14.046"N	104°41'15.409"W	0.25	
11612.00	89.540	179.780	7151.84	3639.52	-3639.10	-173.20	40°07'13.107"N	104°41'15.408"W	0.57	
11706.00	90.800	180.030	7151.56	3733.51	-3733.10	-173.05	40°07'12.178"N	104°41'15.406"W	1.37	
11801.00	91.480	179.880	7149.67	3828.50	-3828.08	-172.97	40°07'11.240"N	104°41'15.405"W	0.73	
11896.00	90.520	181.280	7148.01	3923.47	-3923.06	-173.94	40°07'10.301"N	104°41'15.417"W	1.79	
11990.00	91.510	181.600	7146.35	4017.43	-4017.01	-176.30	40°07'09.372"N	104°41'15.447"W	1.11	
12085.00	90.400	180.800	7144.76	4112.40	-4111.97	-178.29	40°07'08.434"N	104°41'15.473"W	1.44	
12180.00	89.540	180.010	7144.81	4207.40	-4206.97	-178.96	40°07'07.495"N	104°41'15.482"W	1.23	
12275.00	90.180	179.480	7145.05	4302.40	-4301.97	-178.54	40°07'06.556"N	104°41'15.476"W	0.87	
12369.00	89.230	179.780	7145.53	4396.39	-4395.96	-177.93	40°07'05.628"N	104°41'15.468"W	1.06	

REFERENCE WELLPATH IDENTIFICATION

Operator	KERR-MCGEE OIL & GAS ONSHORE LP (WA)	Slot	SLOT#20 SARCHET 36G-20HZ (416°FNL & 2397°FEL, SEC.20)
Area	COLORADO	Well	SARCHET 36G-20HZ
Field	WELD COUNTY (UTM/TRUE NORTH)	Wellbore	SARCHET 36G-20HZ AWB <12790>
Facility	SEC.20-T2N-R65W		

WELLPATH DATA (140 stations)

MD [ft]	Inclination [°]	Azimuth [°]	TVD [ft]	Vert Sect [ft]	North [ft]	East [ft]	Latitude	Longitude	DLS [°/100ft]	Comments
12464.00	89.910	179.500	7146.24	4491.38	-4490.96	-177.33	40°07'04.689"N	104°41'15.461"W	0.77	
12559.00	90.370	180.390	7146.01	4586.38	-4585.96	-177.24	40°07'03.750"N	104°41'15.459"W	1.05	
12654.00	91.300	180.110	7144.63	4681.37	-4680.94	-177.66	40°07'02.811"N	104°41'15.465"W	1.02	
12739.00	91.970	179.860	7142.20	4766.33	-4765.91	-177.63	40°07'01.972"N	104°41'15.464"W	0.84	LAST BHI MWD+IFR SURVEYS
12790.00	91.970	179.860	7140.45	4817.30	-4816.88	-177.51	40°07'01.468"N	104°41'15.463"W	0.00	PROJECTION TO BIT

HOLE & CASING SECTIONS - Ref Wellbore: SARCHET 36G-20HZ AWB <12790> Ref Wellpath: SARCHET 36G-20HZ AWP

String/Diameter	Start MD [ft]	End MD [ft]	Interval [ft]	Start TVD [ft]	End TVD [ft]	Start N/S [ft]	Start E/W [ft]	End N/S [ft]	End E/W [ft]
13.5in Open Hole	16.00	1864.00	1848.00	16.00	1844.43	0.00	0.00	216.04	-36.62
9.625in Casing Surface	16.00	1854.00	1838.00	16.00	1834.69	0.00	0.00	213.79	-36.23
7.875in Open Hole	1864.00	12790.00	10926.00	1844.43	7140.45	216.04	-36.62	-4816.88	-177.51

TARGETS

Name	TVD [ft]	North [ft]	East [ft]	Grid East [US ft]	Grid North [US ft]	Latitude	Longitude	Shape
SARCHET 36G-20HZ LANDBOX	4930.00	0.02	-0.03	1727907.53	14574334.44	40°07'49.069"N	104°41'13.178"W	polygon
SEC.20-T2N-R65W SECTION LINES	4930.00	0.02	-0.03	1727907.53	14574334.44	40°07'49.069"N	104°41'13.178"W	polygon
SARCHET 36G-20HZ BHL ON PLAT REV-1 (100°FSL & 2583°FEL, SEC.20)	7146.00	-4831.96	-179.86	1727744.79	14569503.76	40°07'01.319"N	104°41'15.493"W	point

WELLPATH COMPOSITION - Ref Wellbore: SARCHET 36G-20HZ AWB <12790> Ref Wellpath: SARCHET 36G-20HZ AWP

Start MD [ft]	End MD [ft]	Positional Uncertainty Model	Log Name/Comment	Wellbore
16.00	1778.00	Custom APC_ISCWSA REV 2 MWD	SDI MWD SURVEYS 13.5" <125-1778>	SARCHET 36G-20HZ AWB <12790>
1778.00	12739.00	Custom APC_ISCWSA REV 2 MWD+IFR1+SC (approximation)	BHI MWD+IFR SURVEYS 7.875" <1857-12739>	SARCHET 36G-20HZ AWB <12790>
12739.00	12790.00	Blind Drilling (std)	Projection to bit	SARCHET 36G-20HZ AWB <12790>



Actual Wellpath Report

SARCHET 36G-20HZ AWP
Page 6 of 6



REFERENCE WELLPATH IDENTIFICATION

Operator	KERR-MCGEE OIL & GAS ONSHORE LP (WA)	Slot	SLOT#20 SARCHET 36G-20HZ (416'FNL & 2397'FEL, SEC.20)
Area	COLORADO	Well	SARCHET 36G-20HZ
Field	WELD COUNTY (UTM/TRUE NORTH)	Wellbore	SARCHET 36G-20HZ AWB <12790>
Facility	SEC.20-T2N-R65W		

WELLPATH COMMENTS

MD [ft]	Inclination [°]	Azimuth [°]	TVD [ft]	Comment
125.00	0.620	294.500	125.00	BEGIN MWD SURVEYS
1778.00	12.800	348.480	1760.64	TIE-ONTO MWD SURVEYS
1857.00	13.210	350.310	1837.61	BEGIN BHI MWD+IFR SURVEYS
7098.00	42.449	182.795	6940.31	SSPG
7180.00	49.891	179.864	6997.17	NBRR
7259.00	57.904	176.813	7043.67	N470_B_CK
7435.00	74.829	180.864	7114.30	N700_C_CK
7634.00	86.920	181.410	7143.41	LANDING POINT
12739.00	91.970	179.860	7142.20	LAST BHI MWD+IFR SURVEYS
12790.00	91.970	179.860	7140.45	PROJECTION TO BIT