

1/30/2006

N

Shane Davis
Weld County
North of Keenesburg, CO
~5 miles

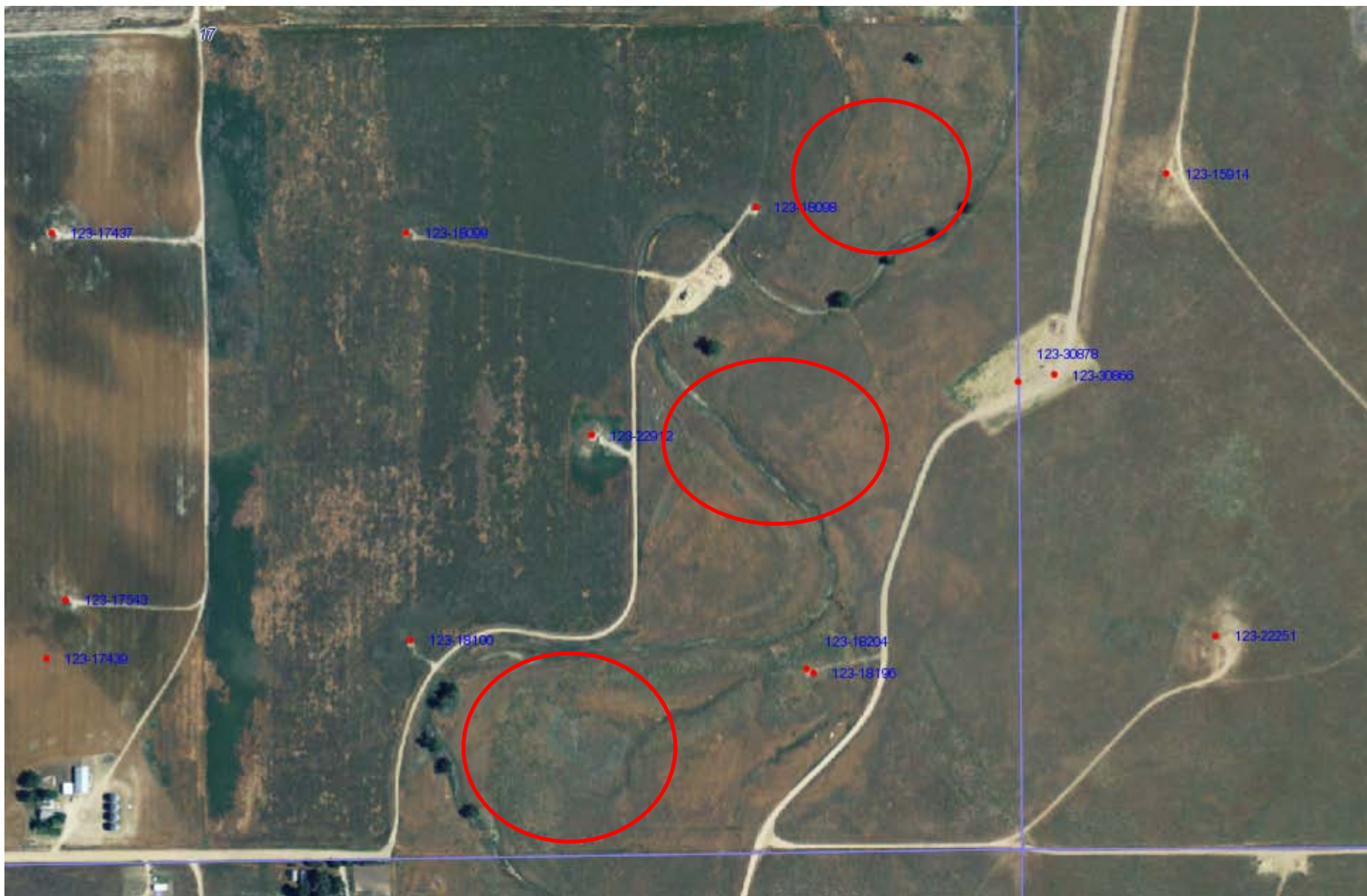
Image © 2012 DigitalGlobe
© 2012 Google

9151 ft

imagery Date: 4/30/2006 1999

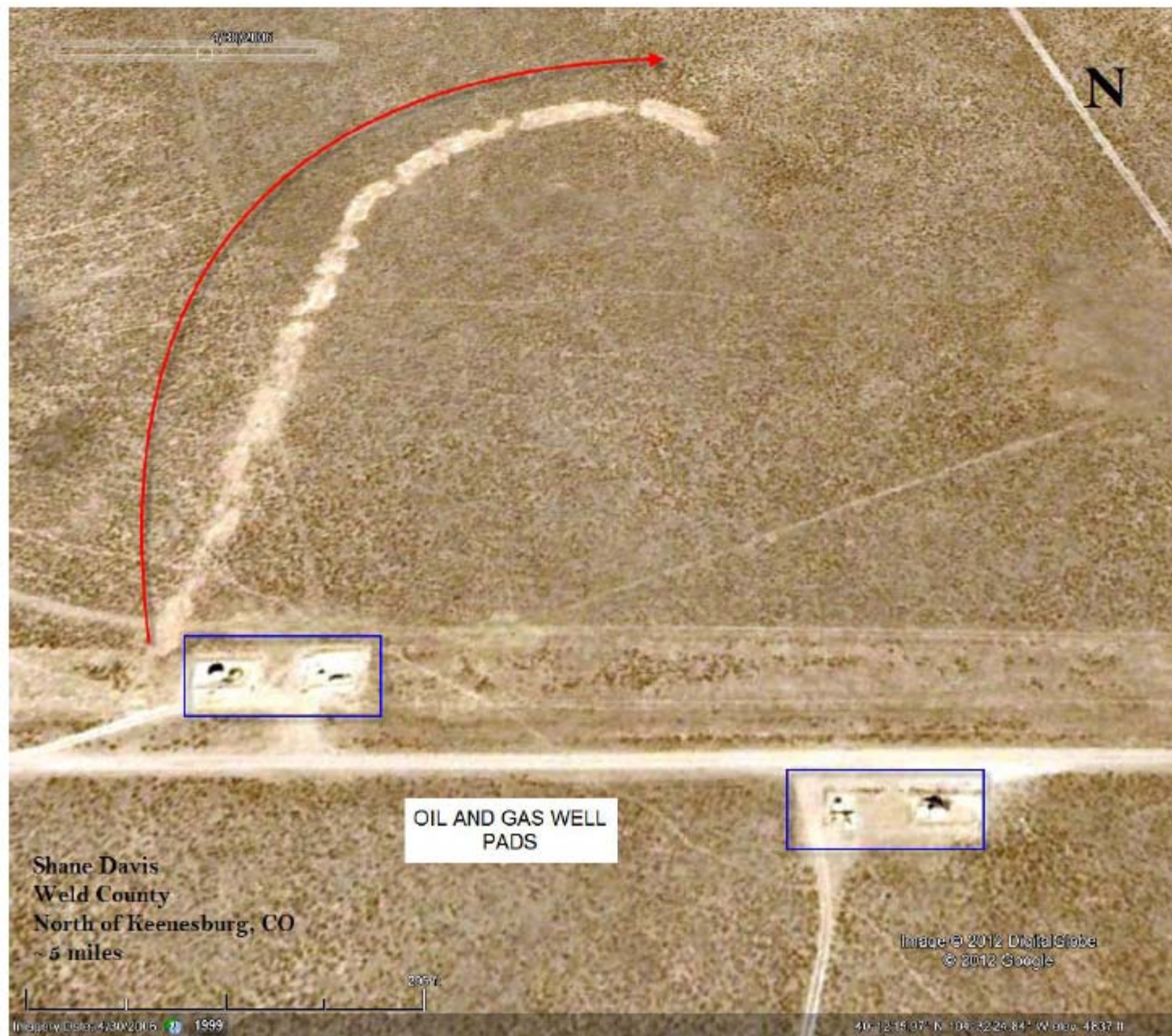
40°14'07.74" N 104°33'56.41" W elev. 4743 ft





Date: 2011

Location :17-3N-64W



4/23/2012

N

OIL AND GAS WELL
PADS

Shane Davis
Weld County
North of Keenesburg, CO
~ 5 miles

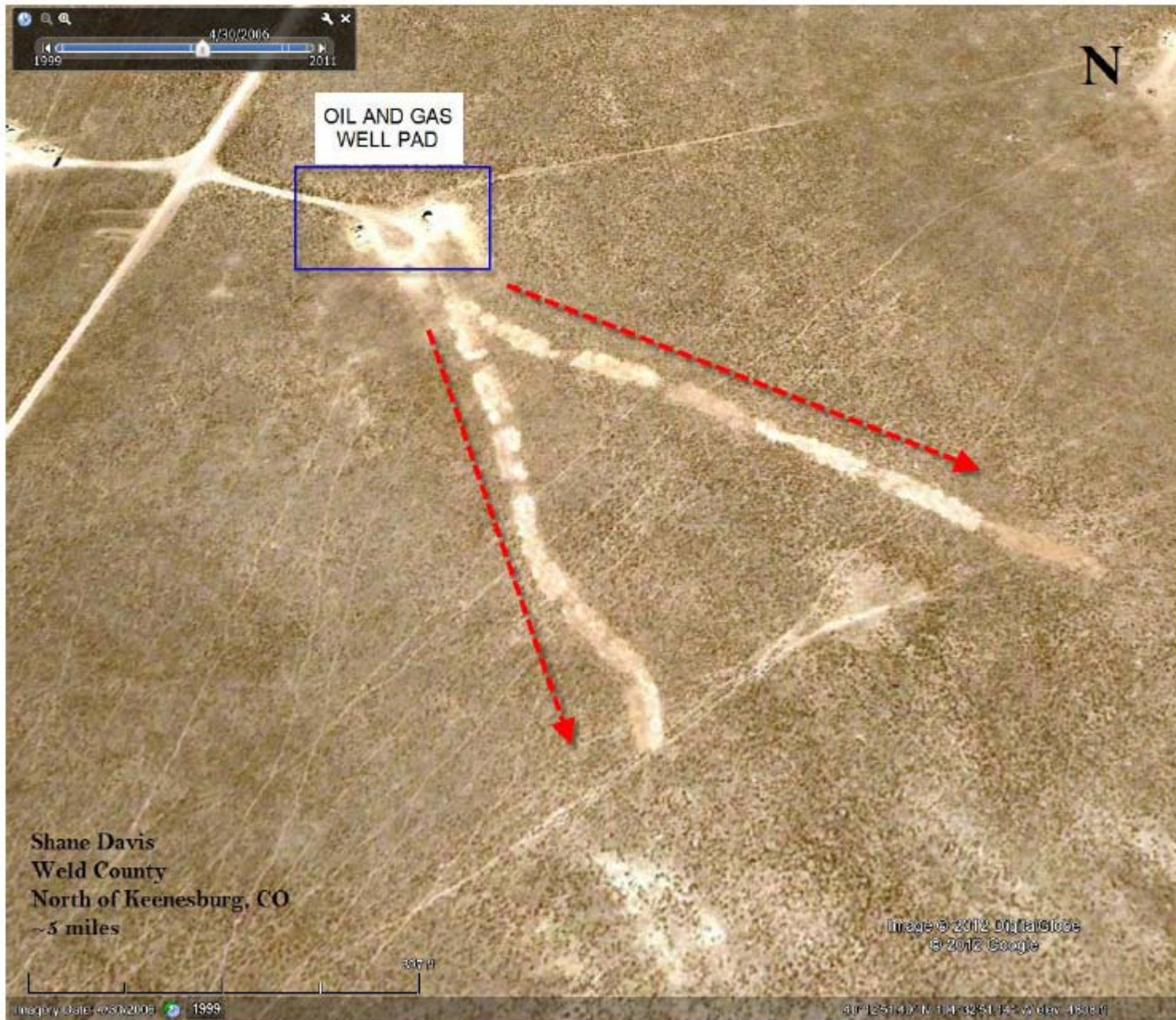
Image © 2012 DigitalGlobe
© 2012 Google

Imagery Date: 4/30/2015 1999

40°12'15.07" N 104°32'24.84" W elev. 4837 ft



Date: 2011 Location: 22&27 – 3N-64W





Date: 2011 Location: Section 22 3N-64W

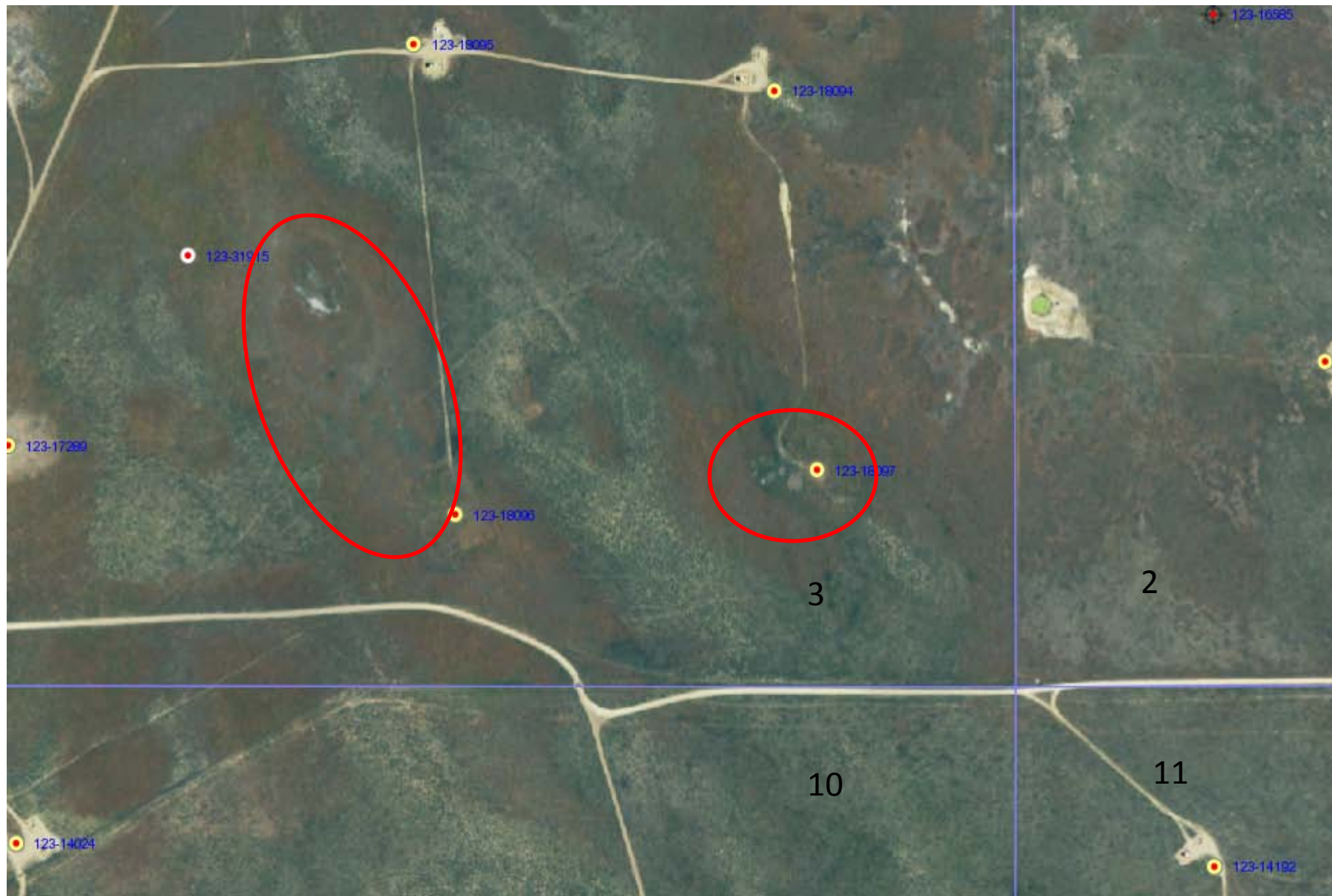
reclamation.





Date: 2011 Location: NW 16 3N64W





Date: 2011 Location: 3 3N-64W

4/30/2006

N

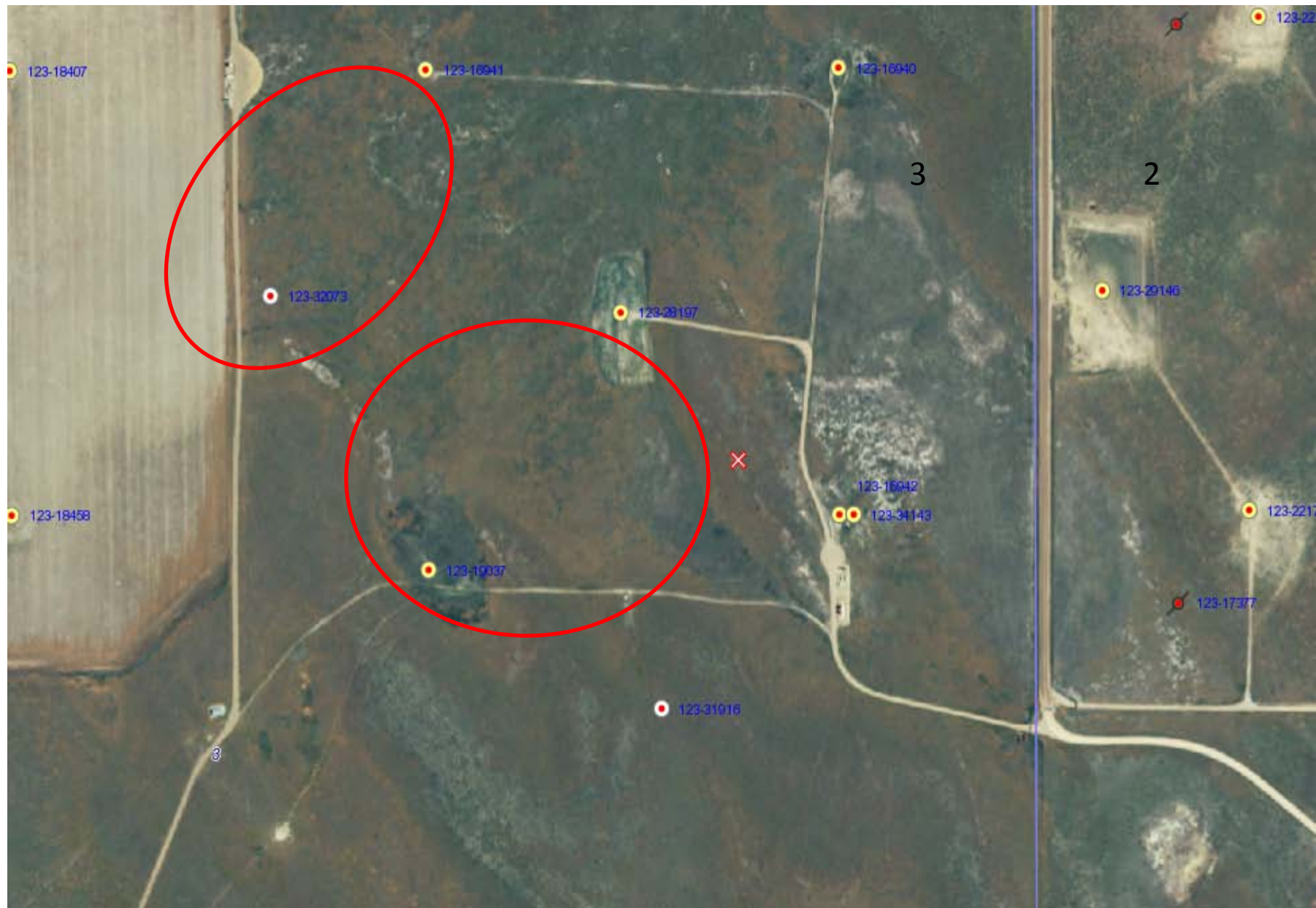
Shane Davis
Weld County
North of Keenesburg, CO
~ 5 miles

Image © 2012 DigitalGlobe
© 2012 Google

440 ft

Imagery Date: 4/30/2006 1999

40°15'24.37" N 104°31'52.40" W elev 4708 ft



Date: 2011

Location: 3 3N-64W

4/30/2006

N

Ruler

Line Path

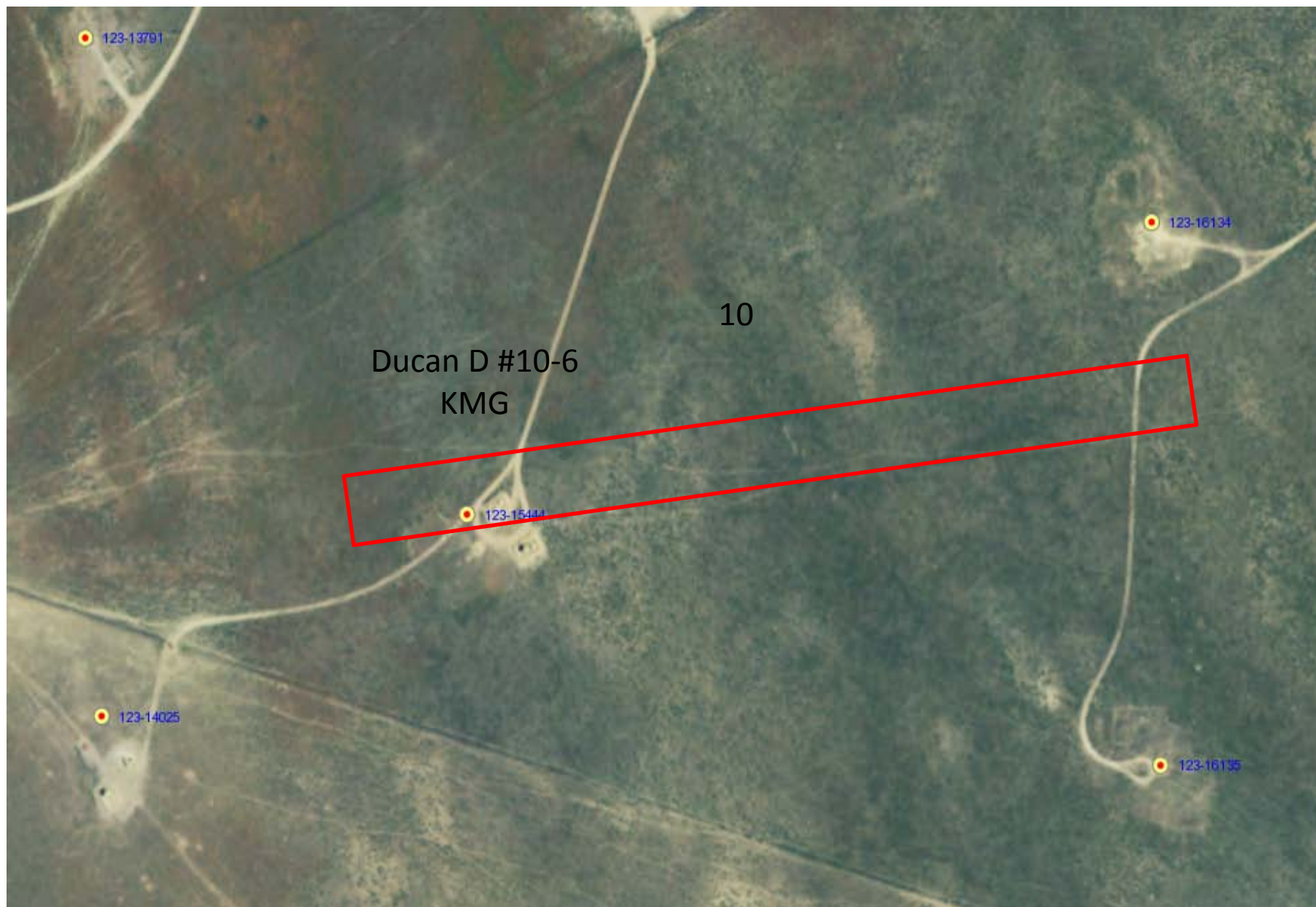
Measure the distance between two points on the ground

Map Length:	1,663.85	Feet
Ground Length:	1,664.23	
Heading:	262.92 degrees	

☒ Mouse Navigation

Shane Davis
Weld County
North of Keenesburg, CO
~5 miles

Image © 2012 DigitalGlobe
© 2012 Google



Date: 2011 Location:10 3N-64W

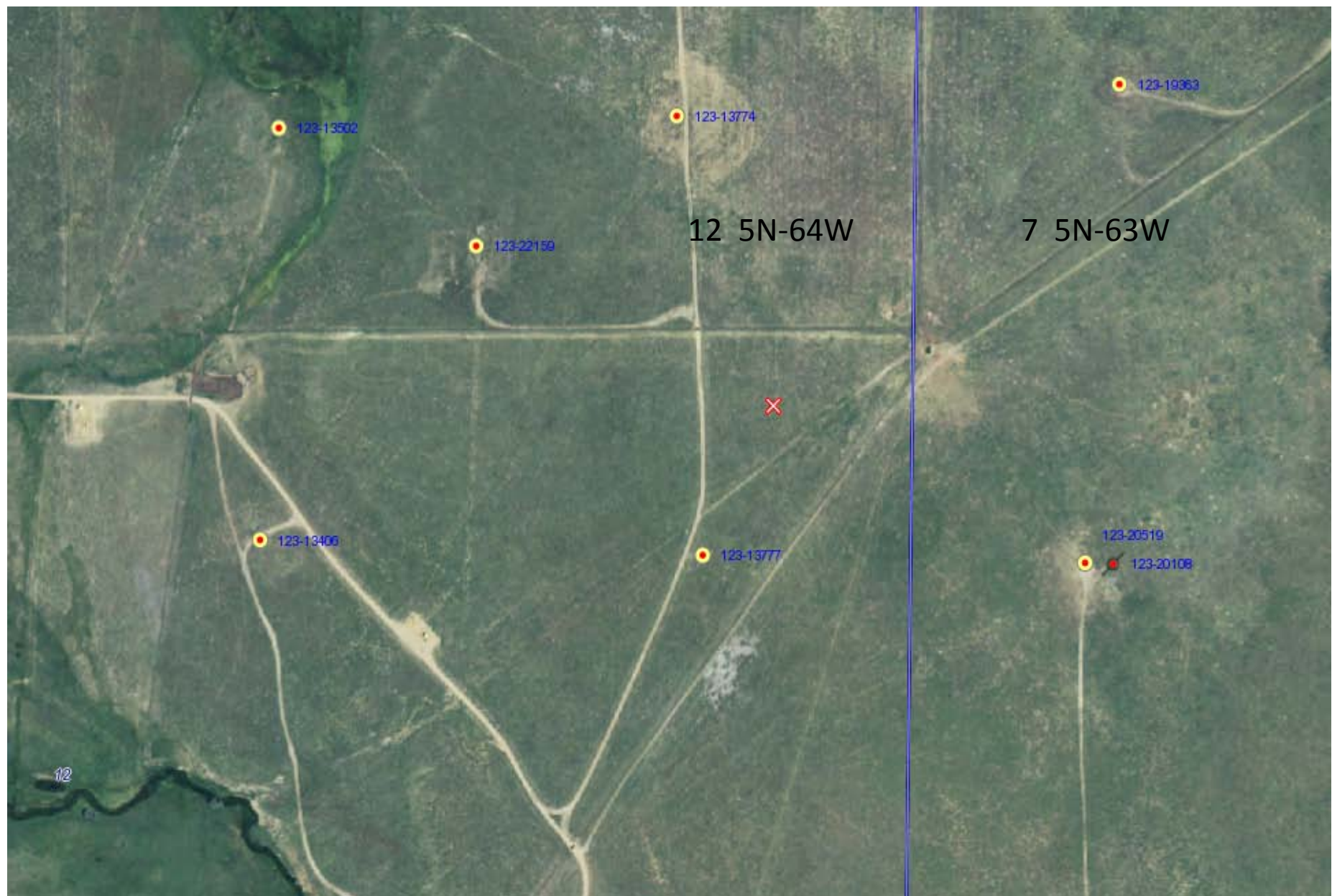
4/20/2006

N

Image © 2012 DigitalGlobe
© 2012 Google

Shane Davis
Weld County
North of Keenesburg, CO
5 miles

0.5 mi



Date: 2011