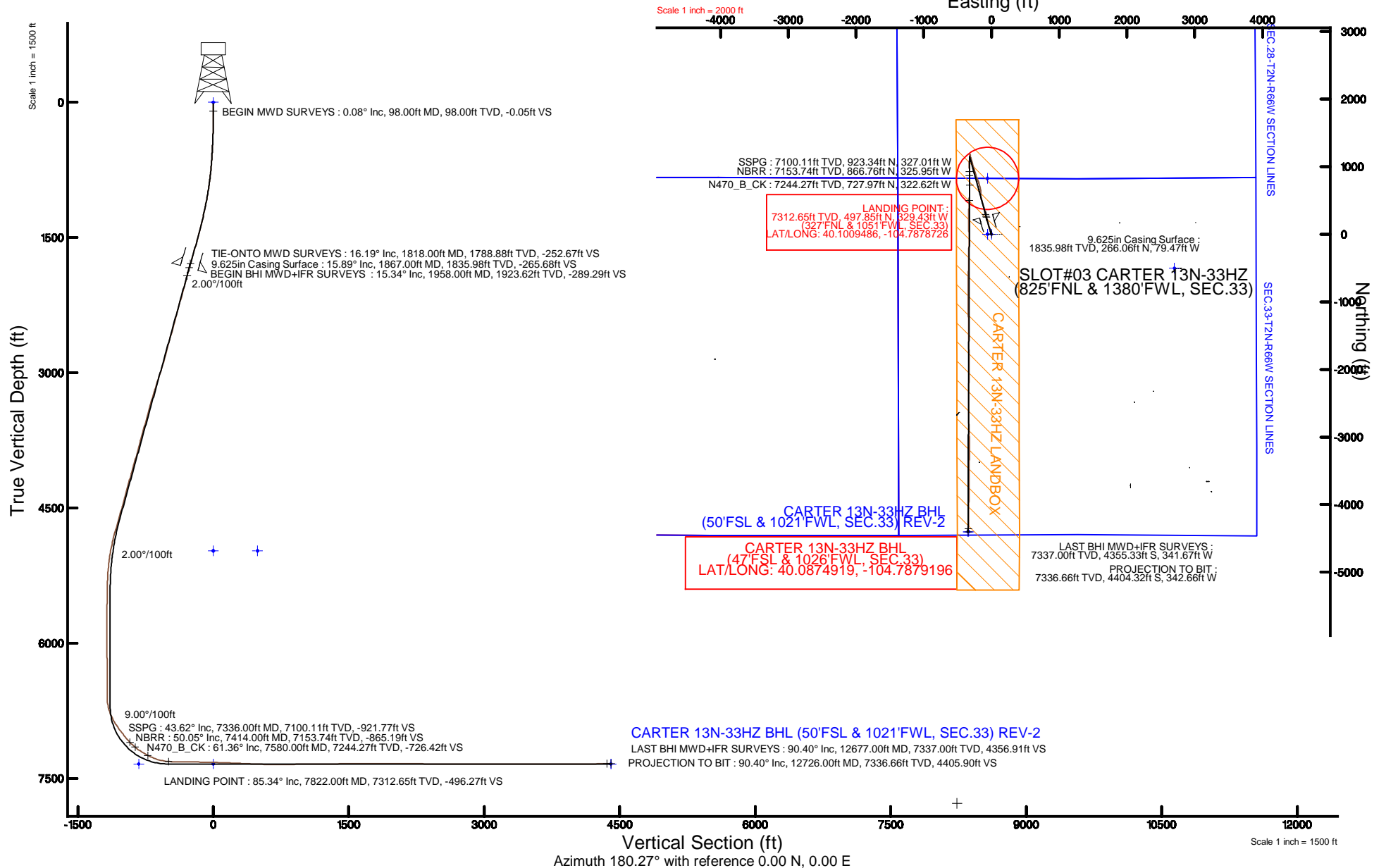


# KERR-MCGEE OIL & GAS ONSHORE LP (WA)

Location: COLORADO Slot: SLOT#03 CARTER 13N-33HZ (825'FNL & 1380'FWL, SEC.33)  
Field: WELD COUNTY (UTM/TRUE NORTH) Well: CARTER 13N-33HZ  
Facility: SEC.33-T2N-R66W Wellbore: CARTER 13N-33HZ PWB

Plot reference wellpath is CARTER 13N-33HZ (REV-C.0) PWP

True vertical depths are referenced to XTREME 23 (16'KB) (RKB)	Grid System: NAD83 / UTM Zone 13 North, US feet
Measured depths are referenced to XTREME 23 (16'KB) (RKB)	North Reference: True north
XTREME 23 (16'KB) (RKB) to Mean Sea Level: 4975 feet	Scale: True distance
Mean Sea Level to Mud line (At Slot: SLOT#03 CARTER 13N-33HZ (825'FNL & 1380'FWL, SEC.33)): 0 feet	Depths are in feet
Coordinates are in feet referenced to Slot	Created by: amarc on 02/Oct/2015





# Actual Wellpath Report

CARTER 13N-33HZ AWP  
Page 1 of 6



## REFERENCE WELLPATH IDENTIFICATION

Operator	KERR-MCGEE OIL & GAS ONSHORE LP (WA)	Slot	SLOT#03 CARTER 13N-33HZ (825'FNL & 1380'FWL, SEC.33)
Area	COLORADO	Well	CARTER 13N-33HZ
Field	WELD COUNTY (UTM/TRUE NORTH)	Wellbore	CARTER 13N-33HZ AWB <12726>
Facility	SEC.33-T2N-R66W		

## REPORT SETUP INFORMATION

Projection System	NAD83 / UTM Zone 13 North, US feet	Software System	WellArchitect® 4.0.0
North Reference	True	User	Amarcar
Scale	0.999604	Report Generated	02/Oct/2015 at 13:16
Convergence at slot	0.14° East	Database/Source file	KERR MCGEE UTM/CARTER_13N-33HZ_AWB__12726_.xml

## WELLPATH LOCATION

	Local coordinates		Grid coordinates		Geographic coordinates	
	North[ft]	East[ft]	Easting[US ft]	Northing[US ft]	Latitude	Longitude
Slot Location	-373.37	715.32	1700066.09	14563067.14	40°05'58.495"N	104°47'12.102"W
Facility Reference Pt			1699350.17	14563438.66	40°06'02.185"N	104°47'21.307"W
Field Reference Pt			1698235.31	14552047.82	40°04'09.600"N	104°47'36.000"W

## WELLPATH DATUM

Calculation method	Minimum curvature	XTREME 23 (16'KB) (RKB) to Facility Vertical Datum	4975.00ft
Horizontal Reference Pt	Slot	XTREME 23 (16'KB) (RKB) to Mean Sea Level	4975.00ft
Vertical Reference Pt	XTREME 23 (16'KB) (RKB)	XTREME 23 (16'KB) (RKB) to Mud Line at Slot (SLOT#03 CARTER 13N-33HZ (825'FNL & 1380'FWL, SEC.33))	4975.00ft
MD Reference Pt	XTREME 23 (16'KB) (RKB)	Section Origin	N 0.00, E 0.00 ft
Field Vertical Reference	Mean Sea Level	Section Azimuth	180.27°

## REFERENCE WELLPATH IDENTIFICATION

Operator	KERR-MCGEE OIL & GAS ONSHORE LP (WA)	Slot	SLOT#03 CARTER 13N-33HZ (825'FNL & 1380'FWL, SEC.33)
Area	COLORADO	Well	CARTER 13N-33HZ
Field	WELD COUNTY (UTM/TRUE NORTH)	Wellbore	CARTER 13N-33HZ AWB <12726>
Facility	SEC.33-T2N-R66W		

## WELLPATH DATA (138 stations) † = interpolated/extrapolated station

MD [ft]	Inclination [°]	Azimuth [°]	TVD [ft]	Vert Sect [ft]	North [ft]	East [ft]	Latitude	Longitude	DLS [°/100ft]	Comments
0.00†	0.000	30.170	0.00	0.00	0.00	0.00	40°05'58.495"N	104°47'12.102"W	0.00	
16.00	0.000	30.170	16.00	0.00	0.00	0.00	40°05'58.495"N	104°47'12.102"W	0.00	
98.00	0.080	30.170	98.00	-0.05	0.05	0.03	40°05'58.496"N	104°47'12.102"W	0.10	BEGIN MWD SURVEYS
188.00	0.330	280.600	188.00	-0.15	0.15	-0.19	40°05'58.497"N	104°47'12.105"W	0.41	
279.00	1.530	311.520	278.99	-1.00	1.01	-1.36	40°05'58.505"N	104°47'12.120"W	1.38	
374.00	2.470	326.120	373.93	-3.53	3.55	-3.45	40°05'58.530"N	104°47'12.146"W	1.12	
469.00	3.080	331.430	468.82	-7.46	7.49	-5.81	40°05'58.569"N	104°47'12.177"W	0.70	
564.00	3.820	338.990	563.64	-12.64	12.68	-8.17	40°05'58.621"N	104°47'12.207"W	0.91	
659.00	4.440	342.500	658.40	-19.09	19.14	-10.41	40°05'58.684"N	104°47'12.236"W	0.70	
754.00	5.490	346.890	753.04	-27.02	27.08	-12.55	40°05'58.763"N	104°47'12.263"W	1.17	
849.00	7.220	347.750	847.45	-37.27	37.34	-14.84	40°05'58.864"N	104°47'12.293"W	1.82	
944.00	9.020	348.340	941.50	-50.38	50.47	-17.62	40°05'58.994"N	104°47'12.329"W	1.90	
1039.00	10.050	343.190	1035.18	-65.59	65.69	-21.52	40°05'59.144"N	104°47'12.379"W	1.41	
1166.00	12.350	339.100	1159.76	-88.85	88.99	-29.57	40°05'59.375"N	104°47'12.483"W	1.91	
1261.00	13.300	341.280	1252.39	-108.66	108.83	-36.70	40°05'59.571"N	104°47'12.574"W	1.12	
1356.00	14.680	343.640	1344.57	-130.52	130.73	-43.60	40°05'59.787"N	104°47'12.663"W	1.57	
1451.00	14.980	346.140	1436.41	-153.97	154.21	-49.93	40°06'00.019"N	104°47'12.745"W	0.74	
1546.00	15.890	344.330	1527.98	-178.38	178.65	-56.38	40°06'00.261"N	104°47'12.828"W	1.08	
1641.00	16.390	345.610	1619.23	-203.85	204.15	-63.23	40°06'00.513"N	104°47'12.916"W	0.65	
1736.00	16.840	346.230	1710.27	-230.16	230.50	-69.83	40°06'00.773"N	104°47'13.001"W	0.51	
1818.00	16.190	344.080	1788.88	-252.67	253.03	-75.80	40°06'00.996"N	104°47'13.077"W	1.09	TIE-ONTO MWD SURVEYS
1958.00	15.340	345.190	1923.62	-289.29	289.70	-85.89	40°06'01.358"N	104°47'13.207"W	0.64	BEGIN BHI MWD+IFR SURVEYS
2053.00	15.700	345.520	2015.15	-313.85	314.30	-92.31	40°06'01.601"N	104°47'13.290"W	0.39	
2148.00	15.220	345.400	2106.72	-338.34	338.81	-98.67	40°06'01.843"N	104°47'13.372"W	0.51	
2244.00	16.750	346.210	2199.00	-363.93	364.44	-105.14	40°06'02.097"N	104°47'13.455"W	1.61	
2339.00	15.830	345.140	2290.19	-389.72	390.26	-111.73	40°06'02.352"N	104°47'13.540"W	1.02	
2434.00	14.540	342.350	2381.87	-413.58	414.15	-118.67	40°06'02.588"N	104°47'13.629"W	1.56	
2529.00	15.720	342.000	2473.57	-437.15	437.75	-126.26	40°06'02.821"N	104°47'13.727"W	1.25	
2624.00	17.470	345.710	2564.62	-463.17	463.81	-133.76	40°06'03.079"N	104°47'13.823"W	2.15	
2719.00	15.910	343.260	2655.61	-489.42	490.10	-141.03	40°06'03.338"N	104°47'13.917"W	1.80	
2815.00	15.800	343.930	2747.96	-514.55	515.26	-148.44	40°06'03.587"N	104°47'14.012"W	0.22	
2910.00	15.430	349.310	2839.46	-539.37	540.11	-154.36	40°06'03.833"N	104°47'14.088"W	1.57	
3005.00	16.350	356.520	2930.84	-565.12	565.88	-157.52	40°06'04.087"N	104°47'14.129"W	2.29	
3100.00	18.760	357.320	3021.41	-593.72	594.49	-159.04	40°06'04.370"N	104°47'14.149"W	2.55	
3195.00	17.240	359.380	3111.75	-623.06	623.83	-159.91	40°06'04.660"N	104°47'14.160"W	1.73	
3291.00	16.990	355.650	3203.51	-651.26	652.04	-161.13	40°06'04.939"N	104°47'14.176"W	1.17	
3387.00	17.280	346.240	3295.26	-679.08	679.88	-165.58	40°06'05.214"N	104°47'14.233"W	2.90	
3482.00	15.210	344.320	3386.47	-704.75	705.59	-172.31	40°06'05.468"N	104°47'14.319"W	2.25	
3577.00	16.060	344.380	3477.95	-729.37	730.24	-179.22	40°06'05.712"N	104°47'14.408"W	0.89	
3672.00	16.430	344.640	3569.16	-754.95	755.85	-186.31	40°06'05.965"N	104°47'14.500"W	0.40	
3767.00	17.660	338.980	3659.99	-781.32	782.26	-195.04	40°06'06.226"N	104°47'14.612"W	2.17	
3862.00	15.580	336.050	3751.02	-806.38	807.37	-205.39	40°06'06.474"N	104°47'14.745"W	2.36	
3958.00	16.090	338.210	3843.37	-830.47	831.51	-215.56	40°06'06.712"N	104°47'14.876"W	0.81	
4053.00	16.360	339.380	3934.59	-855.17	856.25	-225.16	40°06'06.957"N	104°47'15.000"W	0.45	
4148.00	17.220	344.670	4025.54	-881.21	882.34	-233.59	40°06'07.215"N	104°47'15.108"W	1.84	

## REFERENCE WELLPATH IDENTIFICATION

Operator	KERR-MCGEE OIL & GAS ONSHORE LP (WA)	Slot	SLOT#03 CARTER 13N-33HZ (825'FNL & 1380'FWL, SEC.33)
Area	COLORADO	Well	CARTER 13N-33HZ
Field	WELD COUNTY (UTM/TRUE NORTH)	Wellbore	CARTER 13N-33HZ AWB <12726>
Facility	SEC.33-T2N-R66W		

## WELLPATH DATA (138 stations) † = interpolated/extrapolated station

MD [ft]	Inclination [°]	Azimuth [°]	TVD [ft]	Vert Sect [ft]	North [ft]	East [ft]	Latitude	Longitude	DLS [°/100ft]	Comments
4243.00	15.430	342.360	4116.71	-906.78	907.95	-241.14	40°06'07.468"N	104°47'15.205"W	2.00	
4338.00	17.550	344.920	4207.80	-932.63	933.83	-248.70	40°06'07.723"N	104°47'15.302"W	2.36	
4433.00	15.980	342.240	4298.76	-958.87	960.11	-256.41	40°06'07.983"N	104°47'15.402"W	1.84	
4528.00	15.350	341.260	4390.23	-983.20	984.47	-264.44	40°06'08.224"N	104°47'15.505"W	0.72	
4624.00	15.650	342.970	4482.74	-1007.57	1008.89	-272.31	40°06'08.465"N	104°47'15.606"W	0.57	
4719.00	16.120	346.220	4574.11	-1032.60	1033.95	-279.21	40°06'08.713"N	104°47'15.695"W	1.06	
4814.00	16.860	345.890	4665.21	-1058.74	1060.12	-285.71	40°06'08.971"N	104°47'15.779"W	0.79	
4909.00	15.730	343.490	4756.39	-1084.41	1085.83	-292.73	40°06'09.225"N	104°47'15.869"W	1.38	
5005.00	14.810	342.520	4849.00	-1108.56	1110.01	-300.11	40°06'09.464"N	104°47'15.964"W	0.99	
5100.00	12.170	341.520	4941.37	-1129.61	1131.09	-306.93	40°06'09.673"N	104°47'16.052"W	2.79	
5195.00	8.620	343.460	5034.80	-1145.91	1147.41	-312.14	40°06'09.834"N	104°47'16.119"W	3.75	
5290.00	6.390	351.850	5128.98	-1157.96	1159.47	-314.91	40°06'09.953"N	104°47'16.155"W	2.61	
5385.00	4.060	4.630	5223.58	-1166.54	1168.06	-315.39	40°06'10.038"N	104°47'16.161"W	2.73	
5481.00	1.440	11.720	5319.46	-1171.11	1172.63	-314.87	40°06'10.083"N	104°47'16.154"W	2.75	
5576.00	1.320	352.510	5414.44	-1173.37	1174.88	-314.77	40°06'10.106"N	104°47'16.153"W	0.50	
5672.00	1.100	322.760	5510.42	-1175.19	1176.71	-315.47	40°06'10.124"N	104°47'16.162"W	0.68	
5767.00	0.810	295.030	5605.40	-1176.20	1177.72	-316.63	40°06'10.134"N	104°47'16.177"W	0.57	
5862.00	1.030	281.330	5700.39	-1176.64	1178.18	-318.08	40°06'10.138"N	104°47'16.195"W	0.33	
5958.00	0.840	90.510	5796.39	-1176.80	1178.34	-318.22	40°06'10.140"N	104°47'16.197"W	1.94	
6053.00	0.310	307.420	5891.38	-1176.96	1178.49	-317.73	40°06'10.141"N	104°47'16.191"W	1.16	
6148.00	1.120	306.100	5986.38	-1177.65	1179.19	-318.68	40°06'10.148"N	104°47'16.203"W	0.85	
6244.00	1.080	189.630	6082.37	-1177.31	1178.85	-319.59	40°06'10.145"N	104°47'16.215"W	1.95	
6339.00	1.310	133.120	6177.35	-1175.69	1177.23	-318.95	40°06'10.129"N	104°47'16.207"W	1.21	
6434.00	1.490	124.170	6272.32	-1174.26	1175.79	-317.14	40°06'10.115"N	104°47'16.183"W	0.30	
6530.00	1.580	138.970	6368.29	-1172.57	1174.09	-315.23	40°06'10.098"N	104°47'16.159"W	0.42	
6626.00	0.740	4.940	6464.28	-1172.20	1173.71	-314.31	40°06'10.094"N	104°47'16.147"W	2.25	
6721.00	1.460	18.020	6559.26	-1173.96	1175.47	-313.88	40°06'10.111"N	104°47'16.141"W	0.80	
6816.00	5.170	181.280	6654.15	-1170.83	1172.34	-313.61	40°06'10.080"N	104°47'16.138"W	6.93	
6911.00	18.090	191.440	6747.01	-1152.00	1153.53	-316.64	40°06'09.894"N	104°47'16.177"W	13.72	
7006.00	27.940	190.690	6834.34	-1115.55	1117.11	-323.71	40°06'09.535"N	104°47'16.268"W	10.37	
7102.00	33.500	181.980	6916.88	-1066.89	1068.47	-328.80	40°06'09.054"N	104°47'16.333"W	7.41	
7197.00	38.080	178.200	6993.93	-1011.37	1012.95	-328.79	40°06'08.505"N	104°47'16.333"W	5.35	
7292.00	40.500	179.220	7067.45	-951.24	952.81	-327.45	40°06'07.911"N	104°47'16.316"W	2.64	
7336.00†	43.622	179.072	7100.11	-921.77	923.34	-327.01	40°06'07.620"N	104°47'16.310"W	7.10	SSPG
7387.00	47.240	178.920	7135.90	-885.45	887.02	-326.37	40°06'07.261"N	104°47'16.302"W	7.10	
7414.00†	50.048	178.692	7153.74	-865.19	866.76	-325.95	40°06'07.061"N	104°47'16.297"W	10.42	NBRR
7482.00	57.120	178.190	7194.08	-810.54	812.10	-324.45	40°06'06.520"N	104°47'16.277"W	10.42	
7578.00	61.160	179.270	7243.31	-728.18	729.73	-322.64	40°06'05.706"N	104°47'16.254"W	4.32	
7580.00†	61.359	179.320	7244.27	-726.42	727.97	-322.62	40°06'05.689"N	104°47'16.254"W	10.19	N470_B_CK
7673.00	70.630	181.470	7282.07	-641.57	643.12	-323.26	40°06'04.851"N	104°47'16.262"W	10.19	
7768.00	80.290	182.860	7305.89	-549.77	551.34	-326.75	40°06'03.944"N	104°47'16.307"W	10.27	
7822.00†	85.336	182.877	7312.65	-496.27	497.85	-329.43	40°06'03.415"N	104°47'16.341"W	9.34	LANDING POINT
7864.00	89.260	182.890	7314.63	-454.37	455.96	-331.54	40°06'03.001"N	104°47'16.369"W	9.34	
7959.00	88.580	180.790	7316.42	-359.42	361.03	-334.59	40°06'02.063"N	104°47'16.408"W	2.32	
8054.00	90.280	180.830	7317.36	-264.44	266.05	-335.94	40°06'01.124"N	104°47'16.425"W	1.79	

## REFERENCE WELLPATH IDENTIFICATION

Operator	KERR-MCGEE OIL & GAS ONSHORE LP (WA)	Slot	SLOT#03 CARTER 13N-33HZ (825'FNL & 1380'FWL, SEC.33)
Area	COLORADO	Well	CARTER 13N-33HZ
Field	WELD COUNTY (UTM/TRUE NORTH)	Wellbore	CARTER 13N-33HZ AWB <12726>
Facility	SEC.33-T2N-R66W		

## WELLPATH DATA (138 stations)

MD [ft]	Inclination [°]	Azimuth [°]	TVD [ft]	Vert Sect [ft]	North [ft]	East [ft]	Latitude	Longitude	DLS [°/100ft]	Comments
8150.00	88.330	179.290	7318.53	-168.45	170.06	-336.04	40°06'00.176"N	104°47'16.426"W	2.59	
8245.00	88.310	179.280	7321.31	-73.51	75.11	-334.85	40°05'59.237"N	104°47'16.411"W	0.02	
8340.00	88.830	178.810	7323.68	21.44	-19.85	-333.27	40°05'58.299"N	104°47'16.391"W	0.74	
8435.00	87.750	180.570	7326.52	116.39	-114.80	-332.76	40°05'57.361"N	104°47'16.384"W	2.17	
8531.00	87.540	181.650	7330.46	212.30	-210.70	-334.61	40°05'56.413"N	104°47'16.408"W	1.15	
8626.00	87.440	181.340	7334.62	307.18	-305.57	-337.09	40°05'55.475"N	104°47'16.440"W	0.34	
8721.00	87.750	180.690	7338.61	402.09	-400.48	-338.77	40°05'54.538"N	104°47'16.461"W	0.76	
8816.00	87.750	180.840	7342.34	497.01	-495.39	-340.04	40°05'53.600"N	104°47'16.478"W	0.16	
8911.00	87.810	181.150	7346.02	591.94	-590.31	-341.69	40°05'52.662"N	104°47'16.499"W	0.33	
9006.00	90.220	181.200	7347.65	686.90	-685.27	-343.63	40°05'51.723"N	104°47'16.524"W	2.54	
9102.00	91.020	180.740	7346.61	782.89	-781.25	-345.26	40°05'50.775"N	104°47'16.545"W	0.96	
9197.00	91.390	180.580	7344.62	877.87	-876.22	-346.35	40°05'49.836"N	104°47'16.559"W	0.42	
9292.00	90.460	179.040	7343.08	972.85	-971.20	-346.04	40°05'48.898"N	104°47'16.555"W	1.89	
9387.00	90.620	178.920	7342.19	1067.82	-1066.18	-344.35	40°05'47.959"N	104°47'16.533"W	0.21	
9483.00	91.260	178.620	7340.61	1163.77	-1162.15	-342.29	40°05'47.011"N	104°47'16.506"W	0.74	
9578.00	89.510	179.430	7339.97	1258.74	-1257.13	-340.67	40°05'46.072"N	104°47'16.486"W	2.03	
9673.00	90.860	179.870	7339.67	1353.73	-1352.12	-340.09	40°05'45.133"N	104°47'16.478"W	1.49	
9769.00	92.060	179.710	7337.22	1449.70	-1448.09	-339.74	40°05'44.185"N	104°47'16.474"W	1.26	
9864.00	88.830	179.210	7336.48	1544.67	-1543.07	-338.84	40°05'43.246"N	104°47'16.462"W	3.44	
9959.00	89.600	178.120	7337.79	1639.62	-1638.03	-336.63	40°05'42.308"N	104°47'16.434"W	1.40	
10055.00	89.940	177.390	7338.17	1735.53	-1733.96	-332.87	40°05'41.360"N	104°47'16.385"W	0.84	
10150.00	89.480	180.740	7338.65	1830.49	-1828.93	-331.32	40°05'40.421"N	104°47'16.365"W	3.56	
10245.00	90.030	180.080	7339.06	1925.49	-1923.92	-332.00	40°05'39.483"N	104°47'16.374"W	0.90	
10340.00	90.710	179.620	7338.44	2020.48	-2018.92	-331.75	40°05'38.544"N	104°47'16.371"W	0.86	
10435.00	89.720	181.090	7338.09	2115.48	-2113.92	-332.34	40°05'37.605"N	104°47'16.378"W	1.87	
10530.00	90.710	181.650	7337.73	2210.46	-2208.89	-334.61	40°05'36.667"N	104°47'16.408"W	1.20	
10626.00	88.160	180.790	7338.68	2306.43	-2304.85	-336.65	40°05'35.718"N	104°47'16.434"W	2.80	
10816.00	89.690	180.790	7342.24	2496.39	-2494.79	-339.27	40°05'33.841"N	104°47'16.467"W	0.81	
10911.00	89.850	179.450	7342.62	2591.38	-2589.79	-339.47	40°05'32.902"N	104°47'16.470"W	1.42	
11006.00	89.750	178.370	7342.96	2686.36	-2684.77	-337.67	40°05'31.964"N	104°47'16.447"W	1.14	
11102.00	90.220	178.310	7342.98	2782.30	-2780.73	-334.88	40°05'31.016"N	104°47'16.411"W	0.49	
11197.00	91.420	178.000	7341.62	2877.22	-2875.67	-331.83	40°05'30.077"N	104°47'16.372"W	1.30	
11292.00	89.410	177.860	7340.93	2972.14	-2970.60	-328.40	40°05'29.139"N	104°47'16.327"W	2.12	
11387.00	90.620	180.030	7340.91	3067.10	-3065.58	-326.65	40°05'28.201"N	104°47'16.305"W	2.62	
11483.00	89.970	179.990	7340.41	3163.10	-3161.57	-326.66	40°05'27.252"N	104°47'16.305"W	0.68	
11577.00	89.820	179.890	7340.59	3257.10	-3255.57	-326.56	40°05'26.323"N	104°47'16.304"W	0.19	
11672.00	90.280	181.610	7340.50	3352.09	-3350.56	-327.81	40°05'25.384"N	104°47'16.320"W	1.87	
11767.00	90.120	179.930	7340.17	3447.08	-3445.55	-329.08	40°05'24.446"N	104°47'16.336"W	1.78	
11862.00	89.820	180.990	7340.22	3542.08	-3540.55	-329.85	40°05'23.507"N	104°47'16.346"W	1.16	
11957.00	90.180	180.880	7340.22	3637.08	-3635.53	-331.40	40°05'22.568"N	104°47'16.366"W	0.40	
12052.00	90.370	180.910	7339.77	3732.07	-3730.52	-332.88	40°05'21.630"N	104°47'16.385"W	0.20	
12147.00	89.720	179.000	7339.69	3827.06	-3825.51	-332.81	40°05'20.691"N	104°47'16.384"W	2.12	
12243.00	88.610	181.370	7341.09	3923.04	-3921.50	-333.12	40°05'19.742"N	104°47'16.388"W	2.73	
12338.00	89.600	181.410	7342.57	4018.01	-4016.46	-335.42	40°05'18.804"N	104°47'16.418"W	1.04	
12433.00	90.590	181.090	7342.42	4113.00	-4111.43	-337.49	40°05'17.865"N	104°47'16.444"W	1.10	

## REFERENCE WELLPATH IDENTIFICATION

Operator	KERR-MCGEE OIL & GAS ONSHORE LP (WA)	Slot	SLOT#03 CARTER 13N-33HZ (825'FNL & 1380'FWL, SEC.33)
Area	COLORADO	Well	CARTER 13N-33HZ
Field	WELD COUNTY (UTM/TRUE NORTH)	Wellbore	CARTER 13N-33HZ AWP <12726>
Facility	SEC.33-T2N-R66W		

## WELLPATH DATA (138 stations)

MD [ft]	Inclination [°]	Azimuth [°]	TVD [ft]	Vert Sect [ft]	North [ft]	East [ft]	Latitude	Longitude	DLS [°/100ft]	Comments
12528.00	92.070	180.830	7340.21	4207.96	-4206.39	-339.08	40°05'16.927"N	104°47'16.465"W	1.58	
12677.00	90.400	181.160	7337.00	4356.91	-4355.33	-341.67	40°05'15.455"N	104°47'16.498"W	1.14	LAST BHI MWD+IFR SURVEYS
12726.00	90.400	181.160	7336.66	4405.90	-4404.32	-342.66	40°05'14.971"N	104°47'16.511"W	0.00	PROJECTION TO BIT

## HOLE & CASING SECTIONS - Ref Wellbore: CARTER 13N-33HZ AWP <12726> Ref Wellpath: CARTER 13N-33HZ AWP

String/Diameter	Start MD [ft]	End MD [ft]	Interval [ft]	Start TVD [ft]	End TVD [ft]	Start N/S [ft]	Start E/W [ft]	End N/S [ft]	End E/W [ft]
13.5in Open Hole	16.00	1877.00	1861.00	16.00	1845.60	0.00	0.00	268.70	-80.20
9.625in Casing Surface	16.00	1867.00	1851.00	16.00	1835.98	0.00	0.00	266.06	-79.47
7.875in Open Hole	1877.00	12726.00	10849.00	1845.60	7336.66	268.70	-80.20	-4404.32	-342.66

## TARGETS

Name	TVD [ft]	North [ft]	East [ft]	Grid East [US ft]	Grid North [US ft]	Latitude	Longitude	Shape
SEC.32-T2N-R66W SECTION LINES	0.00	0.36	-59.87	1700006.25	14563067.36	40°05'58.499"N	104°47'12.872"W	polygon
SEC.28-T2N-R66W SECTION LINES	4975.00	-503.41	2699.47	1702765.69	14562570.40	40°05'53.519"N	104°46'37.365"W	polygon
SEC.33-T2N-R66W SECTION LINES	4975.00	0.36	-59.87	1700006.25	14563067.36	40°05'58.499"N	104°47'12.872"W	polygon
CARTER 13N-33HZ ARC	7340.00	825.33	-58.96	1700005.18	14563891.99	40°06'06.651"N	104°47'12.861"W	circle
CARTER 13N-33HZ BHL (50'FSL & 1021'FWL, SEC.33) REV-2	7340.00	-4400.98	-347.79	1699728.99	14558667.09	40°05'15.004"N	104°47'16.577"W	point
CARTER 13N-33HZ BHL ON PLAT (50'FSL & 1031'FWL, SEC.33) REV-1	7340.00	-4400.98	-337.79	1699738.99	14558667.11	40°05'15.004"N	104°47'16.448"W	point
CARTER 13N-33HZ LANDBOX	7340.00	-0.02	0.00	1700066.09	14563067.12	40°05'58.495"N	104°47'12.102"W	polygon
SEC.29-T2N-R66W SECTION LINES	7524.00	5793.94	-3741.26	1696312.45	14568849.79	40°06'55.749"N	104°48'00.257"W	polygon

## WELLPATH COMPOSITION - Ref Wellbore: CARTER 13N-33HZ AWP <12726> Ref Wellpath: CARTER 13N-33HZ AWP

Start MD [ft]	End MD [ft]	Positional Uncertainty Model	Log Name/Comment	Wellbore
16.00	1818.00	Custom APC_ISCWSA REV 2 MWD	SCIENTIFIC DRILLING MWD SURVEYS <98-1818>	CARTER 13N-33HZ AWP <12726>
1818.00	12677.00	Custom APC_ISCWSA REV 2 MWD+IFR1+SC (approximation)	BHI MWD+IFR SURVEYS 7.875" <1958-12677>	CARTER 13N-33HZ AWP <12726>
12677.00	12726.00	Blind Drilling (std)	Projection to bit	CARTER 13N-33HZ AWP <12726>



# Actual Wellpath Report

CARTER 13N-33HZ AWP  
Page 6 of 6



## REFERENCE WELLPATH IDENTIFICATION

Operator	KERR-MCGEE OIL & GAS ONSHORE LP (WA)	Slot	SLOT#03 CARTER 13N-33HZ (825'FNL & 1380'FWL, SEC.33)
Area	COLORADO	Well	CARTER 13N-33HZ
Field	WELD COUNTY (UTM/TRUE NORTH)	Wellbore	CARTER 13N-33HZ AWB <12726>
Facility	SEC.33-T2N-R66W		

## WELLPATH COMMENTS

MD [ft]	Inclination [°]	Azimuth [°]	TVD [ft]	Comment
98.00	0.080	30.170	98.00	BEGIN MWD SURVEYS
1818.00	16.190	344.080	1788.88	TIE-ONTO MWD SURVEYS
1958.00	15.340	345.190	1923.62	BEGIN BHI MWD+IFR SURVEYS
7336.00	43.622	179.072	7100.11	SSPG
7414.00	50.048	178.692	7153.74	NBRR
7580.00	61.359	179.320	7244.27	N470_B_CK
7822.00	85.336	182.877	7312.65	LANDING POINT
12677.00	90.400	181.160	7337.00	LAST BHI MWD+IFR SURVEYS
12726.00	90.400	181.160	7336.66	PROJECTION TO BIT