

SCHLUMBERGER WELL SURVEYING CORPORATION

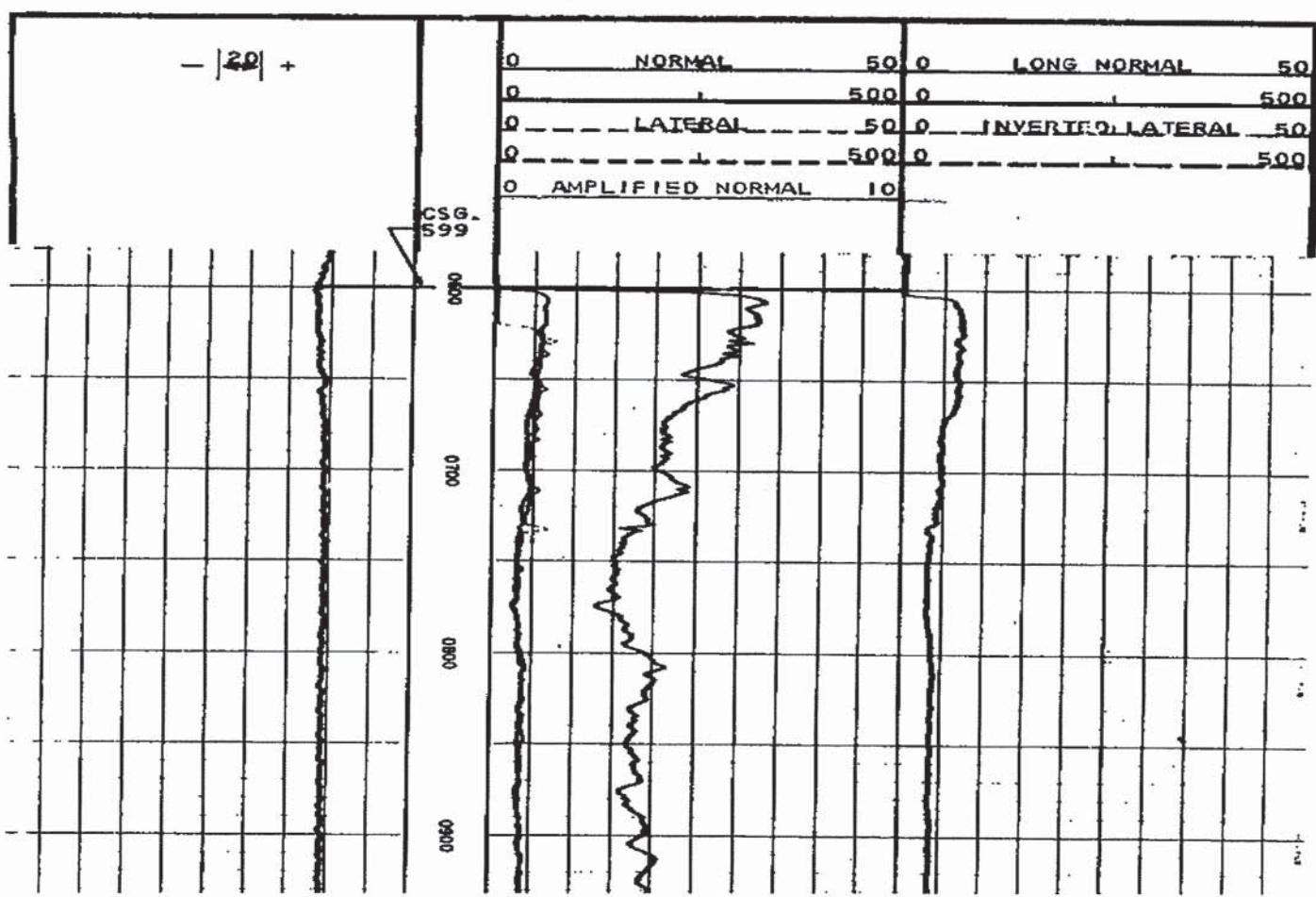
COUNTY: LOGAN FIELD OR DATE: DALE LOCATION: SEC. 15-8N-53W WELL: BREWER # A-2 COMPANY: THE SHELL OIL CO.	COMPANY.....THE SHELL OIL CO.	Location of Well
	WELL.....BREWER # A-2	
	FIELD.....DALE	
	LOCATION.....SEC. 15-8N-53W	SE NE SE
	COUNTY.....LOGAN	
STATE.....COLORADO	Elevation: D. P. 4106	
	FILE No. DMLC-10,008	K.S. 4096

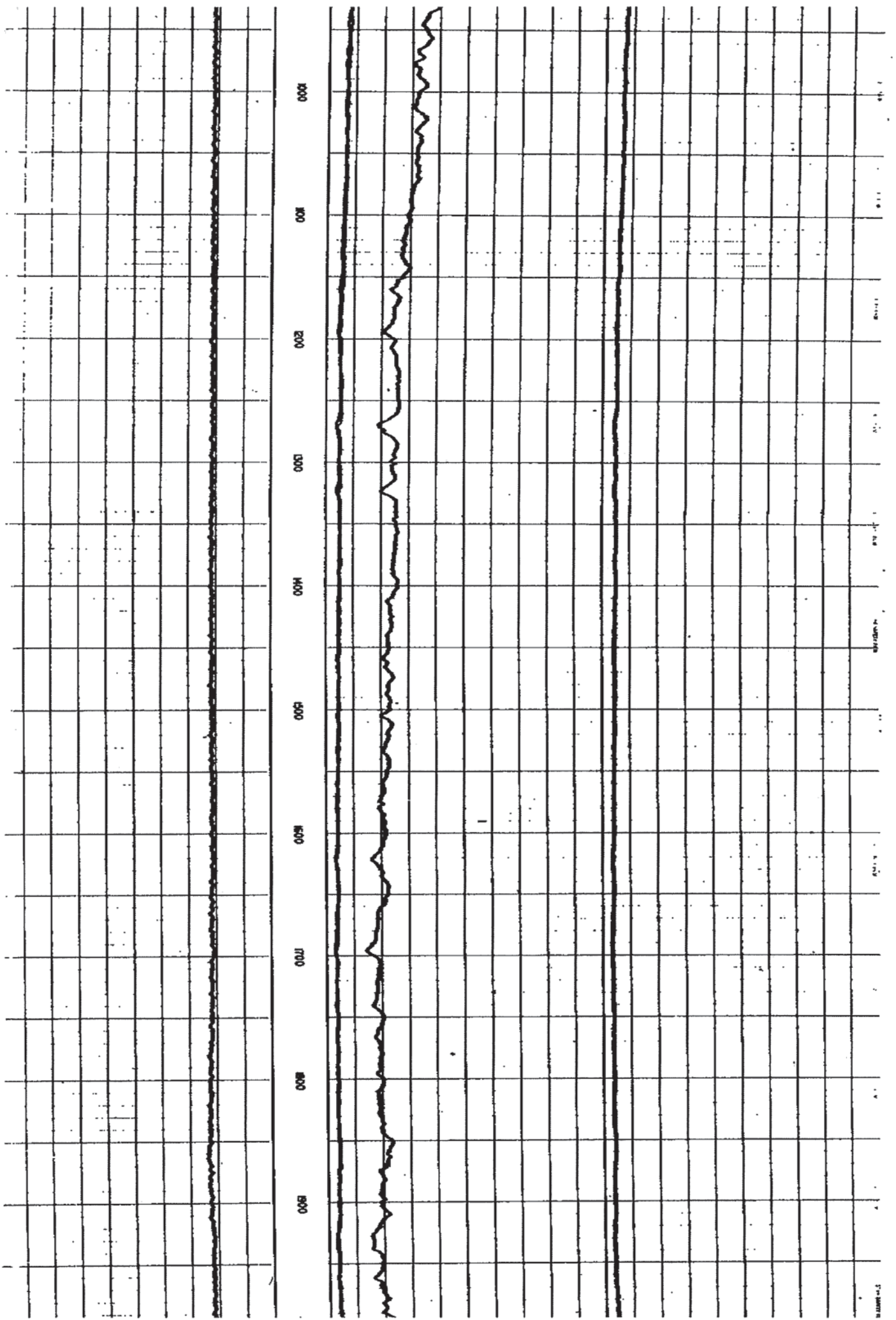
RUN NO.	ONE				
Date	12-2-53				
First Reading	1200				
Last Reading	1200				
Footage Measured	1200				
Cog Shoe Schlumberger	1200				
Cog Shoe Driller	1200				
Max. Depth Reached	1200				
Bottom Driller	1200				
Depth Datum	CHEMICAL				
Mod. Nature					
Density	1.0				
Viscosity	1.0				
Resistivity	1.0				
Resistivity BHT	1.0				
pH	1.0				
Water Loss	1.0				
Maximum Temp. °F	1.0				
Bit Size	1.0				
Spacings	1.0				
A.M.F.	1.0				
AO	1.0				
E.S. Rig Time	1.0				
Track No.	1.0				
Recorded By	1.0				
Witnessed By	1.0				

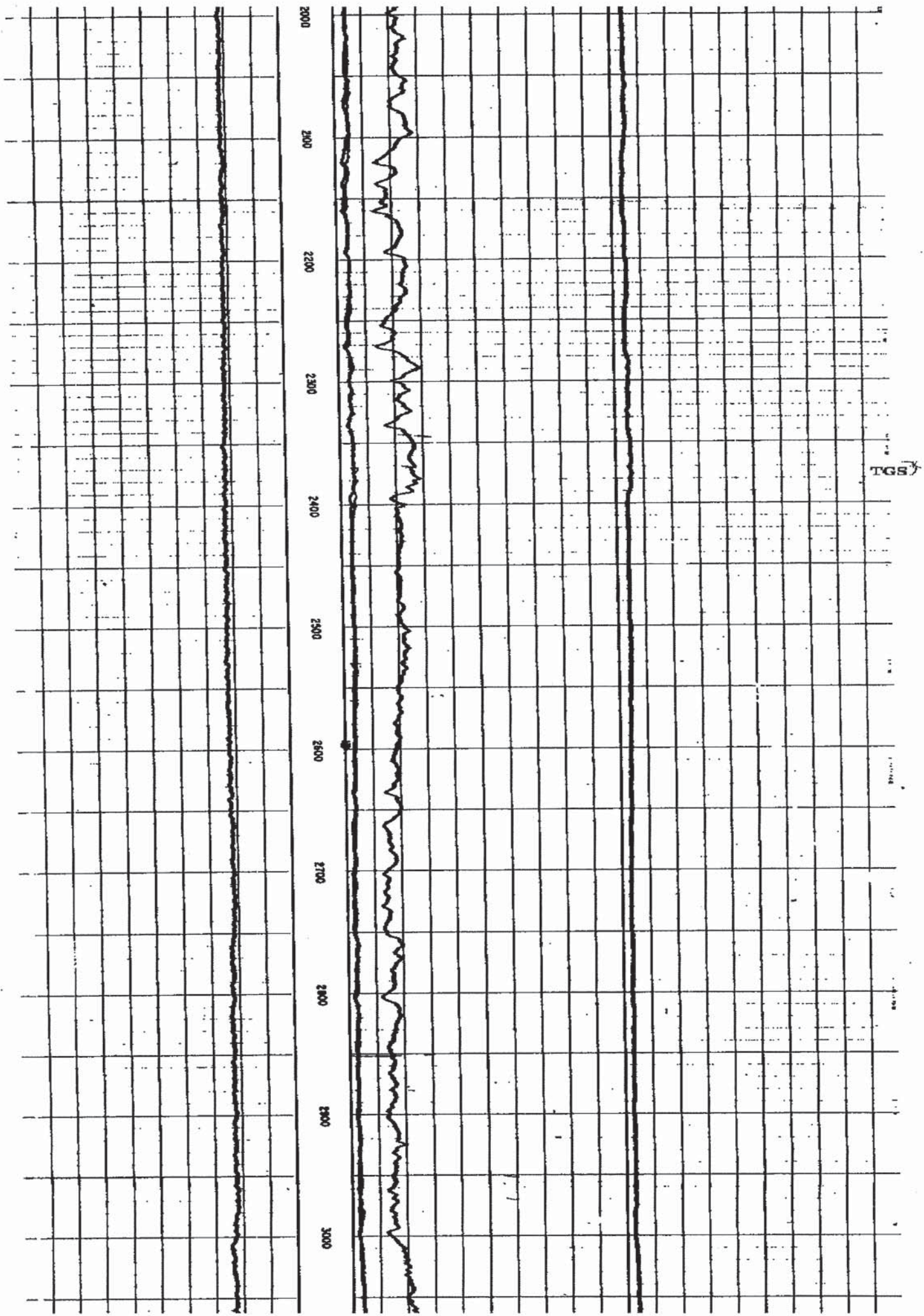
REMARKS	
MUD SAMPLE FURNISHED BY DRILLER.	
SPONTANEOUS-POTENTIAL millivolts	RESISTIVITY ohms. m ² /m.

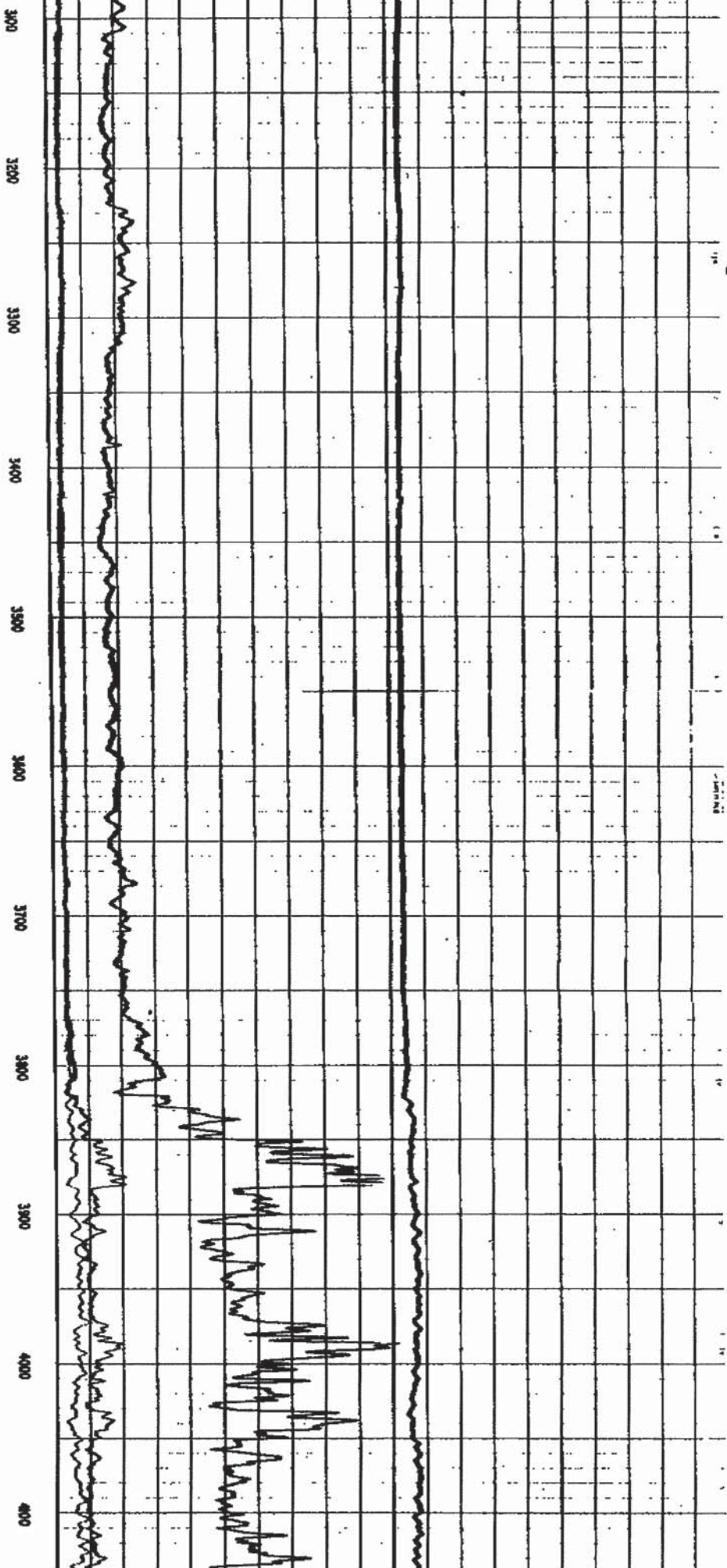
1" = 100'

API# 0507505797

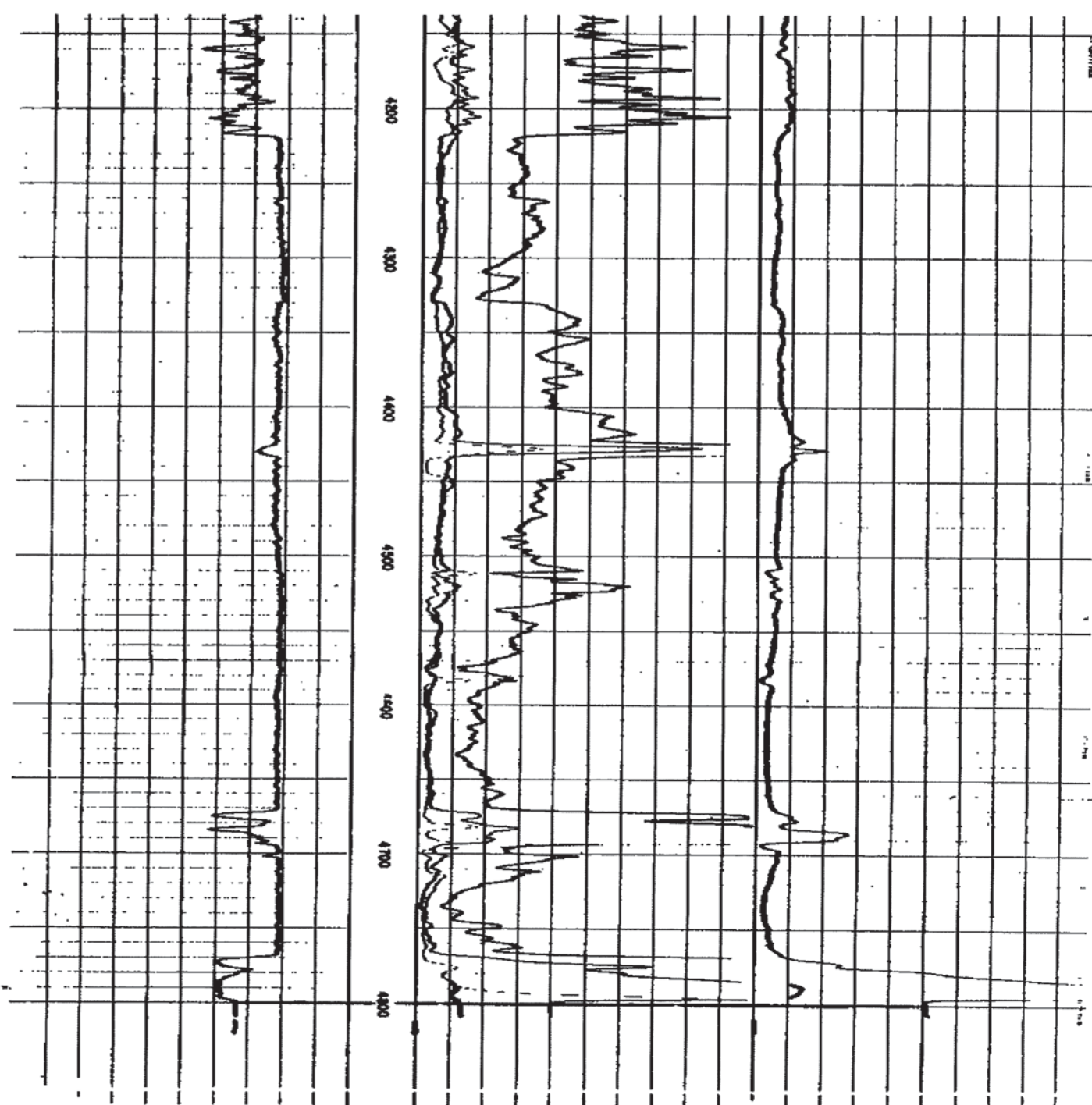








ORIGINAL COPY OFF SCALE



TGS A2D

CORE INFORMATION

SHELL OIL COMPANY-BREWER 'A' NO. 2
DALE FIELD
SE NE SE SECTION 15-8N-53W
LOGAN COUNTY, COLORADO

SAMPLE DESCRIPTIONS:

4675-77	SAND, TIGHT, NO SHOW.
4677-80	SAND, TRACE, PIN-POINT TO FAIR POROSITY, SCATTERED OIL STAIN, FAIR SAMPLE FLUORESCENCE AND ETHER CUT FLUORESCENCE.
4680-82	SAND AND SILTSTONE, TIGHT, SPOTTED OIL STAIN, POOR SAMPLE FLUORESCENCE, GOOD ETHER CUT FLUORESCENCE.
4682-4700	SILTSTONE, TIGHT, NO SHOW.
4770-73	SAND, TIGHT, NO SHOW, TO TRACE POROSITY, NO OIL STAIN, FAINT SAMPLE FLUORESCENCE AND ETHER CUT FLUORESCENCE.
4773-88	SAND, TIGHT, NO SHOW, TO TRACE POROSITY, NO OIL STAIN, FAINT SAMPLE FLUORESCENCE AND ETHER CUT FLUORESCENCE.
4788-98	SAND, TIGHT, TO FAIR POROSITY, SCATTERED OIL STAIN, FAINT TO GOOD SAMPLE FLUORESCENCE, FAIR ETHER CUT FLUORESCENCE.

DST NO. 1 4675-80

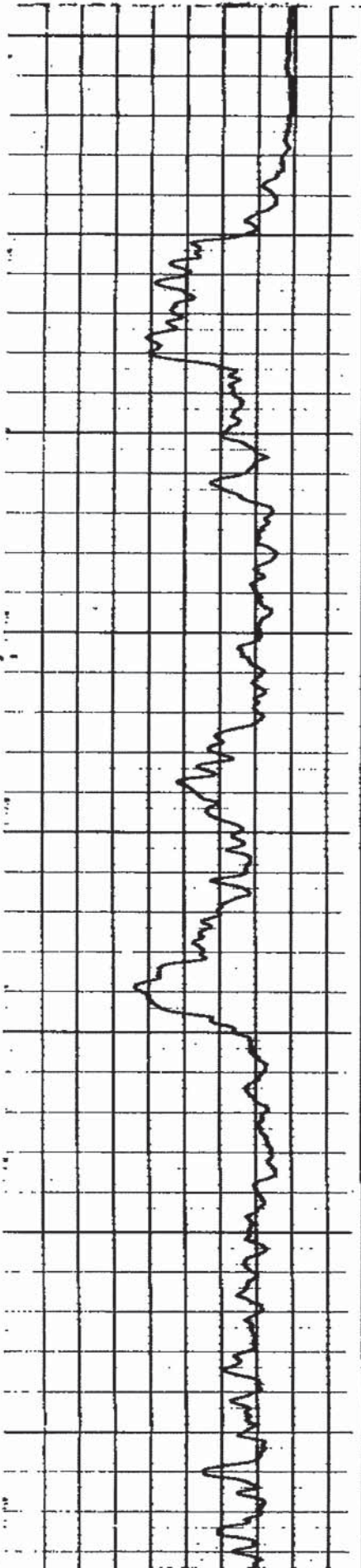
WEAK BLOW DIED IN 12 MINUTES. TOOL OPEN 30 MINUTES.
RESET TOOL, NO BLOW. TOOL OPEN 45 MINUTES. RECOVERED
10" MUD, NO SHOW. PRESSURES FAILED.

DST NO. 2 4675-80

WEAK BLOW DIED IN 6 MINUTES. TOOL OPEN 30 MINUTES.
RECOVERED 3" MUD, NO SHOW. I&F BHP - 0.15 MINUTES
SIBHP - 20%.

DST NO. 3 4791-4800

VERY STRONG BLOW OF AIR IMMEDIATELY GAS IN 9 MINUTES AT
 RATE OF 125 MCF/DAY. OIL TO SURFACE IN 34 MINUTES.
 NO GAUGE UNLOADED FRO 30 MINUTES DURING FINAL SHUT-IN.
 RECOVERED 1365 OIL AND 3 GALLONS MUDDY WATER.
 MINUTE ISIP - 1170 PSI; IFP - 350 PSI; FFP - 740 PSI;
 45-MINUTE FSIP - 1170.

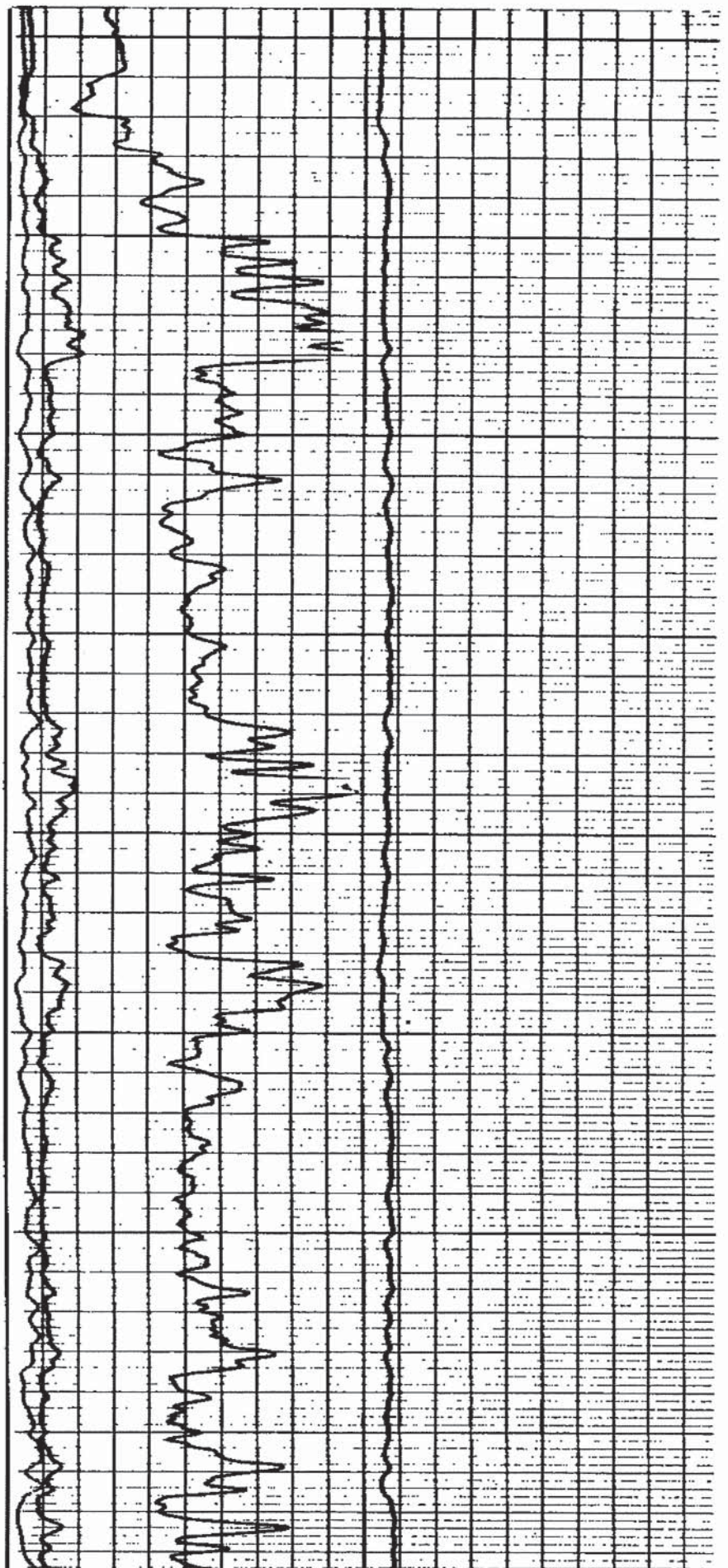


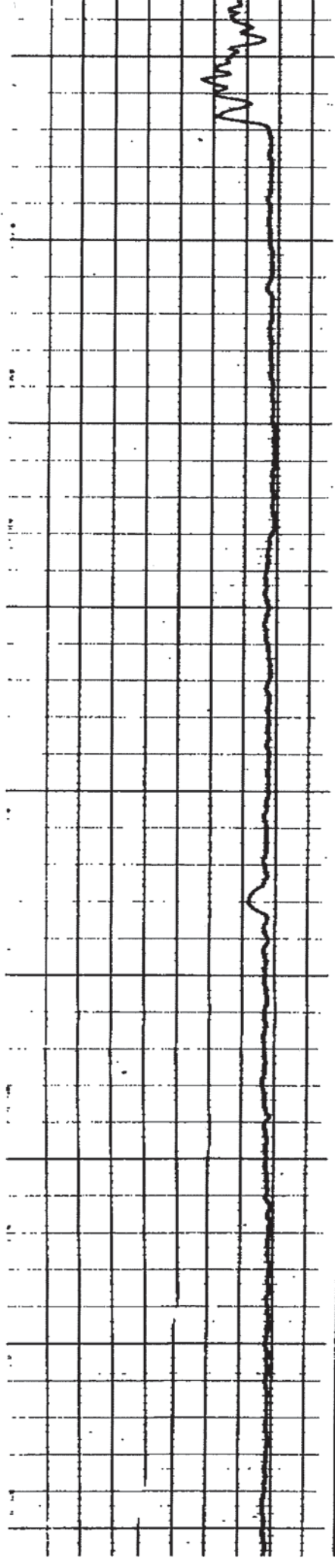
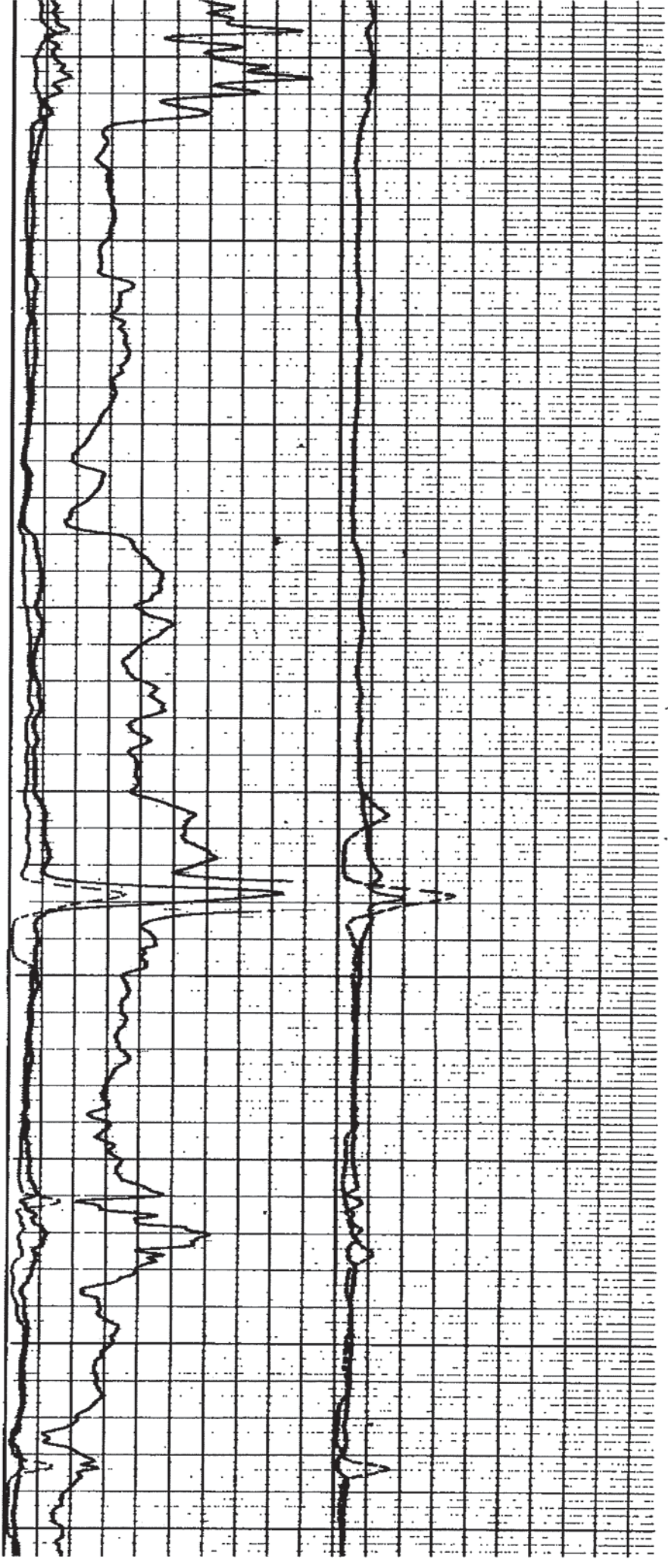
3800

3900

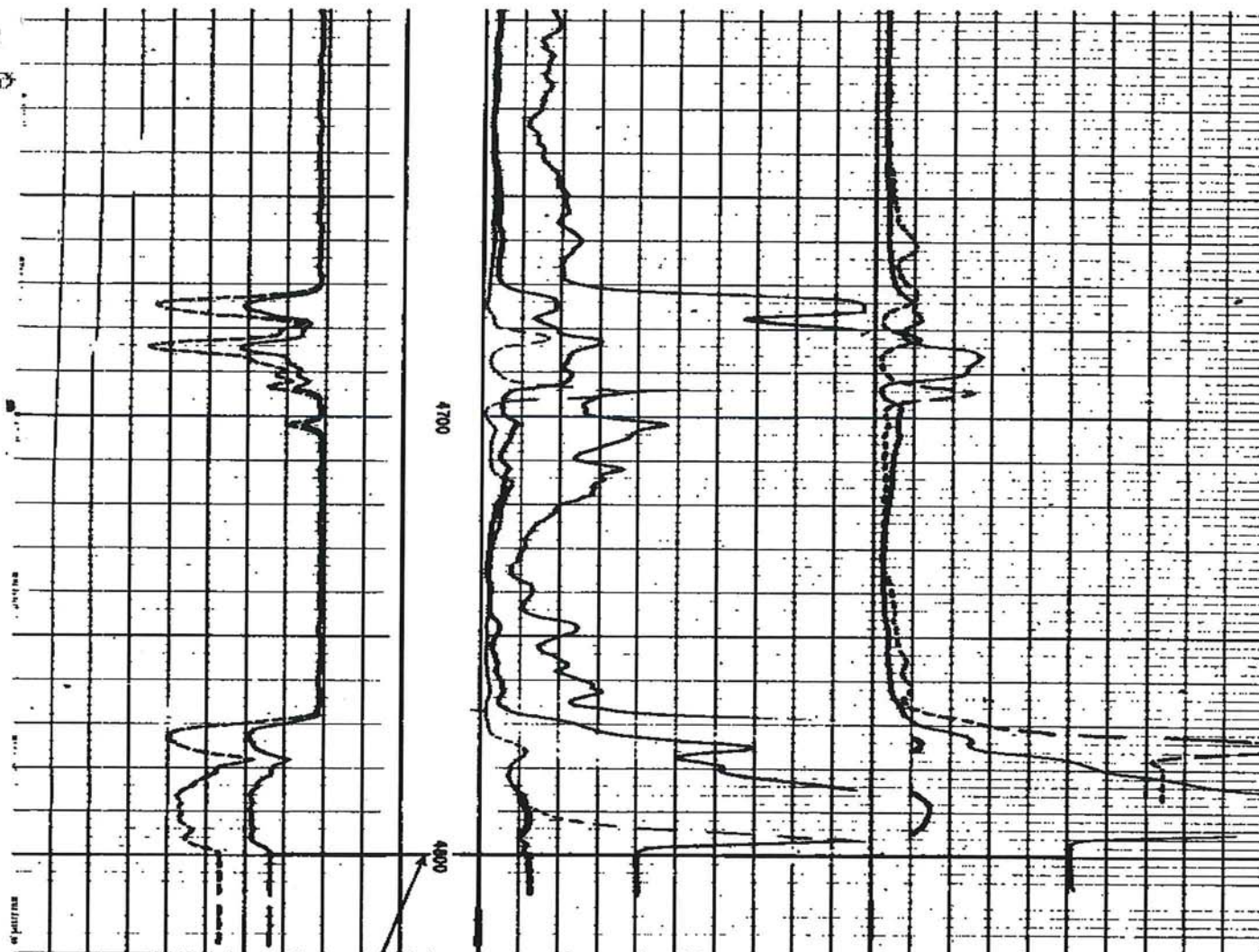
4000

4100





TGB



- 20 +
- 1.0 +

THE SHELL OIL COMPANY
BREWER # A-2
15-8N-53W
LOGAN CO. COLORADO
ELEV. 4106' D.P. 4096' G.L.

4800
1ST RDG.

0	NORMAL	50	0	LONG NORMAL	50
0		500	0		500
0	LATERAL	50	0	INVERTED LATERAL	50
0		500	0		500

Riley's®

Printed with PreView™



Weatherford®

Brewer A 2 electronic log