

Reference Area Photographs

Inspection Conducted on November 03, 2015

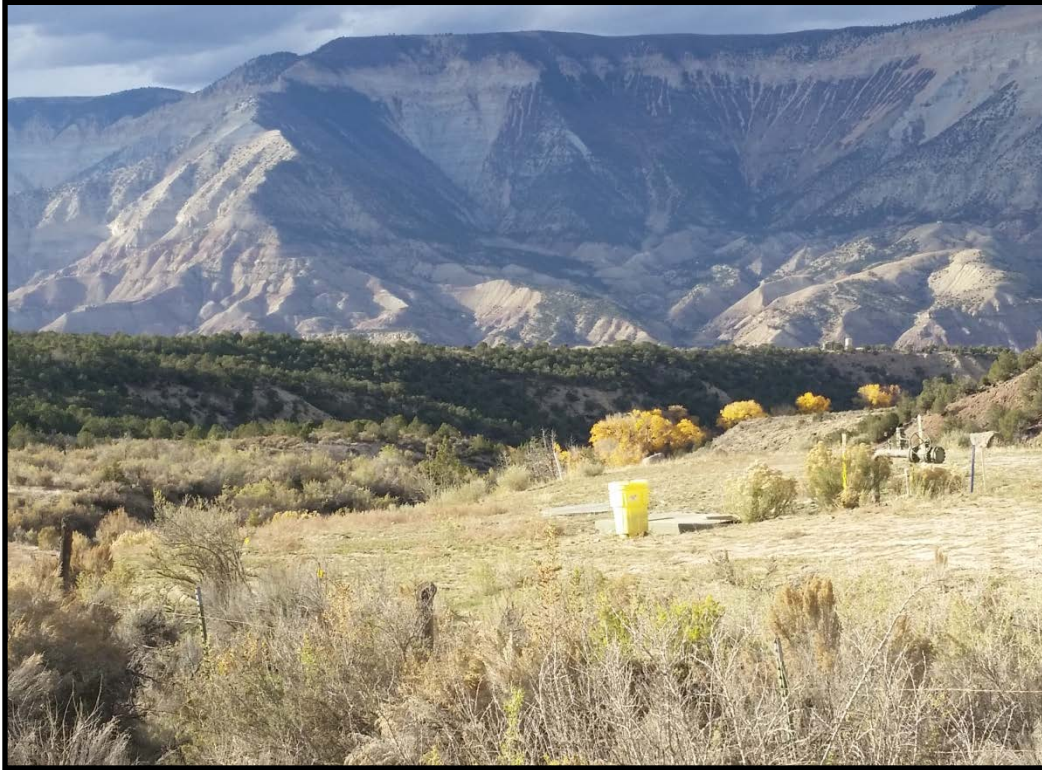
Encana

PK36 Orchard Pipeline

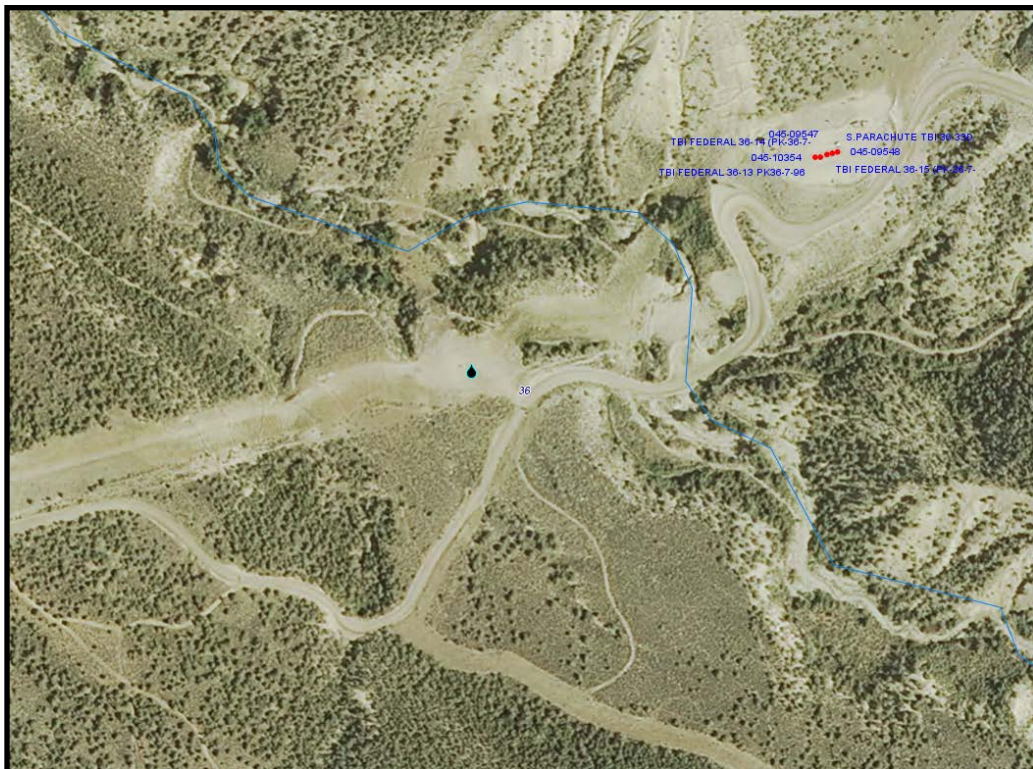
(High Mesa to Wallace Creek 12" water pipeline)

Spill/Release Point #443844

Encana PK36 Orchard Pipeline Release

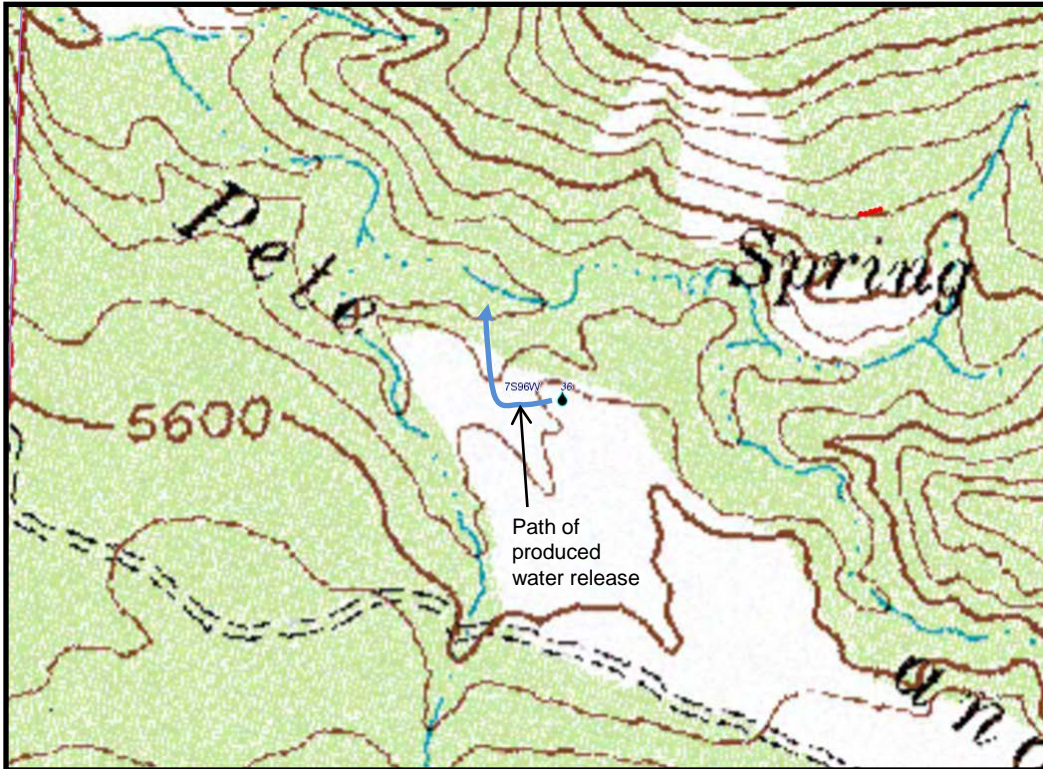


Looking North from the road. Partially buried metallic vault near the center (besides yellow bin). See mild slope to the left and depression that leads to gulch.



COGIS aerial view. Blue line follows Pete and Bill Creek, an affluent of the Colorado River. Black drop toward the center indicates location of vault and of release.

Encana PK36 Orchard Pipeline Release



North is up. Dark blue line shows the approximate path of the release.



North is down. Dark blue line shows the approximate path of the release.

Encana PK36 Orchard Pipeline Release



Partially buried vault. A valve at the bottom of the vault was slightly open. Release water filled the vault and overflowed.

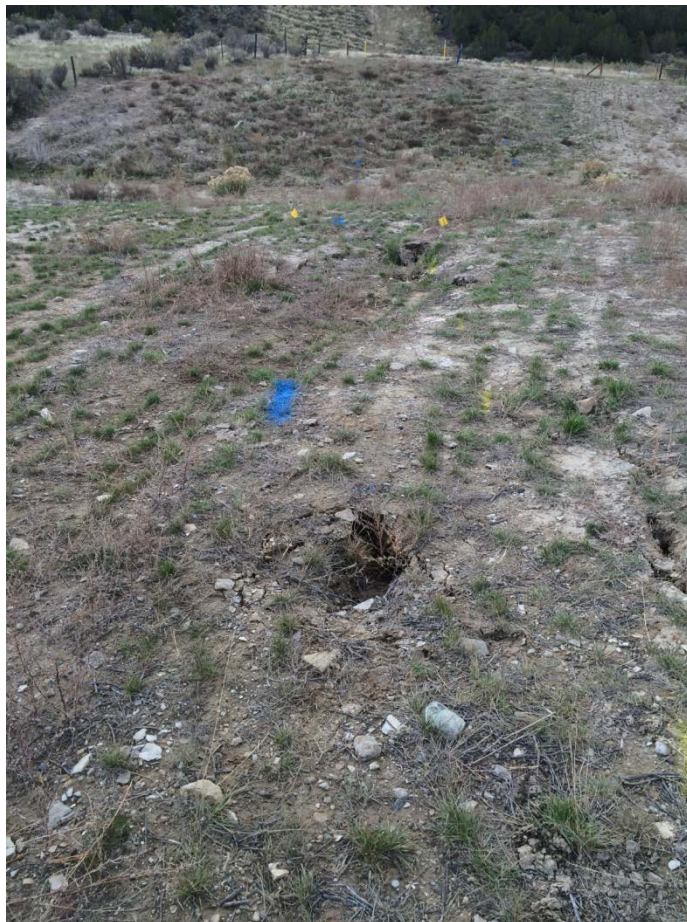


View looking east, from natural depression to the vault.

Encana PK36 Orchard Pipeline Release



Looking west. The release flowed west toward the natural depression and then north (right) and down through the gulch.



Subsuficial flow following the pipeline corridor produced some subsidence.

Encana PK36 Orchard Pipeline Release

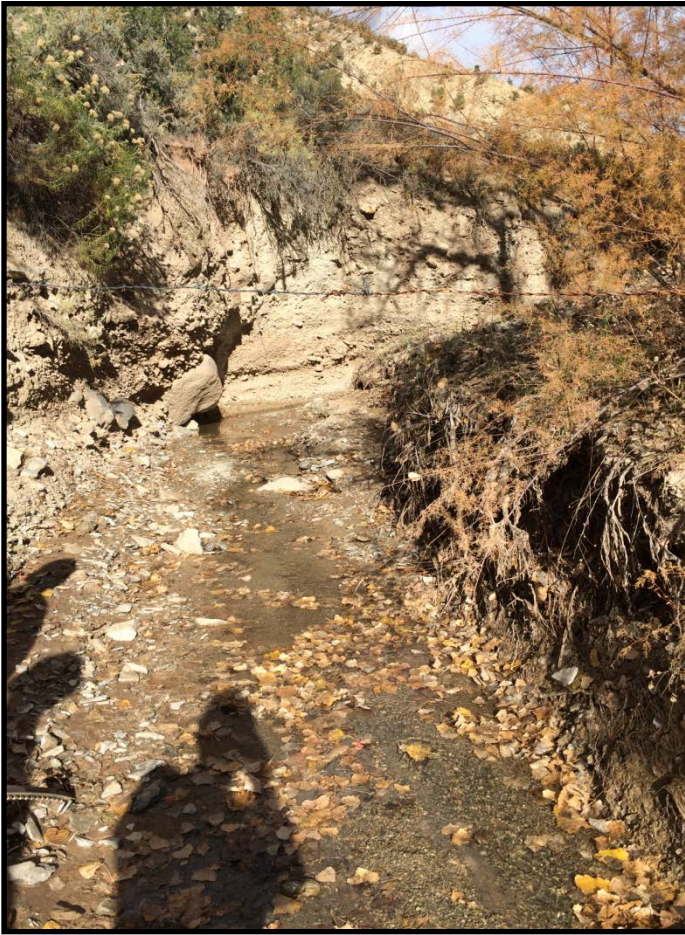


The release flowed down the narrow vegetated gulch.



View of the gulch near the top.

Encana PK36 Orchard Pipeline Release



Pete and Bill creek, upstream view. Well defined river bed. Flowing water.



Looking South and uphill from the creek. According to Encana representative, the release stopped by the cottonwood (tree on the left), about 30 ft before reaching the creek .