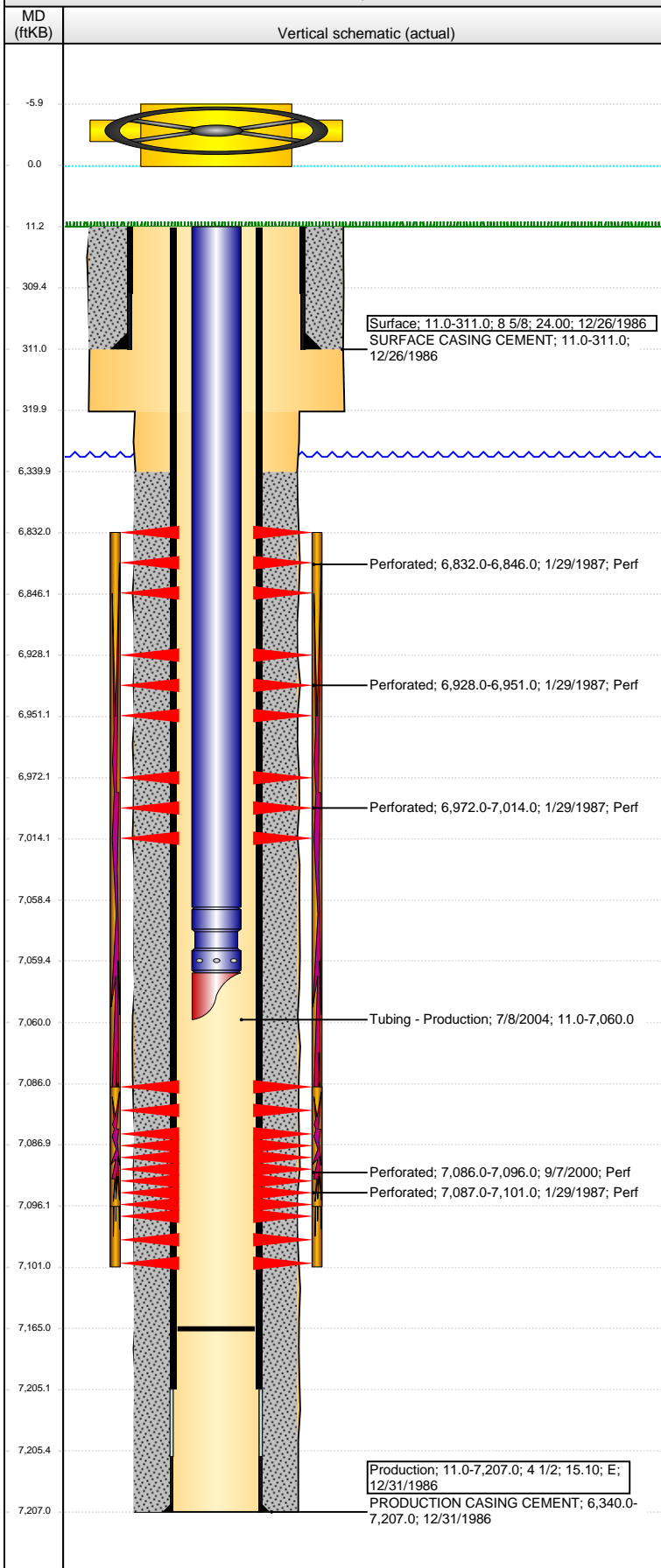


Well Name: FRY 13-02

VERTICAL - ORIGINAL HOLE, 11/5/2015 2:29:33 PM



Well Header

API	Business Unit	District	Well Config
05-123-13303	DJ BASIN	15	VERTICAL
Original KB Elevation (ft)	KB - GL / MSL (ftKB)	Spud Date	P & A Date
4,788.00	11.00	12/26/1986	

Comment
DISCREPANCY- DRL AND ST RPTS TD @ 7187; PROD CSG LANDED @ 7207

NO CSG GRADE FOUND

Directions To Well

Congressional Location

Quarter 1	Quarter 2	Quarter 3	Quarter 4	Section	Township	Twntshp N...	Range	Rng E/W Dir
	NW	SE	NE	13	4	N	65	W

Bottom Hole Location

North-South Distance (ft)	From N or S Line	East-West Distance (ft)	From E or W Line

Plug Back Total Depths

Date	Depth (ftKB)	Method	Com
1/5/1987	7,108.0	CASED HOLE LOG	DEPTH LOGGER ON CBL
7/7/2004	7,165.0	TAG	CLEAN OUT TO LAND TUBING

Wellbore Sections

Section Des	Size (in)	Act Top, MD (ftKB)	Act Btm, MD (ftKB)
SURFACE	12 1/4	11.0	320.0
PRODUCTION	7 7/8	320.0	7,207.0

Zone Statuses

Zone Name	Status Date	Status	Fluid Type	Job	Prod Method
CODELL	2/9/1987	PR		DRILLING/CO...	
CODELL	9/16/2000	PR		RE-FRAC, 9/6/...	
NIOBRARA	2/9/1987	PR		DRILLING/CO...	

Casing Strings

Surface, 311.0ftKB

Casing Description	Run Date	OD (in)	Wt/Len (l...	Grade	Top, MD (ft...	MD (ftKB)
Surface	12/26/1986	8 5/8	24.00		11.0	311.0

Production, 7,207.0ftKB

Casing Description	Run Date	OD (in)	Wt/Len (l...	Grade	Top, MD (ft...	MD (ftKB)
Production	12/31/1986	4 1/2	15.10	E	11.0	7,207.0

Cement

Description	Top Depth (ftKB)	Bottom Depth (ftKB)
SURFACE CASING CEMENT	11.0	311.0

Description	Top Depth (ftKB)	Bottom Depth (ftKB)
PRODUCTION CASING CEMENT	6,340.0	7,207.0

Tubing Strings

Tubing Description	Run Date	String...	ID (in)	Wt (lb/ft)	Grade	Len (ft)	Set De...
Tubing - Production	7/8/2004	2 3/8				7,049.00	

Tubing Components

Item Des	OD (in)	Wt (lb/ft)	Grade	Jts	Len (ft)	Btm (ftKB)	Btm (TVD) (ftKB)
Tubing	2 3/8			229	7,047.50	7,058.5	
Seal Nipple	2 3/8				1.00	7,059.5	
Mule Shoe	2 3/8				0.50	7,060.0	

Perforation Data

Zone	Bnch/St g	Entered Shot Total	Top (ftKB)	Btm (ftKB)	Date
NIOBRARA, ORIGINAL HOLE		3	6,832.00	6,846.00	1/29/1987
NIOBRARA, ORIGINAL HOLE		5	6,928.00	6,951.00	1/29/1987
NIOBRARA, ORIGINAL HOLE		3	6,972.00	7,014.00	1/29/1987
CODELL, ORIGINAL HOLE		40	7,086.00	7,096.00	9/7/2000
CODELL, ORIGINAL HOLE		7	7,087.00	7,101.00	1/29/1987

Stimulations & Treatments

Date	Zone	Primary Job Type
1/30/1987	NIOBRARA-CODELL, ORIGINAL HOLE	DRILLING/COMPLETION - ORIGINAL
Technical Result	Tech Result Details	Tech Result Note

Comment

Well Name: FRY 13-02

VERTICAL - ORIGINAL HOLE, 11/5/2015 2:29:35 PM

Stimulations & Treatments

Date 9/13/2000	Zone CODELL, ORIGINAL HOLE	Primary Job Type RE-FRAC
Technical Result	Tech Result Details	Tech Result Note
Comment		

Other In Hole

Run Date	Des	OD (in)	Top (ftKB)	Btm (ftKB)

Logs

Date	Type	Top, MD (ftKB)	Btm, MD (ftKB)
12/31/1986	COMPENSATED DENSITY	290.0	7,217.0
12/31/1986	INDUCTION	290.0	7,217.0
1/5/1987	CEMENT BOND	6,250.0	7,105.0

